

Associate Professor in Endodontics

School of Dentistry and Health Sciences

Faculty of Science

Classification	Level D
Delegation Band	Delegations and Authorisations Policy (see Section 3)
Nature of Employment	Continuing
Workplace Agreement	Charles Sturt University Enterprise Agreement 2013 - 2016
Date Last Reviewed	May 2018

Our University Values



Our Core Competencies

Charles Sturt University (CSU) staff are expected to demonstrate the following competencies:

Set Direction and Deliver Results

- Creating and innovating.
- Delivering results and meeting customer expectations.
- Entrepreneurial and commercial thinking.

Collaborate with Impact

- Relating and networking.
- Working with people.
- Persuading and influencing.

Lead Self and Others

- Adhering to principles and values.
- Deciding and initiating action.
- Adapting and responding to change.

Faculty of Science – Organisational Environment

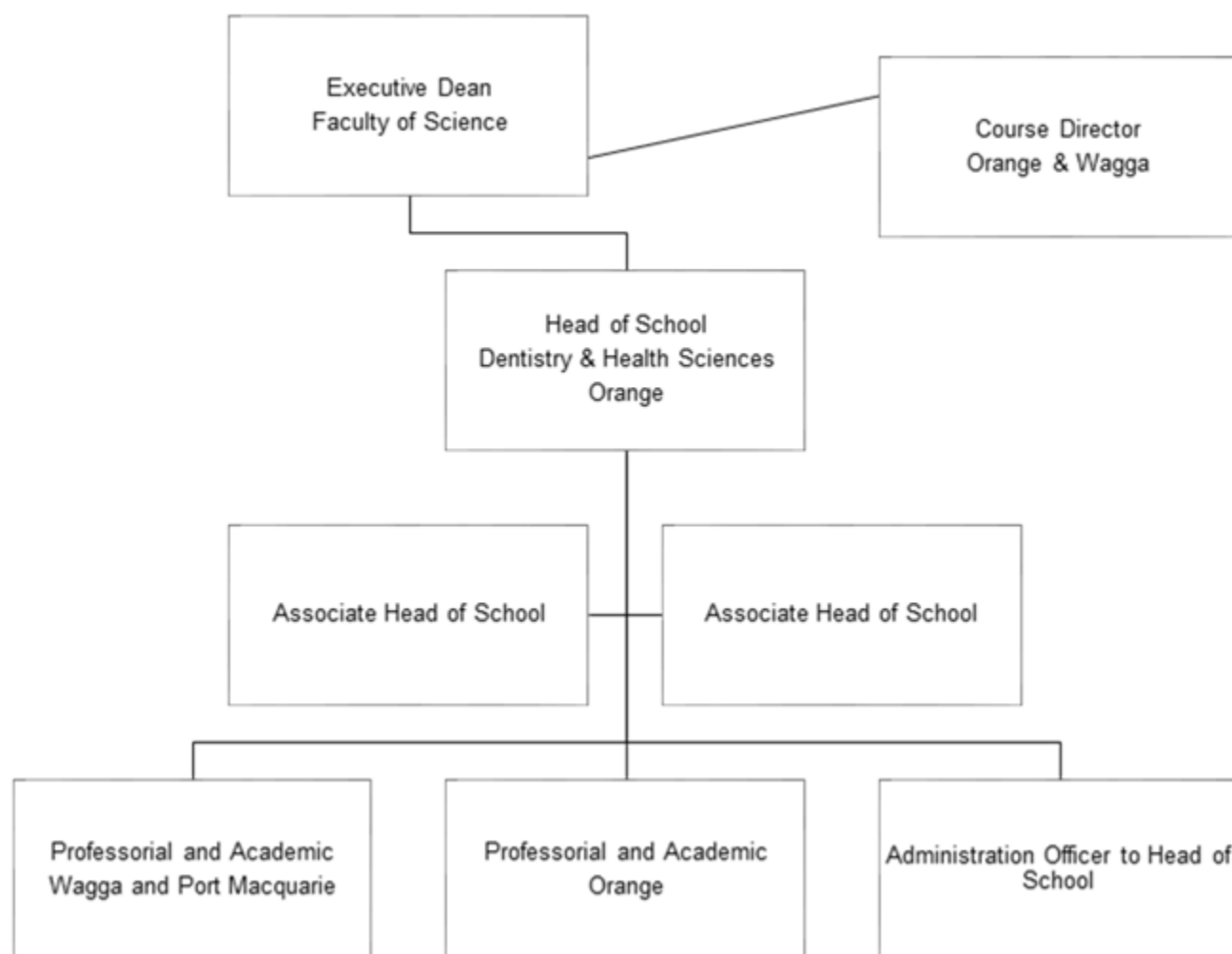
The [Faculty of Science](#) has more than 9000 students and over 500 staff dedicated to advancing scientific knowledge. It delivers flexible and innovative teaching programs designed to produce job-ready graduates for a diverse range of professions. As a leader in strategic and applied research the Faculty aims to enhance and extend scientific knowledge, train and educate future researchers as well as provide scientific solutions to current regional, national and global challenges. The staff and students of the Faculty achieve their educational and research goals through ethical practice, professional collaboration, industry involvement and a commitment to continual improvement.

The [School of Dentistry and Health Sciences](#) is a multi-campus, academic unit. The School offers a suite of undergraduate and postgraduate courses both onshore and offshore in a range of health disciplines including: Dentistry, Oral Health Therapy, Medical Radiation Science and Physics. The School is committed to enhancing its reputation as a high performing multidisciplinary school and seeks academics focused on providing quality education and being actively involved in a variety of development of health professional education and health based research programs that complement these courses.

Staff are focused on innovative and high quality education, using vibrant new learning spaces to encourage collaboration and support new methods of teaching and learning.

Through patient care, research and community service, our students and staff will also play a major role in helping to improve the oral and systemic health of people in regional/remote New South Wales, and across the nation and the world.

Organisational Chart



Reporting Relationships

This position reports to: Head of School, School of Dentistry and Health Sciences
This position supervises: N/A

Key Working Relationships

Head of School
Course Director
Faculty and School Staff

Position Overview

The Associate Professor in Endodontics will actively engage in teaching, research and curriculum development in the School of Dentistry and Health Sciences. The appointee will have extensive clinical experience within the field of endodontics and can demonstrate education experience within the clinical and academic setting. The appointee will be responsible for teaching a range of subjects in the Bachelor of Dental Science and Bachelor of Oral Health courses. It will be expected that multiple teaching methods (face to face and online delivery) methods are utilised. The appointee will participate in the administration and ongoing curriculum development and progress an active research profile that aligns with the direction of both the University and School. The successful candidate will be appointed as either Teaching Research or Teaching Focused, based on the candidate's research track record. Applicants are able to discuss their preferred work function with the Selection Panel.

The incumbent must maintain clinical practice and professional registration with the Australian Health Practitioner Regulation Agency (AHPRA). The incumbent would be required to provide clinical services in the CSU Oral Health and Dental Clinics.

Principal Responsibilities

1. Make an outstanding contribution to the development, implementation and promotion of CSU learning and teaching methodologies, processes, technologies and tools to deliver high quality student centred learning opportunities in the relevant discipline and as required to meet the teaching needs of the University. Achieve excellence in teaching in a range of delivery modes, which may include face to face and online teaching and assessment;
2. Supervise Research Higher Degree students;
3. Build strong professional relationships with students and provide timely and appropriate consultation and feedback;
4. Provide leadership in collaborative processes to design, deliver and continually improve high quality courses and learning experiences for students including the giving and receiving of constructive feedback;
5. Actively contribute to high performing multi-disciplinary teams with an outcome focus and the development of a respectful, trusting and collaborative working environment;
6. Lead and manage the convening, coordination and delivery of subjects and/or courses.
7. Conduct ethical, high quality research and contribute to knowledge through scholarship, publication and presentation and execute a research plan that aligns with CSU's Research Plan and objectives including pursuing funding opportunities;

8. Participate and demonstrate leadership in the governance, marketing and promotion, and administrative activities to facilitate the work of the Faculty/School.
9. Make an outstanding contribution to the development and improvement of policy and practice through involvement in professional/industry associations, accreditation authorities, conference organisations, advisory bodies, and national or international delegations, consistent with the University's Outside Professional Activities Policy;
10. Proactively develop and foster relationships with a range of stakeholders including community, government departments, and professional bodies;
11. Engage in professional practice in a discipline or field for the purposes of improving/transforming professional practice and feeding back into teaching and/or practice across the professions OR which demonstrates the maintenance or development of significant advanced practice skills or improves/transforms practices within the profession and which informs teaching. These activities could be achieved through scholarship, publication or presentation;
12. Other duties appropriate to the classification as required

Physical Capabilities

1. Physically able to sit for extended periods of time to perform reading, writing and computing related activities including keyboard and mouse operations;
2. On occasion travel in/drive a university vehicle distances up to 500kms per day within the terms of the University's Driving Hours Guidelines and Policy available at:
<https://policy.csu.edu.au/view.current.php?id=00176> and
<https://policy.csu.edu.au/view.current.php?id=00184>.

Selection Criteria

Applicants are expected to address **all** selection criteria when applying for this position. Please demonstrate **evidence** of qualifications and relevant experience as per the selection criteria.

Essential Criteria

1. Demonstrated evidence of eligibility for **full registration** as a **specialist endodontist** or a **dentist** with Australian Health Practitioner Regulation Agency (AHPRA), which may refer to a primary dental qualification obtained from Australia, Britain, Canada or New Zealand or an Australian Dental Council (ADC) certificate; dentists with limited registration and/or undertaking ADC exams for overseas trained dentists are **NOT** eligible for this level;
2. Completion of a DClinDent (or equivalent qualification) or a PhD degree relevant to endodontics;
3. Demonstrated evidence of a minimum of ten years' clinical experience after completion of a Bachelor of Dental Science or Doctor of Dental Surgery degree; applicant must also demonstrate evidence of a minimum of five years' clinical experience in endodontics after completion of a DClinDent (or equivalent qualification) or a PhD degree;
4. Demonstrated evidence of a minimum of five years' experience in teaching endodontics, as a lecturer, tutor, demonstrator and/or supervisor, in a tertiary education institution; and
5. Demonstrated evidence of leadership in an academic and/or clinical setting.

Desirable Criteria

1. A current Class C Driver's Licence;
2. A track record of research works relevant to dentistry, biomedical science or public health.

Information for Prospective Staff

Your Application

E-recruitment is the method by which CSU manages its recruitment processes and it is preferred that all applications be lodged using this method. Please refer to www.csu.edu.au/jobs/.

If intending applicants are unable to access this website, please contact the HR Service Centre on 02 6338 4884.

Staff Benefits

CSU is committed to providing an employment environment that fosters teamwork, innovation, reflective practice, continual learning, knowledge sharing and opportunities for staff to achieve their full potential. CSU is committed to providing a flexible working environment that encourages employees to live a balanced lifestyle, combining work and family responsibilities.

To find out more: <http://www.csu.edu.au/jobs/working-with-us/benefits-and-rewards>.

Essential Information for Staff

- All employees have an obligation to comply with all the University's workplace health & safety policies, procedures and instructions and not place at risk the health and safety of any other person in the workplace;
- All employees are required to be aware of and demonstrate a commitment to the principles of equal opportunity in the workplace;
- All employees are to ensure the creation and maintenance of full and accurate records of official University business adheres to the University's Records Management Policies; and
- All employees are expected to undertake an induction program on commencement.

Further information regarding the policy and procedures applicable to Occupational Health and Safety and Equal Opportunity can be found on the CSU website <http://www.csu.edu.au/division/hr/>.

Further information regarding the policies and procedures of CSU can be found in the CSU Policy Library at: <https://www.csu.edu.au/about/policy>.

The following links are listed from [CSU Policy Library](#) on relevant specific policies:

- [Code of Conduct](#)
- [Staff Generic Responsibilities Policy](#)
- [Delegations and Authorisations Policy](#)
- [Outside Professional Activities Policy](#)
- [Intellectual Property Policy](#)