

ANU wants you

INFORMATION FOR
PROSPECTIVE CANDIDATES

Lecturer / Senior Lecturer
School of Culture, History and
Language

ANU COLLEGE OF
ASIA AND THE PACIFIC



**Australian
National
University**

Message from the Director, School of Culture, History and Language

The Australian National University (ANU) is unique in Australia. Ranked in the world top 20 by QS, and based in our capital city, ANU is charting a new strategic course to redefine the role of a contemporary national university.

Firstly, thank you for your interest in joining the School of Culture, History and Language. The School's combination of in-depth engagement with the languages, modern and deep histories, cultures, societies and politics of Asia and the Pacific is unique in the world. The intersection of area and disciplinary modes of organisation creates productive patterns of cross-fertilisation, enabling innovative inter-disciplinary, cross-disciplinary and trans-disciplinary research that addresses dynamic changes in both the region and the academy.

Our globally unique blend of languages, disciplines, area and thematic expertise has enabled us to be outstandingly successful in winning large grants and awards at every level, permitting us to be innovative and flexible in supporting an environment of intellectual independence and unfettered inquiry into major questions and socio-cultural issues of the day.

The School of Culture, History and Language is one of the five constituent schools and centres that make up the ANU College of Asia and the Pacific (CAP), and is the largest in the College. With approximately 80 academic and professional staff, a large cohort of distinguished emeriti professors and researchers, over 120 higher degree researchers (HDR) and postgraduate students, scores of academic visitors and affiliates, and three-quarters of CAP's undergraduate student load, the School is the principal arena for humanistic enquiry including the study of languages within the College. As such, we think of ourselves as the pillar for the College of Asia and the Pacific, anchoring it in the study of the cultures, histories, environments and languages of the Asia and Pacific regions.



The School of Culture, History and Language is the focus of research and teaching in Asian and Pacific humanities, social sciences and languages. It seeks to build excellence in understanding and capability in engaging with the Asia and Pacific region. The key disciplines that are represented in The School of Culture, History and Language are anthropology, archaeology, cultural studies, gender studies, history, linguistics, and languages, all contributing to our profound knowledge of Asia and the Pacific.

The School of Culture, History and Language is also recognised for the strength and effectiveness of its research and teaching in Area Studies and Asian and Pacific languages in Australia. The contemporary languages currently taught include Mandarin, Japanese, Indonesian, Korean, Hindi, Tok Pisin, Cantonese, Mongolian, Tetum, Thai, Vietnamese, Tibetan, and Burmese. In addition, The School of Culture, History and Language teaches key classical languages of the region including courses in Literary Chinese and Sanskrit.

Professor Simon Haberle

Director, School of Culture, History and Language,
ANU College of Asia and the Pacific
The Australian National University

INFORMATION FOR PROSPECTIVE CANDIDATES

The University

Australia's #1 university

The Australian National University is one of the world's foremost research universities. Distinguished by its relentless pursuit of excellence, the University attracts leading academics and outstanding students from Australia and around the world.

History

The University was established by the Commonwealth Parliament in 1946 specifically to lead the development of the intellectual capacity of the nation through research and research training in line with the best international standards. It is the only Australian university established by a Commonwealth Act of Parliament. In 1960, the University accepted responsibility for undergraduate education along with an expectation that the highest standards of education would be achieved.

Scale

The University has 4,094 staff, 12,827 undergraduates and 12,534 postgraduate students. Its annual revenue exceeds \$1.0 billion and consolidated assets are worth \$2.5 billion.

Partnerships

The University has strong links with leading research institutions in Australia and overseas. It is a founding member of the International Alliance of Research Universities, a co-operative network of 10 eminent international research-intensive universities which includes:

- > University of Cambridge
- > University of Oxford
- > University of California, Berkeley
- > Yale University
- > Peking University
- > National University of Singapore
- > University of Tokyo
- > University of Copenhagen
- > ETH Zurich

Research-intensive education

As the specially-chartered national university, the University conducts research at the highest levels in all of its colleges, and offers a unique research-led education to undergraduate and postgraduate students as well as postdoctoral fellows.

The University advances the national intellectual and creative capacity in three key ways:

1. Through broad-based research and research-intensive education in the disciplines fundamental to all knowledge: the humanities, the sciences and the social sciences,
2. By supporting research and research-intensive education in a spectrum of professional disciplines, and
3. By studying Australia in its various contexts.

It is the aim of the University to achieve its objectives by creating an inspirational working environment for all its staff, students and visitors.

In each of its endeavours, the University strives to achieve at the levels of the world's great universities.

Location

The University campus has over 200 buildings and occupies 145 hectares adjacent to the city centre of Canberra. The University also has a number of smaller campuses:

- > Mount Stromlo Observatory (west of Canberra)
- > Siding Spring Observatory (near Coonabarabran, western New South Wales)
- > North Australia Research Unit (Darwin, Northern Territory)
- > Kioloa (coastal campus near Bawley Point, on the New South Wales South Coast)
- > ANU Medical School – The Canberra Hospital campus
- > ANU Medical School – Calvary Hospital
- > Health Facilities in South East New South Wales



Further information about ANU can be found at anu.edu.au/about

University Colleges

ANU has seven academic colleges, each housing the schools and research centres that contribute to the various broad disciplines. The ANU Colleges link research and teaching at undergraduate, postgraduate and higher degree levels. They undertake world-class research and provide education programs at the highest standards.

The University recognises the need to strengthen strategic planning, align administrative support with these plans and ensure consistency of policy and procedure. The aim of the college structure is to promote and formalise cooperation among the different contributors to disciplines in ANU.



ANU College of Arts & Social Sciences

The ANU College of Arts and Social Sciences (CASS) is the research and education college for the broad disciplines of the creative arts, humanities and the social sciences. The College has two research schools - the Research School of Social Sciences and the Research School of Humanities and the Arts – that cover the main disciplines to deliver leading research and degree programs.

> cass.anu.edu.au

ANU College of Asia & the Pacific

The ANU College of Asia and the Pacific (CAP) hosts the largest assembly of scholars dedicated to working on Asia and the Pacific in the English-speaking world. Organisationally the College comprises three large Schools - the School of Culture, History and Language (CHL); the Coral Bell School of Asia Pacific Affairs; and the Crawford School of Public Policy - and two Research Centres: the Regulatory Institutions Network (RegNet) and the Australian Centre on China in the World.

> asiapacific.anu.edu.au

ANU College of Science

The College consists of the Research Schools of Physics and Engineering, Earth Sciences, Chemistry, Astronomy and Astrophysics, and Biology, plus the Fenner School of Environment and Society, the Mathematical Sciences Institute, and the Australian Centre for the Public Awareness of Science. Academic staff within the ANU College of Science undertake world leading research and deliver research-led education on issues of global importance, supported by extensive international networks and world class facilities.

> cos.anu.edu.au

ANU College of Business & Economics

The ANU College of Business and Economics (CBE) seeks to advance knowledge through high quality education and research in the closely related areas of accounting, actuarial studies, econometrics, economic history, economics, finance, statistics, international business, management, marketing, and business information systems. It endeavours to do this through the provision of a range of undergraduate and graduate programs, and through its research, publications and contributions to the associated professions, commerce, industry and government.

> cbe.anu.edu.au

ANU College of Engineering & Computer Science

The ANU College of Engineering and Computer Science (CECS) comprises of the Research Schools of Engineering and Computer Science, and the 3Ai and Cyber Institutes. It offers undergraduate degrees in engineering, information technology and computer science along with masters and doctoral postgraduate programs. The College undertakes basic and applied research in information and communications technologies, materials and manufacturing, formal methods and logic, machine learning and vision, robotics and energy systems.

> cecs.anu.edu.au

ANU College of Law

The ANU College of Law (CoL) is Australia's national law school, committed to legal research and education at the highest level, and to striving for continuous improvement in the law for the benefit of national and international communities. The ANU Law School offers LLB Hons and Juris Doctor (JD) degrees, a Graduate Diploma in Legal Practice through the School of Legal Practice, and postgraduate research and coursework degrees.

> law.anu.edu.au

ANU College of Health & Medicine

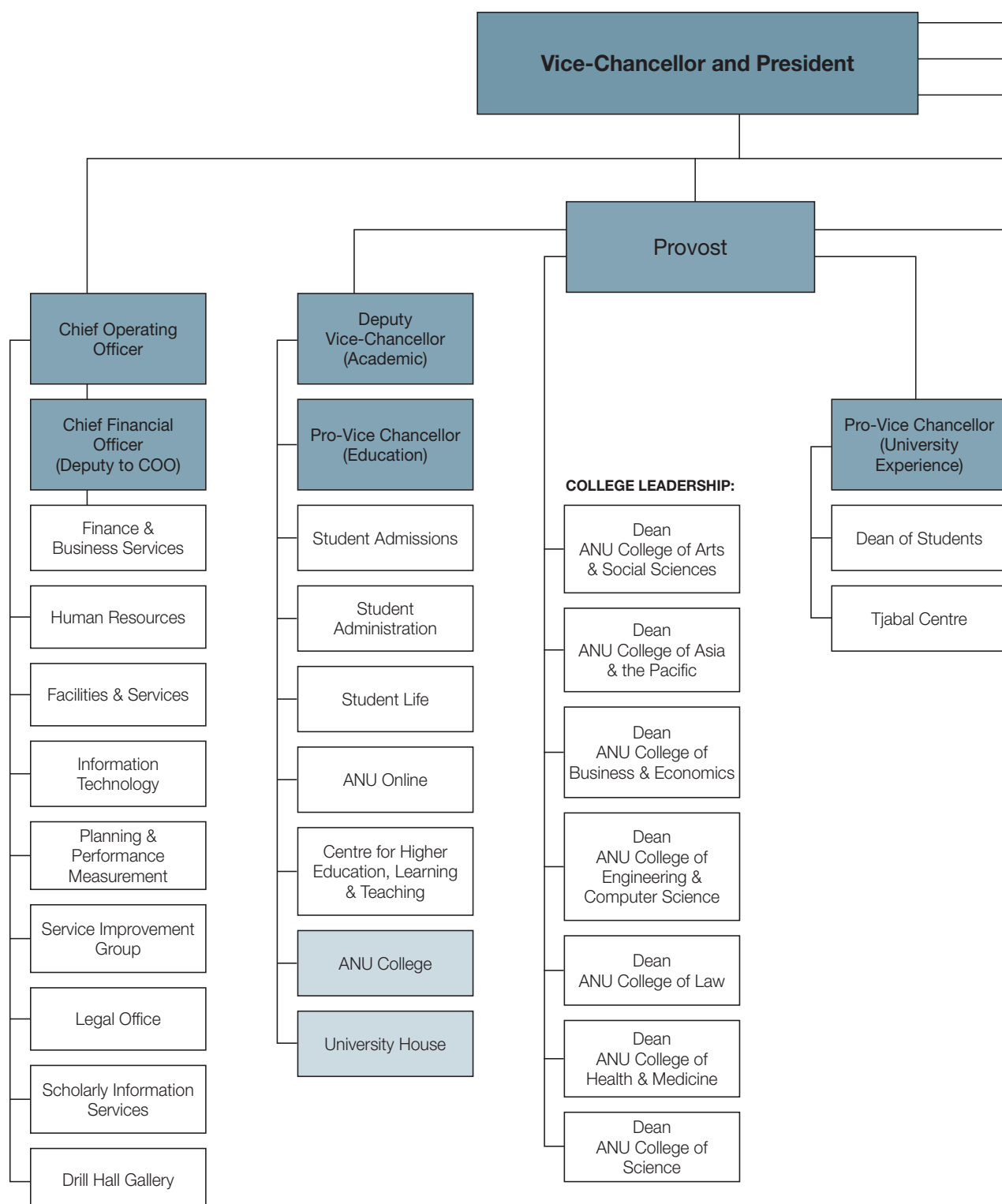
The ANU College of Health and Medicine comprises the ANU Medical School, the John Curtin School of Medical Research, the Research School of Psychology and the Research School of Population Health. These schools work together to deliver world-class research and education across the spectrum of medicine and health-related fields, working in partnership with the health sector at local, national and international levels.

> chm.anu.edu.au

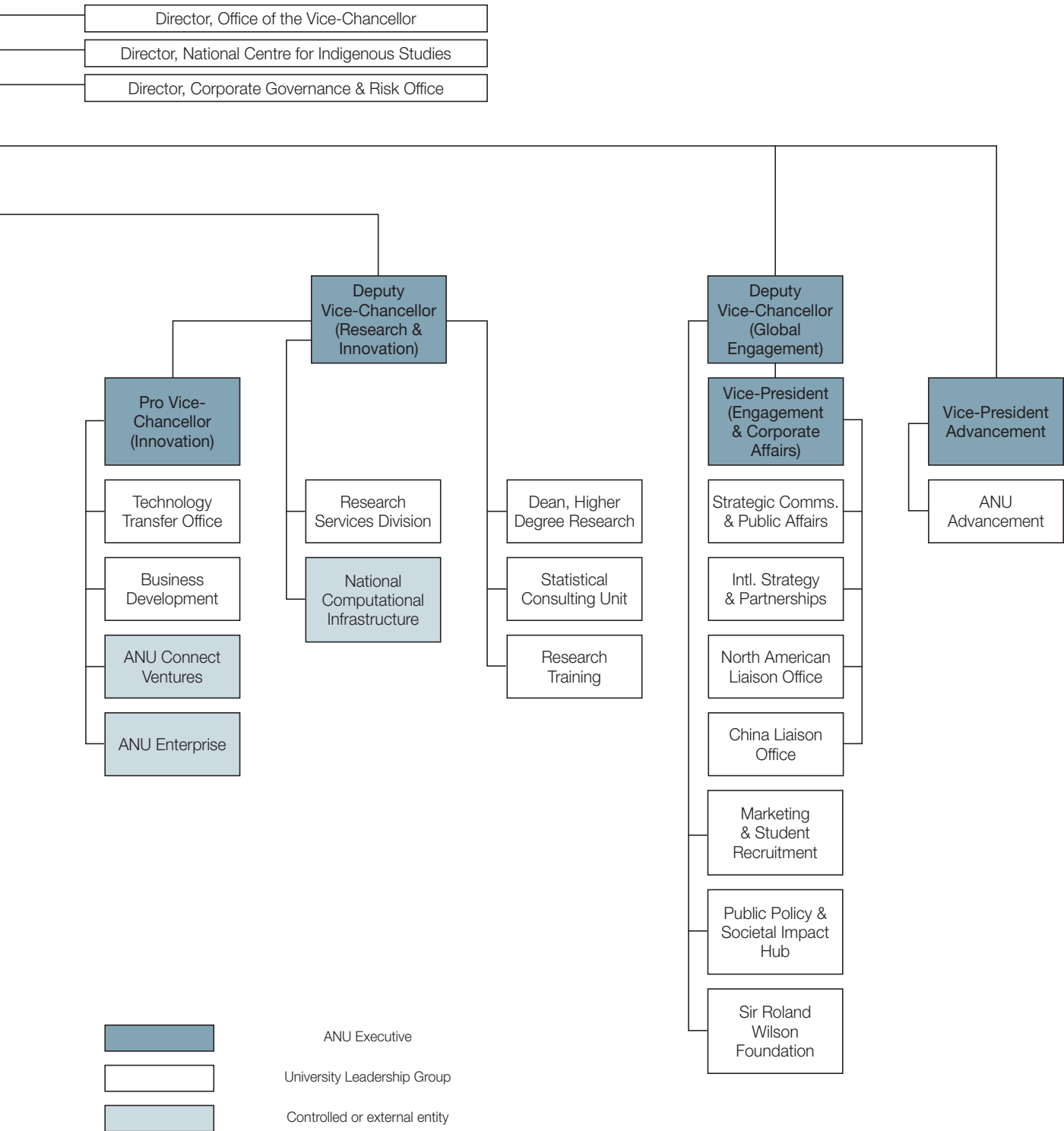


Further information can be found at
anu.edu.au/about/academic-colleges

ANU Executive Structure



INFORMATION FOR PROSPECTIVE CANDIDATES



Our Vision & Values

Our Vision

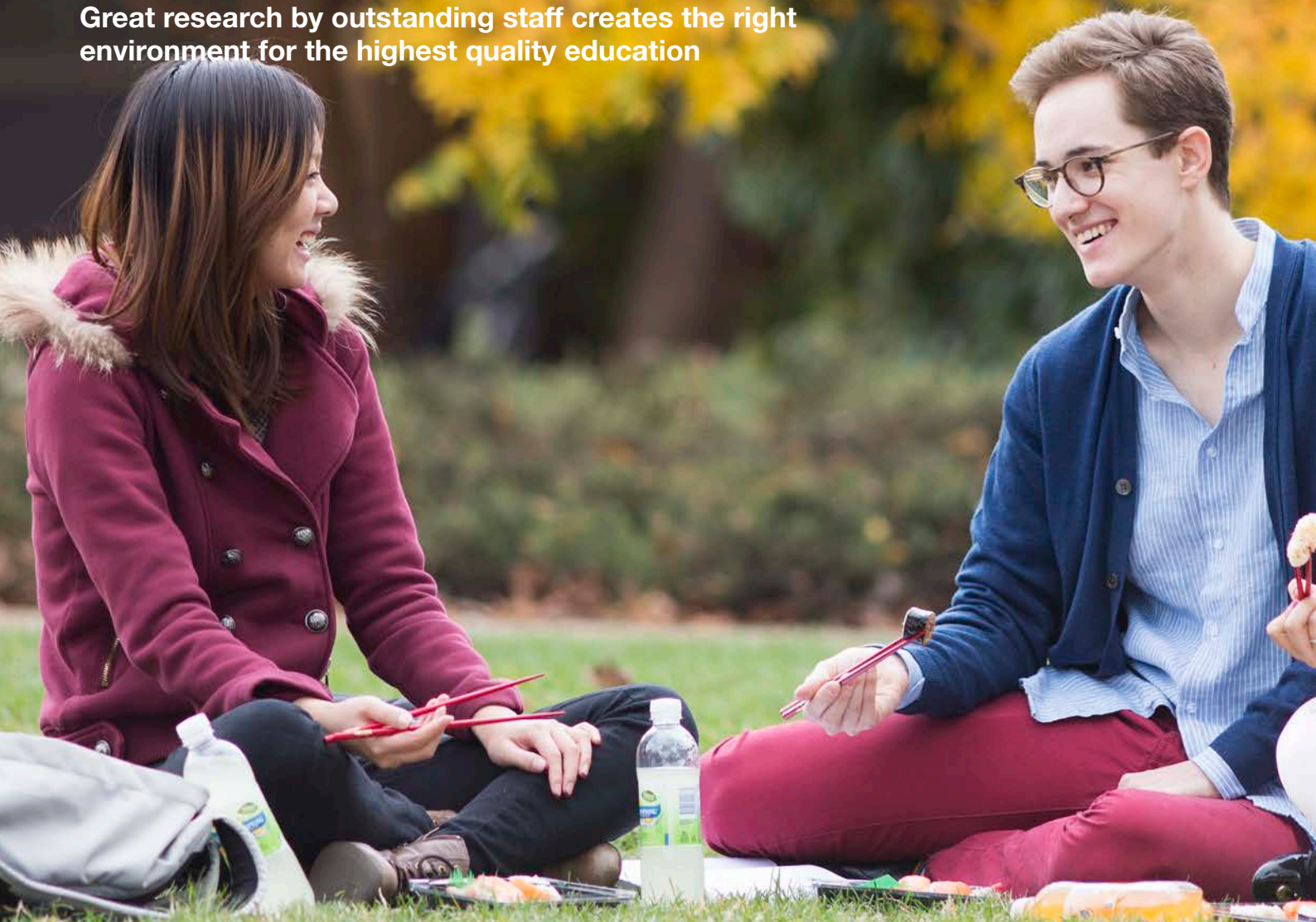
- > Contemporary ANU will sit among the great universities of the world, and be defined by a culture of excellence in everything that we do.
- > We will be renowned for the excellence of our research, which will be international in scope and quality, always measured against the best in the world. Our research investment will be strategic, taking a long-term view and focus on high-quality activities, high-impact infrastructure and areas of high national importance.
- > We will be renowned for the excellence of our undergraduate and graduate education: excellence in student cohort, excellence in teaching, excellence in student experience, and excellence in outcomes.
- > We will be renowned for the quality of the contribution our research and education make to societal transformation. We will identify emerging areas of need for the nation and provide research and education that will equip Australia to cope with challenges not yet imagined.
- > ANU research, education and contributions to public policy-making will change Australia and change the world. It will have impact.

Our Values

- > We bring a distinctive excellence to our work and have the confidence to pursue original ideas.
- > We are inclusive, open and respectful, reflecting the diversity of our nation.
- > We are committed to integrity and ethical behaviour.
- > We value, enable, reward and celebrate collegiality.
- > We embrace informed risk-taking in pursuit of our objectives.
- > We are committed to better outcomes for our community, the environment, our nation and the world.
- > We are committed to the service of our nation, through original thinking and through courage in advancing our ideas.

Excellence in education & student experience

Great research by outstanding staff creates the right environment for the highest quality education



Innovative teaching and learning

Our graduates will have a positive influence on the future. They are passionate, creative and capable of solving critical problems not yet imagined. They create and apply knowledge to improve the lives of people, the nation and the world.

In achieving the vision of a contemporary ANU, sitting among the great universities of the world, defined by a culture of excellence (ANU Strategic Plan 2017 – 2021), the University is committed to high quality learning and teaching.

This commitment acknowledges that students are the centre of learning and teaching at ANU. A partnership between students, academics, professional staff and the University forms the foundation for excellence in learning and teaching.

The Vision for Excellence in Learning and Teaching requires commitment and leadership across the University and at all levels. The University values, enables, rewards and celebrates excellence in learning and teaching.

Four key interdependent pillars – engaged students, inspirational academics, an enriching environment, a connected community – provide a frame of reference for aligning focus and effort to continuously improve the outcomes of learning and teaching at ANU.



Our responsibility to Indigenous Australia

As Australia's national university one of our defining roles has been to contribute to the advancement of Australia's Indigenous peoples.

We contribute by graduating Indigenous students, as well as through game-changing research and direct engagement. Delivering on our Unique National Responsibilities with Indigenous communities. We provide an environment for debating the big issues and partnering with Indigenous Australia to advance the status, recognition and lives of Aboriginal and Torres Strait Islander peoples.

Although the proportion of Indigenous students at ANU is high by the standards of some of our peer universities, we remain far from parity with the population at large for undergraduates. The proportion of postgraduate and higher degree students is lower again, as is the proportion of

professional and academic staff. Through targeted activities we will work towards achieving parity with the proportion of Indigenous Australians in the overall population.

Research focused on Indigenous issues is broad in scope and has made a substantial contribution. ANU has strong Indigenous research leaders in a number of disciplines. However, our continued salience requires constant attention to impact, partnership with Indigenous communities and a commitment to novel and multidisciplinary approaches to our work.



Achieving equity

ANU is committed to equity and diversity as fundamental values. Australia has a diverse population and we are committed to providing opportunities and an inclusive and welcoming environment, to those of all backgrounds and identities.

As Australia's National University, we have a responsibility and an obligation to educate students from across Australia who have the capacity to succeed, no matter their background. It is for this reason that we have launched a pioneering program to transform the way we do admissions. We are undertaking an international first to link our admission, scholarship, and accommodation processes so that when we make a student an offer to university, they will at the same time know where they will be living and whether they have a scholarship to support them. We are reserving a place for domestic students in the top 2% of every school in Australia who have the capacity to succeed, ensuring students have access to a world class education no matter the socio-economic status of their school.

Alongside this we are undertaking a major scholarship drive to remove the financial barrier for some of our most capable but most disadvantaged students, whether they be indigenous, suffering a long term disadvantage, low-SES, or from interstate regional and remote areas. We now have a single application form that allows both excelling and disadvantaged students to access more than 200 scholarship opportunities across campus by answering just four questions. And we are looking at the whole person, requiring all undergraduate applicants to have engaged beyond the classroom to support themselves, their family or their community, to clearly signal the importance of engagement beyond studies to both academic and employment success.

Athena Swan

ANU has committed to the SAGE Pilot of Athena SWAN in Australia. Athena SWAN is an accreditation program that recognises, promotes and rewards excellence in advancing gender equity and diversity. ANU became an inaugural member of the SAGE Pilot project in 2016.

While the focus of the SAGE pilot is on Science, Technology, Engineering, Mathematics, and Medicine (STEMM) disciplines, ANU is also committed to gender equity in the Humanities and Social Science disciplines, as well as in our professional staff.



Lecturer / Senior Lecturer

All academic staff within the College are expected to undertake work in three areas of academic activity: education, research and service. The allocation of time to each area will reflect relative opportunities within the School, as well as individual appointment situations. The Lecturer/Senior Lecturer will:

- > Coordinate the language programs and/or coordinate courses in the programs, and significantly contribute to the delivery of the language courses, including course design, development of online materials and online delivery of lectures and tutorials.
- > Design, for each course, online sites within the ANU Learning Management System (LMS) ensuring that appropriate resource and activities are utilised to promote online learning of a second language.
- > Effectively develop course materials on the LMS to ensure accurate and current content and assessment.
- > Develop assessment aligned with the learning outcomes of courses.
- > Contribute to in-country or study abroad options as available in relation to their language program.
- > Provide support and feedback to ensure students develop as independent learners.
- > Contribute to other educational activities (e.g. guest lectures, short or intensive courses, and executive education).
- > Integrate research into teaching and implement innovative teaching methods that give effect to the University's commitment to providing a research-intensive education.
- > Undertake administrative duties associated with teaching.
- > Undertake research with a view to publishing original and innovative results through high quality academically recognised national and international outlets, to present research at ANU academic seminars and at national and international conferences, and collaborate with other academic staff both within and outside the University.
- > Actively seek and secure external funding, including through the preparation of research proposal submissions to external funding bodies.
- > Conduct collaborative and interdisciplinary research as a leader or research team member.
- > Collaborate with colleagues at universities in Australia and internationally, including as appropriate for their program.
- > Supervise students working on individual or group projects at undergraduate, honours, graduate-coursework levels. Assist with supervision of research students and supervise internships where available.
- > Undertake administrative tasks and professional practice within the School, the College and the wider ANU community at the direction of the School Director, including attendance and participation in academic staff meetings, participation in curriculum and accreditation reviews, and participation in committees in the wider university community.
- > Support education engagement by contributing to the social media presence in education and programs for the broader community (for instance through speaking at high schools).
- > Engage in initiatives to increase awareness of the ANU's role in language education for their language, for example, by speaking at conferences, workshops and other academic events.
- > Deliver educational enrichment, professional development or research training activities.
- > Contribute to teaching and learning leadership by providing peer support in teaching and learning, team teaching and examining theses.
- > Contribute to the governance, strategic planning, capacity building and inclusive culture of the University.
- > Engage with the local community and some communities nationwide in dealing with issues of local, regional and national significance. Engagement includes providing access to education and research, communicating and disseminating research results.
- > Comply with all ANU policies and procedures and in particular those relating to work health and safety and equal opportunity.
- > Other duties as required consistent with the classification level of the position.

Selection criteria

Lecturer (Academic Level B)

- 1.**
A PhD in the Humanities, Social Sciences or another related field, with a track record of independent research in the field as evidenced by publications in peer-reviewed journals and conferences, a record of developing and maintaining collaborations and by other measures such as awards, invitations to give talks at leading conferences etc.
- 2.**
An ability and commitment to win bids for competitive external funding to support individual and collaborative research activities.
- 3.**
Ability and willingness to teach at all levels. An ability to teach across multiple languages from the South East Asian and South Asian regions is desirable.
- 4.**
Willingness to deliver innovative online language courses, and contribute to their further development.
- 5.**
The ability to work as part of a team and to deadlines and to coordinate some team activities.
- 6.**
Excellent oral and written English language skills and a demonstrated ability to communicate and interact effectively with a variety of staff and students in a cross-disciplinary academic environment and to foster respectful and productive working relationships with staff, students and colleagues at all levels.
- 7.**
A demonstrated high-level understanding of equal opportunity principles and a commitment to the application of these policies in a University context.

Senior Lecturer (Academic Level C)

- 1.**
A PhD in the Humanities, Social Sciences or another related field, with a strong track record of independent research in the field as evidenced by cited publications in peer-reviewed journals and conferences, a record of developing and maintaining collaborations and by other measures such as awards, invitations to give talks at leading conferences etc.
- 2.**
A track record of articulating and prosecuting innovative research including winning bids for competitive external funding to support individual and collaborative research activities.
- 3.**
Evidence of effective and innovative teaching at all levels and of the ability to contribute to setting the education agenda of the School in the area of Hindi, Sanskrit, Thai, Indonesian, Tetum and/or Vietnamese. Willingness to deliver innovative online language courses, and contribute to their further development.
- 4.**
A track record of successfully supervising and graduating high quality PhD/Masters research students.
- 5.**
Excellent oral and written English language skills and a demonstrated ability to lead and work as part of a team to meet deadlines as well as communicate and interact effectively with a variety of staff and students in a cross-disciplinary academic environment and to foster respectful and productive working relationships with staff, students and colleagues at all levels.
- 6.**
A demonstrated high-level understanding of equal opportunity principles and a commitment to the application of these policies in a University context.

ANU College of Asia and the Pacific

The ANU College of Asia & the Pacific hosts the largest group of scholars dedicated to working on Asia & the Pacific in the English-speaking world.

INFORMATION FOR PROSPECTIVE CANDIDATES

We are delighted to introduce you to the ANU College of Asia & the Pacific, one of the world's leading centres for teaching, research and outreach on the region.

Since the founding of The Australian National University in 1946, the College has driven Australia's engagement and understanding of its neighbourhood. The work conducted here has established the University as a global centre of excellence in research, teaching and influence on Asia and the Pacific.

The College has its roots in the University's Research School of Pacific Studies and the School of Oriental Languages, established in 1946 and 1952 respectively. The Research School of Pacific Studies was a founding institution of ANU, formed to drive Australia's engagement with and understanding of its neighbourhood. The School of Oriental Languages was established to train diplomats and public servants in Chinese, and later Japanese, Bahasa Indonesia and Malay. Ten years later, the School became the ground-breaking Faculty of Asian Studies, the first and only faculty at an Australian university dedicated to a regional specialisation. In 2010, the Research School of Pacific and Asian Studies and the Faculty of Asian Studies merged to form the College of Asia & the Pacific.

Throughout its history, the College has prided itself on its teaching expertise and academic excellence. Notable current and former staff members include:

- > **Hedley Bull** - key international relations scholar
- > **Hugh White** - Australia's leading strategic and defence analyst

- > **Sir John Crawford** - pioneer in Asia-Pacific economics and public policy
- > **A.L. Basham** - author of *The Wonder That Was India*, which remains the most widely used introductory text on Indian civilisation
- > **Stephen Wurm** - the world's foremost expert on the languages of New Guinea
- > **Hilary Charlesworth** - world-renowned expert on international law and human rights
- > **Nicholas Evans** - leading expert on endangered languages

Today, the College hosts the largest number of regional experts and specialist academic programs in the English-speaking world, and plays a vital role in informing public policy and Australia's intellectual engagement with the societies, cultures and economies of Asia and the Pacific. The ANU Library also holds one of the best Asian collections in the world. Although the College remains unique for its regional focus, it also has an unwavering commitment to disciplinary strength, particularly in political science, economics, history, anthropology, law, archaeology and linguistics, with an enviable international standing across all these disciplines.

With the College's focus on Asia and the Pacific more relevant now than ever, ANU is indisputably the best place to prepare the next generation of regional specialists for the challenges of the Asian century.



School of Culture, History and Language

The education, research and outreach portfolio for the School can be grouped into four major themes that serve as virtual centres of interdisciplinary discourse and interaction.

INFORMATION FOR PROSPECTIVE CANDIDATES

The School collectively determines and funds annual Flagship projects that focus on one of the four broad themes of the School on a rolling basis. Staff are working within one or more of the themes described below:

- > Languages: delivers deep knowledge of the regions' languages including exploration of the nature, cultural context and historical development of Asian and Pacific languages. This includes the research priorities and mission of the Centre of Excellence for the Dynamics of Language;
- > Histories: explores recent and deep time historical change in Asian and Pacific nations and communities, social and political institutions, violence and reconciliations, origins of migration flows and the impact of colonisation, conflict and historical memory on the contemporary region;
- > Cultures: charts the transformations and interconnections of Asian and Pacific cultures, including the dynamics of development, media, technologies, urbanization and migration and changes in individual and collective identities grounded in race, place, gender, nation, region and religion;
- > Environments: links archaeological knowledge of deep time ecological change with contemporary humanities scholarship addressing the urgent issues of climate change and the imminent challenges of food and water security, displacement and conflict in Asia and the Pacific. This includes the research priorities and mission of the Centre of Excellence for Australian Biodiversity and Heritage.

Some facts we are proud of

- > The School of Culture, History and Language's has the best and broadest Asian and Pacific language instruction in Australia.
- > The disciplines of Anthropology, Archaeology, History and Languages are ranked as the best in Australia and within the top 10 in the world in global rankings tables.
- > The School of Culture, History and Language is home to four Australian Research Council (ARC) Laureate Fellows.
- > The School of Culture, History and Language hosts two of the nation's ARC Centres of Excellence that are at the frontier of research and training in linguistics and archaeology: Centre of Excellence for the Dynamics of Language (CoEDL); Centre of Excellence for Australian Biodiversity and Heritage (CABAH).
- > The School of Culture, History and Language academics are members of the national academies of humanities and social sciences in Australia, the USA, and the UK.
- > The School of Culture, History and Language's academics are regularly recognised for their innovative teaching methods.



ANU Snapshot

#1

AUSTRALIAN UNIVERSITY

The Australian National University is ranked first in Australia and 24 in the world.¹

36%

INTERNATIONAL

36% of the students are international

50%

POSTGRADUATE

Half of the students are postgraduate (coursework and research)

50/50

MALE/FEMALE

The student population has equal gender representation.

84%

STAFF HAVE A DOCTORATE

84% of the teaching and research staff have a doctorate.

73%

STUDY HASS

73% of students are studying the Humanities and Social Science disciplines.

#1

EMPLOYABILITY

Ranked top in Australia for producing the most employable graduates²

25,000

STUDENTS

25,000 students enrolled at ANU⁴

6

NOBEL LAUREATES

Six Nobel Laureates among our staff and alumni

108,043

ALUMNI

Total number of alumni³

1

APPLICATION

One application for admissions, scholarships and accommodation for domestic undergraduate school leavers

6,000

ON-CAMPUS BEDS

The University offers over 6,000 on-campus beds to students from 2019

(1) QS World University Rankings 2017/18; 2018/19 Quacquarelli Symonds (QS) World University Rankings
(2) The Global Employability Ranking 2017 (3) As at 31 December 2017 (4) As at 31 December 2017



One of the world's most liveable cities

The power of surprise

Canberra has the power to surprise, with its abundance of food, wine, art, culture, ideas and innovation. As an evolving city, this element of surprise continues even once you've made Canberra your home, with new developments, events and opportunities constantly emerging to keep life interesting.

About Canberra

Canberra is also a planned city – designed to maximise opportunities for work and play. As our Nation's Capital, big ideas emerge, circulate and grow here, thanks to unique links between leading thinkers in business, government, education and research. Our dynamic economy, highly educated workforce and an innovative business culture provide career and business opportunities unique to Canberra.

Our healthy appetite for outdoor pursuits is enhanced by the natural resources available: from sailing on Lake Burley Griffin, mountain biking at the world class Mount Stromlo facility or heading up to the Snowy Mountains for a day on the slopes. We are also home to most of Australia's major national cultural institutions, with whom the University has a close relationship, and a cultural calendar overflowing with international exhibitions, arts festivals and entertainment.

Where to Live

The architects who designed Canberra, Walter and Marion Burley Griffin, had a master plan to create a series of 'satellite cities' separated by nature reserves and connected with major roads. Today their vision lives on, with Canberra divided into seven distinct regions of residential suburbs, each serviced by a central business district.

The resulting benefits are that commuting times are short. Employment hubs are virtually on your doorstep and recreational facilities are within walking distance, regardless of where you live.

Find information on each district and the suburbs contained within them through the ['Explore Canberra' map](#).

Education and Childcare

Canberra nurtures the pursuit of dreams from the ground up. Here families are provided with the supportive services, facilities and environments to raise happy, inspired and resilient children. Community is crucial for the support of families and Canberra has a number of ways to connect families with each other through playgroups, family events and activities.

Find out more about Canberra's excellent childcare, preschool and school system [here](#).

Canberra has the lowest commuting times of all Australia's major cities

More than 25% of Canberra residents were born overseas

The region is known for four distinct seasons, enjoying 246 days of clear, crisp sunshine



Further information about Canberra visit canberra.com.au

How to apply

For a confidential discussion about the role, please contact Associate Professor Shunichi Ishihara, Deputy Director of the School of Culture, History and Languages.

To submit an application for this role, please provide the following information in Microsoft Word format:

1. A candidate statement which outlines both your vision for the role and an overview of your experience and skills as it relates to the parameters of the role and selection criteria.

This should be a narrative and no more than five pages.

2. A detailed CV.

3. Three referees including their email and phone contact details.

Referees will only be contacted after prior consultation with the candidate. It is the candidate's responsibility to ensure referees are willing to provide reports when contacted.

For a confidential discussion regarding this role and the application process, please contact:

Associate Professor Shunichi Ishihara
Deputy Director, School of Culture,
History and Language

E shunichi.ishihara@anu.edu.au
T +61 2 6125 4656

Anticipated timeframe for the appointment process.

Applications close:
Sunday, 27 January 2019
Shortlisting of candidates:
Early February 2019
Interviews:
Mid February 2019
References and negotiation:
Thereafter interviews.

ANU reserves the right to appoint by invitation.

On behalf of the University and as part of the application and appointment process, candidates may be requested to provide proof of their identity and citizenship and give permission for verification of their tertiary qualifications and a police background check.