



THE UNIVERSITY OF
**WESTERN
AUSTRALIA**



CANDIDATE INFORMATION BOOKLET

The University of Western Australia
Professor and Head of Nursing
and Midwifery

Welcome

Thank you for your interest in the position of Professor and Head of Nursing and Midwifery at The University of Western Australia (UWA). This position offers a unique opportunity to introduce and embed the vital disciplines of Nursing and Midwifery into our existing range of multi-disciplinary health and care related courses.

UWA has an outstanding reputation for excellence in teaching, learning and research and, through its Vision 2030, the University is set to become an energetic centre for innovation with a mission to inspire students, staff and stakeholders alike to make a difference to the world.

Joining UWA will place you at the forefront of excellence, where you can challenge convention and make the most of unlimited possibilities. It is not just one of the top 100 universities in the world (QS World University Rankings, 2025), it is an environment where the successful candidate can have a real impact and encourage others to do the same.

We offer access to an excellent support network committed to creating change, from membership in the Group of Eight, the coalition of leading research-intensive Australian universities, to colleagues who are academic leaders in the broadest sense having established international reputations as outstanding teachers and researchers.

We are seeking an exceptional strategic leader who has the vision and energy to establish an evidence-based education and research portfolio across the Disciplines of Nursing and Midwifery. The focus will be on the development of cutting-edge courses designed to equip future generations of graduates with the knowledge and skills required to meet changing health care needs and provide leadership in the delivery of nursing and midwifery care.

This is a truly exciting opportunity to work within our institution at the most dynamic time in its history. We look forward to hearing from like-minded candidates.



Professor Amit Chakma
Vice-Chancellor

UWA is a global leader in health and biomedical sciences education and research

The University of Western Australia (UWA) is at the centre of health advancement through clinical, health, and biomedical education, discovery and translational research and best practice.

UWA health and life sciences are the engine room of workforce development and discovery that enables innovation and better health outcomes. We prepare work-ready graduates for health professional roles and undertake research that enhances discovery and evidenced based clinical practice. This is driven by our strong partnerships with Government, health care providers, Aboriginal Community Controlled Health Organisations and industry focused on the common goal to meet health workforce needs and improve the health of our communities.

UWA has a strong suite of health courses, including the Doctor of Medicine, Doctor of Dental Medicine, Doctor of Optometry, Master of Clinical Audiology, Master of Pharmacy and Bachelor of Social Work (Honours).

Nurses and midwives play an increasingly important role in enhancing quality of life and health outcomes. This new initiative to add the disciplines of nursing and midwifery to our academic portfolio in health will fill a vital gap and complement the work of the existing health disciplines being undertaken through UWA. We expect all our graduates to contribute to the health workforce in Western Australia (WA) and nationally by increasing capacity and demonstrating leadership and advanced practice expertise through high quality, expert clinical practice and research.

Introducing the disciplines of nursing and midwifery at UWA will help to address the identified workforce gaps across primary care, long term care, home care, disability and acute care across Australia, including remote and rural communities. The unique geographical nature of WA requires innovative education approaches to address health workforce reform and health equity. These are essential to develop a work-ready health workforce tailored to the whole of WA, including urban, regional, rural, and remote communities.

The proposed suite of courses will meet the aspirations of students, from a range of backgrounds, who wish to enrol at a prestigious, research-intensive university, maximise the time spent in their local communities and pursue a career pathway to advanced practice and clinical leadership. The courses will build on the reputation and innovative and pedagogic strengths of UWA and will complement the growing portfolio of contemporary health and social care courses being delivered.



Professor and Head of Nursing and Midwifery

ABOUT THE ROLE

The Professor and Head of Nursing and Midwifery will provide vision and dynamic strategic leadership to firmly establish nursing and midwifery as world class disciplines at UWA. They will secure the growth of these disciplines within UWA and champion them in all internal and external activities. A pivotal focus will be to inspire and support a strong, talented team of academics and clinical academics to ensure the successful delivery of the nursing and midwifery portfolio. Leadership will also be required to develop and maximise opportunities for inter-professional learning and research within the University and in its regional sites.

A further key component of this role will be the creation and maintenance of a strong collaborative ethos through engagement and partnership with a diverse range of key stakeholders, building on our existing relationships and establishing new ones. These include partners and stakeholders across professional, Government, community, commercial, research and policy organisations across WA. This remit will extend to fostering targeted national and global academic collaborations.

The Professor and Head of Nursing and Midwifery will provide leadership in the creation of cutting edge undergraduate and postgraduate courses in nursing and midwifery. The new education and research portfolio will be co-designed with our key stakeholders, Aboriginal and Torres Strait Islander organisations and industry partners. This will be pivotal to ensuring that our graduates are equipped with the knowledge, skills and attributes

required to meet the future demands of evidence-based nursing and midwifery care and clinical leadership. To achieve this, all aspects of the academic agenda must be characterised by innovative approaches to teaching, research and work integrated learning, embracing state of the art technologies.

The courses will incorporate flexible entry pathways and postgraduate degrees that will provide opportunities for students to achieve qualifications in nursing and midwifery as well as routes leading to advanced and specialist practice and clinical research roles. We anticipate that all students will gain experience of primary, long term and acute care practice in rural, regional and metropolitan settings. The initial focus of regional activities will be in the Midwest, Pilbara and the Great Southern regions, building on existing UWA facilities at the UWA Albany Campus, the Western Australian Centre for Rural Health and Rural Clinical School of Western Australia sites in Geraldton and Karratha. Metropolitan activity will focus on the Perth and Peel regions, with regionally based students being offered study schedules which maximise learning opportunities in their local communities.



KEY RESPONSIBILITIES

Provide strong leadership to ensure outstanding teaching and learning outcomes.

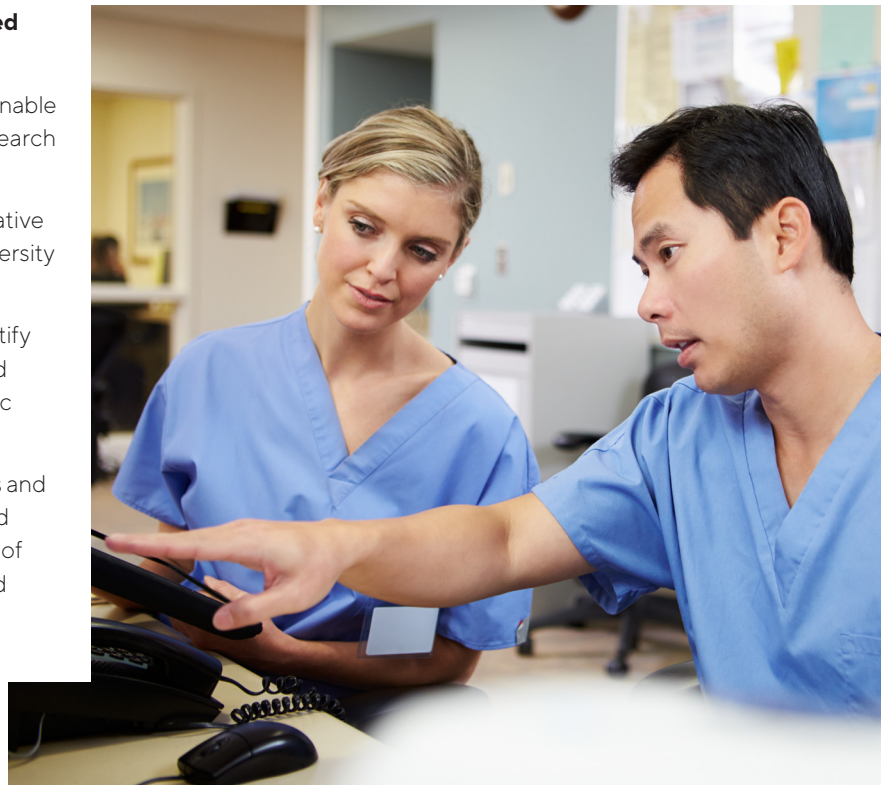
- Demonstrate vision, passion and commitment in creating a world-class, innovative and contemporary portfolio of undergraduate and postgraduate nursing and midwifery degree courses.
- Direct the development of innovative, contemporary and evidence-based curricula, including work-integrated and inter-professional learning, that meet the needs of students based in regional and urban areas of WA and beyond.
- Create and sustain an ethos of partnership working with the health industry, and other stakeholders to ensure that courses meet requirements for a fit-for-purpose nursing and midwifery workforce.
- Develop and implement a framework for academic team based on practice credibility and maximise opportunities for joint appointments with health industry partners.
- Contribute to the wider University education, training and innovation agendas related to learning and teaching.

Provide strong leadership to ensure research and evidence-based teaching and practice is embedded within the discipline areas.

- Develop and implement a strategy to create a sustainable research and scholarship culture and promote research related career pathways.
- Promote internationally competitive and collaborative research in the disciplines, consistent with the University strategies, policies and procedures.
- Build strategic alliances to attract funding and identify collaboration opportunities with government and industry, the commercial sector and philanthropic sources.
- Create significant new knowledge in the disciplines and disseminate it through publication in highly ranked peer reviewed journals to enhance the reputation of the disciplines, and the University at a national and global level.

Provide strong leadership in Service and Engagement Activities.

- Make an outstanding contribution to collegial life within the disciplines, across the University and beyond.
- Provide leadership and strategies for fiscal management of the disciplines and establish a financially responsible pathway to growth.
- Ensure that the disciplines are securely resourced and supported by the University in order to provide students with equitable and high-quality experiences throughout their journey.
- Provide robust leadership across University governance agendas.
- Represent and promote UWA through significant involvement in professional associations, non-academic partnerships (e.g. government, non-government organisations and industry), and other external activities.
- Attract funding, donations and sponsorships from a range of philanthropic, government and industry sources.



SELECTION CRITERIA

- Hold current registration or be eligible for registration with the Nursing and Midwifery Board of Australia (NMBA) through the Australian Health Practitioner Regulation Agency (AHPRA) as a Registered Nurse and/or Midwife.
- Hold a PhD in an academic field that supports professional practice, health professional education, public health or research/evaluation and/or other higher professional qualifications appropriate to the discipline(s) and/or equivalent professional experience and standing in nursing and/or midwifery.
- Lead the vision for the future development of the nursing and midwifery disciplines with the ability to inspire and motivate others commitment to strategic objectives.
- Evidence of a strong and credible professional national and global reputation and profile.
- Evidence of leading external engagement and political awareness with experience of networking, influencing and operating effectively in different environments and sectors.
- Demonstrated ability to think strategically and plan effectively to identify priorities, manage risks and meet goals.
- Expertise and experience of building and sustaining constructive external engagement with government and industry stakeholders, partners and collaborators.
- Evidence of the robust fiscal management of large budgets and experience of successful negotiation for additional resources where required.
- Evidence of a strong track record of successful team leadership with excellent interpersonal, communication and advocacy skills.
- Demonstrated expertise and experience in leading the implementation of innovative approaches to teaching and learning, including the use of state-of-the-art educational technologies in the delivery of nursing and/or midwifery curricula.
- Demonstrable commitment to developing and leading inclusive practices and extending equality of opportunity and experience for all learners and colleagues, including Aboriginal and Torres Strait Islander peoples.
- Proven track record of success as the leader of research, scholarship or practice development activities with successful funding gained from competitive grant sources, industry government, charities and/or philanthropic sources.
- Promote a collegiate research environment that promotes successful and on-time completion of Higher Degree Research students.

SPECIAL REQUIREMENTS (SELECTION CRITERIA)

- Current National Police Clearance Certificate
- Be immunised as outlined in the *Australian Immunisation Handbook*, UWA guidelines, and WA Government's Department of Health's COVID-19 Health Worker and Residential Aged Care Worker Directions
- Occasional travel within the state and interstate may be required
- Current C-class driver's licence.



Conditions of Employment

The appointment will be tenurable.

An attractive and flexibly constructed remuneration package will be negotiated and will include:

- professorial salary
- employer contribution to superannuation of 17% (standard employee contribution is 7%)
- eligibility for sabbatical leave
- generous leave provisions and salary packaging
- relocation assistance including airfares (if applicable)
- flexible working hours, excellent work-life balance and occupational healthcare services





About the University

The University of Western Australia (UWA) was established in 1911 as the State's first university – it was also the first free university in Australia, actively promoting equal access to tertiary education for all social classes. Today, UWA is among the top 100 universities in the world, number one in Western Australia and is one of Australia's most respected research institutions.

UWA is a leading global university, renowned for excellence in education and research. The University was rated 77th in the QS World University Rankings (2025), 101st in the Academic Ranking of World Universities (2023) while the Times Higher Education World University Rankings (2024) rates us 143rd globally. In the Good Universities Guide (2024) we were awarded a five-star rating for Student-Teacher Ratio, Student Demand and International Student Progression Score.

As one of Australia's leading research-intensive universities, UWA operates more than 39 intensive research centres and 22 schools, in addition to enjoying a broad range of successful industry partnerships.

The University is a member of the internationally recognised Group of Eight universities and a foundation member of the Matariki Network of high-quality research-intensive universities, with a particular focus on student experience.

Find out more about UWA:
uwa.edu.au/about-us/about-uwa



One of the world's great cities

WELCOME TO **PERTH**

Home to more than 2 million people, Perth is the closest major Australian capital city to Asia and is the world's 12th most liveable city (Economist Intelligence Global Liveability Index 2023).

Perth enjoys more sunshine than any other capital city in Australia. It offers an eclectic mix of restaurants, shopping and cultural experiences, as well as natural beauty in the shape of magnificent beaches, beautiful wineries and one of the world's largest inner-city parks – Kings Park. UWA's historic campus sits on the beautiful Swan River, and is just 10 minutes from the city's central business district and nearly as close to the State's finest beaches.

Find out more about our location:

uwa.edu.au/about-us/location-and-campuses

How to apply

Thank you for your interest in the position of Professor and Head of Nursing and Midwifery at the University of Western Australia.

To apply for this position, please include the following:

- A statement that clearly demonstrates the extent to which you satisfy each of the selection criteria.
- A Curriculum Vitae that provides your personal details, qualifications and work history.
- You may also submit an additional statement (1 page max) outlining any personal circumstances which should be considered when assessing your application. Applicants who have experienced periods of academic/professional interruption or other relevant events can include a description of achievements relative to opportunity in this statement.
- The name, email, mailing address and phone contact details of three referees who can be contacted for a confidential report. Your permission will be sought before referees are contacted.

The University of Western Australia provides visa sponsorship for international appointees.

LODGING YOUR APPLICATION

Applications must be submitted online at [UWA jobs \(Prospective Staff\)](#)

Applications close: **Sunday, 1 September 2024**. If you would like to discuss the position in confidence, please contact:

Professor Garry Fitzpatrick

Tel: +61 418 950 868

Email: garry.fitzpatrick@uwa.edu.au

Applications close on **Sunday, 1 September 2024**.



THE UNIVERSITY OF
**WESTERN
AUSTRALIA**

The University of Western Australia
35 Stirling Highway Perth, WA 6009