

Senior Lecturer in Biomedical Sciences (Anatomy and Physiology)

School of Community Health
Faculty of Science

Classification	Level C
Delegation Band	Delegations and Authorisations Policy (see Section 3)
Nature of Employment	Fixed term
Workplace Agreement	Charles Sturt University Enterprise Agreement
Date Last Reviewed	October 2019

Our University Values



Our Core Competencies

Charles Sturt University (CSU) staff are expected to demonstrate the following competencies:

Set Direction and Deliver Results

- Creating and innovating.
- Delivering results and meeting customer expectations.
- Entrepreneurial and commercial thinking.

Collaborate with Impact

- Relating and networking.
- Working with people.
- Persuading and influencing.

Lead Self and Others

- Adhering to principles and values.
- Deciding and initiating action.
- Adapting and responding to change.

Faculty of Science

The Faculty of Science has more than 9000 students and over 500 staff dedicated to advancing scientific knowledge. It delivers flexible, innovative teaching programs designed to produce job-ready graduates for the professions. A leader in strategic and applied research in a wide array of sciences it enhances and extends knowledge, trains and educates future researchers and provides scientific solutions to current challenges. The staff and students in the Faculty achieve this through ethical practice, professional collaborations, industry involvement and a commitment to continual improvement.

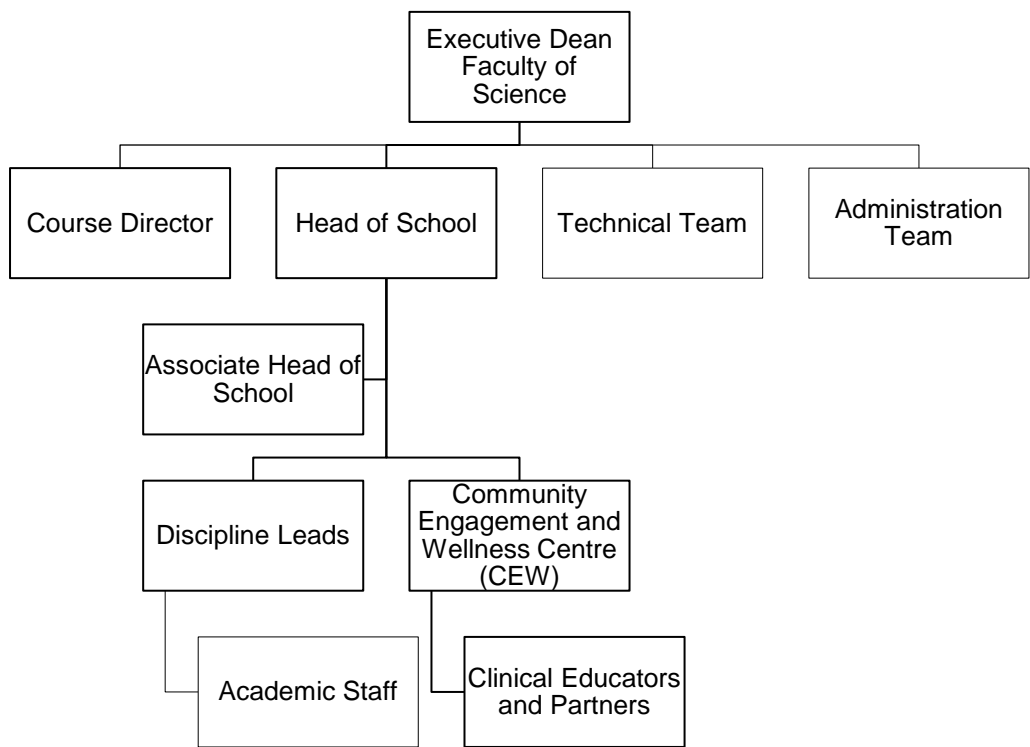
School of Community Health

The School of Community Health has a diverse range of staff who work together in the pursuit of excellence in teaching, research and community engagement. The School is focused on five professional courses including Health and Rehabilitation Science, Occupational Therapy, Physiotherapy, Podiatry and Speech Pathology.

In teaching we work to enable students to reach their full potential so they enhance the communities in which they work as graduate health professionals. Our research strengths have been developed through cooperative methods that link researchers from a range of backgrounds with communities.

Staff in the School of Community Health are committed to work with regional and rural communities to train and graduate future health professionals; we use research to find answers to community questions; and we work together to support people to become agents for positive change within their community.

Organisational Chart



Reporting Relationships

This position reports to: Head, School of Community Health

This position supervises: N/A

Key Working Relationships

- Head of School
- Associate Head of School
- Courses Director
- Discipline Lead
- Faculty and School Staff

Position Overview

The Senior Lecturer in Biomedical Science (Anatomy and Physiology) will actively engage in teaching, research and curriculum development related to biomedical sciences in the School of Community Health. The appointee will be primarily responsible for teaching neurology and anatomy. They will be expected to use online and face to face models of subject delivery in their teaching and will be involved in teaching and co-ordinating cross-campus subjects and via distance education. The appointee will participate and demonstrate leadership in the administration and ongoing curriculum development and progress an active research profile aligned to the strategic direction of the School and University.

Principal Responsibilities

- Make a significant contribution to the development, implementation and promotion of CSU learning and teaching methodologies, processes, technologies and tools to deliver and lead high quality student centred learning opportunities in the relevant discipline and as required to meet the teaching needs of the University. Achieve excellence in teaching in a range of delivery modes, which may include face to face and online teaching and assessment.
- Build strong professional relationships with students and provide timely and appropriate consultation and feedback.
- Contribute significantly to collaborative processes to design, deliver and continually improve high quality courses and learning experiences for students including the giving and receiving of constructive feedback.
- Provide leadership and manage the convening, coordination and delivery of subjects and/or courses, as required.
- Provide mentoring and coaching to support the academic development of colleagues.
- Establish and maintain strategic relationships and networks with a range of stakeholders including community, government and industry/professional bodies.
- Expand current knowledge and understanding of the relevant discipline through original contributions to industry engagement and/or scholarly activities or similar.
- Provide leadership and manage small research teams which contributes to the development of the profession, discipline and/or community.
- Conduct ethical, high quality research/creative works to his/her discipline at a national level through scholarship, publication and presentation.
- Develop and execute a research plan which aligns with CSU's Research Plan and objectives including pursuing funding opportunities and maintaining up-to-date research records within CSU's research database.
- Identify and create opportunities for collaborative research projects with internal and external researchers and stakeholders.
- Provide leadership and foster partnerships with the professions that bring direct benefit to the strategic work of the university, in terms of teaching, workplace learning, course profile and/or areas of research strength.

- Make a significant contribution to the development and improvement of policy and practice through involvement in professional/industry associations, accreditation authorities, conference organisations, advisory bodies, and national or international delegations, consistent with the University's Outside Professional Activities Policy.
- Actively contribute to the governance, marketing and promotion, and administrative activities to facilitate the work of the Faculty/School.
- Other duties appropriate to the classification as required.

Physical Requirements

- Physically able to sit for extended periods of time to perform reading, writing and computing related activities including keyboard and mouse operations;
- On occasion travel in/drive a university vehicle distances up to 500kms per day within the terms of the University's Driving Hours Guidelines and Policy available at:
<https://policy.csu.edu.au/view.current.php?id=00176>
<https://policy.csu.edu.au/view.current.php?id=00184> .

Selection Criteria

Applicants are expected to address the selection criteria when applying for this position.

Essential

- A. A doctoral qualification relevant to biomedical sciences or equivalent accreditation and standing.
- B. Record of significant research/publication or professional activity relevant to the discipline area at a national level, which demonstrates a capacity to make an autonomous contribution.
- C. Comprehensive knowledge and understanding of contemporary anatomy and physiology, with emphasis on neuroscience, gained through industry experience and/or scholarly activities or similar, that is relevant to allied health professions within the School of Community Health.
- D. Demonstrated ability to lead others in the delivery of high quality course and subject design, in in the delivery of high quality student centred learning and teaching at an undergraduate and post-graduate level, that includes the capacity to incorporate new technologies and new approaches to teaching and learning.
- E. Demonstrated ability to build partnerships, effectively liaise with academic colleagues and work as a team member AND demonstrated effective communication and interpersonal skills including applying culturally respectful, inclusive and safe practices in the workplace.

Desirable

- F. Previous online academic experience.

Information for Prospective Staff

Your Application

E-recruitment is the method by which CSU manages its recruitment processes and it is preferred that all applications be lodged using this method. Please refer to www.csu.edu.au/jobs/.

If intending applicants are unable to access this website, please contact the HR Service Centre on 02 6338 4884.

Staff Benefits

CSU is committed to providing an employment environment that fosters teamwork, innovation, reflective practice, continual learning, knowledge sharing and opportunities for staff to achieve their full potential. CSU is committed to providing a flexible working environment that encourages employees to live a balanced lifestyle, combining work and family responsibilities.

To find out more: <http://www.csu.edu.au/jobs/working-with-us/benefits-and-rewards>.

Essential Information for Staff

- All employees have an obligation to comply with all the University's workplace health & safety policies, procedures and instructions and not place at risk the health and safety of any other person in the workplace;
- All employees are required to be aware of and demonstrate a commitment to the principles of equal opportunity in the workplace;
- All employees are to ensure the creation and maintenance of full and accurate records of official University business adheres to the University's Records Management Policies; and
- All employees are expected to undertake an induction program on commencement.

Further information regarding the policy and procedures applicable to Occupational Health and Safety and Equal Opportunity can be found on the CSU website <http://www.csu.edu.au/division/hr/>.

Further information regarding the policies and procedures of CSU can be found in the CSU Policy Library at: <https://www.csu.edu.au/about/policy>.

The following links are listed from [CSU Policy Library](#) on relevant specific policies:

- [Code of Conduct](#)
- [Staff Generic Responsibilities Policy](#)
- [Delegations and Authorisations Policy](#)
- [Outside Professional Activities Policy](#)
- [Intellectual Property Policy](#)