

<b>Position</b>	Enrolled Nurse
<b>Classification</b>	Enrolled Nurse (Certificate and Diploma) EN/EN-MA/ENDP
<b>Division</b>	Rehabilitation, Aged and Palliative Care (DivRAP)
<b>Department / Section / Unit / Ward</b>	Geriatric Care
<b>Role reports to</b>	Operationally: > Nursing Director (DivRAP) Professionally: > Nursing Director (DivRAP)
<b>CHRIS 21 Position Number</b> Enter CHRIS position number	<b>Role Created: SALHN2023/24-XXXX</b>
<b>Criminal History Clearance Requirements</b> <input checked="" type="checkbox"/> National Police Check (NPC)	<b>Immunisation Risk Category</b> Category A (direct contact with blood or body substances)

## JOB SPECIFICATION

### Primary Objective(s) of role:

The Enrolled Nurse supports the Registered Nurse/Midwife in the provision of person-centred care consistent with regulatory and statutory requirements. Practice at this level is from novice to proficient Enrolled Nurse practice. Employees at this level work under the direction and supervision of the Registered Nurse/Midwife, however at all times the Enrolled Nurse retains responsibility for his/her actions and remains accountable in providing nursing/midwifery care.

The role supports the Geriatric Memory Support Unit which provides care for patients who are medically stable and are waiting transition to a community Residential Aged Care Facility.

The incumbent will provide service/peer leadership in line with the Division RAP purpose and impact; promoting the values within the Divisional Way for every patient, family and colleague encounter:

- **Our Impact** - 'We deliver a reliable health system. Patients and families are better prepared to live their lives.'
- **Our Divisional Way** - Respectful, Communicative, Supportive, Compassionate.
- **Our Purpose** - 'Optimising quality of life in Rehabilitation, Aged Care and Palliative Care Service.'

### Direct Reports: (List positions reporting directly to this position)

- > Assistants in Nursing

### Key Relationships / Interactions:

#### Internal:

- > Works under the direct and indirect supervision of a Registered Nurse and or Midwife
- > Maintains cooperative and productive working relationships within all members of the health care team

#### External:

- > Maintains relationships with non-government organisations or other government organisations

**Challenges associated with Role:**

Major challenges currently associated with the role include:

- > Working with patients and their families where there are multiple complexities and diverse cultural backgrounds.
- > Recognising and responding to clinical deterioration or other incidents and escalating appropriately.
- > Providing evidenced based care, developing clinical skills while keeping up to date with professional standards of practice and quality management initiatives consistent with organisational policies.

**Delegations:** (As defined in SALHN instruments of delegations)

(Levels / limits of authority in relation to finance, human resources, Work Health and Safety and administrative requirements as defined by Departmental delegations and policies.)

Financial	N/A
Human Resources	N/A
Procurement	N/A

**Resilience**

SA Health employees persevere to achieve goals, stay calm under pressure and are open to feedback.

**Performance Development**

It is your responsibility to actively participate in the Performance Review & Development Program which will include a six (6) monthly review of your performance against the responsibilities and key result areas associated with your position and a requirement to demonstrate appropriate behaviours which reflect a commitment to South Australian Public Sector and SALHN values and strategic directions.

**General Requirements**

Managers and staff are required to work in accordance with the Code of Ethics for South Australian Public Sector, Policies, Procedures and legislative requirements including but not limited to:

- > National Safety and Quality Health Care Service Standards.
- > *Work Health and Safety Act 2012 (SA)* and when relevant WHS Defined Officers must meet due diligence requirements.
- > *Return to Work Act 2014 (SA)*, facilitating the recovery, maintenance or early return to work of employees with work related injury / illness.
- > Meet immunisation requirements as outlined in the Immunisation for Health Care Workers in South Australia Policy Directive.
- > Equal Employment Opportunities (including prevention of bullying, harassment and intimidation).
- > *Children and Young People (Safety Act) 2017 (SA)*.
- > *Public Interest Disclosure Act 2018*.
- > Disability Discrimination.
- > Information Privacy Principles.
- > Relevant Awards, Enterprise Agreements, *Public Sector Act 2009*, *Health Care Act 2008*, and the SA Health (Health Care Act) Human Resources Manual.
- > Relevant Australian Standards.
- > Duty to maintain confidentiality.
- > Smoke Free Workplace.

- > To value and respect the needs and contributions of SA Health Aboriginal staff and clients and commit to the development of Aboriginal cultural competence across all SA Health practice and service delivery.
- > Applying the principles of the South Australian Government's Risk Management Policy to work as appropriate.
- > *Mental Health Act 2009 (SA)* and Regulations.

### Handling of Official Information

By virtue of their duties, SA Health employees frequently access, otherwise deal with, and/or are aware of, information that needs to be treated as confidential.

SA Health employees will not access or attempt to access official information, including confidential patient information other than in connection with the performance by them of their duties and/or as authorised.

SA Health employees will not misuse information gained in their official capacity.

SA Health employees will maintain the integrity and security of official or confidential information for which they are responsible. Employees will also ensure that the privacy of individuals is maintained and will only release or disclose information in accordance with relevant legislation, industrial instruments, policy, or lawful and reasonable direction.

### Special Conditions

- > It is mandatory that no person, whether or not currently working in SA Health, will be eligible for appointment to a position in SA Health unless they have obtained a satisfactory Background Screening and National Criminal History Clearance.
  - > Prescribed Positions under the *Child Safety (Prohibited Persons) Act 2016* and *Child Safety (Prohibited Persons) Regulations 2019* must obtain a Working with Children Clearance through the Screening Unit, Department of Human Services.
  - > Working with Children Clearance must be renewed every five (5) years.
  - > 'Approved Aged Care Provider Positions' as defined under the Accountability Principles 1998 made in pursuant to the *Aged Care Act 2007 (Cth)* must be renewed every 3 years.
  - > Appointment and ongoing employment is subject to immunisation requirements as per Risk Category identified on page 1.
  - > Depending on work requirements the incumbent may be transferred to other locations across SA Health to perform work appropriate to classification, skills and capabilities either on a permanent or temporary basis subject to relevant provisions of the *Public Sector Act 2009* for Public Sector employees or the SA Health (Health Care Act) Human Resources Manual for *Health Care Act 2008* employees.
  - > The incumbent may be required to participate in Counter Disaster activities including attendance, as required, at training programs and exercises to develop the necessary skills required to participate in responses in the event of a disaster and/or major incident.
  - > May be required to work within other locations of the Southern Adelaide LHN.
  - > Must have current South Australian driver's licence and willingness to drive a government plated vehicle when travelling for work to various settings.
  - > May be required to work off site, travel between locations and work within the client's own environment within the metropolitan region.
- May be required to work on weekends and/or as part of a 7-day roster and extended hours. Roster arrangements may be reviewed/varied, in order to meet organisational requirements.

Key Result Areas	Major Responsibilities
Direct/indirect patient/client care	<ul style="list-style-type: none"> <li>&gt; Commitment to delivering high quality and safe care consistent with the SALHN Integrated Governance Framework and Consumer Engagement Framework and Plan</li> <li>&gt; Demonstrates knowledge and skill in rehabilitation assessment, care and routine procedures for rehabilitation nursing practices</li> <li>&gt; Under the direction of a registered nurse makes decisions and takes initiative to plan and complete nursing care tasks within their scope of practice</li> <li>&gt; Engages with patients/clients to provide person centred care</li> </ul>
Support of health setting services	<ul style="list-style-type: none"> <li>&gt; Contributes to quality improvement</li> <li>&gt; Provides assistance to other members of the health care team in provision of care to individuals/groups, including overseeing the work of students</li> </ul>
Education	<ul style="list-style-type: none"> <li>&gt; Provides education to patients/clients, families and carers</li> <li>&gt; Contributes to the education of others</li> <li>&gt; Continue own professional development, seek learning opportunities and maintains own professional development portfolio of learning and experience</li> </ul>
Research	<ul style="list-style-type: none"> <li>&gt; Contributes to research as appropriate</li> <li>&gt; Recognises the importance of evidence based practice</li> </ul>
Professional leadership	<ul style="list-style-type: none"> <li>&gt; Under the guidance of a registered nurse coordinates and guides activities of student enrolled nurses and assistants in nursing</li> </ul>
Contribution to effective operation of unit	<ul style="list-style-type: none"> <li>&gt; Contributing to the development of an integrated team approach and culture which is highly responsive to the needs of our consumers</li> <li>&gt; Contributing to the promotion and implementation of the objects and principles of the Health Care Act 2008 and Public Sector Act 2009 (inclusive of the Code of Ethics for the South Australian Public Sector)</li> <li>&gt; Adhering to the provisions of relevant legislation including, but not limited to, the Equal Opportunity Act 1984, Work Health and Safety Act 2012 (SA) (WHS), Awards and Enterprise Agreements</li> <li>&gt; Demonstrating appropriate behaviours which reflect a commitment to the Department of Health values and strategic directions</li> <li>&gt; Undertaking training as required to attain and maintain required competency of skills and knowledge applicable to the role</li> </ul>

## 1. ESSENTIAL MINIMUM REQUIREMENTS

### Educational/Vocational Qualifications

- > Registered or eligible for registration as an enrolled nurse with the Nursing and Midwifery Board of Australia, and who holds, or who is eligible to hold, a current practicing certificate.
- > In order to administer medicines, must have completed a Board-approved program of study which includes an administration of medicines unit.

### Personal Abilities/Aptitudes/Skills

- > Effective verbal and written communication skills
- > Ability to work in a multidisciplinary team environment
- > Ability to prioritise workload, recognise and report changes in clinical condition
- > Ability to provide person-centred care and to understand how the patient and family experience is enhanced by the person-centred approach
- > Proven commitment to the principles and practise of:
  - EEO, Ethical Conduct, Diversity and Worker Health & Safety
  - Quality management and the provision of person and family centred care
  - Risk management

### Experience

- > Proven experience in delivering high quality and safe care consistent with the National Safety and Quality Health Care Service Standards. (Mandatory for all clinical positions.)

### Knowledge

- > Awareness of National Safety and Quality Health Service Standards
- > Understanding of Delegated Safety Roles and Responsibilities
- > Understanding of Work Health Safety principles and procedures
- > Understanding of Quality Management principles and procedures
- > Awareness of person and family centred care principles and consumer engagement principles and procedures

## 2. DESIRABLE CHARACTERISTICS (to distinguish between applicants who meet all essential requirements)

### Personal Abilities/Aptitudes/Skills

- > Ability to use technology and computer skills
- > Ability to practise with kindness and empathy

### Experience

- > Proven experience in basic computing skills, including email and word processing
- > Experience in assisting with quality improvement activities within a healthcare setting
- > Experience in Dementia Care

### Knowledge

- > Awareness of contemporary nursing and health care issues

### Educational/Vocational Qualifications

- > Additional education / qualifications in area of practice

### Organisational Overview

Our mission at SA Health is to lead and deliver a comprehensive and sustainable health system that aims to ensure healthier, longer and better lives for all South Australians. We will achieve our objectives by strengthening primary health care, enhancing hospital care, reforming mental health care and improving the health of Aboriginal people.

SA Health is committed to a health system that produces positive health outcomes by focusing on health promotion, illness prevention and early intervention. We will work with other government agencies and the community to address the environmental, socioeconomic, biological and behavioural determinants of health, and to achieve equitable health outcomes for all South Australians.

### SA Health Challenges

The health system is facing the challenges of an ageing population, increased incidence of chronic disease, workforce strategies, and ageing infrastructure. The SA Health Strategic Plan has been developed to meet these challenges and ensure South Australians have access to the best available health care in hospitals, health care centres and through GPs and other providers.

### Our Legal Entities

SA Health is the brand name for the health portfolio of services and agencies responsible to the Minister for Health and Wellbeing. The Department for Health and Wellbeing is an administrative unit under the Public Sector Act 2009.

### Governing Boards

The State Government is reforming the governance of SA Health, including from 1 July 2019 the establishment of 10 Local Health Networks, each with its own Governing Board.

Statewide	> Women's and Children's Health Network
Metropolitan	> Central Adelaide Local Health Network > Southern Adelaide Local Health Network > Northern Adelaide Local Health Network
Regional	> Barossa Hills Fleurieu Local Health Network > Yorke and Northern Local Health Network > Flinders and Upper North Local Health Network > Riverland Mallee Coorong Local Health Network > Eyre and Far North Local Health Network > South East Local Health Network

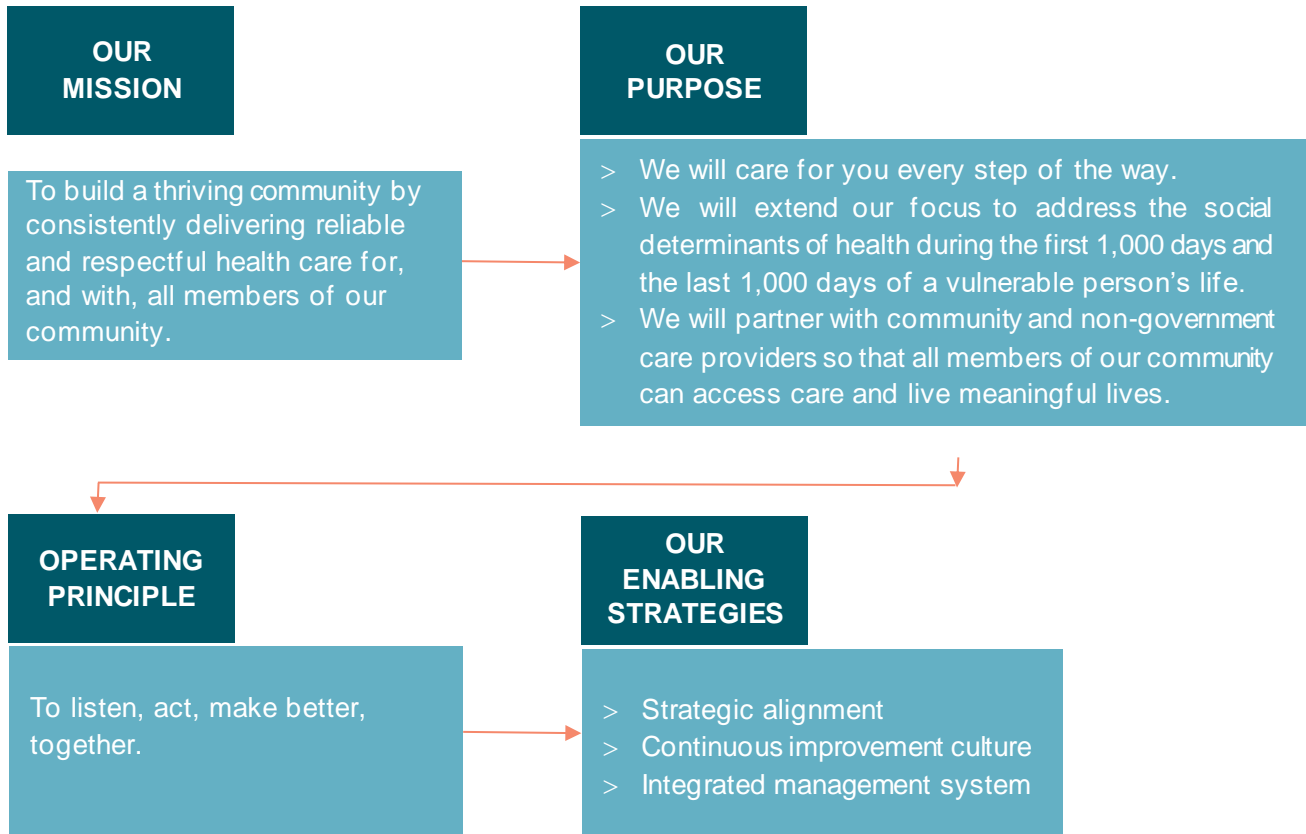
### Southern Adelaide Local Health Network (SALHN)

SALHN provides care for more than 350,000 people living in the southern metropolitan area of Adelaide as well as providing a number of statewide services, and services to those in regional areas. More than 7,500 skilled staff provide high quality patient care, education, research and health promoting services.

SALHN provides a range of acute and sub-acute health services for people of all ages.

SALHN includes

- > [Flinders Medical Centre](#)
- > [Noarlunga Hospital](#)
- > [GP Plus Health Care Centres and Super Clinics](#)
- > [Mental Health Services](#)
- > Sub-acute services, including [Repat Health Precinct](#)
- > [Jamie Larcombe Centre](#)
- > [Aboriginal Family Clinics](#)



### Code of Ethics

The Code of Ethics for the South Australian Public Sector provides an ethical framework for the public sector and applies to all public service employees; it sets out the **South Australian Public Sector Values** as:

- > **Service** – We proudly serve the community and Government of South Australia.
- > **Professionalism** – We strive for excellence.
- > **Trust** – We have confidence in the ability of others.
- > **Respect** – We value every individual.
- > **Collaboration & engagement** – We create solutions together.
- > **Honesty & integrity** – We act truthfully, consistently, and fairly.
- > **Courage & tenacity** – We never give up.
- > **Sustainability** – We work to get the best results for current and future generations of South Australians.

The Code recognises that some public sector employees are also bound by codes of conduct relevant to their profession.

### Domestic and Family Violence

The Southern Adelaide Local Health Network (SALHN) recognises the devastating impact domestic or family violence can have on the lives, of those who experience abuse and are committed to supporting employees who experience domestic or family violence by providing a workplace environment that provides flexibility and supports their safety.

**Role Acceptance**

I have read and understand the responsibilities associated with the role of **Enrolled Nurse (EN) in the Division of Rehabilitation, Aged Care and Palliative Care** and organisational context and the values of SA Health as described within this document.

---

Name

---

Signature

---

Date