

# ANU wants you

INFORMATION FOR  
PROSPECTIVE CANDIDATES

---

**Principal  
(Military and Defence Studies Program)  
Coral Bell School of Asia Pacific Affairs**

ANU COLLEGE OF  
**ASIA AND THE PACIFIC**



**Australian  
National  
University**



# Message from the Director, Coral Bell School of Asia Pacific Affairs



The Australian National University (ANU) is unique in Australia. Ranked in the world top 20 by QS, and based in our capital city, ANU is charting a new strategic course to redefine the role of a contemporary national university.

I welcome your interest in the position of Principal (Military and Defence Studies Program) in the Strategic and Defence Studies Centre (SDSC), within the Coral Bell School of Asia Pacific Affairs.

The Principal (MDSP) is an important position within the School, and leads our engagement with the Australian Defence College.

The ANU Coral Bell School of Asia Pacific Affairs (Bell School) is a world-leading centre for research, education, and policy analysis on international and Asia Pacific politics, security, diplomacy, and strategic affairs. The School is made up of five vibrant units: the Asia Pacific College of Diplomacy, the Department of International Relations, the Department of Pacific Affairs, the Department of Political and Social Change, and the Strategic and Defence Studies Centre.

SDSC has the largest concentration of scholars dedicated to the analysis of the use of armed force in its political context, and its researchers are renowned for their impact in teaching and research across military history, defence policy and operations, and Asia Pacific strategic developments. The Centre's staff contribute to policy making within and beyond Australia, regularly provide advice to government, and are called upon for media commentary.

The successful candidate will be a world-class senior academic, seeking a challenging and rewarding role with a focus on professional military education.

I strongly encourage your application.



**Professor Toni Erskine**

Director, Coral Bell School of Asia Pacific Affairs  
ANU College of Asia and the Pacific  
The Australian National University



INFORMATION FOR PROSPECTIVE CANDIDATES

# The University



# Australia's #1 university

The Australian National University is one of the world's foremost research universities. Distinguished by its relentless pursuit of excellence, the University attracts leading academics and outstanding students from Australia and around the world.

## History

The University was established by the Commonwealth Parliament in 1946 specifically to lead the development of the intellectual capacity of the nation through research and research training in line with the best international standards. It is the only Australian university established by a Commonwealth Act of Parliament. In 1960, the University accepted responsibility for undergraduate education along with an expectation that the highest standards of education would be achieved.

## Scale

The University has 4,094 staff, 12,827 undergraduates and 12,534 postgraduate students. Its annual revenue exceeds \$1.0 billion and consolidated assets are worth \$2.5 billion.

## Partnerships

The University has strong links with leading research institutions in Australia and overseas. It is a founding member of the International Alliance of Research Universities, a co-operative network of 10 eminent international research-intensive universities which includes:

- > University of Cambridge
- > University of Oxford
- > University of California, Berkeley
- > Yale University
- > Peking University
- > National University of Singapore
- > University of Tokyo
- > University of Copenhagen
- > ETH Zurich

## Research-intensive education

As the specially-chartered national university, the University conducts research at the highest levels in all of its colleges, and offers a unique research-led education to undergraduate and postgraduate students as well as postdoctoral fellows.

The University advances the national intellectual and creative capacity in three key ways:

1. Through broad-based research and research-intensive education in the disciplines fundamental to all knowledge: the humanities, the sciences and the social sciences,
2. By supporting research and research-intensive education in a spectrum of professional disciplines, and
3. By studying Australia in its various contexts.

It is the aim of the University to achieve its objectives by creating an inspirational working environment for all its staff, students and visitors.

In each of its endeavours, the University strives to achieve at the levels of the world's great universities.

## Location

The University campus has over 200 buildings and occupies 145 hectares adjacent to the city centre of Canberra. The University also has a number of smaller campuses:

- > Mount Stromlo Observatory (west of Canberra)
- > Siding Spring Observatory (near Coonabarabran, western New South Wales)
- > North Australia Research Unit (Darwin, Northern Territory)
- > Kioloa (coastal campus near Bawley Point, on the New South Wales South Coast)
- > ANU Medical School – The Canberra Hospital campus
- > ANU Medical School – Calvary Hospital
- > Health Facilities in South East New South Wales



Further information about ANU can be found at [anu.edu.au/about](http://anu.edu.au/about)

# University Colleges

ANU has seven academic colleges, each housing the schools and research centres that contribute to the various broad disciplines. The ANU Colleges link research and teaching at undergraduate, postgraduate and higher degree levels. They undertake world-class research and provide education programs at the highest standards.

The University recognises the need to strengthen strategic planning, align administrative support with these plans and ensure consistency of policy and procedure. The aim of the college structure is to promote and formalise cooperation among the different contributors to disciplines in ANU.



## ANU College of Arts & Social Sciences

The ANU College of Arts and Social Sciences (CASS) is the research and education college for the broad disciplines of the creative arts, humanities and the social sciences. The College has two research schools - the Research School of Social Sciences and the Research School of Humanities and the Arts – that cover the main disciplines to deliver leading research and degree programs.

> [cass.anu.edu.au](http://cass.anu.edu.au)

## ANU College of Asia & the Pacific

The ANU College of Asia and the Pacific (CAP) hosts the largest assembly of scholars dedicated to working on Asia and the Pacific in the English-speaking world. Organisationally the College comprises three large Schools - the School of Culture, History and Language (CHL); the Coral Bell School of Asia Pacific Affairs; and the Crawford School of Public Policy - and two Research Centres: the Regulatory Institutions Network (RegNet) and the Australian Centre on China in the World.

> [asiapacific.anu.edu.au](http://asiapacific.anu.edu.au)

## ANU College of Science

The College consists of the Research Schools of Physics and Engineering, Earth Sciences, Chemistry, Astronomy and Astrophysics, and Biology, plus the Fenner School of Environment and Society, the Mathematical Sciences Institute, and the Australian Centre for the Public Awareness of Science. Academic staff within the ANU College of Science undertake world leading research and deliver research-led education on issues of global importance, supported by extensive international networks and world class facilities.

> [cos.anu.edu.au](http://cos.anu.edu.au)

## ANU College of Business & Economics

The ANU College of Business and Economics (CBE) seeks to advance knowledge through high quality education and research in the closely related areas of accounting, actuarial studies, econometrics, economic history, economics, finance, statistics, international business, management, marketing, and business information systems. It endeavours to do this through the provision of a range of undergraduate and graduate programs, and through its research, publications and contributions to the associated professions, commerce, industry and government.

> [cbe.anu.edu.au](http://cbe.anu.edu.au)

## ANU College of Engineering & Computer Science

The ANU College of Engineering and Computer Science (CECS) comprises of the Research Schools of Engineering and Computer Science, and the 3Ai and Cyber Institutes. It offers undergraduate degrees in engineering, information technology and computer science along with masters and doctoral postgraduate programs. The College undertakes basic and applied research in information and communications technologies, materials and manufacturing, formal methods and logic, machine learning and vision, robotics and energy systems.

> [cecs.anu.edu.au](http://cecs.anu.edu.au)

## ANU College of Law

The ANU College of Law (CoL) is Australia's national law school, committed to legal research and education at the highest level, and to striving for continuous improvement in the law for the benefit of national and international communities. The ANU Law School offers LLB Hons and Juris Doctor (JD) degrees, a Graduate Diploma in Legal Practice through the School of Legal Practice, and postgraduate research and coursework degrees.

> [law.anu.edu.au](http://law.anu.edu.au)

## ANU College of Health & Medicine

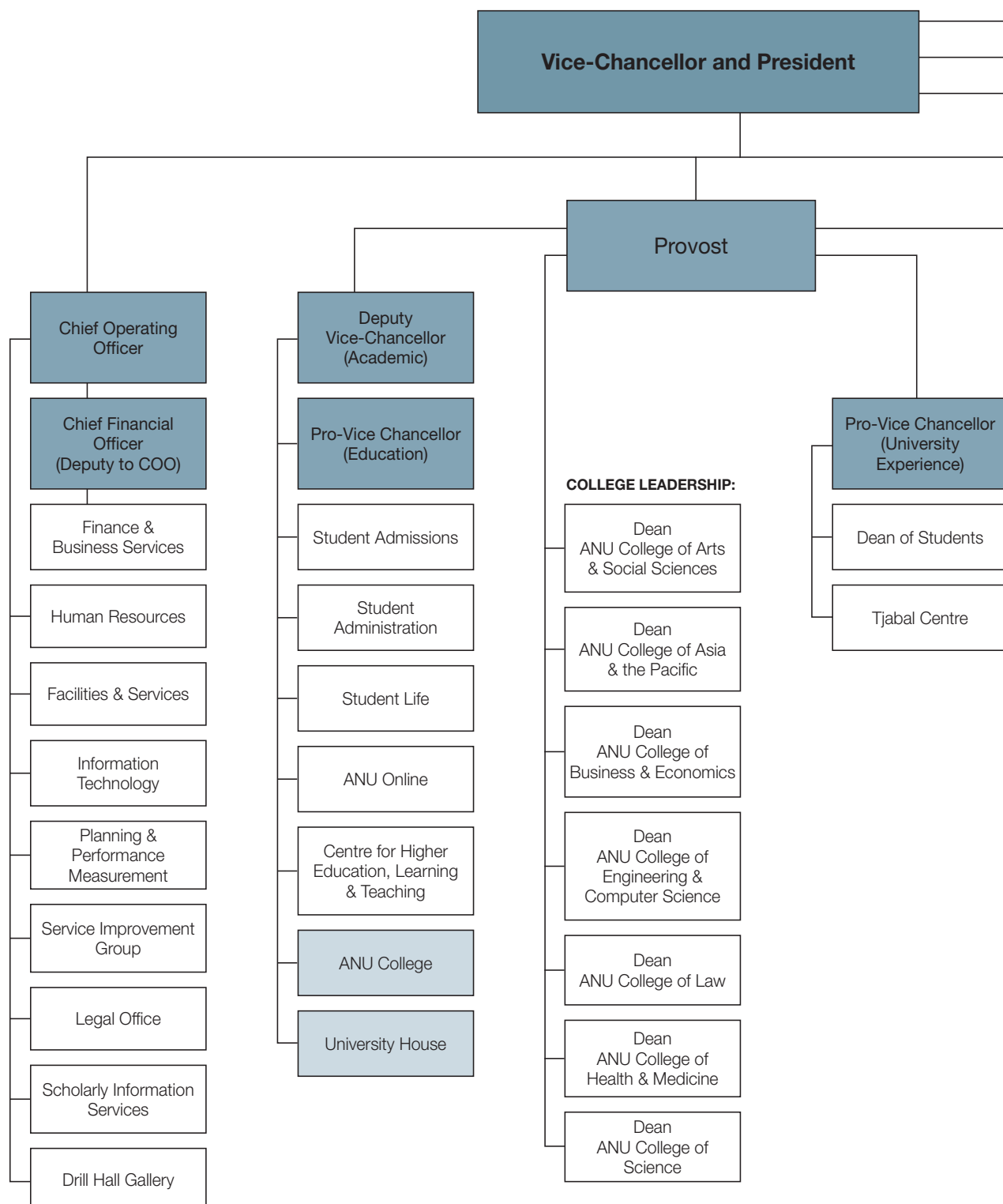
The ANU College of Health and Medicine comprises the ANU Medical School, the John Curtin School of Medical Research, the Research School of Psychology and the Research School of Population Health. These schools work together to deliver world-class research and education across the spectrum of medicine and health-related fields, working in partnership with the health sector at local, national and international levels.

> [chm.anu.edu.au](http://chm.anu.edu.au)



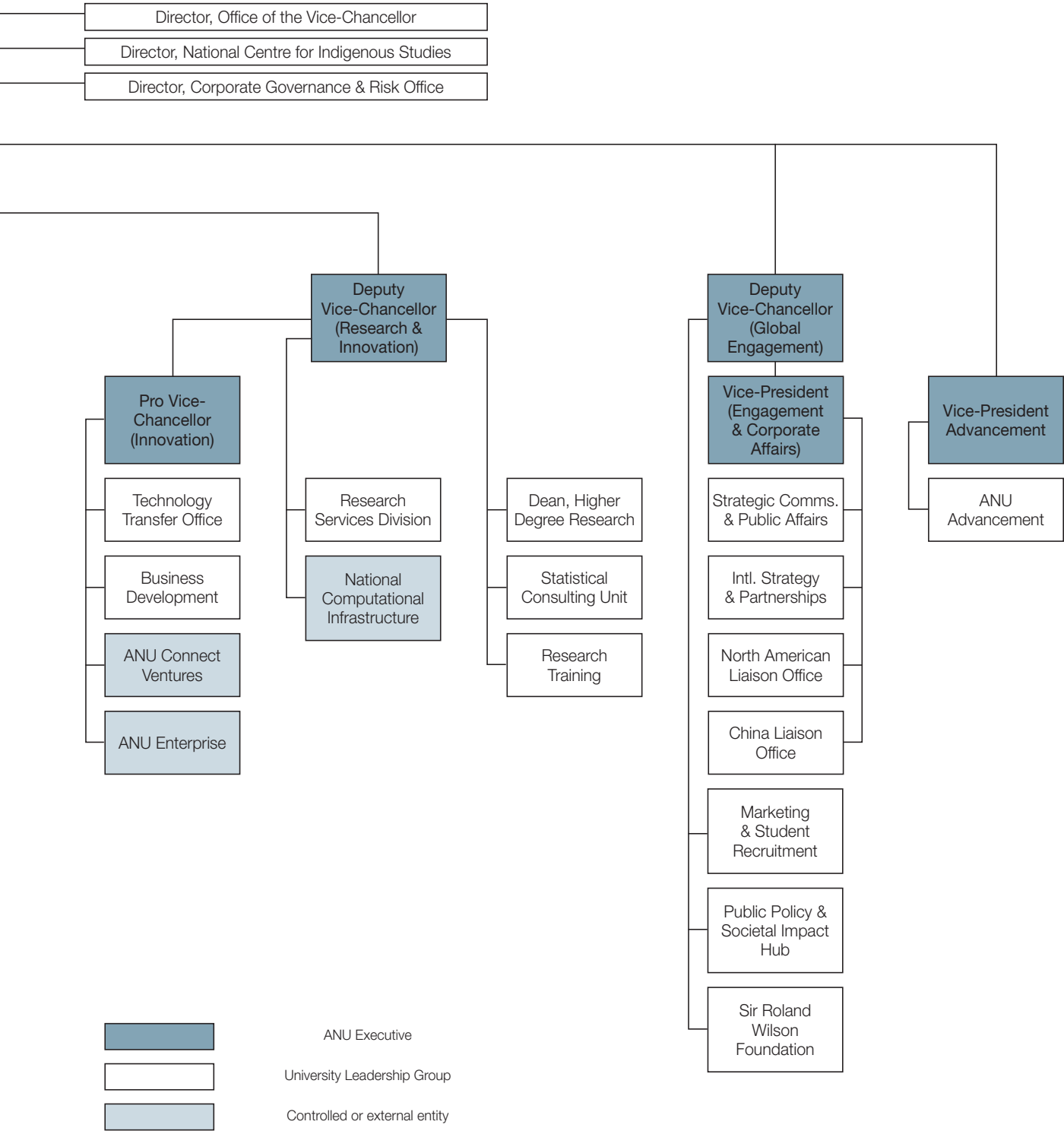
Further information can be found at  
[anu.edu.au/about/academic-colleges](http://anu.edu.au/about/academic-colleges)

# ANU Executive Structure





INFORMATION FOR PROSPECTIVE CANDIDATES





# Our Vision & Values



# Our Vision

- > Contemporary ANU will sit among the great universities of the world, and be defined by a culture of excellence in everything that we do.
- > We will be renowned for the excellence of our research, which will be international in scope and quality, always measured against the best in the world. Our research investment will be strategic, taking a long-term view and focus on high-quality activities, high-impact infrastructure and areas of high national importance.
- > We will be renowned for the excellence of our undergraduate and graduate education: excellence in student cohort, excellence in teaching, excellence in student experience, and excellence in outcomes.
- > We will be renowned for the quality of the contribution our research and education make to societal transformation. We will identify emerging areas of need for the nation and provide research and education that will equip Australia to cope with challenges not yet imagined.
- > ANU research, education and contributions to public policy-making will change Australia and change the world. It will have impact.

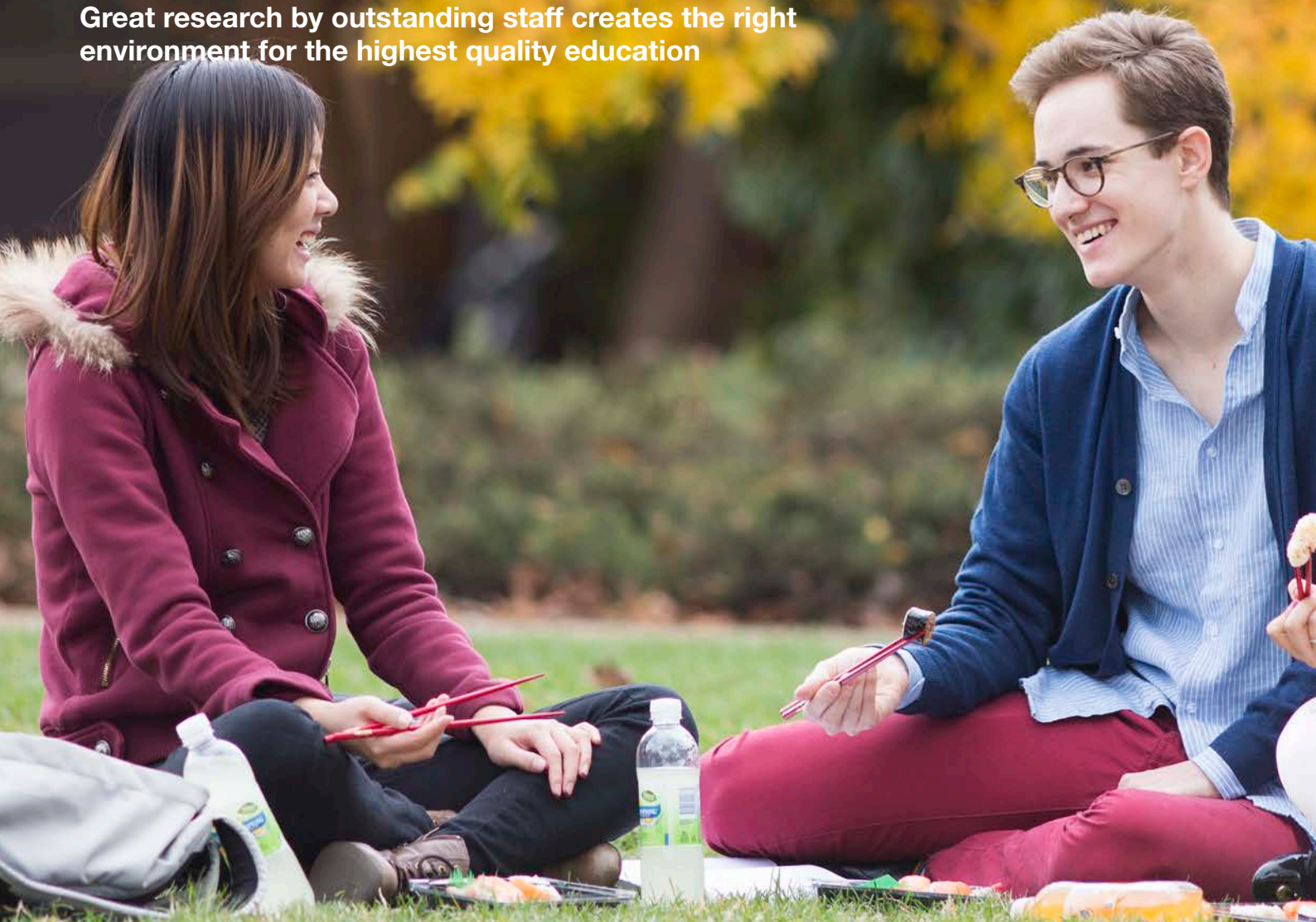
# Our Values

- > We bring a distinctive excellence to our work and have the confidence to pursue original ideas.
- > We are inclusive, open and respectful, reflecting the diversity of our nation.
- > We are committed to integrity and ethical behaviour.
- > We value, enable, reward and celebrate collegiality.
- > We embrace informed risk-taking in pursuit of our objectives.
- > We are committed to better outcomes for our community, the environment, our nation and the world.
- > We are committed to the service of our nation, through original thinking and through courage in advancing our ideas.



# Excellence in education & student experience

Great research by outstanding staff creates the right environment for the highest quality education





# Innovative teaching and learning

Our graduates will have a positive influence on the future. They are passionate, creative and capable of solving critical problems not yet imagined. They create and apply knowledge to improve the lives of people, the nation and the world.

In achieving the vision of a contemporary ANU, sitting among the great universities of the world, defined by a culture of excellence (ANU Strategic Plan 2017 – 2021), the University is committed to high quality learning and teaching.

This commitment acknowledges that students are the centre of learning and teaching at ANU. A partnership between students, academics, professional staff and the University forms the foundation for excellence in learning and teaching.

The Vision for Excellence in Learning and Teaching requires commitment and leadership across the University and at all levels. The University values, enables, rewards and celebrates excellence in learning and teaching.

Four key interdependent pillars – engaged students, inspirational academics, an enriching environment, a connected community – provide a frame of reference for aligning focus and effort to continuously improve the outcomes of learning and teaching at ANU.



# Our responsibility to Indigenous Australia

As Australia's national university one of our defining roles has been to contribute to the advancement of Australia's Indigenous peoples.

We contribute by graduating Indigenous students, as well as through game-changing research and direct engagement. Delivering on our Unique National Responsibilities with Indigenous communities. We provide an environment for debating the big issues and partnering with Indigenous Australia to advance the status, recognition and lives of Aboriginal and Torres Strait Islander peoples.

Although the proportion of Indigenous students at ANU is high by the standards of some of our peer universities, we remain far from parity with the population at large for undergraduates. The proportion of postgraduate and higher degree students is lower again, as is the proportion of

professional and academic staff. Through targeted activities we will work towards achieving parity with the proportion of Indigenous Australians in the overall population.

Research focused on Indigenous issues is broad in scope and has made a substantial contribution. ANU has strong Indigenous research leaders in a number of disciplines. However, our continued salience requires constant attention to impact, partnership with Indigenous communities and a commitment to novel and multidisciplinary approaches to our work.





# Achieving equity

ANU is committed to equity and diversity as fundamental values. Australia has a diverse population and we are committed to providing opportunities and an inclusive and welcoming environment, to those of all backgrounds and identities.

As Australia's National University, we have a responsibility and an obligation to educate students from across Australia who have the capacity to succeed, no matter their background. It is for this reason that we have launched a pioneering program to transform the way we do admissions. We are undertaking an international first to link our admission, scholarship, and accommodation processes so that when we make a student an offer to university, they will at the same time know where they will be living and whether they have a scholarship to support them. We are reserving a place for domestic students in the top 2% of every school in Australia who have the capacity to succeed, ensuring students have access to a world class education no matter the socio-economic status of their school.

Alongside this we are undertaking a major scholarship drive to remove the financial barrier for some of our most capable but most disadvantaged students, whether they be indigenous, suffering a long term disadvantage, low-SES, or from interstate regional and remote areas. We now have a single application form that allows both excelling and disadvantaged students to access more than 200 scholarship opportunities across campus by answering just four questions. And we are looking at the whole person, requiring all undergraduate applicants to have engaged beyond the classroom to support themselves, their family or their community, to clearly signal the importance of engagement beyond studies to both academic and employment success.

## Athena Swan

ANU has committed to the SAGE Pilot of Athena SWAN in Australia. Athena SWAN is an accreditation program that recognises, promotes and rewards excellence in advancing gender equity and diversity. ANU became an inaugural member of the SAGE Pilot project in 2016.

While the focus of the SAGE pilot is on Science, Technology, Engineering, Mathematics, and Medicine (STEMM) disciplines, ANU is also committed to gender equity in the Humanities and Social Science disciplines, as well as in our professional staff.



# Role Statement

## Academic Level D

Under the broad direction of the Head, Strategic and Defence Studies Centre, the Principal (MDSP) will:

- > Lead best-practice innovation in the development, implementation, delivery and continuous monitoring of ACSC's and SDSC's education programs.
- > Lead curriculum development and review for the MDSP, and ensure effective management of the contract with Defence.
- > Actively engage in the governance and collegial life of ACSC, SDSC and the School and develop strategic partnerships with external stakeholders. Liaise regularly with the Bell School Director, Head of SDSC and senior Defence personnel.
- > Make original and leading contributions to published research in an area relevant to the work of SDSC and the School and College more broadly.
- > Make strong contributions to public-policy debates on strategic and defence policy issues.
- > Actively seek and secure external funding including the preparation and leadership of major multi party collaborative research proposals.
- > Lead, supervise and develop less senior academic staff and research support staff in the School. Teach and supervise students at all levels.
- > Lead and initiate outreach activities including to prospective students, research institutes, industry, government, the media and the general public.
- > Maintain and actively promote high academic standards in all education, research and administrative endeavours and proactively contribute to all aspects of the operation of the School, College and the University more broadly.
- > Comply with all ANU policies and procedures, and in particular those relating to work health and safety and equal opportunity.
- > Undertake other duties as required, consistent with the classification of the position.

A Level D Academic will normally have advanced qualifications and/or recognised significant experience in the relevant discipline area. A position at this level will normally require a doctoral qualification or equivalent accreditation and standing.

In determining experience relative to qualifications, regard shall be had to teaching experience, experience in research, experience outside tertiary education, creative achievement, professional contributions and/or to technical achievement.

In addition there is a requirement for academic excellence that may be evidenced by an outstanding contribution to teaching and/or research and/or the profession.



# Selection Criteria

## Academic Level D

- 1.**  
A PhD in a relevant discipline with internationally recognised academic expertise in one or more of the following areas: defence and military history, Australian strategic and defence policy, Asia-Pacific strategic trends, global strategic developments, military operations, strategic theory, defence and strategic history.
- 2.**  
A strong publishing record that establishes the candidate as an internationally recognised scholar in his or her specialised research area.
- 3.**  
Strong experience in leadership and management roles including experience in developing and mentoring colleagues, especially in a defence or education setting.
- 4.**  
A track record of success in the supervision of graduate and PhD students from a wide range of cultural backgrounds, evidence of effective teaching at all levels and an understanding of the needs and challenges of professional military education.
- 5.**  
Demonstrated experience in attracting competitive external funding to support individual and collaborative research or outreach activities. A proven track record in developing and engaging in collaborative research projects.
- 6.**  
A strong record of effective engagement in public and policy debates in relevant areas of expertise.
- 7.**  
Excellent oral and written English language skills and a demonstrated ability to communicate and interact effectively with a variety of staff and students in a cross-disciplinary environment and to foster respectful and productive working relationships with staff, students and colleagues at all levels.
- 8.**  
A demonstrated understanding of equal opportunity principles and policies and a commitment to their application in a university context.

# Role Statement

## Academic Level E

Under the broad direction of the Head, Strategic and Defence Studies Centre, the Principal (MDSP) will:

- > Lead best-practice innovation in the development, implementation, delivery and continuous monitoring of ACSC's and SDSC's education programs.
- > Lead curriculum development and review for the MDSP, and ensure effective management of the contract with Defence.
- > Actively engage in the governance and collegial life of ACSC, SDSC and the School and develop strategic partnerships with external stakeholders. Liaise regularly with the Bell School Director, Head of SDSC and senior Defence personnel.
- > Make original and leading contributions to published research in an area relevant to the work of SDSC and the School and College more broadly.
- > Make leading contributions to public-policy debates on strategic and defence policy issues.
- > Actively seek and secure external funding including the preparation and leadership of major multi party collaborative research proposals.
- > Lead, supervise and develop less senior academic staff and research support staff in the School and College. Teach and supervise students at all levels.
- > Lead and initiate major community outreach activities including to prospective students, research institutes, industry, government, the media and the general public for the broader benefit of the University.
- > Maintain and actively promote high academic standards in all education, research and administrative endeavours and proactively contribute to all aspects of the operation of the School, College and the University more broadly.
- > Comply with all ANU policies and procedures, and in particular those relating to work health and safety and equal opportunity.
- > Undertake other duties as required, consistent with the classification of the position.

A Level E Academic will normally have advanced qualifications and/or recognised significant experience in the relevant discipline area. A position at this level will normally require a doctoral qualification or equivalent accreditation and standing.

In determining experience relative to qualifications, regard shall be had to teaching experience, experience in research, experience outside tertiary education, creative achievement, professional contributions and/or to technical achievement.

In addition there is a requirement for academic excellence that may be evidenced by an outstanding contribution to teaching and/or research and/or the profession. A Level E academic will be recognised as a leading authority in the relevant discipline area.



# Selection Criteria

## Academic Level E

- 1.**

A PhD in a relevant discipline with internationally recognised academic expertise in one or more of the following areas: defence and military history, Australian strategic and defence policy, Asia-Pacific strategic trends, global strategic developments, military operations, strategic theory, defence and strategic history.
- 2.**

An extensive publishing record that establishes the candidate as an internationally recognised scholar in his or her specialised research area.
- 3.**

An outstanding record in leadership and management roles including extensive experience in developing and mentoring colleagues, especially in a defence or education setting.
- 4.**

A proven record of substantial success in the supervision of graduate and PhD students from a wide range of cultural backgrounds, evidence of effective teaching at all levels and an understanding of the needs and challenges of professional military education.
- 5.**

Demonstrated experience in attracting competitive external funding to support individual and collaborative research or outreach activities. A proven track record in developing and engaging in collaborative research projects.
- 6.**

Proven record of effective engagement in public and policy debates in relevant areas of expertise.
- 7.**

Excellent oral and written English language skills and a demonstrated ability to communicate and interact effectively with a variety of staff and students in a cross-disciplinary environment and to foster respectful and productive working relationships with staff, students and colleagues at all levels.
- 8.**

A demonstrated understanding of equal opportunity principles and policies and a commitment to their application in a university context.

# ANU College of Asia and the Pacific

The ANU College of Asia & the Pacific hosts the largest group of scholars dedicated to working on Asia & the Pacific in the English-speaking world.



## INFORMATION FOR PROSPECTIVE CANDIDATES

We are delighted to introduce you to the ANU College of Asia & the Pacific, one of the world's leading centres for teaching, research and outreach on the region.

Since the founding of The Australian National University in 1946, the College has driven Australia's engagement and understanding of its neighbourhood. The work conducted here has established the University as a global centre of excellence in research, teaching and influence on Asia and the Pacific.

The College has its roots in the University's Research School of Pacific Studies and the School of Oriental Languages, established in 1946 and 1952 respectively. The Research School of Pacific Studies was a founding institution of ANU, formed to drive Australia's engagement with and understanding of its neighbourhood. The School of Oriental Languages was established to train diplomats and public servants in Chinese, and later Japanese, Bahasa Indonesia and Malay. Ten years later, the School became the ground-breaking Faculty of Asian Studies, the first and only faculty at an Australian university dedicated to a regional specialisation. In 2010, the Research School of Pacific and Asian Studies and the Faculty of Asian Studies merged to form the College of Asia & the Pacific.

Throughout its history, the College has prided itself on its teaching expertise and academic excellence. Notable current and former staff members include:

- > **Hedley Bull** - key international relations scholar
- > **Hugh White** - Australia's leading strategic and defence analyst

- > **Sir John Crawford** - pioneer in Asia-Pacific economics and public policy
- > **A.L. Basham** - author of *The Wonder That Was India*, which remains the most widely used introductory text on Indian civilisation
- > **Stephen Wurm** - the world's foremost expert on the languages of New Guinea
- > **Hilary Charlesworth** - world-renowned expert on international law and human rights
- > **Nicholas Evans** - leading expert on endangered languages

Today, the College hosts the largest number of regional experts and specialist academic programs in the English-speaking world, and plays a vital role in informing public policy and Australia's intellectual engagement with the societies, cultures and economies of Asia and the Pacific. The ANU Library also holds one of the best Asian collections in the world. Although the College remains unique for its regional focus, it also has an unwavering commitment to disciplinary strength, particularly in political science, economics, history, anthropology, law, archaeology and linguistics, with an enviable international standing across all these disciplines.

With the College's focus on Asia and the Pacific more relevant now than ever, ANU is indisputably the best place to prepare the next generation of regional specialists for the challenges of the Asian century.





# Coral Bell School of Asia Pacific Affairs

The Coral Bell School is a world-leading centre for research, education and outreach in the international, political, societal, diplomatic and strategic affairs of Asia and the Pacific



## INFORMATION FOR PROSPECTIVE CANDIDATES

Named in honour of internationally renowned scholar Dr Coral Bell AO, the Coral Bell School of Asia Pacific Affairs is situated at the creative cusp between discipline and area studies and is home to the world's foremost collection of expertise in the politics and international affairs of Asia and the Pacific.

The School comprises a number of vibrant, interdisciplinary, intellectual communities:

- > Department of International Relations (DIR), a world leader in the study of international and global politics and the first department of its kind in Australia.
- > Strategic and Defence Studies Centre (SDSC), Australia's leading university-based think tank.
- > Asia Pacific College of Diplomacy (APCD), the only centre in the southern hemisphere dedicated to research and education on transnational diplomacy.
- > Department of Political and Social Change (PSC) houses the highest concentration of experts specialising in Indonesian politics outside of Indonesia itself.
- > Department of Pacific Affairs (DPA), renamed from State, Society and Governance in Melanesia Program, proudly hosts the largest collection of Pacific expertise in the world.
- > The Coral Bell School is home to the world's foremost collection of expertise on international and Asia Pacific politics, security and diplomacy and is a key contributor to national policymaking. The Coral Bell School of Asia Pacific Affairs is proud to continue the time-honoured traditions of ANU, keeping teaching expertise and academic excellence as cornerstones of its endeavours.

### Research

As with the ANU College of Asia & the Pacific in which it sits, the Coral Bell School of Asia Pacific Affairs has a long history that helps drive Australia's engagement and understanding of its neighbourhood, as well as establish the University as a global center of excellence in research and influence on Asia and the Pacific.

### Education

The School is committed to providing the world's best graduate, undergraduate, and professional education on Asian and Pacific politics, international relations, strategic studies, and diplomacy.



INFORMATION FOR PROSPECTIVE CANDIDATES

# Strategic and Defence Studies Centre

52 years on and the Strategic & Defence Studies Centre (SDSC) continues to play an integral role in shaping Australian strategic and defence policy and is deeply engaged with the changing geopolitical environment of the Asia-Pacific region



## INFORMATION FOR PROSPECTIVE CANDIDATES

The SDSC was founded in 1966 and is Australia's leading university-based think tank, which boasts the largest concentration of scholars dedicated to the analysis of the use of armed force in its political context.

Today SDSC has over 22 academic staff conducting innovative, timely and relevant research. Some of our noteworthy academics and scholars include prolific historians such as Emeritus Professors David Horner and Joan Beaumont who are both Prime Minister's Literary Award recipients; Professor Evelyn Goh, the Department of Defence's Shedden Professor of Strategic Policy Studies; Dr Amy King, recipient of one of four 2017 Westpac Research Fellowships an awardee of Australian Research Council funding and Discovery Early Career Researcher Award; Professor John Blaxland, author of the 'Official History of ASIO' volumes and Director of the ANU Southeast Asia Institute; Emeritus Professor Hugh White, author of *The China Choice*; Emeritus Professor Paul Dibb, author of the seminal 1987 Defence White Paper; the late Desmond Ball, who has been dubbed the Insurgent Intellectual for his ground-breaking research on nuclear-disarmament, Australian intelligence arrangements and Southeast Asian security; and Honorary Professor Brendan Sargeant, Former Associate Secretary of Defence.

The SDSC actively collaborates with external stakeholders in both industry and government - this includes with the Australian Centre for the Study of Armed Conflict and Society (ACSACS), the Australian Institute of International Affairs (AIIA), the Australian Command and Staff College, the Australian Security Intelligence Organisation (ASIO), the Australian Strategic Policy Institute (ASPI), the Department of Defence, the Department of Foreign Affairs and Trade (DFAT), the Institute for Regional Security (IFRS), the International Institute for Strategic Studies (IISS), the Lowy Institute for International Policy, the Australian War Memorial, Military History and Heritage Victoria (MHHV), the United States Studies Centre, and the US Department of Defense.

Award-winning teachers contribute their research and expertise to prepare and educate the next generation of strategic leaders and thinkers – military, civilian and academic – in Australia and the Asia-Pacific region, by providing world-class graduate and undergraduate programs in Strategic and Defence Studies that include:

- > **Military Studies:** The Centre boasts a team of academics who specialise in military operations; operational military and war history; military culture; and intelligence studies.
- > **Australian defence:** The Centre's research has been at the forefront of Australia's defence policy debate and development, and is particularly renowned for the work done on the conceptual foundations of Australian strategic policy.
- > **Asia-Pacific Security:** The Centre's expertise in Asia-Pacific security spans the vital strategic relations between the US, China, and Japan; flashpoints such as the Korean peninsula and the East and South China Seas; global strategic problems like nuclear proliferation and maritime security; transnational security challenges and cooperation; and the nexus between economic and security issues.

The SDSC offers an undergraduate program, Bachelor of International Security Studies (BINSS) and two Masters Programs, Master of Strategic Studies and the Master of Strategic Studies (Advanced) at the Coral Bell School of Asia Pacific Affairs, Australian National University. In addition they also teach the Military and Defence Studies Program at Australian Command and Staff College offered to military and selected government officers

The SDSC attracts over 700 students from domestic and international markets like US, South-East Asia and the Pacific and takes pride in its small-size classrooms. Noteworthy alumni include Greg Moriarty, Secretary at the Department of Defence; Esther Sainsbury, Diplomat with the Department of Foreign Affairs and Trade, Australian Embassy Yangon Myanmar; Dr Kalman Robertson, postdoctoral fellow at Harvard University.



**Professor John Blaxland**  
Department Head



**Dr Amy King**  
Senior Lecturer



**Dr Andrew Carr**  
Postgraduate Program  
Convenor, Senior Lecturer



**Professor Evelyn Goh**  
Director of Research, Shedden  
Professor of Strategic  
Policy Studies



**Dr Iain Henry**  
Undergraduate Program  
Convenor, Lecturer



**Dr Jean Bou**  
Senior Lecturer



**Dr Nina Silove**  
Lecturer



**Emeritus Professor**  
**Hugh White AO**



**Dr Garth Pratten**  
Senior Lecturer



**Emeritus Professor**  
**Joan Beaumont**

# ANU Snapshot

## #1

### AUSTRALIAN UNIVERSITY

The Australian National University is ranked first in Australia and 24 in the world.<sup>1</sup>

## 36%

### INTERNATIONAL

36% of the students are international

## 50%

### POSTGRADUATE

Half of the students are postgraduate (coursework and research)

## 50/50

### MALE/FEMALE

The student population has equal gender representation.

## 84%

### STAFF HAVE A DOCTORATE

84% of the teaching and research staff have a doctorate.

## 73%

### STUDY HASS

73% of students are studying the Humanities and Social Science disciplines.





# #1

## EMPLOYABILITY

Ranked top in Australia for producing the most employable graduates<sup>2</sup>

# 25,000

## STUDENTS

25,000 students enrolled at ANU<sup>4</sup>

# 6

## NOBEL LAUREATES

Six Nobel Laureates among our staff and alumni

# 108,043

## ALUMNI

Total number of alumni<sup>3</sup>

# 1

## APPLICATION

One application for admissions, scholarships and accommodation for domestic undergraduate school leavers

# 6,000

## ON-CAMPUS BEDS

The University offers over 6,000 on-campus beds to students from 2019

(1) QS World University Rankings 2017/18; 2018/19 Quacquarelli Symonds (QS) World University Rankings  
(2) The Global Employability Ranking 2017 (3) As at 31 December 2017 (4) As at 31 December 2017



# One of the world's most liveable cities



# The power of surprise

Canberra has the power to surprise, with its abundance of food, wine, art, culture, ideas and innovation. As an evolving city, this element of surprise continues even once you've made Canberra your home, with new developments, events and opportunities constantly emerging to keep life interesting.

## About Canberra

Canberra is also a planned city – designed to maximise opportunities for work and play. As our Nation's Capital, big ideas emerge, circulate and grow here, thanks to unique links between leading thinkers in business, government, education and research. Our dynamic economy, highly educated workforce and an innovative business culture provide career and business opportunities unique to Canberra.

Our healthy appetite for outdoor pursuits is enhanced by the natural resources available: from sailing on Lake Burley Griffin, mountain biking at the world class Mount Stromlo facility or heading up to the Snowy Mountains for a day on the slopes. We are also home to most of Australia's major national cultural institutions, with whom the University has a close relationship, and a cultural calendar overflowing with international exhibitions, arts festivals and entertainment.

## Where to Live

The architects who designed Canberra, Walter and Marion Burley Griffin, had a master plan to create a series of 'satellite cities' separated by nature reserves and connected with major roads. Today their vision lives on, with Canberra divided into seven distinct regions of residential suburbs, each serviced by a central business district.

The resulting benefits are that commuting times are short. Employment hubs are virtually on your doorstep and recreational facilities are within walking distance, regardless of where you live.

Find information on each district and the suburbs contained within them through the ['Explore Canberra' map](#).

## Education and Childcare

Canberra nurtures the pursuit of dreams from the ground up. Here families are provided with the supportive services, facilities and environments to raise happy, inspired and resilient children. Community is crucial for the support of families and Canberra has a number of ways to connect families with each other through playgroups, family events and activities.

Find out more about Canberra's excellent childcare, preschool and school system [here](#).

**Canberra has the lowest commuting times of all Australia's major cities**

**More than 25% of Canberra residents were born overseas**

**The region is known for four distinct seasons, enjoying 246 days of clear, crisp sunshine**



Further information about Canberra visit [canberra.com.au](http://canberra.com.au)

# How to apply

For a confidential discussion about the role, please contact Professor Toni Erskine, Director of the Coral Bell School of Asia Pacific Affairs.

---

In order to apply for this role please make sure that you upload the following documents:

1. A statement addressing the selection criteria (please note that there are distinct role statements and separate selection criteria for each level).
2. A current curriculum vitae (CV) which includes the names and contact details of at least three referees (preferably including a current or previous supervisor). If your CV does not include referees you can complete these online when prompted in the application form.
3. Other documents, if required.

---

**For a confidential discussion regarding this role and the application process, please contact:**

Professor Toni Erskine  
Director, Coral Bell School of Asia Pacific Affairs

E [toni.erskine@anu.edu.au](mailto:toni.erskine@anu.edu.au)  
T +61 2 6125 9921

**Anticipated timeframe for the appointment process.**

Applications close:  
Sunday, 17 February 2019  
Shortlisting of candidates:  
By end of February 2019  
Interviews:  
March 2019

ANU reserves the right to appoint by invitation.

On behalf of the University and as part of the application and appointment process, candidates may be requested to provide proof of their identity and citizenship and give permission for verification of their tertiary qualifications and a police background check.