



ROLE DESCRIPTION

Role Title:	Registered Nurse
Classification Code:	Registered Nurse Level 1
LHN/ HN/ SAAS/ DHA:	Women's and Children's Health Network (WCHN)
Hospital/ Service/ Cluster	Acute & Community Services
Division:	Child & Family Health Service (CaFHS)
Department/Section / Unit/ Ward:	
Role reports to:	Operationally to Regional Team Manager (RN4/AHP4) Professionally to respective Regional Team Manager (RN4)
Role Created/ Reviewed Date:	Reviewed January 2024
Criminal History Clearance Requirements:	Working with Children Check (issued by DHS) National Police Check (issued by approved provider)
Immunisation Risk Category:	<input checked="" type="checkbox"/> Category A (direct contact with blood or body substances) <input type="checkbox"/> Category B (indirect contact with blood or body substances)

ROLE CONTEXT

Primary Objective(s) of role:
Employees classified at this level provide nursing services in Child and Family Health Service (CaFHS). Employees working within this level develop from novice practitioners to a proficient level of professional practice. They consolidate knowledge and skills and develop in capability through continuous professional development and experience. An employee at this level accepts accountability for his or her own standards of nursing care and for activities delegated to others.
Direct Reports:
> Nil
Key Relationships/ Interactions:
<u>Internal</u>
> Supports and works collaboratively with less experienced members of the nursing team. > Maintains cooperative and productive working relationships with all members of the health care team.
<u>External</u>
> Maintains relationships with non-government organisations and other government organisations.
Challenges associated with Role:
Major challenges currently associated with the role include:
> Providing evidenced based care, developing clinical skills while keeping up to date with professional standards of practice and quality management initiatives consistent with organisational policies. > Dealing appropriately and relevantly with children, women and their families where there are multiple complexities, diverse cultural backgrounds and expectations of clients. > Recognising and responding to clinical escalation or other incidents and handling appropriately.

Delegations:
As per WCHN Delegations
Resilience:
SA Health employees persevere to achieve goals, stay calm under pressure and are open to feedback.
Performance Development
The incumbent will be required to participate in the organisation's Performance Review & Development Program which will include a regular review of the incumbent's performance against the responsibilities and key result areas associated with their position and a requirement to demonstrate appropriate behaviours which reflect a commitment to SA Health values and strategic directions.
General Requirements:
<p>*NB References to legislation, policies and procedures includes any superseding versions</p> <p>Managers and staff are required to work in accordance with the Code of Ethics for South Australian Public Sector, Policies and Procedures and legislative requirements including but not limited to:</p> <ul style="list-style-type: none"> > <i>Work Health and Safety Act 2012 (SA)</i> and when relevant WHS Defined Officers must meet due diligence requirements. > <i>Return to Work Act 2014 (SA)</i>, facilitating the recovery, maintenance or early return to work of employees with work related injury / illness. > Equal Employment Opportunities (including prevention of bullying, harassment and intimidation). > <i>Children and Young People (Safety) Act 2017 (SA)</i> 'Notification of Abuse or Neglect'. > Disability Discrimination. > <i>Independent Commissioner Against Corruption Act 2012 (SA)</i> > <i>SA Information Privacy Principles</i> > Relevant Awards, Enterprise Agreements, <i>Public Sector Act 2009 (SA)</i>, <i>Health Care Act 2008 (SA)</i>, and the SA Health (Health Care Act) Human Resources Manual. > Relevant Australian Standards. > Duty to maintain confidentiality. > Smoke Free Workplace. > To value and respect the needs and contributions of SA Health Aboriginal staff and clients, and commit to the development of Aboriginal cultural competence across all SA Health practice and service delivery. > Applying the principles of the South Australian Government's Risk Management Policy to work as appropriate. > <i>Health Practitioner Regulation National Law (South Australia) Act 2010</i> > <i>Mental Health Act 2009 (SA)</i> and Regulations > <i>Controlled Substances Act 1984 (SA)</i> and Regulations > The Nursing and Midwifery Board of Australia Registration Standards (including the Guidelines and Assessment Frameworks for Registration Standards) > The Nursing and Midwifery Board of Australia Professional Practice Codes and Guidelines (including Competency Standards, Codes of Ethics and Professional Conduct, Decision Making Framework and Professional Boundaries) > Professional Practice Standards and competencies consistent with area of practice as varied from time to time > SA Health/WCHN/LHN/SAAS policies, procedures and standards. > WCHN Clinical Governance and Consumer Engagement Framework and all requirements of the National Safety & Quality Health Service Standards (2nd Edition). > Applying the principles of the South Australian Government's Risk Management Policy to work as appropriate. > Accountable for contribution to the safety and quality of care delivered to WCHN consumers (refer to Accountability Statement below). <p>The SA Health workforce contributes to the safety and quality of patient care by adhering to the South Australian Charter of Health Care Rights, understanding the intent of the National Safety and Quality Health Service Standards and participating in quality improvement activities as necessary</p>

Handling of Official Information:

By virtue of their duties, SA Health employees frequently access, otherwise deal with, and/or are aware of, information that needs to be treated as confidential.

SA Health employees will not access or attempt to access official information, including confidential patient information other than in connection with the performance by them of their duties and/or as authorised.

SA Health employees will not misuse information gained in their official capacity.

SA Health employees will maintain the integrity and security of official or confidential information for which they are responsible. Employees will also ensure that the privacy of individuals is maintained and will only release or disclose information in accordance with relevant legislation, industrial instruments, policy, or lawful and reasonable direction.

Zero Tolerance to Racism:

The Women's and Children's Health Network has zero tolerance to racism. The Network is committed to ensuring its staff, volunteers, consumers and visitors are able to work or access health services in an environment that is culturally safe and free from any form of racism or discrimination.

Our staff are supported to address any form of racism in all environments, in line with our Corporate Procedure: ***Zero Tolerance to Racism – Identifying, Responding, and Managing in the Workplace.***

White Ribbon:

SA Health has a position of zero tolerance towards men's violence against women in the workplace and the broader community. In accordance with this, the incumbent must at all times act in a manner that is non-threatening, courteous, and respectful and will comply with any instructions, policies, procedures or guidelines issued by SA Health regarding acceptable workplace behaviour.

Special Conditions:

- > It is mandatory that no person, whether or not already working in SA Health, may be appointed to a position in SA Health unless they have provided a satisfactory current Criminal and Relevant History Screening, as required by the SA Health Criminal and Relevant History Screening Policy Directive.
- > For appointment in a Prescribed Position under the Child Safety (Prohibited Persons) Act (2016), a current Working with Children Check (WWCC) is required from the Department for Human Services Screening Unit. For other positions, a satisfactory National Police Certificate (NPC) assessment is required.
- > For 'Prescribed Positions' under the Child Safety (Prohibited Persons) Act (2016), the individual's WWCCs must be renewed every 5 years from the date of issue.
- > Appointment is subject to immunisation risk category requirements (see page 1). There may be ongoing immunisation requirements that must be met.
- > As a state-wide service, WCHN employees may be required to undertake work at various locations in metropolitan Adelaide, and provide outreach to other parts of South Australia (the latter in consultation with the incumbent of the role).
- > Depending on work requirements the incumbent may be transferred to other locations across SA Health to perform work appropriate to classification, skills and capabilities either on a permanent or temporary basis subject to relevant provisions of the Public Sector Act 2009 for Public Sector employees or the SA Health (Health Care Act) Human Resources Manual for Health Care Act employees.
- > The incumbent may be required to participate in Counter Disaster activities including attendance, as required, at training programs and exercises to develop the necessary skills required to participate in responses in the event of a disaster and/or major incident.
- > Dependent on having current drivers licence and willingness to drive.
- > This Role Description provides an indication of the type of duties you will be engaged to perform. You may be lawfully directed to perform any duties that a person with your skills and abilities would reasonably be expected to perform.

Key Result Area and Responsibilities

Key Result Areas	Major Responsibilities
Direct client care:	<ul style="list-style-type: none"> > Assess individual client needs, plan, implement and/or coordinate appropriate service delivery from a range of accepted options including other disciplines or agencies. > Provide direct person centred nursing care to clients in a defined team with increasing autonomy over time. > Plan and coordinate services with other disciplines or agencies in providing individual health care needs.
Support of health service systems:	<ul style="list-style-type: none"> > Participate in quality improvement activities that contribute to client safety, risk minimisation and safe work activities within the practice setting. > Provide team leader as required on a day to day basis. > Contribute to procedures for effectively dealing with people exhibiting challenging behaviours.
Education:	<ul style="list-style-type: none"> > Provide health promotion and education, to clients or groups to improve the health outcomes of individual. > Support nursing practice and learning experiences for students undertaking clinical placements, orientation and preceptorship for new staff.
Research:	<ul style="list-style-type: none"> > Participate in evaluative research activities within the practice setting. > Use foundation theoretical knowledge and evidenced based guidelines to achieve positive client care outcomes.
Professional leadership:	<ul style="list-style-type: none"> > Provide, with increasing capacity over time, support and guidance to newer or less experienced staff, including Enrolled Nurses.

Knowledge, Skills and Experience

ESSENTIAL MINIMUM REQUIREMENTS

Educational/Vocational Qualifications

- > Registered or eligible for registration as a Nurse with the Nursing and Midwifery Board of Australia and who holds, or who is eligible to hold, a current practicing certificate; or
- > Registered or eligible for registration as a Nurse and Midwife by the Nursing and Midwifery Board of Australia and who holds, or who is eligible to hold, a current practicing certificate.

Personal Abilities/Aptitudes/Skills:

- > Effective communication skills including, problem solving, conflict resolution and negotiation skills.
- > Ability to work effectively within a multidisciplinary team.
- > Ability to prioritise workload.
- > Ability to be, creative, innovative and flexible when approaching issues within a healthcare setting.
- > Demonstrated commitment to providing client and family centred care.

Experience

- > Demonstrated competence in the relevant area of nursing practice in accordance with the appropriate standards of practice.

Knowledge

- > Knowledge and understanding of the role of the Registered General Nurse/Midwife within a healthcare setting.
- > Knowledge and understanding of relevant legislation, industrial agreements, standards, codes, ethics and competency standards.
- > Knowledge of Quality Improvement Systems as applied to a healthcare setting.

DESIRABLE CHARACTERISTICS

Educational/Vocational Qualifications

- > Qualifications relevant to speciality area.

Personal Abilities/Aptitudes/Skills:

- > Ability to use technology and computer skills.

Experience

- > Experience in quality improvement activities eg the development and/or implementation of clinical standards, practice guidelines, protocols/audits and quality indicators.

Knowledge

- > Knowledge of contemporary professional nursing/midwifery issues.
- > Knowledge of the South Australian Public Health System.

Organisational Context

Organisational Overview:

Our mission at SA Health is to lead and deliver a comprehensive and sustainable health system that aims to ensure healthier, longer and better lives for all South Australians. We will achieve our objectives by strengthening primary health care, enhancing hospital care, reforming mental health care and improving the health of Aboriginal people.

SA Health is committed to a health system that produces positive health outcomes by focusing on health promotion, illness prevention and early intervention. We will work with other government agencies and the community to address the environmental, socioeconomic, biological and behavioural determinants of health, and to achieve equitable health outcomes for all South Australians

Our Legal Entities:

SA Health is the brand name for the health portfolio of services and agencies responsible to the Minister for Health and Wellbeing.

The legal entities include but are not limited to Department for Health and Wellbeing, Central Adelaide Local Health Network, Northern Adelaide Local Health Network, Southern Adelaide Local Health Network, Women's and Children's Health Network, Country Health SA Local Health Network and SA Ambulance Service.

SA Health Challenges:

The health system is facing the challenges of an ageing population, increased incidence of chronic disease, workforce shortages, and ageing infrastructure. The SA Health Care Plan has been developed to meet these challenges and ensure South Australian's have access to the best available health care in hospitals, health care centres and through GPs and other providers.

Health Network/ Division/ Department

The Women's and Children's Health Network (WCHN) was established to promote, maintain and restore the health of women, children and young people in South Australia. The Service plans, develops and coordinates health services as part of an integrated health system.

The Women's and Children's Health Network efficiently conducts and manages, within its identified resources, health services for children, young people and women, including:

- Specialist hospital services.
- Primary health care and population health programs.
- Integrated community care services.
- Services to address the health and wellbeing of particular populations, including Aboriginal Health Programs.
- Education and training programs.
- Research.

Child and Family Health Service (CaFHS):

The Child and Family Health Service (CaFHS) is a Division of the Acute and Community Services Directorate of the Women's and Children's Health Network. CaFHS is a critical part of South Australia's child development system with a mandate to improve health, development and wellbeing outcomes for children from birth to five years of age, and to respond to the 20,000 births each year which includes an estimated 900 births to Aboriginal families.

Values

SA Health Values

The values of SA Health are used to indicate the type of conduct required by our employees and the conduct that our customers can expect from our health service:

- > We are committed to the values of integrity, respect and accountability.
- > We value care, excellence, innovation, creativity, leadership and equity in health care provision and health outcomes.
- > We demonstrate our values in our interactions with others in SA Health, the community, and those for whom we care.

Domestic and Family Violence

The WCHN recognises violence against women as a human rights issue that must be addressed in the workplace, and is committed to a zero tolerance policy towards violence against women in the workplace. Accordingly employees must appropriately report and respond to any such acts in the workplace, and make available appropriate support to employees who may be experiencing violence in the community

Code of Ethics

The *Code of Ethics for the South Australian Public Sector* provides an ethical framework for the public sector and applies to all public service employees:

- > Democratic Values - Helping the government, under the law to serve the people of South Australia.
- > Service, Respect and Courtesy - Serving the people of South Australia.
- > Honesty and Integrity- Acting at all times in such a way as to uphold the public trust.
- > Accountability- Holding ourselves accountable for everything we do.
- > Professional Conduct Standards- Exhibiting the highest standards of professional conduct.

The Code recognises that some public sector employees are also bound by codes of conduct relevant to their profession.

Approvals

Role Description Approval

I acknowledge that the role I currently occupy has the delegated authority to authorise this document.

Name:

Role Title:

Signature:

Date:

Role Acceptance

Incumbent Acceptance

I have read and understand the responsibilities associated with role, the role and organisational context and the values of SA Health as described within this document.

Name:

Signature:

Date:

Accountability – what does it mean for me?

Within WCHN everyone is accountable for their contribution to the safety and quality of care delivered to consumers.

Consumers

Consumers and their families participate as partners to the extent that they choose. These partnerships can be in their own care, and in organisational design and governance.

Staff including Contractors, Locums, Agency, Students and Volunteers

All staff (as described above) have a role in the delivery of safe, high quality care to consumers, and are expected to perform their roles with diligence; and with a person-centred approach to the best of their ability. It is the responsibility of all staff to raise concerns when it is recognised that something is not right. Safety and quality is the responsibility of all staff, at all levels and across all locations.

Clinicians

All clinicians are accountable for the provision of competent, consistent, timely, safe, reliable, contemporary and person centred care within a defined scope of practice.

Clinicians work in teams with professionals from a variety of disciplines based on mutual respect and clear communication, with an understanding of responsibilities, capabilities, constraints and each other's scope of practice.

All clinicians are responsible for providing care that is person centred, evidence based and which focuses on safety through minimising risk while achieving optimal outcomes for consumers. This is helped by participating in clinical governance, in WCHN health and safety forums, fostering a learning environment and supporting other clinicians to provide high quality services which are safe.

Clinicians are expected to speak up when there are concerns about safety so that these can be rectified and learnt from. Clinicians are accountable for their own individual professional practice, including maintaining currency of credentialing, registration and professional practice.

Managers

Managers are accountable for implementing systems and practices that support high quality clinical practice. Managers oversee, guide and direct staff by providing leadership and advice ensuring appropriate clinical governance, continuous quality improvement, and leading safety programs. Managers develop, implement and monitor performance indicators for the identification, management and reporting of risk. Managers implement the Clinical Governance Framework; Consumer Engagement Framework and the requirements of the National Safety & Quality Standards within their areas of responsibility. Managers are expected to demonstrate diligence and honesty in the management of public resources.

Managers organise, direct and manage the performance of staff to meet operational requirements; implement and promote evidence based standards and policies that are compliant with relevant, professional, industrial and legislative requirements. Managers engage with and listen to staff, and create an environment where staff feel able to speak up in relation to concerns about safety. Managers address concerns raised and provide regular, ongoing feedback in the interests of improving care and safety.

Executive/Divisional Directors

Executive/Divisional Directors are accountable for embedding the Clinical Governance Framework; Consumer Engagement Framework and the requirements of the National Safety & Quality Standards into their areas of responsibility and providing assurance to the Executive and Board that these systems are in place and work effectively, all risks are known and mitigated and that staff understand their safety and quality responsibilities.

It is expected that those holding senior leadership positions will model the highest standards of ethical and professional behaviour.

WCHN Committees

WCHN Committees support Executive Directors to implement and evaluate organisational systems, support divisions to work together to identify and mitigate risk and continuously improve practice. They support the organisation to work as a single entity.

Chief Executive Officer

The Chief Executive has overall accountability for safety, care delivery, system governance and monitoring.

Board

The Board is accountable for governance, monitoring, compliance and ensuring the executive are discharging their responsibilities in managing the organisation.

Four Strategic Priorities



Improved health and wellbeing of families and communities



Meaningful gains in Aboriginal health and wellbeing



Provide leading healthcare for women, babies, children and young people



Create one health network

Key Enablers

Effective communication

Consumer and community engagement

Culture and leadership

Engaged and capable workforce

Enabling technology

Research

Productive partnerships

Contemporary infrastructure

Financial sustainability

Continuous improvement and innovation

Mission To improve the health and wellbeing of families and communities by providing integrated care and support

Vision To be a leading and respected health network for women, babies, children, young people and their families

Values Compassion, Respect, Equity, Accountability, Together for Excellence

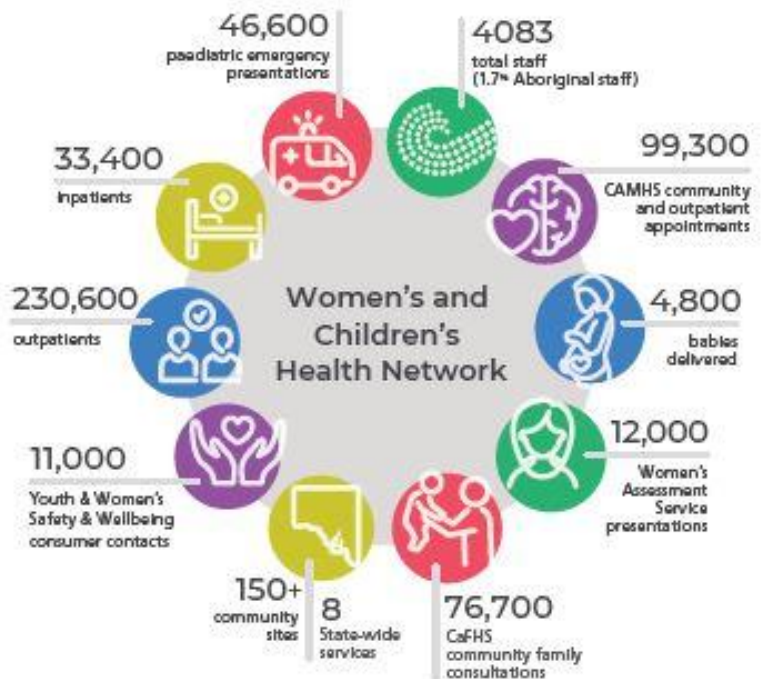
Our Story starts with our consumers and communities who are at the centre of everything that we do.

Our focus for the years ahead is to:

- Provide outstanding care and service
- Enhance our culture and leadership
- Design and deliver a new Women's and Children's Hospital
- Strengthen partnerships, expand innovation
- Through research, education and learning, inspire others, share specialist knowledge and deliver excellence in everything that we do
- Deliver an integrated WCHN

Our Way is underpinned by our agreed ways of working together that enable us as an organisation to:

- Share a common purpose and direction
- Use innovative and new ways to deliver our service
- Educate and support people to excel in the care that they give
- Grow and develop our current and future leaders
- Ensure that we have consistent behaviours and ways of working
- Implement processes and systems that are efficient and effective



State-wide services: Child and Family Health Service, Child and Adolescent Mental Health Service, Yarrow Place Rape and Sexual Assault Service, Disability Services, Child Protection Services, Metropolitan Youth Health, Women's Health Service, Women's Safety Strategy

