

## Senior Lecturer in Head and Neck Anatomy

School of Dentistry and Health Sciences

Faculty of Science

Campus	Orange
Classification	Level C
Nature of Employment	Continuing
Workplace Agreement	<a href="#">Charles Sturt University Enterprise Agreement</a>
Date Last Reviewed	May 2019

### Our University Values



### Our Core Competencies

Charles Sturt University (CSU) staff are expected to demonstrate the following competencies:

#### ***Set Direction and Deliver Results***

- Creating and innovating.
- Delivering results and meeting customer expectations.
- Entrepreneurial and commercial thinking.

#### ***Collaborate with Impact***

- Relating and networking.
- Working with people.
- Persuading and influencing.

#### ***Lead Self and Others***

- Adhering to principles and values.
- Deciding and initiating action.
- Adapting and responding to change.

## Faculty of Science – Organisational Environment

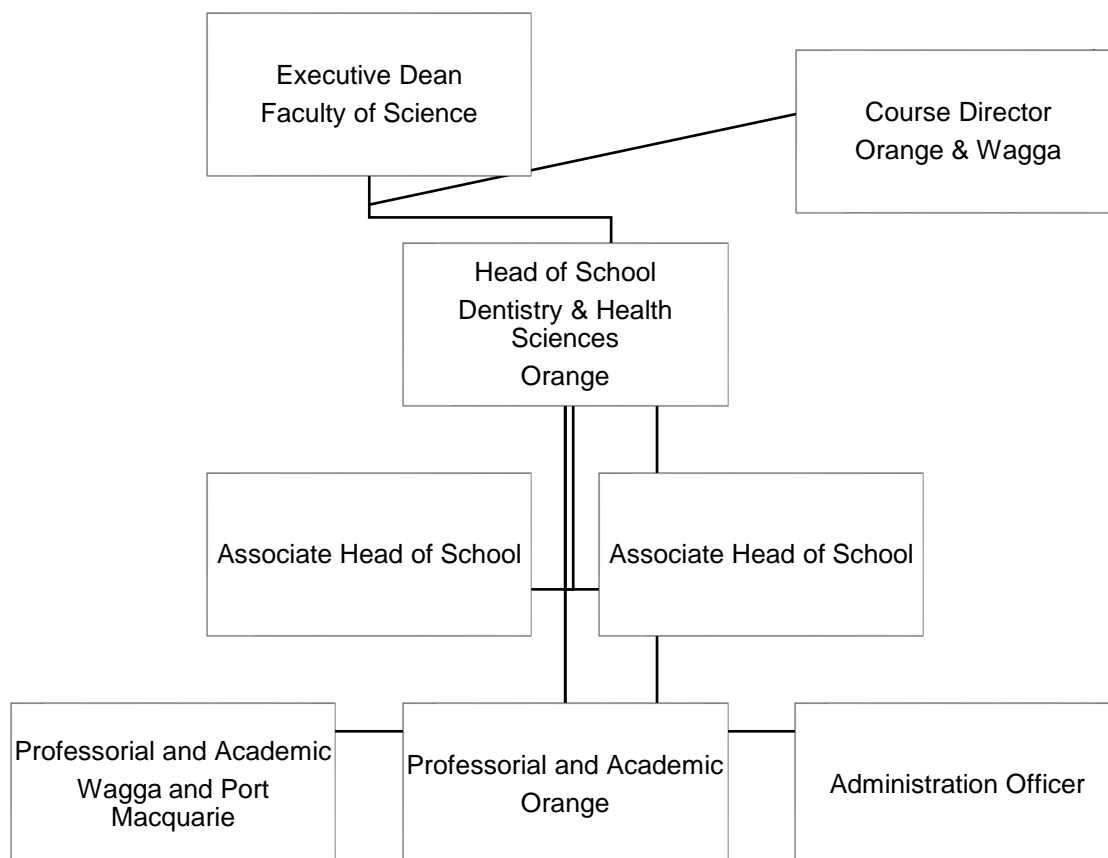
The [Faculty of Science](#) has more than 9000 students and over 500 staff dedicated to advancing scientific knowledge. It delivers flexible and innovative teaching programs designed to produce job-ready graduates for a diverse range of professions. As a leader in strategic and applied research the Faculty aims to enhance and extend scientific knowledge, train and educate future researchers as well as provide scientific solutions to current regional, national and global challenges. The staff and students of the Faculty achieve their educational and research goals through ethical practice, professional collaboration, industry involvement and a commitment to continual improvement.

The [School of Dentistry and Health Sciences](#) is a multi-campus, academic unit. The School offers a suite of undergraduate and postgraduate courses both onshore and offshore in a range of health disciplines including: Dentistry, Oral Health Therapy, Medical Radiation Science and Physics. The School is committed to enhancing its reputation as a high performing multidisciplinary school and seeks academics focused on providing quality education and being actively involved in a variety of development of health professional education and health based research programs that complement these courses.

Staff are focused on innovative and high quality education, using vibrant new learning spaces to encourage collaboration and support new methods of teaching and learning.

Through patient care, research and community service, our students and staff will also play a major role in helping to improve the oral and systemic health of people in regional/remote New South Wales, and across the nation and the world.

### Organisational Chart



### Reporting Relationships

This position reports to: Head of School, Dentistry and Health Sciences

This position supervises: Nil

## Key Working Relationships

Head of School  
Associate Head of School  
Courses Director(s)  
Faculty and School Staff

## Position Overview

This is a continuing full-time 1 FTE position. The Senior Lecturer in Head and Neck Anatomy will actively engage in teaching, research and curriculum development in the School of Dentistry and Health Sciences, with a special focus on head and neck anatomy and imaging anatomy.

The appointee will provide academic leadership for the Bachelor of Dental Science course and the Bachelor of Oral Health course, as well as contribute to curriculum and subject content development. Principal teaching duties will relate to approximately 60% emphasis on the Bachelor of Dental Science and the other 40% emphasis on the Bachelor of Oral Health course, but some preclinical or diagnostic science subject teaching duties may be required. Occasional travel among campuses to conduct teaching or research is required.

As well as teaching into the relevant programs the incumbent will also carry out research and contribute to/lead subject administration. It will be expected that multiple teaching methods (face to face and online delivery) are utilised. The successful candidate will be appointed as a Teaching Research academic.

## Principal Responsibilities – Level C (Senior Lecturer)

1. Make a significant contribution to the development, implementation and promotion of CSU learning and teaching methodologies, processes, technologies and tools to deliver and lead high quality student centred learning opportunities in the relevant discipline and as required to meet the teaching needs of the University. Achieve excellence in teaching in a range of delivery modes, which may include face to face and online teaching and assessment.
2. Supervise Research Higher Degree students;
3. Build strong professional relationships with students and provide timely and appropriate consultation and feedback;
4. Actively contribute significantly to collaborative processes to design, deliver and continually improve high quality courses and learning experiences for students including the giving and receiving of constructive feedback;
5. Actively contribute to high performing multi-disciplinary teams with an outcome focus and the development of a respectful, trusting and collaborative working environment;
6. Provide leadership and management, as appropriate, in the convening, coordination and delivery of subjects and/or courses. This may include coordinating and/or leading other staff including casual academic staff;
7. Conduct ethical, high quality research at a national level and contribute to knowledge through scholarship, publication and presentation and execute a research plan that aligns with CSU's Research Plan and objectives including pursuing funding opportunities;
8. Actively contribute to the governance, marketing and promotion, and administrative activities to facilitate the work of the Faculty/School.
9. Undertake larger projects that enhance curricula and that are of particular benefit to the School or discipline, or projects that investigate practice and university teaching/curricula;
10. Proactively develop and foster relationships with a range of stakeholders including community, government departments, and professional bodies;

11. Engage in professional practice in a discipline or field for the purposes of improving/transforming professional practice and feeding back into teaching and/or practice across the professions OR which demonstrates the maintenance or development of significant advanced practice skills or improves/transforms practices within the profession and which informs teaching. These activities could be achieved through scholarship, publication or presentation;
12. Engage in professional activities linked to knowledge development and problem solving such as research with, for and about the profession and about professional practice; projects related to critical evaluation and enhancement of practice; collaborations with research colleagues and professions/industries/businesses; authorship/editorship;
13. Other duties appropriate to the classification as required

## Capabilities

<b>Get Results</b>	Service Focused: <i>Strive to meet needs and exceed expectations of our students, communities and colleagues (performance focus, quality outcomes, Student welfare, equity &amp; conduct)</i>
	Business Savvy: <i>Continually look to add commercial value in our roles, processes and ways of working</i>
	Innovative: <i>With creativity at our core, be open to new ideas and seek to find better ways</i>
<b>Take Ownership</b>	Live our Values: <i>Uphold the CSU values daily in our own behaviours and interactions with others</i>
	Take Action: <i>Weigh up risks and make prompt decisions, backing ourselves and each other (delivery of strategies, projects)</i>
	Adapt to Change: <i>Explore the reasons for change and be willing to accept new ideas and initiatives</i>
<b>Collaborate with Others</b>	Network: <i>Bring people together and build relationships that deliver desired benefits and outcomes</i>
	Listen Closely: <i>Dig deep to understand others, using self-insight to build team spirit and recognise efforts</i>
	Influence: <i>Create compelling arguments to persuade others and promote ideas that add strategic value</i>

## Physical Capabilities

1. Physically able to sit for extended periods of time to perform reading, writing and computing related activities including keyboard and mouse operations;
2. On occasion travel in/drive a university vehicle distances up to 500kms per day within the terms of the University's Driving Hours Guidelines and Policy available at:  
<https://policy.csu.edu.au/view.current.php?id=00176> and  
<https://policy.csu.edu.au/view.current.php?id=00184>.

## Selection Criteria

Applicants are expected to address **all** selection criteria when applying for this position. Please outline and demonstrate evidence of qualifications and relevant experience as per the selection criteria. There is no need to attach your qualification documents or reference letters in the application. You will be required to have your qualification documents and identifications inspected upon instructions later.

### Essential Criteria

- A. Demonstrated evidence of completion of a **PhD** degree relevant to human anatomy, oral embryology or forensic dentistry;
- B. A record of significant achievement relevant to head and neck anatomy, and at a national level, in the scholarship of teaching and/or research or professional activity;
- C. Demonstrated experience in delivering lectures **AND** laboratory tutorials for human anatomy in a tertiary education institution; and
- D. Demonstrated evidence of leadership in an academic and/or clinical setting.

### Desirable Criteria

- E. Demonstrated evidence of eligibility for full or limited registration as a dentist with Australian Health Practitioner Regulation Agency (AHPRA).

## **Information for Prospective Staff**

### **Your Application**

E-recruitment is the method by which CSU manages its recruitment processes and it is preferred that all applications be lodged using this method. Please refer to [www.csu.edu.au/jobs/](http://www.csu.edu.au/jobs/).

If intending applicants are unable to access this website, please contact the HR Service Centre on 02 6338 4884.

### **Staff Benefits**

CSU is committed to providing an employment environment that fosters teamwork, innovation, reflective practice, continual learning, knowledge sharing and opportunities for staff to achieve their full potential. CSU is committed to providing a flexible working environment that encourages employees to live a balanced lifestyle, combining work and family responsibilities.

To find out more: <http://www.csu.edu.au/jobs/working-with-us/benefits-and-rewards>.

### **Essential Information for Staff**

- All employees have an obligation to comply with all the University's workplace health & safety policies, procedures and instructions and not place at risk the health and safety of any other person in the workplace;
- All employees are required to be aware of and demonstrate a commitment to the principles of equal opportunity in the workplace;
- All employees are to ensure the creation and maintenance of full and accurate records of official University business adheres to the University's Records Management Policies; and
- All employees are expected to undertake an induction program on commencement.

Further information regarding the policy and procedures applicable to Occupational Health and Safety and Equal Opportunity can be found on the CSU website <http://www.csu.edu.au/division/hr/>.

Further information regarding the policies and procedures of CSU can be found in the CSU Policy Library at: <https://www.csu.edu.au/about/policy>.

The following links are listed from [CSU Policy Library](#) on relevant specific policies:

- [Code of Conduct](#)
- [Staff Generic Responsibilities Policy](#)
- [Delegations and Authorisations Policy](#)
- [Outside Professional Activities Policy](#)
- [Intellectual Property Policy](#)