



Charles Sturt
University

Position Description



Senior Lecturer or Associate Professor in Clinical Dentistry (Restorative Dentistry)

School of Dentistry and Health Sciences

Faculty of Science

Classification	Level C/D
Delegation Band	Delegations and Authorisations Policy (see Section 3)
Nature of Employment	Fixed Term, Full-Time (Part-time negotiable)
Workplace Agreement	Charles Sturt University Enterprise Agreement
Date Last Reviewed	October 2020

Faculty of Science – Organisational Environment

The [Faculty of Science](#) has more than 9000 students and over 500 staff dedicated to advancing scientific knowledge. We deliver flexible, innovative [teaching programs](#) which provide graduates with the skills and knowledge to build a career, advance their profession and contribute to their community.

We are a leader in strategic and applied [research](#) in a wide array of sciences. We enhance and extend knowledge, train and educate future researchers and provide scientific solutions to current challenges. We achieve this through ethical practice, professional collaborations, industry involvement and a commitment to continual improvement.

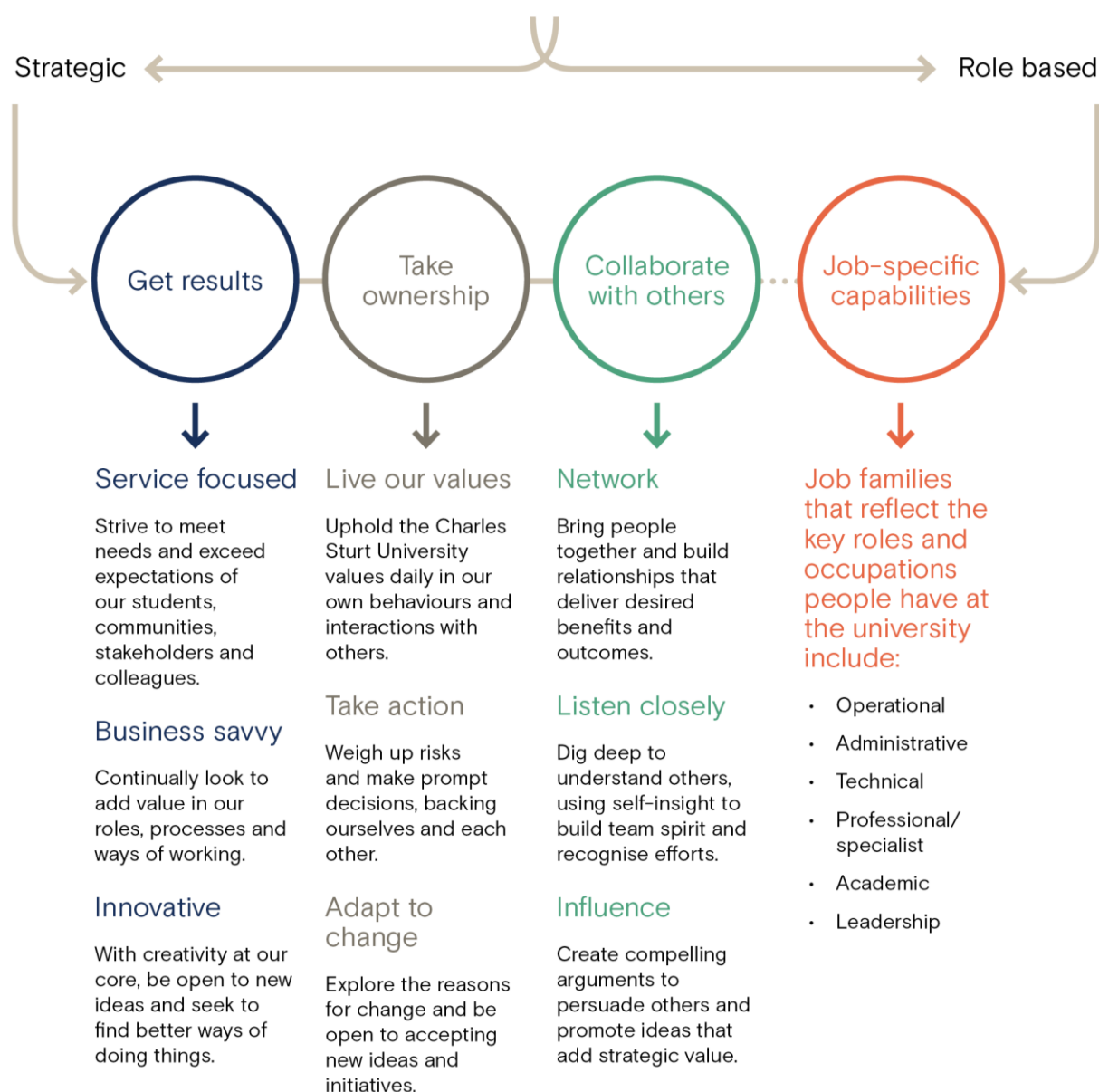
We also provide a range of health and other services to our regional communities through our [enterprises](#).

The School of Dentistry and Health Sciences

The [School of Dentistry and Health Sciences](#) brings together CSU's rich history of health professional education in Dentistry, Oral Health Therapy and Medical Radiation Science. The School is committed to enhancing its reputation for delivering quality assured clinical education and producing highly sought after graduates, who are competent, reflective practitioners committed to providing patient centred care.

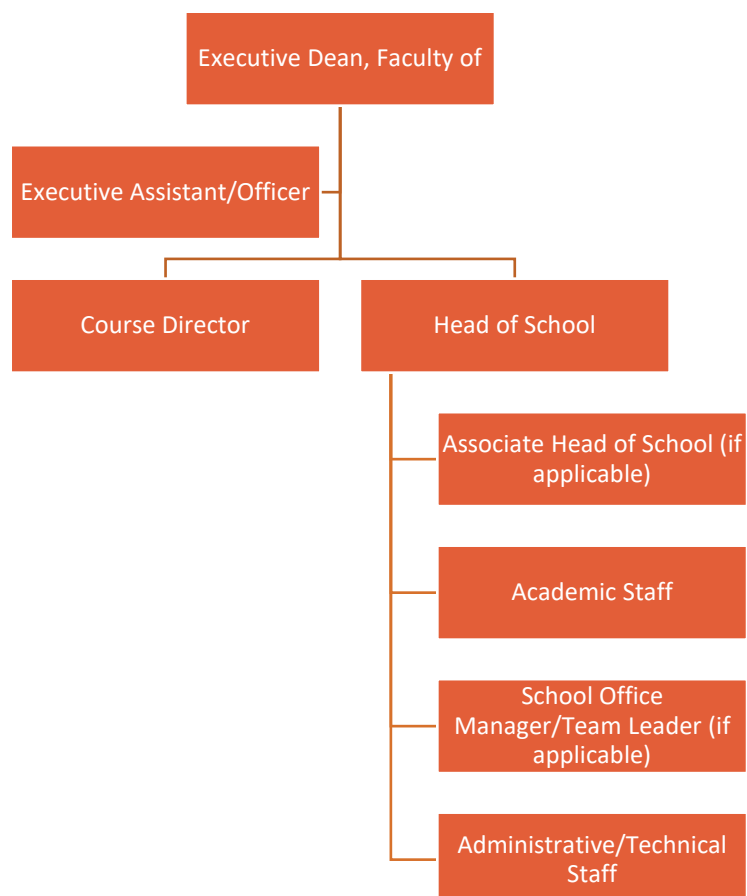


Our University Values





Organisational Chart



Reporting relationship

This position reports to: Head of School

This position supervises: N/A

Key working relationships

- Head of School
- Course Director
- Faculty and School Staff



Position overview

This is a fixed term, full-time position with negotiable part-time employment. However, the incumbent must maintain clinical practice and professional registration with the Australian Health Practitioner Regulation Agency (AHPRA). The incumbent may be able to provide clinical services in the CSU Oral Health and Dental Clinics upon negotiation with the Head of School and the Clinical Director.

The Senior Lecturer or Associate Professor in Clinical Dentistry (Restorative Dentistry) will be a clinical academic with extensive undergraduate teaching experience in restorative dentistry simulation clinics and have demonstrated experience in providing high quality clinical dental care in private or public health dental practice settings. Principal teaching duties involve both didactic and clinical responsibilities within a range of relevant subjects and to lead the thematic integration of pre-clinical and clinical restorative dentistry. The appointee will provide academic leadership within the discipline and contribute significantly to its administration and ongoing curriculum development, while progressing an active research profile with a strategic [research and innovation](#) focus aligned to the overall [strategies of the University](#). The incumbent will have a record of published research and be able to lead relevant research development within the School.

The School of Dentistry and Health Science places great importance on its relationships with the dental and health care professions and with rural and regional communities. The incumbent will be based on the Orange campus and be expected to fully engage, maintain and further develop these relationships.

Principal responsibilities

- Make an outstanding contribution to the development and implementation of quality assured learning and teaching practices in the Bachelor of Dental Science program and other programs, such as the Bachelor of Oral Health Therapy course, as required
- Lead the thematic integration of pre-clinical and clinical restorative dentistry, and teach into and supervise undergraduate clinics in the relevant subjects, as required
- Provide leadership in collaborative processes to design, deliver and continually improve a high quality curriculum within the discipline
- Provide positive learning experiences for students through the provision of fair, reliable and valid assessments and the delivery and receipt of constructive feedback
- Lead and manage the convening, coordination and delivery of subjects and/or courses, as required
- Promote a culture of mutual respect between staff and students
- Establish and maintain strategic relationships and networks with a range of stakeholders including community and professional bodies
- Develop and/or engage in research activities that align with University, Faculty and School strategies and support the development of collaborative research projects within the School and/or Faculty
- Develop and execute a research plan which aligns with CSU's Research Plan and objectives including securing external funding and maintaining up-to-date research records within CSU's research database



- Provide leadership and foster partnerships with healthcare professions and community that bring direct benefit to the strategic work of the University, in terms of teaching, clinical workplace learning, course profile and/or areas of research strength
- Make an outstanding contribution to the development and improvement of policy and practice through involvement in professional associations, accreditation authorities, conference organisations, advisory bodies, and national or international delegations, consistent with the University's Outside Professional Activities Policy
- Develop, lead and/or evaluate continuing professional education and maintain professional accreditation.
- Participate and demonstrate leadership in the governance, marketing and promotion, and administrative activities to facilitate the work of the Faculty of Science and the School

Capabilities

- Possess determination and resilience to set and meet challenging objectives and the ability to organise resources to achieve outcomes and monitor ongoing performance
- The ability to effectively share ideas, thoughts, information and feelings with a diverse range of audiences and the ability to inspire and influence others to achieve common goals through effective communication
- The ability to think strategically, provide analysis, advice and direction, which supports the long and short term goals of the School, Faculty and University
- The ability to work cooperatively within the School and across the organisation to understand team dynamics, to contribute to teams, and foster environments of mutual trust and respect

Physical capabilities.

The incumbent may be required to perform the following:

- Stand for long periods during clinical teaching
- On occasion drive a university vehicle distances up to 500km per day within the terms of the University's [Driving Hours Guidelines and Policy](#).



Selection criteria

Applicants are expected to address the selection criteria appropriate to the level of their application.

Essential for Level C (Senior Lecturer)

- A. A postgraduate qualification relevant to restorative dentistry, or equivalent accreditation and standing
- B. Registration with AHPRA and In good standing with the Dental Board of Australia
- C. A record of academic achievement of national standing through documented contributions to academic leadership and/or the scholarship of teaching and learning, research in an area relevant to restorative dentistry, or other professional activity
- D. Significant experience in, and comprehensive knowledge relevant to pre-clinical simulation clinic teaching and clinical supervision relevant to restorative dentistry, and evidence of success in delivering high quality student centred learning and teaching in this area
- E. Superior written and oral communication and interpersonal skills including negotiating, presenting, active listening and the giving and receiving of constructive feedback
- F. Demonstrated success in identifying, building and maintaining strong partnerships, networks and relationships to achieve professional and team objectives
- G. Demonstrated ability to foster a collegial work environment and to work collaboratively, independently in a large complex academic setting with an outcome orientated focus and to contribute to the leadership and collegial life of the University and profession and/or discipline

Essential Criteria for Level D (Associate Professor)

- A. A doctoral qualification relevant to restorative dentistry, or equivalent accreditation and standing
- B. Registration with AHPRA and In good standing with the Dental Board of Australia
- C. A record of academic achievement of national and international standing through outstanding contributions to academic leadership and/or the scholarship of teaching and learning, research in an area relevant to restorative dentistry, or other professional activity
- D. Significant experience in the leadership of clinical teaching with comprehensive knowledge relevant to the teaching and clinical practice of restorative dentistry and evidence of success in delivering high quality student centred learning and teaching in this are
- E. Superior written and oral communication and interpersonal skills including negotiating, presenting, active listening and the giving and receiving of constructive feedback
- F. Demonstrated success in identifying, building and maintaining strong partnerships, networks and relationships to achieve professional and team objectives
- G. Demonstrated ability to foster a collegial work environment and to work collaboratively, independently in a large complex academic setting with an outcome orientated focus and to contribute to the leadership and collegial life of the University and profession and/or discipline



Desirable for Levels C and D

- H. Demonstrated capacity to utilise and embrace current and emerging technologies to achieve work objectives
- I. Demonstrated understanding of contemporary dental curriculum models and graduate professional competencies
- J. Demonstrated commitment to applying culturally respectful, inclusive and safe practices in the workplace

