

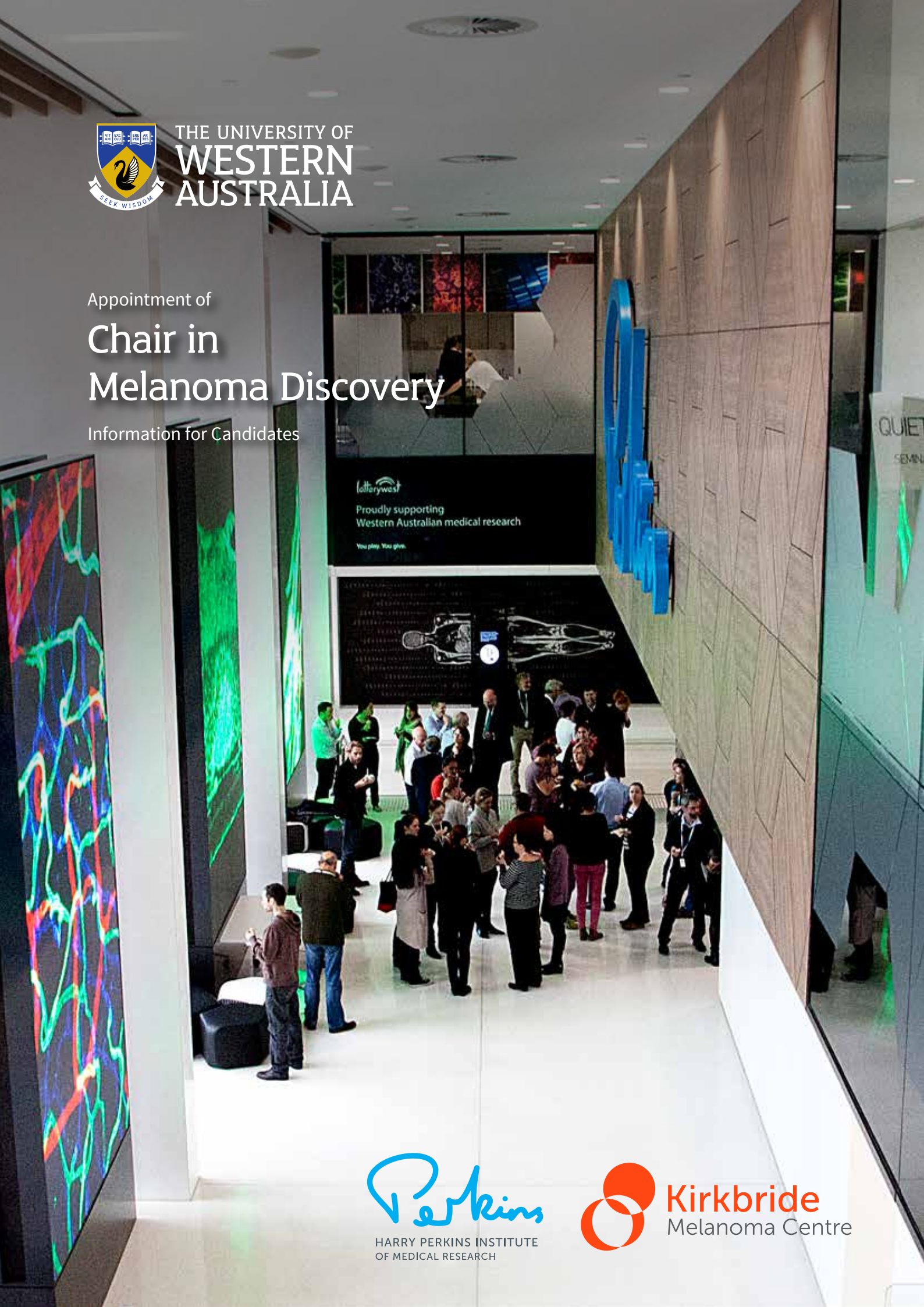


THE UNIVERSITY OF
**WESTERN
AUSTRALIA**

Appointment of

Chair in Melanoma Discovery

Information for Candidates



Perkins
HARRY PERKINS INSTITUTE
OF MEDICAL RESEARCH

Kirkbride
Melanoma Centre



Thank you
for your
interest in the
position of Chair in
Melanoma Discovery
at The University of
Western Australia.

Welcome

We offer you an exciting opportunity to work with an institution that has developed a strong reputation for excellence in teaching, learning and research. The University's Vision 2030 is currently identifying the best ways that UWA can build on these strong foundations to become a hub of energy, innovation and aspiration for our future students, staff and stakeholders to amplify our global standing and impact.

At UWA we want you to pursue excellence, challenge convention and be inspired by unlimited possibilities. We offer you an environment in which you can really make a difference to the world and encourage others to do so too. You are not only joining a World Top 100 university, you will be part of a community of people committed to the world's advancement.

As the only Western Australian university in the Group of Eight, a coalition of leading Australian universities, you will have access to an exceptional support network committed to creating change.

Your future UWA colleagues are academic leaders in the broadest sense and have an established international reputation for outstanding teaching and research. We look forward to hearing from like-minded candidates.

Professor Dawn Freshwater
Vice-Chancellor

The new Professorial position will provide a challenging and exciting opportunity for a highly qualified and internationally renowned authority in melanoma research to lead translational medical discoveries. Based at the Harry Perkins Institute of Medical Research in Nedlands, the Chair in Melanoma Discovery will be a member of UWA's Centre for Medical Research within the Faculty of Health and Medical Sciences.

The Harry Perkins Institute of Medical Research (the Perkins) is the premier adult medical research institute in Western Australia. The Perkins brings together exceptional world-class scientists, clinicians, and researchers in state-of-the-art facilities to foster excellence in collaborative discovery and translational research. The Perkins' contemporary buildings are co-located in the heart of academic and clinical teaching precincts and are designed to facilitate multidisciplinary research. The buildings house a number of unique state facilities and provide access to leading-edge technologies and a stimulating research environment.

To continue to build our vibrant and innovative research community we are dedicated to recruiting the world's best to create a critical mass of talent and expertise dedicated to defeating disease. The Perkins is seeking a bench scientist with an outstanding track-record, recognised at an international level as an authority and leader in melanoma discovery research. The inaugural Chair in Melanoma Discovery will have the opportunity to make a major impact in the field and will play a key role in attracting and leading an exceptional team of high quality investigators dedicated to translating discoveries into clinical practice.

On behalf of the Perkins, I welcome your application.



Professor Peter Leedman
Director
Harry Perkins Institute of Medical Research



The University of Western Australia

When you join the UWA community, you will find dynamic and forward-thinking colleagues who, like you, are determined to challenge convention and drive innovation.

The University is regarded as one of Australia's top research institutions. Its strong research culture sees it attract high levels of competitive research funding. We operate more than 130 research and training centres and receive roughly 80 per cent of all research funding to Western Australian universities annually.

We celebrate strong industry partnerships and are placed equal first in Australia on key measures, including research intensity and research grants, according to the *Good Universities Guide 2016*. QS World Rankings has given us its highest rating of 5 Stars+ and we rank 91st in ARWU, 93rd in QS and 111th in THE.

At UWA, we help people make the most of the possibilities presented. The University is a community of people with a desire to make the most of their potential and contribute to the world's advancement. Join us and pursue your ambitions.

uwa.edu.au

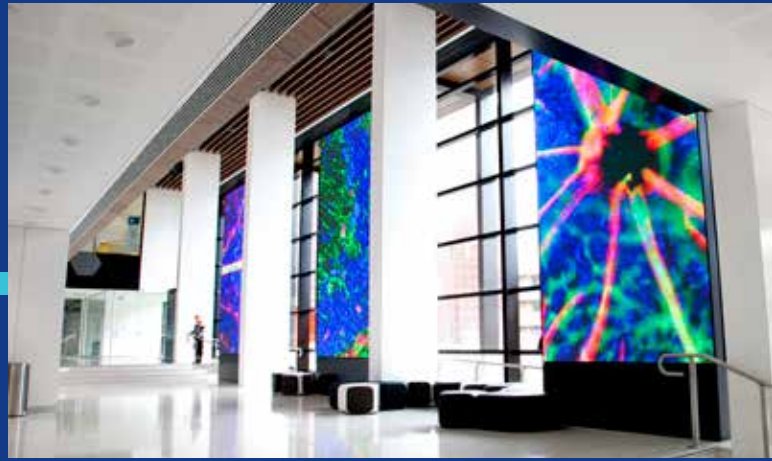
Mission

To provide world class education, research and community engagement for the advancement of prosperity and welfare of our communities.

Vision

To become recognised as one of the world's top 50 global universities by 2050.





Harry Perkins Institute of Medical Research

With a foundation of twenty-years of scientific discovery and a collaborative team of over 250, the Perkins vision is to be a world-leader in innovative medical research that delivers global health improvements. To enable this vision, the Perkins is dedicated to building internationally renowned, highly skilled research teams with access to state-of-the-art facilities and cutting-edge technologies. This drives new discoveries and their translation into more effective treatments and cures.

While the Perkins conducts research into a range of diseases, our focus is on the three major disease areas of cancer, cardiovascular disease, and diabetes. The platform for our research is through the three major divisions of Cancer and Cell Biology, Clinical Science and Molecular Medicine.

Within the Perkins Cancer and Cell Biology Division, the Kirkbride Melanoma Centre is dedicated to world-leading melanoma discovery research and its translation into clinical practice. To foster this, the Centre has raised seed funding to support the appointment of the Chair in Melanoma Discovery. In keeping with the vision of improving community health, in early 2018 the Centre welcomed the Western Australian Melanoma Advisory Service, creating the WA Kirkbride Melanoma Advisory Service. This state advisory service provides comprehensive support and advice to patients and doctors from a multi-disciplinary panel of specialists regarding melanoma management, treatment, and prognosis. Additionally, the Centre has an extensive melanoma patient database, providing powerful research prospects with the potential for multi-institution collaborative opportunities. The Chair in Melanoma Discovery will be underpinned by supporting research staff.

The Kirkbride Melanoma Centre has access to and the support of additional collaborative areas of the high-quality Cancer and Cell Biology Division, including the Centre for Advanced Cancer Genomics, a pre-clinical Cancer Imaging Facility and Fluorescence-activated Cell Sorting (FACS) facilities. The Centre for Advanced Cancer Genomics is a cutting-edge state facility integrating advanced single cell sequencing, genomic analysis technologies, and bioinformatics. It provides world-class capabilities to a highly competitive and collaborative network of cancer researchers from all of the major institutions in the state. The state ACRF Cancer Imaging Facility provides state-of-the-art, high-resolution, non-invasive, in-vivo preclinical imaging, with the unique advantage of all images being read by a Radiologist and Nuclear Medicine specialist. In addition to the strong links between the Perkins, The University of Western Australia, and the major teaching hospitals, the Kirkbride Melanoma Centre will collaborate extensively, locally, nationally and internationally.

Complementing the outstanding facilities and preclinical resources, is the Perkins award-winning early-phase clinical trial facility, Linear Clinical Research Ltd. Accessibility to oncology-focused early-phase clinical trial experts and infrastructure enables the fast-tracked collection of quality assured clinical data to realise a therapy's medical potential sooner. Moreover, the Perkins' strong collaborative ties with clinical colleagues ensures that each stage of the pipeline, from bedside to the lab bench and back to bedside is fully supported and accessible.

perkins.org.au

University governance and management

The University is governed by the Senate, comprising 16 members from a range of backgrounds: community, staff, students and graduates.

Chaired by the Chancellor, the Hon. Robert French, the key roles of the Senate are:

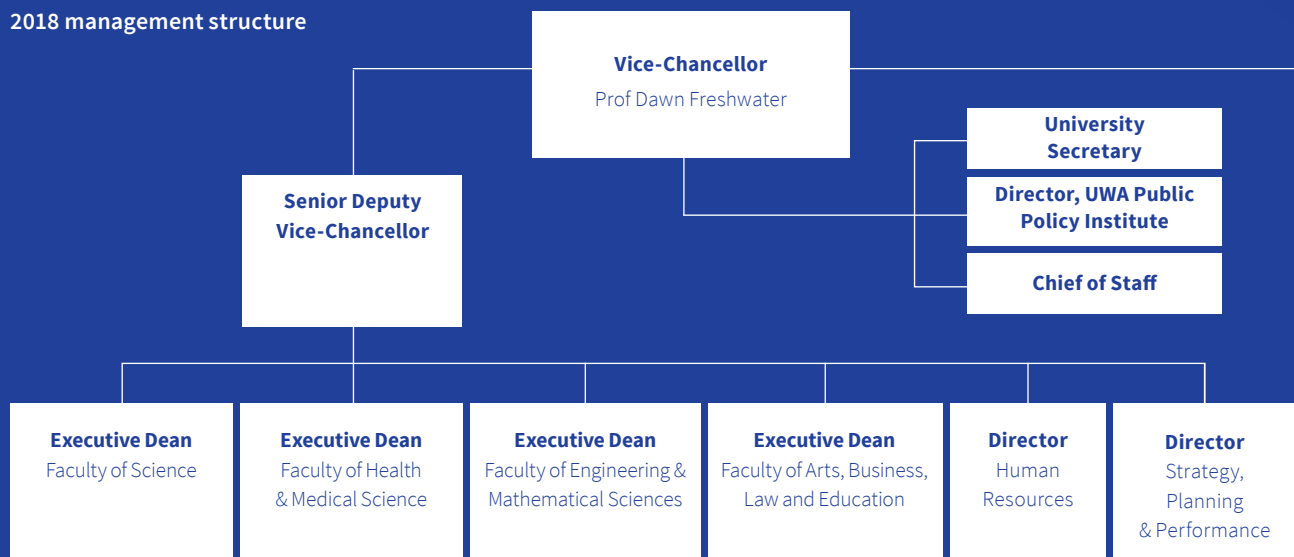
- providing a broad overview of strategic directions in the University
- overseeing corporate governance
- overseeing management of financial, human and physical resources
- performance monitoring
- to take legislative responsibility
- to support, guide and monitor the performance of the Vice-Chancellor

Key stats

Student enrolments 2017	24,327
Total staff (FTE) 2017	3,264
Research publications 2017	5,065



2018 management structure



Key institutional networks

Group of Eight

The Group of Eight is a coalition of leading Australian universities, intensive in research and comprehensive in general and professional education.

go8.edu.au

Matariki Network of Universities

This international group of seven universities across seven nations focuses on strong links between research and undergraduate teaching, promoting international best practice in research and education.

matarikinetwork.com

Worldwide Universities Network

The major issues facing our planet are of a magnitude that no single institution or organisation can address on its own. WUN collaborations aim to involve a number of world-leading academic partners in addressing our current 'Global Challenges'.

wun.ac.uk

**Deputy
Vice-Chancellor**
Research

**Deputy
Vice-Chancellor**
Community
and Engagement

**Deputy
Vice-Chancellor**
Education

Executive Director
Corporate Services

Pro Vice-Chancellor
Indigenous Education



Faculty of Health and Medical Sciences

The Faculty of Health and Medical Sciences is a large interdisciplinary health faculty which includes the Schools of Medicine, Dentistry, Allied Health, Biomedical Sciences and Population and Global Health. The Faculty boasts some of the University of Western Australia's most outstanding researchers. Our most notable being Professor Barry Marshall and Emeritus Professor Robin Warren who were awarded the 2005 Nobel Prize in Physiology or Medicine for their discovery of the bacterium *Helicobacter* and its role in gastritis and peptic ulcer disease. This marvellous achievement, together with consistently being ranked in the top 75 in the world, highlight our international reputation and high global standing for research excellence. Our high quality research is undertaken within each of the Schools as well as the Centres which it hosts.

The Faculty has a strong record of quality education and teaches a comprehensive programme of undergraduate courses in the biomedical sciences as well as postgraduate coursework programmes and research degrees. Our professional entry-to practice degrees include programmes in medicine, dentistry, pharmacy, podiatric medicine and social work. We also offer an extensive range of postgraduate coursework and research courses in public health, clinical research,



dental science, health professional education, clinical pathology, infectious diseases, rural and remote medicine and neonatal and child health.

Our academics and students have access to high quality and modern teaching facilities. Our Medical and Dental Library has recently undergone significant refurbishment to generate a world-class technology-rich educational hub highly valued by students and staff which meets the changing working styles of students.

They have access to a modern, vibrant and dynamic facility with collaborative and individual learning spaces, a learning suite, comfortable work spaces and quiet rooms, together with an up-to-date book collection.

The Faculty comprises in excess of 400 full-time equivalent academic staff, including 80 Level E Professorial appointments, and approximately 1,000 adjunct and clinical staff assisting with teaching and research. There is an equivalent full-time student load of 2,675 enrolled in a range of undergraduate majors and graduate degree programs.

The Faculty of Health and Medical Sciences is currently recruiting to a number of senior Level E professorial positions. This is an exciting time to join our staff and enhance research and teaching excellence in Western Australia.



Western Australia and Perth

Western Australia is the second largest state in the world, and our sunny climate has shaped some of the world's most biodiverse landscapes.

You will benefit from a Mediterranean climate in the south, desert in the east and tropical conditions in the north. Western Australia really is a year round destination.

Perth not only offers you natural beauty but an eclectic mix of restaurants, shopping and cultural experiences. It is also home to magnificent beaches, beautiful wineries and one of the world's largest inner city parks – Kings Park.

The University of Western Australia is also the founder of Perth's cultural highlight, the Perth Festival. The festival is one of the most exciting arts festivals in the world and is the longest running international arts festival in Australia.

uwa.edu.au/perthfestival



Role, key responsibilities and selection criteria

Role

The Chair in Melanoma Discovery will provide academic leadership, foster excellence in teaching, and play a key role in creating a world-class team of exceptional investigators focused on internationally recognised melanoma discovery research. You will have an outstanding track-record and be established as an eminent international authority and leader in the discipline.

You will share the UWA and Perkins vision of being a world leader in innovative medical research and its translation into lasting health benefits. This will be achieved through enacting the values of respect, innovation, passion and collaboration.



Conditions of employment

The appointment will be for a fixed term period of five years with prospect for renewal. An attractive and flexibly constructed remuneration package will include:

- Professorial salary;
- Employer contribution to superannuation of 17%;
- Annual leave of 20 working days per annum;
- Long service leave;
- Eligibility for sabbatical leave;
- A substantial start-up funding package for infrastructure, consumables and research support staff will be available;
- Visa sponsorship and relocation assistance for international appointees.



Key responsibilities

- Lead a program of internationally recognised melanoma-focused discovery research initiatives, promoting excellence, continuous improvement, and high quality research outcomes.
- Provide strong academic and strategic leadership to nurture and expand collaborative relationships with research groups, institutes, and other collaborators.
- Contribute to education of undergraduate, postgraduate and research students and foster excellence in teaching. Develop the research careers of others through supervision mentorship.
- Liaise and effectively communicate with relevant sections of the community, professional bodies, government departments, non-government-organisations, and industry partners to foster relationships.
- Actively seek to translate new discoveries into clinical practice via development of new diagnostics, therapeutics, or preventative strategies.
- Actively communicate research findings through high-impact publications in academic journals, and via reports, meetings, conferences, and teaching.
- Actively seek and secure significant research resources through external national/international grant funding and other business development opportunities to drive research and collaboration.
- Provide leadership to foster a culture of innovative and collaborative research and an environment of teaching excellence through developing transformational research projects.
- Support UWA and the Perkins in their joint commitment to equity, diversity, safety and wellbeing principles.

Selection criteria

Qualifications

- A PhD or equivalent scholarly attainment is essential.
- Recognition as an eminent international authority in the discipline.

The successful candidate will demonstrate:

Leadership

- High level of interpersonal skills with an ability to provide leadership in an academic environment and in community affairs related to the discipline.
- Capacity to work effectively and collaboratively in a multidisciplinary team and to liaise and communicate effectively with members of the community and professional and industry bodies.
- Highly developed capacity to shape strategic thinking and actively seek translation of research discoveries into clinical practice.

Research and scholarship

- Academic leadership as evidenced by high-impact publications in academic journals, books, performances and other scholarly works, and invitations to present at international meetings.
- Ability to attract significant research resources including national/international grant funding and through business development opportunities with industry.
- Successful supervision of undergraduate and postgraduate students and willingness to supervise major honours or postgraduate research projects.
- Ability to foster the research of other groups and individuals within and external to the school and related disciplines.

Teaching and Learning

- Outstanding personal contribution and commitment to high quality teaching at all levels.
- An active role in the maintenance of academic standards and in the development of curriculum areas within the discipline.

Service

- Willingness to represent the discipline at school and University level.

General

- Willingness to work within the legislative requirements and policies of the University and the Perkins.

Applications

Thank you for your interest in this position. If you wish to proceed, the following information will assist you with your application.

Your application must include the following:

- A curriculum vitae;
- A statement that clearly addresses the selection criteria;
- A list of publications;
- The names and email addresses of three referees who can be contacted for a confidential report.

Please note that your permission will be sought prior to referees being contacted. The University of Western Australia provides visa sponsorship for international appointees. UWA is a National Employer of Choice for Women and a member of Athena SWAN.

Closing date for applications is Friday, 12 October 2018

Lodging your application

The University of Western Australia and the Harry Perkins Institute of Medical Research are being supported by Perrett Laver for this appointment. Enquiries and requests for further information may be addressed in confidence to:

Dr Richard Weir
Research Associate
Tel: + 02 8354 4015
richard.weir@perrettlaver.com

