

# Head, Strategic and Defence Studies Centre

## Coral Bell School of Asia Pacific Affairs

Information for prospective candidates



Australian  
National  
University



The Australian National University acknowledges, celebrates and pays our respects to the Ngunnawal and Ngambri people of the Canberra region and to all First Nations Australians on whose traditional lands we meet and work, and whose cultures are among the oldest continuing cultures in human history.



# Message from the Director, Coral Bell School of Asia Pacific Affairs



Thank you for your interest in the position of Head of our Strategic and Defence Studies Centre (SDSC) in the Coral Bell School of Asia Pacific Affairs (Bell School), at The Australian National University.

The Bell School is a world-leading school of Asia-and-the-Pacific and international politics, society, strategy, security, and diplomacy – one known for academic excellence in research and teaching, for the positive contribution that our research makes beyond academia, and for our culture of equity, inclusivity, and respect.

The Bell School is home to four outstanding academic units, one of which is the Strategic and Defence Studies Centre.

Established in 1966, SDSC is Australia's leading centre devoted to studying the role of armed force in its political context. Its researchers are internationally recognised for their impact in teaching and research across military history and operations, Australian defence policy and strategy, and geopolitical developments in Asia and the Pacific. Contributing to policy making within and beyond Australia, the Centre's staff also advises Government and are regularly called upon for media commentary.

Former Heads of SDSC comprise an esteemed group of leading thinkers and educators. We aim to continue this tradition of excellence by appointing a new Head of SDSC who would represent and reflect the Centre's influence and esteem. The appointment will be to a continuing professorial position with a five-year term as Head of SDSC. If you are seeking a rewarding leadership role in a high-profile, research-intensive academic environment, I encourage you to apply and invite you to contact me to discuss the position.

Professor Toni Erskine  
Director, Coral Bell School of Asia Pacific Affairs  
The Australian National University

# Introducing ANU



“Striving for excellence.”  
Learn more about our  
ANU Strategic Plan here  
[“ANU2025”](#)

**“At ANU we are ambitious for the future.  
We strive to be one of the world’s  
leading Universities that sets the  
standard for education, research and its  
translation within the Asia-Pacific.”**

— Professor Brian Schmidt  
Vice-Chancellor and President  
The Australian National University

## Our Vision

- Contemporary ANU will sit among the great universities of the world, and be defined by a culture of excellence in everything that we do.
- We will be renowned for the excellence of our research, which will be international in scope and quality, always measured against the best in the world. Our research investment will be strategic, taking a long-term view and focus on high-quality activities, high-impact infrastructure and areas of high national importance.
- We will be renowned for the excellence of our undergraduate and graduate education: excellence in student cohort, excellence in teaching, excellence in student experience, and excellence in outcomes.
- We will be renowned for the quality of the contribution our research and education make to societal transformation. We will identify emerging areas of need for the nation and provide research and education that will equip Australia to cope with challenges not yet imagined.
- ANU research, education and contributions to public policy-making will change Australia and change the world. It will have impact.

## Our partnerships

The University has strong links with leading research institutions across the globe such as King's College London. ANU is also part of the International Alliance of Research Universities, which includes:

- University of Cambridge
- University of Oxford
- University of California, Berkeley
- Yale University
- Peking University
- University of Tokyo
- University of Capetown
- University of Copenhagen
- National University of Singapore
- ETH Zürich

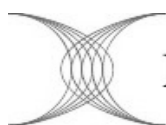
## Our Values

- We bring a distinctive excellence to our work and have the confidence to pursue original ideas.
- We are inclusive, open and respectful, reflecting the diversity of our nation.
- We are committed to integrity and ethical behaviour.
- We value, enable, reward and celebrate collegiality.
- We embrace informed risk-taking in pursuit of our objectives.
- We are committed to better outcomes for our community, the environment, our nation and the world.
- We are committed to the service of our nation, through original thinking and through courage in advancing our ideas.

## Our location

The University campus has over 200 buildings and occupies 145 hectares adjacent to the city centre of Australia's national capital, Canberra. The University also has a number of smaller campuses:

- Mount Stromlo Observatory (West of Canberra)
- Siding Spring Observatory (Near Coonabarabran, western New South Wales)
- North Australia Research Unit (Darwin, Northern Territory)
- Kioloa (Coastal campus near Bawley Point, on the New South Wales South Coast)
- ANU Medical School – Canberra Hospital
- ANU Medical School – Calvary Hospital
- Health Facilities in South East New South Wales



IARU



GROUP  
OF EIGHT  
AUSTRALIA



Further information can be found at [anu.edu.au](https://anu.edu.au)

# ANU Snapshot

ANU is ranked first in Australia and 30 in the world.

QS World University Rankings 2023



Ranked top 10 in Australia for producing the most employable graduates.<sup>1</sup>



22,141 students enrolled at ANU with a 5 star student to staff ratio.<sup>2</sup>



13 students awarded the Kambri Indigenous Scholarship in 2021.<sup>3</sup>



6,036 student accommodation beds on campus.



2,372 students enrolled from regional and remote areas of Australia.



6 Nobel laureates among our staff and alumni.



127,478 alumni located around the world.<sup>4</sup>



84% of our teaching and research staff have a doctorate.



The First Australian university to be accepted into the US National Engineering Grand Challenge Scholars Program.

(1) QS Graduate Employability Rankings 2022

(2) Good Universities Guide 2022

(3) As at 2021

(4) As at 2022



# ANU Academic Colleges

ANU has seven academic colleges, each housing the schools and research centres that contribute to various broad disciplines. The ANU Colleges link research and teaching at undergraduate, postgraduate and higher degree levels. They undertake globally significant research and provide education programs at the highest standards.

## ANU College of Science

In the ANU College of Science (CoS) staff and students come from all over the world to conduct, and to learn about, scientific research at the highest level. The College comprises: the Research School of Astronomy and Astrophysics, the Research School of Biology, the Research School of Chemistry, the Research School of Earth Science, the Fenner School of Environment and Society, the Mathematical Sciences Institute, the Research School of Physics, and the Centre for the Public Awareness of Science.

> [science.anu.edu.au](https://science.anu.edu.au)

## ANU College of Health and Medicine

The ANU College of Health and Medicine (CHM) serves society through transformational research and education in health and medicine, working in partnership with the health sector at local, national and international levels. It comprises the School of Medicine and Psychology, the John Curtin School of Medical Research and the National Centre for Epidemiology and Population Health.

> [health.anu.edu.au](https://health.anu.edu.au)

## ANU College of Law

The ANU College of Law (CoL) is Australia's national law school, committed to legal research and education at the highest level, and to striving for continuous improvement in the law for the benefit of national and international communities.

> [law.anu.edu.au](https://law.anu.edu.au)

## ANU College of Arts and Social Sciences

The ANU College of Arts and Social Sciences (CASS) is the research and education college for the broad disciplines of the creative arts, humanities and the social sciences. The College has two research schools: the Research School of Social Sciences and the Research School of Humanities and the Arts.

> [cass.anu.edu.au](https://cass.anu.edu.au)

## ANU College of Engineering and Computer Science

The ANU College of Engineering and Computer Science (CECS) is shaping a new intellectual agenda to reimagine engineering, computing, cybernetics and the use of technology in the world. We are a vibrant and diverse community comprised of three Schools: Computing, Cybernetics, and Engineering, supported by the Professional Services Group. We draw on our disciplinary foundations to find and solve problems of global importance; bringing together expertise in social, technical, ecological and scientific systems to build a new approach.

> [cecs.anu.edu.au](https://cecs.anu.edu.au)

## ANU College of Asia and the Pacific

The ANU College of Asia and the Pacific (CAP) hosts the largest assembly of scholars dedicated to working on Asia and the Pacific in the English-speaking world. The College comprises four Schools: the School of Culture, History and Language; the Coral Bell School of Asia Pacific Affairs; the Crawford School of Public Policy; and the School of Regulation and Global Governance (RegNet). The Australian Centre on China in the World is also based within CAP.

> [asiapacific.anu.edu.au](https://asiapacific.anu.edu.au)

## ANU College of Business and Economics

The ANU College of Business and Economics (CBE) seeks to advance knowledge in the fields of business and economics through fundamental and high quality research, and provision of an excellent education and student experience. CBE is made up of four Research Schools; Research School of Accounting; Research School of Economics; Research School of Finance, Actuarial Studies and Statistics and; Research School of Management.

> [cbe.anu.edu.au](https://cbe.anu.edu.au)



Further information can be found at  
[anu.edu.au/about/academic-colleges](https://anu.edu.au/about/academic-colleges)

# ANU College of Asia & the Pacific



The College of Asia and the Pacific (CAP) is like no other College at ANU or university faculty in Australia. It is one of the world's leading centres for teaching, research and outreach in the Asia and Pacific region. For the last 75 years, the College and its predecessors have played a vital role in informing Australia's public policy and intellectual engagement with societies, cultures and economies of Asia and the Pacific.



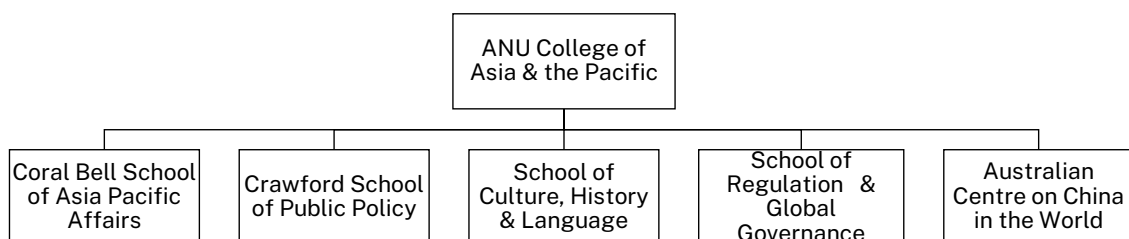
The College's education portfolio of courses and programs reflects the distinctive and interdisciplinary research expertise of its four Research Schools. It offers approximately 30 specialised postgraduate programs in international, policy and economic studies. The College's postgraduate education programs attract a significant number of international scholarship students from our region. The College offers a unique breadth of Asia and Pacific study courses as well as a large security studies program at the undergraduate level, and delivers a number of less commonly taught Asian and Pacific languages online as part of the University's national mandate. Student satisfaction scores for the College's courses are amongst the highest in the University. Executive education, especially for government departments and agencies, is an important element of the College's education and policy impact work.

The College is a global centre of research on Asia and the Pacific, with more than 200 researchers covering a wide geographical range across more than 40 areas of the Asia and Pacific region and Australia. Research produced in the College is characterised by disciplinary expertise and innovation, a motivation to address societal and policy challenges, and deep engagement with international partner universities, distributed networks and communities.

The College is committed to inter-disciplinary research that responds to the big challenges the world faces in governance, security, the economy, health, the global climate and the interface between these domains. Experts in the College are called upon regularly to provide key expertise to help guide the Australian Government's pandemic response to COVID-19, from economic to societal perspectives.

Our researchers have been continuing to engage with the region through critical research initiatives, finding ingenious ways to strengthen engagement, and to continue to have impact in Australia and beyond.

## Organisational Structure



# Coral Bell School of Asia Pacific Affairs



The Coral Bell School of Asia Pacific Affairs (Bell School) is a world-leading school of Asia-and-the-Pacific and international politics, society, strategy, security, and diplomacy.

The Bell School is named after Dr Coral Bell AO, one of Australia's leading intellectuals whose ideas on the big issues of war and peace, great power relationships, alliances, and global and regional security architecture made a direct and lasting impact on international policy debate. Dr Bell spent the final twenty-two years of her remarkable career in the School's Strategic and Defence Studies Centre.

The Bell School is one of four schools within the College of Asia and the Pacific (CAP) at The Australian National University. Formally established in 2010, it is home to four exceptional academic units, each of which brings distinct strengths to the Bell School's collective endeavours.

**The Department of International Relations (IR)** was the first of its kind in Australia. Over seven decades, it has established a reputation as one of the world's leading centres for the study of global politics and is known for its combination of theoretical innovation, ethical awareness, and regional expertise.

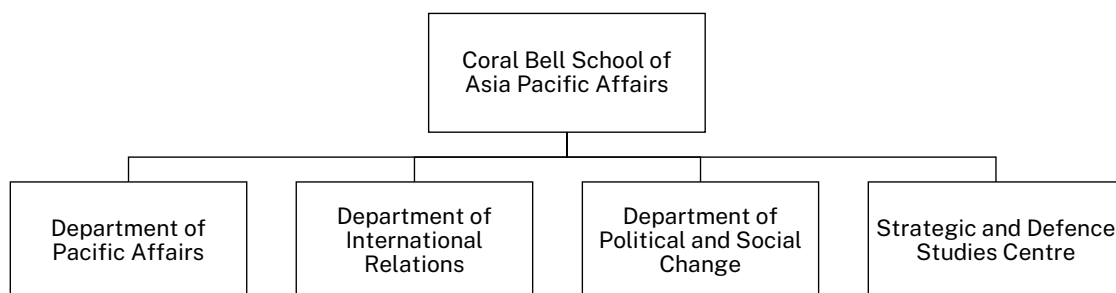
**The Strategic and Defence Studies Centre (SDSC)**, unique in its scholarly focus on the role of armed force in the international system, has long been a leading force in shaping Australian defence and strategic policy, and Australia's understanding of strategic and security developments in Asia and the Pacific.

**The Department of Political and Social Change (PSC)** is internationally renowned for its world-leading social science research expertise on the domestic politics and societies of Asia, especially China and Southeast Asia (with a particular focus on, and a long tradition of, research on Indonesian politics).

The greatest concentration of Pacific expertise in the world can be found in our **Department of Pacific Affairs (DPA)**, originally established as the 'State, Society and Governance in Melanesia' program. DPA is the leading international centre for applied multidisciplinary research on the Pacific.

The Bell School is a diverse and vibrant community whose scholars work at the highest levels across a range of disciplines, including international relations, political science, history, anthropology, human geography, and sociology. Our ability to work across these domains is one of the foundations of our distinctive contribution to The Australian National University.

## Organisational Structure



# Strategic and Defence Studies Centre

56 years after its founding, the Strategic and Defence Studies Centre (SDSC) at The Australian National University continues to play an integral role in shaping Australian strategic and defence policy and is deeply engaged with the changing geopolitical environment of Asia and the Pacific.

Established in 1966, the Centre is Australia's oldest and largest body of scholars dedicated to the analysis of the use of armed force in its political context. We provide Australia's defence and intelligence community, and those who aspire to join it, with insights to tackle the challenges of an ever-changing world.

The SDSC is home to influential scholars who actively contribute to research and policy advancements in the strategic and defence fields. Some of our noteworthy academics and scholars include Professor Evelyn Goh, the Shedden Professor of Strategic Policy Studies; Dr Amy King, recipient of one of four 2017 Westpac Research Fellowships and an awardee of an Australian Research Council Discovery Early Career Researcher Award; Professor Stephan Frühling, member of the external panel of experts on the 2016 Defence White Paper; and Professor John Blaxland, author of the 'Official History of ASIO' volumes and Former Director of the ANU Southeast Asia Institute. Our active emeritus faculty includes prolific historians such as Emeritus Professors David Horner and Joan Beaumont who are both Prime Minister's Literary Award recipients; as well as former senior Defence officials Professors Hugh White and Paul Dibb.

Within strategic studies, the Centre's core areas of expertise consists of three related research clusters: Military Studies, Australian Defence, and Asia-Pacific Security. The SDSC actively collaborates with external stakeholders in both industry and government, including the Australian Institute of International Affairs (AIIA), the Australian Command and Staff College, the Australian Security Intelligence Organisation (ASIO), the Australian Strategic Policy Institute (ASPI), the Department of Defence, the Department of Foreign Affairs and Trade (DFAT), the Institute for Regional Security (IFRS), the International Institute for Strategic Studies (IISS), the Lowy Institute for International Policy, the Australian War Memorial, Military History and Heritage Victoria (MHHV), the United States Studies Centre, and the US Department of Defense.

The SDSC offers an undergraduate program, the Bachelor of International Security Studies (BINSS), an honours program, and a Masters Program in Strategic Studies, and attracts outstanding students from domestic and international markets. Noteworthy alumni include Greg Moriarty, Secretary at the Department of Defence; Esther Sainsbury, Diplomat with the Department of Foreign Affairs and Trade, Australian Embassy Yangon Myanmar; and Dr Kalman Robertson, of the Australian Safeguards and Non-Proliferation Office.



# Professor and Head of the Strategic and Defence Studies Centre

The Head, Strategic and Defence Studies Centre will be a leader in the ongoing viability and success of the Centre, responsible for its operational management, research, and educational leadership and strategic direction.

## Role Statement

Directly accountable to the Director, Coral Bell School, the Head of the Strategic and Defence Studies Centre will:

- Provide strategic leadership to maximise the research and scholarly performance of the Centre, including encouraging and facilitating innovative research and education, acquiring grants and consultancies, and achieving high impact practice and policy outcomes by the Centre.
- Provide leadership and direction for the Centre to support the effective management of its financial, staffing and other resources.
- In consultation with the Director, Coral Bell School, develop a strategic plan for the Centre and ensure its effective integration in the overall School, College and University Strategic Plans.
- Facilitate engagement and interaction with key internal and external stakeholders (including government, public service, academia, and non-government organisation) to build the profile and fundraising capacity of the Centre.
- Support and promote a culture of innovative research-led education programs among all members of the Centre staff.
- Maintain and enhance the Centre's educational programs, including the undergraduate and postgraduate programs and ensure the quality of the curriculum and delivery of these programs.
- Maintain and enhance workplace health and safety and ensure the development of a sustained culture of best practice in such matters, including providing leadership to ensure continual improvement of the health and safety agenda within the Centre.
- Personally, maintain high quality research performance, including strong publication output, supervision of postgraduate student research, acquisition of external research funding and where relevant achievement of high impact practice and or policy outcomes.
- Provide advice to the School Director and contribute to College/University strategic matters as requested.

# Selection criteria

## Level E (Professor)

The Professor is expected to exercise a special responsibility in providing leadership and in fostering excellence in research, teaching, professional activities and policy development within the Strategic & Defence Studies Centre, as well as more broadly within the School, College, the University and within the community, both scholarly and general.

1. PhD in a relevant discipline with a distinguished record of scholarly research, publication and policy leadership and impact, as evidenced by an internationally recognised publication record and success in attracting research funding.
2. Demonstrated experience in the provision of strategic planning, management and leadership within a high-profile research environment, which may include management of research programs and undergraduate and /or postgraduate teaching programs.
3. Proven record of effective engagement in public and policy debates in relation to Asia and the Pacific strategic issues and developments
4. Proven track record of contribution to outreach activities, including engagement with policy communities and provision of policy-relevant advice.
5. A capacity to consult extensively and communicate effectively within the Centre and School, within ANU, and with external bodies to secure positive outcomes for the Centre, School and University.
6. Highly developed interpersonal skills with the ability to work with and lead teams in a collegial fashion.
7. Demonstrated achievement in relation to incorporation of EO principles into strategic planning and the capacity to accept devolved responsibility for achievement of equity and diversity.

# How to apply

To submit an application for this role, please make sure that you upload the following documents to the online application portal:

1. A statement addressing the selection criteria outlined in this booklet. This should be no more than three pages.
2. A detailed CV.
3. Three referees including their email and phone contact details.  
Referees will only be contacted after prior consultation with the candidate.  
It is the candidate's responsibility to ensure referees are willing to provide reports when contacted.

---

For a confidential discussion regarding this role and the application process, please contact:

**Professor Toni Erskine**  
Director, Coral Bell School  
of Asia Pacific Affairs

E: [toni.erskine@anu.edu.au](mailto:toni.erskine@anu.edu.au)  
T: +61 2 6125 1233

Anticipated timeframe for the appointment process.

Applications close:  
**Sunday, 18 September 2022**

Shortlisting of candidates:  
**Late September 2022**

Initial Interviews:  
**Mid October 2022**  
(via Zoom)

Final Interviews  
**November 2022**  
(in Canberra ACT)

References and negotiation:  
Following interviews.

ANU reserves the right to appoint by invitation.

The successful candidate must have rights to live and work in this country and will be required to undergo a background check during the recruitment process.

An offer of employment is conditional on satisfactory results.







# The power of surprise

Canberra has the power to surprise, with its abundance of food, wine, art, culture, ideas and innovation. As an evolving city, this element of surprise continues even once you've made Canberra your home, with new developments, events and opportunities constantly emerging to keep life interesting.

## About Canberra

Canberra is a planned city – designed to maximise opportunities for work and play. As our Nation's Capital, big ideas emerge, circulate and grow here, thanks to unique links between leading thinkers in business, government, education and research. Our dynamic economy, highly educated workforce and an innovative business culture provide career and business opportunities unique to Canberra.

Our healthy appetite for outdoor pursuits is enhanced by the natural resources available: from sailing on Lake Burley Griffin, mountain biking at the world class Mount Stromlo facility or heading up to the Snowy Mountains for a day on the slopes. We are also home to most of Australia's major national cultural institutions, with whom the University has a close relationship, and a cultural calendar overflowing with international exhibitions, arts festivals and entertainment.

## Where to Live

The architects who designed Canberra, Walter and Marion Burley Griffin, had a master plan to create a series of 'satellite cities' separated by nature reserves and connected with major roads. Today their vision lives on, with Canberra divided into seven distinct regions of residential suburbs, each serviced by a central business district.

The resulting benefits are that commuting times are short. Employment hubs are virtually on your doorstep and recreational facilities are within walking distance, regardless of where you live.

Find information on each district and the suburbs contained within them through the ['Explore Canberra' map](#).

## Education and Childcare

Canberra nurtures the pursuit of dreams from the ground up. Here families are provided with the supportive services, facilities and environments to raise happy, inspired and resilient children. Community is crucial for the support of families and Canberra has a number of ways to connect families with each other through playgroups, family events and activities.

Find out more about Canberra's excellent childcare, preschool and school system [here](#).



Australian  
National  
University

## Contact us

**Professor Toni Erskine**

Director

Coral Bell School of Asia Pacific Affairs

T +61 2 6125 1233

E [Toni.Erskine@anu.edu.au](mailto:Toni.Erskine@anu.edu.au)



[facebook.com/ANUbellschool](https://facebook.com/ANUbellschool)



[twitter.com/ANUBellSchool](https://twitter.com/ANUBellSchool)



[instagram.com/anu\\_bellschool](https://instagram.com/anu_bellschool)



[youtube.com/ANUCoralBellSchool](https://youtube.com/ANUCoralBellSchool)