



THE UNIVERSITY OF
**WESTERN
AUSTRALIA**

Appointment of

Director, Life Sciences Innovation Hub

Information for Candidates



Thank you for your
interest in the position
of Director, Life
Sciences Innovation
Hub at The University
of Western Australia
(UWA).

Welcome

Thank you for your interest in the position of Director, Life Sciences Innovation Hub. Western Australia's Life Sciences Innovation Hub is a partnership led by UWA along with MTPConnect and the WA State Government, which provides numerous opportunities for the nation and state, as we leverage the connections of the WA Government and MTPConnect nationally.

It's an exciting opportunity to work with an institution at the most exciting and dynamic time in its history. With The University's Vision 2030 identifying the best ways to build on our strong reputation for excellence in teaching, learning and research, UWA is set to become an energetic centre for innovation, inspiring future students, staff and stakeholders alike to make a global impact.

Joining UWA will put you at the forefront of excellence, where you can challenge convention and make the most of unlimited possibilities. It's not just one of the top 100 universities in the world, it's an environment in which you can make a real difference – and encourage others to do the same.

We offer access to an exceptional support network committed to creating change, from membership in the Group of Eight – a coalition of leading Australian universities – to colleagues who are academic leaders in the broadest sense, having established international reputations as outstanding teachers and researchers.

We look forward to hearing from like-minded candidates.



Professor Dawn Freshwater
Vice-Chancellor



The University of Western Australia

At UWA, you can work alongside dynamic and forward-thinking colleagues who, like you, are determined to challenge convention and drive innovation.

The University is in the top 100 universities in the world and is one of Australia's most respected research institutions. We operate more than 130 research and training centres, and enjoy a broad range of successful industry partnerships. The strength of our research culture means we attract high levels of competitive funding, and receive roughly 80 per cent of all research funding to Western Australian universities each year.

UWA is 91st in the 2019 QS World University Rankings, climbing seven places in the last three years, and has maintained a perfect score of 100 in the International Faculty ratio (measuring the number of international staff per 100 faculty members). The Academic Ranking of World Universities 2018 places us 93rd, while the Times Higher Education (THE) World University Rankings rates us 134th globally. In the Good Universities Guide 2019 we gained a five-star rating in Student Retention, and maintained our five-star rating for Student-teacher Ratio and Student Demand.

At UWA, we help people make the most of the possibilities presented to them. We are a community driven by a desire to make the most of our collective potential and to contribute to the world's advancement. Join us and pursue your ambitions.

uwa.edu.au





Mission

To provide world class education, research and community engagement for the advancement of prosperity and welfare of our communities.



Vision

To become recognised as one of the world's top 50 global universities by 2050.

University governance and management

The University is governed by the Senate, comprising up to 17 members from a range of backgrounds including community, staff, students and graduates.

Chaired by the Chancellor, the Hon. Robert French, the key roles of the Senate are:

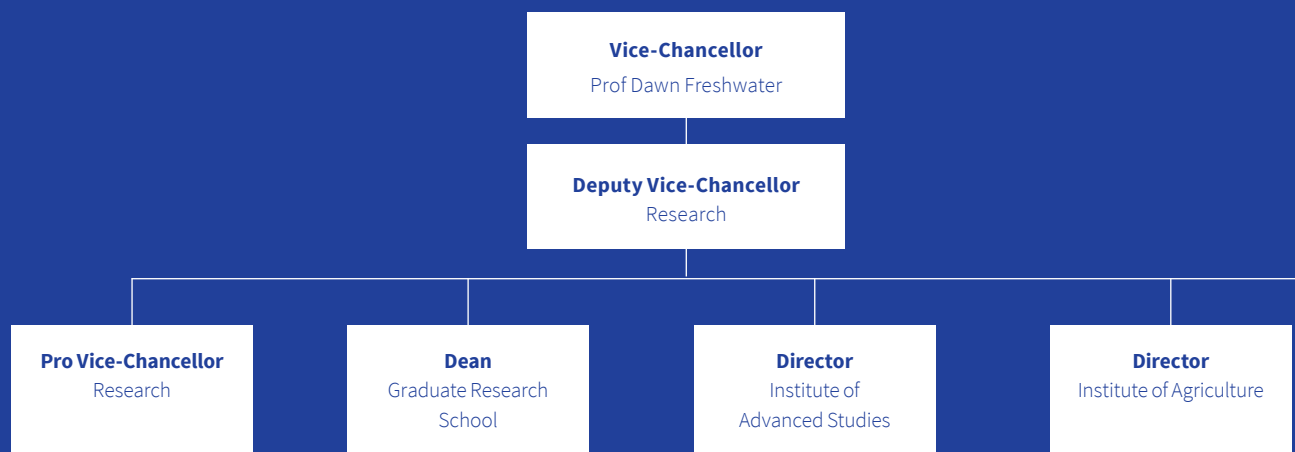
- providing a broad overview of strategic directions in the University
- overseeing corporate governance
- performance monitoring
- taking legislative responsibility
- supporting, guiding and monitoring the performance of the Vice-Chancellor

Key stats

Student enrolments 2017	24,327
Total staff (FTE) 2017	3,264
Research publications 2017	5,594



2018 Deputy Vice-Chancellor (Research) Structure



Key institutional networks

Group of Eight

The Group of Eight is a coalition of leading Australian universities that advocate intensive research and comprehensive general and professional education.

go8.edu.au

Matariki Network of Universities

This international group of seven universities across seven nations focuses on strong links between research and undergraduate teaching, promoting international best practice in research and education.

matarikinetwork.com

Worldwide Universities Network

The major issues facing our planet are so great that no single institution or organisation can address them alone. The WUN brings together world-leading academic partners to address these global challenges.

wun.ac.uk



Director
UWA Oceans Institute

Director
Office of Research
Enterprise

Director
Life Sciences
Innovation Hub

Director
Research
Infrastructure Centres

University Librarian
University Library



Western Australia Life Sciences Innovation Hub

The creation of a Western Australia Life Sciences Innovation Hub is bringing together researchers, government and industry partners to generate new business opportunities in medicine, health, agriculture and biodiversity. The WA Government, MTPConnect and UWA are working towards the acceleration of medical and biotechnologies through the creation of this Life Sciences Innovation Hub, thereby establishing WA as a world leader in this area. UWA will be the lead university for the hub.

Western Australia has a strong heritage of successful medical training and research discoveries, as a result of its well-established medical research facilities, state-of-the-art infrastructure, and internationally-recognised capability in gene technologies such as phenomics. The WA Hub was launched in collaboration with the WA Government, MTPConnect and UWA in September 2018.



The establishment of the WA Life Sciences Innovation Hub aims to capitalise on the state's significant capability in innovative life sciences research by building on local capability strengths of cutting-edge research and innovation to grow competitiveness of products and services, and its ability to play a key role as a strategic launch pad for national growth and investment opportunities in the Australia's MTP sector.

The WA Hub, will run educational programs to support life sciences start-ups and innovation, working closely with local sector stakeholders to develop skills in product translation and commercialisation, and in attracting investment opportunities. The WA Hub will also ensure that the local sector is linked to major initiatives, programs and projects, and is focused on the growth priorities identified in MTPConnect's Sector Competitiveness Plan, including clinical trials and the development of pre-clinical expertise, and capability in precision medicine and regenerative medicine.

The WA Hub will provide support for life sciences start-ups and SMEs, and in directing international investment into Western Australia.

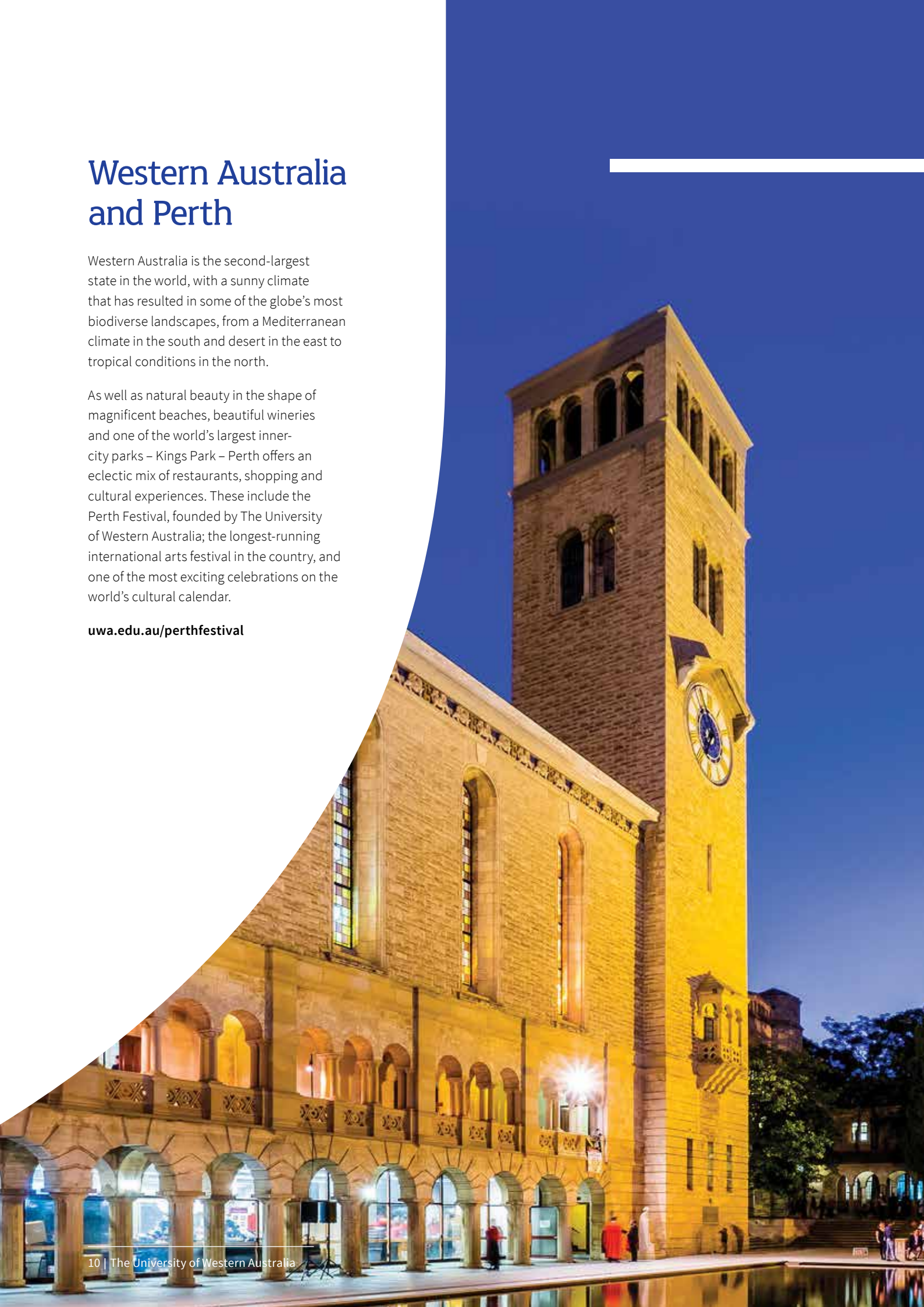


Western Australia and Perth

Western Australia is the second-largest state in the world, with a sunny climate that has resulted in some of the globe's most biodiverse landscapes, from a Mediterranean climate in the south and desert in the east to tropical conditions in the north.

As well as natural beauty in the shape of magnificent beaches, beautiful wineries and one of the world's largest inner-city parks – Kings Park – Perth offers an eclectic mix of restaurants, shopping and cultural experiences. These include the Perth Festival, founded by The University of Western Australia; the longest-running international arts festival in the country, and one of the most exciting celebrations on the world's cultural calendar.

uwa.edu.au/perthfestival



Role, key responsibilities and selection criteria

Role

This appointment will play a key role in the establishment of the WA Life Sciences Innovation Hub and will provide ongoing academic and strategic leadership for strengthening collaboration and driving innovation and commercialisation to result in a stronger life sciences industry in WA. The Director, Life Sciences Innovation Hub will work closely with the MTPConnect staff to ensure the accelerated growth of the medical technology, biotechnology and pharmaceutical sector in Western Australia.





Key responsibilities

- Set and manage the UWA strategy of the WA Life Sciences Innovation Hub
- Build and promote the academic and industry profile of WA as a leader in life sciences
- Develop and sustain strategic partnerships with a broad range of companies and other industry partners to support research and translation of that research
- Facilitate research and education partnerships with industry which lead to increased funding for the State
- Represent the vision and achieve outcomes of the Hub, working with senior representatives of Government, Industry, and other stakeholders
- Ensure that effective communication strategies and internal and external networks are in place to support the development and advancement of the Life Sciences Innovation Hub and relationship management with key stakeholders
- Help to drive the expansion of the State's life sciences sector by increasing sector collaboration, competitiveness, productivity and innovative capacity; and deliver sector wide impact

The creation of a Western Australia Life Sciences Innovation Hub is bringing together university researchers and industry partners to generate new business opportunities in medicine, health, agriculture and biodiversity.

Selection criteria

- Appropriate academic qualifications or significant experience with an outstanding record of performance in development activities relevant to this role
- Demonstrated outstanding leadership and management skills, including the capacity to implement change in a complex environment and to think strategically and implement plans
- Strength in influencing, negotiation and decision-making with an ability to resolve complex issues
- Outstanding communication, stakeholder and relationship management skills, and their application to establish and maintain effective internal and external networks
- Intellect, creativity and judgement: demonstrated original ideas; creative approach; sound judgement, including personal insight; capacity to encourage ideas, initiative and innovation in others
- Strategic thinking and planning: capacity to define and articulate strategy, priorities and imperatives; to understand strengths, weaknesses, opportunities, threats
- Stakeholder awareness: the ability to take account of all stakeholder requirements; and to influence, network, understand and operate effectively within diverse environments

Special requirements

- Undertake interstate and overseas travel
- Weekend work as required

Conditions of employment

An attractive and flexibly constructed remuneration package will be negotiated and will include:

- Employer contribution to superannuation of 17%
- Recreation leave of 20 working days per annum
- Long Service Leave
- Relocation assistance including airfares for the appointee and dependents (if applicable)



Applications

Thank you for your interest. If you wish to proceed, the following information will assist you with your application.

Your application must include the following:

- A covering letter or statement that clearly demonstrates the extent to which you satisfy each of the selection criteria
- A curriculum vitae that provides your personal details, qualifications and work history
- The names, email, mailing addresses and telephone contact details of three referees who may be contacted for a confidential report

Please note that your permission will be sought before referees are contacted.

The University of Western Australia provides visa sponsorship for international appointees.

Lodging your application

Applications must be submitted online at: jobs.uwa.edu.au/executive

The closing date for the submission of applications is Wednesday, 21 November 2018

Enquiries and requests for further information may be addressed in confidence to:

Professor Robyn Owens
Deputy Vice-Chancellor (Research)
Tel: +61 8 6488 2460
Email: dvcr@uwa.edu.au



The University of Western Australia
M053, 35 Stirling Highway
Perth WA 6009