



ROLE DESCRIPTION

Role Title:	CAMHS Clinician – Social Worker
Classification Code:	AHP1
LHN/ HN/ SAAS/ DHA:	Women's and Children's Health Network
Hospital/ Service/ Cluster	Women's and Children's Health Network
Division:	Child and Adolescent Mental Health Service (CAMHS)
Department/Section / Unit/ Ward:	Community Teams
Role reports to:	Professionally to Level 3 Social Worker Operationally to the Clinical Services Coordinator
Role Created/ Reviewed Date:	November 2020
Criminal History Clearance Requirements:	Working with Children Check (issued by DHS) National Police Check (issued by approved provider) If applicable - NDIS Worker Check (issued by NDIS Commission)
Immunisation Risk Category	<input type="checkbox"/> Category A (direct contact with blood or body substances) <input checked="" type="checkbox"/> Category B (indirect contact with blood or body substances)

ROLE CONTEXT

Primary Objective(s) of role:

Within the framework of the *National Mental Health Policy* and the *Standards for Mental Health Services* and in a manner consistent with the stated *Vision* and *Values* of the Women's and Children's Health Network (WCHN) the CAMHS Clinician provides clinical expertise for children, adolescents and their families with mental health issues. The CAMHS Therapist primarily provides direct expert care for an individual or group of clients and/or providing clinical leadership to multidisciplinary staff.

The CAMHS Clinician – Social Worker accepts accountability for the outcomes of clinical practice for children, adolescents and their families with mental health issues and for addressing inconsistencies between practice and policy. The CAMHS Clinician – Social Worker is operationally accountable to the Team Manager through the Clinical Services Coordinator, and professionally to the Senior Social Worker, for delivering specialist child and adolescent mental health care to consumers with complex needs. The CAMHS Clinician – Social Worker is responsible for ensuring optimal consumer care. The provision of assessment, education, counselling and group work is considered essential components of care which is directed towards the attainment of optimum consumer health and recovery. This involves consultation and liaison with other professional disciplines and non-governmental organisations. The CAMHS Clinician – Social Worker uses expert clinical knowledge, skills and experience in the application of direction, support, orientation and education to other staff and leads and participates in action research projects, quality improvement activities and policy development within the practice setting.

Direct Reports:

> Nil

Key Relationships/ Interactions:

Internal

- > Professional discipline specific accountability through the Chief of Discipline
- > Works collaboratively with other members of the CAMHS Team, and other staff within Child and Adolescent Mental Health Services
- > Work collaboratively with an array of services within the Women's and Children's Health network

External

- > Collaborates with consumers, carers and staff from a range of other community sectors

Challenges associated with Role:

Major challenges currently associated with the role include:

- > Provide high quality mental health services for children, adolescents and their families that are culturally sensitive or safe, flexible and meets the needs of a diverse population
- > Working in partnership with consumers, carers and external agencies within a developmental context
- > Effectively balancing the need to be pro-active with the requirement to respond quickly to urgent situations
- > Providing a range of specialist, evidence based interventions that address the mental health needs of children, young people and their families
- > Collaborating with other members of the multi-disciplinary team and key stakeholders to identify community needs, plan, implement and evaluate mental health services to address the mental health needs of children, youth and their families
- > Keeping up to date with professional standards of practice, implementing and monitoring evidence based practice and quality management initiatives consistent with organisational policies
- > Accepting responsibility for the maintenance of own knowledge and professional competence and contemporary practice

Delegations:

- > Nil

Resilience:

SA Health employees persevere to achieve goals, stay calm under pressure and are open to feedback.

Performance Development

The incumbent will be required to participate in the organisation's Performance Review & Development Program which will include a regular review of the incumbent's performance against the responsibilities and key result areas associated with their position and a requirement to demonstrate appropriate behaviours which reflect a commitment to SA Health values and strategic directions.

General Requirements:

Managers and staff are required to work in accordance with the Code of Ethics for South Australian Public Sector, Directives, Determinations and Guidelines, and legislative requirements including but not limited to:

- > *Work Health and Safety Act 2012 (SA)* and when relevant WHS Defined Officers must meet due

diligence requirements.

- > *Return to Work Act 2014 (SA)*, facilitating the recovery, maintenance or early return to work of employees with work related injury / illness.
- > Meet immunisation requirements as outlined by the *Immunisation for Health Care Workers in South Australia Policy Directive*.
- > Equal Employment Opportunities (including prevention of bullying, harassment and intimidation).
- > *Children and Young People (Safety) Act 2017 (SA)* 'Notification of Abuse or Neglect'.
- > Disability Discrimination.
- > *Independent Commissioner Against Corruption Act 2012 (SA)*.
- > *Information Privacy Principles Instruction*.
- > Relevant Awards, Enterprise Agreements, *Public Sector Act 2009*, *Health Care Act 2008* and the *SA Health (Health Care Act) Human Resources Manual*.
- > Relevant Australian Standards.
- > Duty to maintain confidentiality.
- > Smoke Free Workplace.
- > To value and respect the needs and contributions of SA Health Aboriginal staff and clients, and commit to the development of Aboriginal cultural competence across all SA Health practice and service delivery.
- > Applying the principles of the *South Australian Government's Risk Management Policy* to work as appropriate.
- > Health Practitioner Regulation National Law (South Australia) Act 2010
- > Mental Health Act 2009 (SA) and Regulations
- > Controlled Substances Act 1984 (SA) and Regulations
- > Professional Practice Standards and competencies consistent with area of practice as varied from time to time.
- > Code of Fair Information Practice.
- > SA Health WCHN policies, procedures and standards.
- > All employees required to complete timesheets must forward their timesheet to their manager, within two weeks from the period worked, to enable their manager to authorise that this is a true and accurate record of hours worked by the employee.
- > CAMHS Clinicians are required to work in accordance with the legislative and professional requirements including:
 - o Children's Protection Act 1993.
 - o Government of South Australia-Interagency Code of Practice 2001.
 - o Professional Practice Standards consistent with the area of practice.
 - o Health Practitioner Regulation National Law.
 - o Mental Health Act 2009.

The SA Health workforce contributes to the safety and quality of patient care by adhering to the South Australian Charter of Health Care Rights, understanding the intent of the National Safety and Quality Health Service Standards and participating in quality improvement activities as necessary.

Handling of Official Information:

By virtue of their duties, SA Health employees frequently access, otherwise deal with, and/or are aware of, information that needs to be treated as confidential.

SA Health employees will not access or attempt to access official information, including confidential patient information other than in connection with the performance by them of their duties and/or as authorised.

SA Health employees will not misuse information gained in their official capacity.

SA Health employees will maintain the integrity and security of official or confidential information for which they are responsible. Employees will also ensure that the privacy of individuals is maintained and will only release or disclose information in accordance with relevant legislation, industrial instruments, policy, or lawful and reasonable direction.

Zero Tolerance to Racism:

The Women's and Children's Health Network has zero tolerance to racism. The Network is committed to ensuring its staff, volunteers, consumers and visitors are able to work or access health services in an environment that is culturally safe and free from any form of racism or discrimination.

Our staff are supported to address any form of racism in all environments, in line with our Corporate Procedure: ***Zero Tolerance to Racism – Identifying, Responding, and Managing in the Workplace.***

White Ribbon:

SA Health has a position of zero tolerance towards men's violence against women in the workplace and the broader community. In accordance with this, the incumbent must at all times act in a manner that is non-threatening, courteous, and respectful and will comply with any instructions, policies, procedures or guidelines issued by SA Health regarding acceptable workplace behaviour.

Special Conditions:

- > It is mandatory that no person, whether or not already working in SA Health, may be appointed to a position in SA Health unless they have provided a satisfactory current Criminal and Relevant History Screening, as required by the SA Health Criminal and Relevant History Screening Policy Directive.
- > For appointment in a Prescribed Position under the Child Safety (Prohibited Persons) Act (2016), a current Working with Children Check (WWCC) is required from the Department for Human Services Screening Unit. For other positions, a satisfactory National Police Certificate (NPC) assessment is required.
- > For 'Prescribed Positions' under the Child Safety (Prohibited Persons) Act (2016), the individual's WWCCs must be renewed every 5 years from the date of issue; and for 'Approved Aged Care Provider Positions' every 3 years from date of issue as required by the Accountability Principles 2014 issued pursuant to the Aged Care Act 1997 (Cth).
- > Appointment is subject to **immunisation risk category requirements** (see page 1). There may be ongoing immunisation requirements that must be met.
- > As a state-wide service, WCHN employees may be required to undertake work at various locations in metropolitan Adelaide, and provide outreach to other parts of South Australia (the latter in consultation with the incumbent of the role).
- > Depending on work requirements the incumbent may be transferred to other locations across SA Health to perform work appropriate to classification, skills and capabilities either on a permanent or temporary basis subject to relevant provisions of the Public Sector Act 2009 for Public Sector employees or the
- > SA Health (Health Care Act) Human Resources Manual for Health Care Act employees.
- > The incumbent may be required to participate in Counter Disaster activities including attendance, as required, at training programs and exercises to develop the necessary skills required to participate in responses in the event of a disaster and/or major incident.
- > Some out of hours work will be required.
- > Preparedness to travel to country areas of South Australia (or interstate / or intrastate) by air or motor vehicle, including overnight stay is essential.
- > Must participate in clinical supervision and orientation program
- > Initially appointed to one location but may be required to work within other locations.
- > May be required to temporarily fill a higher position, appropriate to the skills and capacity of the incumbent.
- > Must have current drivers licence and be willing to drive.
- > Required to comply with requirements for Credentialing of Allied Health Professionals and support ongoing implementation.
- > Will be required to travel between locations and work within consumer and carer environments.
- > May be required to oversight the clinical management of other small or single discipline professional groups within CAMHS.

- > This Role Description provides an indication of the type of duties you will be engaged to perform. You may be lawfully directed to perform any duties that a person with your skills and abilities would reasonably be expected to perform.

Key Result Area and Responsibilities

Key Result Areas	Major Responsibilities
<p>Provide a Therapeutic/Clinical Assessment and Intervention Service to a client base consisting of children, adolescents and their families by:</p>	<ul style="list-style-type: none"> > Undertaking the assessment of, and the development of formulations for, both individuals and families, using knowledge and techniques available from a variety of therapeutic approaches, in order to determine the most appropriate interventions. > Implementing individual, family and/or other group therapies and other specific programs using a range of models and skills as a single practitioner and/or as part of a multidisciplinary approach. > Undertake discipline specific assessments as appropriate > Providing written reports in a clear, concise manner that is readily understood by both consumers and professionals. > Present at and/or contribute to multidisciplinary reviews
<p>Provide Consultancy regarding professional and other matters by:</p>	<ul style="list-style-type: none"> > Participating in the identification of mental health needs in the community and in the planning, execution and evaluation of programs to meet those needs.
<p>Contributing to Research and Evaluation Programs by:</p>	<ul style="list-style-type: none"> > Participating in the evaluation of clinical programs with a view to ensuring their adequacy, as well as identifying opportunities for new and improved services. > Maintaining statistical information of activities for planning research, service delivery and service development.
<p>Contribute to the Administration of the Regional Team by:</p>	<ul style="list-style-type: none"> > Fostering positive team relationships which promote job satisfaction. > Contributing as a member of the multi-disciplinary team to the development of policy and procedures at staff meetings and in other specified venues.
<p>Maintain a high level of professionalism and skills by:</p>	<ul style="list-style-type: none"> > Participating in approved professional development activities.

Knowledge, Skills and Experience

ESSENTIAL MINIMUM REQUIREMENTS

Educational/Vocational Qualifications

- > Appropriate Degree or equivalent qualification which gives eligibility for full membership of the Australian Association of Social Workers

Personal Abilities/Aptitudes/Skills:

- > Communicate and work with other professionals, facilitate group functions and work as a team member.
- > Work with a high degree of responsibility and supervision and direction commensurate with experience.
- > Communicate clearly in both written and verbal forms.
- > Demonstrate a commitment to the principles of social justice.
- > Demonstrate a commitment to the development of personal and professional skills.

Experience

- > Demonstrated ability to implement clinical assessments and interventions of a complex nature in relation to children and adolescents experiencing mental health issues, and their families using a range of theoretical models.
- > Developing, designing, implementing and evaluating preventative and/or therapeutic programs.
- > Working in a multi-disciplinary team.
- > Liaising with other agencies and professional groups.

Knowledge

- > Demonstrated knowledge of the theory and practice of clinical work within the social work, including group work.
- > Knowledge of developmental theory.
- > Knowledge of a variety of assessment and intervention models for working with children, adolescent and families.
- > Knowledge of the wider system and the relationship between social contexts and mental health.
- > Knowledge of the impact of government policy affecting the area of child, adolescent and family health and welfare services.

DESIRABLE CHARACTERISTICS

Educational/Vocational Qualifications

- > Experience in the treatment and management of complex child and adolescent mental health issues.
- > Experience providing clinical services to vulnerable populations
- > Experience co working with cultural consultants
- > Active involvement in professional organisations.
- > Experience of qualitative/quantitative evaluation outcome measures or programs.
- > Group work experience

Personal Abilities/Aptitudes/Skills

- > Knowledge of child protection legislation
- > Knowledge of transcultural/culturally safe/secure practice.

Experience

- > Further clinical training relevant to the goals of the organisation e.g. family therapy, group therapy.
- > Further professionally relevant post graduate qualifications
- > Preparedness to work towards recognition by the AASW as an Accredited Mental Health Social Worker

Organisational Context

Organisational Overview:

Our mission at SA Health is to lead and deliver a comprehensive and sustainable health system that aims to ensure healthier, longer and better lives for all South Australians. We will achieve our objectives by strengthening primary health care, enhancing hospital care, reforming mental health care and improving the health of Aboriginal people.

SA Health is committed to a health system that produces positive health outcomes by focusing on health promotion, illness prevention and early intervention. We will work with other government agencies and the community to address the environmental, socioeconomic, biological and behavioural determinants of health, and to achieve equitable health outcomes for all South Australians

Our Legal Entities:

SA Health is the brand name for the health portfolio of services and agencies responsible to the Minister for Health and Wellbeing.

The legal entities include but are not limited to Department for Health and Wellbeing, Central Adelaide Local Health Network, Northern Adelaide Local Health Network, Southern Adelaide Local Health Network, Women's and Children's Health Network, Country Health SA Local Health Network and SA Ambulance Service.

SA Health Challenges:

The health system is facing the challenges of an ageing population, increased incidence of chronic disease, workforce shortages, and ageing infrastructure. The SA Health Care Plan has been developed to meet these challenges and ensure South Australian's have access to the best available health care in hospitals, health care centres and through GPs and other providers.

Health Network/ Division/ Department:

The Women's and Children's Health Network (WCHN) was established to promote, maintain and restore the health of women, children and young people in South Australia. The Service plans, develops and coordinates health services as part of an integrated health system.

The Women's and Children's Health Network efficiently conducts and manages, within its identified resources, health services for children, young people and women, including:

- > Specialist hospital services
- > Primary health care and population health programs
- > Integrated community care service
- > Services to address the health and wellbeing of particular populations, including Aboriginal Health programs
- > Education and training programs
- > Research

Division/Branch

Child Adolescent Mental Health Service (CAMHS) is the state-wide child and adolescent mental health service auspiced by the WCHN. CAMHS provides specialist mental health services for infants, children, young people predominantly up to the age of 16 years and their families, and women (and their children up to 3 years), who are experiencing mental health problems or severe emotional and behavioural disturbance.

The aim of CAMHS is to reduce the extent and severity of mental health problems in this client group in our community and inpatient services whilst promoting good mental health and delivering early intervention mental health programs to identified population groups.

Assessment and treatment services are provided by a range of clinicians who are specialised in child and adolescent mental health. These include mental health nurses, mental health nurse practitioners, psychiatrists, psychologists, social workers, occupational therapists, speech therapists, paediatricians, and psychotherapists.

Values

SA Health Values

The values of SA Health are used to indicate the type of conduct required by our employees and the conduct that our customers can expect from our health service:

- > We are committed to the values of integrity, respect and accountability.
- > We value care, excellence, innovation, creativity, leadership and equity in health care provision and health outcomes.
- > We demonstrate our values in our interactions with others in SA Health, the community, and those for whom we care.

Domestic and Family Violence

The WCHN recognises violence against women as a human rights issue that must be addressed in the workplace, and is committed to a zero tolerance policy towards violence against women in the workplace. Accordingly, employees must appropriately report and respond to any such acts in the workplace, and make available appropriate support to employees who may be experiencing violence in the community.

Code of Ethics

The *Code of Ethics for the South Australian Public Sector* provides an ethical framework for the public sector and applies to all public service employees:

- > Democratic Values - Helping the government, under the law to serve the people of South Australia.
- > Service, Respect and Courtesy - Serving the people of South Australia.
- > Honesty and Integrity- Acting at all times in such a way as to uphold the public trust.
- > Accountability- Holding ourselves accountable for everything we do.
- > Professional Conduct Standards- Exhibiting the highest standards of professional conduct.

The Code recognises that some public sector employees are also bound by codes of conduct relevant to their profession.

Code of Ethics

Approvals

Role Description Approval

I acknowledge that the role I currently occupy has the delegated authority to authorise this document.

Name:

Role Title:

Signature:

Date:

Role Acceptance

Incumbent Acceptance

I have read and understand the responsibilities associated with role, the role and organisational context and the values of SA Health as described within this document.

Name:

Signature:

Date:

Accountability – what does it mean for me?

Within WCHN everyone is accountable for their contribution to the safety and quality of care delivered to consumers.

Consumers

Consumers and their families participate as partners to the extent that they choose. These partnerships can be in their own care, and in organisational design and governance.

Staff including Contractors, Locums, Agency, Students and Volunteers

All staff (as described above) have a role in the delivery of safe, high quality care to consumers, and are expected to perform their roles with diligence; and with a person-centred approach to the best of their ability. It is the responsibility of all staff to raise concerns when it is recognised that something is not right. Safety and quality is the responsibility of all staff, at all levels and across all locations.

Clinicians

All clinicians are accountable for the provision of competent, consistent, timely, safe, reliable, contemporary and person centred care within a defined scope of practice.

Clinicians work in teams with professionals from a variety of disciplines based on mutual respect and clear communication, with an understanding of responsibilities, capabilities, constraints and each other's scope of practice.

All clinicians are responsible for providing care that is person centred, evidence based and which focuses on safety through minimising risk while achieving optimal outcomes for consumers. This is helped by participating in clinical governance, in WCHN health and safety forums, fostering a learning environment and supporting other clinicians to provide high quality services which are safe.

Clinicians are expected to speak up when there are concerns about safety so that these can be rectified and learnt from. Clinicians are accountable for their own individual professional practice, including maintaining currency of credentialing, registration and professional practice.

Managers

Managers are accountable for implementing systems and practices that support high quality clinical practice. Managers oversee, guide and direct staff by providing leadership and advice ensuring appropriate clinical governance, continuous quality improvement, and leading safety programs. Managers develop, implement and monitor performance indicators for the identification, management and reporting of risk. Managers implement the Clinical Governance Framework; Consumer Engagement Framework and the requirements of the National Safety & Quality Standards within their areas of responsibility. Managers are expected to demonstrate diligence and honesty in the management of public resources.

Managers organise, direct and manage the performance of staff to meet operational requirements; implement and promote evidence based standards and policies that are compliant with relevant, professional, industrial and legislative requirements. Managers engage with and listen to staff, and create an environment where staff feel able to speak up in relation to concerns about safety. Managers address concerns raised and provide regular, ongoing feedback in the interests of improving care and safety.

Executive/Divisional Directors

Executive/Divisional Directors are accountable for embedding the Clinical Governance Framework; Consumer Engagement Framework and the requirements of the National Safety & Quality Standards into their areas of responsibility and providing assurance to the Executive and Board that these systems are in place and work effectively, all risks are known and mitigated and that staff understand their safety and quality responsibilities.

It is expected that those holding senior leadership positions will model the highest standards of ethical and professional behaviour.

WCHN Committees

WCHN Committees support Executive Directors to implement and evaluate organisational systems, support divisions to work together to identify and mitigate risk and continuously improve practice. They support the organisation to work as a single entity.

Chief Executive Officer

The Chief Executive has overall accountability for safety, care delivery, system governance and monitoring.

Board

The Board is accountable for governance, monitoring, compliance and ensuring the executive are discharging their responsibilities in managing the organisation.

Women's and Children's Health Network Strategy 2026

Four Strategic Priorities



Improved health and wellbeing of families and communities



Meaningful gains in Aboriginal health and wellbeing



Provide leading healthcare for women, babies, children and young people



Create one health network

Key Enablers

Effective communication

Consumer and community engagement

Culture and leadership

Engaged and capable workforce

Enabling technology

Research

Productive partnerships

Contemporary infrastructure

Financial sustainability

Continuous improvement and innovation

Mission To improve the health and wellbeing of families and communities by providing integrated care and support

Vision To be a leading and respected health network for women, babies, children, young people and their families

Values Compassion, Respect, Equity, Accountability, Together for Excellence

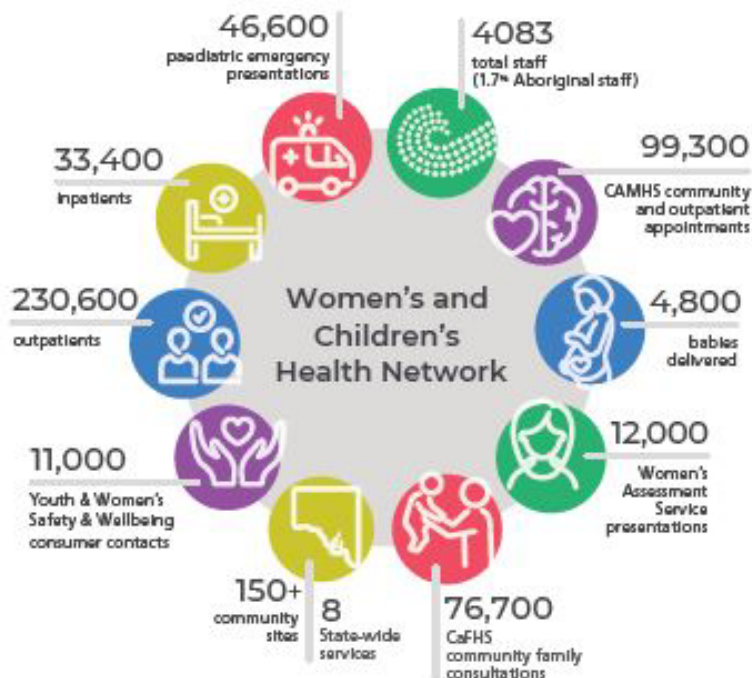
Our Story starts with our consumers and communities who are at the centre of everything that we do.

Our focus for the years ahead is to:

- Provide outstanding care and service
- Enhance our culture and leadership
- Design and deliver a new Women's and Children's Hospital
- Strengthen partnerships, expand innovation
- Through research, education and learning, inspire others, share specialist knowledge and deliver excellence in everything that we do
- Deliver an integrated WCHN

Our Way is underpinned by our agreed ways of working together that enable us as an organisation to:

- Share a common purpose and direction
- Use innovative and new ways to deliver our service
- Educate and support people to excel in the care that they give
- Grow and develop our current and future leaders
- Ensure that we have consistent behaviours and ways of working
- Implement processes and systems that are efficient and effective



State-wide services: Child and Family Health Service, Child and Adolescent Mental Health Service, Yarrow Place Rape and Sexual Assault Service, Disability Services, Child Protection Service, Metropolitan Youth Health, Women's Health Service, Women's Safety Strategy