



Charles Sturt  
University

## Position Description



## Speech Pathology Clinical Coordinator

### School of Community Health

### Faculty of Science

Classification	Level A/B
Delegation Band	Delegations and Authorisations Policy (see Section 3)
Nature of Employment	Continuing
Workplace Agreement	Charles Sturt University Enterprise Agreement
Date Last Reviewed	August 2020

### Faculty of Science

The Faculty of Science delivers flexible, innovative [teaching programs](#) which provide graduates with the skills and knowledge to build a career, advance their profession and contribute to their community. We currently have more than 9000 students and over 500 staff dedicated to advancing scientific knowledge.

We are a leader in strategic and applied [research](#) in a wide array of sciences. We enhance and extend knowledge, train and educate future researchers and provide scientific solutions to current challenges. We achieve this through ethical practice, professional collaborations, industry involvement and a commitment to continual improvement.

We also provide a range of health and other services to our regional communities through our [enterprise](#) activities.

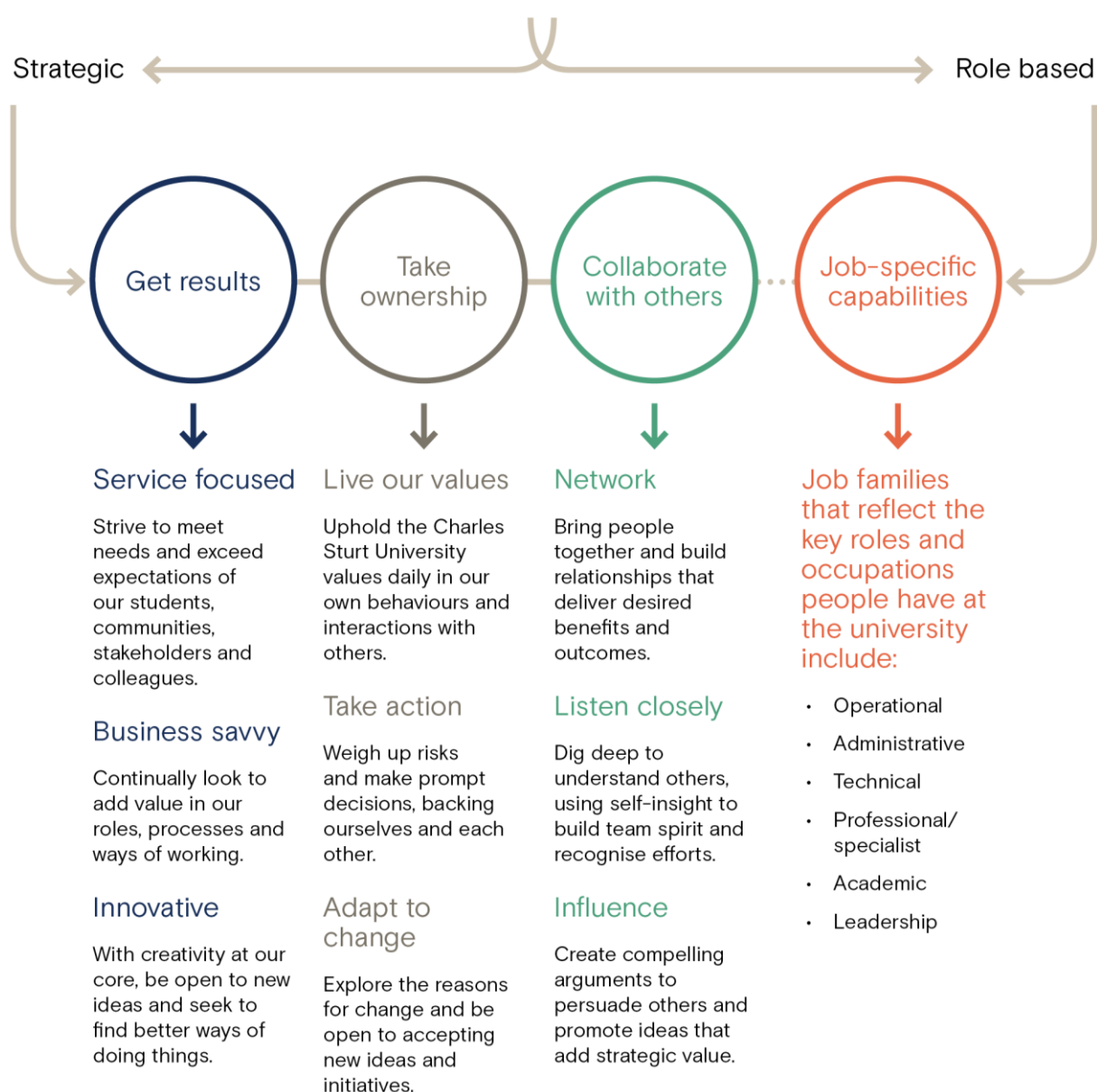
### School of Community Health

The School of Community Health has a diverse range of staff who work together in the pursuit of excellence in teaching, research and community engagement. The School is focused on five professional courses including health and rehabilitation science, occupational therapy, physiotherapy, podiatry and speech pathology.

Staff in the School of Community Health are committed to working with regional and rural communities to train and graduate future health professionals; we use research to find answers to community questions; and we work together to support people to become agents for positive change within their community.

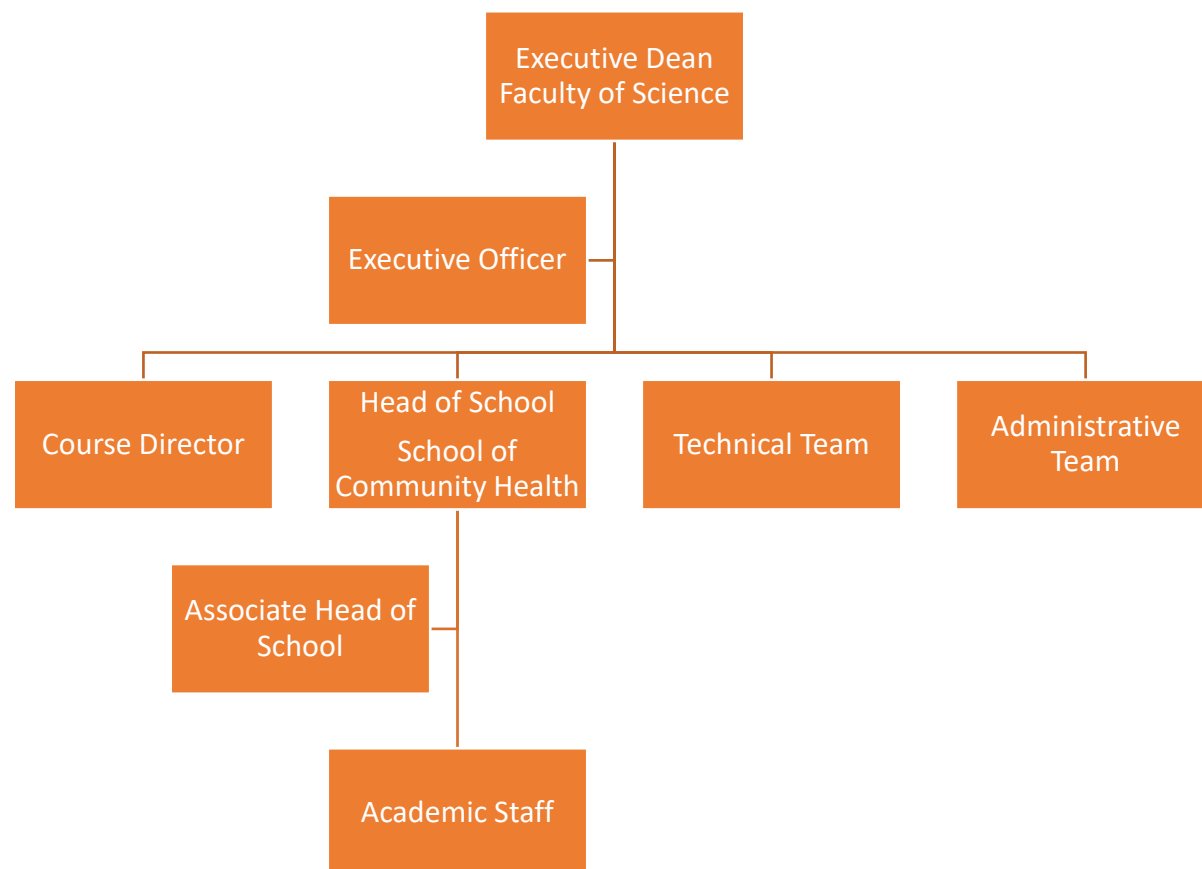


## Our University Values





## Organisational Chart



## Reporting relationship

**This position reports to:** Head of School, School of Community Health

**This position supervises:** Nil; however, will be required to coordinate other clinical education staff working in the Community Engagement and Wellness Centre (CEW).

## Key working relationships

- Head of School
- Associate Head of School
- Course Director
- Faculty and School Staff



## Position overview

The Speech Pathology Clinic Coordinator manages the student-led speech pathology on-campus and outreach services offered through the School of Community Health's Community Engagement and Wellness Centre (CEW). The Coordinator provides clinical education for Charles Sturt University's speech pathology students undertaking workplace learning placements and residential schools through the CEW; facilitates expansion of community and clinic-based services to support ongoing provision of workplace learning opportunities for speech pathology students; and, ensures the conduct of speech pathology students and staff in the clinic is consistent with compliance requirements for infection control principles, work health and safety, record keeping, quality assurance mechanisms and professional codes of conduct.

This position may also be offered as a Scholarly Teaching Fellow under Clause 30 of the Charles Sturt University Enterprise Agreement 2018-2021. The Lecturer will be appointed to a teaching research work function unless employed under the Scholarly Teaching Fellow condition where a teaching focussed appointment will be allocated.

Preference will be given to applicants with clinical and/or research experience in speech pathology practice with adult populations, private practice, telehealth, and/or clinical education.

## Principal responsibilities

- Actively contribute to collaborative processes to design, deliver and continually improve high quality clinical education for speech pathology students.
- Liaise with academic staff to ensure quality clinical education is integrated into the academic programs.
- Facilitate professional development for Charles Sturt clinical educators to ensure quality clinical education and assessment.
- Actively contribute to high performing teams with an outcome-oriented focus and the development of a respectful, trusting and collaborative working environment.
- Apply Charles Sturt University's learning and teaching methodologies, processes, technologies and tools to deliver high quality student-centred learning opportunities in speech pathology clinical education. Achieve excellence in clinical education in a range of delivery modes, including face-to-face and online, to facilitate the development of student speech pathology competencies consistent with Speech Pathology Australia Professional Standards and Charles Sturt University's Vision and Values.
- Develop and implement policies and procedures to ensure the smooth running of the speech pathology clinic (for example, facilitating client numbers, scheduling of students and clients, work health and safety requirements).
- Develop and maintain a sound and current knowledge and understanding of speech pathology through industry engagement and/or scholarly activities or similar, and maintain eligibility for membership for Speech Pathology Australia.
- Build networks and form relationships with internal and external stakeholders that bring direct benefit to the strategic work of the University, in terms of clinical education.
- Undertake larger projects that enhance clinical education and that are of particular benefit to the School and discipline.
- Actively contribute to governance, marketing and promotion, and administrative activities to facilitate the work of the Speech Pathology Clinic and Faculty/School.
- Other duties appropriate to the classification as required.



## Physical capabilities

The incumbent may be required to perform the following.

- Work in other environments beyond the school, such as other campuses, as well as possible car and air travel and work with a diverse range of staff, students and community members.
- On occasion drive a university vehicle distances up to 500km per day within the terms of the university's [Driver Safety Guidelines and Policy](#).
- Perform in an accurate and timely manner push/pull, reaching, grasping, fine manipulation tasks, including lifting items up to 10kg.
- Possess the physical ability to carry out shelving duties, such as frequent bending, reaching/stretching, squatting and repetitive lifting.



## Selection criteria - Level A

Applicants are expected to address the selection criteria when applying for this position.

### Essential

- A. An honours degree or higher, an extended professional degree, a postgraduate diploma appropriate to Speech Pathology, OR equivalent experience accreditation and professional standing AND eligibility for membership with Speech Pathology Australia as a Certified Practicing Speech Pathologist.
- B. Capacity and demonstrated commitment to deliver high quality student-centred clinical education.
- C. Knowledge and understanding of the discipline area and depth in clinical experience as a speech pathologist.
- D. Demonstrated effective communication and interpersonal skills.
- E. Evidence of sound administrative and organisational skills.
- F. Demonstrated ability to build strong internal and external partnerships, networks and relationships and to work both collaboratively and independently.
- G. Demonstrated capacity to utilise and embrace current and emerging technologies to achieve work objectives.

### Desirable

- H. Background in speech pathology practice with adult populations, telehealth, and/or clinical education.
- I. Private practice experience.



## Selection criteria - Level B

Applicants are expected to address the selection criteria when applying for this position.

### Essential

- A. Doctoral or Master degree relevant to speech pathology or equivalent experience, accreditation and professional standing AND eligibility for membership with Speech Pathology Australia as a Certified Practicing Speech Pathologist;
- B. Capacity and demonstrated commitment to deliver high quality student-centred clinical education
- C. Sound knowledge and understanding of the discipline area and proven excellence in clinical experience as a speech pathologist
- D. Demonstrated effective communication and interpersonal skills including influencing, negotiating, presenting, active listening and the giving and receiving of constructive feedback
- E. Evidence of sound administrative and organisational skills.
- F. Demonstrated ability to build strong internal and external partnerships, networks and relationships and to work both collaboratively and independently.
- G. Demonstrated capacity to utilise and embrace current and emerging technologies to achieve work objectives.

### Desirable

- H. Background in speech pathology practice with adult populations, telehealth, and/or clinical education.
- I. Private practice experience.



