



Department of Rural Health

Position Description

Position Number	0056025
Position	Associate Lecturer in Rural Mental Health Education
Classification	Level A
Salary	\$75,289 - \$102,163 p.a. (pro rata for part-time)
Superannuation	Employer contribution of 17%
Working hours	Full-time or part-time (0.5 – 1.0 FTE) (One full-time position or two part-time positions are available)
Basis of Employment	Fixed term to 31st December 2023
Location	Wangaratta region
Team	Going Rural Health, University Department of Rural Health
Line Manager	Lisa Bourke

CONTACT FOR ENQUIRIES ONLY

Lisa Bourke
Telephone: 03 5823 4519
Email: bourke@unimelb.edu.au
Please do not send your application to this contact

How to apply: Online applications are preferred.
Go to about.unimelb.edu.au/careers, under 'Job Search and Job Alerts', select the relevant option, then find the position by title or number

Position Summary

The Department of Rural Health is a rural health training program aimed at supporting, enhancing and increasing the recruitment, retention and quality of the rural health workforce in Victoria. This position is available in the University Department of Rural Health (UDRH) program which supports nursing and allied health student placements, provides education in Aboriginal Health, and undertakes rural health research. The UDRH seeks an educator to develop, support and teach into community-based rural mental health and wellbeing student placements for its newly funded project, Mental Health and Wellbeing for Remote and Aboriginal Victorians. The role works from an interprofessional, service learning model to support and educate students to provide rural mental health promotion, prevention and early intervention in grassroots community groups in more rural areas of northeast Victoria. The position is funded as part of a larger project across rural Victoria focusing on student placements in mental health and wellbeing.

We foster a values-based culture of innovation and creativity to enhance the research performance of the University and to achieve excellence in teaching and research outcomes.

We invest in developing the careers and wellbeing of our students and staff and expect all staff to live our values of Collaboration and Teamwork, Compassion, Respect, Integrity, Accountability.

We acknowledge and pay respect to the Traditional Owners of the lands upon which are campuses are situated

1. Key Responsibilities

1.1 TEACHING AND LEARNING

- Develop interprofessional service learning placements in wellbeing and mental health and wellbeing promotion, prevention and early intervention in rural communities east of Wangaratta.
- Provide student orientation and facilitate mental health and wellbeing education for students to prepare them to provide tailored mental health and wellbeing promotion, prevention and early intervention with specific groups in rural communities.
- Ensure placements meet the learning needs of students from a very broad range of health disciplines and education providers.
- Recruit Nursing and Allied Health students for mental health and wellbeing placements in very rural communities.
- Recruit and manage casual supervisors for specific student placements, train supervisors for service learning placements and ensure supervisors focus on student learning needs.
- Contribute to student teaching and building accessible educational resources, as required for the service learning model.
- Work with the Going Rural Health team to provide quality and supported student placements.

1.2 RESEARCH AND RESEARCH TRAINING

- Document models of student placements and interprofessional service learning models in rural communities.
- Ensure placements are evaluated by students, supervisors, participants and other stakeholders.
- Work with the project team to co-produce conference presentations, publications and reports about the placements developed and model implemented.

1.3 LEADERSHIP AND SERVICE

- Actively develop and maintain strong partnerships with community organisations, health services and community stakeholders in rural communities east of Wangaratta.
- Actively engage with universities, the project team and other stakeholders to ensure successful implementation of the Mental Health and Wellbeing for Remote and Aboriginal Victorians project.
- Actively participate in Department of Rural Health, including participation in staff forums, UDRH meetings, GRH meetings and Mental Health and Wellbeing for Remote and Aboriginal Victorians project team meetings.
- Provide regular reports on student placements to the Going Rural Health (GRH) student placement team and to the UDRH Director bi-annually for RHMT reporting.

- Promote placements to students, universities, supervisors, communities, government and other stakeholders as required.
- Other activities as identified by the UDRH Director and GRH Student Placement Manager.
- Occupational Health and Safety (OH&S) and Environmental Health and Safety (EH&S) responsibilities as outlined in section 4.

2. Selection Criteria

2.1 ESSENTIAL

- Tertiary qualification in Nursing, Allied Health, Community Development or similar discipline
- Demonstrated experience of developing partnerships with stakeholders in a rural community setting
- Experience of providing education in mental health and wellbeing at the tertiary level
- Experience of supporting and supervising student placements and practicums
- Knowledge of evidence and current research on rural workforce issues in Australia
- High-level interpersonal, written and verbal communication skills.

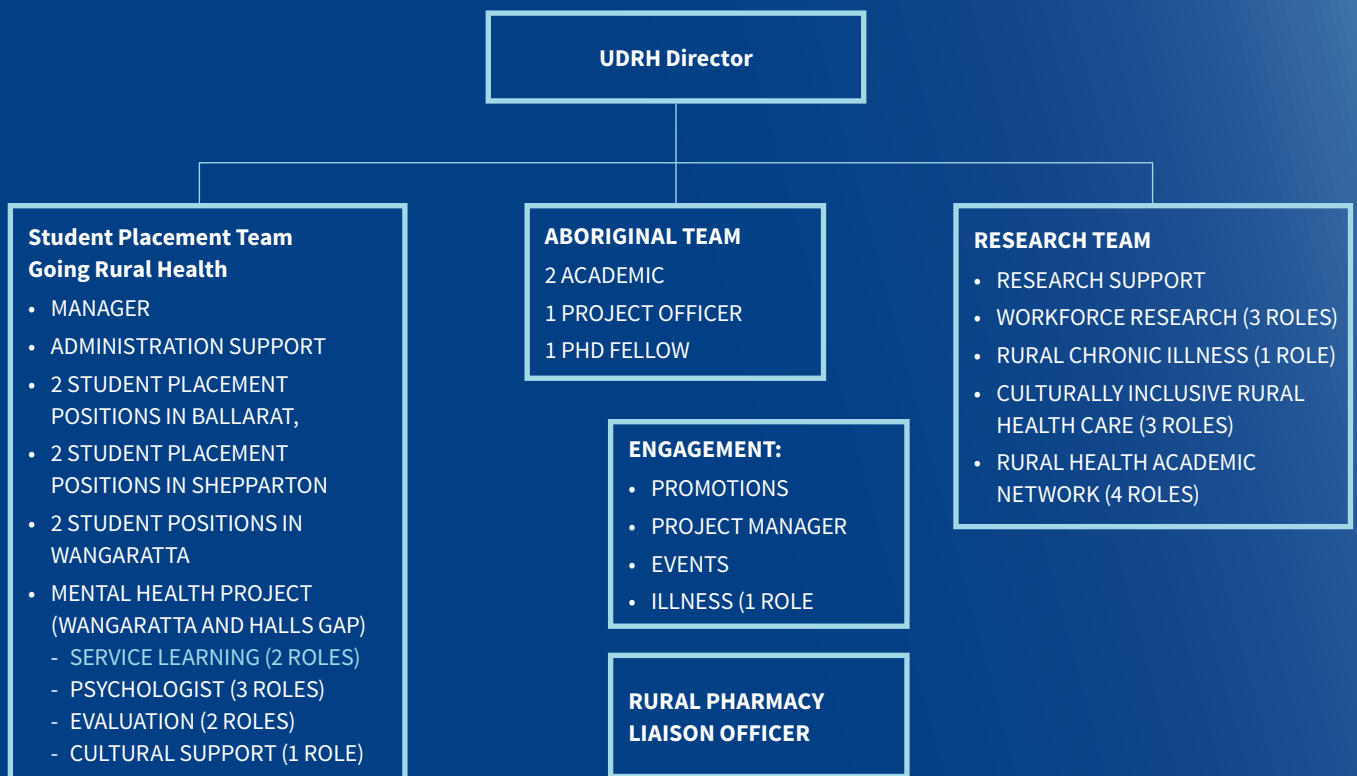
2.2 DESIRABLE

- Postgraduate qualifications in nursing, allied health or education
- Demonstrated competency working with Aboriginal and/or Torres Strait Islander people and communities in Australia
- Experience of service learning.

2.2 OTHER JOB RELATED INFORMATION

- Some travel is required for this role
- Occasional work out of ordinary hours, travel, etc.

Organisational Chart

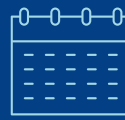


Benefits



FINANCIAL

COMPETITIVE SALARIES
17% EMPLOYER SUPERANNUATION CONTRIBUTIONS
SALARY PACKAGING
17.5% ANNUAL LEAVE LOADING



LEAVE

FLEXIBLE WORK ARRANGEMENTS
PRENATAL LEAVE
UP TO 24 WEEKS PAID PARENTAL LEAVE
ABILITY TO PURCHASE UP TO 8 ADDITIONAL WEEKS ANNUAL LEAVE PER YEAR



HEALTH AND WELLBEING

DISCOUNTED MEDICAL TREATMENT
CULTURALLY INCLUSIVE ENVIRONMENT
REWARDING OPPORTUNITIES TO POSITIVELY IMPACT THE HEALTH YOUR LOCAL COMMUNITY
FREE CONFIDENTIAL COUNSELLING SERVICES



ADDITIONAL BENEFITS

STAFF RECOGNITION PROGRAM
RELOCATION SUPPORT POLICY
25% OFF FULL-FEE GRADUATE COURSES AND COMMUNITY ACCESS PROGRAM
STUDY LEAVE POLICY
PET POLICY – BRING YOUR PETS INTO WORK!



Our Department

The Department of Rural Health is a department within the Melbourne Medical School at the University of Melbourne. The Department is based in Shepparton, Ballarat, Bendigo (in partnership with Monash University and La Trobe University) and Wangaratta and has associations with more than 40 smaller rural towns in Victoria.

The key purpose of the Department is to provide professional health education and research training in a rural context with an aim to increase the rural health workforce.

The Department works closely with the local community and healthcare partners to ensure that we remain relevant and connected. Our partnerships underpin our teaching and research. The Department of Rural Health is funded primarily by the Australian Government Department of Health's Rural Health Multidisciplinary Training (RHMT) Program. The aim of the RHMT program is to improve the recruitment and retention of health professionals in rural and remote Australia. The Department works towards this goal with various programs including: The Rural Clinical School, the University Department of Rural Health and The Goulburn Valley Regional Training Hub.

The Department also receives funding for other programs and research including the Centre for Excellence in Rural Sexual Health.



A diverse and highly relevant portfolio of training programs, including our redesigned Doctor of Medicine program and Rural Pathway.



Deep and engaged partnerships with health service providers across the communities we serve.



Active research environment with impact for rural health services and communities.



Opportunities for career progression, diverse roles and resourcing new activities.

Department of Rural Health



The Rural Clinical School (RCS):

Providing students with an excellent medical education and a rewarding rural experience.



Centre for Excellence in Rural Sexual Health (CERSH):

Improving sexual and reproductive health in the regions that we serve.



Goulburn Valley Regional Training Hub (GVRTH):

Providing support and education to medical students, interns and trainees to help create a sustainable future rural medical workforce.



Campuses

Shepparton, Ballarat, Bendigo and Wangaratta.



University Department of Rural Health (UDRH):

- **Going Rural Health (GRH):** Supporting allied health, nursing and health science students to complete rural clinical placements.
- **Aboriginal Health:** Providing education and research in Aboriginal Health with Aboriginal people.
- **Research:** Undertaking research with impact for rural communities in our region.

WORKING IN THESE AREAS TO SUPPORT LOCAL HEALTH SERVICES AND WORKFORCE

Note: not all programs cover all areas highlighted

Living and working on campus



SHEPPARTON

Shepparton offers a relaxed rural lifestyle with all the big city facilities. It's community is diverse and growing, boasting beautiful housing estates, a range of schooling options and significant sporting facilities and outdoor activities. The region is renowned as Australia's food bowl and is within easy driving distance to many popular destinations such as Echuca, Nagambie and Yarrawonga.

Living in Greater Shepparton | Great Things Happen Here

[Moving here - Greater Shepparton Council](#)



BALLARAT

Ballarat is one of Victoria's biggest regional centres, and one of the closest to Melbourne, the City of Ballarat continues to surge ahead, it's a well-kept secret that more than 2,000 people move here every year, now attracted by Ballarat's incredible services, housing, employment, tourism and events.

[Visit Ballarat - Where there is so much to be discovered](#)



BENDIGO

Bendigo is a vibrant contemporary regional centre, boasting beautiful streets created from one of the world's greatest gold rushes. Bendigo is jam-packed with creativity, great food, happening festivals and friendly locals.

[Explore Bendigo](#)



WANGARATTA

Wangaratta is a picturesque town with a vibrant CBD. It neighbours renowned wine regions such as Beechworth, King Valley and Glenrowan and is situated at the foothills of the major Victorian ski resorts.

[Home Visit Wangaratta](#)



Need further information?

General information about the University of Melbourne is available through its website at www.unimelb.edu.au

About the Department of Rural Health (DRH)
www.ruralhealth.unimelb.edu.au/

Department of Rural Health Brochure
https://medicine.unimelb.edu.au/data/assets/pdf_file

Faculty of Medicine, Dentistry and Health Sciences
mdhs.unimelb.edu.au

Melbourne Medical School
medicine.unimelb.edu.au

Equal Opportunity, Diversity, and Inclusion
about.unimelb.edu.au/careers/diversity-and-inclusion

Occupational Health and Safety
safety.unimelb.edu.au/people/community/responsibilities-of-personnel

Advancing Melbourne
about.unimelb.edu.au/strategy/advancing-melbourne

Governance
about.unimelb.edu.au/strategy/governance

Murrup Barak, Melbourne Institute for Indigenous Development
murrupbarak.unimelb.edu.au/employment/prospective-staff