



Charles Sturt
University

Position Description



Scholarly Teaching Fellow/ Lecturer in Physiotherapy

School of Community Health

Faculty of Science

Classification	Level B
Delegation Band	Delegations and Authorisations Policy (see Section 3)
Nature of Employment	Continuing
Workplace Agreement	Charles Sturt University Enterprise Agreement
Date Last Reviewed	February 2021

Faculty of Science

The Faculty of Science delivers flexible, innovative [teaching programs](#) which provide graduates with the skills and knowledge to build a career, advance their profession and contribute to their community. We currently have more than 9000 students and over 500 staff dedicated to advancing scientific knowledge.

We are a leader in strategic and applied [research](#) in a wide array of sciences. We enhance and extend knowledge, train and educate future researchers and provide scientific solutions to current challenges. We achieve this through ethical practice, professional collaborations, industry involvement and a commitment to continual improvement.

We also provide a range of health and other services to our regional communities through our [enterprise](#) activities.

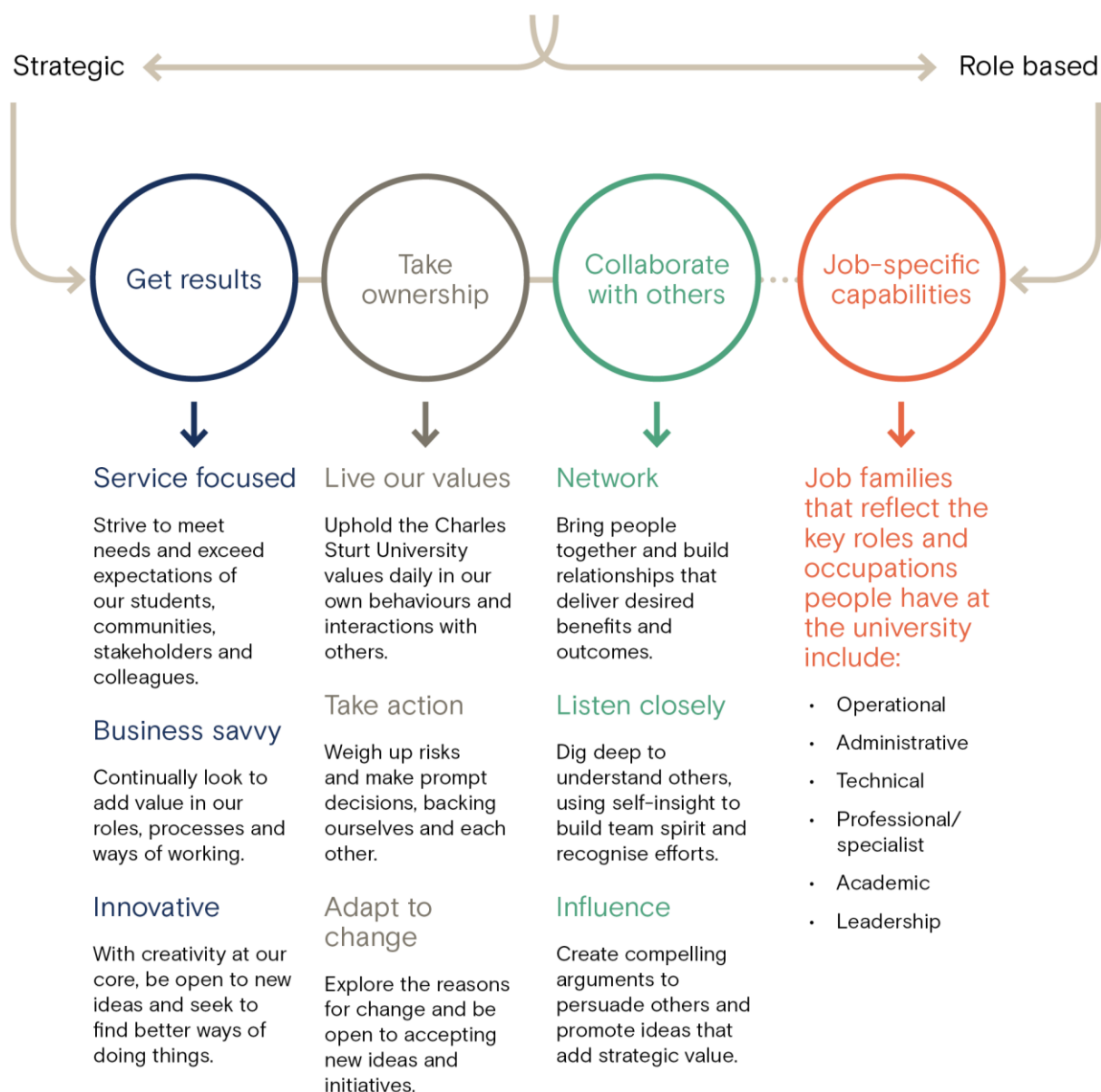
The School of Community Health

The School of Community Health has a diverse range of staff who work together in the pursuit of excellence in teaching, research and community engagement. The School is focused on five professional courses including health and rehabilitation science, occupational therapy, physiotherapy, podiatry and speech pathology.

Staff in the School of Community Health are committed to work with regional and rural communities to train and graduate future health professionals; we use research to find answers to community questions; and we work together to support people to become agents for positive change within their community.

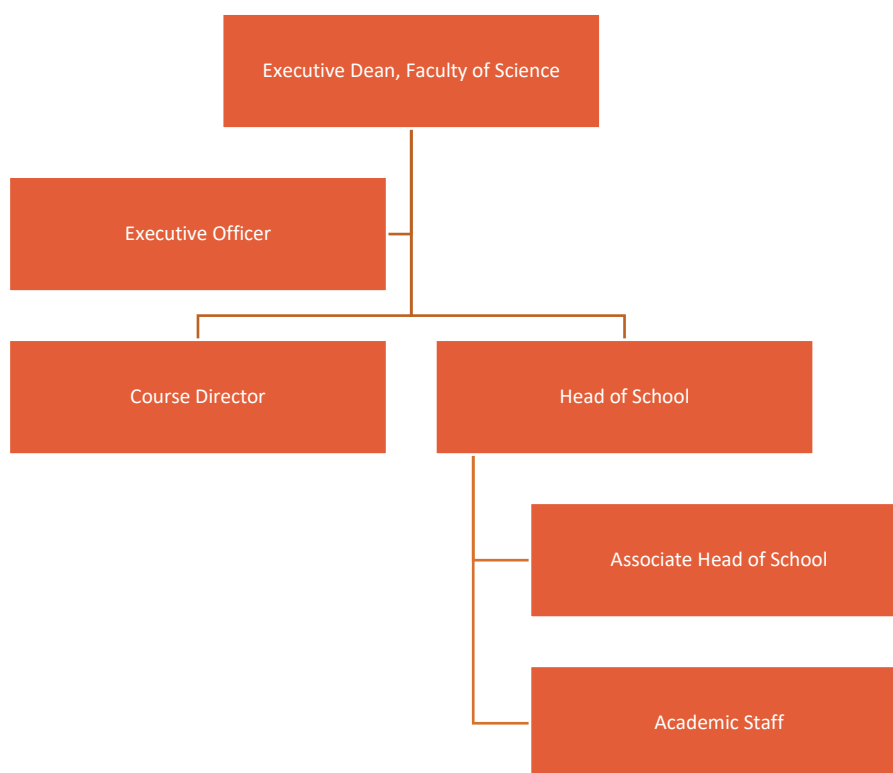


Our University Values





Organisational Chart



Reporting relationship

This position reports to: Head, School of Community Health

This position supervises: Nil

Key working relationships

- Head of School
- Associate Head of School
- Course Director
- Discipline Lead
- Faculty and School Staff



Position overview

The Scholarly Teaching Fellow/ Lecturer in Physiotherapy will actively engage in teaching, research, curriculum development and student engagement related to the physiotherapy course in the School of Community Health. The Scholarly Teaching Fellow/ Lecturer will be expected to use blended models of subject delivery in teaching students, liaise effectively with the stakeholders of the course, participate in the administration and ongoing curriculum development and progress an active research profile aligned to the strategic direction of the School.

The successful candidate must have substantial experience in musculoskeletal physiotherapy and orthopaedic (acute care) physiotherapy, a sound understanding of both public and private sector physiotherapy services, and capacity and willingness to contribute to securing and supporting workplace learning placements for physiotherapy students in both sectors, as part of the physiotherapy workplace learning team.

Principal responsibilities

- Apply CSU learning and teaching methodologies, processes, technologies and tools to deliver high quality student centred learning opportunities in the relevant discipline and as required to meet the teaching needs of the University. Achieve excellence in teaching in a range of delivery modes, which may include face to face and online teaching and assessment.
- Supervise Research Higher Degree and Honours students.
- Build strong professional relationships with students and provide timely and appropriate consultation and feedback.
- Actively contribute to collaborative processes to design, deliver and continually improve high quality courses and learning experiences for students including the giving and receiving of constructive feedback.
- Actively contribute to high performing multi disciplinary teams with an outcome focus and the development of a respectful, trusting and collaborative working environment.
- Provide leadership and management, as appropriate, in the convening, coordination and delivery of subjects and/or courses. This may include coordinating and/or leading other staff including casual academic staff.
- Proactively develop and foster relationships with a range of stakeholders including community, government departments, and professional bodies that bring direct benefit to the strategic work of the University, in terms of teaching, workplace learning, course profile and/or areas of research strength.
- Maintain a sound and current knowledge and understanding of physiotherapy through industry engagement and/or scholarly activities or similar.
- Conduct ethical, high quality research and contribute to knowledge through scholarship, publication and presentation and execute a research plan that aligns with CSU's Research Plan and objectives including pursuing funding opportunities.
- Identify and create opportunities for collaborative research projects with internal and external researchers and stakeholders.
- Continue to build a record of research/creative work which contributes to the development of the discipline whilst maintaining up-to-date research records within CSU's research database.



- Provide leadership and management, as appropriate, in the convening, coordination and delivery of subjects and/or courses. This may include coordinating and/or leading other staff including casual academic staff.
- Contribute to securing and supporting workplace learning placements for physiotherapy students in both public and private sectors, as part of the physiotherapy workplace learning team.
- Contribute to the development and improvement of policy and practice through involvement in professional/industry associations, accreditation authorities, conference organisations, advisory bodies, and national or international delegations, consistent with the University's Outside Professional Activities Policy.
- Actively contribute to the governance, marketing and promotion, and administrative activities to facilitate the work of the Faculty/School.
- Other duties appropriate to the classification as required

Physical capabilities

The incumbent may be required to perform the following.

- Work in other environments beyond the school, such as other campuses, as well as possible car and air travel and work with a diverse range of staff, students and community members.
- On occasion drive a university vehicle distances up to 500km per day within the terms of the university's [Driving Hours Guidelines and Policy](#).
- Perform in an accurate and timely manner push/pull, reaching, grasping, fine manipulation tasks, including lifting items up to 10kg.
- Possess the physical ability to carry out shelving duties, such as frequent bending, reaching/stretching, squatting and repetitive lifting.



Selection criteria

Applicants are expected to address the selection criteria when applying for this position.

Essential

- A. Doctoral or master qualification relevant to physiotherapy or equivalent accreditation and standing, AND eligibility for registration as a Physiotherapist with the Australian Health Practitioner Regulation Agency (AHPRA).
- B. Record of research/publication or professional activity relevant to the discipline area, which demonstrates a capacity to make an autonomous contribution.
- C. Sound substantial experience in musculoskeletal physiotherapy and orthopaedic (acute care) physiotherapy, a sound understanding of both public and private sector physiotherapy services, and ability to teach across areas.
- D. Capacity and willingness to contribute to and support workplace learning placements for physiotherapy students in both public and private sectors, as part of the physiotherapy workplace learning team.
- E. Sound knowledge and understanding of contemporary physiotherapy gained through industry experience and/or scholarly activities or similar, including physiotherapy practice in rural and regional areas.
- F. Demonstrated ability to contribute to course and subject design, and to deliver high quality student-centred learning and teaching at an undergraduate level that includes the capacity to incorporate new technologies and new approaches to teaching and learning.

Desirable

- G. Previous academic experience.

