

Deakin School of Architecture  
and Built Environment



RECRUITMENT

# ASSOCIATE PROFESSOR IN CONSTRUCTION MANAGEMENT

## CONTACT

Professor Anthony Mills

Head of School

School of Architecture and Built Environment

[anthony.mills@deakin.edu.au](mailto:anthony.mills@deakin.edu.au)

[deakin.edu.au/architecture-built-environment](https://deakin.edu.au/architecture-built-environment)



# ABOUT DEAKIN

Deakin's growing reputation is reflected in its rapid rise in international rankings; Deakin entered the prestigious Academic Ranking of World Universities for the first time in 2014 and now ranks an estimated 213 (AWRU 2017). Deakin is ranked 29 in the QS ranking of the world's top universities under 50 years. Ninety percent of Deakin's research was rated at or above world standards in the Australian Government's Excellence in Research for Australia (ERA).

Established in 1974, Deakin University was named after the leader of the Australian Federation movement and the nation's second Prime Minister, Alfred Deakin.

Deakin University has five campuses, one in Melbourne's eastern suburbs, two in the port city of Geelong and one in Warrnambool on the south-west coast of Victoria. Deakin's fastest growing campus is in the Cloud where over 14,000 students study predominantly online. All students, regardless of their campus or mode of study, benefit from Deakin's award-winning digital environment.

Deakin is proud of its inclusive and student-focussed culture and its reputation for using innovative digital solutions to provide an engaging and personalised learning experience. Deakin is committed to lifelong learning, providing students with choices about how, when and where learning occurs.

Deakin's four faculties offer courses across the arts, design, science, sport, nutrition, architecture, business, law, medicine, optometry, engineering, nursing, allied health, psychology and teaching.

With 58 000 students Deakin is one of Australia's largest universities and is ranked in the top 2 per cent of the world's universities in the major international rankings (ranked 29 in the QS ranking of the world's universities under 50 years).

As a Victorian university with a global impact, Deakin is translating its research into the commercial outcomes that will drive the innovation Australia's economy needs now and into the future. Research at Deakin focusses on innovation and robust partnerships with industry and business and it is building a

formidable international reputation in areas of emerging national social, economic and political priority in its core areas of health, carbon fibre, energy and cyber security. Deakin has integrated its research growth plan into its overall strategy of service, developing its base in advanced manufacturing, which is vital for the Geelong community and Information technology, which is strong in the surrounds of its Melbourne campus.

## OUR STRATEGY

Deakin's vision and mission is articulated in its strategic plan *LIVE the future: 2017-2020*. Through *LIVE the future*, Deakin aspires to be Australia's premier university in driving the digital frontier, enabling globally connected education for the jobs of the future, and research that makes a difference to the communities Deakin serves.

Informed by its Australian and Victorian context and engaged locally in the communities it serves, Deakin advances

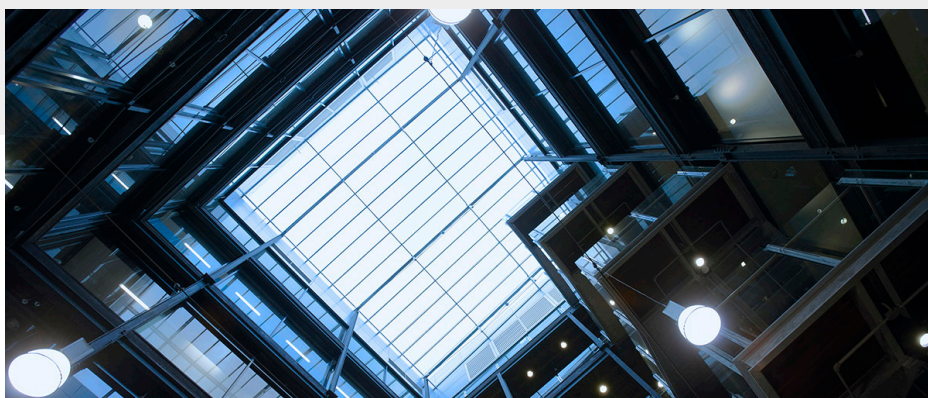
**Learning** – offering students a brilliant education where they are and where they want to go

**Ideas** – making a difference through world-class innovation and research

**Value** – strengthening our communities, enabling our partners and enhancing our enterprise

**Experience** – delighting our students, our alumni, our staff and our friends.

These four interconnecting elements form the acronym *LIVE*, and together they articulate the Deakin promise to its students, staff, alumni, partners and friends.



# FACULTY OF SCIENCE, ENGINEERING AND BUILT ENVIRONMENT

The Faculty of Science, Engineering and Built Environment at Deakin University places great emphasis on excellence in its teaching and learning, research and research training, community engagement, and staff empowerment. We pride ourselves on our national and international activities and the partnerships we have formed with industry, community, government, and the professions.

The Faculty of Science, Engineering and Built Environment consists of four schools, each with a multi-discipline mix of teaching and research offerings and a strong emphasis on research excellence that informs our teaching programs.

## SCHOOL OF ARCHITECTURE AND BUILT ENVIRONMENT

- Architecture
- Construction management
- Landscape architecture

## SCHOOL OF ENGINEERING

- Civil
- Electrical and electronics
- Electrical and renewable energy
- Engineering management
- Environmental engineering
- Mechanical
- Mechatronics
- Mechanical design

## SCHOOL OF INFORMATION TECHNOLOGY

- Computer science
- Creative technologies
- Cyber security
- Data analytics
- Software engineering
- Virtual reality

## SCHOOL OF LIFE AND ENVIRONMENTAL SCIENCES

- Biological science
- Biomedical science
- Biotechnology
- Fisheries and aquaculture
- Forensic science
- Environmental management and sustainability
- Marine biology
- Science
- Sustainable regional development
- Wildlife and conservation biology
- Zoology and animal science.

The Faculty Executive includes the Executive Dean, the four Heads of School, the four Associate Deans (Teaching and Learning; International and Partnerships; Research; International Research Engagement), the Director of Research Partnerships, and the Faculty General Manager. Collectively, this leadership team establishes and delivers on the Faculty's strategic activities.

## OUR MISSION

Our mission is to prepare graduates for the careers of the future by harnessing emerging technologies to facilitate borderless, personalised education, and by conducting research that informs our practice and impacts the communities we serve.

Our undergraduate, postgraduate and doctoral degrees are informed by scholarship and are relevant to both national and global contemporary issues. Flexible learning strategies provide a distinctive student experience. The faculty's teaching aims to be innovative, utilising face-to-face teaching and online technologies to ensure a high level of flexibility for the diverse learning needs of our students.

Our academic staff are engaged in both pure and applied research across their disciplines and are focused on issues which are of relevance to government, business and the community. To this end, we actively seek partnerships with relevant organisations, other like-minded universities and our alumni.

Our students come from diverse backgrounds and we value this diversity. Graduates are confident and competent in the use of online technology and are ready to make a significant contribution to the organisations they serve. They are highly valued by employers for both their knowledge and their graduate attributes.

We are committed to extending the boundaries of science, technology and design, achieving this through close relationships with professional associations, other education providers and universities, business, employers and government across Australia and internationally.



# DEAKIN SCHOOL OF ARCHITECTURE AND BUILT ENVIRONMENT

The School of Architecture and Built Environment operates at the intersection of art, design, technology and environmental science. Through teaching and learning frameworks, we develop and deliver creative professional expertise to inspire innovative and sustainable environments.

The School of Architecture and Built Environment, one of four schools in the Faculty of Science, Engineering and Built Environment, had its genesis in The Gordon in 1887 and has been part of Deakin University since 1977. More recently, the school has undergone an extensive renovation which has created new modern offices, gallery spaces and refurbished teaching and computer laboratories.

Over one thousand students now enrol in the school's courses. Students study predominantly at the Geelong Waterfront Campus, with a number of teaching units also available at the Melbourne Burwood Campus via the cloud (online).

Our courses are well designed and the units fully integrated, taking advantage of the opportunity for students of architecture, construction management and property and real estate to work together. This is particularly prevalent in our combined degrees. A keen understanding of each other's areas of endeavour is fundamental to excellent professional working relationships in future practice.

Our courses are accredited regularly by key professional groups such as RAIA, RICS, AACA, ARBV, AIB, AIQS, CIOB, PIA, AILA and the University itself.

Our postgraduate degrees enhance opportunities in the areas of planning, landscape architecture and construction management

Deakin University's School of Architecture and Built Environment students are knowledgeable, skilled and great team players and are highly sought-after for employment.

Our teaching is first class with many prize-winning and innovative lecturers who have developed teaching models specific to architecture and construction management learning, including e-learning support through CloudDeakin, experiential teaching strategies and collaborative problem solving.

The school's considerable research activity has been recognised by peer review with the awarding of ARC and OLT grants for projects in various fields. The number of refereed publications produced in the school is also high.

The school is primarily located at the Geelong Waterfront Campus in a beautiful, award-winning building and encompasses the highest standard of facilities, including computer laboratories and software, the interdisciplinary design environments for engineering and architecture laboratories, well equipped workshop and a large studio space with 24 hour access for students and staff.





# APPOINTMENT OF ASSOCIATE PROFESSOR IN CONSTRUCTION MANAGEMENT

The Associate Professor in Construction Management will be responsible for research, publishing and teaching in the area of construction technology, or construction management or construction economics.

## TEACHING AND RESEARCH LEVEL D

Level D members of staff typically perform these duties at the following levels:

### RESEARCH AND SCHOLARSHIP

- Recognition as an authority at the national level and an emerging reputation at the international level in research and scholarship, through publication or exhibition in high quality and high impact outlets
- Providing intellectual leadership within their specific areas of research, scholarship or creative activity, including emerging recognition as a public intellectual
- Contributing to the leadership of major research projects, including internal and external collaboration to create new insights and opportunities
- Creating and sustaining research collaborations and partnerships which have demonstrable outcomes
- Contributing to the leadership of research evaluation and assessment activities (e.g. competitive grant assessment, contributing to Editorial Boards, ERA panels)
- Contributing to the leadership of successful development of significant international research programs or partnerships
- Mentoring early career researchers
- Contributing to the leadership, supervision, management and timely completion of HDR students, including advising and improving on research excellence, career development and candidature management
- Promulgating and promoting a culture of research excellence in the University, including mentoring colleagues
- Providing leadership in research and scholarship through roles such as Associate Dean
- Demonstrating the successful application of scholarly and research expertise to innovation and invention, with appropriate involvement in the commercialisation of outcomes

### LEARNING AND TEACHING

- Demonstrating distinguished scholarly learning and teaching across all levels and modes (including for example in the cloud) at the national level, with evidence of an emerging international reputation
- Contributing to the leadership of the moderation and maintenance of academic standards, and the development of course and unit curriculum that exemplifies Deakin's curriculum framework, and meets external requirements such as the Higher Education Standards Framework and professional accreditation
- Researching and publishing in learning and teaching, including testing the effectiveness of innovations designed to improve student and graduate outcomes including graduate employment
- Leading, designing and implementing best practice assessment and evidence of student learning outcomes at Unit and Course level, and leading assessment panels
- Counselling and mentoring students, including referring students to University services
- Providing leadership in teaching and learning through roles such as Associate Dean, Course Director of high enrolling courses or interdisciplinary programs

### SERVICE

- Contributing to the leadership towards the implementation of the University's Strategic Agenda
- Leading the recruitment, mentorship and development of midcareer staff
- Building and leading effective high performing teams
- Initiating and leading projects within or on behalf of the University
- Leading and implementing external partnerships
- Playing a leading role in high level University or Faculty committees
- Undertaking leadership roles in industry
- Representing the University at significant academic, professional and civic forums
- Initiating and leading significant community engagement activities
- Providing leadership in teaching and learning through roles such as Associate Dean, Course Director of high enrolling courses or interdisciplinary programs



## ORGANISATIONAL CONTEXT

The Associate Professor in Construction Management will report to the Head of School.

The position may also take direction from Associate Heads of School

## ORGANISATIONAL RELATIONSHIPS

The appointee will be actively involved in research, teaching and service related activity.

The appointee will contribute to consulting, industry partnerships and professional activities.

The appointee may interact with other staff within the School and the Faculty, their peers in other universities, both nationally and internationally, and with community, professional and industry organisations. The appointee will liaise with students at all levels.

## POSITION LOCATION

This position is located at Geelong Waterfront Campus

## PROBATIONARY PERIOD

A continuing academic staff member will normally be required to serve a probation period of 36 months.

## THE SUCCESSFUL CANDIDATE – ESSENTIAL SELECTION CRITERIA

### Qualifications

- PhD in Construction Management or a relevant field, or a relevant post graduate qualification and experience in construction management.

### Experience, Knowledge and Skills

#### Research

- Successful record of research and publications in an area aligned with the School focus on 'Integral Design Futures'.
- Significant experience in supervising research students in construction.
- Demonstrated experience of leading a research team with a scholarly publication record based on research and practice.
- Successful track record of attracting nationally competitive or industry research funding.

#### Teaching

- Demonstrated capacity to lead teaching teams in the area of construction management.
- Demonstrated ability to develop and administer assessment regimes and provide feedback that fosters independent learning.
- Experience in developing curricula and resources that reflect an understanding of construction management.
- Knowledge of multi-literacies and experience in teaching effectively in a technology-enhanced contemporary higher education environment.

### Other

- Demonstrated ability to lead partnerships with professional associations in the field of construction management with other education institutions and industry.
- Demonstrated commitment to Equal Opportunity principles and practices, and Occupational Health and Safety.

### Personal Qualities

- Demonstrated personal qualities of leadership, innovation and high motivation.
- Interpersonal skills that support the ability to establish and maintain highly effective working relationships with a diverse range of people including students, the staff of the Faculty and School and with other members of the University.
- Ability to adapt to changes in the environment and effectively meets new challenges.
- Commitment to the University's Mission, Core Commitments and Values which include - excellence, academic freedom, collegiality, continuous improvement, ethical behaviour, accountability and environmental responsibility.

## PERFORMANCE EXPECTATIONS

Annual performance objectives and expected outcomes will be defined for this role in accordance with the Minimum Standards and Typical Duties for Academic Levels (MSTDALs) and Faculty Research Expectation Models (FREMs). Specific duties will be allocated with reference to the applicable Workload Allocation Model (WAM). These documents are updated from time to time and are available on request.



# APPOINTMENT PROCESS AND HOW TO APPLY

## APPLICATION

Thank you for your interest in the position of Associate Professor in Construction Management

## HOW TO APPLY

Please apply online via:

[deakin.edu.au/about-deakin/careers-at-deakin](https://deakin.edu.au/about-deakin/careers-at-deakin)

Include cover letter, curriculum vitae and a response to the Selection Criteria.

Please quote reference number:  
492528

## SUPPORT FOR YOUR APPLICATION

All enquiries will be confidential and should be directed to:

Professor Anthony Mills  
Head of School, School of Architecture and Built Environment

[anthony.mills@deakin.edu.au](mailto:anthony.mills@deakin.edu.au)

## CLOSING DATE FOR APPLICATIONS

Sunday 3 February 2019

## INTERVIEW PROCESS

Short-listed candidates will be interviewed by a panel of esteemed colleagues.

Candidates may be requested to present to the School and the wider Faculty.

Details of professional referees will be requested prior to the interview.

## REMUNERATION AND BENEFITS

An attractive remuneration package is offered.

This will include:

\$139,700 - \$153,659

RELOCATION SUPPORT – AS APPROPRIATE

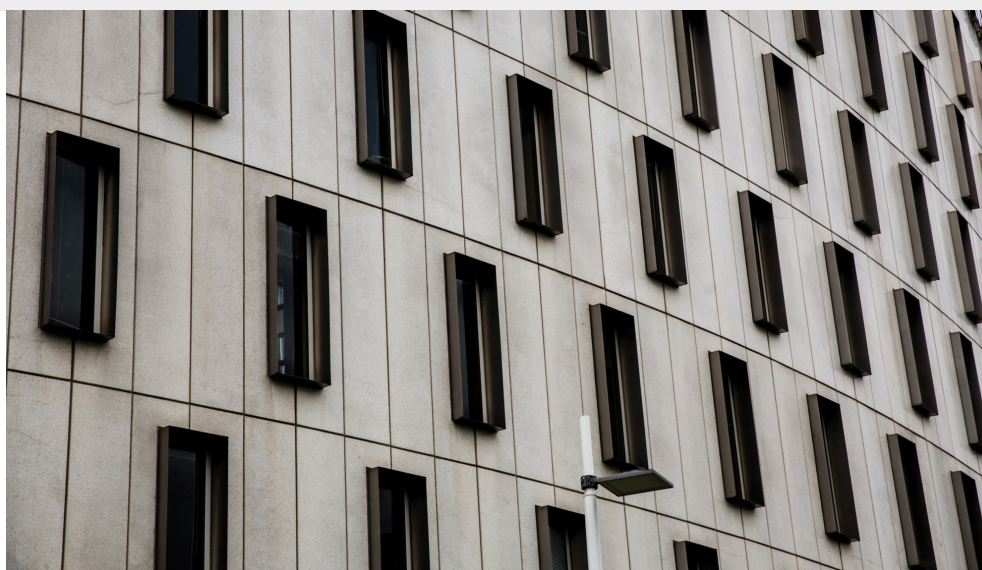
[Total Rewards at Deakin](#)

## TERM OF APPOINTMENT

Full-time and continuing

## SPECIAL REQUIREMENT

This role has been identified as having contact with children and requires the incumbent to apply for and maintain a Working With Children Check (refer to Deakin's Recruitment Procedure for further details).



Deakin University values diversity, enables access and promotes inclusion. Deakin University is an employer of choice for women and strongly encourages applications from Aboriginal and Torres Strait Islander people.





# OUR LOCATIONS

Deakin has four campuses, one in Burwood, two in Geelong (Waterfront and Waurin Ponds) and one in Warrnambool. It also has corporate centres in Melbourne CBD, Burwood and Geelong, a network of technology-rich learning centres across regional Victoria and international offices in India, China and Indonesia.

Melbourne has been named the world's most liveable city for the seventh year running\*

Further information regarding our locations and relocating to Victoria can be found here:

[Our locations](#)

[Considering Relocation](#)



[Geelong/SurfCoast timelapse](#)

\*The Economist's annual study

## GEELONG WATERFRONT CAMPUS

Geelong Waterfront Campus is located on picturesque Corio Bay, in the central business district of Geelong. Originally built as woolstores in 1893, the buildings have been extensively renovated to create a modern and impressive campus centre for over 4,500 students.

