



THE UNIVERSITY OF
**WESTERN
AUSTRALIA**

Appointment of

Professor of Advanced Manufacturing

Information for Candidates



Thank you for
your interest in
the position of
Professor of Advanced
Manufacturing at
The University of
Western Australia
(UWA).

Welcome

Thank you for your interest in the position of Professor of Advanced Manufacturing at The University of Western Australia (UWA).

We offer you an exciting opportunity to work with an institution that has developed a strong reputation for excellence in teaching, learning and research. The University's Vision 2030 is currently identifying the best ways that UWA can build on these strong foundations to become a hub of energy, innovation and aspiration for our future students, staff and stakeholders to amplify our global standing and impact.

At UWA we want you to pursue excellence, challenge convention and be inspired by unlimited possibilities. We offer you an environment in which you can really make a difference to the world and encourage others to do so too. You are not only joining a World Top 100 university, you will be part of a community of people committed to the world's advancement.

As the only Western Australian university in the Group of Eight, a coalition of leading Australian universities, you will have access to an exceptional support network committed to creating change.

Your future UWA colleagues are academic leaders in the broadest sense and have an established international reputation for outstanding teaching and research. We look forward to hearing from like-minded candidates.



Professor Dawn Freshwater
Vice-Chancellor



The University of Western Australia

When you join the UWA community, you will find dynamic and forward-thinking colleagues who, like you, are determined to challenge convention and make new things happen.

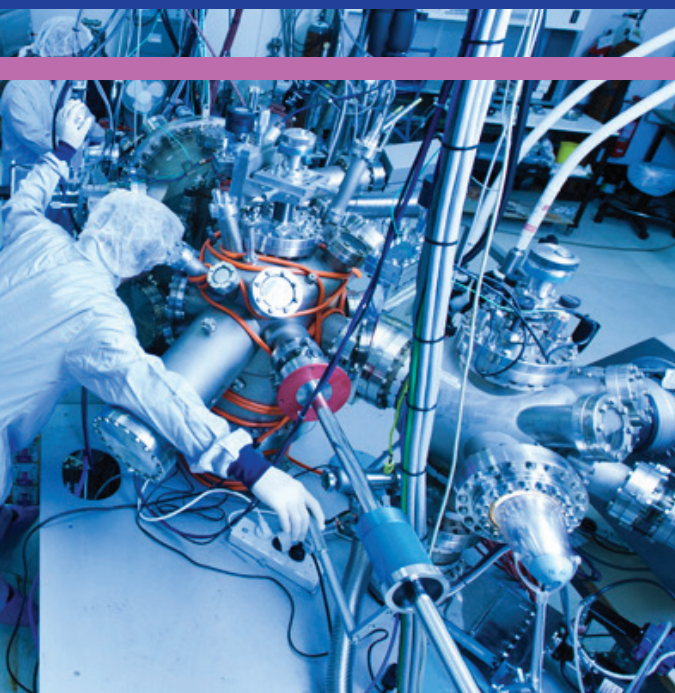
The University is regarded as one of Australia's top research institutions. Its strong research culture sees it attract high levels of competitive research funding. We operate more than 130 research and training centres and receive roughly 80 per cent of all research funding to Western Australian universities annually.

We celebrate strong industry partnerships and are placed equal first in Australia on key measures, including research intensity and research grants, according to the Good Universities Guide 2016. QS World Rankings has given us its highest rating of 5 Stars+ and we rank 91st in ARWU, 91st in QS and 111th in THE.

At UWA, we help people make the most of the possibilities presented. The University is a community of people with a desire to make the most of their potential and contribute to the world's advancement. Join us and pursue your ambitions.

uwa.edu.au





Mission

To provide world class education, research and community engagement for the advancement of prosperity and welfare of our communities.



Vision

To become recognised as one of the world's top 50 global universities by 2050.

University governance and management

The University is governed by the Senate, comprising 16 members from a range of backgrounds: community, staff, students and graduates.

Chaired by the Chancellor, the Hon. Robert French, the key roles of the Senate are:

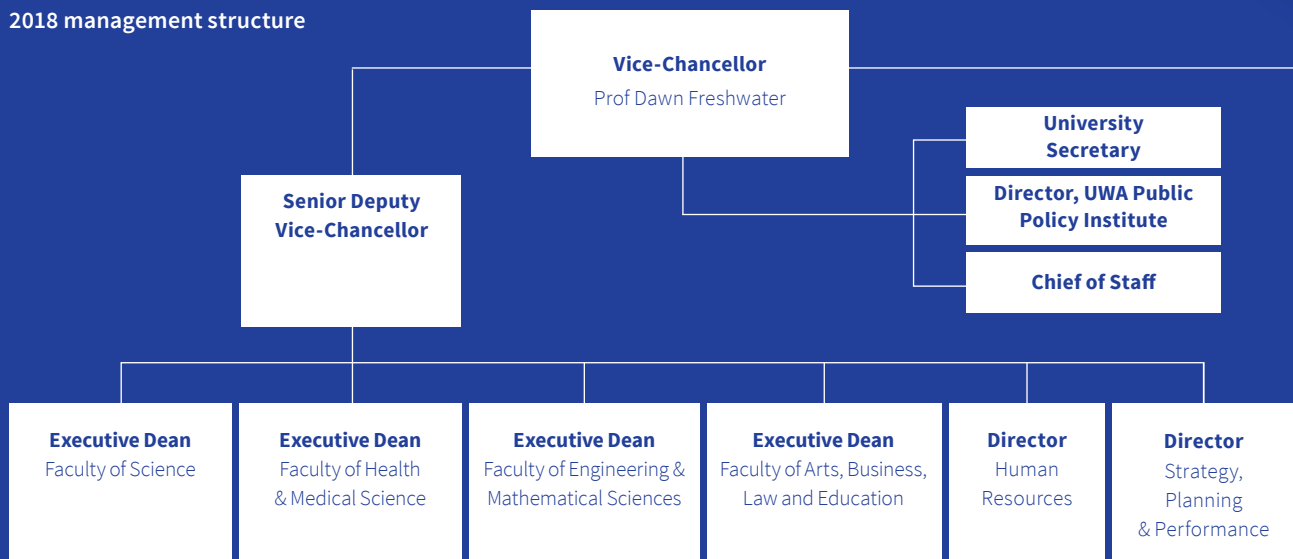
- providing a broad overview of strategic directions in the University
- overseeing corporate governance
- overseeing management of financial, human and physical resources
- performance monitoring
- to take legislative responsibility
- to support, guide and monitor the performance of the Vice-Chancellor

Key stats

Student enrolments 2017	24,327
Total staff (FTE) 2017	3,264
Research publications 2017	5,594



2018 management structure



Key institutional networks

Group of Eight

The Group of Eight is a coalition of leading Australian universities, intensive in research and comprehensive in general and professional education.

go8.edu.au

Matariki Network of Universities

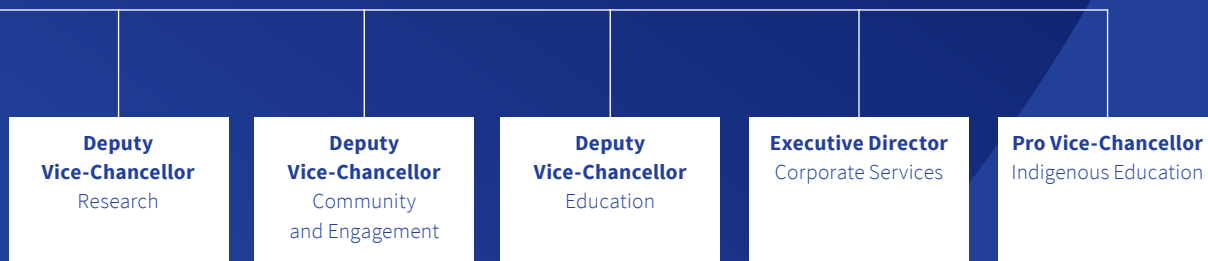
This international group of seven universities across seven nations focuses on strong links between research and undergraduate teaching, promoting international best practice in research and education.

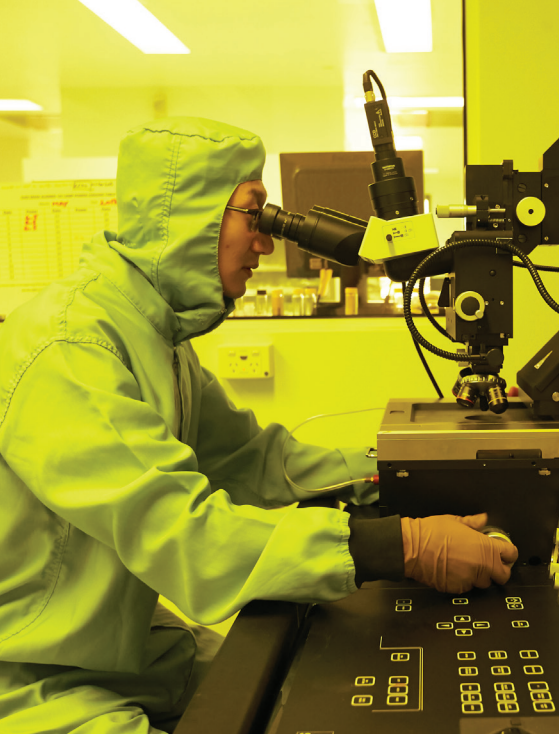
matarikinetwork.com

Worldwide Universities Network

The major issues facing our planet are of a magnitude that no single institution or organisation can address on its own. WUN collaborations aim to involve a number of world-leading academic partners in addressing our current 'Global Challenges'.

wun.ac.uk





The Faculty of Engineering and Mathematical Sciences

The Faculty of Engineering and Mathematical Sciences encompasses three Schools – the School of Physics, Mathematics and Computing, the School of Engineering and the Oceans Graduate School. Past graduates include Rhodes Scholars, Fulbright Scholars, Eureka Prize winners, CEOs and seven of the most influential engineers in Engineering Australia's Top 100 list. The Faculty is home to a former Scientist of the Year and award-winning inventors, and is part of the state of the art Indian Ocean Marine Research Centre. The Faculty prides itself on its track-record for producing graduates who not only perform well in their chosen profession, but are equipped with the skills and social capital they need to be the very best.

The Faculty has an international reputation for excellence in research and its research teams benefit from global partnerships with industry, attracting research income of more than \$27 million a year – well above the national average. With cross-disciplinary research groups, the Faculty offers a creative and innovative research environment and is poised to respond to a rapidly changing world and develop technologies that fulfil the demands of the 21st century. Equally important is educating the next generation of graduates for current and emerging industries. The Faculty seeks to embrace the latest forms of effective educational delivery and produce graduates with skill sets that promote flexibility and recognise the need for life-long learning.

The School of Engineering

The School of Engineering is renowned for its award-winning researchers, teachers and facilities. It is a multidisciplinary school offering education and research in a number of engineering disciplines. This includes civil, environmental, mining, chemical, mechanical, electrical and electronic engineering. UWA ranks in the world's top universities, as measured by several key independent rankings, including QS World University Rankings for Mineral & Mining Engineering (11th) and Civil Engineering (48th); and Shangai Rankings for Mineral & Mining Engineering (7th) and Environmental Science and Engineering (16th).

The School of Engineering has an established and dedicated team of teaching and research staff providing broad-based undergraduate programs with solid foundations across engineering disciplines. Innovations in Engineering for Remote Operations form teams of transdisciplinary researchers, offering integrated solutions to the challenges of remote developments. These programs are complemented by an integrated approach and solutions to the challenges of mining development and production, offshore engineering, agriculture, health, transport, energy, water supply and community development.





Western Australia and Perth

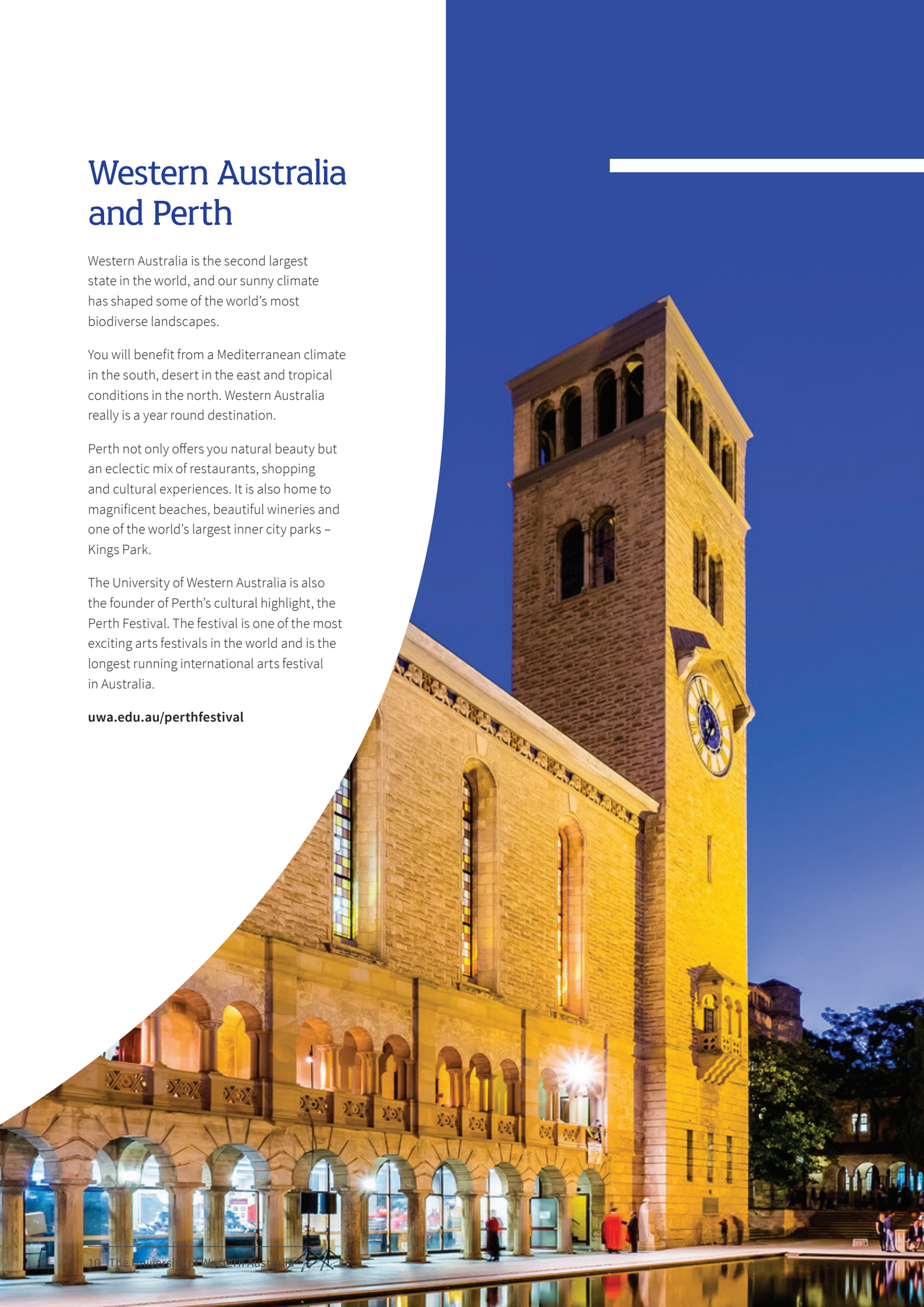
Western Australia is the second largest state in the world, and our sunny climate has shaped some of the world's most biodiverse landscapes.


You will benefit from a Mediterranean climate in the south, desert in the east and tropical conditions in the north. Western Australia really is a year round destination.

Perth not only offers you natural beauty but an eclectic mix of restaurants, shopping and cultural experiences. It is also home to magnificent beaches, beautiful wineries and one of the world's largest inner city parks – Kings Park.

The University of Western Australia is also the founder of Perth's cultural highlight, the Perth Festival. The festival is one of the most exciting arts festivals in the world and is the longest running international arts festival in Australia.

uwa.edu.au/perthfestival





Role, key responsibilities and selection criteria

Role

This senior position will provide key academic leadership in the development of Advanced Manufacturing as a core research strength at UWA. While open to all experts within Advanced Manufacturing, the Professor of Advanced Manufacturing will ideally have expertise in Additive Manufacturing, Micro-electro Mechanical Systems or Extractive Metallurgy, in particular Lithium.

Operating in a region abundant with potential industry partners, the Professor of Advanced Manufacturing will actively seek to establish and maintain strategic partnerships with external stakeholders, attract research funding and develop business opportunities. The Professor of Advanced Manufacturing will foster high quality, innovative research activities and lead the production of scholarly publications in their discipline.

As a passionate advocate for teaching excellence the successful candidate will contribute to the development and delivery of world class innovative teaching in the degree programs of the School and Faculty.



Key responsibilities

Leadership

- Provide strong Academic leadership within the discipline
- Promote excellence and continuous improvement in research and academic performance.
- Provide mentoring for staff and students as well as expert support for industry partners in teaching and research endeavours.

Teaching and Research

- Develop and maintain a strong, internationally recognized research programme synergistic with the existing research groups within the School, the Faculty and the University, that produces high quality research outcomes.
- Supervise research students at both the undergraduate and postgraduate levels as well as post-doctoral research fellows. Actively recruit quality postgraduate students and postdoctoral research fellows, both domestic and international.
- Contribute to the development and delivery of world-class innovative teaching in the degree programmes of the School and University at both undergraduate and postgraduate levels.

Engagement

- Actively seek research funding and business development opportunities with local and federal governments, relevant growth centres, as well as industry and international partners to drive research and collaboration and to enhance the reputation of UWA as a leading University.
- Actively represent the University and the Department domestically and internationally in scholarly events and through publishing in high-quality academic journals.
- Contribute to the broader Department, School, Faculty and University in its operation, providing service and leadership to the scholarly community and broader public as required.

Selection criteria

The successful candidate will demonstrate:

- A PhD in Engineering.

Leadership

- Proven ability to provide Academic leadership and promote excellence in teaching and research within a discipline
- Demonstrated success in a position requiring leadership and management at a senior level in a research and/or consultancy organisation.

Teaching and Research

- Demonstrated ability to produce high quality research outcomes; and willingness to undertake integrated research both within and across groups in academic and/or industry settings, and an ability to build partnerships within the University and externally with a range of stakeholders.
- A distinguished research profile in Advanced Manufacturing, demonstrated through consistent publications in high quality academic journals both domestically and internationally.
- Demonstrated outstanding ability and willingness to develop, co-ordinate and teach Engineering units at undergraduate and postgraduate levels. Evidence of successful teaching is essential.
- A collegiate attitude that values teamwork and an ability to work with a diverse group of people.

Engagement

- Proven significant ability to engage with Industry and to increase School and University business development capacity.
- Demonstrated ability to increase School and University capacity to attract and recruit higher degree research students, domestic as well as international.

Conditions of Employment

- Tenurable subject to satisfactory performance
- Employer contribution to superannuation of 17%
- Annual leave of 20 working days per annum
- Long Service Leave
- Visa sponsorship and relocation assistance for international appointees



Applications

Thank you for your interest. If you wish to proceed, your application must include the following:

- A covering letter or statement that clearly demonstrates the extent to which you satisfy each of the selection criteria and the requirements of the position;
- A curriculum vitae providing personal details, qualifications, grants, graduate student supervision, publications and work history;
- The names and contact details, including email addresses, of three referees who may be contacted for a confidential report. Please note that your permission will be sought before referees are contacted.

The University of Western Australia provides visa sponsorship for international appointees.

UWA is a National Employer of Choice for Women and a member of Athena SWAN.

Lodging your application

Applications must be submitted online at: jobs.uwa.edu.au

Closing date for applications is Friday, 19 October 2018

Enquiries and requests for further information may be addressed in confidence to:

Associate Professor Tim Sercombe
Dean and Head of School of Engineering
Tel: +61 08 6488 3124
Email : tim.sercombe@uwa.edu.au

