



Australian
National
University



INFORMATION FOR CANDIDATES
FOR THE POSITIONS OF
CHIEF SCIENTIST
CHIEF SOCIAL SCIENTIST
ANU CYBER INSTITUTE

Applications close: 16 December 2018

ANU College of
Engineering &
Computer Science

CONTENTS

Message from the College Dean	2
Message from the CEO ANU Cyber Institute	3
About Us	4
A World Leading University	5
University Colleges	6
The Scale of the Opportunity and Where to Begin	8
The ANU Cyber Institute	9
ANU Cyber Institute Structure	10
Our Values and Support for you	11
Application Process	12
Position Description and Selection Criteria	13
ANU Academic Level D	14
ANU Academic Level E	16
How to Apply	18
Testimony from Current Staff	19
What Life Will Be Like	20
Canberra - The World's Most Liveable City	21
Fast Facts	22

MESSAGE FROM THE COLLEGE DEAN

It gives me great pleasure to introduce The Australian National University's College of Engineering and Computer Science to you where talent is developed and cultivated.

The College is an exceptional community of students, educators, scholars and researchers who embrace the breadth of the computing and engineering professions. We are a diverse and vibrant community dedicated to discovery and to making knowledge matter.

We will inspire a new generation of high-potential creative people to come to engineering and computing with a diverse range of interests, motivations, perspectives and career aspirations.

We collaborate with a range of partners in academia, government and industry and have strong links to premier organisations such as Ford, Dolby, Boeing, CSIRO and the Australian Signals Directorate conducting pioneering interdisciplinary research and research-led education.

The College is entering an exciting period of transformation in education and research, allowing us to embrace new projects of societal relevance and to establish research agendas addressing global grand challenges. We have embarked on a major initiative to reimagine the role of engineering by thinking about what our world will be like in 2050 and aligning the College to meet the educational and research needs relevant to a rapidly evolving world.

Our societies are increasingly becoming large-scale systems of people, whose actions and interactions are influenced by our digital, physical and biological environments. We, and our technology are highly interconnected and yet highly diverse. Somebody, somewhere designed, built, and operates almost everything.



Our world needs people who are experts at designing, and safely operating, the engine that is composed of all of us – our society. They will need to be expert thinkers about how to safely design and operate highly heterogeneous and interconnected systems of natural and made things, IT and people – at scale.

We believe the role of engineers and computing experts in the 21st Century is to bring together expertise on people, technological systems and science. We will not step away from the need to master a coherent foundational body of knowledge, and we will not be confined by old disciplinary boundaries as we give shape to new bodies of knowledge. At its core, we will equip our people to ask the right kind of questions from a people-centric, technological and scientific perspective. We are looking for people who believe in the same things we do and who want to create something exceptional.

The next decade will be an exciting time for the College and I hope you can be a part of it. Unlock your imagination and reach out. We encourage applications from a wide ranging and diverse mix of people who are interested in joining us to make a difference and shape the future of engineering and computer science.

Professor Elanor Huntington

Dean

ANU College of Engineering and Computer Science

MESSAGE FROM CEO ANU CYBER INSTITUTE

It gives me great pleasure to introduce the newly formed ANU Cyber Institute to you. As a prospective candidate to join the leadership team in the ANU Cyber Institute, you are presented with an opportunity to join one of the world's most influential research universities.

As Australia's national university, we are the embodiment of the Nation's hopes for a better future for Australia, and carry a huge responsibility to make a significant contribution to the national priorities. We recognise the significant potential the University has to contribute to the nation's focus on Cyber.

In April 2016, the Australian Government released a national Cyber Security Strategy designed to set the direction for Australia's vision for a secure online future. It is a watershed strategy in national security and economic opportunity. The Government recognises the importance of both defensive and proactive measures to ensure Australia remains protected, and globally competitive in an increasingly connected market environment.

Further to this, the Independent Review of the Intelligence Community (IRIC), released in July 2017, recommended the establishment of a National Intelligence Community Innovation Hub to identify and develop capability needs and solutions - birthing the ANU Cyber Institute.

This Institute is purposed to support the increased requirement for innovative solutions to assist the Australian Intelligence Community in facing the challenges posed by the changing operational context, and an increased requirement for enterprise level investment and management of capability. Its establishment presents new and dynamic opportunities for research collaboration, innovation, teaching and outreach at home and abroad. We recognise that now is the time for the ANU to establish a multidisciplinary response to increasing demand for policy and technical expertise; innovative solutions to complex challenges; and job ready graduates. To achieve this, the ANU Cyber Institute requires a strong leadership team, a clear vision, and the effective development of relationships in industry, government and education.



We are looking for two recognised academic leaders in Cyber, with outstanding records of strategic planning and delivery within a complex environment. As part of the Cyber Institute leadership team, the Chief Scientist and Chief Social Scientist will exemplify the collaborative and interdisciplinary nature of the Institute's role across ANU and more broadly, and assist the CEO in developing and driving the vision, strategy and a long-term sustainable business model for the Institute. We seek people with passion, who want to go beyond established boundaries and forge new paths to the future.

I was pleased and excited to be offered the opportunity to build something new in this great University, and a Cyber Institute that is the first of its kind in this country.

The vision for the Cyber Institute aligns strongly with that of Professor Brian Schmidt, ANU Vice-Chancellor and Nobel Laureate, that we need the best staff to accompany us on the journey as we work to achieve the strategic vision of the University. It is also in tune with the vision of Professor Elanor Huntington, Dean of the College of Engineering and Computer Science that we need to deliver people who are experts at designing and operating safely the engine that is composed of all of us – our society.

If you would like the opportunity to shape the national research agenda in collaboration with industry, government and within the education sector, we look forward to receiving your application.

Dr Lesley Seebeck
CEO, ANU Cyber Institute



ABOUT US

A WORLD-LEADING UNIVERSITY

The Australian National University (ANU) is one of the world's foremost research universities.

Distinguished by its relentless pursuit of excellence, the University attracts leading academics and outstanding students from Australia and around the world.

Further information about ANU can be found at:
anu.edu.au/about

History

The University was established by the Commonwealth Parliament in 1946 specifically to lead the development of the intellectual capacity of the nation through research and research training in line with the best international standards. It is the only Australian university established by a Commonwealth Act of Parliament. In 1960, the University accepted responsibility for undergraduate education along with an expectation that the highest standards of education would be achieved.

Scale

The University has 4,300 staff, 10,286 undergraduates and 6,925 postgraduate students. Its annual revenue exceeds \$1.0 billion and consolidated assets are worth \$2.5 billion

Partnerships

The University has strong links with leading research institutions in Australia and overseas. It is a founding member of the International Alliance of Research Universities, a co-operative network of 10 eminent international research-intensive universities which includes:

- > University of Cambridge
- > University of Oxford
- > University of California, Berkeley
- > Yale University
- > Peking University
- > National University of Singapore
- > University of Tokyo
- > University of Copenhagen
- > ETH Zurich

Research-intensive education

As the specially-chartered national university, the University conducts research at the highest levels in all of its colleges, and offers a unique research-led education to undergraduate and postgraduate students as well as postdoctoral fellows.

The University advances the national intellectual and creative capacity in three key ways:

1. Through broad-based research and research-intensive education in the disciplines fundamental to all knowledge: the humanities, the sciences and the social sciences,
2. By supporting research and research-intensive education in a spectrum of professional disciplines, and
3. By studying Australia in its various contexts.

It is the aim of the University to achieve its objectives by creating an inspirational working environment for all its staff, students and visitors.

In each of its endeavours, the University strives to achieve at the levels of the world's great universities.

Location

The University campus has over 200 buildings and occupies 145 hectares adjacent to the city centre of Canberra. The University also has a number of smaller campuses:

- > Mount Stromlo Observatory (west of Canberra)
- > Siding Spring Observatory (near Coonabarabran, western New South Wales)
- > North Australia Research Unit (Darwin, Northern Territory)
- > Kioloa (coastal campus near Bawley Point, on the New South Wales South Coast)
- > ANU Medical School – The Canberra Hospital campus
- > ANU Medical School – Calvary Hospital
- > Health Facilities in South East New South Wales

UNIVERSITY COLLEGES

The Australian National University has seven colleges, each made up of the research and education schools and centres that contribute to the various broad disciplines.

The ANU Colleges link research and teaching at undergraduate, postgraduate and higher degree levels. They undertake world-class research, and provide education programs at the highest standards. The University recognises the need to strengthen strategic planning, align administrative support with these plans and ensure consistency of policy and procedure. The aim of the college structure is to promote and formalise cooperation among the different contributors to disciplines in ANU and to remove barriers in their path.

ANU College of Asia & the Pacific

The ANU College of Asia and the Pacific (CAP) hosts the largest assembly of scholars dedicated to working on Asia and the Pacific in the English-speaking world. Organisationally the College comprises three large Schools - the School of Culture, History and Language (CHL); the School of International, Political and Strategic Studies (IPS); and the Crawford School of Public Policy - and two Research Centres: the Regulatory Institutions Network (RegNet) and the Australian Centre on China in the World.

asiapacific.anu.edu.au

ANU College of Arts & Social Sciences

The ANU College of Arts and Social Sciences (CASS) is the research and education college for the broad disciplines of the creative arts, humanities and the social sciences. The College has two research schools and an Institute – a Research School of Social Sciences; a Research School of Humanities and the Arts; and the Australian Demographic and Social Research Institute

– that cover the main disciplines to deliver leading research and degree programs.

cass.anu.edu.au

ANU College of Science

The ANU College of Science (CoS) consists of the Research Schools of Physics and Engineering, Earth Sciences, Chemistry, Astronomy and Astrophysics, and Biology, plus the Fenner School of Environment and Society, the Mathematical Sciences Institute, and the Australian Centre for the Public Awareness

of Science. Academic staff within the ANU College of Science undertake world leading research and deliver research-led education on issues of global importance, supported by extensive international networks and world class facilities.

science.anu.edu.au

ANU College of Business & Economics

The ANU College of Business and Economics (CBE) seeks to advance knowledge through high quality teaching and research in the closely related areas of accounting, actuarial studies, business information systems, econometrics, economic history, economics, finance, international business, management, marketing and statistics. It endeavours to do this through the provision of a range of undergraduate and graduate programs, and through its research, publications and contributions to the associated professions, commerce, industry and government.

cbe.anu.edu.au

ANU College of Engineering & Computer Science

The ANU College of Engineering and Computer Science (CECS) comprises the Research School of Engineering, the Research School of Computer Science, the 3A Institute and the Cyber Institute. It offers undergraduate degrees in engineering, information technology and computer science along with masters and doctoral postgraduate programs. The College undertakes basic and applied research in information and communications technologies, materials and manufacturing, formal methods and logic, machine learning and vision, robotics and energy systems.

cecs.anu.edu.au

ANU College of Law

The ANU College of Law (CoL) is Australia's national law school, committed to legal education and research at the highest level, and to striving for continuous improvement in the law for the benefit of national and international communities. The College offers LLB and LLB (Graduate) degrees, a Graduate Diploma in Legal Practice through the Legal Workshop, and postgraduate research and course work degrees.

law.anu.edu.au

ANU College of Health & Medicine

The ANU College of Health and Medicine (CHM) comprises the ANU Medical School, the John Curtin School of Medical Research, the Research School of Psychology and the Research School of Population Health. These schools work together to deliver world-class research and education across the spectrum of medicine and health-related fields, working in partnership with the health sector at local, national and international levels.

science.anu.edu.au

THE SCALE OF THE OPPORTUNITY AND WHERE TO BEGIN

The ANU College of Engineering and Computer Science has a strong International research reputation, a vibrant research led education program and has impact in the world.

The College is leading the Reimagine Project, a major strategic priority for ANU over the next decade. It is a unique opportunity to reimagine the future of Engineering and Computing in the context of our current and future society.

We will build on our proud tradition of excellence in research, and creativity in quality education to frame new thinking about, and solutions to, some of the world's most complex human and technological challenges. Through the Reimagine Project, the College of Engineering and Computer Science will grow nearly 3-fold, inspiring a new generation of creative thinkers to these areas, challenging historic biases through the inclusive environment we create together.

Not only are we investing in our people and students, but also in a world-class infrastructure, and ethos.

Reimagine will markedly transform the physical and digital environment, research, learning and collaboration spaces on campus.

We do not underestimate the scale or complexity of our ambition. We are fully aware that tripling the size of Engineering and Computing in a world-leading university

– in order to completely re-orientate and Reimagine the future of these disciplines – is a unique undertaking. Our hope is that you will share our passion, drive and commitment and join us to realise this incredible undertaking.

One of the most exciting elements of this opportunity for the right candidate will be joining at the very early stages of this endeavour with the chance to shape every aspect of the environment from the physical infrastructure right through to our culture and ethos. Nothing is ever a blank sheet of paper but this is a unique opportunity to get very close to just that – and with the support and backing of a fully committed, world-leading research university around you. We have the strategic and financial backing of this great university and we are ready to launch.

cecs.anu.edu.au/reimagine



THE ANU CYBER INSTITUTE

By necessity, the work of the Cyber Institute will be inter-disciplinary and cross-sectoral, marrying several academic disciplines. It will bring together researchers and practitioners from across the university sector, as well the public sector and private industry.

Purpose of the Institute

The Institute is designed to build activity around the following key tenets:

- > Inter-disciplinarily: needed to address holistically the technological, social, legal, economic and political dimensions of cyber;
- > Career mobility: needed to gain intersectoral benefit, through frameworks and experiences that support and encourage students and professionals to move between industry, government and research employment, resulting in the cross-pollination and deepening of skills, experiences and linkages;
- > Quality, industry-edge research: tackling relevant, difficult problems, building sustained research excellence, connecting to the best global research, and generating critical insights for government and industry;
- > Research and practice that directly translates into outcomes through cyber (tech) start-ups and key industry players to assist and grow Australia's capacity as a global provider of cyber products;
- > Creating export capability: an education and skills program that builds the best cyber professionals in Australia and leads international practice, able to be exported globally;
- > The research and education agenda will be problem-inspired and driven in close consultation with external partners. This will see a range of disciplines across the University participating and would most likely include: computer science, strategy, policy, technology, business, finance, psychology, ethics, ethnography, engineering, and material science.

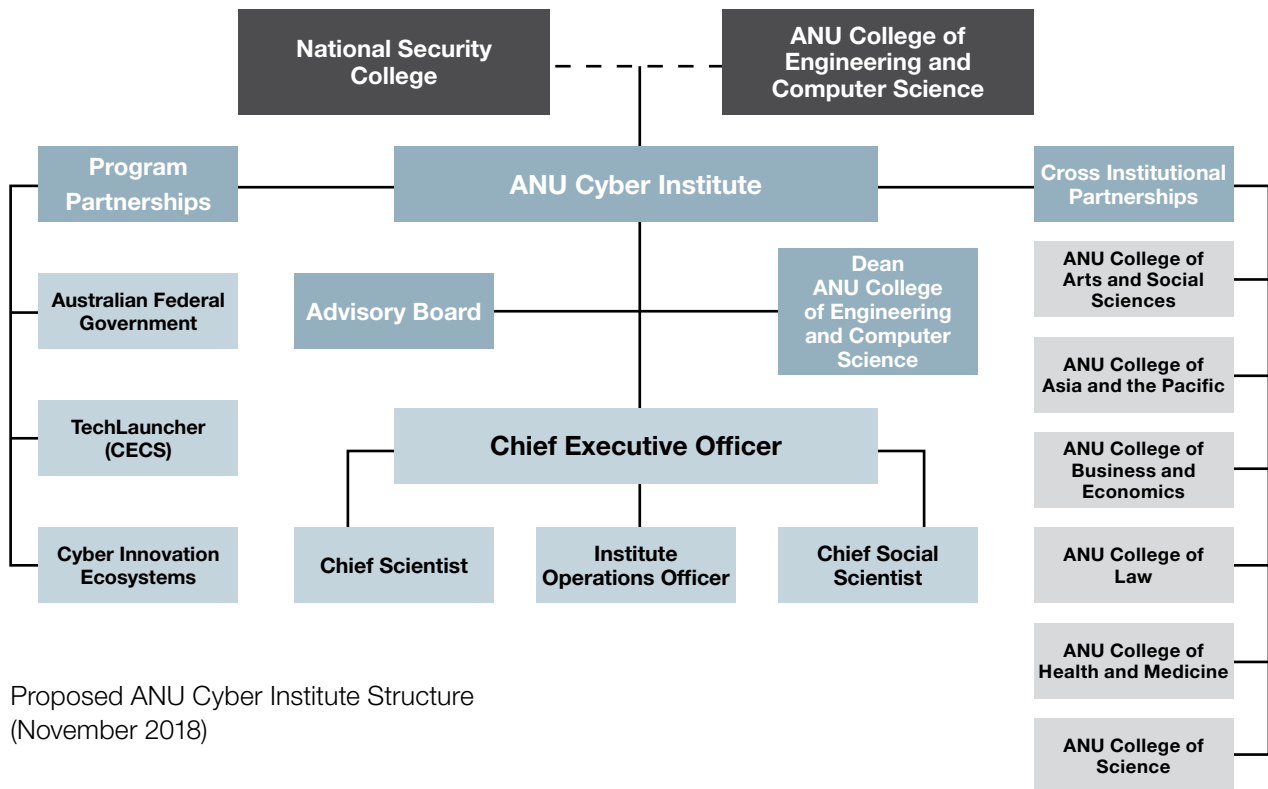
Mission of the Institute

The mission of the Institute is to harness, coordinate and multiply the cyber capabilities of the University in partnership with government, business and civil society. The Institute will be undertaking high-quality cyber research to address the difficult questions presented by an increasingly contentious and complex cyber environment, and using new models of education to build the cyber professionals needed in the digital economy.

The ANU Cyber Institute will:

- > Consolidate and deepen cyber related research, innovation and teaching activities across campus;
- > Provide a permeable model for industry and government agencies to engage with students, researchers, and with policy and technology advisors;
- > Consolidate the University's status as a principal source of the cyber skills and knowledge needed to help meet the current and future workforce requirements of government agencies and industry;
- > Provide an administrative 'umbrella' for ANU applications for major funding relating to cyber, including national infrastructure grants, Cooperative Research Centre(s) and Cooperative Research Centre Project proposals;
- > Provide a single, easily identifiable single point of entry for cyber for the University's diverse cyber research and teaching activities;
- > Provide co-location opportunities for Canberra-based activities occurring under the Government's Cyber Security Strategy.

ANU CYBER INSTITUTE STRUCTURE



Proposed ANU Cyber Institute Structure
(November 2018)

The Advisory Board is ANU Cyber Institute's governing body, and comprises of the following members:

- > Vice-Chancellor and President, ANU;
- > Dean, ANU College of Engineering and Computer Science;
- > Head, National Security College;
- > CEO, ANU Cyber Institute;
- > External Senior Member.

OUR VALUES AND SUPPORT FOR YOU

The Australian National University is committed helping create an environment and culture that is supportive of the most creative and imaginative ways of reframing, thinking, being and doing in order to address those highly complex human, system, digital and physical problems our society faces, including those we have not yet anticipated.

Our role is to help orchestrate new thinking and new opportunities through bringing together a wide range of expert thinkers in related areas in such a way that old boundaries fall away and new discovery happens.

We will support you in collaborative endeavour. We will support you when this gets difficult and even when it fails. We will support you when you identify gaps that we can help to fill. We will support you when you are supporting others and building capacity and teams around you. We will support you in building an inclusive, positive and supportive environment that rewards brave new ideas that break new ground.

We will define, resource and reward success for individuals and teams in creative and different ways and we will recruit to compose teams.



An aerial photograph of a university campus during autumn. The foreground is filled with trees showing vibrant yellow and orange foliage. Several modern university buildings with flat roofs and large windows are scattered throughout the campus. In the background, a large, forested hill rises, topped with a tall, slender telecommunications tower. The sky is a clear, deep blue, and the overall scene is bathed in the warm, golden light of late afternoon or early morning.

APPLICATION PROCESS

POSITION DESCRIPTION AND SELECTION CRITERIA

The role statements and selection criteria below are for both the Chief Scientist and Social Scientist positions with the following differentiation:

- Chief Scientist – science or technology standing in a cyber security related field
- Chief Social Scientist – social or behavioural sciences standing with experience across a range of ethnographic and survey methods as applied in cyber related fields

These positions are advertised at Academic Level D or Academic Level E, with appointment made at the classification best suited to the individual qualifications and experience.

Responsible to

- CEO Cyber Institute

Purpose Statement

The ANU has established a Cyber Institute to meet the increasing demand for policy and technical expertise, innovative solutions to complex challenges, and job-ready graduates in cyber security. It will provide a new benchmark for intellectual leadership on campus and beyond, producing outcomes that inherently require multi-disciplinary collaboration, and serving the national mission of the University. The Cyber Institute is located within the College of Engineering and Computer Science (“the College”), with a close working relationship with the National Security College.

The position will play an active role in positioning the College and Cyber Institute to shape the national research agenda, and to establish partnerships with industry, within the education sector and with other traditional and non-traditional developers and users of research and innovation.

The purpose of this appointment is to:

1. Support the establishment of an innovative, interdisciplinary, outwardly-focused research program;
2. Support the development of partnerships with industry and engage with the wider research community to develop and sustain research on complex problems in cyber, educational outcomes and innovative solutions;
3. Contribute to the strategic priorities of the Institute, the College of Engineering and Computer Science and National Security College, and the enduring mission of ANU; and
4. Generate funding support through internal and external mechanisms to sustain the mission of the Institute
5. Support the development of innovative learning experiences for students and the next generation of graduate researchers



ANU ACADEMIC LEVEL D

Role Statement

Specific duties required of a Level D Academic in the Cyber Institute may include:

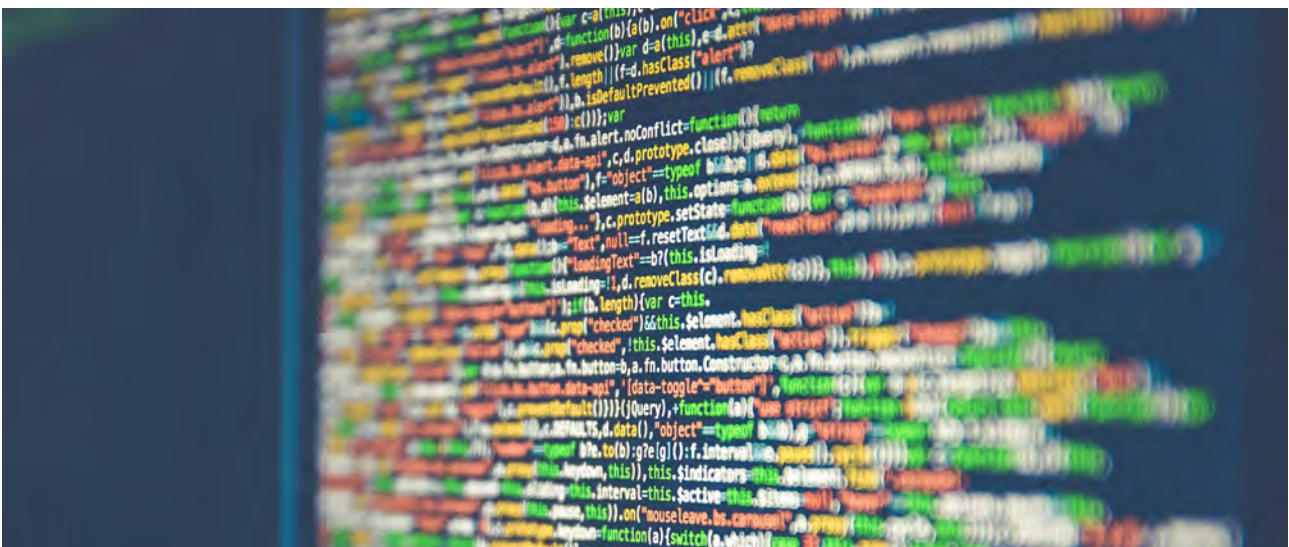
1. Undertake high impact independent research activities in a collaborative and cross-disciplinary environment, to contribute to the Cyber Institute research and education agendas, and build body of unique intellectual knowledge.
2. Significant involvement in the sharing of this new body of knowledge through technology and/ or a combination of these research areas with a view to publishing original, innovative and multi-disciplinary results in international refereed journals, presentation at conferences and provision of insights to policy- makers represent the work of the Cyber Institute, and ensure engagement with other researchers at a national and international levels.
3. In collaboration with senior academics, hold a key role in seeking and generating resources to support the development of the Cyber Institute's research and development programs, through engagements with a range of funding bodies and through the preparation of a combination of multi-party collaborative research proposals, industry funds and approved consultancy arrangements. Where appropriate, oversee the financial management of grants received for research projects.
4. Establish and maintain relationships with industry, government and the wider research community to enhance cross- disciplinary collaborations and support the translation of research outcomes into commercial and useful applications
5. Make a strong contribution to the teaching activities of the Cyber Institute at the undergraduate and graduate levels. This includes, but is not limited to, course coordination including the development of and responsibility for curriculum/programs of study.
6. Supervise students working on individual or group projects at undergraduate, honours, graduate- coursework levels. Supervision of research students. Supervision and support for external/industry based placements.
7. Manage and provide leadership through team development, mentoring and career development of less senior academic in alignment with the performance development process at the ANU.
8. Proactively contribute to all aspects of the operational of the Cyber Institute, College and University, lead and assist in outreach activities including to prospective students, research institutes, industry, government, the media and the general public.
9. Improve and consistently promote high academic standards in all education, research and administration endeavours.
10. Take responsibility for their own workplace health and safety and not willfully place at risk the health and safety of another person in the workplace.

Selection Criteria

1. A PhD or equivalent that is relevant to cybersecurity, science/technology or social science, with a strong track record of independent research as evidenced by high impact research outputs in industry, government or academic environments.
2. Proven capacity to contribute to the strategic priorities and activities of the Cyber Institute, including a commitment to enhancing diversity.
3. A strong orientation to collaborative research, team-based projects and interdisciplinary activities and interests.
4. A strong record of leading and winning bids for external funding (if relevant in your industry) to support individual and collaborative research activities, and the ability to identify similar opportunities for others to pursue and to provide mentoring in the process.
5. Outstanding communication skills with the ability to inspire a wide range of audiences, including in a cross- disciplinary areas and to foster respectful and productive working relationships with staff, students and colleagues at all levels.
6. Evidence of effective teaching, training or mentoring (if relevant in your industry) and of the ability to contribute significantly to setting the education agenda of the College.
7. Capacity to foster graduate student education and inspire undergraduate students along with a commitment to outreach activities involving the general community, schools, public sector, industry and the wider research community.
8. Ability to provide leadership to early-career researchers and to mentor and develop colleagues to achieve goals in alignment with the College's strategic priorities, particularly in relation to building a diverse and inclusive community life
9. A demonstrated high-level understanding of diversity and inclusion principles and a commitment to the application of these policies in a University context.

A Level D Academic will normally have a relevant doctoral qualification or equivalent accreditation and standing together with subsequent research experience.

A position at this level will require a demonstrated strong record of research output in academia, industry or government in secure hardware and software systems.



ANU ACADEMIC LEVEL E

Role Statement

1. Undertake high impact independent research activities in a collaborative and cross-disciplinary environment, to contribute to the Cyber Institute research and education agendas, and build body of unique intellectual knowledge.
2. High level involvement in the sharing of this new body of knowledge through technology and/or a combination of these research areas with a view to publishing original, innovative and multi-disciplinary results in international refereed journals, presentation at conferences and provision of insights to policy-makers represent the work of the Cyber Institute, and ensure engagement with other researchers at a national and international levels.
3. Take a lead role in seeking and generating resources to support the development of the Cyber Institute's research and development programs, through engagements with a range of funding bodies and through the preparation of a combination of multi-party collaborative research proposals, industry funds and approved consultancy arrangements. Where appropriate, oversee the financial management of grants received for research projects.
4. Establish and maintain relationships with industry, government and the wider research community to enhance cross- disciplinary collaborations and support the translation of research outcomes into commercial and useful applications
5. Make a distinguished contribution to the teaching activities of the Cyber Institute at the undergraduate and graduate levels. This includes, but is not limited to, taking a leadership role in curriculum design and review, design and implementation of innovative pedagogy, and establishment of degree programs in collaboration with colleagues.
6. Supervise students working on individual or group projects at undergraduate, honours, graduate-coursework levels. Supervision of research students. Supervision and support for external/ industry based placements.
7. Lead, supervise and develop less senior academic and research support staff in the School. . Providing leadership, mentoring and career development advice in alignment with the performance development process at the ANU.
8. Proactively contribute to all aspects of the operational of the Cyber Institute, College and University, lead and assist in outreach activities including to prospective students, research institutes, industry, government, the media and the general public.
9. Improve and consistently promote high academic standards in all education, research and administration endeavours.
10. Take responsibility for their own workplace health and safety and not willfully place at risk the health and safety of another person in the workplace.
11. Other duties as required consistent with the classification level of the position.

Selection Criteria

1. A PhD or equivalent that is relevant to cybersecurity, science/technology or social science, with a strong track record of independent research as evidenced by high impact research outputs in industry, government or academic environments. A very strong orientation to collaborative research, team-based projects and interdisciplinary activities and interests.
2. Proven capacity to contribute to the strategic priorities and activities of the Cyber Institute, including a commitment to enhancing diversity.
3. Highly demonstrated orientation to collaborative research, team-based projects and interdisciplinary activities and interests.
4. An extensive record of leading and winning bids for external funding (if relevant in your industry) to support individual and collaborative research activities, and the ability to identify similar opportunities for others to pursue and to provide mentoring in the process.
5. Demonstrated capacity to effectively support the management of a research facility by setting a strategic vision, clear research directions, budgets and goals for all staff/students, driving domestic and international collaboration at the highest level that ensures continuity of research and field leadership positions.
6. Excellent communication skills with a demonstrated ability to inspire a wide range of audiences, including in a cross- disciplinary areas and to foster respectful and productive working relationships with staff, students and colleagues at all levels.
7. The ability to make strategic and significant contribution to the education agenda of the Cyber Institute, and where appropriate to your industry, evidence of outstanding teaching at all levels.
8. Highly demonstrated capacity to foster graduate student education and inspire undergraduate students along with a commitment to outreach activities involving the general community, schools, public sector, industry and the wider research community.
9. Proven ability to provide leadership to early-career researchers and to mentor and develop colleagues to achieve goals in alignment with the College's strategic priorities, particularly in relation to building a diverse and inclusive community life
10. A demonstrated high-level understanding of diversity and inclusion principles and a commitment to the application of these policies in a University context.

A Level E Academic is expected to possess advanced academic qualifications, broad expertise and deep knowledge in the relevant discipline area, and in this case, demonstrated capability to work beyond their own domains. Academic positions are expected to possess leadership skills in order to foster excellence in that field of research within the university, the discipline and/or the profession and within the scholarly and/or general community. Experience in directing significant research groups, either in academia, industry or government in secure hardware and software systems is also expected.



HOW TO APPLY

We're keen for you to have the chance to demonstrate both the impact of your work and your enthusiasm for joining us at the Cyber Institute.

Please prepare the following application material:

- 1.** Detailed curriculum vitae (non-academic and non-traditional CVs are welcome).
- 2.** A short cover letter explaining how you would contribute to the Cyber Institute with consideration to the Selection Criteria.
- 3.** Evidence of the impact of your portfolio of work, which may include research, course facilitation and outreach (this can be in case-study form).
- 4.** A written reference from an external party who can describe the impact of your research.

Anticipated Timeframes

- > Applications close: 16 December 2018
- > Shortlisting of candidates: December / January 2019
- > Interviews: January 2019
- > Campus Visit/ Seminar/ Interview meetings: February 2019
- > References and Negotiations: thereafter

Enquiries

For further information and a confidential discussion about the role, please contact:

Blayne O'Hara
T +61 1300 565 010

To Apply

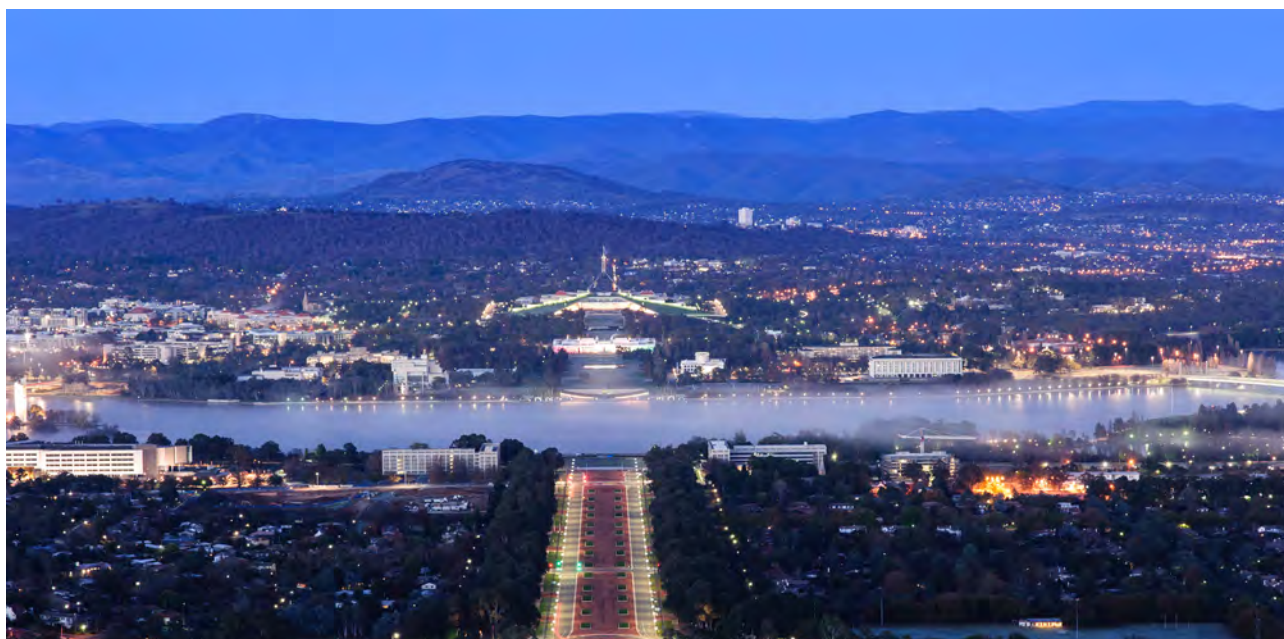
Please contact:

Blayne O'Hara of EQV Associates via email on **contact@eqvassociates.com**, stating reference 'Cyber Institute'.

Deadline for applications:

Sunday 16 December, 2018 at midnight AEDT.

The University reserves the right to invite applications and/or to not make an appointment.



TESTIMONY FROM CURRENT STAFF



Dr Elizabeth Williams

Research Fellow

Autonomy, Agency and Assurance Institute

I was attracted to the 3A Institute because of the opportunity to help create a new applied science that might directly and positively impact humanity. I've been working in the Institute since April 2018, and I feel like my colleagues and I on the research team are already making steps towards achieving this goal. It's been an incredible experience thus far. I love working in an interdisciplinary team -- we all bring very different backgrounds and perspectives to each research question, which means we're all learning, questioning every assumption, and coming up with interesting new ideas on a daily basis. More broadly, I really enjoy being part of ANU's campus community – the students are diverse and highly motivated, campus is vibrant, and home is a short and lovely bike ride away.

Associate Professor Antonio Tricoli

ARC DECRA, WESTPAC, FERL Fellow

ANU College of Engineering and Computer Science

Since I have been selected as a recipient for a FERL fellowship at the Research School of Engineering (ANU), I had the opportunity to experience a stimulating and rapidly growing research environment. The unique freedom, autonomy and mentoring offered with this position are a great asset that has greatly contributed with my personal and academic development. I have greatly appreciated the welcoming research culture and mindset that are a substantial support toward the achievement of any ambitious goals.



Steve Lee

Group Leader/Senior Lecturer

Research School of Engineering

At the ANU, I have many fruitful interactions with many distinguished academics from different engineering and scientific disciplines across Australia in a very short period of time, which could otherwise be less than forthcoming elsewhere. I received mentoring time from senior academics that has helped me manage a multifaceted academic career which is highly valued in today's competitive academic climate.

Associate Professor Stephen Gould

Ongoing Position (OP) Program 2010

When returning to Australia in 2010, I was looking for an academic research environment that encouraged research excellence, collaboration, and exposure to top quality students. I found that at the Research School of Computer Science at the ANU and it's close ties with NICTA (nowData61).ANU has been a place where I can focus on building world-class research with my peers, engage with other academic and industry partners, and develop innovative teaching programs to motivate and excite some of the best students in the world. The informal mentoring that I have received from senior academics and support from the College leadership has been invaluable in allowing me to win numerous competitive grants and industry research contracts.

And while Canberra may seem a long way from the rest of the world, the generous travel grants and reduced teaching load in my first few years allowed me to stay close to international colleagues. Looking back, I am confident that I have chosen the right place to build my research career at one of the world's top universities.



WHAT LIFE WILL BE LIKE

THE CANBERRA ADVANTAGE

Canberra has the power to surprise, with its abundance of fine food, wine, art, culture, ideas and innovation. As an evolving city, this element of surprise continues even once you've made Canberra your home, with new developments, events and opportunities constantly emerging to keep life interesting.

Proximity to power and policy

Our unique location in Canberra creates an enriched teaching and research environment, giving our researchers and students access to the nation's political and policy making community.



A unique environment with unrivalled access

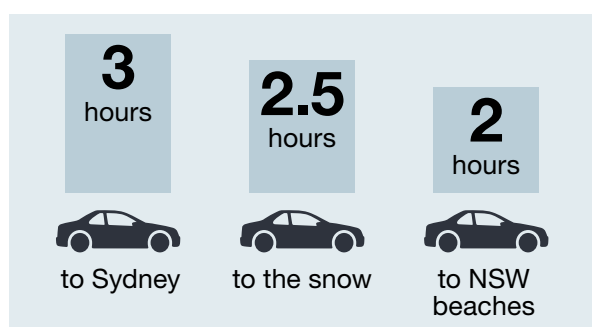
Our healthy appetite for outdoor pursuits is enhanced by the natural resources available: from sailing on Lake Burley Griffin, mountain biking at the world class Mount Stromlo facility or heading up to the Snowy Mountains for a day on the slopes.

We are also home to most of Australia's major national cultural institutions, with whom the University has a close relationship, and a cultural calendar overflowing with international exhibitions, arts festivals and entertainment.

World leading quality of Life

Canberra is designed to maximise the quality of life, built on a blueprint that connects people with community and nature, Canberra provides you the opportunity to create a unique work/life balance, wherever you choose to live. Rated #3 in Lonely Planet's 'Best in Travel' (2018), the best city in the world for well-being (OECD 2014) and top 25 in the world by QS Best Student Cities (2017), living in Canberra means you'll enjoy a high quality of life in a city with one of the best educated workforces, highest average full-time income and lowest unemployment rate in Australia.

For more information about life in Canberra: visitcanberra.com.au



FAST FACTS



#1

#1 in Australia

ANU is ranked #1 in Australia and #24 in the world.¹

6

Six Nobel Laureates

The highest number of all Australian universities.

Ranked #1

Ranked top in Australia for producing the most employable graduates

¹ QS World University Rankings 2017/18; 2018/19 Quacquarelli Symonds (QS) World University Rankings

² Good Universities 2015

³ ERA Results 2015

⁴ Good Universities 2014

⁵ 2014 OECD's Better Life Index Rankings

⁶ 2017–18 Times Higher Education International Outlook

⁷ The Global Employability Ranking 2017

IARU

ANU is the only Australian member of the International Alliance of Research Universities.²

31%

Percentage of total College income generated by external funding.

#2

International outlook

Ranked second in Australia and 7th in the world for international outlook.⁶

Highest ranking

ANU is the only Australian university to consistently receive the highest ranking for research in Artificial Intelligence & Image Processing, & Information & Computing Sciences over the past five years.³

FAST FACTS

World's largest

ANU owns the world's largest paraboloidal dish solar concentrator, 500m² in size.

Super computer

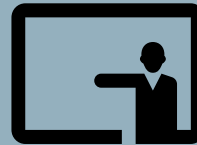
ANU is home to Raijin, Australia's largest and most powerful university based super-computer.

World's most livable city

Canberra provides an enviable quality of life for ANU students and their families; it is the best place to live in the world.⁵

87%

Percentage of ANU academic staff who hold a PhD.⁴



'Well above' world standard

Our research is rated well above world standards in the areas of: ³

Information & Computing Sciences

Artificial Intelligence & Image Processing

Electrical & Electronic Engineering

Materials Engineering



Graduate starting salary

Research intensivity

Research grants

Staff qualifications

The Australian National University,
Canberra ACT 2600 Australia

CRICOS Provider #00120C