



# Position Description

## Lecturer in Podiatry

School of Allied Health, Exercise and Sports Sciences

Faculty of Science and Health

<b>Classification</b>	Level B
<b>Delegation band</b>	<a href="#">Delegations and Authorisations Policy (see Section 3)</a>
<b>Special conditions</b>	Nil
<b>Workplace agreement</b>	<a href="#">Charles Sturt University Enterprise Agreement</a>
<b>Date last reviewed</b>	9 September 2021



# About Charles Sturt University

## Purpose

The Wiradjuri phrase *yindyamarra winhanganha* means the wisdom of respectfully knowing how to live well in a world worth living in. This phrase represents who we are at Charles Sturt University – our ethos. It comes from traditional Indigenous Australian knowledge, but it also speaks to the vision of the university – to develop and spread wisdom to make the world a better place.

## Vision

Charles Sturt University is set to undergo a decade of great reform that will see the university characterised by these key elements:

- An uncompromising drive towards excellence in every aspect of its operations
- A far-reaching strategic re-positioning of teaching, learning, research, and innovation
- A cementing of our position as Australia's pre-eminent rural and regional university

The overarching aim is to consolidate our institution so that it is demonstrably more resilient and sustainable by the end of the decade.

## Goals

To deliver on our Purpose and Vision, the university has three key goals:

1. Maintain the university's position in the top five Australian universities for graduate outcomes based on employment and salary
2. Embed a culture of excellence across all aspects of the university's operations
3. Exponential growth in research, development, and innovation income in our chosen areas, delivering high impact outcomes for regional Australia

## Our values

Charles Sturt has a proud history and is fortunate to have an outstanding group of diverse, passionate, and engaged people working with us. Our values of insightful, inclusive, impactful, and inspiring guide our behaviours and ways of working to help us achieve our ethos of creating a world worth living in.

## Performance measures

In addition to the principal responsibilities, all staff will be required to contribute to the success of the university strategy including meeting the eight university key performance indicators:

<b>Our Students</b>	Commencing Progress Rate Student Experience
<b>Our Research</b>	Research Income Research Quality and Impact
<b>Our People</b>	All Injury Frequency Rate Engagement
<b>Our Social Responsibility</b>	Underlying Operating Result Community and Partner Sentiment



## Faculty of Science and Health

### School of Allied Health, Exercise and Sports Sciences

The Faculty of Science and Health delivers flexible, innovative [teaching programs](#), which provide graduates with the skills and knowledge to build a career, advance their profession and contribute to their community. We currently have more than 9000 students and over 500 staff dedicated to advancing scientific knowledge.

We are a leader in strategic and applied [research](#) in a wide array of sciences. We enhance and extend knowledge, train and educate future researchers and provide scientific solutions to current challenges. We achieve this through ethical practice, professional collaborations, industry involvement and a commitment to continual improvement.

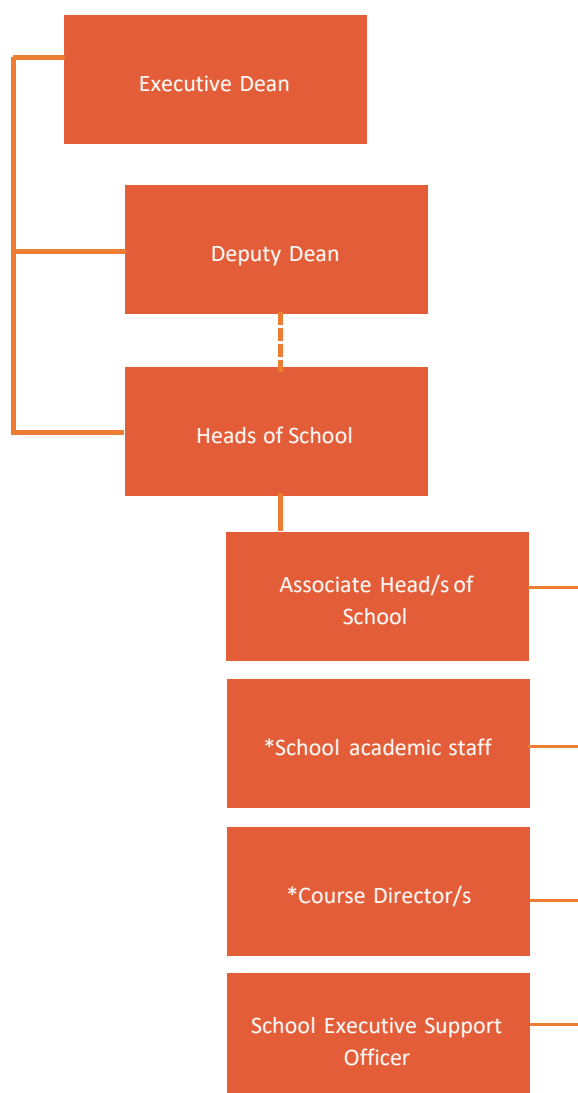
We also provide a range of health and other services to our regional communities through our [enterprise](#) activities.

The School of Allied Health, Exercise and Sports Sciences has a diverse range of staff who work together in the pursuit of excellence in teaching, research, and community engagement. The School is focused on five professional courses including exercise science and physiology, occupational therapy, physiotherapy, podiatry, and speech pathology.

Staff in the School of Allied Health, Exercise and Sport Sciences are committed to working with regional and rural communities to train and graduate future health professionals; we use research to find answers to community questions; and we work together to support people to become agents for positive change within their community.



## Organisational chart



## Reporting relationship

**This position reports to:** Head of School, School of Allied Health, Exercise and Sports Sciences

**This position supervises:** Nil

## Key working relationships

- Head of School
- Associate Head of School
- Course Director



- Head of Discipline
- Faculty and School staff

## Position overview

The Lecturer in Podiatry will actively engage in teaching, curriculum development and student engagement related to the podiatry course in the School of Allied Health, Exercise and Sports Sciences. The Lecturer will be expected to use blended models of subject delivery in teaching students, liaise effectively with the stakeholders of the course, and participate in the administration and ongoing curriculum development aligned to the strategic direction of the School.

The successful candidate must have substantial experience in podiatric practice with a sound knowledge of podiatric medicine, capacity to teach across a range of areas of podiatry practice, willingness to undertake professional development for Endorsement for Scheduled Medicines, commitment to regional, rural and remote health and practice, and capacity and willingness to be involved in podiatry workplace learning in collaboration with the workplace learning team.

## Principal responsibilities

- Apply Charles Sturt University learning and teaching methodologies, processes, technologies and tools to deliver high quality student-centred learning opportunities in the relevant discipline and as required to meet the teaching needs of the University.
- Demonstrate scholarly activity through excellent teaching in a range of delivery modes, which may include face to face and online teaching and assessment.
- Build strong professional relationships with students and provide timely and appropriate consultation and feedback.
- Contribute to collaborative processes to design, deliver and continually improve high quality courses and learning experiences for students. This also includes active contribution to the governance, marketing and promotion, and administrative activities to facilitate the work of the Faculty/School.
- Contribute to high performing multidisciplinary teams with an outcome focus and the development of a respectful, trusting, and collaborative working environment.
- Provide management, as appropriate, in the convening, coordination and delivery of subjects and/or courses. This may include coordinating and/or leading other staff including casual academic staff.
- Develop and foster relationships with a range of stakeholders including community, government departments, and professional bodies that bring direct benefit to the strategic work of the University, in terms of teaching, workplace learning, course profile and/or areas of research strength.
- Maintain a sound and current knowledge and understanding of podiatry through industry engagement and/or scholarly activities and/or similar.
- Participate in workplace learning for podiatry students, in collaboration with the podiatry workplace learning team.
- Contribute to the development and improvement of policy and practice through involvement in professional/industry associations, accreditation authorities, conference organisations, advisory bodies, and national or international delegations, consistent with the University's Outside Professional Activities Policy.
- Other duties appropriate to the classification as required.



## Role-specific capabilities

<b>Focus on service</b>	<b>Strive to meet needs and exceed expectations of our students, communities and colleagues (performance focus, quality outcomes, student welfare, equity and conduct).</b>
<b>Live our values</b>	Uphold the Charles Sturt University values daily in our own behaviours and interactions with others.
<b>Network</b>	Bring people together and build relationships that deliver desired benefits and outcomes.
<b>Listen closely</b>	Dig deep to understand others, using self-insight to build team spirit and recognise efforts.
<b>Learn and research</b>	Learn rapidly, gather information, understand rapidly, manage knowledge, foster organisational learning
<b>Plan and organise</b>	Set objectives, plan, establish contingencies, manage time, resources and people, monitor progress.

## Physical capabilities

The incumbent may be required to perform the following.

- Work in other environments beyond your base campus, such as other campuses.
- On occasion drive a vehicle distances up to 500km per day within the terms of the university's [Driver Safety Guidelines](#)



## Selection criteria

Applicants are expected to address the selection criteria when applying for this position.

### Essential

- A. A doctoral or masters qualification relevant to podiatry or equivalent accreditation and standing, AND current practising registration as a podiatrist with the Australian Health Practitioner Regulation Agency (Ahpra).
- B. Record of active engagement in professional activity relevant to podiatry, which demonstrates developing capacity to make autonomous contributions.
- C. Experience in, and knowledge of, contemporary podiatry practice and research, with an understanding of working in remote, rural and regional contexts.
- D. Demonstrated ability to contribute to course and subject design, and to deliver high quality student-centred learning and teaching at an undergraduate level that includes the capacity to incorporate new technologies and new approaches to teaching and learning, and the ability to teach across areas.
- E. Understanding of the importance of workplace learning for podiatry students and the capacity and willingness to participate in workplace learning, in collaboration with the workplace learning team.
- F. Demonstrated ability to build effective relationships and to work as a collaborative team member.

### Desirable

- G. Previous academic experience.



