

ANU wants you

INFORMATION FOR
PROSPECTIVE CANDIDATES

**Director, School of Regulation
and Global Governance**

ANU COLLEGE OF
ASIA & THE PACIFIC



Australian
National
University

Welcome to ANU

Thank you for considering the position of Director, School of Regulation and Global Governance (RegNet) at the Australian National University (ANU).

As the Dean of the ANU College of Asia and the Pacific, I welcome your interest in the position of Director, School of Regulation and Global Governance (RegNet).

The Director holds a significant place within the School and the College. The School undertakes interdisciplinary research and education in governance and regulation associated with major social and environmental issues. RegNet harnesses deep disciplinary expertise alongside a world renowned approach to interdisciplinarity – drawing critically upon theory and methodologies from a range of fields. The School's staff provide advice to Government and subject matter experts are regularly called upon for media commentary.

The Director, RegNet, is more than an academic overseer; the Director plays a critical role in the delivery of world-class education to the University's student body. As a key contributor to the success of the ANU College of Asia and Pacific, the School requires leadership befitting its influence and accomplishments.

The successful candidate will be an internationally recognised academic and will bring commitment, new ideas and enthusiasm to the role. As Director, you will be guaranteed my unequivocal support to continue to develop the strategic direction for the School.

If you are a passionate and strategically-oriented academic seeking a challenging and rewarding leadership role in a high-profile, research-intensive academic environment, I strongly encourage your application.



Professor Michael Wesley

Dean, ANU College of Asia & the Pacific
The Australian National University



Introducing ANU

INFORMATION FOR PROSPECTIVE CANDIDATES

ANU was established by an Act of the Federal Parliament in 1946. Its founding mission was to be of enduring significance in the post-war life of the nation, to support the development of national unity and identity, to improve Australia's understanding of itself and its neighbours, and to contribute to economic development and social cohesion. In the seven decades since, the University has cemented its unique national position and its standing as one of the world's finest institutions, validating the mandate and the faith of its founders.

Ranked in the top 25 universities globally, the first Australian university to be recognised in this elite tier, ANU continues to be an academic resource for the whole of Australia. The University can claim four of the seven Nobel prizes awarded for work undertaken in Australia alongside numerous other academic distinctions and innovations that have helped nurture the unique research culture for which our University is renowned.

Our focus on excellence in research and education ensures our graduates are in demand the world-over, and are well-prepared to address complex contemporary challenges. We encourage in them a leadership and service ethos which characterises ANU more broadly, framed by our responsibilities as a recipient of the National Institutes Grant from the federal government.

Among these responsibilities is to work to enhance Australian society in all parts of our nation. The land on which our campus stands has been a meeting place for hundreds of generations over thousands of years, a legacy and tradition we honour, celebrate and continue, particularly through our renewed partnership with Indigenous Australia.

Our physical campus environment defines much of the character of the ANU community. ANU is among the most residential universities in Australia. We will nurture this asset, and have made a strategic commitment to create an unrivalled campus environment.

At ANU, we are ambitious for our future, and for our nation's future. We will continue to strive to be the excellent institution Australians rightly expect their national university to be.

Our Vision

- > Contemporary ANU will sit among the great universities of the world, and be defined by a culture of excellence in everything that we do.
- > We will be renowned for the excellence of our research, which will be international in scope and quality, always measured against the best in the world. Our research investment will be strategic, taking a long-term view and focus on high-quality activities, high-impact infrastructure and areas of high national importance.
- > We will be renowned for the excellence of our undergraduate and graduate education: excellence in student cohort, excellence in teaching, excellence in student experience, and excellence in outcomes.
- > We will be renowned for the quality of the contribution our research and education make to societal transformation. We will identify emerging areas of need

for the nation and provide research and education that will equip Australia to cope with challenges not yet imagined.

- > ANU research, education and contributions to public policy-making will change Australia and change the world. It will have impact.

Our Values

- > We bring a distinctive excellence to our work and have the confidence to pursue original ideas.
- > We are inclusive, open and respectful, reflecting the diversity of our nation.
- > We are committed to integrity and ethical behaviour.
- > We value, enable, reward and celebrate collegiality.
- > We embrace informed risk-taking in pursuit of our objectives.
- > We are committed to better outcomes for our community, the environment, our nation and the world.
- > We are committed to the service of our nation, through original thinking and through courage in advancing our ideas.

Location

The University campus has over 200 buildings and occupies 145 hectares adjacent to the city centre of Canberra. The University also has a number of smaller campuses:

- > Mount Stromlo Observatory (west of Canberra)
- > Siding Spring Observatory (near Coonabarabran, western New South Wales)
- > North Australia Research Unit (Darwin, Northern Territory)
- > Kioloa (coastal campus near Bawley Point, on the New South Wales South Coast)
- > ANU Medical School – Canberra Hospital
- > ANU Medical School – Calvary Hospital
- > Health Facilities in South East New South Wales

Partnerships

The University has strong links with leading research institutions including the International Alliance of Research Universities:

- > ETH Zurich
- > National University of Singapore
- > Peking University
- > University of California, Berkeley
- > University of Cambridge
- > University of Cape Town
- > University of Copenhagen
- > University of Oxford
- > University of Tokyo
- > Yale University

Academic colleges

ANU has seven academic colleges, each housing the schools and research centres that contribute to various broad disciplines. The ANU Colleges link research and teaching at undergraduate, postgraduate and higher degree levels. They undertake globally significant research and provide education programs at the highest standards. Reflecting its national significance and multi-disciplinary nature, in addition to its seven colleges, ANU has established the National Centre for Indigenous Studies.



ANU College of Arts & Social Sciences

The ANU College of Arts and Social Sciences (CASS) is the research and education college for the broad disciplines of the creative arts, humanities and the social sciences. The College has two research schools: the Research School of Social Sciences and the Research School of Humanities and the Arts.

> cass.anu.edu.au

ANU College of Asia & the Pacific

The ANU College of Asia and the Pacific (CAP) hosts the largest assembly of scholars dedicated to working on Asia and the Pacific in the English-speaking world. The College comprises four Schools: the School of Culture, History and Language; the Coral Bell School of Asia Pacific Affairs; the Crawford School of Public Policy; and the School of Regulation and Global Governance (RegNet). The Australian Centre on China in the World is also based in the College.

> asiapacific.anu.edu.au

ANU College of Business & Economics

The ANU College of Business and Economics (CBE) seeks to advance knowledge through high quality education and research in the closely related areas of accounting, actuarial studies, business information systems, econometrics, economic history, economics, finance, international business, management, marketing and statistics. Its four Research Schools research and teach in these disciplines.

> cbe.anu.edu.au

ANU College of Engineering & Computer Science

The ANU College of Engineering and Computer Science (CECS) undertakes basic and applied research in information and communications technologies, materials and manufacturing, formal methods and logic, machine learning and vision, robotics and energy systems. CECS comprises the Research Schools of Electrical, Energy and Materials Engineering; Aerospace, Mechanical and Environmental Engineering; Computer Science, and the 3Ai and Cyber Institutes.

> cecs.anu.edu.au

ANU College of Health & Medicine

The ANU College of Health and Medicine (CHM) works across the spectrum of medicine and health-related fields, working in partnership with the health sector at local, national and international levels. It comprises the ANU Medical School, the John Curtin School of Medical Research, the Research School of Psychology and the Research School of Population Health.

> chm.anu.edu.au

ANU College of Law

The ANU College of Law (CoL) is Australia's national law school, committed to legal research and education at the highest level, and to striving for continuous improvement in the law for the benefit of national and international communities.

> law.anu.edu.au

ANU College of Science

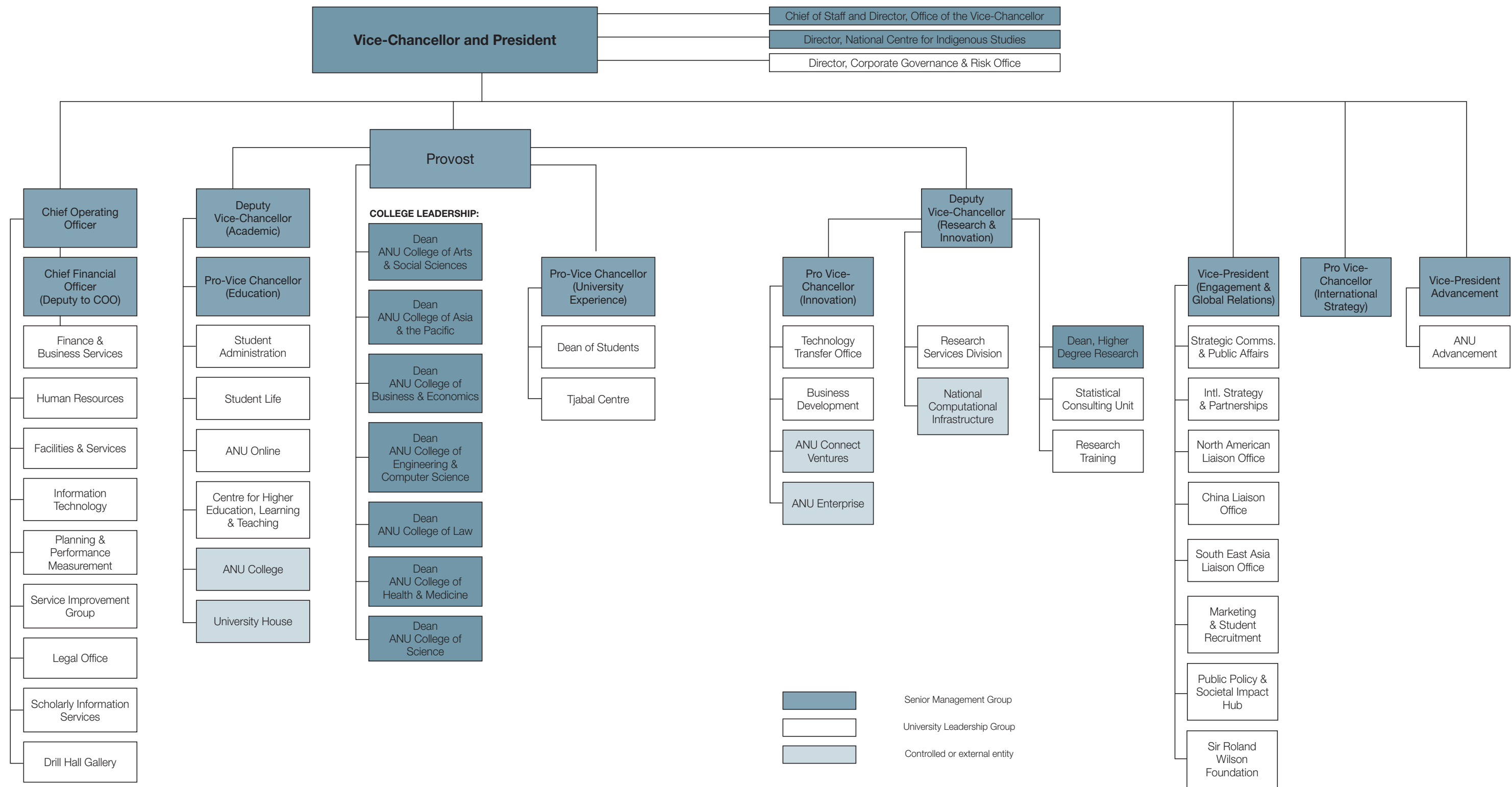
The ANU College of Science (CoS) focuses on scientific education and research of global importance, supported by extensive international networks and world class facilities. CoS includes the Research Schools of Physics and Engineering; Earth Sciences; Chemistry; Astronomy and Astrophysics; and Biology. The Fenner School of Environment and Society, the Mathematical Sciences Institute, and the Australian Centre for the Public Awareness of Science are also within the CoS.

> cos.anu.edu.au



Further information can be found at
anu.edu.au/about/academic-colleges

ANU Executive Structure



The Director, School of Regulation and Global Governance (RegNet)

As Director, School of Regulation and Global Governance you are responsible for enabling academic staff to achieve excellence in research, educational and community engagement outcomes for the School in line with the strategic goals of the School, College and University.

The Director’s responsibilities include academic leadership, strategic planning, international outreach, and partnership with multiple stakeholders within and outside the University.

The Director provides effective management of the academic, educational, financial, physical and staff resources of the School. In addition to leading the School’s leadership and management group, the Director will also be part of the executive leadership group of the ANU College of Asia and the Pacific and the ANU leadership group. The Director reports to the Dean of the College of Asia and the Pacific.

The Director, School of Regulation and Global Governance will have primary responsibility for:

- > Encouraging innovative research activity, and enabling outstanding research performance within the School.
- > Maintaining and promoting a strong culture of research in the School through high quality research performance, including acquisition of grants and consultancies.
- > Supporting and promoting a culture of innovative research-led education programs.
- > Maintaining the delivery of sustainable educational programs (graduate and Higher Degree Research programs) and ensuring the quality of the curriculum of these programs.
- > Implementing appropriate outreach strategies and taking actions to enhance the national and international profile of the School, College and University.
- > Managing the operational activities, administration and governance, HR requirements and the financial planning for the School.
- > Aligning staffing resources and expertise to ensure achievement of the strategic goals of the School.
- > Membership of the College Executive to input into the strategic directions and planning of the College and ensure alignment of the Schools strategic plan.
- > Supporting the Chairs of the Research and Education Committees of the College to implement the Colleges education and research planning.
- > Maintaining a collegial and consultative environment in the School.

Selection criteria

- 1.**
An outstanding academic in a relevant discipline and with an international reputation for scholarship that is appropriate to provide academic leadership.
- 2.**
A proven ability to enhance and develop the national and international reputation and performance of education and research institutions.
- 3.**
Effective operational and people management skills with sound financial planning capability and the ability to oversee administration and governance.
- 4.**
Demonstrated experience and expertise in the provision of strategic planning, management and leadership skills within a high profile academic environment, including management of large scale university research and educational programs.
- 5.**
Demonstrated ability to support research and education activities effectively, within a changing environment for research and teaching.
- 6.**
Ability to articulate a coherent and realistic vision for the School, which aligns with the College and ANU Strategic Plans.
- 7.**
A record of effective communication and the ability to influence a broad range of stakeholders in order to secure strategic outcomes.
- 8.**
Highly developed interpersonal skills with the ability to work with, and to lead teams in a collegial fashion.
- 9.**
Demonstrated achievement in relation to incorporation of Equal Opportunity principles into strategic planning and the capacity to accept devolved responsibility for the achievement of equity and diversity.

ANU College of Asia & the Pacific

The ANU College of Asia & the Pacific has driven Australia’s engagement and understanding of its neighbourhood. The work conducted here has established the University as a global centre of excellence in research, teaching and influence on Asia and the Pacific.

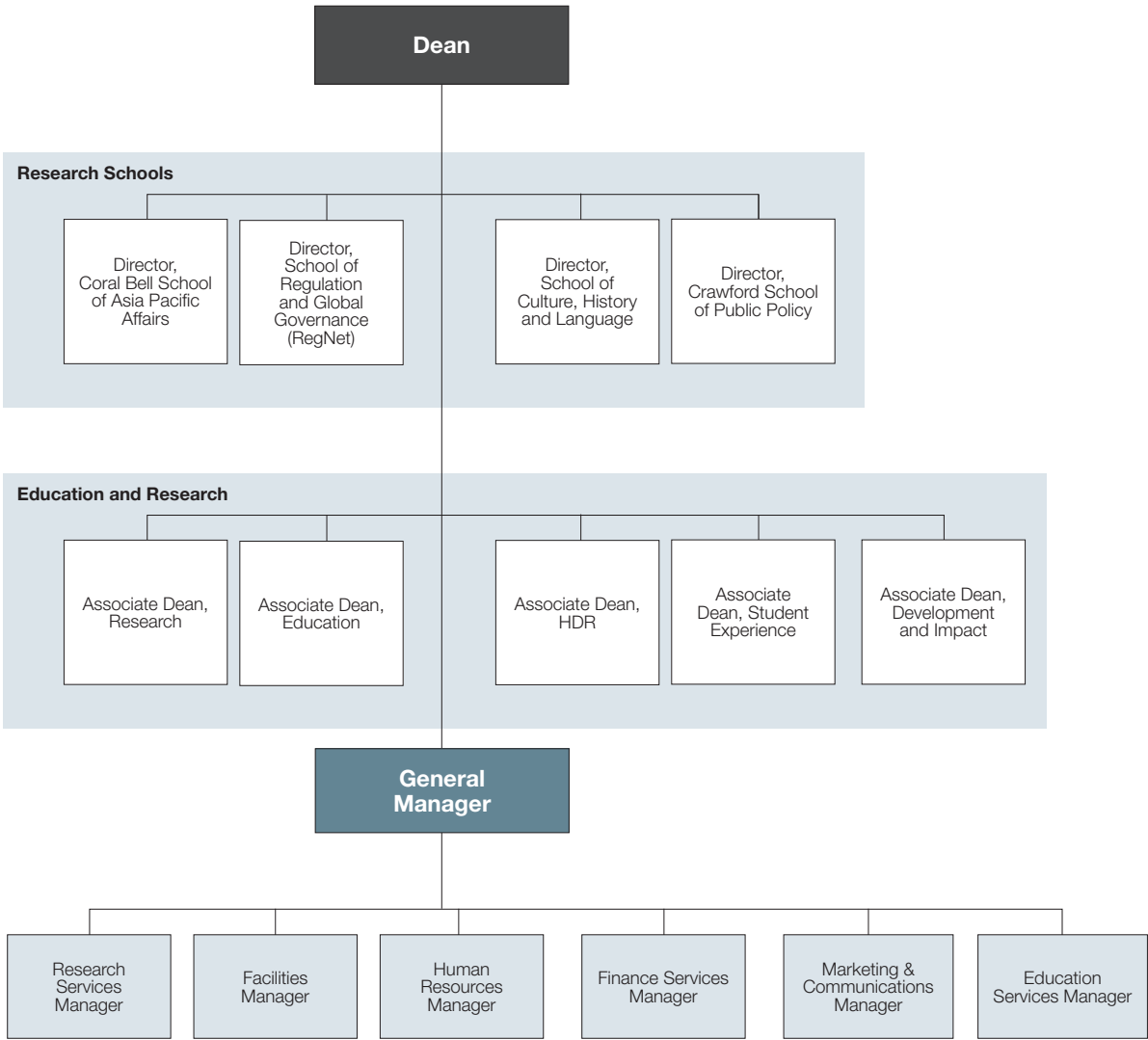
The College has its roots in the University’s Research School of Pacific Studies and the School of Oriental Languages, established in 1946 and 1952 respectively. The Research School of Pacific Studies was a founding institution of ANU, formed to drive Australia’s engagement with and understanding of its neighbourhood. The School of Oriental Languages was established to train diplomats and public servants in Chinese, and later Japanese, Bahasa Indonesia and Malay. Ten years later, the School became the ground-breaking Faculty of Asian Studies, the first and only faculty at an Australian university dedicated to a regional specialisation. In 2010, the Research School of Pacific and Asian Studies and the Faculty of Asian Studies merged to form the College of Asia and the Pacific.

Today, the College hosts the largest number of regional experts and specialist academic programs in the English-speaking world, and plays a vital role in informing public policy

and Australia’s intellectual engagement with the societies, cultures and economies of Asia and the Pacific. The ANU Library also holds one of the best Asian collections in the world. Although the College remains unique for its regional focus, it also has an unwavering commitment to disciplinary strength, particularly in political science, economics, history, anthropology, law, archaeology and linguistics, with an enviable international standing across all these disciplines.

With the College’s focus on Asia and the Pacific more relevant now than ever, ANU is indisputably the best place to prepare the next generation of regional specialists for the challenges of the Asian century.

» View the ANU College of Asia & the Pacific - [Read it here](#)



School of Regulation and Global Governance (RegNet)

The ANU School of Regulation and Global Governance (RegNet) undertakes interdisciplinary research and education in governance and regulation associated with major social, environmental and health challenges. RegNet is renowned for our paradigm-shifting conceptualisation of regulation and governance: conceiving that there are many different institutions and actors at multiples scales involved in a plethora of formal and informal mechanisms that steer the course of events and behaviours. Our work is based on principles of social justice, environmental sustainability and human wellbeing. We test and develop theory; provide rigorous qualitative and quantitative empirical evidence on important issues, and proactively engage in the policy debates in Australia, the Asia Pacific region and internationally. Fundamental to the success of the school is the supportive, inclusive, collegial and engaging culture that includes all research staff, students, professional staff, visitors and external partners.

> Research

RegNet is internationally acclaimed for excellence in interdisciplinarity and methodological plurality. We draw critically upon theory and methodologies from a range of fields including anthropology, criminology, economics, international relations, law, philosophy, political science, psychology, public administration, public health, and sociology.

We focus on long-term projects on issues that matter to people's lives in Australia, the Asia-Pacific region and the world. Through examining the regulatory governance labyrinth across multiple issues and multiple scales, these programs of work offer empirically-informed exploratory and normative insights for the field of regulatory governance broadly, and for sector specific issues.

Our research is organised around major clusters and centres. Currently the research clusters are in the following thematic areas: Climate, energy & the environment; Law, justice & human rights; Society, safety & health; Trade, investment & intellectual property. We welcome new research directions.

We host a number of interdisciplinary research centres, such as the Centre for Restorative Justice, the Menzies Centre for Governance, Policy and Health Equity, the Cybercrime Observatory, the Centre for International Governance and Justice and the NHMRC Centre for Research Excellence in the Social Determinants of Health Equity.

> Education

RegNet has a strong foundation in research training and research-led education, with a thriving PhD program, and an exciting move into Masters level education which began in 2018.

The PhD students are considered an integral part of RegNet's vibrant intellectual community and we pride ourselves on having students who engage in an interdisciplinary environment, addressing important societal issues.

Our postgraduate offerings include the Masters in Criminology, Justice and Regulation and a Specialisation in Regulation (taught as part of the Masters in Public Policy, which is run through the Crawford School of Public Policy).

> Engagement

RegNet is renowned for impactful collaboration and engagement. RegNet scholars work through networks of networks to inform public debate, and policy development and implementation. We engage in thoughtful dissemination and collaboration with key stakeholders beyond the academy, including government and non-government representatives, the private sector, philanthropic bodies and our alumni.

RegNet staff and students work locally, nationally and internationally, with current collaborations in Afghanistan, Australia, Bangladesh, Cambodia, China, Democratic Republic of Timor-Leste, Fiji, India, Indonesia, Japan, Mongolia, Myanmar, Nepal, Pakistan, Papua New Guinea, Philippines, Republic of Korea, Thailand and Vanuatu. We also have projects and partners in Africa, Europe, and North and South America.

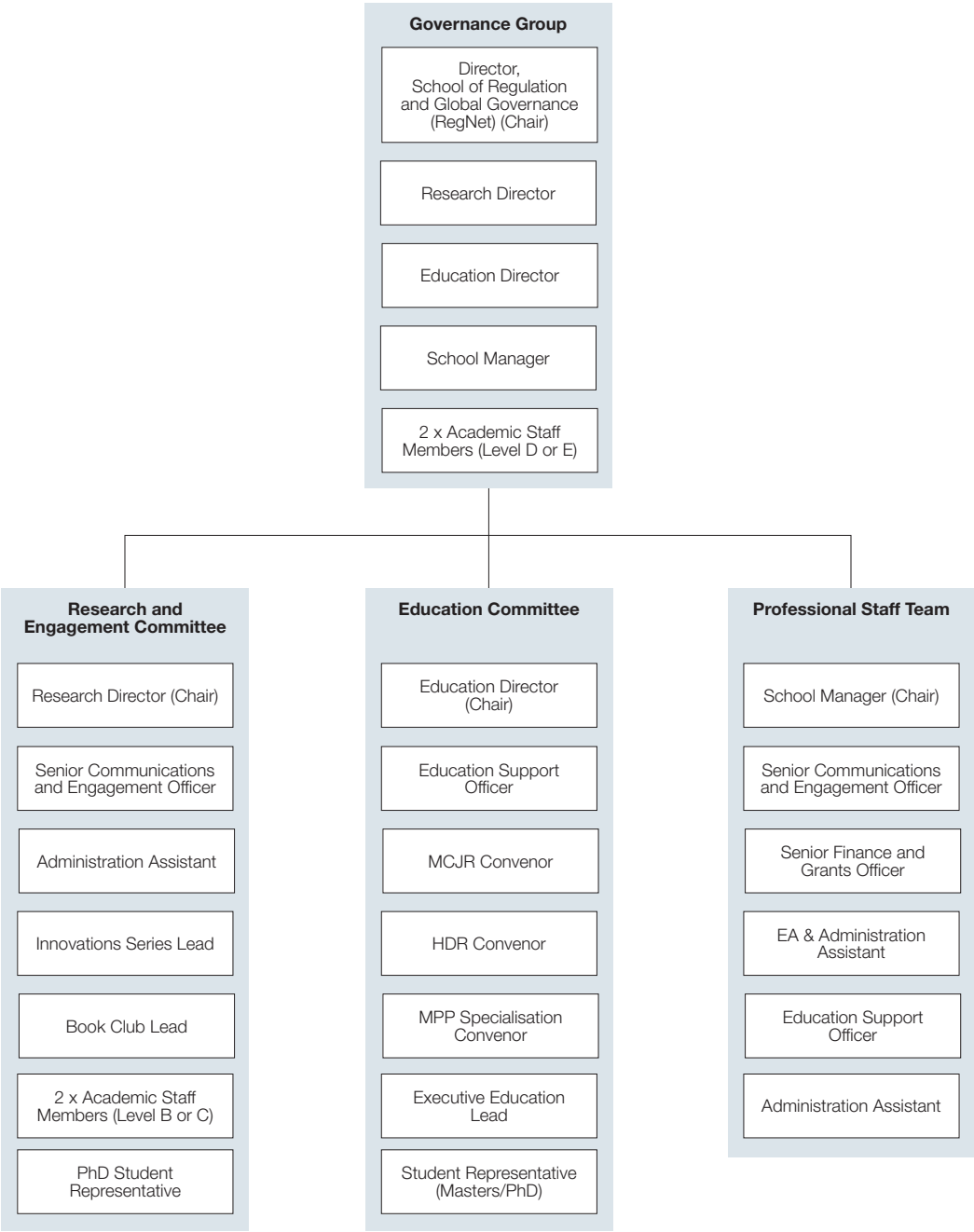
Our regular Intersections Seminars, Radio National Big Ideas panels, and Policy workshops provide important opportunities for cross-pollination of ideas and research collaborations and also give insight on regulation and policy processes from perspectives beyond academia. Many of the RegNet academic staff are regularly in the print, radio and social media.

» [View the School of Regulation and Global Governance - Read it here](#)



School of Regulation and Global Governance

Governance Structure



One of the worlds most liveable cities

The power of surprise

Canberra has the power to surprise, with its abundance of food, wine, art, culture, ideas and innovation. As an evolving city, this element of surprise continues even once you've made Canberra your home, with new developments, events and opportunities constantly emerging to keep life interesting.

About Canberra

Canberra is also a planned city – designed to maximise opportunities for work and play. As our Nation's Capital, big ideas emerge, circulate and grow here, thanks to unique links between leading thinkers in business, government, education and research. Our dynamic economy, highly educated workforce and an innovative business culture provide career and business opportunities unique to Canberra.

Our healthy appetite for outdoor pursuits is enhanced by the natural resources available: from sailing on Lake Burley Griffin, mountain biking at the world class Mount Stromlo facility or heading up to the Snowy Mountains for a day on the slopes. We are also home to most of Australia's major national cultural institutions, with whom the University has a close relationship, and a cultural calendar overflowing with international exhibitions, arts festivals and entertainment.

Where to Live

The architects who designed Canberra, Walter and Marion Burley Griffin, had a master plan to create a series of 'satellite cities' separated by nature reserves and connected with major roads. Today their vision lives on, with Canberra divided into seven distinct regions of residential suburbs, each serviced by a central business district.

The resulting benefits are that commuting times are short. Employment hubs are virtually on your doorstep and recreational facilities are within walking distance, regardless of where you live.

Find information on each district and the suburbs contained within them through the ['Explore Canberra' map](#).

Education and Childcare

Canberra nurtures the pursuit of dreams from the ground up. Here families are provided with the supportive services, facilities and environments to raise happy, inspired and resilient children. Community is crucial for the support of families and Canberra has a number of ways to connect families with each other through playgroups, family events and activities.

Find out more about Canberra's excellent childcare, preschool and school system [here](#).

Canberra has the lowest commuting times of all Australia's major cities

More than 25% of Canberra residents were born overseas

The region is known for four distinct seasons, enjoying 246 days of clear, crisp sunshine



Further information about Canberra visit canberra.com.au

How to apply

The appointment of the Director, School of Regulation and Global Governance is being supported by Kent Vidler, Senior Recruitment Consultant, ANU Recruitment Services.

To submit an application for this role, please provide the following information:

1. A candidate statement which outlines both your vision for the role and an overview of your experience and skills as it relates to the parameters of the role and selection criteria.
2. A detailed CV.
3. Three referees including their email and phone contact details.
Referees will only be contacted after prior consultation with the candidate. It is the candidate's responsibility to ensure referees are willing to provide reports when contacted.
5. An indication of the earliest date on which you could commence in the position.

Apply online: www.anu.edu.au/jobs Reference #530897

For a confidential discussion regarding this role and the application process, please contact:

Kent Vidler
Senior Recruitment Consultant, ANU
Recruitment Services
E: executivesearch@anu.edu.au
T: +61 2 6125 9997

Anticipated timeframe for the appointment process.

Applications close: 31 July 2019
Shortlisting: Late July
Interviews: Late August, in
Canberra ACT
References and negotiation: Thereafter.

ANU reserves the right to appoint by invitation.

On behalf of the University and as part of the application and appointment process, candidates may be requested to provide proof of their identity and citizenship and give permission for verification of their tertiary qualifications and a police background check.