

Senior Lecturer in Paramedicine

School of Biomedical Sciences

Faculty of Science

Classification	Level C
Delegation Band	Delegations and Authorisations Policy (see Section 3)
Nature of Employment	Continuing
Workplace Agreement	Charles Sturt University Enterprise Agreement
Date Last Reviewed	July 2019

Our University Values



Our Core Competencies

Charles Sturt University (CSU) staff are expected to demonstrate the following competencies:

Set Direction and Deliver Results

- Creating and innovating.
- Delivering results and meeting customer expectations.
- Entrepreneurial and commercial thinking.

Collaborate with Impact

- Relating and networking.
- Working with people.
- Persuading and influencing.

Lead Self and Others

- Adhering to principles and values.
- Deciding and initiating action.
- Adapting and responding to change.

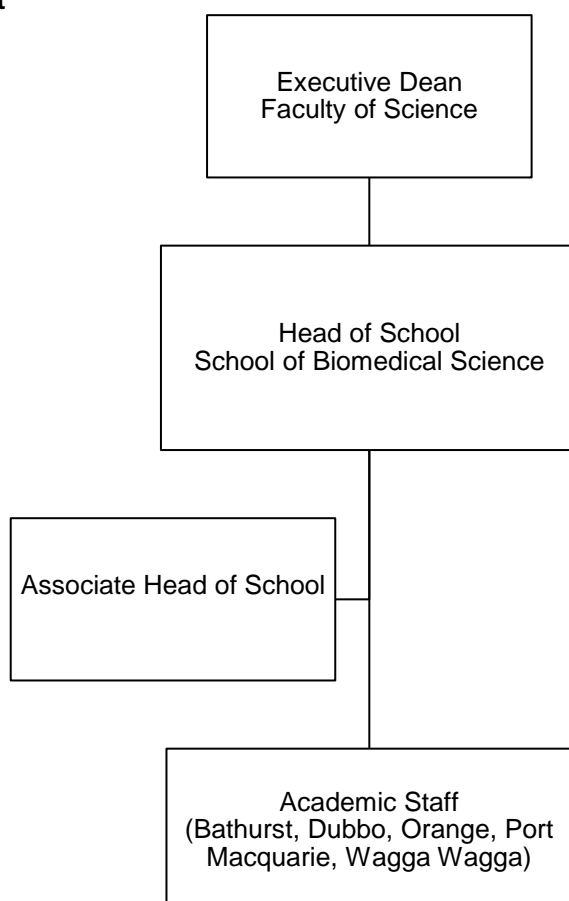
Faculty of Science

The Faculty of Science has more than 9000 students and over 500 staff dedicated to advancing scientific knowledge. It delivers flexible, innovative teaching programs designed to produce job-ready graduates for the professions. A leader in strategic and applied research in a wide array of sciences, it enhances and extends knowledge, trains and educates future researchers and provides scientific solutions to current challenges. The staff and students in the Faculty achieve this through ethical practice, professional collaborations, industry involvement and a commitment to continual improvement.

School of Biomedical Sciences

The School of Biomedical Sciences is a well-established, multi-campus, academic unit that offers undergraduate and postgraduate courses both onshore and offshore in pharmacy, medical science, food and nutrition, biotechnology, clinical science, clinical physiology, health services management, and paramedicine. The School is committed to enhancing its reputation as a high performing multidisciplinary school by having academics focused on providing quality education and being actively involved in a variety of medical, biotechnology and health based research programs that complement these courses.

Organisational Chart



Reporting Relationships

This position reports to: Head, School of Biomedical Sciences

This position supervises: Nil

Position Overview

The Senior Lecturer in Paramedicine will teach into the paramedicine programs that include the Bachelor of Paramedicine, Bachelor of Clinical Practice (Paramedics) (until late 2019), Graduate Diploma of Clinical Practice (Paramedic), Post Graduate Certificate in Paramedicine (with specialisations), Graduate Diploma in Paramedicine (with specialisations) and the Master of Paramedicine (with specialisations). Appointees may also be required to:

- Supervise honours, these are higher degree students;
- Teach in other postgraduate programs in areas where they hold suitable academic qualifications;
- Develop a body of research or professional activity relevant to paramedicine.

Principal Responsibilities

- Make a significant contribution to the development, implementation and promotion of CSU learning and teaching methodologies, processes, technologies and tools to deliver and lead high quality student centred learning opportunities in the relevant discipline and as required to meet the teaching needs of the University. Achieve excellence in teaching in a range of delivery modes, which may include face to face and online teaching and assessment;
- Supervision of Research Higher Degree students;
- Build strong professional relationships with students and provide timely and appropriate consultation and feedback;
- Contribute significantly to collaborative processes to design, deliver and continually improve high quality courses and learning experiences for students including the giving and receiving of constructive feedback;
- Provide leadership and manage the convening, coordination and delivery of subjects and/or courses, as required;
- Provide mentoring and coaching to support the academic development of colleagues;
- Establish and maintain strategic relationships and networks with a range of stakeholders including community, government and industry/professional bodies;
- Expand current knowledge and understanding of the relevant discipline through original contributions to industry engagement and/or scholarly activities or similar;
- Provide leadership and manage small research teams which contributes to the development of the profession, discipline and/or community;
- Conduct ethical, high quality research/creative works to his/her discipline at a national level through scholarship, publication and presentation.
- Develop and execute a research plan which aligns with CSU's Research Plan and objectives including pursuing funding opportunities and maintaining up-to-date research records within CSU's research database;
- Identify and create opportunities for collaborative research projects with internal and external researchers and stakeholders;
- Provide leadership and foster partnerships with the professions that bring direct benefit to the strategic work of the university, in terms of teaching, workplace learning, course profile and/or areas of research strength;
- Make a significant contribution to the development and improvement of policy and practice through involvement in professional/industry associations, accreditation authorities, conference organisations, advisory bodies, and national or international delegations, consistent with the University's Outside Professional Activities Policy;
- Develop, lead and/or evaluate continuing professional education and maintain professional accreditation;
- Lead external professional reviews;
- Engage in professional practice in a discipline or field for the purposes of improving/transforming professional practice and feeding back into teaching and/or practice across the professions OR which demonstrates the maintenance or development of significant advanced practice skills or improves/transforms practices within the profession and which informs teaching;

- Engage in professional activities linked to knowledge development and problem solving such as research with, for and about the profession and about professional practice; projects related to critical evaluation and enhancement of practice; collaborations with research colleagues and professions/industries/businesses; authorship/editorship;
- Undertake larger projects that enhance curricula and that are of particular benefit to the School or discipline, or projects that investigate practice and university teaching/curricula;
- Actively contribute to the governance, marketing and promotion, and administrative activities to facilitate the work of the Faculty/School.
- Other duties appropriate to the classification as required.

Physical Capabilities

The incumbent may be required to:

- Work in other environments beyond the school such as other campuses as well as possible car and air travel. It will include work with a diverse range of staff, students and community members.
- On occasion drive a university vehicle distances up to 500kms per day within the terms of the University's Driving Hours Guidelines and Policy available at <https://policy.csu.edu.au/document/view-current.php?id=184>.
- Physically able to sit for extended periods of time to perform reading, writing and computer related activities including keyboard and mouse operations;
- Physically able to stand for extended periods of time to perform lectures and practical activities;

Selection Criteria

Applicants are expected to address the selection criteria when applying for this position.

Essential Criteria for Appointment at Level C

- A. A doctoral qualification, relevant to paramedicine or equivalent accreditation and standing, with eligibility for registration with the Paramedicine Board of Australia.
- B. A record of significant achievement relevant to the discipline area, and at a national level, in the scholarship of teaching and/or research/creative works or professional activity.
- C. Evidence of and a demonstrated commitment to the delivery of high quality student centred learning and teaching.
- D. Significant knowledge and understanding of the paramedicine discipline gained through industry experience and/or scholarly activities or similar.
- E. Demonstrated ability to provide effective leadership in an academic setting and commitment to applying culturally respectful, inclusive and safe practices in the workplace.

Information for Prospective Staff

Your Application

E-recruitment is the method by which CSU manages its recruitment processes and it is preferred that all applications be lodged using this method. Please refer to www.csu.edu.au/jobs/.

If intending applicants are unable to access this website, please contact the HR Service Centre on 02 6338 4884.

Staff Benefits

CSU is committed to providing an employment environment that fosters teamwork, innovation, reflective practice, continual learning, knowledge sharing and opportunities for staff to achieve their full potential. CSU is committed to providing a flexible working environment that encourages employees to live a balanced lifestyle, combining work and family responsibilities.

To find out more: <http://www.csu.edu.au/jobs/working-with-us/benefits-and-rewards>.

Essential Information for Staff

- All employees have an obligation to comply with all the University's workplace health & safety policies, procedures and instructions and not place at risk the health and safety of any other person in the workplace;
- All employees are required to be aware of and demonstrate a commitment to the principles of equal opportunity in the workplace;
- All employees are to ensure the creation and maintenance of full and accurate records of official University business adheres to the University's Records Management Policies; and
- All employees are expected to undertake an induction program on commencement.

Further information regarding the policy and procedures applicable to Occupational Health and Safety and Equal Opportunity can be found on the CSU website <http://www.csu.edu.au/division/hr/>.

Further information regarding the policies and procedures of CSU can be found in the CSU Policy Library at: <https://www.csu.edu.au/about/policy>.

The following links are listed from [CSU Policy Library](#) on relevant specific policies:

- [Code of Conduct](#)
- [Staff Generic Responsibilities Policy](#)
- [Delegations and Authorisations Policy](#)
- [Outside Professional Activities Policy](#)
- [Intellectual Property Policy](#)