



THE UNIVERSITY OF  
**WESTERN  
AUSTRALIA**

Appointment of

# Dean, Graduate Research School

Information for candidates





Thank you for  
your interest in the  
position of Dean,  
Graduate Research  
School at The  
University of Western  
Australia (UWA).

# Welcome

Thank you for your interest in the position of Dean, Graduate Research School at The University of Western Australia (UWA).

It's an exciting opportunity to work with an institution at the most exciting and dynamic time in its history. With The University's Vision 2030 identifying the best ways to build on our strong reputation for excellence in teaching, learning and research, UWA is set to become an energetic centre for innovation, inspiring future students, staff and stakeholders alike to make a global impact.

Joining UWA will put you at the forefront of excellence, where you can challenge convention and make the most of unlimited possibilities. It's not just one of the top 100 universities in the world, it's an environment in which you can make a real difference – and encourage others to do the same.

We offer access to an exceptional support network committed to creating change, from membership in the Group of Eight – a coalition of leading Australian universities – to colleagues who are academic leaders in the broadest sense, having established international reputations as outstanding teachers and researchers.

We look forward to hearing from like-minded candidates.



Professor Dawn Freshwater  
Vice-Chancellor



# The University of Western Australia

**At UWA, you can work alongside dynamic and forward-thinking colleagues who, like you, are determined to challenge convention and drive innovation.**

The University is in the top 100 universities in the world and is one of Australia's most respected research institutions. We operate more than 130 research and training centres, and enjoy a broad range of successful industry partnerships. The strength of our research culture means we attract high levels of competitive funding, and receive roughly 80 per cent of all research funding to Western Australian universities each year.

UWA is 91st in the 2019 QS World University Rankings, climbing seven places in the last three years, and has maintained a perfect score of 100 in the International Faculty ratio (measuring the number of international staff per 100 faculty members). The Academic Ranking of World Universities 2018 places us 93rd, while the Times Higher Education (THE) World University Rankings rates us 134th globally. In the Good Universities Guide 2019 we gained a five-star rating in Student Retention, and maintained our five-star rating for Student-teacher Ratio and Student Demand.

At UWA, we help people make the most of the possibilities presented to them. We are a community driven by a desire to make the most of our collective potential and to contribute to the world's advancement. Join us and pursue your ambitions.

**[uwa.edu.au](http://uwa.edu.au)**







## Mission

To provide world-class education, research and community engagement, for the advancement of prosperity and welfare of our communities.



## Vision

To become recognised as one of the world's top 50 global universities by 2050.

# University governance and management

**The University is governed by the Senate, comprising up to 17 members from a range of backgrounds including community, staff, students and graduates.**

Chaired by the Chancellor, the Hon. Robert French, the key roles of the Senate are:

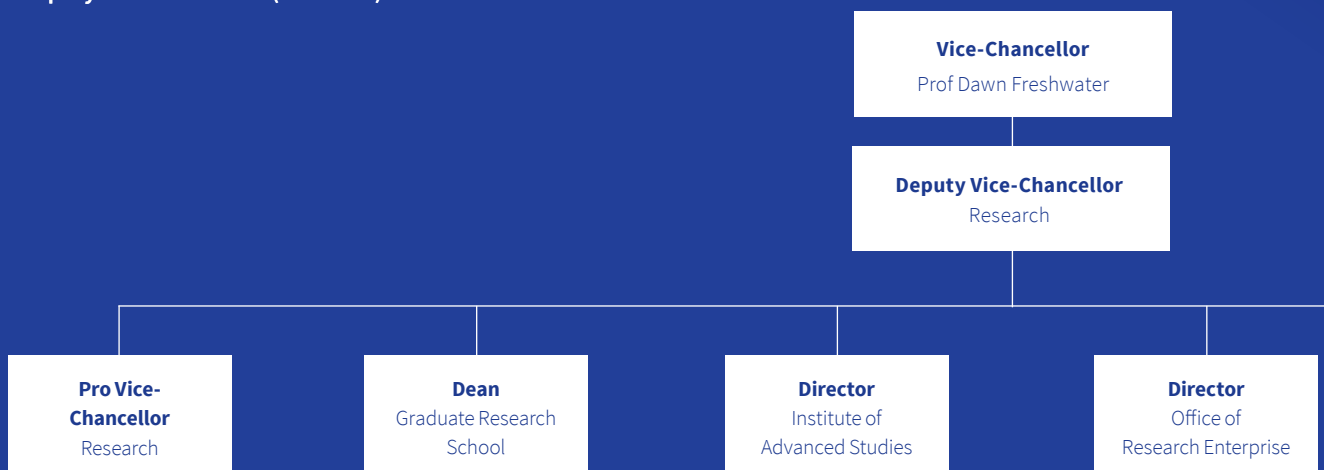
- providing a broad overview of strategic directions in the University
- overseeing corporate governance
- performance monitoring
- taking legislative responsibility
- supporting, guiding and monitoring the performance of the Vice-Chancellor

## Key stats

Student enrolments 2017	24,327
Total staff (FTE) 2017	3,264
Research publications 2017	5,594



## 2018 Deputy Vice-Chancellor (Research) Structure



# Key institutional networks

## Group of Eight

The Group of Eight is a coalition of leading Australian universities that advocate intensive research and comprehensive general and professional education.

[go8.edu.au](http://go8.edu.au)

## Matariki Network of Universities

This international group of seven universities across seven nations focuses on strong links between research and undergraduate teaching, promoting international best practice in research and education.

[matarikinetwork.com](http://matarikinetwork.com)

## Worldwide Universities Network

The major issues facing our planet are so great that no single institution or organisation can address them alone. The WUN brings together world-leading academic partners to address these global challenges.

[wun.ac.uk](http://wun.ac.uk)



**University  
Librarian**

**Director**  
Oceans Institute

**Directors**  
Research Infrastructure  
Centres

**Director**  
Institute of  
Agriculture

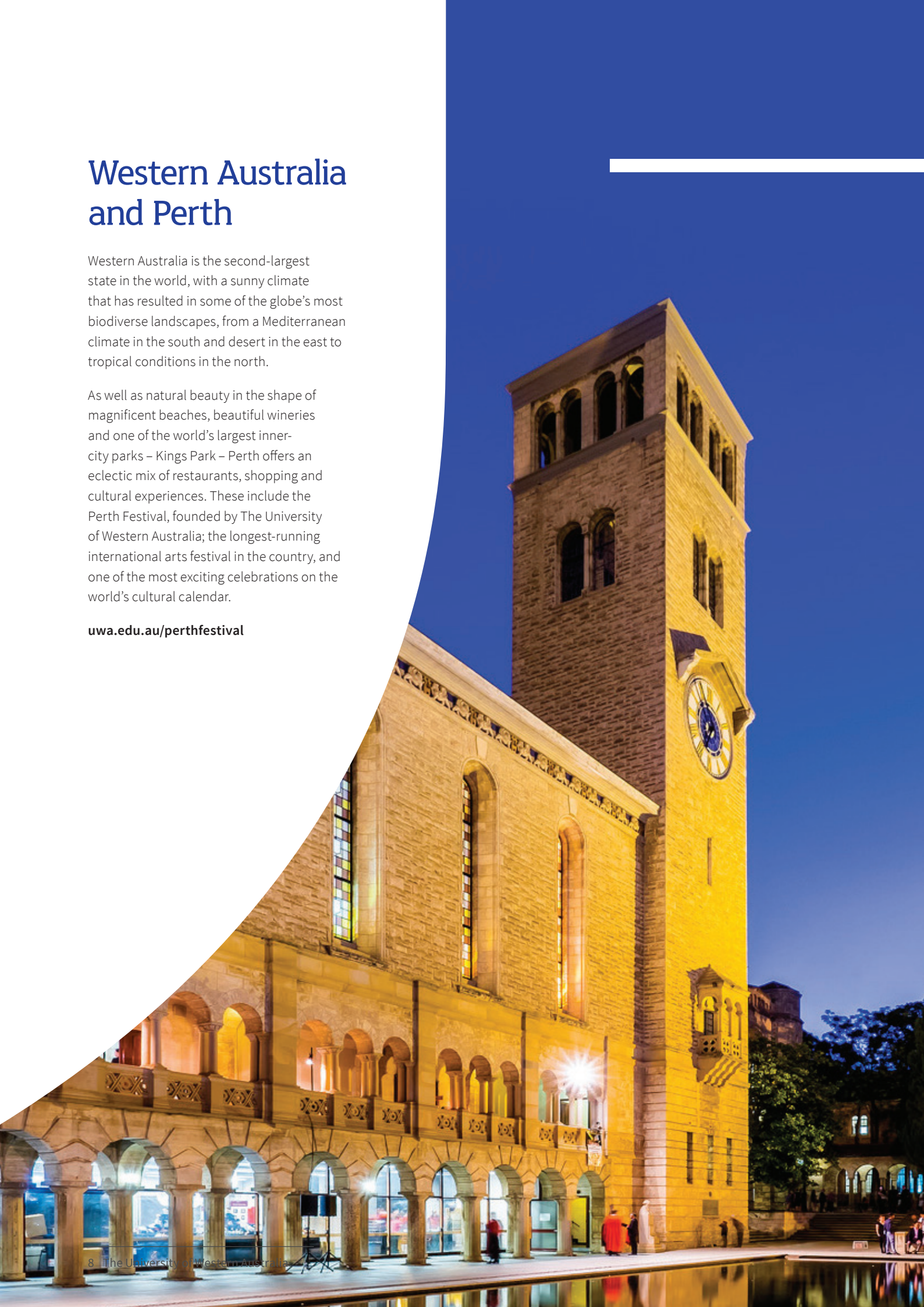


# Western Australia and Perth

Western Australia is the second-largest state in the world, with a sunny climate that has resulted in some of the globe's most biodiverse landscapes, from a Mediterranean climate in the south and desert in the east to tropical conditions in the north.

As well as natural beauty in the shape of magnificent beaches, beautiful wineries and one of the world's largest inner-city parks – Kings Park – Perth offers an eclectic mix of restaurants, shopping and cultural experiences. These include the Perth Festival, founded by The University of Western Australia; the longest-running international arts festival in the country, and one of the most exciting celebrations on the world's cultural calendar.

**[uwa.edu.au/perthfestival](http://uwa.edu.au/perthfestival)**





# Role, key responsibilities and selection criteria

---

## Role

Under the direction of the Deputy Vice-Chancellor (Research), the Dean, Graduate Research School will provide academic leadership and management to the Graduate Research School.



## Key responsibilities

- To provide academic leadership and management of the Graduate Research School, in relation to strategic planning, budget and finance, the allocation of resources, service delivery, accountability and staff development
- To provide strategic leadership for all aspects of research training for higher degree by research students
- To Chair relevant committees including the Board of the Graduate Research School
- To provide advice to the Deputy Vice-Chancellor (Research) and the University on policy and other matters relating to the Graduate Research School, research students and research scholarships
- To support the work of the Deputy Vice-Chancellor (Research) across the Research portfolio and to work as part of the University's Research Executive team
- To act as a representative of the University in external forums as requested by the Deputy Vice-Chancellor (Research)
- To assume administrative responsibility for other academic and service facilities as may be required by the Deputy Vice-Chancellor (Research)
- To ensure adherence to the legislative requirements, policies and procedures of the University
- Other duties as required





## Selection criteria

The successful candidate will demonstrate:

- Appropriate academic qualifications or significant experience with an outstanding record of performance in research training activities relevant to this role
- Outstanding leadership and management skills, including the capacity to implement change in a complex environment and to think strategically and implement plans
- Strength in influencing, negotiation and decision-making with an ability to resolve complex issues
- Thorough appreciation of, and sensitivity to, the Higher Education environment in Australia and internationally with an understanding as to key drivers, decision making environments and bodies, and future challenges
- Capacity to work as part of a team and particularly an ability to play different roles in a team – as required by the circumstances
- The ability to represent the University's interests effectively in dealing with external stakeholders at all levels
- Credibility and accountability, with the outstanding personal qualities of openness, respectfulness and integrity and a commitment to equity, diversity and collegiality
- Outstanding communication, stakeholder and relationship management skills, and their application to establish and maintain effective internal and external networks

## Special requirements

- Undertake interstate and overseas travel
- Weekend work as required

## Conditions of employment

An attractive and flexibly constructed remuneration package will be negotiated and will include:

- An appointment for a period of five years
- Employer contribution to superannuation of 17%
- Recreation leave of 20 working days per annum
- Long Service Leave
- Relocation assistance including airfares for the appointee and dependents (if applicable)



## Applications

Thank you for your interest. If you wish to proceed, the following information will assist you with your application.

Your application must include the following:

- A covering letter or statement that clearly demonstrates the extent to which you satisfy each of the selection criteria
- A curriculum vitae that provides your personal details, qualifications and work history
- The names, email, mailing addresses and telephone contact details of three referees who may be contacted for a confidential report

Please note that your permission will be sought before referees are contacted.

The University of Western Australia provides visa sponsorship for international appointees.

## Lodging your application

Applications must be submitted online at: [jobs.uwa.edu.au/executive](https://jobs.uwa.edu.au/executive)

The closing date for the submission of applications is: **Monday 29 October 2018.**

Enquiries and requests for further information may be addressed in confidence to:

Professor Robyn Owens  
Deputy Vice-Chancellor (Research)  
Tel: +61 8 6488 2460  
Email: [dvcr@uwa.edu.au](mailto:dvcr@uwa.edu.au)



The University of Western Australia  
M053, 35 Stirling Highway  
Perth WA 6009