



# Position Description

## Lecturer or Scholarly Teaching Fellow in Paramedicine

School of Nursing, Paramedicine and Healthcare Sciences

Faculty of Science and Health

<b>Classification</b>	Level B
<b>Delegation band</b>	<a href="#">Delegations and Authorisations Policy (see Section 3)</a>
<b>Special conditions</b>	Nil
<b>Workplace agreement</b>	<a href="#">Charles Sturt University Enterprise Agreement</a>
<b>Date last reviewed</b>	2 September 2021



# About Charles Sturt University

## Purpose

The Wiradjuri phrase *yindyamarra winhanganha* means the wisdom of respectfully knowing how to live well in a world worth living in. This phrase represents who we are at Charles Sturt University – our ethos. It comes from traditional Indigenous Australian knowledge, but it also speaks to the vision of the university – to develop and spread wisdom to make the world a better place.

## Vision

Charles Sturt University is set to undergo a decade of great reform that will see the university characterised by these key elements:

- An uncompromising drive towards excellence in every aspect of its operations
- A far-reaching strategic re-positioning of teaching, learning, research, and innovation
- A cementing of our position as Australia's pre-eminent rural and regional university

The overarching aim is to consolidate our institution so that it is demonstrably more resilient and sustainable by the end of the decade.

## Goals

To deliver on our purpose and vision, the university has three key goals:

1. Maintain the university's position in the top five Australian universities for graduate outcomes based on employment and salary
2. Embed a culture of excellence across all aspects of the university's operations
3. Exponential growth in research, development, and innovation income in our chosen areas, delivering high impact outcomes for regional Australia

## Our values

Charles Sturt has a proud history and is fortunate to have an outstanding group of diverse, passionate, and engaged people working with us. Our values of insightful, inclusive, impactful, and inspiring guide our behaviours and ways of working to help us achieve our ethos of creating a world worth living in.

## Performance measures

In addition to the principal responsibilities all staff are required to contribute to the success of the university strategy including meeting university's eight key performance indicators:

<b>Our Students</b>	<ul style="list-style-type: none"><li>• Commencing progress rate</li><li>• Student experience</li></ul>
<b>Our Research</b>	<ul style="list-style-type: none"><li>• Research income</li><li>• Research quality and impact</li></ul>
<b>Our People</b>	<ul style="list-style-type: none"><li>• All injury frequency rate</li><li>• Engagement</li></ul>
<b>Our Social Responsibility</b>	<ul style="list-style-type: none"><li>• Underlying operating result</li><li>• Community and partner sentiment</li></ul>



## Faculty of Science and Health

### School of Nursing, Paramedicine and Healthcare Sciences

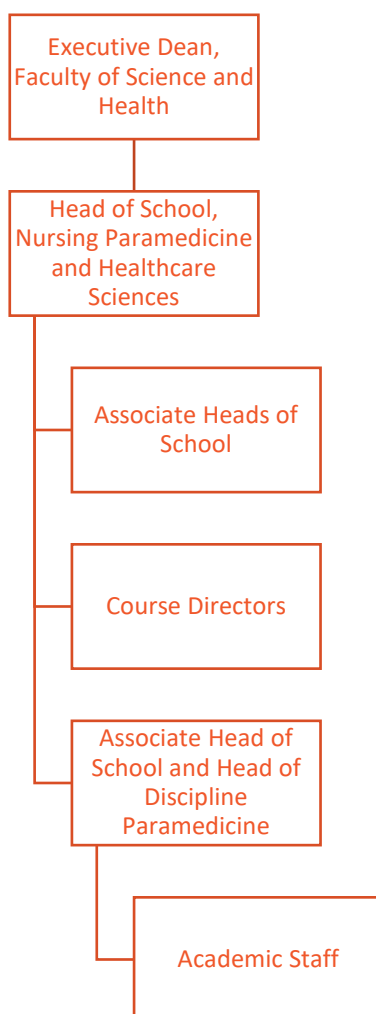
The School of Nursing, Paramedicine and Healthcare Sciences is committed to educating all students to live well and help others to adopt healthy lifestyles in a range of settings. Academic staff are passionate about the transformational nature of education – it is through learning and growth that people achieve their potential.

The courses offered by the School of Nursing, Paramedicine and Healthcare Sciences include undergraduate, postgraduate, and higher degrees by research in nursing, paramedicine, paramedicine and First Nations health.

The strength of these courses lies in the opportunities provided to students to develop personally and also professionally, acquiring the knowledge, attitudes and practical skills needed to work autonomously and also as part of a team, as high-quality health professionals.

While there is a particular need for high-quality health professionals in regional, rural and remote locations, graduates of the School are also in high demand in urban and metropolitan settings, reflecting as they do the resilience and independent thinking for which rural Australians are known.

### Organisational chart





## Reporting relationship

**This position reports to:** Associate Head of School and Head of Discipline- Paramedicine

**This position supervises:** Nil

## Key working relationships

- Head of School
- Course Director
- Associate Head/s of School
- Discipline Leads
- Academic staff

## Position overview

The Lecturer or Scholarly Teaching Fellow in Paramedicine will teach into the paramedicine programs that include the Bachelor of Paramedicine Bachelor of Paramedicine (Honours), Graduate Diploma of Clinical Practice (Paramedicine), Post Graduate Certificate in Paramedicine (with specialisations), Graduate Diploma in Paramedicine (with specialisations) and the Master of Paramedicine (with specialisations).

Appointees may also be required to supervise honours students, teach in other postgraduate programs in areas where they hold suitable academic qualifications. The successful candidate will also have an opportunity to develop and progress an active research profile aligned to the strategic direction of the School.

## Principal responsibilities

- Apply Charles Sturt University learning and teaching methodologies, processes, technologies and tools to deliver high quality student centred learning opportunities in the relevant discipline and as required to meet the teaching needs of the University. Achieve excellence in teaching in a range of delivery modes, which may include face to face and online teaching and assessment.
- Supervise Honours students.
- Build strong professional relationships with students and provide timely and appropriate consultation and feedback.
- Actively contribute to collaborative processes to design, deliver and continually improve high quality courses and learning experiences for students including the giving and receiving of constructive feedback.
- Actively contribute to high performing multi disciplinary teams with an outcome focus and the development of a respectful, trusting and collaborative working environment.
- Provide leadership and management, as appropriate, in the convening, coordination and delivery of subjects and/or courses. This may include coordinating and/or leading other staff including casual academic staff.
- Proactively develop and foster relationships with a range of stakeholders including community, government departments, and professional bodies.
- Maintain a sound and current knowledge and understanding of the relevant discipline through industry engagement and/or scholarly activities or similar.



- Conduct ethical, high quality research and contribute to knowledge through scholarship, publication and presentation and execute a research plan that aligns with CSU's Research Plan and objectives including pursuing funding opportunities.
- Identify and create opportunities for collaborative research projects with internal and external researchers and stakeholders.
- Continue to build a record of research/creative work which contributes to the development of the discipline whilst maintaining up-to-date research records within CSU's research database.
- Provide leadership and foster partnerships with the professions that bring direct benefit to the strategic work of the University, in terms of teaching, workplace learning, course profile and/or areas of research strength.
- Contribute to the development and improvement of policy and practice through involvement in professional/industry associations, accreditation authorities, conference organisations, advisory bodies, and national or international delegations, consistent with the University's Outside Professional Activities Policy.
- Develop, lead and/or evaluate continuing professional education and maintain professional accreditation.
- Participate in external professional reviews.
- Engage in professional practice in a discipline or field for the purposes of improving/transforming professional practice and feeding back into teaching and/or practice across the professions OR which demonstrates the maintenance or development of significant advanced practice skills or improves/transforms practices within the profession and which informs teaching. These activities could be achieved through scholarship, publication or presentation.
- Engage in professional activities linked to knowledge development and problem solving such as research with, for and about the profession and about professional practice; projects related to critical evaluation and enhancement of practice; collaborations with research colleagues and professions/industries/businesses; authorship/editorship.
- Undertake larger projects that enhance curricula and that are of particular benefit to the School or discipline, or projects that investigate practice and university teaching/curricula.
- Actively contribute to the governance, marketing and promotion, and administrative activities to facilitate the work of the Faculty/School.
- Other duties appropriate to the classification required.



## Role-specific capabilities

<b>Focus on service</b>	Strive to meet needs and exceed expectations of our students, communities and colleagues (performance focus, quality outcomes, student welfare, equity and conduct).
<b>Live our values</b>	Uphold the Charles Sturt University values daily in our own behaviours and interactions with others.
<b>Network</b>	Bring people together and build relationships that deliver desired benefits and outcomes.
<b>Lead and supervise</b>	Set directions and standards, delegate, motivate, empower, develop others, recruit talent.
<b>Learn and research</b>	Learn rapidly, gather information, understand rapidly, manage knowledge, foster organisational learning
<b>Plan and organise</b>	Set objectives, plan, establish contingencies, manage time, resources and people, monitor progress.

## Physical capabilities

The incumbent may be required to perform the following.

- Work in other environments beyond your base campus, such as other campuses.
- On occasion drive a university vehicle distances up to 500km per day within the terms of the university's [Driver Safety Guidelines](#)
- Perform in an accurate and timely manner push/pull, reaching, grasping, fine manipulation tasks, including lifting items up to 10kg.



## Selection criteria

Applicants are expected to address the selection criteria when applying for this position.

### Essential

- A. A masters level or higher post graduate qualification appropriate to paramedicine and current registration as a Paramedic with the Paramedicine Board of Australia.
- B. A record of research/creative works or professional activity relevant to the discipline, which demonstrate a capacity to make an autonomous contribution.
- C. Evidence of the delivery of high-quality student-centred learning and teaching.
- D. Sound knowledge and understanding of the discipline gained through industry experience and/or scholarly activities or similar.
- E. Demonstrated commitment to applying culturally safe practices in the workplace.
- F. Demonstrated capacity to work both collaboratively and independently in a large complex academic setting with an outcome focus.

### Desirable

- G. Qualifications in education, or equivalent standing.



