

**ROLE DESCRIPTION**

<b>Role Title:</b>	Senior Aboriginal Health Practitioner
<b>Classification Code:</b>	OPS5
<b>LHN/ HN/ SAAS/ DHA:</b>	Women's and Children's Health Network
<b>Hospital/ Service/ Cluster</b>	Women's and Children's Health Network
<b>Division:</b>	Health and Recovery, Trauma Safety Services (HaRTSS)
<b>Department/Section / Unit/ Ward:</b>	Metropolitan Youth Health (MYH)
<b>Role reports to:</b>	Team Leader
<b>Role Created/ Reviewed Date:</b>	
<b>Criminal History Clearance Requirements:</b>	Working with Children Check (issued by DHS) National Police Check (issued by approved provider) If applicable - NDIS Worker Check (issued by NDIS Commission)
<b>Immunisation Risk Category</b>	<input type="checkbox"/> Category A (direct contact with blood or body substances) <input checked="" type="checkbox"/> Category B (indirect contact with blood or body substances)

**ROLE CONTEXT****Primary Objective(s) of role:**

- > Plan, develop and manage the delivery of high level specialised clinical health care to Aboriginal young people and their families, within a youth health and multi-disciplinary context.
- > Provide high level care within a multidisciplinary team environment.
- > Support and guide team members on culturally appropriate interventions.
- > Create and develop partnerships and contribute to collaborative initiatives with community groups, health professionals and organisations.

**Direct Reports:**

- > Nil

**Key Relationships/ Interactions:**Internal

- > Responsible to the Manager MYH through an assigned site MYH Team Leader.
- > Reports/liases with the Program Manager, Aboriginal for the development of proposals and initiatives.
- > Contribute to leadership and supervision to OPS4 Aboriginal Clinical Health Worker's and Aboriginal Health Practitioners and any trainee staff.
- > Member of a multi-disciplinary team and works closely with other professionals in MYH, the YWSWD and across the WCHN Region.

External

- > Works collaboratively with external agencies providing services to Aboriginal young people.
- > Involves Aboriginal young people, their families and communities in service planning, implementation and evaluation.

### Challenges associated with Role:

Major challenges associated with the role include:

- > Ensure youth primary health care services are delivered to best practice standard, and improve health outcomes for Aboriginal young people with high and complex needs.
- > Ensure the viability of youth primary health care services within a changing environment and improve integration across the continuum of care through participating in strengthening innovation and service coordination.
- > Improve health service access for young people who are Aboriginal, under the Guardianship of the Minister, in the Youth Justice Training Centre, and other priority population groups of young people who experience vulnerabilities.

### Delegations:

- > Nil

### Resilience:

SA Health employees persevere to achieve goals, stay calm under pressure and are open to feedback.

### Performance Development

The incumbent will be required to participate in the organisation's Performance Review & Development Program which will include a regular review of the incumbent's performance against the responsibilities and key result areas associated with their position and a requirement to demonstrate appropriate behaviours which reflect a commitment to SA Health values and strategic directions.

### General Requirements:

Managers and staff are required to work in accordance with the Code of Ethics for South Australian Public Sector, Directives, Determinations and Guidelines, and legislative requirements including but not limited to:

- > *Work Health and Safety Act 2012* (SA) and when relevant WHS Defined Officers must meet due diligence requirements.
- > *Return to Work Act 2014* (SA), facilitating the recovery, maintenance or early return to work of employees with work related injury / illness.
- > Meet immunisation requirements as outlined by the *Immunisation for Health Care Workers in South Australia Policy Directive*.
- > Equal Employment Opportunities (including prevention of bullying, harassment and intimidation).
- > *Children and Young People (Safety) Act 2017* (SA) 'Notification of Abuse or Neglect'.
- > Disability Discrimination.
- > *Independent Commissioner Against Corruption Act 2012* (SA).
- > *Information Privacy Principles Instruction*.
- > Relevant Awards, Enterprise Agreements, *Public Sector Act 2009*, *Health Care Act 2008* and the *SA Health (Health Care Act) Human Resources Manual*.
- > Relevant Australian Standards.
- > Duty to maintain confidentiality.
- > Smoke Free Workplace.
- > To value and respect the needs and contributions of SA Health Aboriginal staff and clients, and commit to the development of Aboriginal cultural competence across all SA Health practice and service delivery.
- > May be responsible for supervision and oversight of volunteers assigned within the department, in collaboration with the WCHN Volunteer Unit. Refer to Volunteer Engagement and Management Procedure
- > Applying the principles of the *South Australian Government's Risk Management Policy* to work as appropriate.

The SA Health workforce contributes to the safety and quality of patient care by adhering to the South Australian Charter of Health Care Rights, understanding the intent of the National Safety and Quality Health Service Standards and participating in quality improvement activities as necessary.

#### Handling of Official Information:

By virtue of their duties, SA Health employees frequently access, otherwise deal with, and/or are aware of, information that needs to be treated as confidential.

SA Health employees will not access or attempt to access official information, including confidential patient information other than in connection with the performance by them of their duties and/or as authorised.

SA Health employees will not misuse information gained in their official capacity.

SA Health employees will maintain the integrity and security of official or confidential information for which they are responsible. Employees will also ensure that the privacy of individuals is maintained and will only release or disclose information in accordance with relevant legislation, industrial instruments, policy, or lawful and reasonable direction.

#### Special Conditions:

- > ***This position is exempted from the provisions of Sections 30(1), 52(1) and 103 of the Equal Opportunity Act 1984 pursuant to an order of the Equal Opportunity Tribunal, therefore only Aboriginal or Torres Strait Islander people with expertise, cultural knowledge and life experience are to be appointed to this position.***
- > It is mandatory that no person, whether or not already working in SA Health, may be appointed to a position in SA Health unless they have provided a satisfactory current Criminal and Relevant History Screening, as required by the SA Health Criminal and Relevant History Screening Policy Directive.
- > For appointment in a Prescribed Position under the *Child Safety (Prohibited Persons) Act (2016)*, a current Working with Children Check (WWCC) is required from the Department for Human Services Screening Unit, and must be renewed every 5 years from the date of issue
- > For 'Risk Assessed Roles' under the *NDIS Worker Screening Rules 2018*, the individual's NDIS Worker Check must be renewed every 5 years from the date of issue (or are required to be compliant with transitional arrangement for South Australia).
- > Failure to renew required criminal history screenings prior to nominated expiry will require your absence by way of approved leave until a renewal is obtained.
- > A satisfactory National Police Certificate (NPC) assessment is required.
- > Appointment is subject to **immunisation risk category requirements** (see page 1). There may be ongoing immunisation requirements that must be met.
- > As a state-wide service, WCHN employees may be required to undertake work at various locations in metropolitan Adelaide, and provide outreach to other parts of South Australia (the latter in consultation with the incumbent of the role).
- > Depending on work requirements the incumbent may be transferred to other locations across SA Health to perform work appropriate to classification, skills and capabilities either on a permanent or temporary basis subject to relevant provisions of the Public Sector Act 2009 for Public Sector employees or the SA Health (Health Care Act) Human Resources Manual for Health Care Act employees.
- > The incumbent may be required to participate in Counter Disaster activities including attendance, as required, at training programs and exercises to develop the necessary skills required to participate in responses in the event of a disaster and/or major incident.
- > This Role Description provides an indication of the type of duties you will be engaged to perform. You may be lawfully directed to perform any duties that a person with your skills and abilities would reasonably be expected to perform.
- > The position will be required work across all MYH sites to be responsive to client and organisational needs and to ensure service responsiveness.
- > Must possess a current driver's licence and be willing to drive.
- > Some out of hours work will be required, including weekends.

- > Intra and interstate travel may be required.
- > If applicable, successfully completing the Cert IV in Aboriginal Primary Health Care, Practice or equivalent which is recognised by the Aboriginal Health Council of SA within 2 years of commencement in the role.

Exemption:

WCHN has determined that an exemption to prefer Aboriginal applicants granted by the Equal Opportunity Tribunal of South Australia applies to this position.

**Zero Tolerance to Racism:**

The Women's and Children's Health Network has zero tolerance to racism. The Network is committed to ensuring its staff, volunteers, consumers and visitors are able to work or access health services in an environment that is culturally safe and free from any form of racism or discrimination.

Our staff are supported to address any form of racism in all environments, in line with our Corporate Procedure: ***Zero Tolerance to Racism – Identifying, Responding, and Managing in the Workplace.***

**White Ribbon:**

SA Health has a position of zero tolerance towards men's violence against women in the workplace and the broader community. In accordance with this, the incumbent must always act in a manner that is non-threatening, courteous, and respectful and will comply with any instructions, policies, procedures or guidelines issued by SA Health regarding acceptable workplace behaviour.

## Key Result Area and Responsibilities

Key Result Areas	Major Responsibilities
<b>Health care and case management services are planned and delivered to Metropolitan Youth Health sites and via outreach.</b>	<ul style="list-style-type: none"> <li>&gt; Deliver and document multidisciplinary health care services including intake, assessment and referral; physical and psychosocial health practices.</li> <li>&gt; Deliver and document high level case management services which result in young people are engaging in their health care management.</li> <li>&gt; Apply high level knowledge of the relevant service sectors and referral pathways and processes to ensure young people understand service options available and are referred appropriately in response to their needs.</li> <li>&gt; Undertake data collection, evaluation and reporting for the purpose of ensuring continuous improvement of clinical services, align to the Model of Care.</li> </ul>
<b>Youth Primary Health Care programs/projects are managed at MYH sites and via outreach.</b>	<ul style="list-style-type: none"> <li>&gt; Identify, plan, deliver and document complex projects for Aboriginal young people for the purpose of providing activities that build young people's capacity to manage their health care.</li> <li>&gt; Co-ordinate specific resources relating to Aboriginal youth health interventions.</li> <li>&gt; Undertake data collection, evaluation and reporting for the purpose of continuous improvement including that complex projects reflect contemporary practice and are responsive to identified need.</li> <li>&gt; Participate in seeking out funding opportunities for the enhancement of the Aboriginal young people's programs.</li> </ul>
<b>Operational Services staff are provided with required professional/individual development education and personal development is achieved</b>	<ul style="list-style-type: none"> <li>&gt; Ensure professional and individual development is provided to Operational Services staff within organisational guidelines, where appropriate.</li> <li>&gt; Attainment of personal individual professional competencies to a standard agreed at annual performance development review and as designated by the service.</li> </ul>
<b>Young people and their families and communities are involved in service provision</b>	<ul style="list-style-type: none"> <li>&gt; Work collaboratively with clients in the development of individual case management care/treatment plans using a client centred framework.</li> <li>&gt; Engage young people, their families and communities to ensure service delivery is relevant to their needs and manage the implementation of new initiatives.</li> </ul>
<b>Individual development and education requirements are met.</b>	<ul style="list-style-type: none"> <li>&gt; Maintain a commitment to increasing individual professional development and continue to acquire complex practice expertise.</li> <li>&gt; Attain professional competencies to a standard agreed with management and as designated by the service.</li> </ul>
<b>Quality management, professional standards and risk management activities and ongoing improvement of services are maintained.</b>	<ul style="list-style-type: none"> <li>&gt; Contribute to the review of existing processes/practices and promote acceptance of change to improve service delivery and outcomes.</li> <li>&gt; Contribute to the development and implementation of practice guidelines, protocols/audits, quality indicators and service planning as part of quality improvement processes.</li> <li>&gt; Ensure all service practices, for which you have responsibility, are assessed for risk and a management strategy is in place.</li> <li>&gt;</li> </ul>
<b>A positive and safe work culture are encouraged and fostered within</b>	<ul style="list-style-type: none"> <li>&gt; Participate in and be accountable to the team practices which promote a positive culture, which is based on SA Health's values and promotes customer service, learning and development, safety and welfare of</li> </ul>

<b>Metropolitan Youth Health.</b>	<p>team members, acknowledges differences and encourages creativity and innovation.</p> <ul style="list-style-type: none"> <li>&gt; Actively deal with conflict and inappropriate behaviour expediently and effectively to support the maintenance of a positive team environment.</li> </ul>
<b>Culturally sensitive services are delivered.</b>	<ul style="list-style-type: none"> <li>&gt; Ensure and promote access and equity of services for all clients/stakeholders.</li> <li>&gt; Provide MYH staff with cultural advice, consultancy and mentoring to facilitate the engagement of Aboriginal young people in the management of their health care and to support the management of complex issues and concerns.</li> <li>&gt; Model behaviours and attitudes that are culturally sensitive in all interactions with staff/clients/stakeholders.</li> </ul>

## Knowledge, Skills and Experience

### **ESSENTIAL MINIMUM REQUIREMENTS**

#### **Educational/Vocational Qualifications**

- > Cert IV in Aboriginal Primary Health Care, Practice or equivalent.
- > Registration with the Aboriginal and Torres Strait Islander Health Practice Board of Australia.

#### **Personal Abilities/Aptitudes/Skills:**

- > Known, respected, and connected within Aboriginal communities and demonstrated ability to work in a culturally sensitive and accountable manner with Aboriginal and Torres Strait Islander individuals, families and communities and non-Aboriginal individuals whilst maintaining a high degree of confidentiality.
- > Use a high level of initiative and creativity to work effectively, either as a member of a team or as a project leader, including activities that identify, analyse and resolve complex problems and conflict.
- > Conduct research, including accurately documenting work undertaken, and delivering clear and effective written reports.

#### **Experience**

##### ***Proven experience in:***

- > Working effectively with a range of Aboriginal and Torres Strait Islander young people and their families, who have diverse values systems, cultural differences and challenging and complex needs.
- > Clinical health assessment, treatment, referral, psychosocial support and advocacy for young people with a range of complex health issues.
- > Planning, developing, implementing and delivering a range of projects and group work relating to complexities in areas including health education, community development, group work and peer education.
- > Leading and guiding consultations and working collaboratively and in partnership, as part of a multi-disciplinary team incorporating Aboriginal and/or Torres Strait Islander and other communities, service providers and relevant stakeholders.
- > Autonomously developing, coordinating and delivering training workshops on cultural protocols, involving a high level of creativity that supports staff to provide quality culturally sensitive services.

#### **Knowledge**

##### ***Well-developed knowledge and understanding of:***

- > Aboriginal and/or Torres Strait Islander cultures including family and community obligations.
- > Historical and contemporary issues that affect the health and wellbeing of Aboriginal and/or Torres Strait Islander young people, including barriers for Aboriginal and/or Torres Strait Islander young people in accessing services and programs.
- > Clinical health care service provision needs of Aboriginal and Torres Strait Islander young people

##### ***Knowledge of the obligations relating to:***

- > Young People under the Guardianship of the Minister
- > Mandatory Notifications
- > Consumer rights and responsibilities

## **DESIRABLE CHARACTERISTICS**

### **Educational/Vocational Qualifications**

### **Experience**

- > Working with Aboriginal and Torres Strait Islander young people in the community services sector in service/project planning, implementation and/or evaluation

### **Knowledge**

- > Knowledge of the South Australian Public Health System and administrative policies and practices of Community Health.



## Organisational Context

### Organisational Overview:

Our mission at SA Health is to lead and deliver a comprehensive and sustainable health system that aims to ensure healthier, longer and better lives for all South Australians. We will achieve our objectives by strengthening primary health care, enhancing hospital care, reforming mental health care and improving the health of Aboriginal people.

SA Health is committed to a health system that produces positive health outcomes by focusing on health promotion, illness prevention and early intervention. We will work with other government agencies and the community to address the environmental, socioeconomic, biological and behavioural determinants of health, and to achieve equitable health outcomes for all South Australians

### Our Legal Entities:

SA Health is the brand name for the health portfolio of services and agencies responsible to the Minister for Health and Wellbeing.

The legal entities include but are not limited to Department for Health and Wellbeing, Central Adelaide Local Health Network, Northern Adelaide Local Health Network, Southern Adelaide Local Health Network, Women's and Children's Health Network, Country Health SA Local Health Network and SA Ambulance Service.

### SA Health Challenges:

The health system is facing the challenges of an ageing population, increased incidence of chronic disease, workforce shortages, and ageing infrastructure. The SA Health Care Plan has been developed to meet these challenges and ensure South Australian's have access to the best available health care in hospitals, health care centres and through GPs and other providers.

### Health Network/ Division/ Department:

The Women's and Children's Health Network (WCHN) was established to promote, maintain and restore the health of women, children and young people in South Australia. The Service plans, develops and coordinates health services as part of an integrated health system.

The Women's and Children's Health Network efficiently conducts and manages, within its identified resources, health services for children, young people and women, including:

- Specialist hospital services.
- Primary health care and population health programs.
- Integrated community care services.
- Services to address the health and wellbeing of particular populations, including Aboriginal Health Programs.
- Education and training programs.
- Research.

## Values

### SA Health Values

The values of SA Health are used to indicate the type of conduct required by our employees and the conduct that our customers can expect from our health service:

- > We are committed to the values of integrity, respect and accountability.
- > We value care, excellence, innovation, creativity, leadership and equity in health care provision and health outcomes.
- > We demonstrate our values in our interactions with others in SA Health, the community, and those for whom we care.

### Domestic and Family Violence

The WCHN recognises violence against women as a human rights issue that must be addressed in the workplace, and is committed to a zero tolerance policy towards violence against women in the workplace. Accordingly employees must appropriately report and respond to any such acts in the workplace, and make available appropriate support to employees who may be experiencing violence in the community.

### Code of Ethics

The *Code of Ethics for the South Australian Public Sector* provides an ethical framework for the public sector and applies to all public service employees:

- > Democratic Values - Helping the government, under the law to serve the people of South Australia.
- > Service, Respect and Courtesy - Serving the people of South Australia.
- > Honesty and Integrity- Acting at all times in such a way as to uphold the public trust.
- > Accountability- Holding ourselves accountable for everything we do.
- > Professional Conduct Standards- Exhibiting the highest standards of professional conduct.

The Code recognises that some public sector employees are also bound by codes of conduct relevant to their profession.

## Approvals

### Role Description Approval

I acknowledge that the role I currently occupy has the delegated authority to authorise this document.

**Name:**

**Role Title:**

**Signature:**

**Date:**

### Role Acceptance

#### Incumbent Acceptance

I have read and understand the responsibilities associated with role, the role and organisational context and the values of SA Health as described within this document.

**Name:**

**Signature:**

**Date:**

## Women's & Children's Health Network

### Accountability – what does it mean for me?

Within WCHN everyone is accountable for their contribution to the safety and quality of care delivered to consumers.

#### Consumers

Consumers and their families participate as partners to the extent that they choose. These partnerships can be in their own care, and in organisational design and governance.

#### Staff including Contractors, Locums, Agency, Students and Volunteers

All staff (as described above) have a role in the delivery of safe, high quality care to consumers, and are expected to perform their roles with diligence; and with a person-centred approach to the best of their ability. It is the responsibility of all staff to raise concerns when it is recognised that something is not right. Safety and quality is the responsibility of all staff, at all levels and across all locations.

#### Clinicians

All clinicians are accountable for the provision of competent, consistent, timely, safe, reliable, contemporary and person centred care within a defined scope of practice.

Clinicians work in teams with professionals from a variety of disciplines based on mutual respect and clear communication, with an understanding of responsibilities, capabilities, constraints and each other's scope of practice.

All clinicians are responsible for providing care that is person centred, evidence based and which focuses on safety through minimising risk while achieving optimal outcomes for consumers. This is helped by participating in clinical governance, in WCHN health and safety forums, fostering a learning environment and supporting other clinicians to provide high quality services which are safe.

Clinicians are expected to speak up when there are concerns about safety so that these can be rectified and learnt from. Clinicians are accountable for their own individual professional practice, including maintaining currency of credentialing, registration and professional practice.

#### Managers

Managers are accountable for implementing systems and practices that support high quality clinical practice. Managers oversee, guide and direct staff by providing leadership and advice ensuring appropriate clinical governance, continuous quality improvement, and leading safety programs. Managers develop, implement and monitor performance indicators for the identification, management and reporting of risk. Managers implement the Clinical Governance Framework; Consumer Engagement Framework and the requirements of the National Safety & Quality Standards within their areas of responsibility. Managers are expected to demonstrate diligence and honesty in the management of public resources.

Managers organise, direct and manage the performance of staff to meet operational requirements; implement and promote evidence based standards and policies that are compliant with relevant, professional, industrial and legislative requirements. Managers engage with and listen to staff, and create an environment where staff feel able to speak up in relation to concerns about safety. Managers address concerns raised and provide regular, ongoing feedback in the interests of improving care and safety.

#### Executive/Divisional Directors

Executive/Divisional Directors are accountable for embedding the Clinical Governance Framework; Consumer Engagement Framework and the requirements of the National Safety & Quality Standards into their areas of responsibility and providing assurance to the Executive and Board that these systems are in place and work effectively, all risks are known and mitigated and that staff understand their safety and quality responsibilities.

It is expected that those holding senior leadership positions will model the highest standards of ethical and professional behaviour.

#### WCHN Committees

WCHN Committees support Executive Directors to implement and evaluate organisational systems, support divisions to work together to identify and mitigate risk and continuously improve practice. They support the organisation to work as a single entity.

#### Chief Executive Officer

The Chief Executive has overall accountability for safety, care delivery, system governance and monitoring.

#### Board

The Board is accountable for governance, monitoring, compliance and ensuring the executive are discharging their responsibilities in managing the organisation.

# Women's and Children's Health Network Strategy 2026

## Four Strategic Priorities



Improved health and wellbeing of families and communities



Meaningful gains in Aboriginal health and wellbeing



Provide leading healthcare for women, babies, children and young people



Create one health network

## Key Enablers

Effective communication

Consumer and community engagement

Culture and leadership

Engaged and capable workforce

Enabling technology

Research

Productive partnerships

Contemporary infrastructure

Financial sustainability

Continuous improvement and innovation

**Mission** To improve the health and wellbeing of families and communities by providing integrated care and support

**Vision** To be a leading and respected health network for women, babies, children, young people and their families

**Values** Compassion, Respect, Equity, Accountability, Together for Excellence

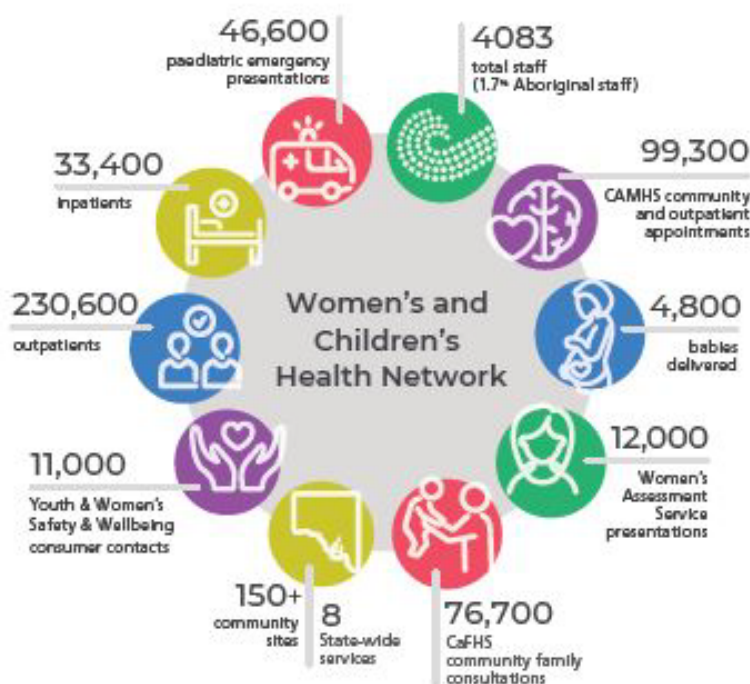
**Our Story** starts with our consumers and communities who are at the centre of everything that we do.

Our focus for the years ahead is to:

- Provide outstanding care and service
- Enhance our culture and leadership
- Design and deliver a new Women's and Children's Hospital
- Strengthen partnerships, expand innovation
- Through research, education and learning, inspire others, share specialist knowledge and deliver excellence in everything that we do
- Deliver an integrated WCHN

**Our Way** is underpinned by our agreed ways of working together that enable us as an organisation to:

- Share a common purpose and direction
- Use innovative and new ways to deliver our service
- Educate and support people to excel in the care that they give
- Grow and develop our current and future leaders
- Ensure that we have consistent behaviours and ways of working
- Implement processes and systems that are efficient and effective



State-wide services: Child and Family Health Service, Child and Adolescent Mental Health Service, Yarrow Place Rape and Sexual Assault Service, Disability Services, Child Protection Service, Metropolitan Youth Health, Women's Health Service, Women's Safety Strategy