



Charles Sturt
University

Position Description



Lecturer in Social Work

School of Humanities and Social Sciences

Faculty of Arts and Education

| | |
|----------------------|---|
| Classification | Level B |
| Delegation Band | Delegations and Authorisations Policy (see Section 3) |
| Nature of Employment | Continuing |
| Workplace Agreement | Charles Sturt University Enterprise Agreement |
| Date Last Reviewed | March 2021 |

Faculty of Arts and Education

The School of Humanities and Social Sciences

The Faculty of Arts and Education is one of three Faculties within the University. Eight Schools and Centres offer a diversity of courses in education, communication, creative industries, social work and human services, library and information studies, theology, humanities, Indigenous Australian studies and Islamic studies.

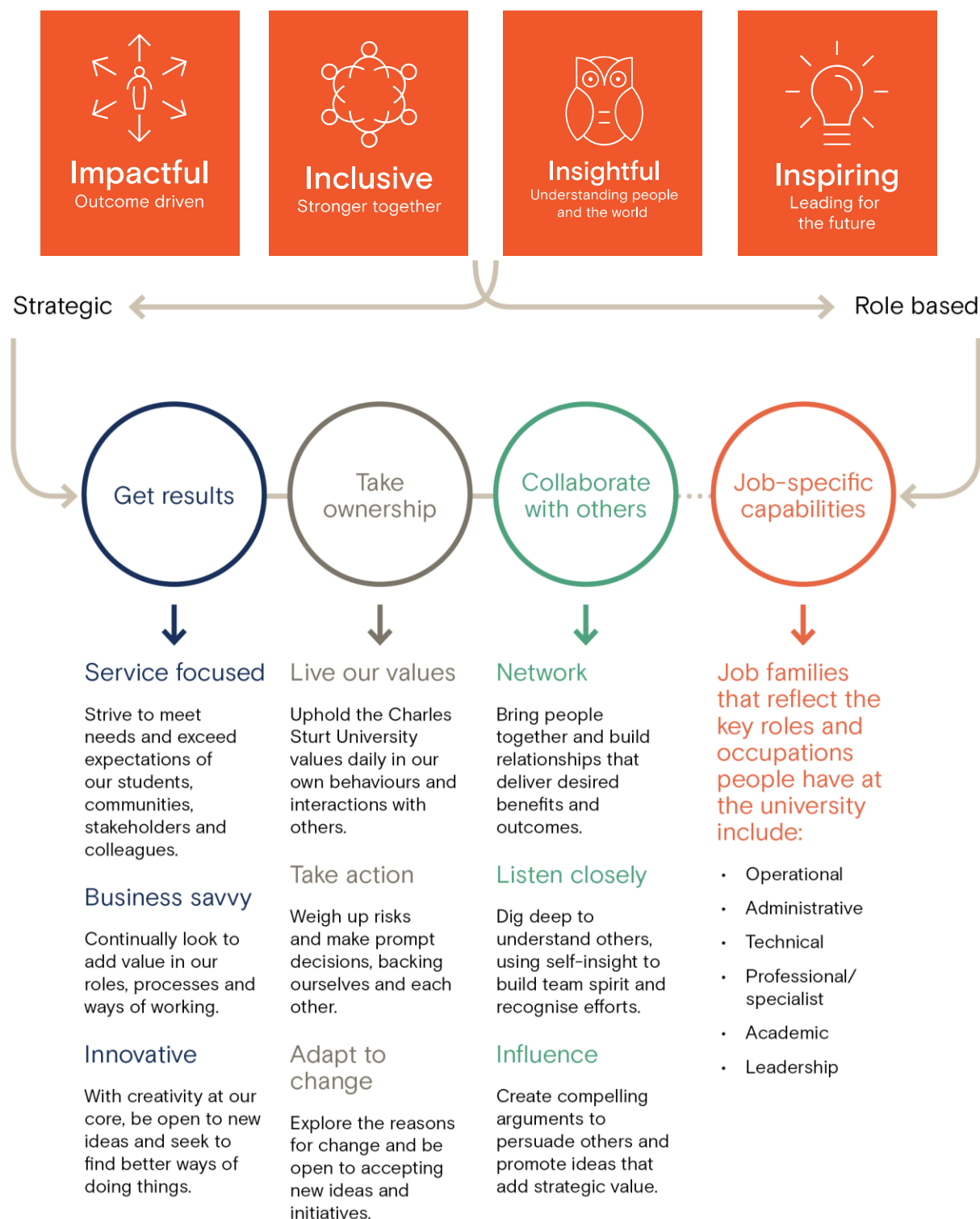
With approximately 9,000 online students and 3,000 on campus students, the Faculty is an innovator in online and blended learning modes. Over 200 academic staff deliver distinctive courses, and are supported by a skilled team of professional staff. On campus courses are delivered at the University's Wagga Wagga, AlburyWodonga, Bathurst, Dubbo, and Port Macquarie campuses, and at other locations including Sydney and Canberra.

Academic staff within the Faculty undertake high quality, impactful research that engages with governments and professional organisations, nationally, internationally and in regional communities, ensuring excellent supervision for Higher Degree Research students.

The School of Humanities and Social Sciences promotes critical thinking and positive community change in the study areas of Social Work and Human Services, Social Sciences as well as Humanities. The School supports community engagement activities including projects in regional health, disability services, community development and gerontology.

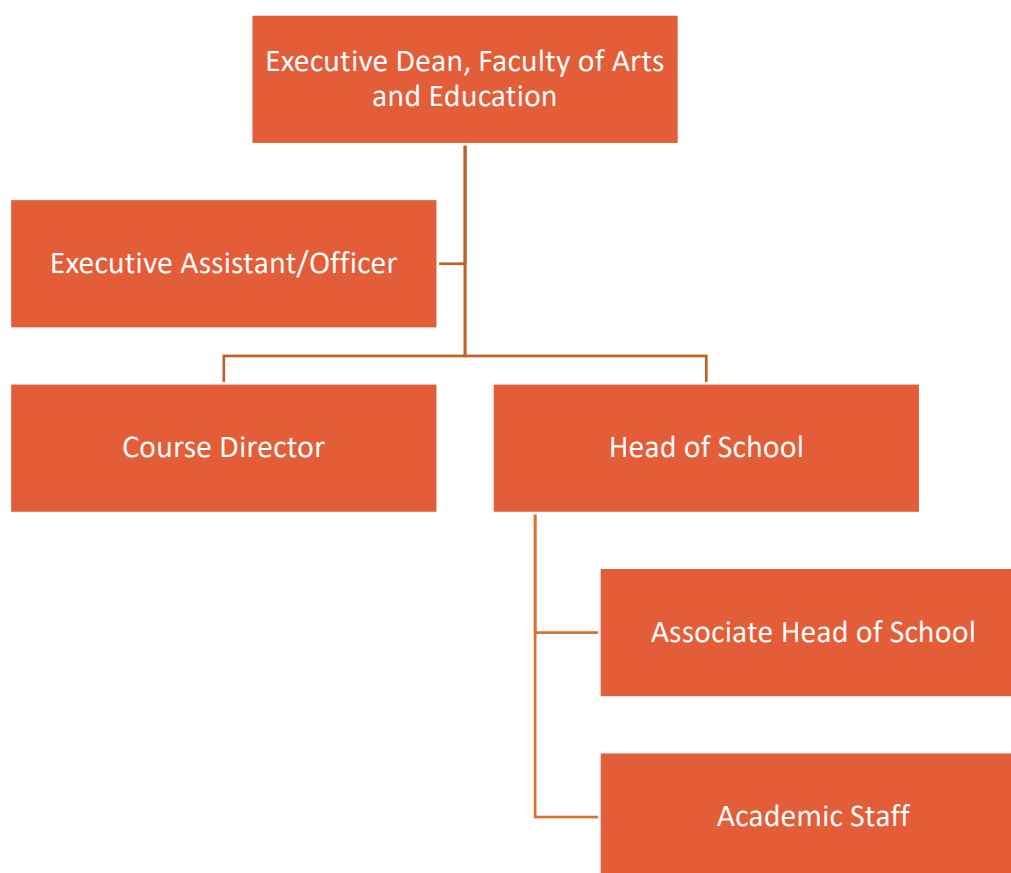


Our University Values





Organisational Chart



Reporting relationship

This position reports to: Head, School of Humanities and Social Sciences

This position supervises: Nil



Position overview

The successful candidate will join a team engaged in teaching in a range of degree programs that prepare students for careers in social work and human services in areas such as mental health, ageing, child and family practice and Australian Indigenous welfare. This variety means that the appointees have the opportunity to teach accredited subjects to social work students as well as related subjects to students in degrees within the human services and to both on-campus and online students at undergraduate and postgraduate levels.

The appointees are also expected to demonstrate excellence in both student engagement, community and industry relations, and research as appropriate to the position. The Lecturer in Social Work will provide academic leadership in the Faculty of Arts and Education to ensure excellence in teaching and learning and research at both undergraduate and postgraduate levels. It is expected that appointees will advance the standing of the Faculty by providing a contribution to academic administration, curriculum development, program coordination and working collaboratively across the Faculty and with external partners where appropriate.

Principal responsibilities

- Apply CSU learning and teaching methodologies, processes, technologies and tools to deliver high quality student centred learning opportunities in the relevant discipline and as required to meet the teaching needs of the University. Achieve excellence in teaching in a range of delivery modes, which may include face to face and online teaching and assessment.
- Teach social work and human service subjects across a range of specialisations such as working with individuals, couples and families, group work and community development, child, youth and family practice, domestic violence, social work with Aboriginal and Torres Strait Islanders, migration and population displacement, mental health, disability, healthy ageing, workplace learning (field education), social advocacy and government policy.
- Supervise Research Higher Degree students.
- Build strong professional relationships with students and provide timely and appropriate consultation and feedback.
- Actively contribute to collaborative processes to design, deliver and continually improve high quality courses and learning experiences for students including the giving and receiving of constructive feedback.
- Actively contribute to high performing multi disciplinary teams with an outcome focus and the development of a respectful, trusting and collaborative working environment.
- Provide leadership and management, as appropriate, in the convening, coordination and delivery of subjects and/or courses. This may include coordinating and/or leading other staff including casual academic staff.
- Proactively develop and foster relationships with a range of stakeholders including community, government departments, and professional bodies.
- Maintain a sound and current knowledge and understanding of the relevant discipline through industry engagement and/or scholarly activities or similar.



- Conduct ethical, high quality research and contribute to knowledge through scholarship, publication and presentation and execute a research plan that aligns with CSU's Research Plan and objectives including pursuing funding opportunities.
- Identify and create opportunities for collaborative research projects with internal and external researchers and stakeholders.
- Continue to build a record of research/creative work which contributes to the development of the discipline whilst maintaining up-to-date research records within CSU's research database.
- Provide leadership and foster partnerships with the professions that bring direct benefit to the strategic work of the University, in terms of teaching, workplace learning, course profile and/or areas of research strength.
- Actively contribute to the governance, marketing and promotion, and administrative activities to facilitate the work of the Faculty/School.
- Other duties appropriate to the classification as required

Capabilities

- Demonstrated ability to be adaptive and accepting of new ideas, and a willingness to approach new challenges and adjust plans to meet new priorities.
- The ability to work harmoniously and constructively with other members of the university.
- Ability to coordinate, lead and motivate others in the achievement of project goals or professional activities as appropriate to the discipline.
- Ability to carry out duties according to the university's values and Code of Conduct.
- Possess the enthusiasm and energy to set and meet challenging objectives, and to organise resources in order to achieve outcomes in a timely manner.

Physical capabilities

The incumbent may be required to perform the following.

- Work in other environments beyond the school, such as other campuses, as well as possible car and air travel and work with a diverse range of staff, students and community members.
- On occasion drive a university vehicle distances up to 500km per day within the terms of the university's [Driving Hours Guidelines and Policy](#).
- Perform sustained reading, writing and computer related activities including keyboard and mouse operation.



Selection criteria

Applicants are expected to address the selection criteria when applying for this position.

Essential

- A. A doctoral or masters qualification appropriate to the relevant discipline or equivalent accreditation and standing and eligibility for membership of the Australian Association of Social Workers (AASW).
- B. A record of research/creative works or professional activity relevant to the discipline, which demonstrate a capacity to make an autonomous contribution.
- C. Evidence of the delivery of high-quality student-centred learning and teaching.
- D. Sound knowledge and understanding of the discipline gained through industry experience and/or scholarly activities or similar.
- E. Demonstrated capacity to utilise and embrace current and emerging technologies to achieve work objectives.

