



JOB DISCRIPTION FORM

Page 1 of 4

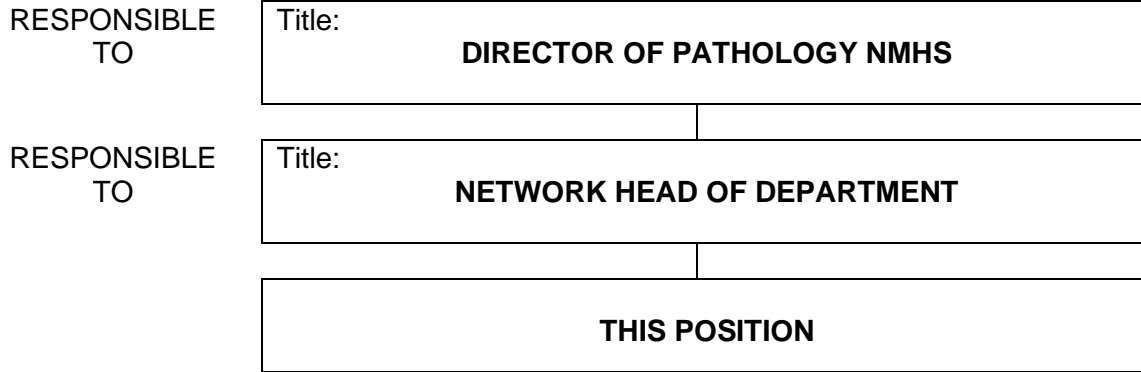
<CLEARANCE REG NO. PWWF<4145> - <JD> - <DATE 7 JUNE 2024>

SECTION 1 - POSITION IDENTIFICATION

NETWORK	QEII
DEPARTMENT	Biochemistry
SECTION	Biochemistry

POSITION TITLE	Registrar – Trainee – Clinical Chemistry
CLASSIFICATION	Year 1-7
POSITION NO.	004211
AWARD	Medical Practitioners Agreement

SECTION 2 - POSITION RELATIONSHIPS



Positions under direct Supervision:

<u>Position No.</u>	<u>Title</u>	<u>Classification</u>	<u>FTE</u>

SECTION 3 - KEY RESPONSIBILITIES

To be an integral part of a team committed to providing the best possible diagnostic and interpretative pathology services to our clients and patients. Provide and promote high quality and patient centred care to all patients under the supervision of Clinical Supervisors within a multi-disciplinary team. Works within ability and according to PathWest's mission & core values.

JOB DESCRIPTION FORM

PAGE 2 OF 4

REGISTRAR – TRAINEE – CLINICAL BIOCHEMISTRY YEAR 1-7, POSITION NO. 004211

SECTION 4 – BRIEF STATEMENT OF DUTIES

Duty No.	Details
1.	<p>Duties</p> <p>1.1 Provides a diagnostic pathology service as directed by the Head of Department.</p> <p>1.2 Under the supervision of Consultant Chemical Pathologists and Clinical Biochemists, takes part in:</p> <ul style="list-style-type: none"> • Reporting and interpretative commenting of biochemistry results. • Validation of results • Liaising with hospital medical staff in the follow-up of abnormal biochemistry results and advice on appropriate further investigations. • Participation in Duty Biochemist roster. • Supervision of outpatient laboratory investigations and dynamic function tests. <p>1.3 Participates in educational activities within and outside the organisation, as required by the Royal College of Pathologists of Australasia and its Western Australian Branch.</p> <p>1.4 Participates in laboratory administration and management;</p> <ul style="list-style-type: none"> • Involvement in evaluation of laboratory equipment and new methods. • Participation in quality control and quality assurance. <p>1.5 Participates in appropriate research and development projects where requested.</p> <p>1.6 Will be familiar with, and will uphold the vision, mission and values of PathWest and adhere to PathWest’s code of conduct.</p>
2.	<p>Clinical</p> <p>2.1 Monitor own competence and seek assistance from Consultant if uncertain about any aspects of clinical work.</p> <p>2.2 Provide consumer centred medical care to patients. This includes communicating with the patients at their level of understanding about their condition and management, or with the immediate family when the patient is unable to comprehend within their scope of knowledge, as well as counselling patients and their carers, and providing information and advice on healthy lifestyle choices and promoting preventative health care.</p> <p>2.3 Provide ongoing evaluation of patients under the Consultants care which includes (but not limited to) history taking, physical evaluation, formulating differential diagnoses and organising further investigations/diagnostic tests, as appropriate.</p> <p>2.4 Communicate and co-ordinate, within the multidisciplinary team, in regard to management plans, drug prescriptions and diagnostic requests, consultations and discharge plans which are to be reviewed daily and ensuring patients are involved in the decision making of their care.</p> <p>2.5 Take a leadership role in the ongoing care of ward and clinic patients which includes ensuring ongoing clear communication to junior medical staff and other members of the team/ ward staff on daily patient management and discharge plans, prescribing medications and any other relevant therapeutic interventions necessary for patient wellbeing.</p> <p>2.6 When indicated and in conjunction with the team Consultant, communicate referral of patients to other medical specialists.</p> <p>2.7 Provide advice and support, within the scope of clinical knowledge, to colleagues and other health professionals that are both internal and external to PathWest.</p>

JOB DESCRIPTION FORM

PAGE 3 OF 4

REGISTRAR – TRAINEE – CLINICAL BIOCHEMISTRY YEAR 1-7, POSITION NO. 004211

3.	Education/Training/Research 3.1 Participate and engage in continuing professional development and educational activities. 3.2 Initiate and participate in the education and training of medical students, interns, residents and other members of the multidisciplinary team through ward rounds, formal presentations, tutorials and other modalities 3.3 Participate in evidence based clinical research and audit activities relevant to speciality. 3.4 Participate in mandatory training activities to ensure compliance with PathWest Laboratory Medicine WA Service policy. 3.5 Complete an end-of-term and annual professional development review of performance with the Head of Department or Departmental Supervisor of Training.
4.	Other 4.1 Performs duties in accordance with organisational Policies and Procedures 4.2 Performs duties in accordance with relevant Occupational Health and Safety and Equal Opportunity Legislation 4.3 Conducts duties in a manner that is ethical and promotes a positive image of PathWest Laboratory Medicine WA 4.4 Participates in Performance Planning and Review. 4.5 Performs other duties as directed.

JOB DESCRIPTION FORM

PAGE 4 OF 4

REGISTRAR – TRAINEE – CLINICAL BIOCHEMISTRY YEAR 1-7, POSITION NO. 004211

SECTION 5 - SELECTION CRITERIA

ESSENTIAL MINIMUM REQUIREMENTS

1. Eligible for registration by the Medical Board of Australia.
2. Demonstrated clinical and procedural experience in a range of medical disciplines.
3. Demonstrated ability to provide medical education, teaching, supervision, training and support.
4. Demonstrated verbal and written communication skills and interpersonal skills to effectively interact with patients, their families, medical students, junior doctors and staff at all levels.
5. Demonstration organisational and time management skills.
6. Knowledge and understanding of continuous quality improvement principles.
7. Effective participation in a multi-disciplinary team.

DESIRABLE REQUIREMENTS

1. Registration as a Trainee with the Royal College of Pathologists of Australasia.
2. Demonstrated commitment to ongoing education and research in Western Australia hospitals.
3. Monitors and reviews own clinical effectiveness, noting limitations and putting in place strategies to address these.
4. Shows commitment to continuous improvement of patient outcomes.
5. Current knowledge and commitment to Equal Opportunity in all aspects of employment and service delivery.

SECTION 6 – APPOINTMENT FACTORS

- Evidence of Registration by the Medical Board of Australia must be provided prior to commencement.

ALLOWANCES/SPECIAL CONDITIONS/PRE-EMPLOYMENT REQUIREMENTS:

- **Successful criminal record clearance** as per Department of Health's Criminal Record Screening Policy.
- **Completion of identification check required.**
- **Successful Pre-Employment Health Assessment required.**
- **Successful Pre-Employment Integrity checks required.**

SPECIALISED EQUIPMENT OPERATED

CERTIFICATION

The details contained in this document are an accurate statement of the duties, responsibilities and other requirements of the position.

DIRECTOR OF PATHOLOGY NMHS

CHIEF PATHOLOGIST

SIGNATURE

SIGNATURE

DATE

DATE

As occupant of the position I have noted the statement of duties, responsibilities and other requirements as detailed in this document.

NAME	SIGNATURE	DATE APPOINTED TO POSITION	DATE