



Charles Sturt
University

Position Description



Scholarly Teaching Fellow/Lecturer in Occupational Therapy

School of Community Health

Faculty of Science

Classification	Level B
Delegation Band	Delegations and Authorisations Policy (see Section 3)
Nature of Employment	Continuing
Workplace Agreement	Charles Sturt University Enterprise Agreement
Date Last Reviewed	July 2020

Faculty of Science

The Faculty of Science delivers flexible, innovative [teaching programs](#) which provide graduates with the skills and knowledge to build a career, advance their profession and contribute to their community. We currently have more than 9000 students and over 500 staff dedicated to advancing scientific knowledge.

We are a leader in strategic and applied [research](#) in a wide array of sciences. We enhance and extend knowledge, train and educate future researchers and provide scientific solutions to current challenges. We achieve this through ethical practice, professional collaborations, industry involvement and a commitment to continual improvement.

We also provide a range of health and other services to our regional communities through our [enterprise](#) activities.

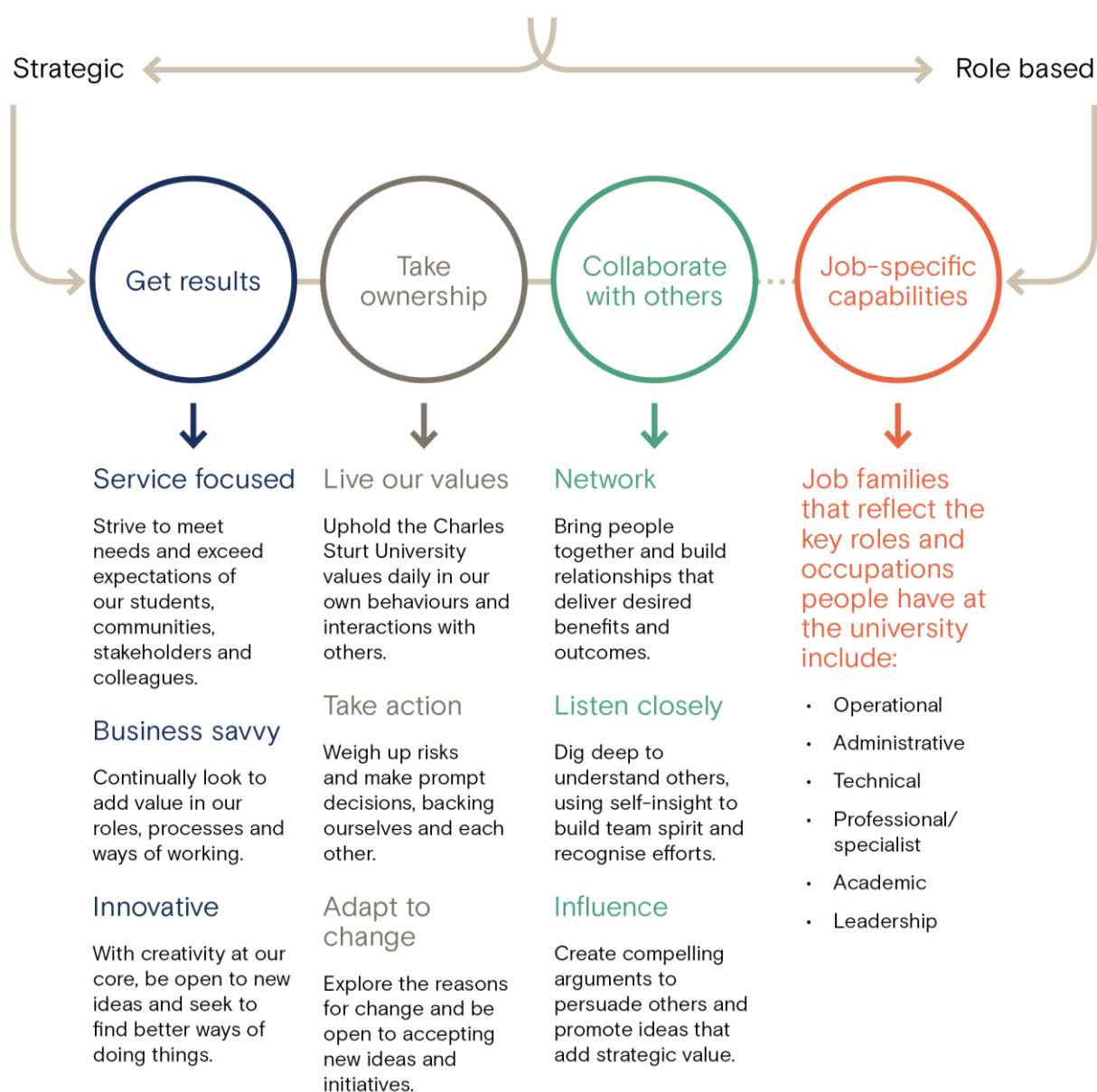
School of Community

The School of Community Health has a diverse range of staff who work together in the pursuit of excellence in teaching, research and community engagement. The School is focused on five professional courses including health and rehabilitation science, occupational therapy, physiotherapy, podiatry and speech pathology.

Staff in the School of Community Health are committed to working with regional and rural communities to train and graduate future health professionals; we use research to find answers to community questions; and we work together to support people to become agents for positive change within their community.

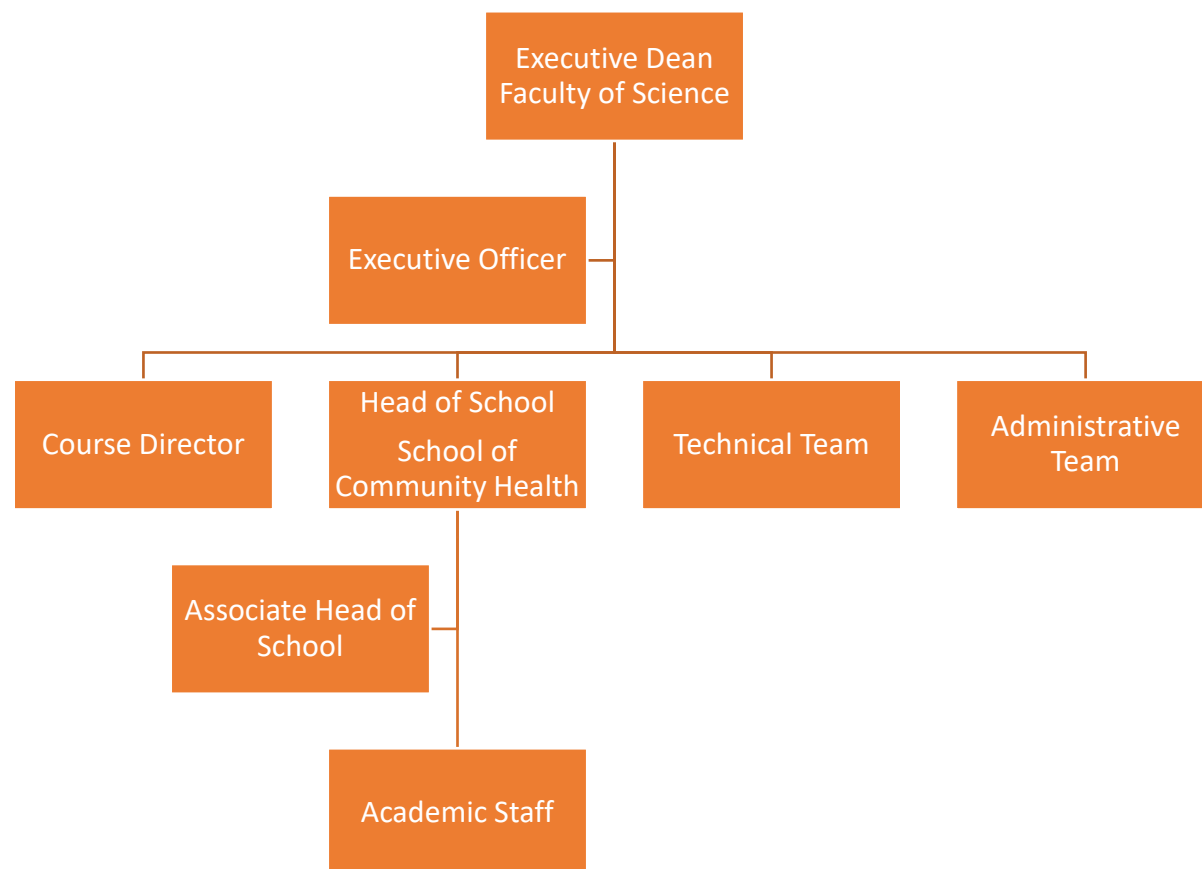


Our University Values





Organisational Chart



Reporting relationship

This position reports to: Head of School, School of Community Health

This position supervises: Nil

Key working relationships

- Head of School
- Associate Head of School
- Course Director
- Faculty and School Staff



Position overview

The Scholarly Teaching Fellow / Lecturer in Occupational Therapy will actively engage in teaching, research, curriculum development and student engagement related to the occupational therapy course in the School of Community Health. The fellow/lecturer will be expected to use blended models of subject delivery in teaching students, liaise effectively with the stakeholders of the course, participate in the administration and ongoing curriculum development, and progress an active research profile aligned to the strategic direction of the School. Clinical and/or research experience in rehabilitation and/or paediatrics is desirable.

This position may also be offered as a Scholarly Teaching Fellow under Clause 30 of the Charles Sturt University Enterprise Agreement 2018-2021. The Lecturer will be appointed to a teaching research work function unless employed under the Scholarly Teaching Fellow condition where a teaching focussed appointment will be allocated.

Principal responsibilities

- Apply Charles Sturt University's learning and teaching methodologies, processes, technologies and tools to deliver high quality student-centred learning opportunities in occupational therapy and as required to meet the teaching needs of the University. Achieve excellence in teaching in a range of delivery modes, which may include face to face and online teaching and assessment.
- Lecturers will be expected to conduct ethical, high quality research and contribute to knowledge through scholarship, publication and presentation. Both lecturers and scholarly teaching fellows are expected to utilise high quality research to underpin their teaching.
- Lecturers will be expected to develop and execute a research plan that aligns with Charles Sturt University's Research Plan and objectives including pursuing funding opportunities and maintaining up-to-date research records within Charles Sturt University's research database.
- Lecturers may be expected to supervise Research Higher Degree and Honours students according to their research experience.
- Build strong professional relationships with students and provide timely and appropriate consultation and feedback.
- Actively contribute to collaborative processes to design, deliver and continually improve high quality courses and learning experiences for students. This also includes active contribution to the governance, marketing and promotion, and administrative activities to facilitate the work of the Faculty/School.
- Provide leadership and management, as appropriate, in the convening, coordination and delivery of subjects and/or courses. This may include coordinating and/or leading other staff including casual academic staff.
- Proactively develop and foster relationships with a range of stakeholders including community, government departments, and professional bodies that bring direct benefit to the strategic work of the University, in terms of teaching, workplace learning, course profile and/or areas of research strength.
- Maintain a sound and current knowledge and understanding of occupational therapy through industry engagement and/or scholarly activities or similar.
- Contribute to the development and improvement of policy and practice through involvement in professional/industry associations, accreditation authorities, conference organisations, advisory bodies, and national or international delegations, consistent with the University's Outside Professional Activities Policy.



Physical capabilities

The incumbent may be required to perform the following.

Work in other environments beyond the school, such as other campuses, as well as possible car and air travel and work with a diverse range of staff, students and community members.

- On occasion drive a university vehicle distances up to 500km per day within the terms of the university's [Driving Hours Guidelines and Policy](#).
- Perform in an accurate and timely manner push/pull, reaching, grasping, fine manipulation tasks, including lifting items up to 10kg.
- Possess the physical ability to carry out shelving duties, such as frequent bending, reaching/stretching, squatting and repetitive lifting.



Selection criteria

Applicants are expected to address the selection criteria when applying for this position.

Essential for appointment as Lecturer - Level B

- A. Doctoral or Master degree relevant to occupational therapy or equivalent experience, accreditation and professional standing AND eligibility for Ahpra registration as an occupational therapist;
- B. A record of teaching and/or research/publication or professional activity relevant to the discipline area, which demonstrates a capacity to make an autonomous contribution;
- C. Sound knowledge and understanding of contemporary occupational therapy gained through industry experience and/or scholarly activities or similar, including occupational therapy practice in rural and regional areas;
- D. Demonstrated ability to contribute to course and subject design, and to deliver high quality student-centred learning and teaching at an undergraduate level that includes the capacity to incorporate new technologies and new approaches to teaching and learning.
- E. Demonstrated ability to build partnerships, effectively liaise with academic colleagues and work as a team member AND demonstrated effective communication and interpersonal skills including applying culturally respectful, inclusive and safe practices in the workplace.

Desirable

- F. Clinical and/or research experience in rehabilitation and/or paediatrics.
- G. Previous online academic experience.

