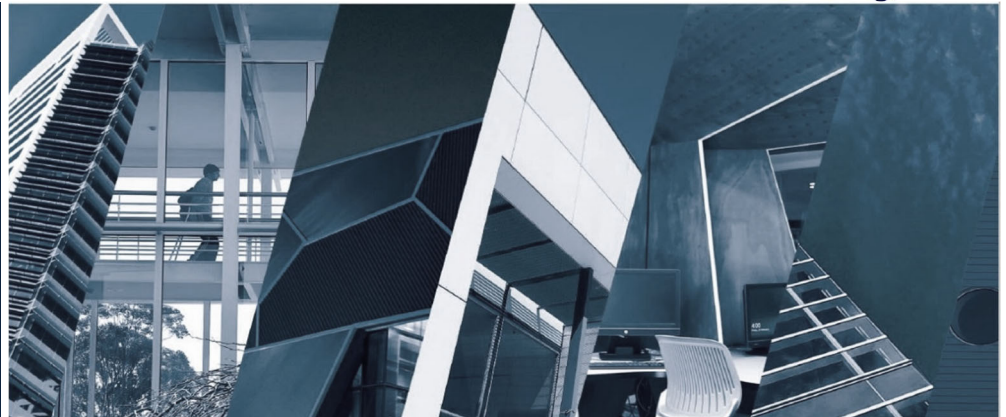


# Position Description



Position title:	Senior Lecturer, Social Work/Community and Human Services
School/Directorate/VCO:	School of Arts
Campus:	Berwick Campus. Travel between campuses may be required.
Classification:	Academic Level C
Time fraction:	Full-time
Employment mode:	Continuing employment
Probationary period:	This appointment is offered subject to the successful completion of a probationary period.
Further information from:	Professor Andrew Hope, Dean, School of Arts Telephone: (03) 5327 6768 E-mail: a.hope@federation.edu.au
Recruitment number:	850089

## Background

At Federation University, we are driven to make a real difference to the lives of every student, and to the communities we serve.

We are one of Australia's oldest universities, known today for our modern approach to teaching and learning. For 150 years, we have been reaching out to new communities, steadily building a generation of independent thinkers united in the knowledge that they are greater together.

Across our university and TAFE campuses in Ballarat, Berwick, Brisbane, Gippsland, and the Wimmera, we deliver world-class education and facilities. With the largest network of campuses across Victoria, as well as a growing Brisbane base, we are uniquely positioned to provide pathways from vocational education and skills training at Federation TAFE through to higher education.

This position description is agreed to by

Employee name

Signature

Date

## Portfolio

Federation University Australia School of Arts offers qualifications from certificate and diploma through to degree and postgraduate levels in the liberal arts (humanities and social sciences), community services and rural social welfare, and visual and performing arts. Our programs operate across our Victorian campuses and in partnership with TAFE institutes, community education providers and schools across Victoria and interstate. We are a vibrant learning community with outstanding lecturers and researchers. Our contemporary curriculum is typically delivered through 'blended' mode, combining high quality online learning with face-to-face seminars, workshops and studio practice. At the School of Arts, we pride ourselves on our high quality teaching in a personalised learning environment. There are many opportunities for work placement, internships, major projects, professional experience and excursions. As a result, our graduates enjoy among the best employment outcomes in Australia.

## Position summary

Appropriate to a Level C appointment, the Senior Lecturer, Social Work/Community and Human Services will be expected to:

- contribute to the development and delivery of courses at undergraduate and graduate levels;
- contribute to the School's research program by participating in research activities and developing or maintaining an active research profile; and
- contribute to the School's administrative functions.

## Key responsibilities

1. Provide leadership in developing, teaching, coordinating, and moderating courses in Social Work/Community and Human Services at undergraduate and graduate levels.
2. Undertake teaching and assessment of undergraduate and postgraduate students within the area of Social Work/Community and Human Services and other cognate disciplines.
3. Supervise students undertaking project courses, honours programs and research higher degrees.
4. Making a significant contribution to research activity within the School.
5. Participate in team projects and various committee meetings as required.
6. Contribute significantly to the administrative functions of the School undertaking and overseeing broad administrative functions within the School.
7. Other responsibilities applicable to a Level C academic under current minimum standards for Academic Levels, as assigned by the Dean, Deputy Dean and Discipline Lead.
8. Reflect and embed the University's strategic purpose, priorities and goals when exercising the responsibilities of this position. For a more complete understanding and further information please access the Strategic Plan at: <https://federation.edu.au/about-us/our-university/strategic-plan>.
9. Undertake the responsibilities of the position adhering to:
  - The Staff and Child Safe Codes of Conduct and Conflict of Interest Policy and Procedure;
  - Equal Opportunity and anti-discrimination legislation and requirements;
  - the requirements for the inclusion of people with disabilities in work and study;
  - Occupational Health and Safety (OH&S) legislation and requirements; and
  - Public Records Office of Victoria (PROV) legislation.

## Level of responsibility

The Senior Lecturer, Social Work/Community and Human Services will be expected to work independently in the conduct of teaching and research activities, and assume a leadership role within the School in one or more of the areas of teaching, research and administration.

## Training and qualifications

A doctoral qualification is required.

The applicant must be eligible for membership of the Australian Association of Social Workers (AASW).

The Senior Lecturer, Social Work/Community and Human Services will also have completed the Graduate Certificate in Education (Tertiary Teaching) or equivalent. If the Senior Lecturer, Social Work/Community

and Human Services does not hold this qualification, they will be required to complete the qualification through the University's Centre for Learning Innovation and Professional Practice upon commencement of their employment (for further information, go to: <https://federation.edu.au/staff/learning-and-teaching/professional-development/award-programs/graduate-certificate-in-education-tertiary-teaching-gcett>).

### **Position and Organisational relationships**

The Senior Lecturer, Social Work/Community and Human Services will work under the broad direction of the Dean and Head of School/Deputy Dean, and work as part of the School's team of academic and administrative staff.

### **Key selection criteria**

Applicants must demonstrate they are able to undertake the inherent responsibilities of the position as contained in the position description and are able to meet the following key selection criteria:

1. A doctoral qualification.  
Eligible for membership of the Australian Association of Social Workers (AASW).
2. Graduate Certificate in Education (Tertiary Teaching) or equivalent or willingness and commitment to complete this qualification upon commencement of employment.
3. Demonstrated commitment to and enthusiasm for teaching and learning, and a good teaching record.
4. Demonstrated commitment and ability to develop and implement a student-centred approach with a focus on student success, including the ability to monitor student success initiatives.
5. Demonstrated record of high-quality research activity and outcomes such as publications, external grants or consultancies in the field at the national level.
6. Demonstrated capacity to supervise postgraduate students.
7. Capacity to work independently, as well as part of a team.
8. Organisational and administrative abilities necessary for the construction, coordination and administration of courses.
9. Substantial University administrative experience.
10. Excellent interpersonal, oral and written communications skills and an ability to relate well to students and other University staff.
11. Knowledge and understanding of the needs, including learning needs, of a diverse range of students, including those with disabilities.
12. Demonstrated alignment with the University's commitment to child safety.

***The University reserves the right to invite applications and to make no appointment.***

*It is not the intention of the position description to limit the scope or accountabilities of the position but to highlight the most important aspects of the position. The aspects mentioned above may be altered in accordance with the changing requirements of the role.*

## Key Minimum Standards for Academic Levels (MSALs)

Teaching and research academic staff

### Level C

A Level C academic will make a significant contribution to the discipline at the national level. In research and/or scholarship and/or teaching he or she will make original contributions, which expand knowledge or practice in his or her discipline.

A Level C academic will normally make a significant contribution to research and/or scholarship and/or teaching and administration activities of an organisational unit or an interdisciplinary area at undergraduate, honours and postgraduate level. He or she will normally play a major role or provide a significant degree of leadership in scholarly, research and/or professional activities relevant to the profession, discipline and/or community and may be required to perform the full academic responsibilities of and related administration for the co-ordination of a large award program or a number of smaller award programs of the institution.

*The standards are not exhaustive of all tasks in academic employment, which is by its nature multi-skilled and involves an overlap of duties between levels.*

Federation University Australia  
Union Enterprise Agreement  
2019–2021  
Academic and General Staff Employees