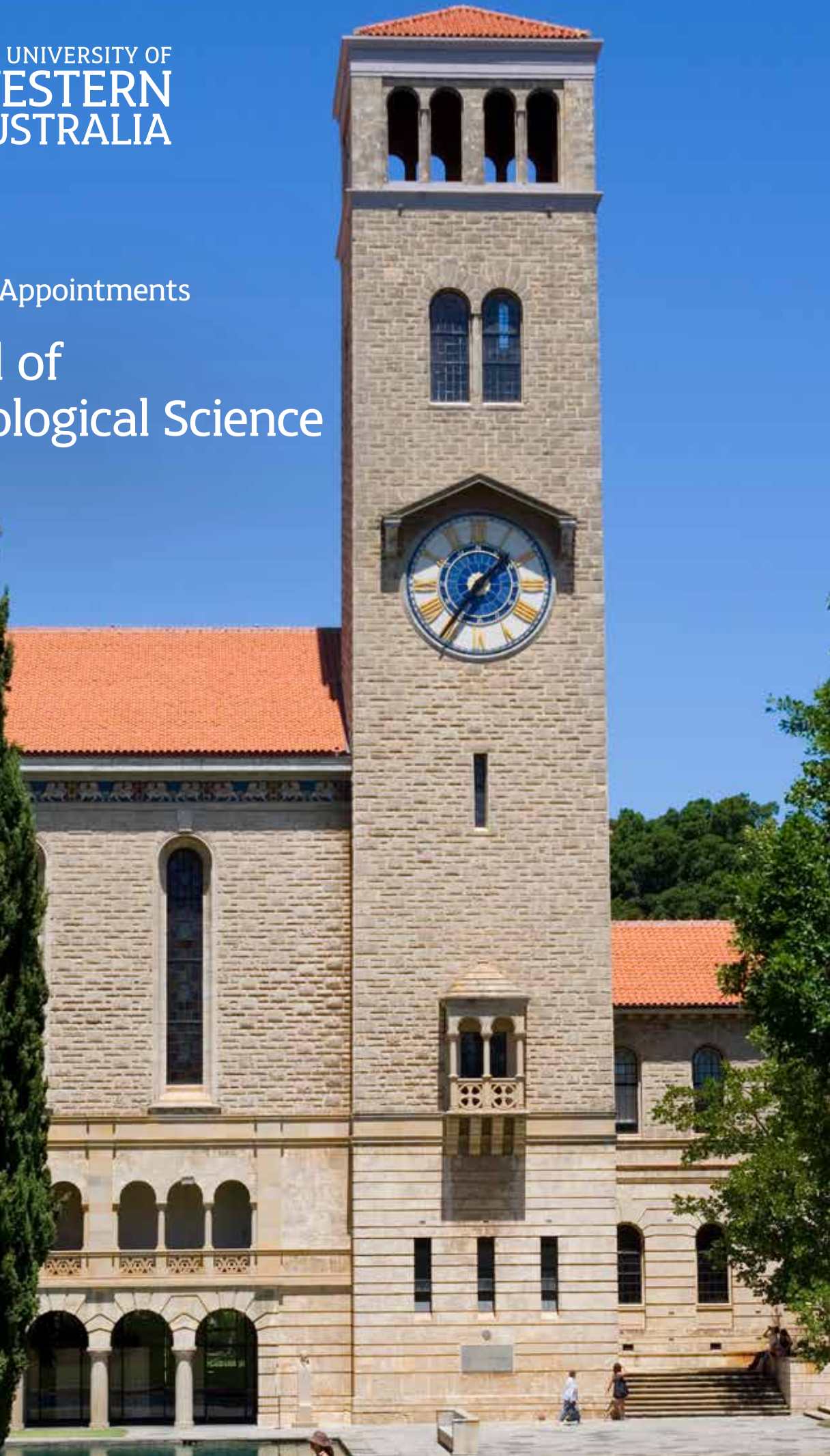




THE UNIVERSITY OF
**WESTERN
AUSTRALIA**

Academic Appointments

School of Psychological Science





Thank you for
your interest in the
opportunities available
in the School of
Psychological Science
at The University of
Western Australia
(UWA).

Welcome

Thank you for your interest in the positions available within the School of Psychological Science at The University of Western Australia (UWA).

It's an exciting opportunity to work with an institution at the most exciting and dynamic time in its history. With The University's Vision 2030 identifying the best ways to build on our strong reputation for excellence in teaching, learning and research, UWA is set to become an energetic centre for innovation, inspiring future students, staff and stakeholders alike to make a global impact.

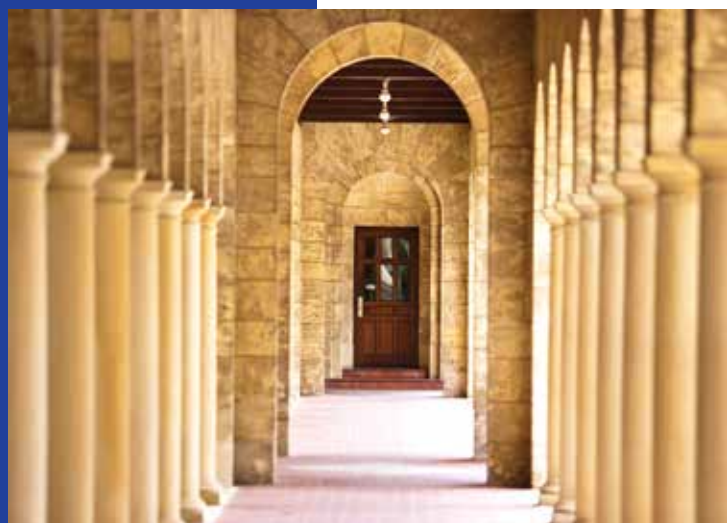
Joining UWA will put you at the forefront of excellence, where you can challenge convention and make the most of unlimited possibilities. It's not just one of the top 100 universities in the world, it's an environment in which you can make a real difference – and encourage others to do the same.

We offer access to an exceptional support network committed to creating change, from membership in the Group of Eight – a coalition of leading Australian universities – to colleagues who are academic leaders in the broadest sense, having established international reputations as outstanding teachers and researchers.

We look forward to hearing from like-minded candidates.



Professor Dawn Freshwater
Vice-Chancellor



The University of Western Australia

At UWA, you can work alongside dynamic and forward-thinking colleagues who, like you, are determined to challenge convention and drive innovation.

The University is in the top 100 universities in the world and is one of Australia's most respected research institutions. We operate more than 130 research and training centres, and enjoy a broad range of successful industry partnerships. The strength of our research culture means we attract high levels of competitive funding, and receive roughly 80 per cent of all research funding to Western Australian universities each year.

UWA is 91st in the 2019 QS World University Rankings, climbing seven places in the last three years, and has maintained a perfect score of 100 in the International Faculty ratio (measuring the number of international staff per 100 faculty members). The Academic Ranking of World Universities 2018 places us 93rd, while the Times Higher Education (THE) World University Rankings rates us 134th globally. In the Good Universities Guide 2019 we gained a five-star rating in Student Retention, and maintained our five-star rating for Student-teacher Ratio and Student Demand.

At UWA, we help people make the most of the possibilities presented to them. We are a community driven by a desire to make the most of our collective potential and to contribute to the world's advancement. Join us and pursue your ambitions.

uwa.edu.au





Vision

To become recognised as one of the world's top 50 global universities by 2050.



Mission

To provide world-class education, research and community engagement for the advancement of prosperity and welfare of our communities.

University governance and management

The University is governed by the Senate, comprising up to 17 members from a range of backgrounds including community, staff, students and graduates.

Chaired by the Chancellor, the Hon. Robert French, the key roles of the Senate are:

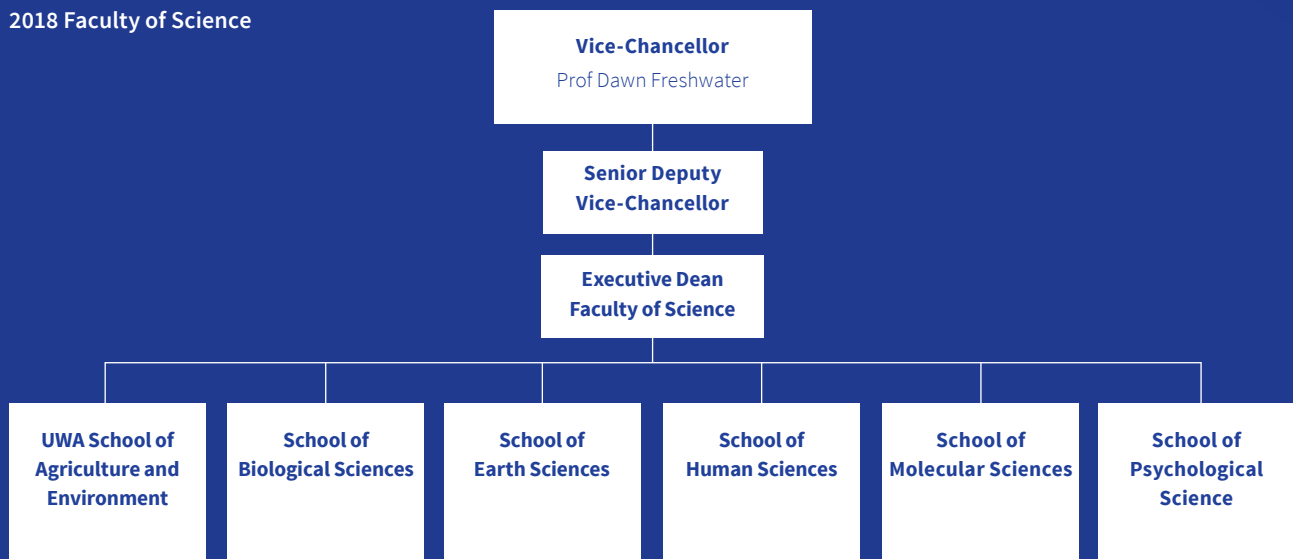
- providing a broad overview of strategic directions in the University
- overseeing corporate governance
- performance monitoring
- taking legislative responsibility
- supporting, guiding and monitoring the performance of the Vice-Chancellor

Key stats

Student enrolments 2017	24,327
Total staff (FTE) 2017	3,264
Research publications 2017	5,594



2018 Faculty of Science



Key institutional networks

Group of Eight

The Group of Eight is a coalition of leading Australian universities that advocate intensive research and comprehensive general and professional education.

go8.edu.au

Matariki Network of Universities

This international group of seven universities across seven nations focuses on strong links between research and undergraduate teaching, promoting international best practice in research and education.

matarikinetwork.com

Worldwide Universities Network

The major issues facing our planet are so great that no single institution or organisation can address them alone. The WUN brings together world-leading academic partners to address these global challenges.

wun.ac.uk





The Faculty of Science

The Faculty of Science, which is internationally renowned for its excellence in teaching and research. The University of Western Australia is rated above world standard in 38 fields of research, and 79% of these are a science field. The diverse nature of the Faculty of Science provides unique opportunities for research and student training. The Faculty is, therefore, well positioned to play a leading role in defining Australia's future. We have world leading expertise across a diversity of disciplines embracing agricultural, biological, chemical, earth, environmental, human, molecular and psychological sciences. This excellence is founded on our core disciplinary strengths. We are building on these core strengths to deliver an innovative, cross-disciplinary research agenda through six strategic research themes where our expertise at UWA is ideally placed to have a transformative impact. These themes are: Preventing, Diagnosing and Treating Disease; Energy and Mineral Resources for a Sustainable Future; Furthering Knowledge and Serving Humanity; Managing and Restoring the Natural Environment; Feeding the World; and Enhancing Physical, Mental and Social Wellbeing and Performance.

School of Psychological Science

The School of Psychological Science comprises over 40 staff who deliver a world-class research and education experience to approximately 5,000 undergraduate and postgraduate coursework students. The School is also responsible for the research training of over 130 PhD students. In the last year alone, 13 staff have received more than 20 commendations for outstanding teaching by the Faculty, the University, or the Student Guild.

The School is research intensive with internationally recognized expertise in Human Factors, Industrial and Organisational Psychology, Social and Personality Psychology, Perception, Cognition, Developmental Psychology, Neuropsychology and Abnormal Psychology. The School also hosts the Centre for Advancement into Research in Emotion (CARE) headed by ARC Laureate Fellow, Professor Colin MacLeod.

The School's strengths have been recognised internationally, with Psychology at UWA ranked in the top 100 in both the QS World University rankings by subject, and in the recent ARWU rankings, up from the top 150 this year. UWA has received the highest rating of 5 for Psychology in each of the three rounds of the national Excellence in Research for Australia (ERA) evaluations: an achievement matched by only one other Australian university.

These rankings reflect the quality of the staff in the School, our strong undergraduate and postgraduate programs, the School's capacity to attract substantial research grant funding and the high citation rates of our publications.

science.uwa.edu.au/schools/psychological-science

Message from Head of School, Psychology

As part of a strategic plan to grow Psychological Science at UWA, the Faculty of Science will be appointing up to three new academic staff within the School of Psychological Science. Applications are invited for two roles at Level B/C specialising in psychology and applied psychology, and one at Level C/D specialising in clinical psychology.

The successful candidates will be expected to capitalise on the supportive research environment of the School, establish productive collaborations and projects likely to attract external research funding and maintain a strong record of publication in highly ranked journals. Advanced expertise in the relevant discipline will enable the appointee to contribute to the School's undergraduate or postgraduate programs through unit coordination, teaching and research supervision.

The School runs advanced postgraduate training in Industrial and Organisational Psychology, Clinical Psychology, Clinical Neuropsychology, and Autism diagnosis. Of our 130 PhD students, 70% combine their PhD with an applied masters. We will shortly be launching new postgraduate courses in business psychology and foetal alcohol syndrome disorder diagnosis.

I invite you to consider the exciting opportunities available through these positions in a Group of Eight, research-intensive University, with a reputation for international excellence and the vitality and excitement of innovative research in this beautiful city.

Romola Bucks
Head of School
School of Psychological Science

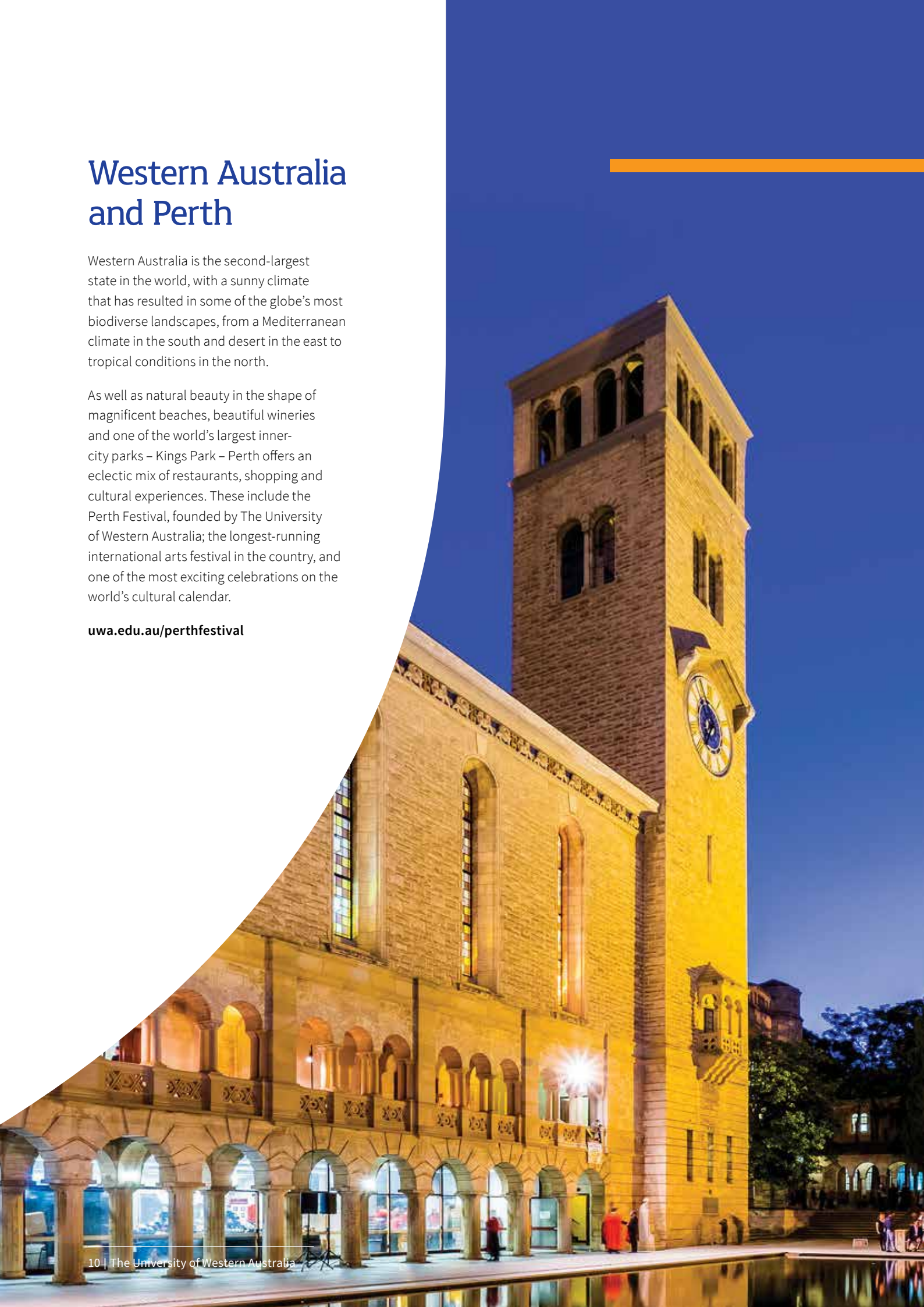


Western Australia and Perth

Western Australia is the second-largest state in the world, with a sunny climate that has resulted in some of the globe's most biodiverse landscapes, from a Mediterranean climate in the south and desert in the east to tropical conditions in the north.

As well as natural beauty in the shape of magnificent beaches, beautiful wineries and one of the world's largest inner-city parks – Kings Park – Perth offers an eclectic mix of restaurants, shopping and cultural experiences. These include the Perth Festival, founded by The University of Western Australia; the longest-running international arts festival in the country, and one of the most exciting celebrations on the world's cultural calendar.

uwa.edu.au/perthfestival





The available roles are:

- Lecturer or Senior Lecturer (Psychology) – Level B or C
- Lecturer or Senior Lecturer (Applied Psychology) – Level B or C
- Senior Lecturer or Associate Professor (Clinical Psychology) – Level C or D

To view the roles in more detail, please visit www.jobs.uwa.edu.au or click on the above links.

Purpose of the roles

Contributing to two of the six strategic themes, the appointees to these roles will contribute to ‘Preventing, Diagnosing and Treating Disease’ and ‘Enhancing Physical, Mental and Social Wellbeing and Performance’ by playing a leading role within the School of Psychological Science in advancing research and teaching.

The successful candidates will make a major contribution to developing the international research reputation of the School as a global leader in their field. This will involve establishing and strengthening innovative and productive research collaborations within the School, across cognate disciplines within UWA, with international experts, and with industry partners. It is expected that the individuals appointed to the positions will attract substantial external research funding.

The appointees also will play a key role in developing and delivering research-led teaching in their field. These responsibilities will include teaching within undergraduate and postgraduate programs, supervising research students at honours and postgraduate levels and, where appropriate, contributions to postgraduate applied training and supervision.



Key responsibilities

Research and Scholarships

- Creating significant new knowledge that is disseminated through means that will substantially enhance the international reputation of the School and University (e.g., publication in highly ranked peer reviewed journals of international standing)
- Developing a strong team that makes significant contributions to psychological research in local, national, and international arenas in keeping with the School's priorities
- Developing a substantial network of collaborators across local, national, and international universities, to enhance research capacity and interdisciplinary linkages, and support high impact research that will enhance the reputation of the School and University
- Providing leadership in curriculum development, coordination, and teaching, particularly concerning topics relevant to their discipline of psychological science, to ensure that students receive a firm grounding in this aspect of the discipline
- Play a leading role in bids for major research funding from national competitive funding agencies, from international funding agencies, and from industry and government partners

Teaching and Learning

- Contribute to or provide leadership in postgraduate curriculum development and teaching, in addition to the supervision of Honours and Masters or PhD student projects within this field of research
- Contribute to or take a leading role in developing the undergraduate curriculum to ensure excellent student training concerning the factors that contribute to psychological resilience
- Contributing high quality teaching
- Where appropriate, developing and supervising student placements to strengthen researcher industry partnerships

Services

- Contributing to the governance and collegial life within the School, across the Faculty and University and more broadly outside the institution including school and faculty governance. Working within the legislative requirements of the University and supporting the University's commitment to equity
- Representing UWA through involvement in professional associations, conferences, and other external activities

Conditions of employment

An attractive and flexibly constructed remuneration package will be negotiated and will include:

- Tenurable (i.e., subject to satisfactory 3-year probation, this is a tenured position)
- Employer contribution to superannuation of 17% (standard employee contribution is 7%)
- Recreation leave of 20 working days per annum
- Long service leave (3 months leave per 10 years of service)
- Eligibility for sabbatical leave
- Opportunity to undertake consulting work, within policy guidelines
- Relocation assistance including airfares for the appointee and dependents and short-term accommodation on arrival



Applications

Thank you for your interest. If you wish to proceed, the following information will assist you with your application.

Your application must include the following:

- A statement that clearly demonstrates the extent to which you satisfy each of the selection criteria
- A curriculum vitae that provides your personal details, qualifications and work history
- A list of publications; and
- The names, email, and telephone contact details of three referees who can be contacted for a confidential report

Please note that your permission will be sought before referees are contacted.

The University of Western Australia provides visa sponsorship for international appointees.

Lodging your application

Applications must be submitted online at:
jobs.uwa.edu.au

Closing date for application is Sunday, 17 February 2019

If you would like to discuss any of the positions in confidence, please contact:

Professor Romola Bucks
Head of School
Phone : +61 8 6488 3232
Email: headschoo-psy@uwa.edu.au

A/Professor Shayne Loft
Deputy Head of School
Phone : +61 8 6488 4610
Email: shayne.loft@uwa.edu.au



The University of Western Australia
M053, 35 Stirling Highway
Perth WA 6009
[www.science.uwa.edu.au/schools/
psychological-science](http://www.science.uwa.edu.au/schools/psychological-science)