

# ANU wants you

INFORMATION FOR  
PROSPECTIVE CANDIDATES

---

**Director, Research School of Biology**

ANU COLLEGE OF  
**SCIENCE**



Australian  
National  
University





INFORMATION FOR PROSPECTIVE CANDIDATES

# Welcome to ANU

For over 72 years, the Australian National University has been the educational home to some of the most remarkable people from across the world: visionaries, influential leaders, researchers and individuals creating impact and change nationally, regionally and globally.

This, coupled with our role as the national university means we have a responsibility to be ambitious, bold and transformative in our approaches to teaching and learning. We are poised to provide the next generation of leaders and global citizens with the skills required for the challenges and jobs of the future.

The University is set in beautiful grounds close to the heart of the city of Canberra and Parliament House. As the national university, our researchers have a special relationship with the Commonwealth Government, providing expert advice to Australia’s leaders and decision makers, to ensure the advancement of the Australian nation.

Contributing to the strategic vision of the University is the role of Director, Research School of Biology within the ANU College of Science. As a member of the College Executive team, your strategic leadership will contribute to advancing the University’s reputation as one of the world’s great universities.

We are looking for people who find true joy in research, in following an idea to see where it will lead because it is exciting. For teachers who know what it is to truly inspire others, who take huge satisfaction in the moments where students finally understand a difficult concept or solve a great problem. We seek people with passion, who want to go beyond established boundaries and forge new paths to the future.

So if you would like the opportunity to be extraordinary, then ANU will nurture you to achieve your potential.

**Professor Brian Schmidt AC FAA FRS**

Vice-Chancellor and President  
The Australian National University



The Australian National University

**Professor Mike Calford**

Provost  
The Australian National University







# Message from the Dean, ANU College of Science

The Australian National University (ANU) is unique in Australia. Ranked number 24 in the world by QS<sup>1</sup>, and based in our capital city, ANU is charting a new strategic course to redefine the role of a contemporary national university.

The Australian National University (ANU) Research School of Biology is located in a purpose-built, state-of-the-art building on a beautiful campus, close to the heart of the national capital city of Canberra and Parliament House. The School has just celebrated its 51st anniversary and has a proud tradition of excellence in research and teaching in the biological sciences, with graduates of the School playing lead roles in academia, other research institutions, industry and government.

Research in the School encompasses the study of biological processes in microorganisms, plants, animals and humans. It is home to some 60 research groups, which for purposes of research support and administration are distributed between three Divisions: Biomedical Sciences and Biochemistry; Ecology and Evolution; and Plant Sciences.

The School is one of eight Schools and Centres comprising the ANU College of Science, which consists of the Research School of Astronomy and Astrophysics, the Research School of Biology, the Research School of Chemistry, the Research School of Earth Sciences, the Fenner School of Environment and Society, the Mathematical Sciences Institute, the Research School of Physics and Engineering, and the Centre for the Public Awareness of Science.

The School oversees the University's Biology curriculum, with a diverse offering of courses across both undergraduate and graduate degrees. The Biology Teaching and Learning Centre coordinates all biology teaching across the campus and has strong linkages with the Research School of Chemistry,

the John Curtin School of Medical Research, the Fenner School of Environment and Society, and the Research School of Psychology.

We are looking for a Director who can lead the Research School of Biology in the next phase of its evolution, who will be an effective advocate for the School, and who will work collegially with the other senior staff of the university to achieve the strategic aims of the College and the University.

If you are a proven leader, with an excellent research track record and a vision for biology education and research in the twenty first century, the Directorship of the ANU Research School of Biology presents an exciting opportunity for you.

I look forward to hearing from you.



**Professor Kieran Kirk**  
Dean, ANU College of Science  
The Australian National University

1) 2018/19 Quacquarelli Symonds (QS) World University Rankings.



# The Director, Research School of Biology

## Selection criteria

The person appointed as Director of the ANU Research School of Biology, will be an outstanding leader who fosters excellence in the School's research, education and engagement, ensuring that all aspects of the School (including financial and staffing) are managed effectively.

The Director is a member of the Executive of the College of Science, reporting to the Dean and working collegially with other members of the College Executive team, including the Directors of the other Research Schools in the College, the College's Associate Deans and the College General Manager.

The Director is supported by a school-based administrative team which works closely with functional administrative teams within the College.

The Director will:

- > Maintain and promote a strong culture of research within the School, through developing and encouraging innovative high-quality research, the acquisition of grants and involvement in consultancies.
- > Maintain and enhance a range of innovative, research-led educational programs (including undergraduate, graduate and Higher Degree Research programs) and ensure the quality of the curriculum and quality of delivery of these programs.
- > Promote, foster and establish relationships within and outside the University sector in biology.
- > Implement appropriate outreach strategies and take actions to enhance the national and international profile of the School and the University.
- > Work with the Dean and with other members of the College Executive in implementing the College's education and research planning.
- > Develop a Strategic plan for the School ensuring its integration in the overall College and University plans.
- > Develop and manage budgets in consultation with the College Dean and allocating resources within the School in a transparent manner.
- > Align staffing resources and expertise to ensure achievement of the strategic and operational goals of the College.
- > Participate as a member of the College Executive to ensure alignment of the School's activities with the broader needs of the College and University.
- > Provide advice to the College Dean and contributing to College/University strategic matters as requested.
- > Develop a collegial and consultative environment in the School.
- > Comply with all ANU policies and procedures and in particular those relating to work health and safety and equal opportunity.

1. An internationally recognised outstanding academic and/or professional career in biology and demonstrated ability to provide strategic academic leadership.
2. Experience and expertise in the provision of strategic planning, management and leadership skills within a high-profile academic environment, including management of large-scale university research and educational programs.
3. An ability to enhance and develop the School's and University's national and international reputation and performance in education and research in biology.
4. A capacity to develop a collegial and consultative environment within the School, as well as communicate effectively within the School and among the three Divisions, and with a broad range of internal and external stakeholders in order to secure positive outcomes for the University.
5. Highly developed interpersonal skills with the ability to work with, and to lead, teams in a collegial fashion.
6. A demonstrated high-level achievement in relation to incorporation of EO principles into strategic planning and the capacity to accept devolved responsibility for achievement of equity and diversity strategies.





# The Research School of Biology

In the 2018 ‘Excellence in Research for Australia’ (ERA) evaluation, all of the research fields represented in the Research School of Biology were rated as ‘Well Above World Standard’ (i.e. the maximum score of ‘5’). These fields include Biochemistry and Cell Biology, Ecology, Evolutionary Biology, Genetics, Microbiology, Plant Biology and Zoology.

The ANU also achieved a rating of ‘5’ in Ecological Applications, Environmental Science and Management, Crop and Pasture Production, and Forestry Sciences, fields to which the School makes a major contribution.

## The Research School of Biology

The ANU Research School of Biology (RSB) is internationally recognised for its high-impact research across a number of themes. RSB is currently home to 58 research group leaders, 14 research-active emeritus staff, 90 postdoctoral researchers, and over 150 postgraduate researchers from around the world. Underpinning RSB’s research and educational endeavours is \$18M/year income from external research grants and activities, and \$28M/year of recurrent funding from government income and student fees.

Working across scales, researchers in the School conduct both fundamental and translational research, addressing major challenges in biology. The School maintains close links to other Schools and Colleges across the ANU and with researchers at the CSIRO on the Black Mountain campus adjacent to ANU.

The Research School of Biology has an exceptionally strong record in attracting Australian Research Council (ARC) Discovery Grants, DECRA and Future Fellowships and National Health and Medical Research Council Project Grants and Fellowships. Large-scale grants include two ARC Centres of Excellence, one ARC Research Hub, multiple ARC Linkage grants, two Bill & Melinda Gates Foundation projects, a large CSIRO Science & Industry Endowment Fund grant, grants from SANOFI, Merck and Medicines for Malaria Venture, and other several large grants linking RSB to industry and government sector partners.

Research in the School is supported by outstanding support staff and state-of-the-art infrastructure, both within the School itself and through access to ANU-wide facilities and centres (e.g. [Centre for Advanced Microscopy](#), [Joint Mass Spectrometry Facility](#), [Australian Phenomics Facility](#), [Australian Plant Phenomics Facility](#), Biological Data Sciences Institute, and [Australian Cancer Research Foundation Bio-molecular Resource Facility](#)). The School conducts research, research training (MPhil and PhD), Masters and undergraduate education in a wide range of biological and biomedical sciences, within three Divisions:

[Division of Biomedical Science and Biochemistry \(BSB\)](#) - Research in BSB covers a wide range of disciplines, with scientists of international standing. The research in this Division focuses on two broad themes: host/pathogen biology and membrane proteins. Specific research fields within the Division include microbiology, parasitology, immunology and cancer biology, membrane channel biophysics, membrane transport and nutrition, evolution-developmental biology, bioinformatics and structural biology.

[Division of Ecology and Evolution \(E&E\)](#) - E&E has a strong reputation for developing theory that transcends specific taxa. It is internationally recognised in a number of areas including evolutionary, behavioural and molecular ecology, phylogenetics and population genetics, macroevolution and macro-ecology and physiological ecology. E&E use a wide range of approaches and study systems to address fundamental research questions from an evolutionary perspective.

[Division of Plant Sciences \(PS\)](#) - PS research spans translation of genomic sequences and its encoded information to whole-of-system characteristics of plant form and function. Research in the Division is focussed around four themes: photosynthesis and energy biology; plant environmental biology & functional ecology; plant genetics and regulation; and, plant-microbe interactions. In all themes, the Division is increasingly linking fundamental research with translation outcomes. PS is one of the world’s highest ranked plant science departments (2nd ranked in 2018 - ISI [Category Normalized Citation Impact](#) score) and is home to the 2018 [Kyoto Prize awardee \(Graham Farquhar\)](#).

The School’s [Computational Biology and Bioinformatics Unit](#) interacts with staff and students from all three Divisions. The School also houses the [ANU/CSIRO Centre for Biodiversity Analysis](#), and is part of the recently-established [ANU/CSIRO Centre for Entrepreneurial Agri-Technology](#).



Further information about the Research School of Biology found at [biology.anu.edu.au](http://biology.anu.edu.au)



The Research School of Biology - Organisational Structure

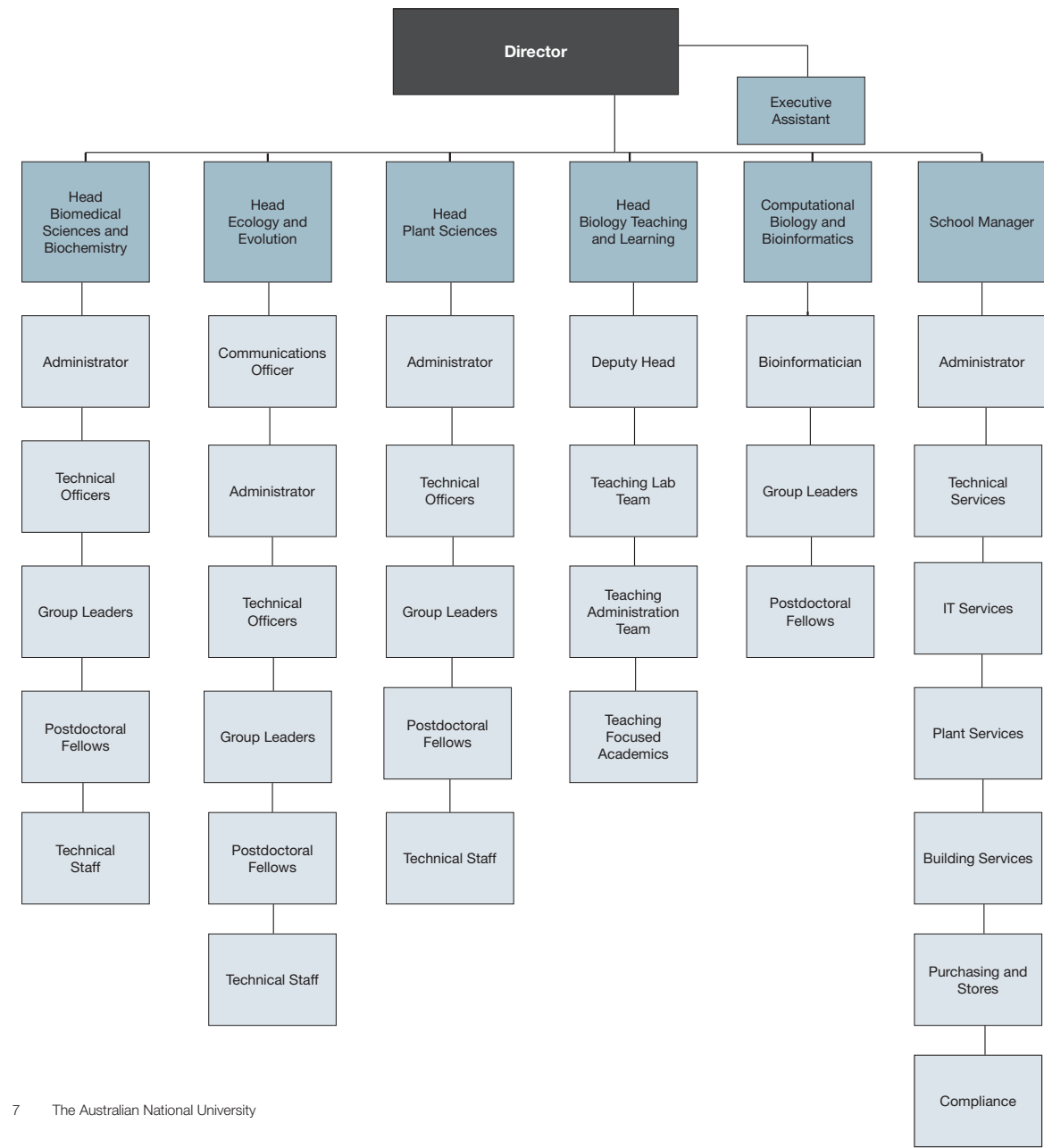
The Research School of Biology is led by a Director who has ultimate responsibility for strategic direction, the budget, and the operation of the School.

The RSB Executive Committee is comprised of the School Director, the Heads of the three Divisions, the Head of the Biology Teaching and Learning Centre (BTLC), the School Manager, and, if need be, one or more additional members to ensure that the Executive includes a minimum of two staff from each Division. The School Executive serves as an advisory board, providing advice and making recommendations to the Director. The Executive does not have decision-making power, but assists in informing the Director on all areas of the School’s activities and provides a consultative mechanism within the School.

As shown in the chart below, the School has three Divisions: Biomedical Science and Biochemistry (BSB); Ecology and Evolution (E&E); and Plant Sciences (PS). Each Division has a Head who supervises the academic Group leaders and Divisional-level technical and administrative staff in their Division.

The BTLC coordinates all biology teaching across the campus, including contributions from the Research School of Biology, the [John Curtin School of Medical Research](#), the [Fenner School of Environment and Society](#), and the [Research School of Population Health](#).

The School Manager has overall responsibility for running the service areas, which include Administration, Information Technology and Media, Purchasing and Store, Operations, and Plant Services. The Joint Mass Spectrometry Facility and the Combined Workshop also indirectly report to the School Manager.



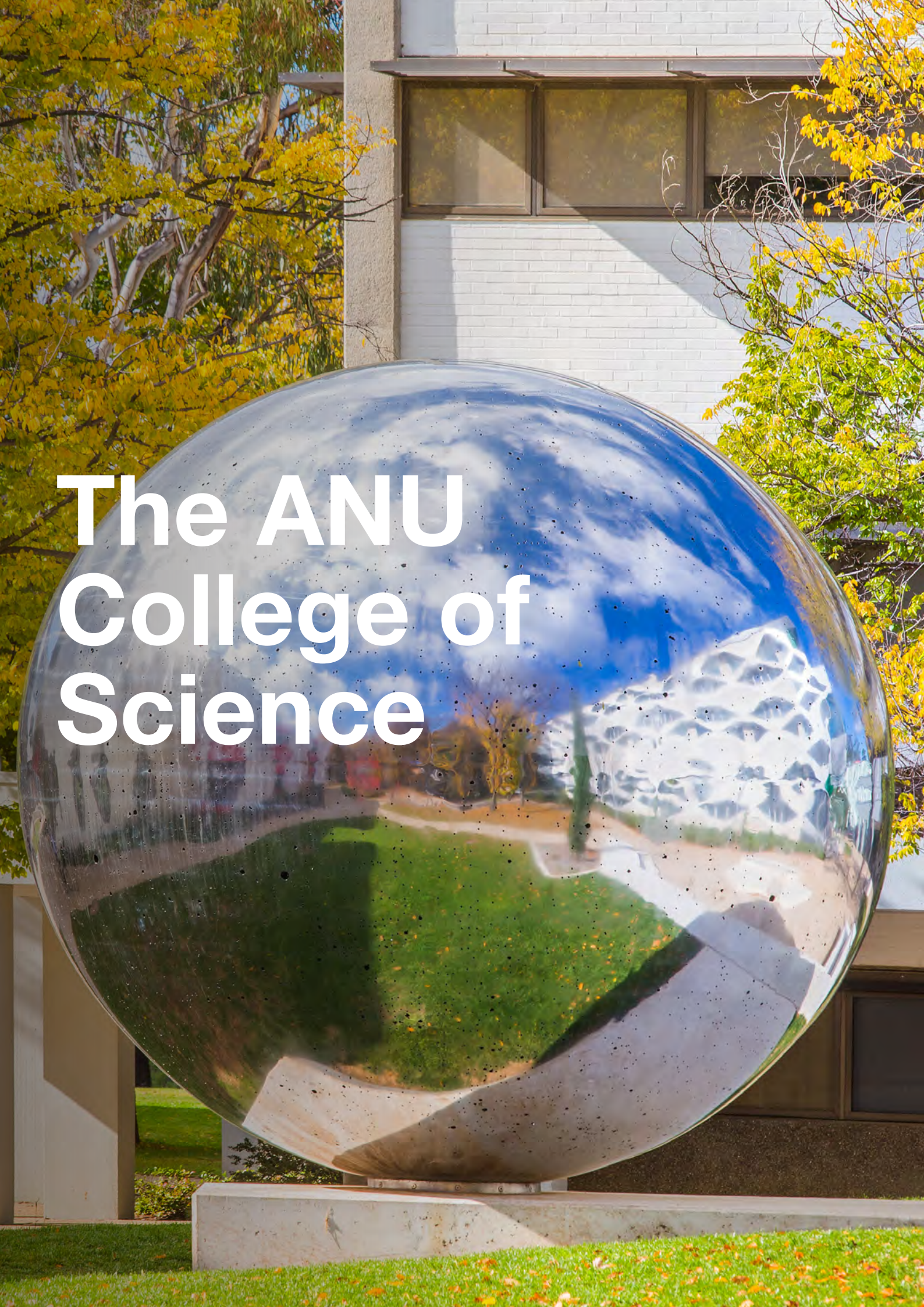
Committees

There are a number of committees and user groups that provide advice to the Director and provide input into the operation of the service teams and teaching areas, including:

- School Executive
- Education Committee
- Research Committee
- Research Training Committee
- Postgraduate Committee
- Honours Committee
- Animal User Group
- Plant User Group
- IT User Group
- Work Health and Safety Committee
- Instrument User Group
- Equity Committee







# The ANU College of Science

## The ANU College of Science

The ANU College of Science (CoS) conducts research and delivers a research-led education program that encompasses a broad range of sciences, supported by extensive international networks and by world-class facilities. The College has a strong tradition of research excellence that has fostered distinguished Nobel Laureates and Kyoto Prize winners and that trains scientific leaders in disciplines in which the ANU is consistently ranked in the top twenty in the world.

The ANU College of Science comprises the:

- Research School of Astronomy and Astrophysics
- Research School of Biology
- Research School of Chemistry
- Research School of Earth Sciences
- Fenner School of Environment and Society
- Mathematical Sciences Institute
- Research School of Physics and Engineering
- The Centre for the Public Awareness of Science.

## Partnership

The ANU College of Science takes a joint approach with the ANU College of Health and Medicine to deliver research and education through Research Schools and Centres. The Colleges are linked by joint administration and interdisciplinary programs and are known as the Joint Colleges of Science, Health and Medicine.

Read more about the structure and governance [here](#). or download a copy of the guide to [ANU Science, Health and Medicine](#).

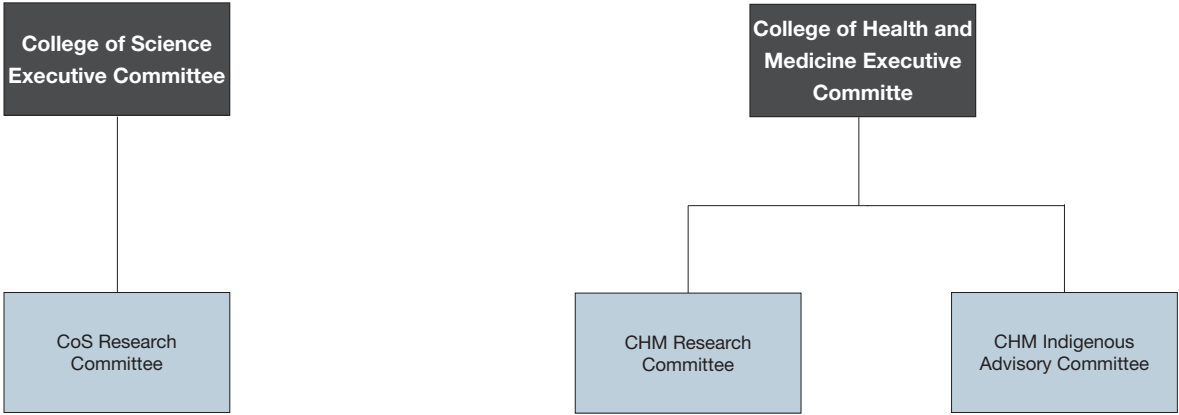




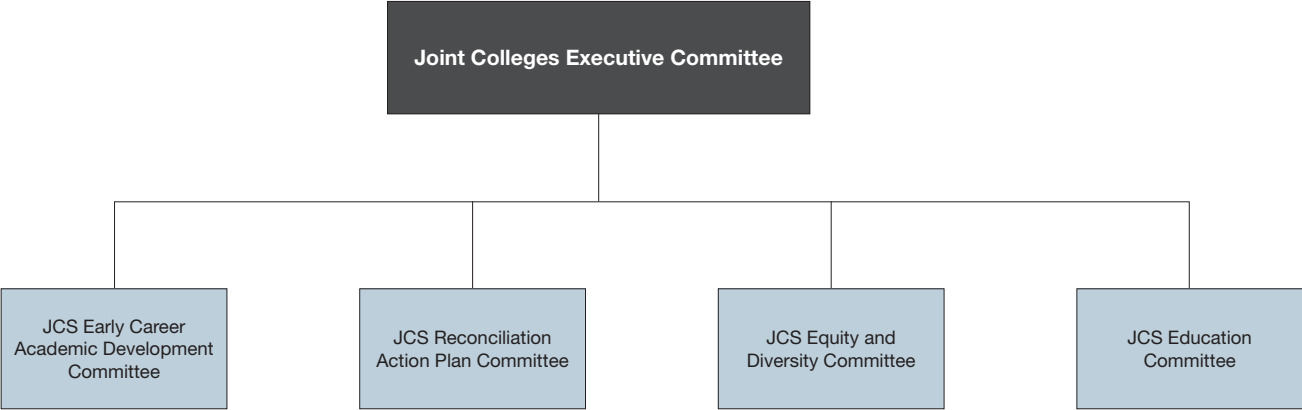
# Joint Colleges of Science Health and Medicine



## College Specific Committees



## Joint Colleges Specialist Committees







# The University

## The University

The Australian National University is one of the world's foremost research universities. Distinguished by its relentless pursuit of excellence, the University attracts leading academics and outstanding students from Australia and around the world.

### History

The University was established by the Commonwealth Parliament in 1946 specifically to lead the development of the intellectual capacity of the nation through research and research training in line with the best international standards. It is the only Australian university established by a Commonwealth Act of Parliament. In 1960, the University accepted responsibility for undergraduate education along with an expectation that the highest standards of education would be achieved.

### Scale

The University has 4,094 staff, 12,827 undergraduates and 12,534 postgraduate students. Its annual revenue exceeds \$1.0 billion and consolidated assets are worth \$2.5 billion.

### Partnerships

The University has strong links with leading research institutions in Australia and overseas. It is a founding member of the International Alliance of Research Universities, a co-operative network of 10 eminent international research-intensive universities which includes:

- > University of Cambridge
- > University of Oxford
- > University of California, Berkeley
- > Yale University
- > Peking University
- > National University of Singapore
- > University of Tokyo
- > University of Copenhagen
- > ETH Zurich

### Research-intensive education

As the specially-chartered national university, the University conducts research at the highest levels in all of its colleges, and offers a unique research-led education to undergraduate and postgraduate students as well as postdoctoral fellows.

The University advances the national intellectual and creative capacity in three key ways:

1. through broad-based research and research-intensive education in the disciplines fundamental to all knowledge: the humanities, the sciences and the social sciences,
2. by supporting research and research-intensive education in a spectrum of professional disciplines, and
3. by studying Australia in its various contexts.

It is the aim of the University to achieve its objectives by creating an inspirational working environment for all its staff, students and visitors.

In each of its endeavors, the University strives to achieve at the levels of the world's great universities.

### Location

The University campus has over 200 buildings and occupies 145 hectares adjacent to the city centre of Canberra. The University also has a number of smaller campuses:

- > Mount Stromlo Observatory (west of Canberra)
- > Siding Spring Observatory (near Coonabarabran, western New South Wales)
- > North Australia Research Unit (Darwin, Northern Territory)
- > Kioloa (coastal campus near Bawley Point, on the New South Wales South Coast)
- > ANU Medical School – The Canberra Hospital campus
- > ANU Medical School – Calvary Hospital
- > Health Facilities in South East New South Wales



Further information about ANU can be found at [anu.edu.au/about](http://anu.edu.au/about)



# University Colleges

ANU has seven academic colleges, each housing the schools and research centres that contribute to the various broad disciplines. The ANU Colleges link research and teaching at undergraduate, postgraduate and higher degree levels. They undertake world-class research and provide education programs at the highest standards.

The University recognises the need to strengthen strategic planning, align administrative support with these plans and ensure consistency of policy and procedure. The aim of the college structure is to promote and formalise cooperation among the different contributors to disciplines in ANU and to remove barriers in their path.



## ANU College of Arts & Social Sciences

The ANU College of Arts and Social Sciences (CASS) is the research and education college for the broad disciplines of the creative arts, humanities and the social sciences. The College has two research schools - the Research School of Social Sciences and the Research School of Humanities and the Arts – that cover the main disciplines to deliver leading research and degree programs.

> [cass.anu.edu.au](http://cass.anu.edu.au)

## ANU College of Asia & the Pacific

The ANU College of Asia and the Pacific (CAP) hosts the largest assembly of scholars dedicated to working on Asia and the Pacific in the English-speaking world. Organisationally the College comprises of three large Schools - the School of Culture, History and Language (CHL); the Coral Bell School of Asia Pacific Affairs; and the Crawford School of Public Policy - and two Research Centres. The Regulatory Institutions Network (RegNet) and the Australian Centre on China in the World.

> [asiapacific.anu.edu.au](http://asiapacific.anu.edu.au)

## ANU College of Science

The College consists of the Research Schools of Physics and Engineering, Earth Sciences, Chemistry, Astronomy and Astrophysics, and Biology, plus the Fenner School of Environment and Society, the Mathematical Sciences Institute, and the Australian Centre for the Public Awareness of Science. Academic staff within the ANU College of Science undertake world leading research and deliver research-led education on issues of global importance, supported by extensive international networks and world class facilities.

> [cos.anu.edu.au](http://cos.anu.edu.au)

## ANU College of Business & Economics

The ANU College of Business and Economics (CBE) seeks to advance knowledge through high quality education and research in the closely related areas of accounting, actuarial studies, econometrics, economic history, economics, finance, statistics, international business, management, marketing, and business information systems. It endeavors to do this through the provision of a range of undergraduate and graduate programs, and through its research, publications and contributions to the associated professions, commerce, industry and government.

> [cbe.anu.edu.au](http://cbe.anu.edu.au)

## ANU College of Engineering & Computer Science

The ANU College of Engineering and Computer Science (CECS) comprises of the Research Schools of Engineering and Computer Science, and the 3Ai and Cyber Institutes. It offers undergraduate degrees in engineering, information technology and computer science along with masters and doctoral postgraduate programs. The College undertakes basic and applied research in information and communications technologies, materials and manufacturing, formal methods and logic, machine learning and vision, robotics and energy systems.

> [cecs.anu.edu.au](http://cecs.anu.edu.au)

## ANU College of Law

The ANU College of Law (CoL) is Australia's national law school, committed to legal research and education at the highest level, and striving for continuous improvement in the law for the benefit of national and international communities. The ANU Law School offers LLB Hons and Juris Doctor (JD) degrees, a Graduate Diploma in Legal Practice through the School of Legal Practice, and postgraduate research and coursework degrees.

> [law.anu.edu.au](http://law.anu.edu.au)

## ANU College of Health & Medicine

The ANU College of Health and Medicine comprises of the ANU Medical School, the John Curtin School of Medical Research, the Research School of Psychology and the Research School of Population Health. These schools work together to deliver world-class research and education across the spectrum of medicine and health-related fields, working in partnership with the health sector at local, national and international levels.

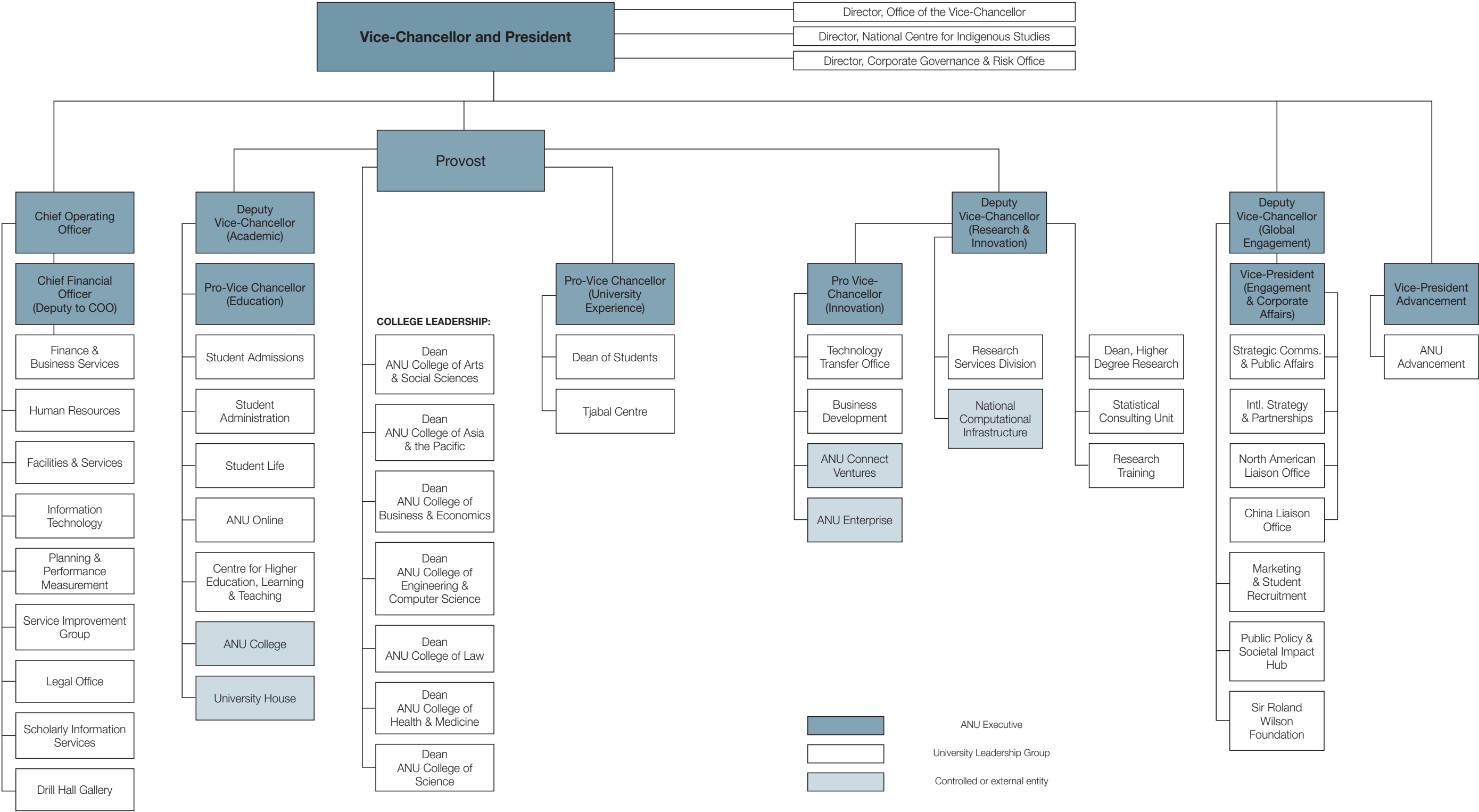
> [chm.anu.edu.au](http://chm.anu.edu.au)



Further information can be found at  
[anu.edu.au/about/academic-colleges](http://anu.edu.au/about/academic-colleges)



# ANU Executive Structure







# Our Vision & Values

## Our Vision

- > Contemporary ANU will sit among the great universities of the world, and be defined by a culture of excellence in everything that we do.
- > We will be renowned for the excellence of our research, which will be international in scope and quality, always measured against the best in the world. Our research investment will be strategic, taking a long-term view and focus on high-quality activities, high-impact infrastructure and areas of high national importance.
- > We will be renowned for the excellence of our undergraduate and graduate education: excellence in student cohort, excellence in teaching, excellence in student experience, and excellence in outcomes.
- > We will be renowned for the quality of the contribution our research and education make to societal transformation. We will identify emerging areas of need for the nation and provide research and education that will equip Australia to cope with challenges not yet imagined.
- > ANU research, education and contributions to public policy-making will change Australia and change the world. It will have impact.

## Our Values

- > We bring a distinctive excellence to our work and have the confidence to pursue original ideas.
- > We are inclusive, open and respectful, reflecting the diversity of our nation.
- > We are committed to integrity and ethical behaviour.
- > We value, enable, reward and celebrate collegiality.
- > We embrace informed risk-taking in pursuit of our objectives.
- > We are committed to better outcomes for our community, the environment, our nation and the world.
- > We are committed to the service of our nation, through original thinking and through courage in advancing our ideas.





# Innovative teaching and learning

Our graduates will have a positive influence on the future. They are passionate, creative and capable of solving critical problems not yet imagined. They create and apply knowledge to improve the lives of people, the nation and the world.

In achieving the vision of a contemporary ANU, sitting among the great universities of the world, defined by a culture of excellence (ANU Strategic Plan 2017 – 2021), the University is committed to high quality learning and teaching.

This commitment acknowledges that students are the centre of learning and teaching at ANU. A partnership between students, academics, professional staff and the University forms the foundation for excellence in learning and teaching.

The Vision for Excellence in Learning and Teaching requires commitment and leadership across the University and at all levels. The University values, enables, rewards and celebrates excellence in learning and teaching.

Four key interdependent pillars – engaged students, inspirational academics, an enriching environment, a connected community – provide a frame of reference for aligning focus and effort to continuously improve the outcomes of learning and teaching at ANU.





# Our responsibility to Indigenous Australia

As Australia's national university one of our defining roles has been to contribute to the advancement of Australia's Indigenous peoples.

We contribute by graduating Indigenous students, as well as through game-changing research and direct engagement delivering on our Unique National Responsibilities with Indigenous communities. We provide an environment for debating the big issues and partnering with Indigenous Australia to advance the status, recognition and lives of Aboriginal and Torres Strait Islander peoples.

Although the proportion of Indigenous students at ANU is high by the standards of some of our peer universities, we remain far from parity with the population at large for undergraduates. The proportion of postgraduate and higher degree students is lower again, as is the proportion of

professional and academic staff. Through targeted activities we will work towards achieving parity with the proportion of Indigenous Australians in the overall population

Research focused on Indigenous issues is broad in scope and has made a substantial contribution. ANU has strong Indigenous research leaders in a number of disciplines. However, our continued salience requires constant attention to impact, partnership with Indigenous communities and a commitment to novel and multidisciplinary approaches to our work.



# Achieving equity

ANU is committed to equity and diversity as fundamental values. Australia has a diverse population and we are committed to providing opportunities and an inclusive and welcoming environment, to those of all backgrounds and identities.

As Australia's national university, we have a responsibility and an obligation to educate students from across Australia who have the capacity to succeed, no matter their background. It is for this reason that we have launched a pioneering program to transform the way we do admissions. We are undertaking an international first to link our admission, scholarship, and accommodation processes so that when we make a student an offer to university, they will at the same time know where they will be living and whether they have a scholarship to support them. We are reserving a place for domestic students in the top 2% of every school in Australia who have the capacity to succeed, ensuring students have access to a world class education no matter the socio-economic status of their school.

Alongside this we are undertaking a major scholarship drive to remove the financial barrier for some of our most capable but most disadvantaged students, whether they be indigenous, suffering a long term disadvantage, low-SES, or from interstate regional and remote areas. We now have a single application form that allows both excelling and disadvantaged students to access more than 200 scholarship opportunities across campus by answering just four questions. And we are looking at the whole person, requiring all undergraduate applicants to have engaged beyond the classroom to support themselves, their family or their community, to clearly signal the importance of engagement beyond studies to both academic and employment success.

## Athena Swan

ANU has committed to the SAGE Pilot of Athena SWAN in Australia. Athena SWAN is an accreditation program that recognises, promotes and rewards excellence in advancing gender equity and diversity. ANU became an inaugural member of the SAGE Pilot project in 2016.

While the focus of the SAGE pilot is on science, technology, engineering, mathematics, and medicine (STEMM) disciplines, ANU is also committed to gender equity in the humanities and social science disciplines, as well as in our professional staff.





# ANU Snapshot

#1

AUSTRALIAN  
UNIVERSITY

ANU ranked first in Australia for the last four years<sup>1</sup>

118

COUNTRIES

ANU students come from 118 countries<sup>2</sup>

#2

FOR  
ACCOMMODATION

2nd largest supply of purpose built accommodation in Australia<sup>3</sup>

92%

GRADUATE  
EMPLOYMENT

92% of ANU domestic graduates were employed within four months of completing their degree<sup>4</sup>

26,558

STUDENTS

26,558 students enrolled at ANU in 2018<sup>2</sup>

High

INDIGENOUS  
STUDENT SUCCESS

One of the highest Indigenous completion rates in the sector<sup>5</sup>

Best

STAFF TO  
STUDENT RATIO

Highest number of staff per student amongst Australian public universities<sup>1</sup>

#1

FOR STAFF WITH  
A PhD

1st in Australia for proportion of academic staff with a PhD

4,000

STAFF

ANU employs more than 4,000 academic and professional staff

Top 25

STUDENT CITIES

ANU is located in one of the top 25 Best Student Cities in the world<sup>6</sup>

#1

INTERNATIONAL  
STAFF

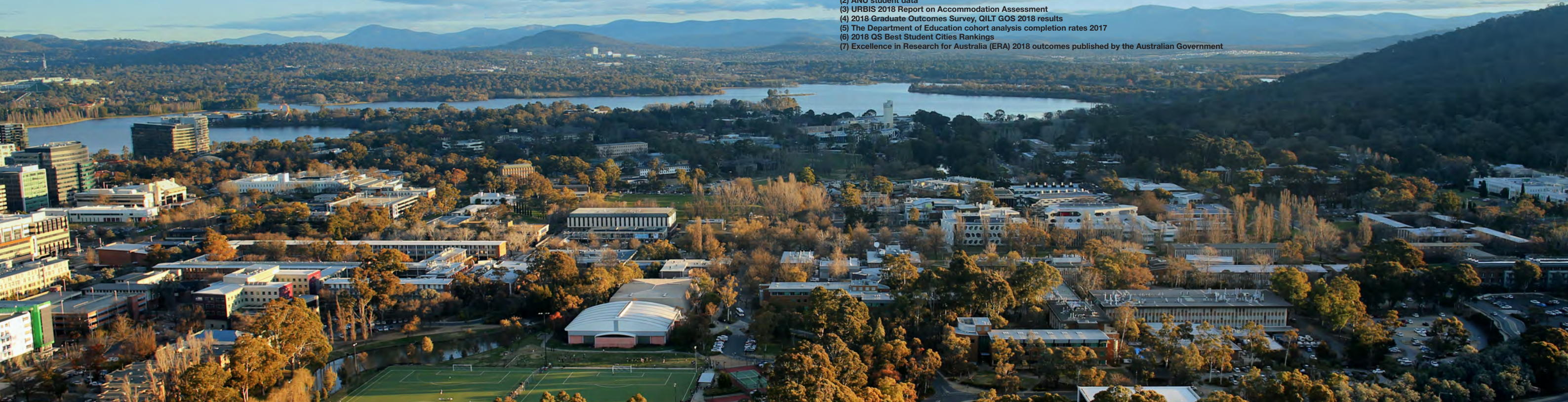
Equal first in Australia for ratio of international staff<sup>1</sup>

96%

RESEARCH “ABOVE  
WORLD STANDARD”

Largest fraction of research at the highest level in the Australian Research Council ERA exercise<sup>7</sup>

(1) Quacquarelli Symonds (QS) World University Rankings  
(2) ANU student data  
(3) URBIS 2018 Report on Accommodation Assessment  
(4) 2018 Graduate Outcomes Survey, QILT GOS 2018 results  
(5) The Department of Education cohort analysis completion rates 2017  
(6) 2018 QS Best Student Cities Rankings  
(7) Excellence in Research for Australia (ERA) 2018 outcomes published by the Australian Government







# One of the world's most liveable cities

## The power of surprise

Canberra has the power to surprise, with its abundance of food, wine, art, culture, ideas and innovation. As an evolving city, this element of surprise continues even once you've made Canberra your home, with new developments, events and opportunities constantly emerging to keep life interesting.

### About Canberra

Canberra is a planned city – designed to maximise opportunities for work and play. As our nation's capital, big ideas emerge, circulate and grow here, thanks to unique links between leading thinkers in business, government, education and research. Our dynamic economy, highly educated workforce and an innovative business culture provide career and business opportunities unique to Canberra.

Our healthy appetite for outdoor pursuits is enhanced by the natural resources available: from sailing on Lake Burley Griffin, mountain biking at the world class Mount Stromlo facility or heading up to the Snowy Mountains for a day on the slopes. We are also home to most of Australia's major national cultural institutions, with whom the University has a close relationship, and a cultural calendar overflowing with international exhibitions, arts festivals and entertainment.

### Where to Live

The architects who designed Canberra, Walter and Marion Burley Griffin, had a master plan to create a series of 'satellite cities' separated by nature reserves and connected with major roads. Today their vision lives on, with Canberra divided into seven distinct regions of residential suburbs, each serviced by a central business district.

The resulting benefits are that commuting times are short. Employment hubs are virtually on your doorstep and recreational facilities are within walking distance, regardless of where you live.

Find information on each district and the suburbs contained within them through the ['Explore Canberra' map](#).

### Education and Childcare

Canberra nurtures the pursuit of dreams from the ground up. Here families are provided with the supportive services, facilities and environments to raise happy, inspired and resilient children. Community is crucial for the support of families and Canberra has a number of ways to connect families with each other through playgroups, family events and activities.

Find out more about Canberra's excellent childcare, preschool and school system [here](#).

**Canberra has the lowest commuting times of all Australia's major cities**

**More than 25% of Canberra residents were born overseas**

**The region is known for four distinct seasons, enjoying 246 days of clear, crisp sunshine**



Further information about Canberra visit [canberra.com.au](http://canberra.com.au)



# How to apply

The appointment of the Director, Research School of Biology is being supported by Kent Vidler, Senior Recruitment Consultant, ANU Recruitment Services.

---

To submit an application for this role, please provide the following information:

1. A candidate statement which outlines both your vision for the role and an overview of your experience and skills as it relates to the parameters of the role and selection criteria.
2. A detailed CV.
3. Three referees including their email and phone contact details.  
Referees will only be contacted after prior consultation with the candidate. It is the candidate's responsibility to ensure referees are willing to provide reports when contacted.
5. An indication of the earliest date on which you could commence in the position.

Apply online: [www.anu.edu.au/jobs](http://www.anu.edu.au/jobs) Reference # 529451

---

**For a confidential discussion regarding this role and the application process, please contact:**

Kent Vidler  
Senior Recruitment Consultant, ANU  
Recruitment Services  
E: [executivesearch@anu.edu.au](mailto:executivesearch@anu.edu.au)  
T: +61 2 6125 9997

**Anticipated timeframe for the appointment process.**

Applications close: Sunday, 19 May 2019

Shortlisting: Late May 2019

Interviews: Late June 2019, in Canberra ACT

References and negotiation: Thereafter.

ANU reserves the right to appoint by invitation.

On behalf of the University and as part of the application and appointment process, candidates may be requested to provide proof of their identity and citizenship and give permission for verification of their tertiary qualifications and a police background check.