



Australian  
National  
University



# INFORMATION FOR PROSPECTIVE CANDIDATES

## ACADEMIC APPOINTMENT ROUND 2020

ANU College of  
Law

# WELCOME FROM THE DEAN



It is my pleasure to introduce The Australian National University (ANU) College of Law, the intellectual home of some of the Australia's foremost experts in international,

constitutional, public and private law.

For 60 years, ANU College of Law has built a global community whose expertise spans the globe and spectrum of legal endeavour.

Our campus is located at the heart of Canberra, the national capital. In addition to being a hub

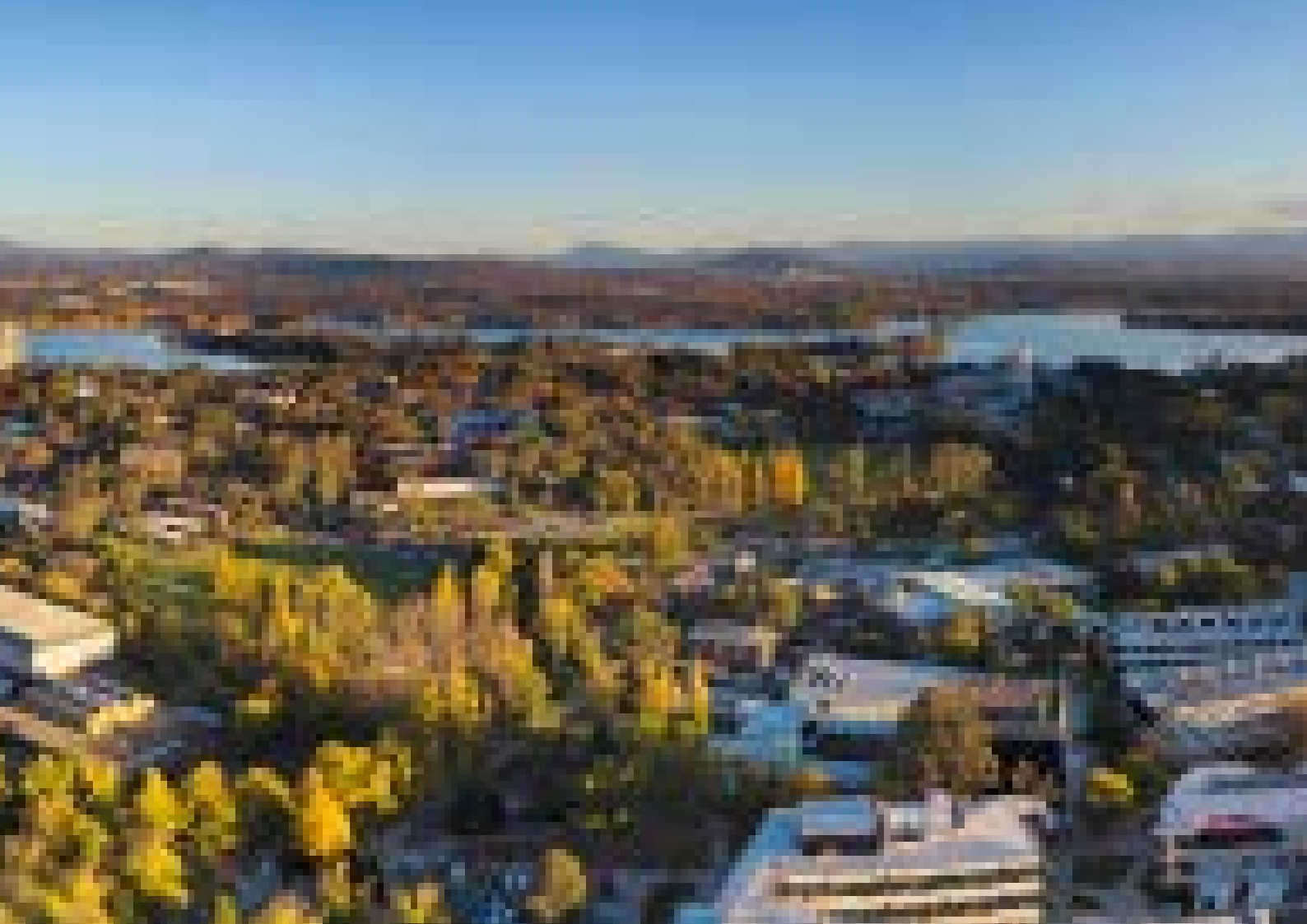
for foreign missions, the Australian Parliament and other national institutions, it is also one of the world's best student cities renowned for being safe, clean and green.

If you would like the opportunity to be extraordinary, then ANU will nurture you to achieve your potential.

I look forward to welcoming you to ANU.

**Professor Sally Wheeler OBE, MRIA, FAcSS, FAAL**

Pro-Vice Chancellor for International Strategy and Dean of ANU College of Law



# CONTENTS

By the numbers	2
About ANU College of Law	3
Education	4
Research excellence	6
Advertisement	8
Position descriptions	9
Lecturer (Academic Level B)	10
Senior Lecturer (Academic Level C)	11
How to apply	12
Canberra	13
A world-leading university	14
Employee benefits	16



Published September 2020 by ANU College of Law, The Australian National University. CRICOS Provider Number: 00120C

No undertakings are binding on the University unless they are obtained in an official letter from the Deputy Vice-Chancellor (Academic). The University may vary the ATARs, other entrance scores and requirements, content and availability of programs and courses, and costs and charges applied to the courses outlined in this guide. The University reserves the right to change the contents of courses and not to offer all courses listed in this guide.

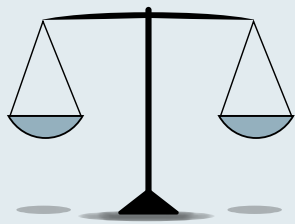
## BY THE NUMBERS

The Australian National University (ANU) is one of the world's leading centres for research and education. Our global reputation and rankings allow us to attract the best staff and students from around the world.



**One of the highest academic staff-to-student ratios**

*(Good Universities Guide 2019)*



**Ranked in the top 20 in the world for law**

*(QS World Rankings by Subject 2020/21)*



**Ranked 1st in Australia and 29th in the world**

*(QS World University Rankings 2020)*



**Five-star maximum rating for student demand, student retention, student-teacher ratio and staff qualifications**

*(Good Universities Guide 2019)*



**Five-star max rating for law and legal studies research**

*(2019 Excellence in Research for Australia (ERA) rankings)*



**One of the top ranked universities in Australia for international outlook**

*(2019 Times Higher Education International Outlook indicator)*

**ANU counts six Nobel Laureates among our staff and alumni (including our Vice-Chancellor)**

# ABOUT ANU COLLEGE OF LAW

Since 1960, ANU College of Law has stood as a leader in legal research, addressing contemporary legal, social and political challenges in Australia and around the world. Balancing global outlook with local focus, we have a long-standing reputation for excellence in legal education, research and community outreach.

This, coupled with our role as the national university, means we have a responsibility to be ambitious, bold and transformative in our research and teaching. Our campus is located at the heart of the national capital, alongside foreign missions, the Australian Parliament, other national institutions, research organisations and government departments.

Across undergraduate, postgraduate and research degrees, we provide our students with a unique understanding of current law and policy.

As Australia's national law school, we provide national research leadership on the most important legal, regulatory and governance challenges facing Australia, the Asia-Pacific region and the world. ANU leads the nation in research excellence, confirming our reputation as a world-class university for law and legal research by receiving the highest possible ranking in the 2018 Excellence in Research for Australia (ERA). ANU legal scholars have received a five-star rating in all four

rounds of the ERA since it began in 2010. The ERA results recognise the University's continuing tradition of global excellence in legal research.

Our capital city location links us with the nation's key law-making and legislative bodies. Our researchers work closely with government departments, research agencies, NFPs/NGOs, other universities and the wider legal community to support and enhance legal education, research and policy in Australia and around the world.





# EDUCATION

Bringing together extensive experience and real-world insight, our teachers are experts both in their legal disciplines and in legal education. Our scholars are engaging regularly with government and the profession, producing world-class scholarships and making important contributions to the development of the law and public policy.

## Degrees

- Bachelor of Laws (Honours)
- Juris Doctor
- Master of Laws
- Master of International Law and Diplomacy
- Graduate Certificate of Law
- Graduate Certificate in Law and Technology
- Higher Degree Research

## Alumni

With over 21,000 ANU Law graduates across Australia and around the world, our alumni can be found working not only as lawyers, but agents for social change, public policy and global diplomacy.

## Teaching facilities

We have recently finished refurbishing our facilities to provide modern teaching and learning spaces to educate the next generation of lawyers.

Features:

- State-of-the-art teaching spaces
- Social and collaborative student spaces
- New and modern moot court





## Research-led education

A number of ANU courses adopt a research-led curriculum whereby subject content is based on the specialist research interests of the teaching staff. For example, in 2019 Associate Professor Jolyon Ford supervised more than 30 students in a collaborative research project led by Australian human rights organisation Walk Free (London); corporate environmental, social and governance data platform WikiRate (Berlin); the independent non-profit Business and Human Rights Resource Centre (BHRRC) (London); and the ANU College of Law. As part of this project, the students contributed to a landmark global report examining patterns of corporate reporting on the risks of modern slavery supply chains. The report was the first in a series of sector specific studies, giving students valuable experience in mandatory reporting and disclosure compliance while at the same time tackling a global challenge.

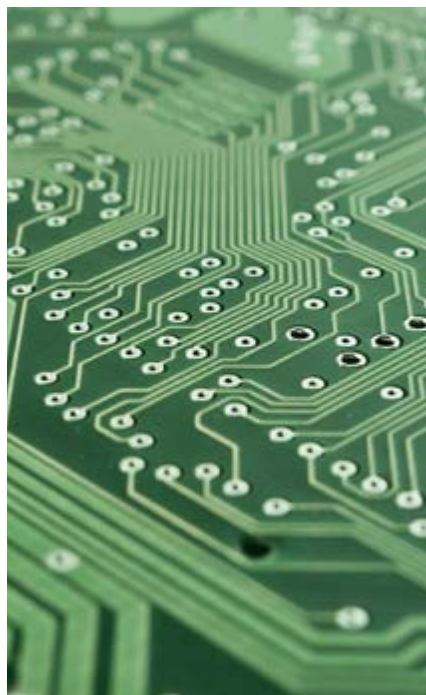


# RESEARCH EXCELLENCE

Recognised around the world, our research has long been known for scholarly excellence and positive impact. Since our beginning, we have attracted academics, researchers and practitioners from across Australia and abroad. Together, these scholars have engaged with governments, communities and the wider legal profession to produce world-class research, and make important contributions to the development of the law and public policy.

## Law and technology

In 2019, ANU became the first university in the country to secure US\$1million in funding from US-based cryptocurrency exchange platform Ripple, as part of its US\$50m University Blockchain Research Initiative. The funding provides for research and education on the legal implications for the profession and governments from the emerging technologies of blockchain, smart contracts, and digital payments.



## The Ideal Judge— a pioneer project on judicial swearing in ceremonies

In 2018, ANU Law scholar Associate Professor Heather Roberts (BA (AsianStudies) (Hons) '00, LLB (Hons) '00, GDLP '00, PhD '08) received a three-year Discovery Early Career Researcher Award (DECRA) from the Australian Research Council for her project 'The Ideal Judge'. The research project is the first of its kind worldwide, using ceremonies drawn from across Australia's Supreme Courts from 1901 to the present day to explore changing expectations of judges and judging.



## Unpicking global populism

In partnership with legal scholars from the University of Indiana Bloomington and the University of Maryland, ANU College of Law researchers analysed the backlash against global norms through a series of international workshops in 2019. The project explored the challenges posed to the rules-based legal order by populist groundswells in a growing number of countries around the world including Brazil, Hungary, Italy, the Philippines and the United States.





## Fresh horizons on the Law of the Sea

The South China Sea has emerged in recent years as a flashpoint for territorial sovereignty and maritime rights, posing new challenges to Southeast Asian neighbours. In 2019, ANU College of Law scholars Professor Donald Rothwell FAAL and Associate Professor David Letts AM, CSM presented the big picture of the impact, influence and ongoing role of the United Nations



## International partnerships and global engagement

Our research is enriched by our partnerships with universities, governments and businesses across the Asia-Pacific region. We are a proud founding member of the National Law Schools Network that also comprises the National University of Singapore, Peking University and the University of Tokyo, all members of the International Association of Research Universities (IARU) alliance. The National Law Schools Network aims to strengthen relations with partners in our region, and to share insights and ideas on shared challenges of national law schools.



# ADVERTISEMENT

## Classification

Academic Levels B to C

## Salary package

\$99,809 – \$133,202 plus 17% superannuation

## Terms

Full time, continuing

## Position overview

The ANU Law School currently have two vacancies commencing for the 2021 academic year and invites applications from forward-thinking academics who are ready to thrive in one of the world's best law schools.

For the first position the ANU Law School are seeking applications from candidates with the capability to teach into Corporations Law.

For the second position the ANU Law School is interested in all areas of legal research and legal education, however it has particular teaching needs in Contract Law, Commercial Law and Criminal Law. There is limited need for academic staff with a primary focus on teaching Constitutional Law, Human Rights, International Law, Legal Theory or Public Law.

As an academic in the ANU Law School you will ensure our students and scholars are not just equipped to respond to the challenges of today, but are ready to capture the opportunities of tomorrow. You will be dedicated to legal education and research at the highest level, and strive towards continuous improvement in the law for the benefit of national and international communities.



You will also share the commitment the College places on supporting staff to reach their full potential in an environment of collegiality and respect for diversity.

The ANU College of Law is recognised as one of Australia's leaders in legal research and education. Located in Australia's capital city, Canberra, the ANU College of Law is home to five research centres, a law reform and social justice initiative, and has built strong networks with lawmakers, the judiciary and legal academics throughout Australia and the world.

Successful applicants must be available to commence teaching on or around 1 February 2021 in line with the ANU academic year.

For all enquiries please contact Professor Sally Wheeler, Dean, ANU College of Law, T +61 2 6125 4070  
E [Sally.Wheeler@anu.edu.au](mailto:Sally.Wheeler@anu.edu.au)

The University actively encourages applications from Aboriginal and Torres Strait Islander people. For more information on employment opportunities at the ANU, visit <https://services.anu.edu.au/human-resources/respect-inclusion/aboriginal-torres-strait-islander-employment>

ANU values diversity and inclusion and believes employment opportunities must not be limited by socio-economic background, race, religion or gender. For more information about staff equity at ANU, visit <http://hr.anu.edu.au/staff-equity>

## Application information

In order to apply for this role please make sure that you upload the following documents:

- A statement addressing the selection criteria.
- A current curriculum vitae (CV) which includes details of education, professional training and qualifications, full list of publications, positions held (including relevant dates, titles, responsibilities and key achievements), details of teaching and/or research experience, and any other relevant information such as contributions to professional associations and learned societies, and community activities.

Applications which do not address the selection criteria may not be considered for the position.



A group of five students are sitting on a grassy lawn under large, leafy trees. They are engaged in conversation. The scene is bright and sunny, with sunlight filtering through the leaves. The students are dressed in casual clothing. A red backpack is on the ground to the left, and a grey backpack is on the ground to the right.

## POSITION DESCRIPTIONS



# POSITION DESCRIPTION

## Lecturer (Academic Level B)

<b>College/Division:</b>	ANU College of Law
<b>Faculty/School/Centre:</b>	ANU Law School
<b>Position title:</b>	Lecturer
<b>Classification:</b>	Academic Level B
<b>Responsible to:</b>	Head of School

- A range of administrative functions the majority of which are connected with the courses in which the academic teaches.
- Attendance at School and/or College meetings and/or membership of a number of committees.
- Engagement in outreach activity in line with the interests of the College.
- Compliance with all ANU policies and procedures, including those relating to work health and safety and equal opportunity.
- Other duties as allocated by the supervisor consistent with the classification of the position.

### Purpose statement

The core purpose of all the positions on academic staff is to make a contribution to advancing the discipline of law by (a) exploring the boundaries of legal knowledge through research, scholarship, and the dissemination of scholarship (b) educating future lawyers and associated professionals to be competent, ethical, and act in the service of society (c) sharing and spreading the benefit of legal knowledge and skills amongst wider audiences by engaging in appropriate outreach activities, and (d) infusing all of these activities with an interest in underlying questions of law reform and/or social justice.

### Position dimension and relationships

The Lecturer is a member of the ANU Law School and is expected to work collegially with both academic and professional staff in the College to contribute towards the achievement of teaching, research and engagement and impact outcomes in accordance with the strategic goals of the College and ANU more broadly.

### Role statement

Specific duties required of a Level B Teaching and Research Academic may include:

- The preparation and delivery of tutorials, lectures, practical classes, demonstrations, workshops, seminars, student field excursions and clinical sessions.
- Acting as a course convenor.
- Supervision of honours and postgraduate students engaged in course work, including supervision of research projects. Supervision of research projects undertaken by these cohorts of students.
- The conduct and publication of high quality research.
- Involvement in academic professional associations, conferences and events.
- Initiation and development of course material with appropriate advice from and support of more senior staff.
- Marking and assessment.
- Consultation with students.

### Skill base

A Level B Academic shall have qualifications and/or experience recognised by the institution as appropriate for the relevant discipline area including an ability and willingness to teach Corporations Law, Contract Law, Commercial Law and Criminal Law. An interest in or experience of Clinical Legal Education would be an advantage.

A position at this level will require a doctoral qualification.

### Selection criteria

- LLB with honours (or equivalent) and a completed (submitted) PhD in law or a cognate discipline.
- Demonstrated achievement in high quality research and scholarship in areas that align with the Colleges existing research strengths, and a demonstrated capacity for obtaining research grants from the ARC or other appropriate funder.
- Demonstrated ability to publish research findings in high quality publication outlets.
- Awareness of the impact of research agenda as currently defined by the ARC.
- Demonstrated interest ability to deliver effective teaching including experience of or a willingness to teach at undergraduate and postgraduate level in one or more of Corporations Law, Contract Law, Commercial Law and Criminal Law. A demonstrated interest in curriculum development is also required.
- Ability to undertake outreach activities in line with the interests of the College.
- Good oral and written communication skills and an ability to maintain positive working relationships with students and colleagues at all levels.
- Understanding of equal opportunity principles and commitment to their application in a university context.

**References:** Academic Minimum Standards

# POSITION DESCRIPTION

## Senior Lecturer (Academic Level C)

<b>College/Division:</b>	ANU College of Law
<b>Faculty/School/Centre:</b>	ANU Law School
<b>Position title:</b>	Senior Lecturer
<b>Classification:</b>	Level C
<b>Responsible to:</b>	Head of School

- Attendance at departmental and/or faculty meetings and a major role in planning or committee work.
- Engagement in outreach activities in line with the interests of the College.
- Compliance with all ANU policies and procedures, including those relating to work health and safety and equal opportunity.
- Other duties as allocated by the supervisor or the Vice-Chancellor consistent with the classification of the position.

### Purpose statement

The core purpose of all the positions on academic staff is to make a contribution to advancing the discipline of law by (a) exploring the boundaries of legal knowledge through research, scholarship, and the dissemination of scholarship (b) educating future lawyers and associated professionals to be competent, ethical, and act in the service of society (c) sharing and spreading the benefit of legal knowledge and skills amongst wider audiences by engaging in appropriate outreach activities, and (d) infusing all of these activities with an interest in underlying questions of law reform and/or social justice.

### Position dimension and relationships

The Senior Lecturer is a member of the ANU Law School and is expected to work collegially with both academic and professional staff in the College and the University to contribute towards the achievement of teaching, research and engagement and impact outcomes in accordance with the strategic goals of the College and ANU more broadly.

### Role statement

Specific duties required of a Level C Teaching and Research Academic may include:

- The preparation and delivery of tutorials, lectures, practical classes, demonstrations, workshops, seminars, student field excursions and clinical sessions.
- Course coordination including the initiation and development of course material.
- Supervision of major honours or postgraduate research projects including the supervision of the program of study of honours students and of postgraduate students engaged in course work.
- The publication of high quality research at an international level and the pursuit of funding to support research.
- Significant involvement with the development of the discipline at a national or international level through contributions to academic associations, conferences and events.
- Consultation with students.
- Broad administrative functions.
- Marking and assessment.

### Skill base

A Level C Academic will have advanced qualifications and/or recognised by the institution as appropriate for the relevant discipline area including an ability and willingness to teach Corporations Law, Contract Law, Commercial Law and Criminal Law. An interest in or experience of Clinical Legal Education would be an advantage.

A position at this level will require a doctoral qualification.

### Selection criteria

- LLB with honours (or equivalent) and a PhD in law or a cognate discipline.
- Demonstrated achievement in high quality research and scholarship in areas that align with the Colleges existing research strengths, and a demonstrated capacity for obtaining research grants from the ARC or other appropriate funder.
- Awareness of and a willingness to pursue the impact of research agenda as currently defined by the ARC.
- Demonstrated record of achievement (a publication record) in publishing research with high quality publishers or in high quality publication outlets.
- Demonstrated achievement in effective teaching (including online) including experience of or a willingness to teach at undergraduate and postgraduate level one or more of Corporations Law, Commercial Law, Contract Law and Criminal Law. An interest in curriculum design and development at higher education level is also required.
- Demonstrated achievement or experience in outreach activities that align with the interests of the College.
- Demonstrated achievement or experience in university administration and governance.
- Well-developed oral and written communication skills and a demonstrated ability to maintain positive working relationships with students and colleagues at all levels.
- Understanding of equal opportunity principles and commitment to their application in a university context.
- Evidence of engagement in continuous professional development.

**References:** Academic Minimum Standards

# HOW TO APPLY

## Application information

In order to apply for this role, please make sure that you upload the following documents via ANU Recruit [jobs.anu.edu.au](https://jobs.anu.edu.au)

### A statement addressing the selection criteria

- Respond to each of the selection criteria, taking into account experience, past roles and expertise.

### A current Curriculum Vitae (CV)

- Details of education, professional training and qualifications.
- Full list of publications.
- Positions held, including relevant dates, titles, responsibilities and key achievements.
- Details of teaching and/or research experience.
- Any other relevant information such as contributions to professional associates and learned societies, and community activities.

## Selection process

Shortlisted candidates will be asked to provide two written references in support of their application prior to the interview. It is the candidates' responsibility to ensure referees provide a report that can be considered.

Shortlisted candidates will also be required to submit a video presentation on a topic, which will be provided upon notification of being shortlisted.

Candidates will be provided with a deadline to provide the above information which will fall prior to the interview.

Interviews will be held via Zoom for all shortlisted candidates.

## Anticipated timelines

### Advertising commences

Wednesday 9 September 2020

### Applications close

Friday 2 October 2020

### Shortlisting of candidates

Early October 2020

### Shortlisted candidates notified and asked to provide references and submit video presentation

Early October 2020

### Shortlisted candidates interviewed

Late October 2020

### Successful candidates notified

Early November 2020

### Commencement of successful candidate

On or around 1 February 2021



## Enquiries

Professor Sally Wheeler,  
OBE, MRIA, FAcSS, FAAL  
Dean, ANU College of Law

T +61 2 6125 4070

E [sally.wheeler@anu.edu.au](mailto:sally.wheeler@anu.edu.au)

APPLICATIONS CLOSE  
**FRIDAY 2**  
**OCTOBER 2020**



# CANBERRA

## The capital advantage

At ANU, you'll be warmly welcomed into a safe, inclusive and collaborative environment that facilitates immersion and offers a strong sense of togetherness and community spirit.

Our proximity to the High Court of Australia, Parliament House, Commonwealth courts and federal agencies offers unparalleled access to legal practitioners, members of the judiciary and government policymakers, many of whom are ANU Law alumni.

Canberra offers a different cultural experience to other Australian cities and is incredibly easy to get around—the city has the shortest commute times of any major Australian city and a newly opened light-rail network.



### Most liveable city

Canberra is consistently named as one of the most liveable cities in the world. Its residents enjoy the highest quality of life in the world (2019 Numbeo Quality of Life Index).



### Safest

Canberra is considered one of the safest cities in Australia with one of the lowest crime rates.



### Global community

A city of just over 411,000 people with more than 27 per cent of our residents born overseas, Canberra is a multicultural city with a strong sense of community.



# A WORLD-LEADING UNIVERSITY

ANU is one of the world's foremost research universities.

**Distinguished by our relentless pursuit of excellence, the University attracts leading academics and outstanding students from Australia and around the world.**

Further information about ANU can be found at:  
[anu.edu.au/about](http://anu.edu.au/about)

## History

The University was established by the Commonwealth Parliament in 1946 specifically to lead the development of the intellectual capacity of the nation through research and research training in line with the best international standards. It is the only Australian university established by a Commonwealth Act of Parliament. In 1960, the University accepted responsibility for undergraduate education along with an expectation that the highest standards of education would be achieved.

## Scale

The University has 4,300 staff, 10,286 undergraduates and 6,925 postgraduate students. Its annual revenue exceeds \$1 billion and consolidated assets are worth \$2.5 billion.

## Partnerships

The University has strong links with leading research institutions in Australia and overseas. It is a founding member of the International Alliance of Research Universities, a co-operative network of 10 eminent international research-intensive universities which includes:

- University of Cambridge
- University of Oxford
- University of California, Berkeley
- Yale University
- Peking University
- National University of Singapore
- University of Tokyo
- University of Copenhagen
- ETH Zurich



## Research-intensive education

As the specially-chartered national university, ANU conducts research at the highest levels in all of its colleges, and offers a unique research-led education to undergraduate and postgraduate students as well as postdoctoral fellows.

The University advances the national intellectual and creative capacity in three key ways:

1. Through broad-based research and research-intensive education in the disciplines fundamental to all knowledge: the humanities, the sciences and the social sciences.
2. By supporting research and research-intensive education in a spectrum of professional disciplines.
3. By studying Australia in its various contexts.

It is the aim of the University to achieve its objectives by creating an inspirational working environment for all its staff, students and visitors.

In each of its endeavours, the University strives to achieve at the levels of the world's great universities.

## Location

The University's Acton campus has over 200 buildings and occupies 145 hectares adjacent to the city centre of Canberra. The University also has a number of smaller campuses:

- Mount Stromlo Observatory (west of Canberra)
- Siding Spring Observatory (near Coonabarabran, western New South Wales)
- North Australia Research Unit (Darwin, Northern Territory)
- Kioloa (coastal campus near Bawley Point, on the New South Wales South Coast)
- ANU Medical School—The Canberra Hospital campus
- ANU Medical School—Calvary Hospital
- Health Facilities in South East New South Wales.



# EMPLOYEE BENEFITS

ANU provides a number of employee benefits for eligible employees.

**Below is a brief summary of the benefits the ANU provides for eligible employees, which begin from the commencement of their appointment.**

## Family-friendly workplace

- Generous parental leave provisions—up to 26 weeks at full pay plus 6 weeks of career re-entry leave.
- On-campus childcare with the option to deduct payment from pre-tax salary.
- Flexible working arrangements.
- Breastfeeding facilities.
- Dual career (spousal) hires.



## Career and professional development

- In-house and external staff development opportunities, including individual coaching program.
- Support for caring responsibility to attend conference/seminar.
- Outside studies program.
- Support for individual career planning/counselling services.
- Staff undergraduate and postgraduate scholarships. Career development leave program.
- Informal and formal mentoring.

## Salary packaging

- Novated (car) leases.
- Airline membership—Qantas and Virgin Australia.
- Laptops, PDAs.
- Parking—eligible staff are able to apply for permits for on-campus parking.
- Superannuation.

## Health and wellbeing

- On-campus staff counselling service.
- Independent and confidential employee assistance program.
- On-campus fully credited primary health care facility—free flu vaccination.
- ANU Fitness Centre—gym and group fitness classes.
- Wellbeing programs for staff e.g. women and men's health checks.
- Dedicated work environment group to support staff with work, health and safety matters.



**For additional information, please contact:**

**ANU College of Law  
Human Resources  
E [hr.law@anu.edu.au](mailto:hr.law@anu.edu.au)**

## Campus life and facilities

- Cafes, banks, ATMs, chemist, newsagent, bookshop and a post office.
- ANU is a smoke-free campus.
- Access to University libraries—5 in total.
- ANU GreenShare car service.
- Campus bicycle fleet and a network of walking and bike paths around campus.
- ANU Green Unit to help reduce our carbon footprint.
- Corporate discount for rental cars.
- Vehicle servicing and maintenance with Autoco Belconnen—free pick-up and drop-off from the ANU.
- Well-established and maintained precincts for acoustic and other events e.g. University House, Llewellyn Hall.
- Well-maintained gardens and sporting/recreation facilities.

## Salary and rewards

- Contribution of up to 17% superannuation (in addition to base salary).
- On-campus Unisuper consultant available for general advice on superannuation.
- ANU staff health insurance plan with HCF for Australian resident and non-resident staff.
- Recognition of Prior Service with another Australian university or Commonwealth authority.

## Learning communities

Student-led organisations inclusive and open to everyone. These communities encompass areas such as:

- creative arts
- cultures
- global challenges
- history
- sustainability.

# CONTACT US

## **ANU College of Law**

The Australian National University  
Canberra ACT 2600 Australia  
W [law.anu.edu.au](http://law.anu.edu.au)

## **ANU Law social media**

[facebook.com/ANUCollegeofLaw](https://facebook.com/ANUCollegeofLaw)  
[instagram.com/ ANUCollegeofLaw](https://instagram.com/ANUCollegeofLaw)  
[youtube.com/ANUCollegeofLaw](https://youtube.com/ANUCollegeofLaw)  
[twitter.com/ANU\\_Law](https://twitter.com/ANU_Law)

CRICOS Provider #00120C