



Charles Sturt  
University

## Position Description



## Lecturer in Biochemistry

### School of Biomedical Sciences

### Faculty of Science

Classification	Level B
Delegation Band	Delegations and Authorisations Policy (see Section 3)
Nature of Employment	Continuing
Workplace Agreement	Charles Sturt University Enterprise Agreement
Date Last Reviewed	April 2021

### Faculty of Science

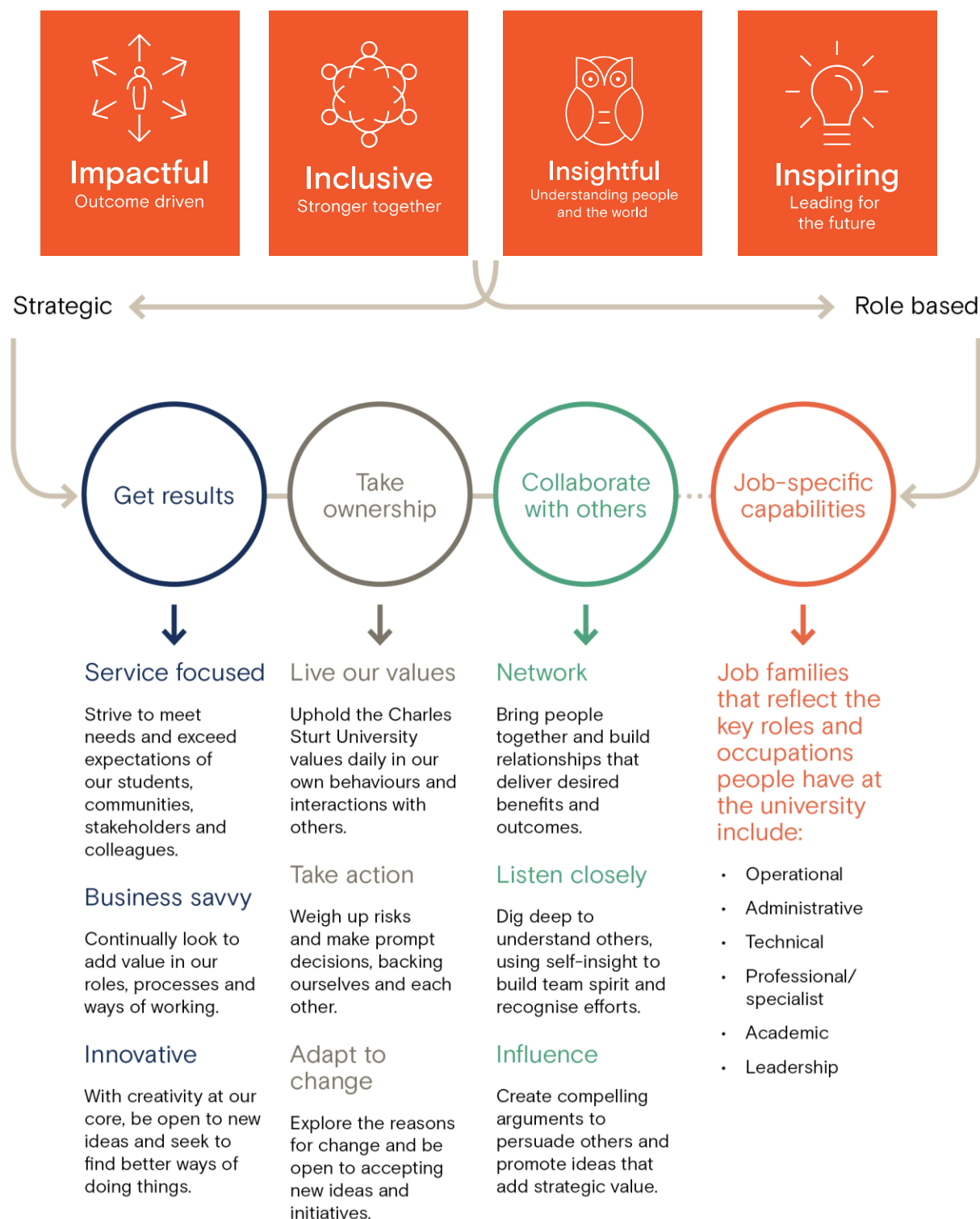
### School of Biomedical Sciences

The Faculty of Science has more than 9000 students and over 500 staff dedicated to advancing scientific knowledge. It delivers flexible, innovative teaching program designed to produce job-ready graduates for the professions. A leader in strategic and applied research in a wide array of sciences, it enhances and extends knowledge, trains and educates future researchers and provides scientific solutions to current challenges. The staff and students in the Faculty achieve this through ethical practice, professional collaborations, Industry involvement and a commitment to continual improvement.

The School of Biomedical Sciences is a well-established, multi-campus, academic unit that offers undergraduate and postgraduate courses both onshore and offshore in paramedicine, pharmacy, medical laboratory science, food and nutrition, health and medical science, and health management and leadership. The School is committed to enhancing its reputation as a high performing multidisciplinary school by having academics focused on providing quality education and being actively involved in a variety of medical, biotechnology and health based research programs that complement these courses.

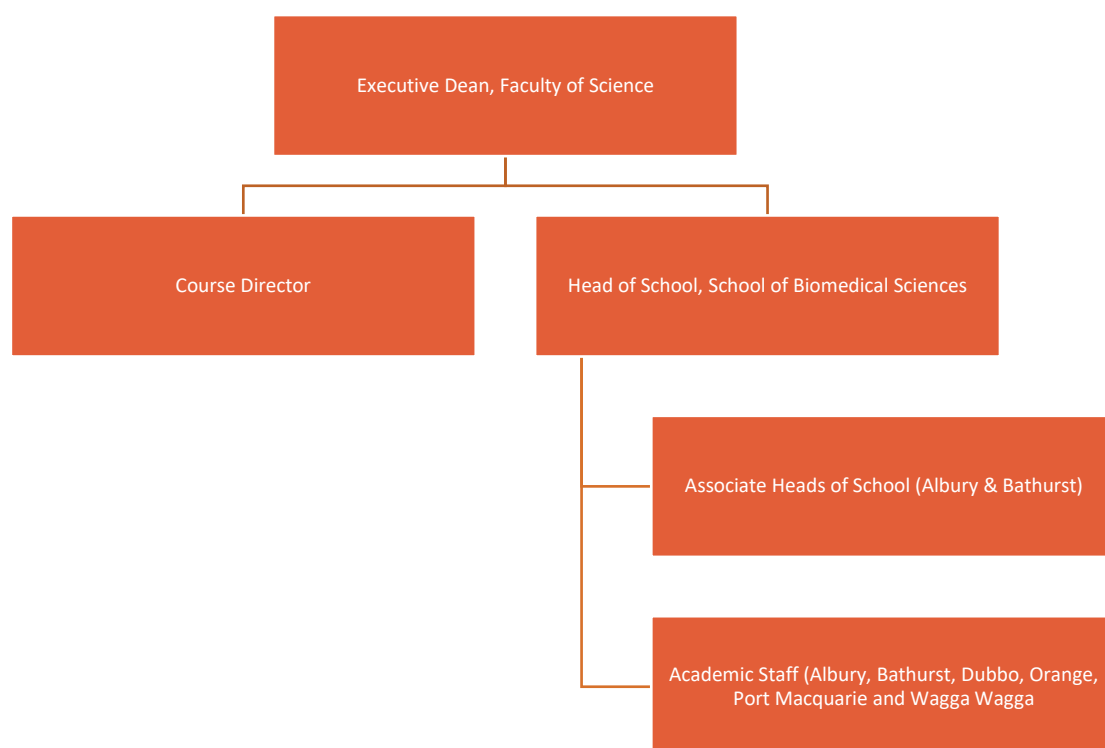


## Our University Values





## Organisational Chart



## Reporting relationship

**This position reports to:** Head of School, School of Biomedical Sciences

**This position supervises:** Nil



## Position overview

Utilising blended models of subject delivery at undergraduate and postgraduate levels the Lecturer in Biochemistry will undertake academic teaching in an area of expertise within the School

A key aspect to this role includes establishing and progressing an active research profile aligned to the strategic direction of the School of Biomedical Sciences.

Participation in the administration and ongoing curriculum development of courses offered by the School of Biomedical Sciences will also be expected.

## Principal responsibilities

- Apply CSU learning and teaching methodologies, processes, technologies and tools to deliver high quality student centred learning opportunities in the relevant discipline and as required to meet the teaching needs of the University. Achieve excellence in teaching in a range of delivery modes, which may include face to face and online teaching and assessment.
- Supervise Research Higher Degree students.
- Build strong professional relationships with students and provide timely and appropriate consultation and feedback.
- Actively contribute to collaborative processes to design, deliver and continually improve high quality courses and learning experiences for students including the giving and receiving of constructive feedback.
- Actively contribute to high performing multi disciplinary teams with an outcome focus and the development of a respectful, trusting and collaborative working environment.
- Provide leadership and management, as appropriate, in the convening, coordination and delivery of subjects and/or courses. This may include coordinating and/or leading other staff including casual academic staff.
- Proactively develop and foster relationships with a range of stakeholders including community, government departments, and professional bodies.
- Maintain a sound and current knowledge and understanding of the relevant discipline through industry engagement and/or scholarly activities or similar.
- Conduct ethical, high quality research and contribute to knowledge through scholarship, publication and presentation and execute a research plan that aligns with CSU's Research Plan and objectives including pursuing funding opportunities.
- Identify and create opportunities for collaborative research projects with internal and external researchers and stakeholders.
- Continue to build a record of research/creative work which contributes to the development of the discipline whilst maintaining up-to-date research records within CSU's research database.
- Provide leadership and foster partnerships with the professions that bring direct benefit to the strategic work of the University, in terms of teaching, workplace learning, course profile and/or areas of research strength.



- Contribute to the development and improvement of policy and practice through involvement in professional/industry associations, accreditation authorities, conference organisations, advisory bodies, and national or international delegations, consistent with the University's Outside Professional Activities Policy.
- Develop, lead and/or evaluate continuing professional education and maintain professional accreditation.
- Participate in external professional reviews.
- Engage in professional practice in a discipline or field for the purposes of improving/transforming professional practice and feeding back into teaching and/or practice across the professions OR which demonstrates the maintenance or development of significant advanced practice skills or improves/transforms practices within the profession and which informs teaching. These activities could be achieved through scholarship, publication or presentation.
- Engage in professional activities linked to knowledge development and problem solving such as research with, for and about the profession and about professional practice; projects related to critical evaluation and enhancement of practice; collaborations with research colleagues and professions/industries/businesses; authorship/editorship.
- Undertake larger projects that enhance curricula and that are of particular benefit to the School or discipline, or projects that investigate practice and university teaching/curricula.
- Actively contribute to the governance, marketing and promotion, and administrative activities to facilitate the work of the Faculty/School.
- Other duties appropriate to the classification as required

## Physical capabilities

The incumbent may be required to perform the following.

- Work in other environments beyond the school, such as other campuses, as well as possible car and air travel and work with a diverse range of staff, students and community members.
- On occasion drive a university vehicle distances up to 500km per day within the terms of the university's [Driving Hours Guidelines and Policy](#).
- Perform in an accurate and timely manner push/pull, reaching, grasping, fine manipulation tasks, including lifting items up to 10kg.
- Possess the physical ability to carry out shelving duties, such as frequent bending, reaching/stretching, squatting and repetitive lifting.



## Selection criteria

Applicants are expected to address the selection criteria when applying for this position.

### Essential

- A. A doctoral or masters qualification in Biochemistry or closely related field or equivalent accreditation and standing.
- B. A record of research/creative works or professional activity in Biochemistry or a related field, which demonstrates a capacity to make an autonomous contribution.
- C. Evidence of the delivery of high-quality student-centred learning and teaching.
- D. Demonstrated capacity to work both collaboratively and independently in a large complex academic setting with an outcome focus.
- E. Demonstrated commitment to applying culturally respectful, inclusive and safe practices in the workplace.



