



THE UNIVERSITY OF
MELBOURNE

Melbourne
Children's

A world leader
in child and
adolescent health



The Royal
Children's
Hospital
Melbourne



murdoch
children's
research
institute



THE UNIVERSITY OF
MELBOURNE

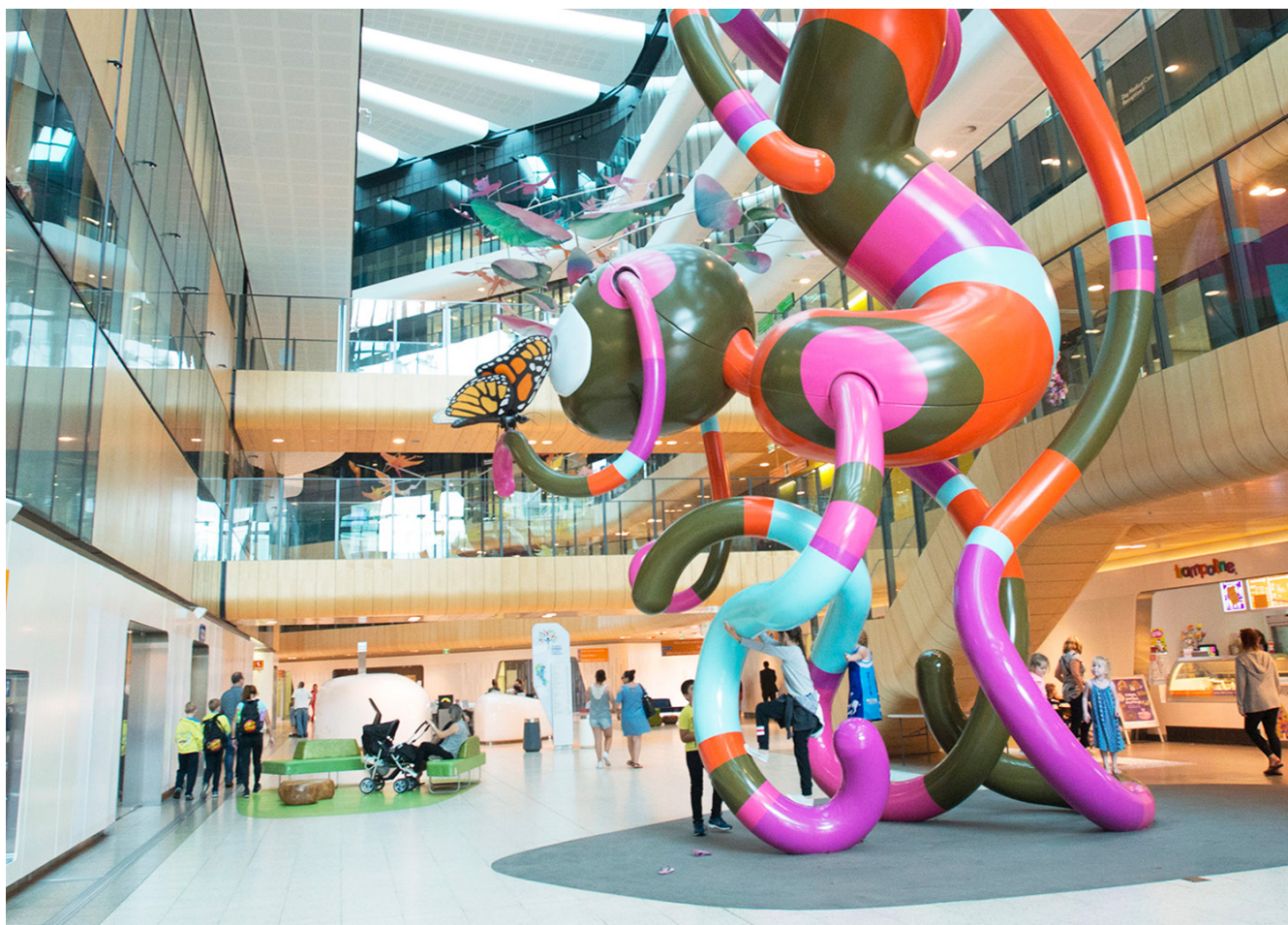
Supported by The Royal Children's Hospital Foundation



Appointment of Children's Cancer Foundation and My Room Chair in Childhood Cancer

VCCC Alliance and Department of Paediatrics, Melbourne Medical School
Faculty of Medicine, Dentistry and Health Sciences

Photographer Phoebe Powell's 'Thank you' photo essay commissioned by the Metro Tunnel Creative Program. Photograph by Phoebe Powell.



The Melbourne Children's Campus

Melbourne Children's is a fully integrated academic paediatric teaching hospital and research institute which is unique in Australia and acclaimed internationally. Bringing together four outstanding organisations, The Royal Children's Hospital, the Murdoch Children's Research Institute, The University of Melbourne Department of Paediatrics and The Royal Children's Hospital Foundation, the fundraising arm of the hospital, the Melbourne Children's is a single, purpose-built and multi-award winning campus in the city of Melbourne.

The purpose of the Melbourne Children's is to collaborate, as world leaders, in advancing child and adolescent health through prevention, early intervention and health promotion, together with the highest quality clinical care, outstanding research and comprehensive education and training. Together the partnership forms an interwoven, symbiotic relationship delivering high quality clinical services underpinned by research and education. Collectively the independent entities contribute to a paediatric health sciences precinct which is greater than the sum of the parts. The presence of each benefits the other, ensuring the primary focus of each entity is achieved.

For more information, please visit:
www.melbournechildrens.com/about/



Our partner, The Royal Children's Hospital

The Royal Children's Hospital is a state-wide teaching, training and research paediatric hospital. The hospital provides tertiary, secondary and primary child and adolescent health services, including mental health services.

The Royal Children's Hospital has a major leadership role in child and adolescent health in Victoria with state-wide specialist roles. It is a tertiary and quaternary paediatric referral centre providing specialist services and multidisciplinary clinics for sick infants, children and adolescents from Victoria, Tasmania, South Australia and southern New South Wales. The Royal Children's Hospital also provides specialised paediatric care for patients from overseas, particularly from south-east Asia, Nauru and Fiji.

The Royal Children's Hospital plays a major role in child public health, health promotion and advocacy for children and young people's health. It provides the full spectrum of medical and surgical paediatric services, as well as a number of specialist tertiary paediatric services and health promotion and prevention programs for infants, children and adolescents. These services are provided on both an inpatient and ambulatory basis.

Teaching, training and research are fundamental elements of the Royal Children's Hospital. The Royal Children's Hospital is part of a child health precinct, and in partnership with the Murdoch Children's Research Institute, the University of Melbourne, LaTrobe University, Deakin University, Monash University and RMIT University, ensures clinical services are integrally linked with teaching, training and research.

These relationships are crucial in providing opportunities for significant participation in the public health agenda for children and young people, for 'translational research' to drive laboratory and clinical findings into health promotion and prevention programs and for driving new paradigms and models of care.

For more information, please visit: www.rch.org.au/home

Our purpose

We want all children to have
the opportunity to live a
healthy and fulfilled life



Our partner, Murdoch Children's Research Institute

The Murdoch Children's Research Institute (MCRI), based at the Melbourne Children's campus, is the largest child health research organisation in Australia. MCRI's Vision and Mission is to be a major global contributor to the creation of knowledge and to obtain knowledge to improve the health of children.

Cancer research spans a number of the Institute's major strategic initiatives which include Genomics, Stem Cell Medicine, Clinical Translation, Infection & Immunity and Population Health. MCRI has established an integrated Cancer Flagship to bring current and future cancer research activities together at the Melbourne Children's Campus.

The scope of the Cancer Flagship includes the four pillars of research, from biomedical/discovery based research, through clinical and translational research, including early phase clinical trials, cohorts and registry studies, to primary/secondary/tertiary cancer prevention, amelioration or prevention of late effects of cancer therapy, including oncofertility, to paediatric cancer health services research and global paediatric oncology.

Other components of the Institute are the Victorian Clinical Genetics Services (VCGS) which is a wholly owned subsidiary of the Institute, providing diagnostic and clinical genetics services, Core Groups which include Data Science, the Melbourne Children's Trial Centre and Research Support & Operations.

Working side-by-side with the health professionals and academics at The Royal Children's Hospital Melbourne and the University of Melbourne's Department of Paediatrics gives researchers a unique 'bench to bedside' opportunity, enabling them to more quickly translate research discoveries into practical treatments for children.

For more information, please visit: www.mcric.edu.au



VCCC Alliance
Overcoming cancer together



Our partner, VCCC Alliance

The VCCC Alliance is a powerful partnership of 10 leading research, academic and clinical institutions working together to expedite and amplify leading-edge cancer research, knowledge and expertise to improve outcomes for people affected by cancer.

Through innovation and collaboration, the alliance is leading integrated, research-driven, consumer-informed cancer research, education and patient care. By capitalising on collective strengths, it is fundamentally changing the way we tackle cancer to accelerate the translation of scientific evidence into patient benefit.

Alliance members are:

- The Royal Children's Hospital
- Murdoch Children's Research Institute
- The University of Melbourne
- Peter MacCallum Cancer Centre
- Melbourne Health (including The Royal Melbourne Hospital)
- The Walter and Eliza Hall Institute of Medical Research
- The Royal Women's Hospital
- Western Health
- St Vincent's Hospital Melbourne (including St Vincent's Institute)
- Austin Health (including the Olivia Newton-John Cancer Research Institute and Austin Lifesciences).

The VCCC Alliance facilitates collaborative research, the translation of research into clinical practice, and new education and training programs to develop the future specialist workforce. The vision of the VCCC Alliance is to build on existing strengths within the members of the alliance to effectively deliver improvements in:

- reducing cancer risk factors and maximising screening
- ensuring rapid translation of research into effective treatments and clinical care
- investing in innovative treatments and technologies, and sustainable integrated care systems
- supporting and empowering patients and carers throughout their cancer journey

Three members of the alliance – the Peter MacCallum Cancer Centre, Melbourne Health and the University of Melbourne are co-located in the \$1 billion facility in Parkville, opened in 2016, which is purpose built for cancer research, education, training, treatment and care. The VCCC Alliance is supported by Victoria State Government.

For more information, please visit: www.vcccallyiance.org.au



Our partner, Peter MacCallum Cancer Centre

The Peter MacCallum Cancer Centre (Peter Mac) is Australia's only public hospital solely dedicated to caring for people affected by cancer, and one of an elite group of cancer hospitals worldwide with embedded research laboratories, which are uniquely integrated with extensive clinical and cancer experiences research programs.

Peter Mac provides services through its main campus in the Victorian Comprehensive Cancer Centre building in Parkville and sites in Bendigo, Box Hill, Moorabbin and Sunshine. Peter Mac treats more cancer patients each year than any other hospital in Australia and our highly skilled medical, nursing and allied health team is backed by the largest cancer research group in the country. It has over 2,500 staff, all focused on providing better treatments, better care and potential cures for cancer.

Peter Mac's research division has 580 laboratory and clinical researchers, with revenue for cancer research from peer-review, commercial and philanthropic sources of \$80 million in 2016/17. Peter Mac's fully integrated laboratory and clinical research has precipitated major changes in understanding the origins of cancer and in defining and testing new treatments in early phase and advanced clinical trials.

Key strengths include immunotherapy, cancer genomics, novel cancer therapeutics and early phase clinical trials.

Peter Mac's Cancer Immunology Program includes research projects that span laboratory studies in cancer cell biology and biochemistry, through to first in human clinical trials in a range of cancers. In the past, the Program has made critical discoveries on the mechanistic and cellular basis of cancer immune surveillance, the molecular and cellular functions of killer T cells, and human cancer susceptibility related to immune deficiency states. A range of active and adoptive immunotherapy and small drug development strategies are now in development, with special interest in developing CAR T cell technologies and treatments, particularly for Leukaemia, Lymphoma, lung cancer and rectal cancer. Other interests include the induction of immunogenic

cancer cell death using targeted drug therapies or radiation, the regulation of checkpoint molecule expression on cancer cells, and the CD73/adenosine-tumour immunosuppression pathway.

Peter Mac provides radiotherapy services for all paediatric patients under 16 years of age in Victoria and Tasmania and some select groups near the New South Wales/Victorian border. On occasion, Peter Mac does treat some remote patients from other states who have family in Melbourne. For those over 16 years of age, Peter Mac treats 16 to 18 year old patients who have been referred from the Royal Children's Hospital and Monash Children's Hospital as well as those with particularly paediatric type tumours or treatment scenarios from adult centres at Peter Mac and others (for example, Craniopharyngiomas, Pineal Germinomas and whole lung irradiation). The adult units at Peter Mac (for example, Haematology) will treat adolescent and young adult patients with the support of OnTrac - which provides educational, vocational and psychosocial support for patients from 15 to 25 years of age, as well as support for the treating teams in adult hospitals.

A number of laboratories at Peter Mac have research projects focussed on paediatric cancers including acute lymphoblastic leukemia, acute myeloid leukemia and neuroblastoma. Many of these projects are conducted with collaborators from the Royal Children's Hospital/Murdoch Children's Research Institute and Walter and Eliza Hall Institute of Medical Research (WEHI). For example, the Johnstone laboratory collaborates closely with Dr Paul Ekert (MCRI) and Dr Ashley Ng (WEHI) on developing genetically engineered mouse models of ALL and AML based on genetic sequencing of patient samples performed by Dr Ekert. Peter Mac has formed a close alliance with the Zero Childhood Cancer Program headed by Prof Michelle Haber and has established an immune monitoring laboratory to perform high resolution immune based analysis of samples obtained through the program.

For more information, please visit: www.petermac.org



Children's Cancer Foundation

The Children's Cancer Foundation funds world-class research and clinical care, and supports families through treatment. Founded by parents of diagnosed children in 1992, the Children's Cancer Foundation collaborates with hospitals, research institutes and universities who share an aligned vision and purpose to advance research, clinical care and family-support for childhood cancer. The Foundation advocates, facilitates and funds long-term, game-changing partnerships.

Having contributed more than \$56 million between 1992 and 2021, the Foundation is prioritising the improved treatment and lives of children and families affected by cancer and is committed to providing access to the best possible and innovative technologies, and optimum comfort and care through allied health support therapies for children under treatment.

My Room Children's Cancer Charity

My Room Children's Cancer Charity is a volunteer-led organisation, working together to support patients and families affected by cancer, without the bureaucracy. The charity relies on the generosity of its donors to fund support for families, medical equipment, clinical care, research and trials.

My Room was founded in 1992 by three families: The Marcoccis, The McGraths and The Rathbones. These families were personally touched by childhood cancer, and came together with the humble goal of raising enough money to renovate the rooms of the cancer ward of The Royal Children's Hospital. In 1998, that same group of dedicated parents helped create the Children's Cancer Foundation, to act as an umbrella organisation for groups supporting paediatric cancer. My Room and the Children's Cancer Foundation continue to work together, speaking with one voice, and acting with one vision to make Australia a global leader in the fight against childhood cancer.

Our Faculty

The Faculty of Medicine, Dentistry and Health Sciences (MDHS) is Australia's pre-eminent medical, health sciences and biomedical faculty and is recognised for its research, teaching, training and policy leadership across all of these fields.

The Faculty employs more than 2,500 members of staff, attracts more than 8,300 students each year and comprises six schools; 37 departments, centres and institutes; and 160 courses. It contributes almost 50 per cent of all research conducted across the University.

The Faculty is Australia's overall leader in clinical, pre-clinical and health sciences and is ranked 11th globally in 2021 by the Times Higher Education World University Rankings. In 2021 the Academic Ranking of World Universities ranks the University of Melbourne as first in Australia in clinical medicine (14th internationally), public health (16th internationally), human biological sciences and medical technology. The University educates more health professionals, graduates, research and higher degree students and attracts more national competitive funding than any other Australian university.

Consistent with the introduction of the Melbourne Model, the Faculty offers a suite of professional entry masters level graduate programs, including the Doctor of Medicine (MD), the Doctor of Dental Surgery (DDS), and the Doctor of Physiotherapy (DPT). There are also a number of other successful graduate level programs such as the Master of Public Health, Master of Primary Health Care, Master of Social Work, Master of Clinical Audiology, Master of Speech Pathology, Master of Clinical Optometry, and many more in nursing, social work, health sciences and psychology.



Co-authorship with more than 140 countries in the last five years. Top five countries are United States, England, Canada, Germany and the Netherlands.



Annual research income of more than AUD\$ 385million in 2020: 50% of the University of Melbourne total.



More than 6,000 peer reviewed publications every year: >40% of publications include an international co-author.



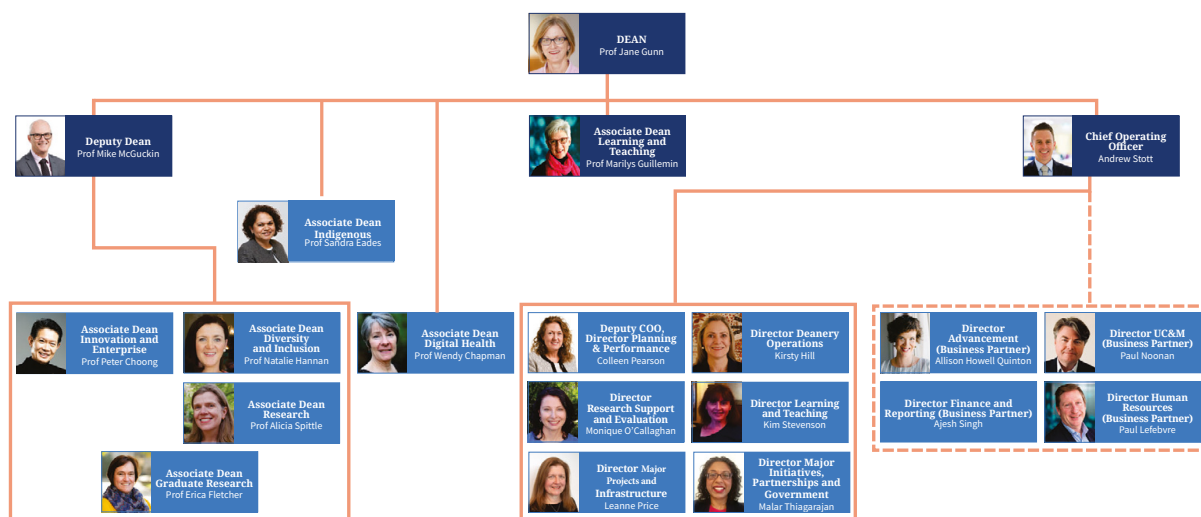
Approximately 2,300 graduate research students conduct research supervised by over 1,500 staff and honoraries across the Faculty's six schools and in affiliated health services and research institutes.



University departments are embedded in a range of health services including the Austin Hospital, Northern Hospital, Royal Melbourne Hospital, St Vincent's Hospital, The Royal Women's Hospital, Royal Children's Hospital, Western Hospital, Mercy Hospital and rural partners such as Goulburn Valley Health.



The Faculty employs over 2,200 academic staff and more than 800 professional staff. A large portion of our workforce are located in hospital-based departments. The Faculty also has over 4,000 honorary staff including hospital-based staff and those from partner institutions.



Chief Operating Officer Portfolio

■ Deanery Executive

November 2022



These programs which are unparalleled in the Australian higher education system provide new approaches to educating health care professionals and are specifically designed to better align student attributes to the sector's needs.

Please see study.unimelb.edu.au for further information.

The Faculty has strong collaborative links within the Melbourne Biomedical Precinct, as well as with many leading national and global research institutes, clinical centres and health-related industries. These collaborations provide students, researchers, educators and clinical academics with excellent resources and infrastructure. They have led to significant medical breakthroughs and fostered new world-class facilities such as the Victorian Comprehensive Cancer Centre, Melbourne Brain Centre, Doherty Institute, Bio21 Institute and Royal Children's Hospital campus.

Melbourne Biomedical Precinct

The Faculty is a key collaborator within the Melbourne Biomedical Precinct – a leading global research and teaching hub and one of the top five biomedical precincts in the world. Precinct partners share an impressive history of ground-breaking medical discoveries and developments, as well as a future-focused outlook on innovative and transformative health care.

Key precinct partners include WEHI, Murdoch Children's Research Institute, Peter MacCallum Cancer Centre, Florey Institute for Neuroscience and Mental Health, Centre for Eye Research Australia and Bionics Institute. The 25 precinct partners, located within easy reach of each other, are engaged in breakthrough research, education and the delivery of clinical care and health services. This dense concentration of hospitals, research institutes and academic campuses provides the opportunity, which is unparalleled in Australia, for talented individuals from a range of disciplines to engage in world-class collaborations.

For more information about the Biomedical Precinct please visit www.melbournebiomed.com.

Melbourne Academic Centre for Health (MACH)

MACH is a joint venture between 19 full partners, including 10 Victorian healthcare providers, 8 independent medical research institutes and the University of Melbourne, with La Trobe University as an affiliate member. Across this partnership, which has nearly 40,000 staff, around \$7 billion is invested each year in health care, research and education. The MACH partnership brings together health services and health scientists committed to translation of interdisciplinary research that will benefit patients and strengthen the economy. MACH addresses current health challenges by delivering precision care tailored to the needs of patients, developing world-leading research into tomorrow's healthcare and nurturing future leaders of innovative care.

For more faculty information, please visit our website at mdhs.unimelb.edu.au

Our Values



Caring for people is at the heart of what we do. Our Faculty values guide our ways of working and we are committed to a diverse and inclusive culture that enables our staff and students to reach their full potential. This includes our commitment to progressing gender equity which is aligned with the University's Athena SWAN Bronze Award from SAGE (Science in Australian Gender Equity), and championing the Pride in Action Network, the University's inaugural LGBTQIA+ ally network.

We work to improve the health and wellbeing of the communities we serve. We invest in developing the careers and wellbeing of our students and staff, fostering a culture that supports us all to do our best work. We are guided by our values in our pursuit of excellence.

Respect

- We respect the diversity of histories, lived experiences and futures of our students, staff and communities we serve
- We see diversity, inclusion and personal growth as a strength
- We create a safe place to work that fosters belonging and aspiration

Accountability

- We are accountable for our actions, outcomes and conduct
- Our processes are efficient and transparent
- We hold ourselves accountable to those we serve
- We uphold our sense of place and our responsibility for the environment

Compassion

- We provide an environment that is caring and upholds the health and wellbeing of our students and staff
- We have the courage to act on our convictions
- We communicate and clarify our expectations of each other

Collaboration & Teamwork

- We collaborate with each other and our partners to lead the advancement of health and wellbeing
- We connect locally and globally to advance and enrich the communities we serve
- We share our knowledge and expertise to achieve our goals
- We drive innovation and are open to new perspectives, ideas and ways of working

Integrity

- We apply the highest standards of ethics and quality in all that we do
- Honesty and trust underpin our relationships
- We believe in freedom of intellectual enquiry and the value of diverse cultural knowledges
- We are humble learners and proud leaders

Artist statement: This artwork depicts the united values MDHS are guided by. The shields are a representation of how we are protected by these values but also loyal to them. Surrounding the shields are the communities that are connected to MDHS, such as the Hospitals and research centers. The line work pattern in the shields represent how each value is linked as each one doesn't work without the other – Kat Clarke

Wurundjeri translation – Auntie Gail Smith,
Wurundjeri Elder from Wurundjeri Council



Our Culture

Our Faculty is ranked among the top in the world for its impact, innovation, education, prosperity and growth. We equally recognise and celebrate our rich diversity across our staff and student populations. The University is recognized as an employer of choice for women and is one of 40 organisations to participate in the Science in Australia Gender Equity (SAGE) pilot program of the Athena SWAN in Australia. We were also recently awarded a bronze award on the Australian Workplace Equity Index (AWEI) with significant contributions to achieve this coming from our Pride in Action networks initiatives.

We offer the opportunity to be part of a growing list of networks and initiatives across the Faculty such as [the Supporting Women in MDHS \(SWiM\) program](#), [including mentoring](#), [Women Clinicians in Academic Leadership](#), [Pride in Action network](#), Indigenous Development network, Early Career Researcher network, Professional Leaders network and our Faculty Administration network.

We are creating new traditions and continually expanding our offer to our people to ensure we provide a welcoming and inclusive environment for you to thrive and exceed your own expectations. As a member of our University community, you will have access to:

- Increased [flexible work](#) possibilities including flexible hours and work from home options
- Paid parental leave and retention benefits
- Salary packaging of childcare

- Subsidised onsite sporting facilities
- A tailored transition plan to take on this new role
- Professional development opportunities including a University wide Academic Women in Leadership program
- Relocation support (where applicable)
- Strategic grants for outstanding Women
- Our campuses with 11 libraries, 12 museums and galleries and 37 cultural collections

We are integrating our values and behaviours into the way we work with a strong focus on leadership accountability. Our people's safety and wellbeing are a top priority. We want you to feel safe in talking about mental health and trust that bullying, harassment, sexual misconduct and discrimination will not be tolerated.

Performance relative to opportunity is another important component of promoting an inclusive environment. This is also reflected in our recently announced momentum fellowships that are designed to support researchers who have managed extraordinary personal circumstances including disability.

Benefits can also be tailored to best suit your needs and circumstances. Speak with us about how we can support you to become a valued member of our dynamic world-class organisation.

Our School

Melbourne Medical School

Established in 1862, Melbourne Medical School (MMS) is the oldest medical school in Australia. It is internationally renowned for global leadership in teaching and training, health research, policy and practice. MMS has strong academic partnerships and groundbreaking collaborative research programs with leading public and private hospitals, as well as leading medical research institutes and centres in Australia and internationally.

MMS spans all major fields of medicine and is comprised of thirteen clinical departments. MMS has more than 1,000 academic and professional staff members located at the Parkville campus or embedded within health services throughout metropolitan Melbourne and rural Victoria.

MMS is committed to improving community wellbeing through the discovery and application of new knowledge. With annual research income of \$165 million, the School's research effort is highly collaborative, spanning research programs from basic to translational. The School has research collaborations across the 47 partner organisations in the vibrant Melbourne Biomedical Precinct, as well as nationally and internationally.

The School's flagship Doctor of Medicine (MD) degree was the first Masters level entry-to-practice qualification of its kind developed in Australia, setting a new benchmark in medical education. Now, the new curriculum launched in 2022 has created more responsive, modular, technology-enhanced learning for state-of-the-art curriculum delivery. Continuous research and discovery options, and an ability to tailor the degree, allows each student to gain deeper experience in areas of greatest interest. The MD Rural Pathway offers students the opportunity to undertake their entire program in rural Victoria, with a \$6.5 million expansion of facilities in Shepparton to accommodate this. There is also an expanded range of joint degree pathways on offer.



A diverse and highly relevant portfolio of training programs, with over 600 higher degree by research candidates.



Deep partnerships with health services across the communities we serve with more than 2,725 honorary appointees contributing their expertise.



High impact and clinically relevant research environment, resulting in a 45% increase in funding since 2017.



Accountable commitment to a highly engaged workforce, with more staff than ever transitioned to continuing contracts and 39% of Professorial positions occupied by women.

In support of its diverse and inclusive culture the School has introduced initiatives and programs including: the MMS Strategic Grants for Outstanding Women which is co-sponsored by health service partners and the MMS Indigenous Development Grants for the professional development of Aboriginal and Torres Strait Islander staff, prospective staff and graduate research students.

For more information, please visit medicine.unimelb.edu.au

Melbourne Medical School Interim Head of School: Prof Nicola Lautenschlager

Department	Heads of Department
Baker Department of Cardiometabolic Health	Prof Karlheinz Peter
Department of Clinical Pathology	Prof Sean Grimmond
Department of Critical Care	Prof David Story
Department of General Practice	Prof Lena Sanci
Department of Infectious Diseases	Prof Sharon Lewin
Department of Medical Education	Prof Stephen Trumble
Department of Medicine	Prof Jo Douglass
Department of Obstetrics and Gynaecology	Prof Susan Walker
Department of Paediatrics	Prof Sarath Ranganathan
Department of Psychiatry	Prof Chris Davey
Department of Radiology	Prof Patricia Desmond
Department of Rural Health	Prof Julian Wright
Department of Surgery	Prof Peter Choong



Our Department of Paediatrics

The Department of Paediatrics is the flagship representative of the University's partnership with The Royal Children's Hospital and the Murdoch Children's Research Institute, and is co-located with them on the Melbourne Children's Campus on Flemington Road, Parkville.

The Department of Paediatrics is a large department within the Melbourne Medical School. The Department has responsibility for the Child & Adolescent Health (CAH) component of the Doctor of Medicine (MD). There are approximately 80 academic and professional staff, including 25 professorial positions, 430 honorary academic staff, and more than 150 students who are enrolled to pursue research degrees including Honours, Masters and PhD. Approximately 220 students rotate throughout the year undertaking the CAH clinical studies, and a further 60 students undertake research in the MD Research Project component of the MD course. In 2021 the Department published more than 1000 peer reviewed publications.

The Department delivers a range of teaching programs across the clinical, biological and health sciences, and within the MD program, it is responsible for the teaching of child and adolescent physical and mental health, paediatric surgery, and other specialties relating to children, adolescents and their families. Other programs include post graduate courses in Adolescent Health & Welfare, Genetic Counselling, Genomics and Health as well as Research Higher Degrees.

The Department of Paediatrics plays a pivotal role in the life of the Melbourne Children's Campus, with its members being actively involved in policy development and senior management. Members of the Department make major contributions to the development of child and youth health policy and to broader aspects of health policy at a National and State level.

Working with its partners, The Royal Children's Hospital and the Murdoch Children's Research Institute, the University's Department of Paediatrics' vision for the Melbourne Children's campus is to be an integrated research, teaching and clinical environment with the overall aim of benefiting child and adolescent health while connecting researchers and educators on the Melbourne Children's Campus with the talent and skills of the broader University.

medicine.unimelb.edu.au/school-structure/paediatrics



Collaborating Partners

Zero Childhood Cancer

Zero Childhood Cancer is the most exciting childhood cancer research initiative ever undertaken in Australia. This world-class program brings together all major Australian clinical and research groups working in childhood cancer to offer Australia's first ever personalised medicine program for children with high-risk or relapsed cancer (<30% survival).

Led by Children's Cancer Institute and The Kids Cancer Centre at Sydney Children's Hospital Randwick, part of The Sydney Children's Hospitals Network, Zero Childhood Cancer is an unprecedented collaboration that stands to revolutionise the way childhood cancer is treated, and represents an integral step towards curing every child.

The Zero Childhood Cancer clinical trial remains open with over 400 children enrolled by 2020 and will be recruiting children with newly diagnosed aggressive cancer each year until then.

www.zerochildhoodcancer.org.au

Victorian Paediatric Cancer Consortium

The VPCC encompasses multi-institutional partnerships between the University of Melbourne, Monash University, Royal Children's Hospital, Monash Children's Hospital, Hudson Institute of Medical Research (HIMR), MCRI, PMCC and Walter & Eliza Hall Institute (WEHI) that span discovery research (personalized paediatric oncology, tissue microenvironment, development of novel CAR-T cell therapies, tumour epigenetics) and clinical innovation programs (pharmacogenomics/radiogenomics; risk assessment;

survivorship); integrated biobanking, data management and bioinformatics platforms; capacity building for training the next generation of researchers and clinicians, and annual scientific symposium and educational events. The consortium is led by A/ Prof Ron Firestein (Head, Centre of Cancer Research at the HIMR), Prof David Eisenstat (Head of the Children's Cancer Centre at the RCH) and Ms. Naama Neeman, VPCC Director (Operations). The VPCC provides an outstanding environment for leadership, collaboration and research.

Hudson Monash Paediatric Precision Medicine Program

The Hudson-Monash Paediatric Precision Medicine program is a world-class program, which includes scientific collaborations and data sharing with 33 health services, universities and research centres nationally and internationally across four continents. Under this \$6 million program funded by the Children's Cancer Foundation, every Victorian child diagnosed with brain cancer and solid tumours will benefit from molecular analyses, including whole-genome sequencing, targeted sequencing, and drug and genetic screens tested on living organoids. Eighteen staff – including scientists, oncologists, bioinformaticians, post-doctoral fellows and PhD students – work together to fast-track targeted treatments that will give these children the best chance of recovery.

In 2020 a paediatric Molecular Tumour Board was implemented as a central, comprehensive and co-ordinated multidisciplinary approach to clinical precision medicine across Victoria.

<https://hudson.org.au/research-program/hudson-monash-paediatric-precision-medicine-program/>

Position Summary and Selection Criteria

Classification	Professor - Level E or Associate Professor - Level D
Salary	Negotiable salary package
Superannuation	17%
Working hours	Full time
Basis of Employment	Fixed term for 5 years (renewable)

Position Summary

The Children's Cancer Foundation and My Room Chair in Childhood Cancer is a new academic leadership position made possible by generous funding from the Children's Cancer Foundation and My Room in collaboration with key VCCC Alliance members, University of Melbourne, The Royal Children's Hospital, Murdoch Children's Research Institute and the Peter MacCallum Cancer Centre.

We are seeking a leading clinician-scientist or a translational paediatric cancer specialist for this role to drive research, teaching/training and clinical care delivery in personalised, "precision" medicine in paediatric cancer, including immunotherapy. The Children's Cancer Foundation and My Room Chair will provide academic leadership in personalised clinical care and research in paediatric cancer and provide support and mentorship to facilitate growth of the discipline, and incorporation of leading edge research insights into routine clinical practice for children in Victoria and beyond.

It is anticipated that a clinical scientist appointee will contribute to clinical care at the Children's Cancer Centre at the Royal Children's Hospital, and will help drive the clinical and translational research strategy, working closely with the Director of the Royal Children's Hospital Children's Cancer Centre, other leaders in the Victoria Paediatric Cancer Consortium and in the Melbourne Children's Cancer Research Flagship. Clinical sessions will be appropriately remunerated, either as a conjoint appointment or as a separate contract. An appointee from a translational scientist background will be expected to develop research that will impact clinical care and directly benefit patients.

Highest quality research and clinical facilities and support will be provided to ensure that the appointee delivers on the expectation to drive and participate in collaborative activities across the Parkville precinct and beyond. The Melbourne Children's Campus is a fully integrated academic health centre bringing together the Royal Children's Hospital, the Murdoch Children's Research Institute, and the University of Melbourne Department of Paediatrics in a single, purpose-built and multi-award winning campus in the city of Melbourne. Collaboration with national programs such as Zero Childhood Cancer will also provide key opportunities for partnerships across childhood

cancer clinical and research networks. Within the University, additional significant collaborative opportunities exist within the Melbourne Medical School, cognate Schools in the Faculty (e.g. School of Biomedical Sciences and School of Population and Global Health), and across the broader University and its affiliated Hospitals and Medical Research Institutes. A close relationship with leading research centres located in the landmark Victorian Comprehensive Cancer Centre building such as the Centre for Cancer Research (headed by Professor Sean Grimmond) and the Centre for Cancer Immunotherapy (headed by Professor Joseph Trapani) will also be available to maximise opportunities for research integration and translation.

The position description should be read alongside [Academic Career Benchmarks and Indicators](#) for Level E appointments. Appointments at Level D (Associate Professor) are also invited for candidates who are able to demonstrate that they are on the trajectory towards Level E with demonstrable outstanding leadership, research and academic qualities.

As a professor or associate professor of the University of Melbourne, the appointee will be expected to provide transformational leadership and dedicated service for the University and the broader community beyond their leadership within their academic fields and disciplines.

1. Key Responsibilities

1.1 TEACHING AND MANAGEMENT

- Take a senior leadership and mentorship role in precision medicine, including immunotherapy, in paediatric oncology
- Foster and maintain the strong and cooperative partnerships and collaborations in paediatric oncology at a Department, precinct, State, National and International level
- Provide a continuing high level of personal commitment to, and achievement in paediatric oncology
- Provide leadership and active participation on a range of committees and boards across the Department, School, Faculty, University and partner organisations

1.2 TEACHING AND EDUCATION

- Participate in the teaching and curriculum development and review activities of the Department of Paediatrics and the Melbourne Medical School
- Participate in the teaching and mentoring of paediatric oncology fellows
- Play an active role in the promotion of academic medicine, and in support of clinician-scientist training and development
- Provide expert advice to government and peak bodies (local, state, national, international)

1.3 RESEARCH AND RESEARCH TRAINING

- Set the direction, and lead original, innovative, and distinguished research programs that have demonstrable impact and clear benefit to society
- Develop collaborative, cross-disciplinary research initiatives with national and international partnerships within and beyond the University
- Secure research grants and external research income that build institutional capacity and create opportunities for early career academic development
- Lead and facilitate translation of research into clinical practice in paediatric oncology
- Attract and supervise/mentor research undertaken by higher degree students, encouraging and facilitating student engagement in both discipline-specific and broader professional research networks.

1.4 ENGAGEMENT

- Provide leadership and be actively involved in engagement activities of the Department, Faculty, University and partner organisations
- Promote discussion and facilitate planning of engagement activities associated with new and existing collaborations with Paediatric Cancer partners
- Promote the Children's Cancer Foundation and its values and mission, and actively engage with the Foundation in its activities and events.

1.5 ADVANCEMENT

- Participate actively in Alumni relations and Advancement activities of the Melbourne Medical School and Faculty of Medicine, Dentistry and Health Sciences and support the activities of the Children's Cancer Foundation
- Lead active, meaningful and sustained engagement with donor/s of this position including regular contact with the donor/s providing updates on achievements, contributions and activities.
- Active participation in communications, publicity and events resulting in meaningful engagement with the donor/s, including in partnership with the Advancement Office.
- Undertake Annual impact reports to donor/s on achievements, contributions and activities.
- Consistently use endowment title in all official correspondence, communication and publicity.

1.6 OTHER RELATED ACTIVITIES

- Undertake clinical service within the Children's Cancer Centre at the Royal Children's Hospital, if applicable. This activity will be appropriately remunerated, either as a conjoint appointment or separately contracted with the Royal Children's Hospital.

2. Selection Criteria

2.1 ESSENTIAL

- A research doctorate
- A distinguished career of international standing in the field of paediatric oncology
- Demonstrated leadership in research, scholarship, education and for clinician scientists: clinical care in paediatric oncology
- Experience in strategic leadership in the development of a clinical research program or similar
- Demonstrated ability to foster academic achievement and clinical innovation in others
- Demonstrated ability to engage and collaborate with key internal and external stakeholders
- Ability to identify and exploit new opportunities in education, research and the provision of services to the benefit of the Department of Paediatrics and key partnering Institutions
- A strong record of success in obtaining external peer-reviewed research grants
- A strong record in paediatric cancer research, as evidenced by a superior publication record
- Ability to provide advocacy for children and adolescent health and wellbeing
- Alignment with the core values of the University of Melbourne
- Additionally, for clinician scientists:
 - » Medical qualification registrable with the Medical Board of Australia
 - » Paediatric fellowship of the Royal Australian College of Physicians or equivalent qualification
 - » Demonstrated leadership in clinical care in paediatric oncology
 - » Recognised clinical expertise in the field of paediatrics, if applicable
 - » Demonstrated ability to contribute to provide family-centred care

2.2 DESIRABLE

- A record of experience in senior academic leadership and management at Hospital, University or Medical Research Institute level
- Experience with strategic planning
- Experience with leading publicity and awareness campaigns
- Experience working with university, institute, hospital and/or community based foundations.

3. Special Requirements

- The appointee will be required to hold and maintain a current Working with Children Assessment notice <http://www.justice.vic.gov.au/workingwithchildren> and current police check.



Our Strategic Plan

Advancing Melbourne 2020 – 2030

The University's strategic direction is grounded in its purpose. While its expression may change, **our purpose is enduring: to benefit society through the transformative impact of education and research.** Together, the vision and purpose inform the focus and scale of our aspirations for the coming decade.

Advancing Melbourne reflects the University's commitment to its people, its place, and its partners. **Our aspiration for 2030 is to be known as a world-leading and globally connected Australian university, with our students at the heart of everything we do.**

We will offer students a distinctive and outstanding education and experience, preparing them for success as leaders, change agents and global citizens.

We will be recognised locally and globally for our leadership on matters of national and global importance, through outstanding research and scholarship and a commitment to collaboration.

We will be empowered by our sense of place and connections with communities. We will take opportunities to advance both the University and the City of Melbourne in close collaboration and synergy.

We will deliver this through building a brilliant, diverse and vibrant University community, with strong connections to those we serve.

The means for achieving these goals include the development of the University of Melbourne's academic and professional staff and the capabilities needed to support a modern, world-class university. Those means require a commitment to ongoing financial sustainability and an ambitious infrastructure program which will reshape the campus and our contribution to the communities we engage with. This strategy, and the priorities proposed, is centred around five intersecting themes; place, community, education, discovery and global.

More information about Advancing Melbourne can be found at about.unimelb.edu.au/strategy/advancing-melbourne.



Our city

Geography

Melbourne is the capital city of Victoria - and is the second largest city in Australia with a population of more than 5 million people and a metropolitan area of 9990.5 km². The Economist Intelligence Unit has rated Melbourne one of the world's most liveable cities for six consecutive years, based on its education, entertainment, health care, research and development, tourism and sport.

The City of Melbourne municipality, in which the University's main Parkville campus is based, covers 37.7 km² and has a population of more than 143 000 people. It includes the city centre and a number of attractive inner suburbs with thriving communities and businesses.

The City of Melbourne is home to residents from 180 countries who speak more than 233 languages and dialects and follow 116 religious faiths. The Wurundjeri, Boonwurrung, Taungurong, Dja Dja Wurrung and the Wathaurung people of the Kulin Nation are the Traditional Owners of the land now known by its European name of Melbourne.

The City of Melbourne is recognised as Australia's cultural capital with a number of world-class galleries and museums, internationally renowned food and wine regions, and an impressive year-round calendar of events catering for all tastes.

Parkville Campus

The Parkville campus provides easy access to cafes, shops and services; libraries with extensive collections; as well as cultural and sporting facilities. Nearby Lygon Street is home to a huge variety of cafes and shops while the northern end of the University is adjacent to the popular Princes Park, hosting a range of outdoor activities.

Parkville is recognised as the hub of Australia's premier knowledge precinct, comprising eight hospitals as well as numerous leading research institutes and knowledge-based industries. Although a sizeable portion of the Faculty of Medicine, Dentistry and Health Sciences is located in Parkville, the Faculty also has academic departments co-located at a range of health services throughout the Melbourne metropolitan area and rural and regional Victoria. These include St Vincent's Hospital, The Royal Victorian Eye and Ear Hospital, Austin Hospital, Western Health, Northern Health as well as the Department of Rural Health based at Shepparton in the Goulburn Valley with health services affiliations to almost 40 smaller towns in rural Victoria.



Need further information?

General information about the University of Melbourne is available through its website at www.unimelb.edu.au

About the University of Melbourne
about.unimelb.edu.au

About The Royal Children's Hospital
rch.org.au/home

2021 Annual Report
about.unimelb.edu.au/strategy/annual-reports

Faculty of Medicine, Dentistry and Health Sciences
mdhs.unimelb.edu.au

Melbourne Medical School
medicine.unimelb.edu.au

For queries, please email
snr-talentacq@unimelb.edu.au

Please do not send your application to this email address.

To Apply

Visit jobs.unimelb.edu.au/caw/en/listing/



THE UNIVERSITY OF
MELBOURNE