

Senior Lecturer in Occupational Therapy

School of Community Health
Faculty of Science

Classification	Level C
Delegation Band	Delegations and Authorisations Policy (see Section 3)
Nature of Employment	Continuing
Workplace Agreement	Charles Sturt University Enterprise Agreement
Date Last Reviewed	22 May 2019

Our University Values



Our Core Competencies

Charles Sturt University (CSU) staff are expected to demonstrate the following competencies:

Set Direction and Deliver Results

- Creating and innovating.
- Delivering results and meeting customer expectations.
- Entrepreneurial and commercial thinking.

Collaborate with Impact

- Relating and networking.
- Working with people.
- Persuading and influencing.

Lead Self and Others

- Adhering to principles and values.
- Deciding and initiating action.
- Adapting and responding to change.

Faculty of Science

The Faculty of Science delivers flexible, innovative [teaching programs](#) which provide graduates with the skills and knowledge to build a career, advance their profession and contribute to their community. We currently have more than 9000 students and over 500 staff dedicated to advancing scientific knowledge.

We are a leader in strategic and applied [research](#) in a wide array of sciences. We enhance and extend knowledge, train and educate future researchers and provide scientific solutions to current challenges. We achieve this through ethical practice, professional collaborations, industry involvement and a commitment to continual improvement.

We also provide a range of health and other services to our regional communities through our [enterprise](#) activities.

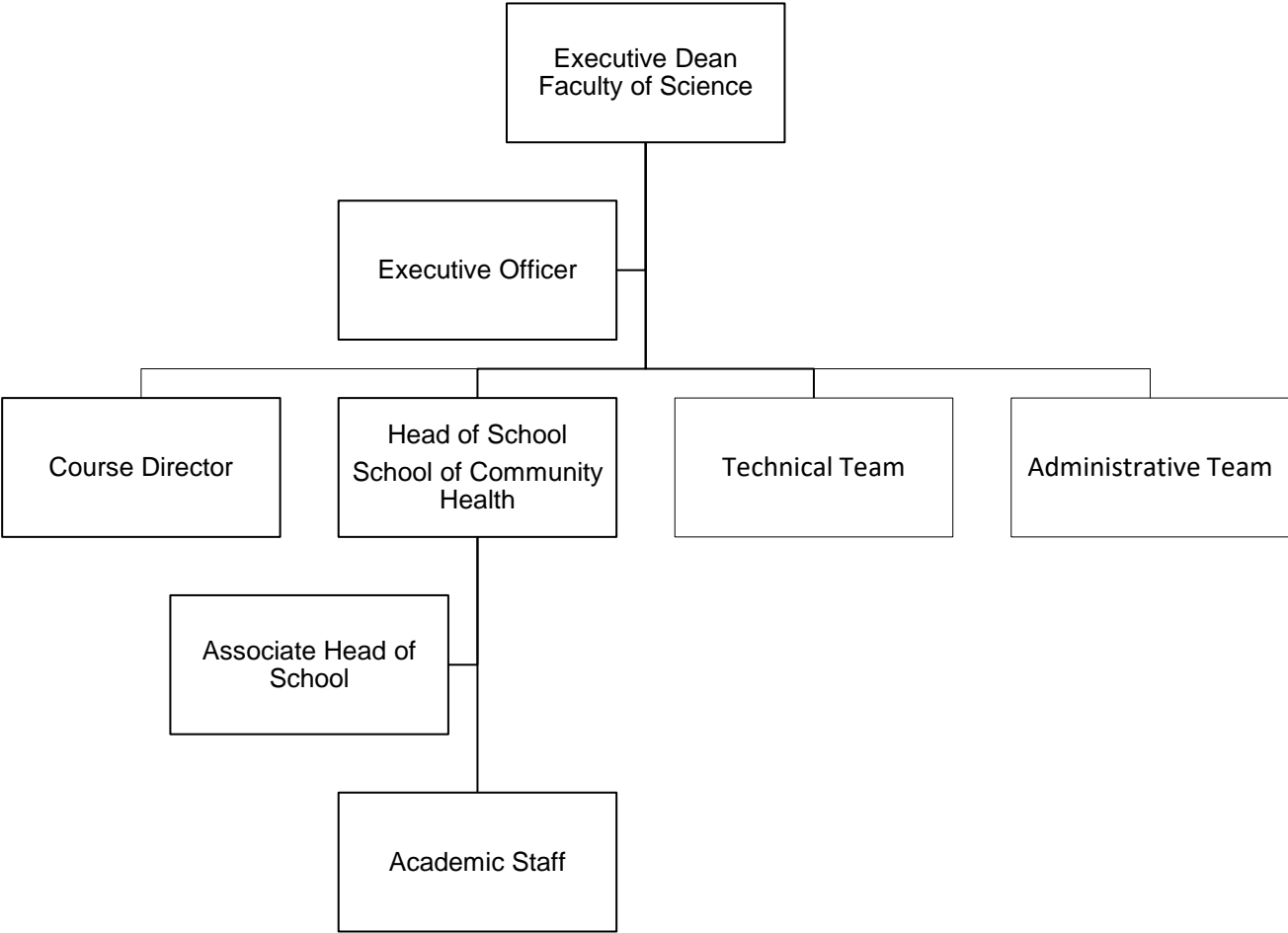
School of Community Health

The School of Community Health has a diverse range of staff who work together in the pursuit of excellence in teaching, research and community engagement. The School is focused on five professional courses including health and rehabilitation science, occupational therapy, physiotherapy, podiatry and speech pathology.

Staff in the School of Community Health are committed to work with regional and rural communities to train and graduate future health professionals; we use research to find answers to community questions; and we work together to support people to become agents for positive change within their community.

The School provides students with clinical training opportunities through the operation of commercial clinics offering services in Podiatry and Speech Pathology.

Organisational Chart



Reporting Relationships

This position reports to: Head, School of Community Health

This position supervises: Nil

Key Working Relationships

- Head of School
- Associate Head of School
- Courses Director
- Discipline Lead
- Faculty and School Staff

Position Overview

The Senior Lecturer in Occupational Therapy will actively engage in teaching, research, curriculum development and student engagement related to the occupational therapy course in the School of Community Health. The Senior Lecturer will be expected to use blended models of subject delivery in teaching to students, liaise effectively with the stakeholders of the course, participate in the administration and ongoing curriculum development and progress an active research profile aligned to the strategic direction of the School. Clinical and/or research experience in rehabilitation and/or paediatrics is desirable.

Principal Responsibilities

- Apply and make a significant contribution to the development, implementation and promotion of CSU learning and teaching methodologies, processes, technologies and tools to deliver high quality student centred learning opportunities in the occupational therapy discipline and as required to meet the education needs of the University. Achieve excellence in teaching in a range of delivery modes, which may include face to face and online teaching and assessment.
- Conduct ethical, high quality research at a national level through scholarship, publication and presentation.
- Develop and execute a research plan that aligns with CSU's Research Plan and objectives including pursuing funding opportunities and maintaining up-to-date research records within CSU's research database.
- Supervision of Research Higher Degree and Honours students.
- Build strong professional relationships with students and provide timely and appropriate consultation and feedback.
- Contribute significantly to collaborative processes to design, deliver and continually improve high quality courses and learning experiences for students including the giving and receiving of constructive feedback. This also includes active contribution to the governance, marketing and promotion, and administrative activities to facilitate the work of the Faculty/School.
- Provide leadership and management, as appropriate, in the convening, coordination and delivery of subjects and/or courses. This may include coordinating and/or leading other staff including casual academic staff.
- Establish and maintain strategic relationships with a range of stakeholders including community, government departments, and professional bodies that bring direct benefit to the strategic work of the University, in terms of teaching, workplace learning, course profile and/or areas of research strength.
- Expand current knowledge and understanding of occupational therapy through original contributions to industry engagement and/or scholarly activities or similar.

- Contribute to the development and improvement of policy and practice through involvement in professional/industry associations, accreditation authorities, conference organisations, advisory bodies, and national or international delegations, consistent with the University's Outside Professional Activities Policy.
- Other duties appropriate to the classification as required.

Physical Capabilities

- Physically able to sit for extended periods of time to perform reading, writing and computing related activities including keyboard and mouse operations;
- On occasion travel in/drive a university vehicle distances up to 500kms per day within the terms of the University's Driving Hours Guidelines and Policy available at: <https://policy.csu.edu.au/view.current.php?id=00176> and <https://policy.csu.edu.au/view.current.php?id=00184>.

Selection Criteria

Applicants are expected to address the selection criteria when applying for this position.

Essential

- A. A doctoral qualification relevant to occupational therapy or equivalent accreditation and standing AND eligibility for Australian Health Practitioner Regulation Authority (AHPRA) registration as an occupational therapist;
- B. A record of significant achievement relevant to the discipline area, and at a national level, in the scholarship of teaching and/or research/creative works or professional activity;
- C. Comprehensive knowledge of contemporary occupational therapy gained through industry experience and/or scholarly activities or similar, including occupational therapy practice in rural and regional areas;
- D. Demonstrated ability to lead others in the delivery of high quality course and subject design, and in the delivery of high quality student centred learning and teaching at an undergraduate level, that includes the capacity to incorporate new technologies and new approaches to teaching and learning;
- E. Demonstrated ability to lead and build effective relationships and partnerships in an academic setting.

Desirable

- F. Clinical and/or research experience in rehabilitation and/or paediatrics.

Information for Prospective Staff

Your Application

E-recruitment is the method by which CSU manages its recruitment processes and it is preferred that all applications be lodged using this method. Please refer to www.csu.edu.au/jobs/.

If intending applicants are unable to access this website, please contact the HR Service Centre on 02 6338 4884.

Staff Benefits

CSU is committed to providing an employment environment that fosters teamwork, innovation, reflective practice, continual learning, knowledge sharing and opportunities for staff to achieve their full potential. CSU is committed to providing a flexible working environment that encourages employees to live a balanced lifestyle, combining work and family responsibilities.

To find out more: <http://www.csu.edu.au/jobs/working-with-us/benefits-and-rewards>.

Essential Information for Staff

- All employees have an obligation to comply with all the University's workplace health & safety policies, procedures and instructions and not place at risk the health and safety of any other person in the workplace;
- All employees are required to be aware of and demonstrate a commitment to the principles of equal opportunity in the workplace;
- All employees are to ensure the creation and maintenance of full and accurate records of official University business adheres to the University's Records Management Policies; and
- All employees are expected to undertake an induction program on commencement.

Further information regarding the policy and procedures applicable to Occupational Health and Safety and Equal Opportunity can be found on the CSU website <http://www.csu.edu.au/division/hr/>.

Further information regarding the policies and procedures of CSU can be found in the CSU Policy Library at: <https://www.csu.edu.au/about/policy>.

The following links are listed from [CSU Policy Library](#) on relevant specific policies:

- [Code of Conduct](#)
- [Staff Generic Responsibilities Policy](#)
- [Delegations and Authorisations Policy](#)
- [Outside Professional Activities Policy](#)
- [Intellectual Property Policy](#)