



THE UNIVERSITY OF
**WESTERN
AUSTRALIA**

Academic Appointment

Professor and Director of Australian Herbicide Resistance Initiative (AHRI)

Information for Candidates





Thank you for your interest in the Academic Appointment of a Professor and Director of Australian Herbicide Resistance Initiative (AHRI) at The University of Western Australia (UWA).

Welcome

Thank you for your interest in the appointment of Professor and Director of Australian Herbicide Resistance Initiative (AHRI) at The University of Western Australia (UWA).

We offer you an exciting opportunity to work with an institution that has developed a strong reputation for excellence in teaching, research, community engagement and aspires to be ranked in the top 50 world universities by 2050.

At UWA we want you to challenge convention, embrace the opportunities that are open to you and inspire you, and subsequently lead you to inspire others. We offer you an environment in which you can make a difference to the world and encourage others to do so too. You are not only joining a World Top 100 university, you will be part of a community of people committed to the world's advancement.

As the only Western Australian university in the Group of Eight, a coalition of leading Australian universities, you will have access to an exceptional support network committed to creating change.

Your future UWA colleagues are academic leaders in the broadest sense and have an established international reputation for outstanding teaching and research. We look forward to hearing from like-minded candidates.



Professor Dawn Freshwater
Vice-Chancellor



The University of Western Australia

When you join the UWA community, you will find dynamic and forward-thinking colleagues who, like you, are determined to challenge convention and make new things happen.

We operate more than 130 research and training centres and receive roughly 80 per cent of all research funding to Western Australian universities annually.

Accepting a role at UWA allows you to use your research and academic curiosity to help set you, and this university, apart from others.

We celebrate strong industry partnerships and are placed equal first in Australia on key measures, including research intensity and research grants, according to the Good Universities Guide 2016. QS World Rankings has given us its highest rating of 5 Stars+ and we rank in the top one per cent of universities worldwide.

At UWA, we help people make the most of the possibilities presented. The University is a community of people with a desire to make the most of their potential and contribute to the world's advancement. Join us and pursue your ambitions.

uwa.edu.au





Mission

To provide world class education, research and community engagement for the advancement of prosperity and welfare of our communities.



Vision

To become recognised as one of the world's top 50 global universities by 2050.

University governance and management

The University is governed by the Senate, comprising 21 members from a range of backgrounds: community, staff, students and graduates.

Chaired by the Chancellor, Dr Michael Chaney AO CitWA, the key roles of the Senate are:

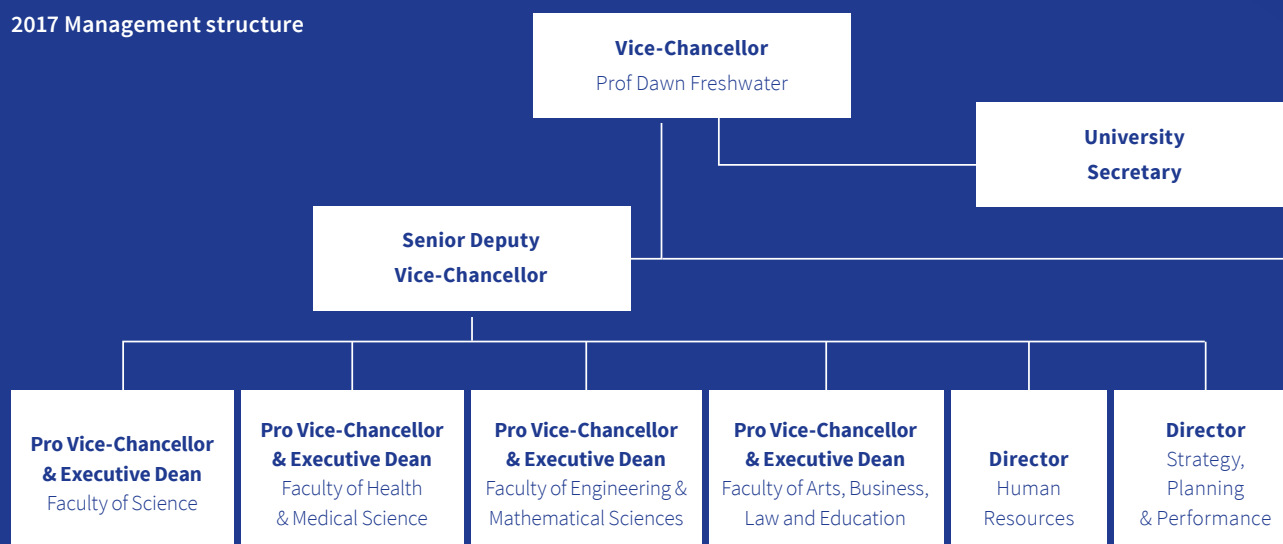
- broad overview of strategic directions in the University;
- overseeing corporate governance;
- overseeing management of financial, human and physical resources;
- performance monitoring;
- legislative responsibility; and
- support, guidance and performance monitoring of the Vice-Chancellor.

Key stats

Student enrolments 2016	24,470
Total staff (FTE) 2016	3,559
Research publications 2016	5,180



2017 Management structure



Key institutional networks

Group of Eight

The Group of Eight is a coalition of leading Australian universities, intensive in research and comprehensive in general and professional education.

go8.edu.au

Matariki Network of Universities

This international group of seven universities across seven nations focuses on strong links between research and undergraduate teaching, promoting international best practice in research and education.

matarikinetwork.com

Worldwide Universities Network

The major issues facing our planet are of a magnitude that no single institution or organisation can address on its own. WUN collaborations aim to involve a number of world- leading academic partners in addressing global challenges, including climate change, public health, global higher education and cultural identity.

wun.ac.uk



Deputy Vice-Chancellor Research	Deputy Vice-Chancellor Community and Engagement	Deputy Vice-Chancellor Education	Executive Director Corporate Services	Pro Vice-Chancellor Indigenous Education

The Opportunity

You will have the opportunity to work in a dynamic research environment in the UWA School of Agriculture and Environment's Australian Herbicide Resistance Initiative, a recognised world leader in the science of herbicide resistance, crop and weed science.

As part of this role, you will be expected to strengthen existing relationships with external stakeholders, including the Grains Research & Development Corporation (GRDC), government agencies, universities and the agribusiness sector. You will also contribute to the School's undergraduate and postgraduate teaching programs and research supervision in the areas of crop and weed science.



Faculty of Science

In the most recent ARWU rankings, UWA ranks 14th in the world and first in Australia in Agricultural Sciences.

shanghairanking.com/Shanghairanking-Subject-Rankings

UWA School of Agriculture and Environment (SAGe)

The UWA School of Agriculture and Environment is a comprehensive, research-intensive school that spans the broad disciplines of agricultural science, agricultural and resource economics, environmental science and geography and planning.

In the area of agricultural plant production the School houses the Australian Herbicide Resistance Initiative along with several other laboratories working on a range of agricultural species and research topics. The School, in collaboration with the other five Schools in the Faculty of Science, contributes high-quality teaching to several majors in the BSc and also to various MSc by coursework degrees.

science.uwa.edu.au/schools/agriculture-environment

The Australian Herbicide Resistance Initiative (AHRI)

AHRI is a research leader in herbicide resistance, crop and weed science. With major funding from the Grains Research and Development Corporation (GRDC), Australian Research Council (ARC) and industry, AHRI is focused on sustainable cropping and weed control. AHRI is a multi-disciplinary team of researchers and communications specialists and research activities range from fundamental through to applied solutions. Fundamental research occurs at the biochemical, physiological and genomic level. Crop production and stewardship of herbicide and non-herbicide weed control tools are the central tenets of AHRI research and communication.

ahri.uwa.edu.au



Western Australia and Perth

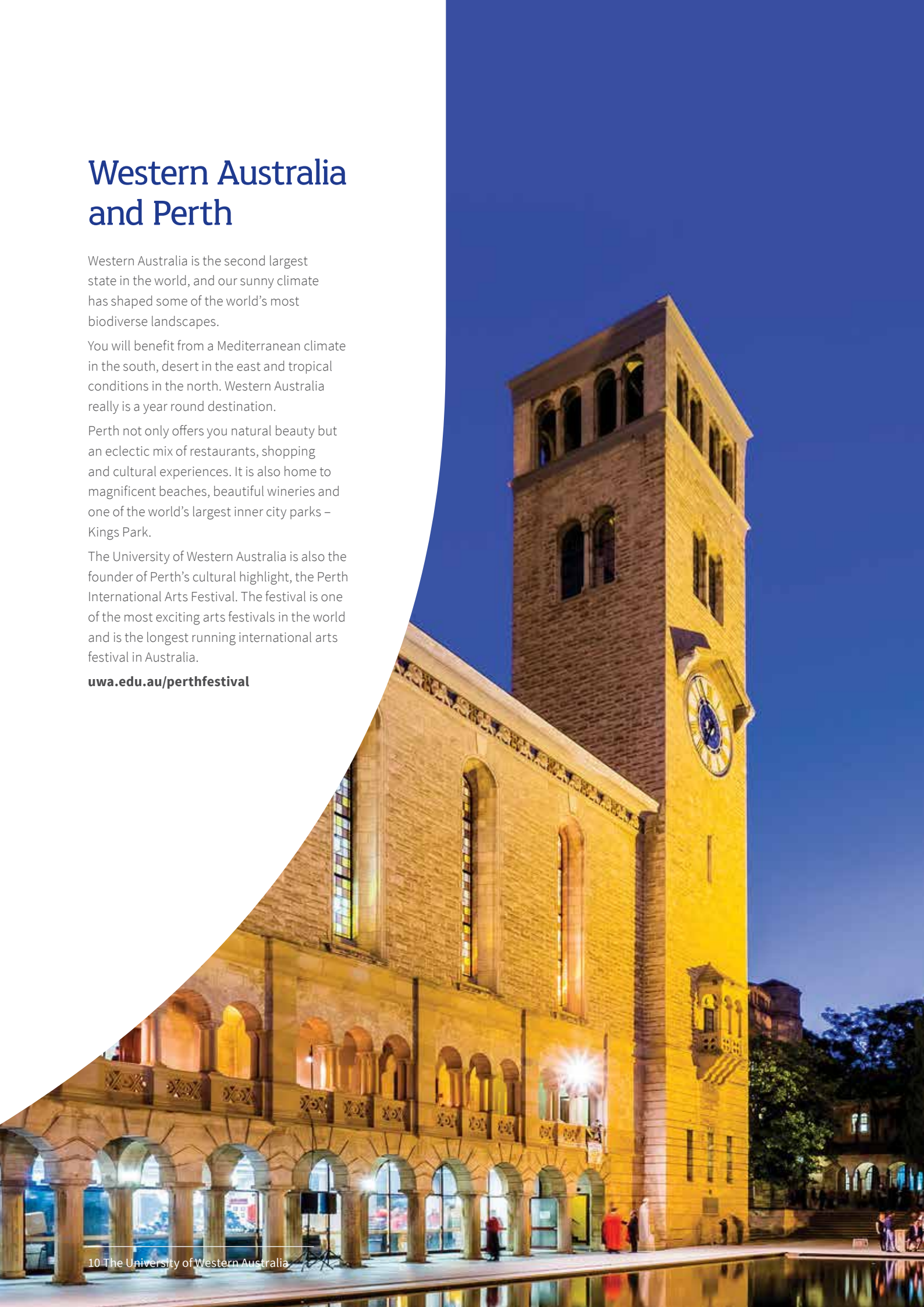
Western Australia is the second largest state in the world, and our sunny climate has shaped some of the world's most biodiverse landscapes.

You will benefit from a Mediterranean climate in the south, desert in the east and tropical conditions in the north. Western Australia really is a year round destination.

Perth not only offers you natural beauty but an eclectic mix of restaurants, shopping and cultural experiences. It is also home to magnificent beaches, beautiful wineries and one of the world's largest inner city parks – Kings Park.

The University of Western Australia is also the founder of Perth's cultural highlight, the Perth International Arts Festival. The festival is one of the most exciting arts festivals in the world and is the longest running international arts festival in Australia.

uwa.edu.au/perthfestival

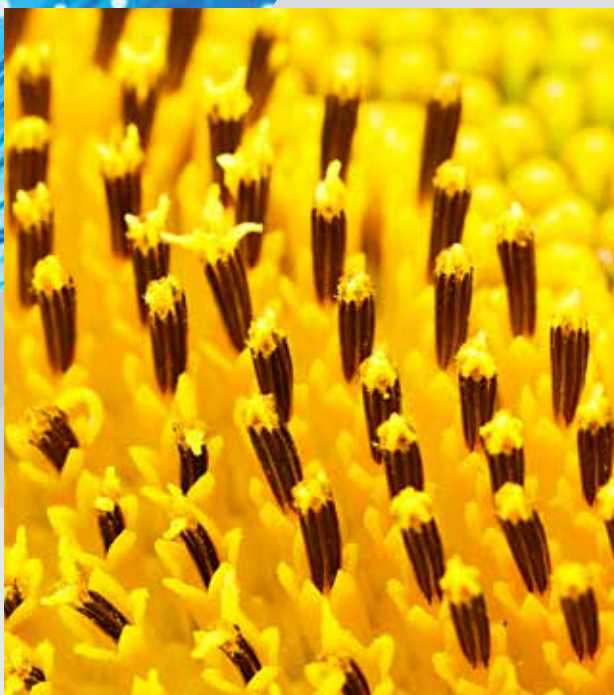


Role, key responsibilities and selection criteria

Role

The appointee will focus on crop and weed control technologies and act as Director of the Australian Herbicide Resistance Initiative (AHRI) within the School of Agriculture & Environment. The AHRI Director, will provide scientific leadership to the AHRI team as well as contributing more widely to leadership in crop/weed science at UWA. Fundamental to this role is commitment to external communication and relationships to enable continuation of the national and global leadership role of AHRI. The appointee will be a teaching and research academic in the School of Agriculture & Environment.





Key responsibilities

- Develop and lead an externally funded research program focussed on identifying and evaluating innovative weed control technologies applicable for the Australian grains industry.
- Contribute to coursework teaching in the areas of crop and weed science.
- Recruit and supervise PhD students in innovative weed control technologies within cropping systems, and related subject areas of weed and crop science.
- Produce high quality scholarly publications in international, high-impact scientific journals.
- Communicate AHRI's activities and knowledge to AHRI stakeholders with focus on applications of new knowledge for industry end-users.
- Develop and nurture national and international collaborative public and private sector partnerships in the areas of herbicide resistance and weed control technologies for the Australian grains industry.
- Lead research and manage the AHRI team and develop and maintain relationships with AHRI's collaborating partners.
- Foster and contribute to the AHRI communication program in outreach and training activities (meetings, workshops, webinars) on sustainable cropping, weed control and related areas.
- Establish good working relationships with key farming leaders in the Australia grains industry and agri-industry both nationally and internationally.
- Other duties as required in consultation with the Head of School.

Special Requirements

- Willingness to undertake extensive travel regionally and nationally, and on occasions international travel.

Conditions of employment

An attractive remuneration package will be negotiated and will include:

- Employer contribution to superannuation of 17%
- Recreation leave of 20 working days per annum
- Long service leave
- Opportunity for consultancy work within policy guidelines
- Eligibility for sabbatical leave
- Relocation assistance including airfares to the appointee and dependents and short term accommodation.

Selection criteria

Qualifications

PhD or equivalent in a discipline relevant to crop/weed science and weed control technologies.

Research and scholarship

- Proven research leadership and commitment to develop innovative weed control technologies and practices applicable in the Australian grains industry.
- A record of achievement in the identification, development and delivery of innovation and research in crop/weed science.
- A strong record of publications in relevant high impact peer-reviewed journals.
- Ability for successful supervision of postgraduate research students and projects.
- Ability to develop, articulate and deliver a strategic vision for crop/weed science research and scholarship within UWA and the Australian grains industry.

Leadership and values

- Leadership and clear vision: ability to articulate and secure commitment to AHRI's vision along with the track record and skills to lead a multi-disciplinary team to achieve competitive research outcomes and develop innovative weed control technologies and practices for application in the Australian grains industry.
- Communication and interpersonal: the ability to negotiate and listen, effective oral and written communication, presentation and media skills, ability to network and act as an advocate and demonstrated capacity to promote and maintain relationships.
- Management of people: the ability to develop staff, establish and communicate clear standards and expectations, delegate effectively and appropriately, make best use of skills, acknowledge and reward good performance, address poor performance, build trust, morale and teamwork.

Applications

Thank you for your interest in this position.

If you wish to proceed please refer also to the selection criteria in the UWA Position Description document.

Your application must include the following:

- A curriculum vitae;
- A statement that clearly addresses the selection criteria;
- A list of publications;
- The names and email addresses of three referees who can be contacted for a confidential report. Please note that your permission will be sought prior to referees being contacted.

The University of Western Australia provides visa sponsorship for international appointees.

UWA is a National Employer of Choice for Women and a member of Athena SWAN.

Lodging your application and closing date

Applications must be submitted online at:
jobs.uwa.edu.au

Closing date for applications is:
Monday 4 September 2017.

Full details are available from:
Professor Daniel Murphy, Head, UWA School of Agriculture & Environment.
Email: Daniel.murphy@uwa.edu.au
or
Professor Stephen Powles,
Director, AHRI
Email: Stephen.powles@uwa.edu.au

