

**Position Title:** Lecturer / Senior Lecturer  
**Position Classification:** Level B/C  
**Position Number:** 316092  
**Faculty/Office:** Engineering, Computing and Mathematics  
**School/Division:** Electrical, Electronic and Computer Engineering  
**Centre/Section:**  
**Supervisor Title:** Head of School  
**Supervisor Position Number:** 303042

## About the University

The University of Western Australia has an international reputation for excellence and enterprise and has been rated as one of the best comprehensive universities in Australia. It is one of the country's leading research institutions as demonstrated by our Nobel Laureate and is the only WA member of the prestigious "Group of Eight" research universities.

### Vision and Values

The University of Western Australia vision is achieving international excellence.

Its core values underpinning our activities are a commitment to:

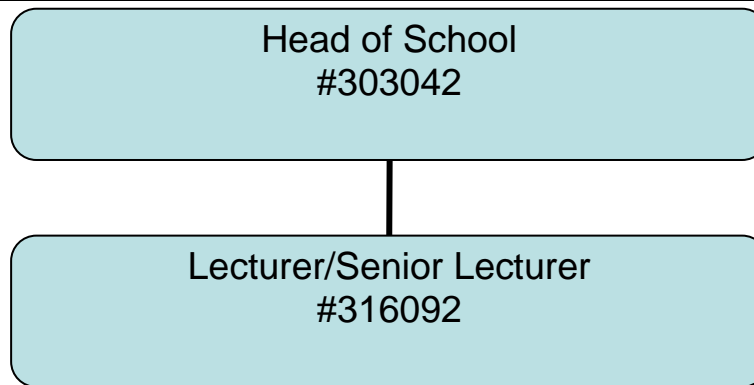
- A high performance culture designed to achieve international excellence
- Academic freedom to encourage staff and students to engage in the open exchange of ideas and thought
- Continuous improvement through self-examination and external review
- Fostering the values of openness, honesty, tolerance, fairness, trust and responsibility in social, moral and academic matters
- Transparency in decision making and accountability
- Equity and merit as the fundamental principles for the achievement of the full potential of all staff and students

All staff are expected to comply with the Code of Ethics and the University's Code of Conduct and demonstrate a commitment to its Equity and Diversity and Safety principles and the General Capabilities of personal effectiveness, working collaboratively and demonstrating a focus on results. Details of the University policies on these can be accessed at [http://www.hr.uwa.edu.au/publications/code\\_of\\_ethics](http://www.hr.uwa.edu.au/publications/code_of_ethics), <http://www.equity.uwa.edu.au> and <http://www.safety.uwa.edu.au/policies>.

## About the work area

The School of Electrical, Electronic and Computer Engineering is renowned for its award-winning researchers, teachers and facilities. The broad-based undergraduate and postgraduate programs are complemented by a wide range of research activities. The School has a number of award winning researchers across several disciplines. In the resource rich state of Western Australia the opportunities for partnership and collaborative research are extensive and the School has well established links with industry.

## Organisation chart



## Role statement

The successful candidate will conduct high quality and high impact research that contributes to the Faculty's initiative in Engineering for Remote Operations (ERO) and will build a strong, internationally recognised research programme that complements existing research groups.

As a passionate advocate for teaching excellence the successful candidate will develop and deliver undergraduate and masters curricula with on a focus on Electrical power engineering as well as contributing to the School, Faculty and University community by contributing to service activities.

## Key responsibilities

- Conduct high quality research within the general discipline of electrical engineering under the Faculty's research initiative in Engineering for Remote Operations (ERO); generate research output of high impact and international recognition, such as scholarly publications in high impact journals, standards for industrial practices and patents.
- Develop and maintain a strong, internationally recognized research programme synergistic with the existing ERO research groups within the School and the Faculty; attract research funding from the local and federal governments, industry and foreign funding agencies.
- Contribute to the development and delivery of world-class innovative teaching that delivers a high quality student experience in the degree programmes of the School and the Faculty at both undergraduate and postgraduate levels, and for both onshore and offshore teaching programs.
- Supervise research students at both the undergraduate and postgraduate levels and post-doctoral research fellows. Attract and recruit quality postgraduate students and postdoctoral research fellows.
- Duly provide services to the School, the Faculty and the University in its operation; develop and exercise leadership in its affairs; provide services to the government, the scholarly community and the broader public as required.
- Other duties as required.

## Specific work capabilities (selection criteria)

- A PhD in Electrical power engineering or a relevant field
- Research expertise in an area complementary to the Faculty's Engineering for Remote Operations (ERO) initiative. Examples of relevant areas include power systems and components, grid integration of renewables and future grids. Practical experience with hardware design and testing is preferred.
- Demonstrated track record in academic peer-reviewed publications in high quality international journals and grant writing success (both relative to opportunity).

- Demonstrated teaching and learning expertise in the discipline of electrical power engineering.
- Demonstrated track record in course development, engaging active learning techniques, student supervision, and successful student evaluation (relative to opportunity).
- Industry experience and/or research collaboration between academia and industry will be considered favourably.
- Ability to work independently as well as collaboratively in a multi-disciplinary school.
- Demonstrated well-developed communication skills.