



Senior Lecturer

Employer	Monash University Malaysia
School/ Unit	School of Engineering
Area of Specialisation/ Sub-Unit	Civil Engineering
Level/ Classification	Level C
Employment type	Full time
Work location	Malaysia
Date document created or updated	19 September 2017

Organisational context

Established in 1998, Monash University Malaysia is one of Malaysia's most respected universities. We are Monash University's global foot print in the Asian region, carrying with us the distinction of being the Malaysian constituent of a premier research intensive Australian university ranked among the top 100 universities in the world, and a member of Australia's prestigious Group of Eight (Go8). From humble beginnings, Monash Malaysia has grown in stature, and is now recognized as a leader in the international higher education sector in Malaysia.

As a self-accrediting University, we attract students not just from Malaysia, but from all over the world. Approximately 7,500 students representing almost 70 nationalities are currently enrolled at Monash Malaysia, and enjoy a quality academic experience.

Since our inception, Monash Malaysia has built a reputation for quality, credibility and integrity, and is held in high esteem by our students, alumni, industry and government. We encourage critical thinking to help discover new ideas, reveal new perspectives and devise solutions. We maintain a long and proud tradition of excellence in education, combined with liberal values of enquiry, providing a fertile environment for bright young minds to flourish, and life-long opportunities for those wishing to enhance their education and career.

For further information see: www.monash.edu.my.

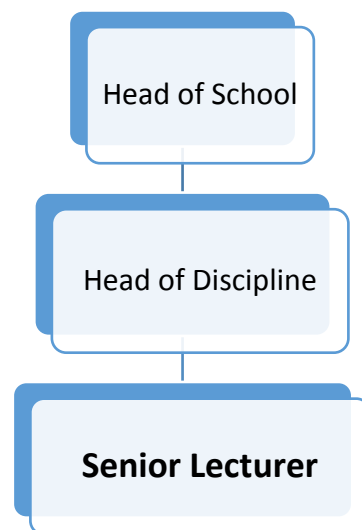
School of Engineering

The School of Engineering continues to grow rapidly, particularly in the delivery of undergraduate programs, and through the expansion of its facilities and infrastructure. In addressing global engineering challenges of the 21st century, the expansion of research activities in our Malaysian campus is of high priority for the University, reflected by the significant increase of school collaborative partnership with the industry sector, and through the offering of the Higher Degrees by Research, the Master of Engineering Science (Research) and the Doctor of Philosophy (PhD). The School currently has close to 1,500 undergraduate students, consisting of approximately 70 academic staff, and 42 professional and technical support staff.

The School offers the 4-year Bachelor degree in 6 disciplines: Chemical Engineering, Civil Engineering, Electrical and Computer Systems Engineering, Mechanical Engineering, Mechatronics Engineering and Software Engineering. These are the 6 core disciplines of Engineering, driven by the strong and growing demand for capable graduates in Malaysia, the Asian region and beyond.

In line with the School Development Plan and to meet the thriving market demand, the school has recently started to offer the Master of Advanced Engineering (Energy and Sustainability), a 1-year Master by coursework program.

For further information: www.eng.monash.edu.my



Position purpose

A Senior Lecturer is expected to make significant contributions to the teaching effort of the discipline, school, campus, faculty and university. An academic at this level is also expected to play a major role in scholarship, research and/or professional activities.

- **Reporting line:** The position reports to the Head of Discipline.
- **Supervisory responsibilities:** As assigned.
- **Financial delegation and/or budget responsibilities:** Nil.

Key result areas and responsibility

The key result areas of Research, Teaching and Service are the basis for the primary duties and responsibilities of the role. A workload will be agreed annually with the Head of Discipline in the Performance Development Plan process. Other duties may be required from time to time as directed by the Head of School.

Research

- Conduct independent research and act as principal investigator and project leader.
- Enhance the University's international reputation through research publications of appropriate quantity and quality, and contribute to worldwide debates at regional and international conferences.
- Obtain external research earnings through carefully prepared and successful grant applications as well as identifying potential income-generating programs and collaborative partnerships.
- Contribute to enhancing the quality and quantity of multiple-disciplinary research at the University in an area related or complementary to existing research priorities.
- Leading the supervision of research projects, manage dedicated research staff and postgraduate research students.
- Contribute to maintaining a collegial working atmosphere and stimulating research environment that will attract further research staff and Graduate Research students of the highest quality.

Teaching

- Prepare, review and deliver lectures, tutorials, practical classes, demonstrations, workshops, student field excursions, clinical sessions and/or studio sessions and seminars.
- Contribute in course coordination and developing curriculum, course materials and learning activities for undergraduate and postgraduate course/unit in which the academic teaches.
- Design and execute formative and summative assessment including marking that is aligned with student learning outcomes.
- Contribute to the scholarship of learning and teaching (including curriculum and student engagement) within the discipline.
- Supervise the program of study of honours students and of postgraduate students engaged in course work.
- Provide feedback to students on their learning through student consultations.
- Undertake administrative responsibilities primarily connected with units in which the academic teaches including course review, admission and accreditation processes.

Service

- Share in academic service responsibilities, including contributing to outcomes of the discipline and/or school meetings and/or internal campus committees.
- Foster strong engagement with the profession, industry, professional bodies and general community.
- Contribute to the development of collaborative linkages with Malaysian and regional agencies, institutions and industry.
- Contribute to the overall strategic planning and academic management of the School.
- Contribute to the development of other academic staff through mentoring, coaching and effective supervision.

Key selection criteria

Essential

1. PhD or equivalent in the area or a closely related discipline.
2. Eligibility to register as Graduate Engineer with Board of Engineers Malaysia. For details see http://www.bem.org.my/v3/app_graduate.html.
3. An established research agenda and established track record in research publications in the relevant discipline.
4. Evidence of successfully attracting competitive funding for research activities.
5. Demonstrated evidence of a high standard of teaching in the relevant field at tertiary level.
6. Demonstrated experience in supervising Graduate Research students.
7. Demonstrated evidence of engagement and/or collaboration with colleagues in teaching and research.
8. Demonstrated evidence of good oral and written communication skills.
9. Good interpersonal skills and demonstrated ability to work with students and staff from a diverse range of backgrounds.
10. Commitment to the academic discipline and to service to the University, the wider community and the profession.

Desirable

11. Demonstrated evidence of the use of technology and innovation to enhance teaching and research.
12. Determination to register as Professional Engineer (PEng) with Board of Engineers Malaysia. Applicants with this PEng qualification will have an added advantage.

Other job related information

Participation in key events for the Campus and School, as required:

- Monash Open Day and Graduation Ceremonies.
- Campus enrolment and induction sessions as the School's representative.
- Campus, School and Discipline functions that may take place after normal office hours.

Further Information

Confidential enquiries regarding the position may be made to:

Name/Position	Discipline	Contact Details
Professor Khu Soon Thiam Head of Discipline	Civil Engineering	Tel: +603-5515 9659 (<i>Direct Line</i>) Email: soon.thiam.khu@monash.edu