



Position Title:	Research Associate
Position Classification:	A8
Position Number:	314471
Faculty/Office:	Arts
School/Division:	Centre for the History of Emotions
Supervisor Title:	Professor
Supervisor Position Number:	313945

About the University

The University of Western Australia has an international reputation for excellence and enterprise and has been rated as one of the best comprehensive universities in Australia. It is one of the country's leading research institutions and is the only WA member of the prestigious "Group of Eight" research universities. In 2012 UWA joined the ranks of the World's top 100 universities, being ranked 96 in the Shanghai Jiao Tong University's Academic Rankings.

The University has a student enrolment of 24,500 and employs 3,700 full time equivalent (FTE) staff.

Vision and Values

The University of Western Australia vision is achieving international excellence.

Its core values underpinning our activities are a commitment to:

- A high performance culture designed to achieve international excellence
- Academic freedom to encourage staff and students to engage in the open exchange of ideas and thought
- Continuous improvement through self-examination and external review
- Fostering the values of openness, honesty, tolerance, fairness, trust and responsibility in social, moral and academic matters
- Transparency in decision making and accountability
- Equity and merit as the fundamental principles for the achievement of the full potential of all staff and students

All staff are expected to comply with the Code of Ethics and the University's Code of Conduct and demonstrate a commitment to its Equity and Diversity and Safety principles and the General Capabilities of personal effectiveness, working collaboratively and demonstrating a focus on results. Details of the University policies on these can be accessed at http://www.hr.uwa.edu.au/publications/code_of_ethics, <http://www.equity.uwa.edu.au> and <http://www.safety.uwa.edu.au/policies>.

All staff are to complete a Professional Development Review annually. Details of the University policies on Professional Development Review can be accessed at http://www.hr.uwa.edu.au/policy/toc/performance_management_of_staff/professional_development_review

A commencing Professional Development Review should be completed within six months of commencement. Please discuss with your supervisor who is responsible for undertaking the review.

Your work area

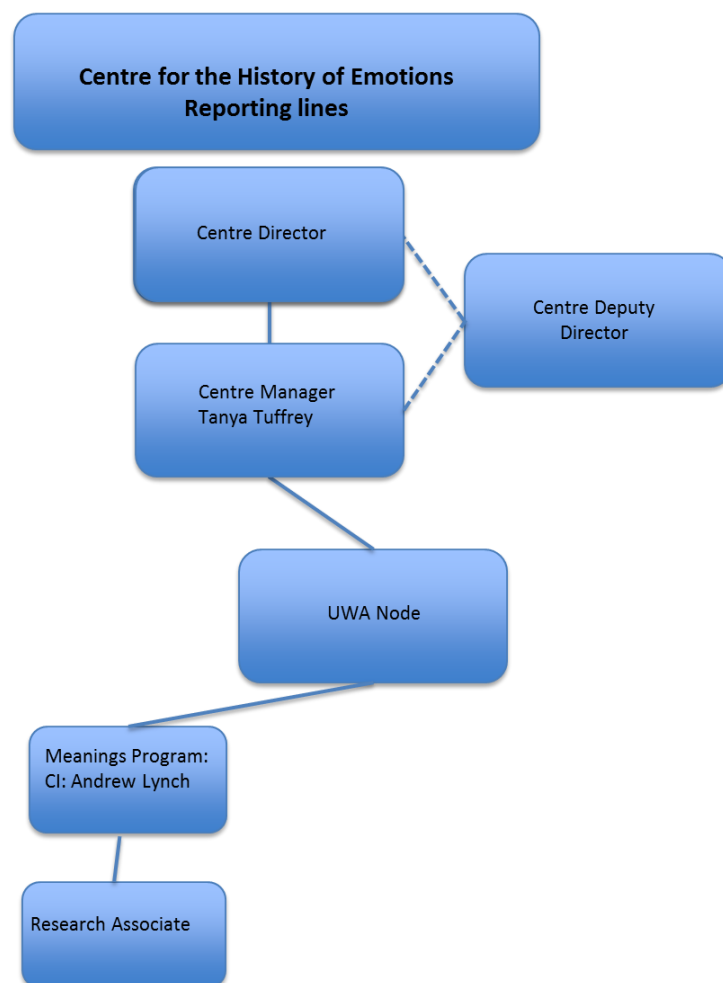
The Australian Research Council (ARC) Centre of Excellence for the History of Emotions includes research expertise at five nodes in Australia (the Universities of Western Australia, Adelaide, Melbourne, Sydney and Queensland), and research partnerships in the UK, Germany, Switzerland,

Sweden and Canada. Our approach is strongly interdisciplinary, with researchers spanning the fields of social and cultural history, literature and language, art history, museology, Latin studies, history of medicine and science, musicology and performance practice.

The Centre addresses big questions: to what extent are emotions universal? How, and to what extent, are they culturally conditioned and subject to historical change? What are the causes and consequences of major episodes of mass emotional experiences? How are emotions created and conveyed through the arts? How does Australia's emotional heritage influence today's social and cultural patterns?

These prestigious fellowships (with an additional \$16K pa research support) offer an exciting opportunity for innovative and enthusiastic scholars with demonstrated track records in medieval and/or early modern studies, and a capacity to engage in interdisciplinary research.

Organisation chart



Your role

The successful candidate will develop a project relating to the role of emotions on the theatrical stage in Britain and Ireland, from within the period 1300-1800.

In addition to publishing his or her own research in this area, the Fellow will collaborate in publications and be involved fully in the life of the Centre. The Fellow will also assist with the co-ordination of relevant symposia and engage in public outreach. There is an expectation that he or she will be involved in some Honours / postgraduate supervision or teaching, but this is primarily a research-only position.

Key responsibilities

- Develop and conduct research in Australian and overseas repositories into emotional understandings and behaviours in medieval and early modern Europe with reference to the area specified in the description.
- Present conference/symposium papers on the project findings at appropriate Australian and international forums.
- Contribute to interdisciplinary and collaborative workshops in the appropriate CHE Program(s). Supervise Honours students and assist in the supervision of Postgraduate research students where appropriate.
- Apply for external funding to support extra research activities.
- Engage in public outreach and activities of CHE.
- Publish academic papers and other scholarly outputs to a high international standard, and in accordance with the research expectations of The University of Western Australia.
- Contribute to Honours and graduate level teaching, as well as supervision of Honours or higher degree students.
- Attend meetings and undertake committee work within the national community of the ARC Centre of Excellence.
- Other duties as directed by the project supervisor.

Your specific work capabilities (selection criteria)

Essential

- A PhD in a relevant discipline in medieval or early modern studies
- A strong track record (relative to opportunity) in research and publication
- Basic familiarity with research trends in the history of emotions
- Demonstrated ability to engage in interdisciplinary research discussions
- Knowledge of the appropriate language(s) and linguistic skills required for successful completion of research
- Effective written and verbal communication skills
- Interpersonal skills which facilitate collaborative research
- Capacity to work with an academic research team and administrative staff

Desirable

- A willingness to supervise Honours students and assist in the supervision of Postgraduate level students.
- Ability in public speaking and community engagement
- Capacity to organise symposia and conferences
- Willingness to collaborate across disciplinary boundaries.
- Any particular skills or abilities specified for the individual position
- A commitment to the principles of equity and diversity.

Special Requirements

Applicants must provide a detailed application that addresses the position description and selection criteria; a curriculum vitae and a list of publications; and a 2-3 page description of the research project and its proposed outcomes. The research project description should develop a project relating to the role of emotions on the theatrical stage in Britain and Ireland, from within the period 1300-1800.