
Position Title:	Associate Professor, Translational Oncology
Position Classification:	Level D
Position Number:	317061
Faculty/Office:	Health & Medical Sciences
School/Division:	Biomedical Sciences
Centre/Section:	Cancer Biology
Supervisor Title:	Head of Division

About the University

Over 100 years ago, The University of Western Australia was founded with the aim of advancing the welfare and prosperity of its community.

UWA has risen to changing social and economic challenges, while achieving international standards, educating world-class graduates, producing ground breaking research and engaging in our community.

Delivering practical benefits to the community has always been at our core. We do this through the creation and sharing of knowledge, to foster a deeper understanding of our subject, ourselves and the world around us. That's because we believe that understanding is the key to a better future. Through understanding comes progress and through progress we can help create a better future for all.

UWA is already ranked in the top 1% of the world's universities, but our goal is to be recognised as in the world's top 50, for education as well as research.

The University of Western Australia has an international reputation for excellence and enterprise and has been rated as one of the best comprehensive universities in Australia. It is one of the country's leading research institutions as demonstrated by our Nobel Laureate and is the only WA member of the prestigious "Group of Eight" research universities.

The University is undergoing a period of transformational change to gain greater efficiencies, improve value, services and satisfaction. In this period of change the University remains focussed on being a world leader. The attraction and retention of the world's best employees is critical to achieving the University's strategic aim of being in the top 50 universities by 2050.

Vision and Values

The University of Western Australia vision is achieving international excellence.

Its core values underpinning our activities are a commitment to:

- A high performance culture designed to achieve international excellence
- Academic freedom to encourage staff and students to engage in the open exchange of ideas and thought
- Continuous improvement through self-examination and external review
- Fostering the values of openness, honesty, tolerance, fairness, trust and responsibility in social, moral and academic matters
- Transparency in decision making and accountability
- Equity and merit as the fundamental principles for the achievement of the full potential of all staff and students

All staff are expected to comply with the Code of Ethics and the University's Code of Conduct and demonstrate a commitment to its Equity and Diversity and Safety principles and the General Capabilities of personal effectiveness, working collaboratively and demonstrating a focus on results. Details of the University policies on these can be accessed at http://www.hr.uwa.edu.au/publications/code_of_ethics, <http://www.equity.uwa.edu.au> and <http://www.safety.uwa.edu.au/policies>.

Your work area

The School of Biomedical Sciences in the Faculty of Health and Medical Sciences at The University of Western Australia encompasses a range of biological, medical and health science-related fields.

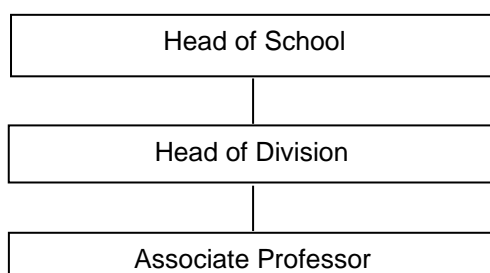
The School comprises six divisions, including Cancer Biology, Cardiovascular and Respiratory Health, Infection and Immunity, Genetics, Stem Cell Biology and Regenerative Medicine, and Pharmacology. The School is very active in teaching undergraduate Biomedical Science and Medical students, and has a large cohort of Honours and postgraduate research students.

The School enables researchers from diverse fields to conduct research on common themes from basic to applied health sciences. The School's research facilities include modern, well-equipped laboratories, shared equipment resources and core services. This is supported by centralised cutting-edge major infrastructure, analytical resources and animal facilities within the University and affiliated research institutes.

Researchers within the School have productive collaborations within the Faculty (i.e. academics in the Medical and Dental Schools, School of Allied Health and School of Population and Global Health) the University, research institutes, PathWest (the state public pathology service) and hospitals.. UWA is a founding member of the WA Health Translation Network, recognised as an Advanced Health Research and Translation Centre by the NHMRC. The School and Faculty have strong relationships nationally, internationally and within the broader research community.

This position of Associate Professor is in the Division of Cancer Biology. This is one of six Divisions in the School of Biomedical Sciences and has a major focus in applied and translational cancer research. The Division is active in further expanding its capability in blood-based cancer diagnostics for clinical adoption. This programme is being jointly performed in collaboration with the Medical and Dental Schools, and the affiliated research Institutes.

Organisation chart



Your role

Translational Oncology enables application of scientific discoveries into clinical practice with the aim of improving outcomes for patients with malignant diseases. The University of Western Australia is expanding its capability in this area, building upon its established capacity and expertise in cancer genetics and epigenetics, diagnostics and therapeutics. The Associate Professor will be responsible to the Head of Division, Cancer Biology and the Head of School Biomedical Sciences, and provide leadership in translational oncology and cancer teaching and research.

This is a research and teaching position in blood-based cancer diagnostics with a view to clinical application. Blood represents a rich source of information through which malignancies can be detected, monitored and matched to a specific therapy. We seek a highly skilled academic scientist to complement our existing team of cancer researchers. Our current areas of interest include circulating tumour cells, tumour-educated platelets, circulating cell-free DNA and tumour-derived exosome detection for both solid tumours and haematological malignancies. The successful candidate will be a talented cancer research scientist who will bring their own area of research specialisation in this field to the Faculty's innovative integrated programme of research and education in translational oncology. The appointee will collaborate with "discovery research" scientists, clinicians, bioinformaticians and industry.

The appointee will have national or international recognition in aspects of translating discoveries in cancer to clinical application. They will have expertise and experience in directing research projects, collaborating with others in a multidisciplinary setting, success in securing funding and possess a strong publication record in cancer research. They will contribute to the delivery and development of new and existing undergraduate and postgraduate education programmes in cancer and supervise PhD, Master and Honours students in cancer-related research projects. The incumbent will be expected to undertake

teaching, research and research supervision, contribute to the academic environment of the School and collaborate with other staff within the Faculty of Health and Medical Sciences and the wider WA cancer research community.

Key responsibilities

The individual appointed to this position will be expected to:

- Lead a programme of research in an area of blood-based cancer diagnostics.
- Participate in the development and delivery of undergraduate and postgraduate educational programmes in cancer research and translation, including the development of a Masters in Translational Oncology.
- Attract and supervise undergraduate and/or postgraduate dissertation and research thesis students, including Honours and PhD students.
- Lead excellent scholarly research, independently and/or in collaboration with others, both within and external to the School and University.
- Disseminate research findings via high quality/high impact publications, formal presentations to professional societies and bodies, and media/social media networks.
- Actively seek and attract, independently and/or in collaboration with others, research funding from external sources including national competitive grants and industry.
- Undertake administrative duties and service roles as required by the Head of School and contribute to the intellectual, social and academic environment of the Faculty and University.
- Participate in the School, Faculty and University meetings and committees as required by the Head of School.
- Work collaboratively within undergraduate and postgraduate teaching teams and support the University's commitment to equity and diversity principles.
- Undertake other duties as required.

Your specific work capabilities (selection criteria)

- PhD in a field of medical sciences
- Extensive experience and achievements in an area of cancer research
- Achievements in blood-based cancer diagnostics and / or monitoring
- National and international recognition in research
- Experience and success in supervising higher degree research students
- Ability to work effectively in a multidisciplinary research team and foster the research of others
- Outstanding leadership qualities, including research leadership
- Considerable experience in postgraduate education and training and with ability to develop new educational programmes
- Demonstrated ability to liaise and effectively communicate with relevant sections of the community, professional bodies, government departments and other external organisations
- Demonstrated ability to relate well to staff and students at all levels and evidence of a commitment to equity and diversity principles
- Evidence of high level interpersonal skills and excellent verbal and written communication skills