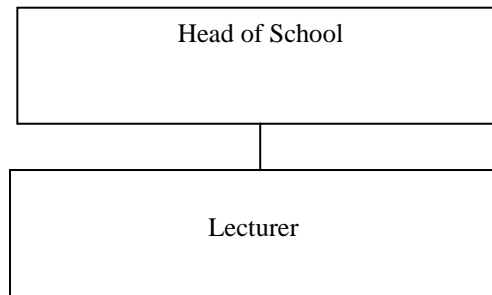


Your work area

The School of Population & Global Health (SPGH) in the Faculty of Health & Medical Sciences at The University of Western Australia is a research-intensive academic organisation giving material expression of the belief that excellence in research underpins excellence in education and community partnerships. The School has a reputation for an evidence based approach to research and education that influences policy and practice development. SPGH aspires to be a school in which staff and students feel valued and supported in their individual and collective efforts to improve community health and wellbeing.

Organisation chart



Your role

The Lecturer will be responsible to the Head of School of Population & Global Health to provide unit co-ordination, academic teaching, tutoring, administration, research student supervision and undertake research. The applicant must be motivated to teach, contribute to the academic environment of the School of Population & Global Health generally and develop a research portfolio.

Key responsibilities

The individual appointed to this position will be expected to:

- Participate in unit co-ordination and innovative face-to-face and online teaching in undergraduate and postgraduate health economics and related courses
- Contribute to supervision of undergraduate and/or postgraduate dissertation and research thesis students including PhD students.
- Conduct research and publication, independently and/or in collaboration with others, both within and external to School and University
- Actively seek and attract, independently and/or in collaboration with others, research funding from external sources.
- Undertake administrative duties and service roles as required by the Head of School
- Participate in the School, Faculty and University meetings and committees as required by the Head of School.
- Work collaboratively within undergraduate and postgraduate teaching teams and support the University's commitment to equity and diversity principles.
- Undertake other duties as required.

Your specific work capabilities (selection criteria)

- PhD in health economics or a related discipline
- Ability to supervise research students and staff.
- Demonstrated willingness to seek funding for research projects.
- Demonstrated ability to publish high quality scholarly health economics research papers
- Experience in teaching health economics and related areas at the undergraduate, postgraduate and/or professional levels

- Familiarity with flexible and innovative teaching methods
- Demonstrated ability to relate well to staff and students at all levels and evidence of a commitment to equity and diversity principles
- Evidence of high level interpersonal skills and verbal and written communication
- Evidence of administrative involvement and service contribution within an institution and in the wider public health or health economics community
- Demonstrated ability to liaise and effectively communicate with relevant sections of the community, professional bodies, government departments and other external organisations.