



---

|                                    |   |
|------------------------------------|---|
| <b>Position Title:</b>             | Senior Lecturer in Paediatric Dentistry |
| <b>Position Classification:</b>    | LVL C                                   |
| <b>Position Number:</b>            | 314533                                  |
| <b>Faculty/Office:</b>             | Faculty of Health and Medical Sciences  |
| <b>School /Section:</b>            | Dentistry                               |
| <b>Supervisor Title:</b>           | Dean and Head of School                 |
| <b>Supervisor Position Number:</b> | 303047                                  |

### About the University

Over 100 years ago, The University of Western Australia was founded with the aim of advancing the welfare and prosperity of its community.

UWA has risen to changing social and economic challenges, while achieving international standards, educating world-class graduates, producing ground breaking research and engaging in our community.

Delivering practical benefits to the community has always been at our core. We do this through the creation and sharing of knowledge, to foster a deeper understanding of our subject, ourselves and the world around us. That's because we believe that understanding is the key to a better future. Through understanding comes progress and through progress we can help create a better future for all.

UWA is already ranked in the top 1% of the world's universities, but our goal is to be recognised as one of the world's top 50, for education as well as research.

The University of Western Australia has an international reputation for excellence and enterprise and has been rated as one of the best comprehensive universities in Australia. It is one of the country's leading research institutions as demonstrated by our Nobel Laureate and is the only WA member of the prestigious "Group of Eight" research universities.

The University is undergoing a period of transformational change to gain greater efficiencies, improve value, services and satisfaction. In this period of change the University remains focussed on being a world leader. The attraction and retention of the world's best employees is critical to achieving the University's strategic aim of being in the top 50 universities by 2050.

### Vision and Values

The University of Western Australia vision is achieving international excellence.

Its core values underpinning our activities are a commitment to:

- A high performance culture designed to achieve international excellence
- Academic freedom to encourage staff and students to engage in the open exchange of ideas and thought
- Continuous improvement through self-examination and external review
- Fostering the values of openness, honesty, tolerance, fairness, trust and responsibility in social, moral and academic matters
- Transparency in decision making and accountability
- Equity and merit as the fundamental principles for the achievement of the full potential of all staff and students

All staff are expected to comply with the Code of Ethics and the University's Code of Conduct and demonstrate a commitment to its Equity and Diversity and Safety principles and the General Capabilities of personal effectiveness, working collaboratively and demonstrating a focus on results. Details of the University policies on these can be accessed at [http://www.hr.uwa.edu.au/publications/code\\_of\\_ethics](http://www.hr.uwa.edu.au/publications/code_of_ethics), <http://www.equity.uwa.edu.au> and <http://www.safety.uwa.edu.au/policies>.

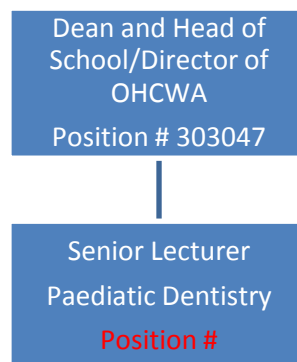
A Commencing Professional Development Review should be completed within six months of commencement please discuss with your supervisor who is responsible for undertaking the review.

## About the work area

The School of Dentistry is a contemporary, progressive, innovative and vibrant centre of excellence in dentistry. It is composed of three academic units and the Oral Health Centre of Western Australia (OHCWA). Our mission is to achieve excellence in dental education, research and oral health care to the benefit of our local community and the advancement of dentistry globally. This is achieved by highly qualified academics and staff, interacting with dedicated and engaged students, in state-of-the-art facilities, with up-to-date equipment and technology.

OHCWA is a partnership between The University of Western Australia and the Department of Health of Western Australia, and is the primary focus for oral health education, research and specialist care delivery in Western Australia. It treats approximately 15,000 patients a year and delivers a range of clinical and technical training programmes. OHCWA is located on the QEII campus adjacent to the new Perth Children's.

## Organisation chart



## Role statement

This position will serve as an active member of the Discipline of Paediatric Dentistry within the School, and will be responsible for the clinical and didactic teaching of DMD and DClinDent students, as well as undertaking research and clinical service in Paediatric Dentistry.

## Key responsibilities

- Contribute to the discipline in areas of education, research and clinical service delivery.
- Provide specialist clinical services.
- Participate in specialised instruction to graduate DMD and postgraduate DClinDent students.
- Participate in clinical/laboratory research relevant to the discipline.
- Participate in the development and implementation of the School's clinical management strategies and programs.
- Serve the School and Centre on relevant committees.
- Other duties as directed.

## Specific work capabilities (selection criteria)

The University is seeking an individual who can demonstrate their achievements in research, especially research relevant to the School's strategic research agenda, as measured by publications in refereed or professional journals, and citations of these publications, grant funding and supervision of research higher degree students, and who as a dental specialist can provide high level input into the School's graduate and postgraduate courses and programs.

Applicants should provide evidence of their achievements in each of the areas listed below.

## Qualifications

### Essential

- Advanced training to the level of a dental specialist
- Specialist dental qualification or equivalent registrable with the Dental Board of Australia.
- Completion of a PhD or equivalent research higher degree

#### Desirable

- Peer recognition in the form of fellowships from international academies and colleges, and/or invited presentations at international meetings.
- A Graduate Certificate in Higher Education or equivalent qualification in higher education

### **Experience**

#### Essential

- Current or recent clinical practice as a dental specialist
- Evidence of high level clinical capabilities and clinical scholarship, as witnessed by published clinical case reports or invited lectures on clinical topics to scientific meetings
- Demonstrated excellence in dental research. Evidence could include major highly cited peer reviewed publications, other citation metrics, competitive research grants, paid invitations to speak at major relevant research conferences, graduated research higher degree students developing into major academic roles or other similar evidence.
- A track record of successful collaboration with the dental or other relevant industry, such as through consultancies or grants.

#### Desirable

- Clinical experience across a range of settings in private, hospital and university environments
- High level supervision of administration, with course coordination in a dental school setting

### **Commitment to teaching and curriculum development**

#### Essential

- Initiate the development of new material in graduate and postgraduate courses
- Deliver high quality graduate and postgraduate courses
- Design and deliver continuing professional development programs for dental personnel.

#### Desirable

- Experience with a range of learning modes, including flexible delivery or student-centred modes
- Experience and involvement in continuing professional development

### **Achievements in research**

#### Essential

Applicants must be able to demonstrate -

- A national/international reputation for excellence in research
- A strong career trajectory for research output (i.e. based on H index and citation impact)
- A track record of publication in quality journals
- A track record of success in attracting external competitive research funding
- Past successful supervision of students
- Ability to work across discipline boundaries
- Ability to design and execute specific research projects
- Ability to lead a research team
- A collaborative research ethos

### **Personal Qualities**

#### Essential

The successful applicant will demonstrate the ability to -

- Pursue and achieve excellence
- Instigate and promote change in a strategic manner
- Foster the School's and Faculty's relations with industry, government departments, professional bodies and the wider community
- Share their ideas with others and follow them through to their completion
- Work within a dynamic team while valuing collegiality
- Initiate and promote a quality-oriented teaching and learning environment
- Lead and develop positive working relationships with other professionals
- Provide leadership by serving as an example for others
- Work in a flexible, multi-disciplinary teaching and research environment
- Contribute to the processes that enable the academic and support teams to manage the work of the School
- Communicate at a high level in both spoken and written forms

### **Special Requirements**

Travel between clinical facilities.

### **Position Approvals**

*Approvals are now electronic. No signature section needed.*