



Australian  
National  
University



INFORMATION FOR CANDIDATES  
FOR THE POSITION OF  
DIRECTOR  
CRAWFORD SCHOOL OF PUBLIC POLICY

Closing date: Wednesday 30 September 2015

# CONTENTS

<b>ANU College of Asia &amp; the Pacific</b>	<b>3</b>
Overview	3
College Academic Structure	3
Research strengths	4
Education strengths	5
Educational offerings	5
<b>Crawford School of Public Policy</b>	<b>6</b>
Overview	6
<b>The role</b>	<b>7</b>
The role of the Director, Crawford School of Public Policy	7
Selection criteria	8
<b>Selection committee</b>	<b>9</b>
How to apply	10
<b>The Australian National University</b>	<b>11</b>
Overview	11
University Colleges	13
Governance	15
<b>Conditions of employment</b>	<b>16</b>
Remuneration and benefits	16
Relocation support	16
<b>Further information</b>	<b>17</b>
<b>Contact us</b>	<b>18</b>

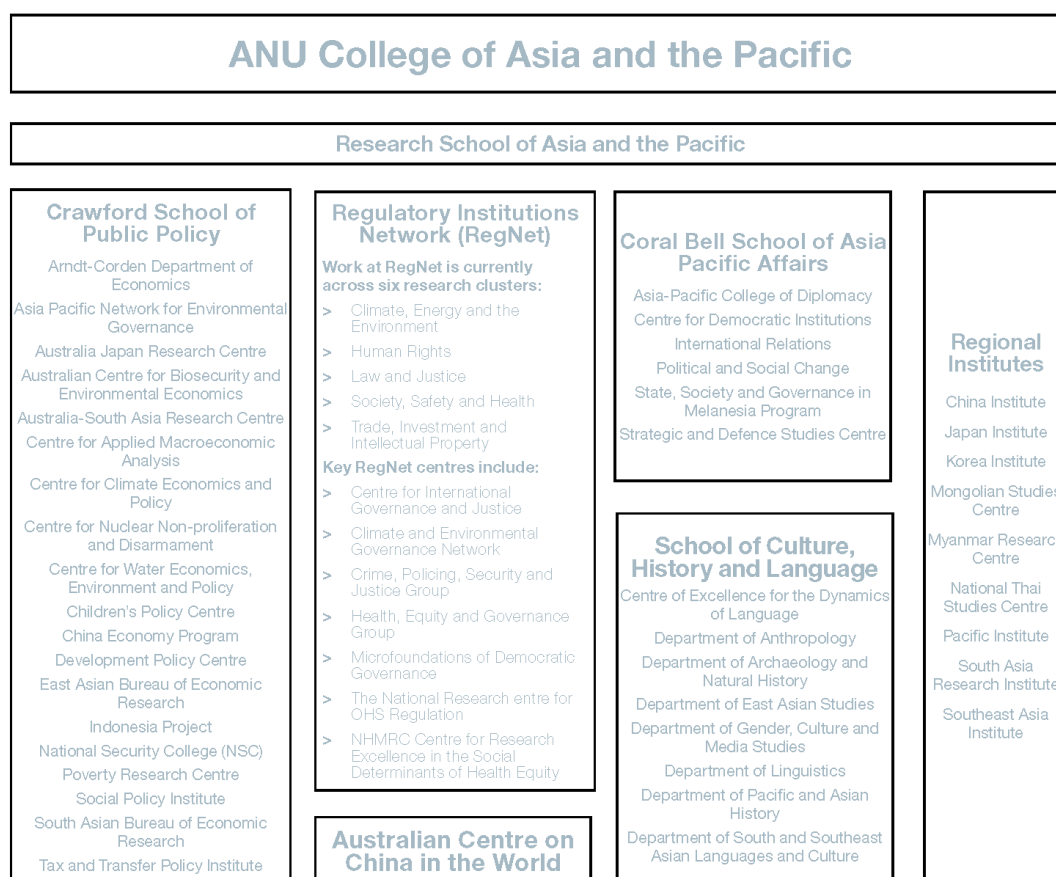
# ANU COLLEGE OF ASIA & THE PACIFIC

## Overview

A defining feature of ANU is our strong focus on Asia and the Pacific. The University's strategic plan, ANU by 2020, aims to continue to increase our focus on Asia and the Pacific. The ANU College of Asia and the Pacific (CAP) hosts the largest number of regional experts and specialist academic programs in a major research university in the English-speaking world. The College plays a vital role in informing public policy and shaping Australia's intellectual engagement with the societies, cultures and economies of Asia and the Pacific. The mission of the College is to lead intellectual engagement with Asia and the Pacific through research, teaching and contributions to public debate.

The College comprises three Schools and two Centres: the Coral Bell School of Asia Pacific Affairs (Bell School); the School of Culture, History & Language (CHL); the Crawford School of Public Policy (Crawford); the Regulatory Institutions Network (RegNet); and the Australian Centre on China in the World (CIW).

## College Academic Structure



## Research Strengths

Outstanding research is central to the pursuit of the College's vision and the continued fulfilment of its mission. CAP has great strengths in a number of geographic areas. It has the largest clusters of researchers in the English-speaking world focused on the Pacific (PNG and the island states), Indonesia, Japan and China. In these four areas we are world leaders. Additionally, we have sizable and distinguished clusters of scholars working on Australia and its interaction with the region, and, reciprocally, working on global issues and the interaction between global and regional level variables.

Unlike the great majority of other geographically-dedicated academic units around the world, CAP has preserved a strong commitment to academic disciplines. Our largest disciplinary strengths are in political science, economics, history, gender studies, anthropology, law, archaeology and linguistics. In all of these fields we excel and enjoy global renown for combining disciplinary strength with geographic focus. Inter-disciplinary research on particular themes is also important to the College. Among the largest and most highly reputed cross-disciplinary research themes in CAP are: environmental & resource management; culture & identity; and regulation and governance.

Given our research focus on the Asia-Pacific region, CAP has a wide range of partnerships (formal and informal) with institutions in the region, as well as with other international institutions that share our interest in the region. As of 2015 the College has partnership agreements with institutions in over 29 countries. Business partnerships that foster regional understanding are a feature of the College as well – for instance, the Rio Tinto-ANU China Partnership is a model of cooperation between industry and university in the development of Australia's intellectual and business capacities on China.



# ANU COLLEGE OF ASIA & THE PACIFIC

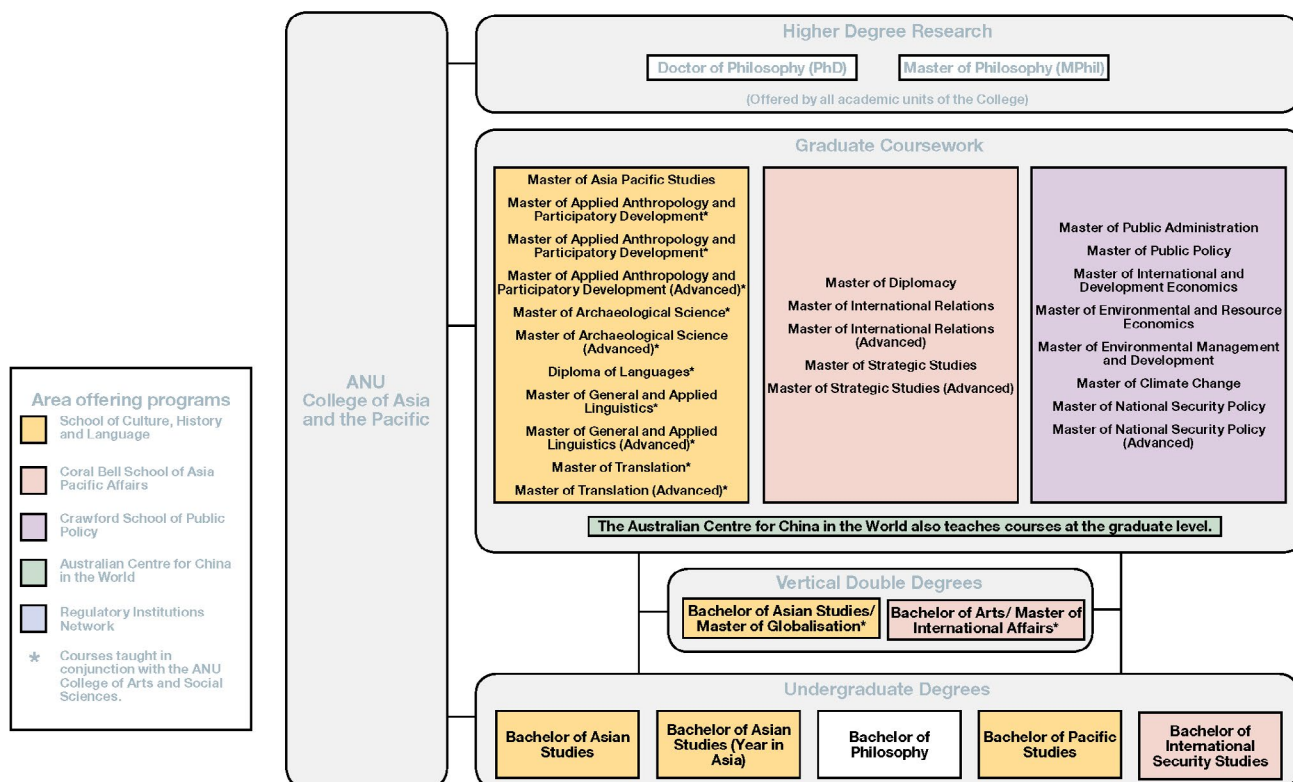
## Education Strengths

The College of Asia and the Pacific has a strong postgraduate profile and a select base of undergraduate students. CAP has enrolled over 300 higher degree by research (HDR) students in 2013. As one of the world's leading centres of research on Asia and the Pacific the College offers HDR students access to research supervision by acknowledged experts in their fields.

Research students in CAP can undertake either a PhD or MPhil degree drawing on a broad range of disciplines across the entire Asia Pacific region. The College also enrolls over 800 postgraduate coursework students annually, taking a range of masters, Graduate diploma or Graduate Certificate programs in areas as diverse as: archaeological Science; Applied Anthropology & Participatory Development; Environmental & Resource Economics; International Affairs; International Trade & Economic Relations; Peace & Conflict Studies; Public Policy; and Strategic Affairs.

The undergraduate programs offered by the College are specialist programs where teaching is arranged around two primary goals: learning a language of the region, and understanding the context of Asia and the Pacific - its' relationship to Australia, and the region's place in a globalised world. The College provides a curriculum that is strongly oriented to the languages, cultures, societies, economies, political systems and international institutions of the region. The College has a particular national responsibility for preserving and extending language training in Asian and Pacific languages in Australia. While students enrolling in 'large enrolment' languages (Chinese and Japanese) must meet normal entry requirements for their chosen program, there are also alternative study paths for students wishing to study 'small enrolment' languages such as Javanese, Sanskrit, Tetum, Thai or Vietnamese. The College has a strong 'Year-in-Asia' program, with students spending a year at an Asian institution, typically after two years of undergraduate study.

## EDUCATIONAL OFFERINGS





# CRAWFORD SCHOOL OF PUBLIC POLICY

## Overview

The Crawford School of Public Policy (Crawford School) leads research and debate on public policy in Australia and the Asia-Pacific region. It aims to be one of the world's great public policy schools.

The Crawford School is the flagship for the ANU's campus-wide commitment to improving the quality of public policy debate and outcomes within Australia and its region. Located within the College of Asia and the Pacific, the Crawford School both contributes to, and leverages, strong and long-standing relationships with its distinguished policy-maker alumni and with partner institutions in Asia and the Pacific.

The Crawford School houses innovative policy networks, including the H.C. Coombs Policy Forum, the Asia Pacific Public Policy Society, the Asia and the Pacific Policy Studies Journal and PolicyForum.net. It hosts the annual Crawford Australian Leadership Forum, an invitation event for 150 of the country's top leaders – from business, the public sector and research community – together with prominent international invitees, to address the major national, regional and global public policy issues facing Australian policy-makers.

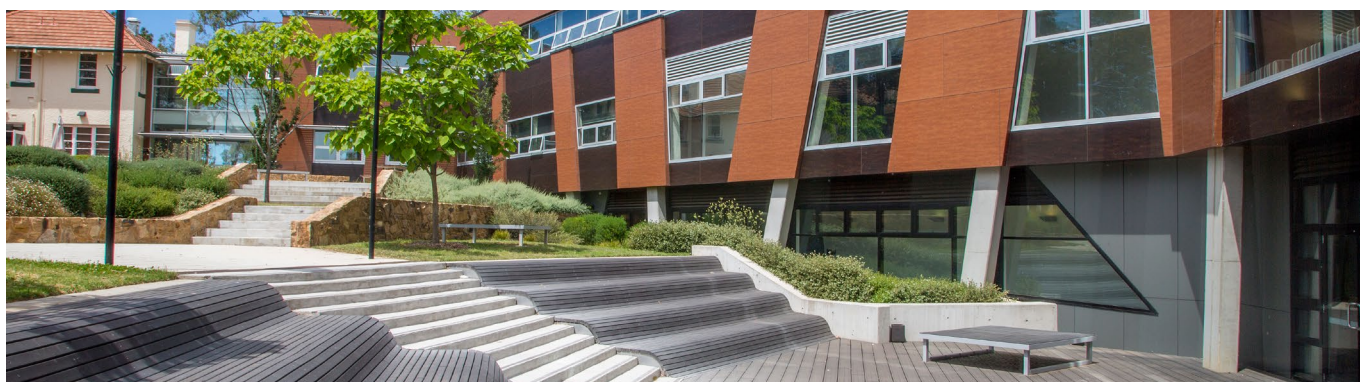
The Crawford School is distinguished by its genuine inter-disciplinary approach to policy studies, with outstanding scholarship in fields ranging from political science and economics to demography and human geography. The interdisciplinary nature of the School is reflected in its Social Policy Institute, and the Development Policy Centre. In 2010 the Australian government chose the Crawford School as the location for establishing Australia's National Security College, a specialised graduate and professional development program focused on national and international security policy questions.

The Crawford School has a celebrated history as a world-leading centre for applied and development economics, focusing on Australia, China, Japan, Indonesia, South East Asia, South Asia and the Pacific. Today this work underpins its Centre for Applied Macroeconomic Analysis, the Arndt-Corden Department of Economics, the Centre for Water, Economics and Environmental Policy, the Tax and Transfer Policy Institute, and the Australian Centre for Biosecurity and Environmental Economics.

Crawford School scholars are distinguished by the quality of their evidence-based research and analysis on local, regional and global policy issues that matter to Australia and the Asia-Pacific region. They engage in world-leading transdisciplinary work that embraces fields including climate and environmental management and policy; demography; natural resources; trade and investment; governance; human geography; political economy and regulation. Scholars across all of Crawford's research and teaching clusters address multiple audiences: international organizations, governments, the private sector, the non-profit sector, indigenous Australia, outstanding domestic and international graduate students, and the many public sector agencies that are the School's strategic partners.

ANU ranks as one of the world's most international universities by staff diversity, and within ANU, the Crawford School has one of the most diverse student bodies. It is well known throughout the Asia and Pacific region for its staff commitment to providing an outstanding educational and research environment for students from around the world. Several hundred students from Australia, the region, and other parts of the world study for Masters degrees in economics, public policy and environmental management at the Crawford School. The teaching is research-led and oriented toward professional practice. Many Crawford School students take time out from their positions in government, business and civil society to take their careers to the next level.

The School is named for former ANU Chancellor Sir John Crawford – a celebrated Australian economist and policy maker, who was also an institution-builder. Crawford scholars are both theoretically sophisticated and focus on public policy research and teaching intended to bring about positive change, locally and internationally.



# THE ROLE

## The role of the Director, Crawford School of Public Policy

### Purpose Statement

The ANU College of Asia and the Pacific leads intellectual engagement with the Asia-Pacific region through research, teaching and contributions to public policy, and seeks to set the international standard for scholarship concerning the region. The Director, Crawford School of Public Policy, is responsible for enabling academic staff to achieve research, educational and public engagement outcomes for the School in line with the strategic goals of the College, and the ANU 2020 strategic plan. Building the Crawford School's policy research profile, operational scope and budget capacity is a key goal for the next phase of its institutional development.

### Position Dimension & Relationships

The Director's responsibilities include leadership, strategic planning, public policy outreach, and partnership with multiple stakeholders within and outside the university. The Director provides effective management of the academic, educational, financial, physical and staff resources of the School. While leading the School's management group, the Director will also be part of the executive leadership group of the ANU College of Asia and the Pacific.

### Role Statement

The Director of the Crawford School of Public Policy is responsible to the Dean, ANU College of Asia and the Pacific, for overall research and educational leadership in the School, consistent with the strategic plan of the College and the ANU strategic plan. Crawford's extensive public profile and partnerships with government also mean that the Director will at times work closely with the Vice Chancellor, Chancellor and members of the university Executive.

The Director will have primary responsibility for:

- > Leading strategic planning with Crawford School staff, students and stakeholders to articulate a shared vision of the unique qualities of the School within a university committed to excellence in public policy research and outreach.
- > Positioning the Crawford School for its next decade of development and innovation.
- > Ensuring that the research environment at the School is designed to support world-class research performance across multiple disciplines.
- > Maintaining and enhancing optimal research performance across all parts of the School, through publication in globally esteemed outlets, successful competition in competitive grant programs, and innovation through national and international research collaborations and consultancies.
- > Supporting and promoting a culture of research-led graduate and doctoral education, based on pedagogical excellence.
- > Building and strengthening relationships with public and private stakeholders throughout Australia and the Asia Pacific region to further enhance the national and international profile of the Crawford School and the College of Asia and the Pacific.
- > Enhancing the quality and diversity of the School's student body.
- > Refining the School's business model to ensure resilience through domestic and international economic and policy cycles.
- > Supporting the College Dean and Executive in the development and delivery of key policies to implement the College's education, research, outreach and internationalization policies.
- > Playing a leading role in contributing to College and university-wide strategic directions and planning in the public policy and research impact portfolio.

# THE ROLE

## Selection criteria

1. An international profile as a distinguished academic or policy-maker with outstanding scholarly credentials. A PhD or equivalent qualification in a discipline such as economics, environment, international relations, politics, public administration, regulation, security or sociology.
2. Demonstrated institutional leadership in a university or public organisation and an international reputation for scholarship that is appropriate to provide strategic and academic leadership as well as highly developed interpersonal skills with the ability to work with, and to lead teams in a collegial fashion.
3. Demonstrated capacity for innovation and collaboration necessary to lead a world-class public policy school within a university-wide environment of public policy engagement.
4. A proven ability to enhance and develop the international reputation and performance of educational and research institutions, and an outstanding personal track record in delivery of high quality research, graduate teaching and doctoral training.
5. Demonstrated ability to cultivate and manage personal and institutional relationships with a wide range of political, corporate, educational, civil society stakeholders, both locally and internationally as well as a record of effective communication and the ability to influence a broad range of stakeholders in order to secure strategic outcomes.
6. Demonstrated experience and expertise in the provision of strategic planning, management and leadership skills within a high profile academic environment, including management of large-scale university research and educational programs.
7. Familiarity with building and managing university budgets and programs that compete in a global market.
8. Demonstrated achievement in relation to incorporation of EO principles into strategic planning and the capacity to accept devolved responsibility for the achievement of equity and diversity.





# SELECTION COMMITTEE

**The members of the Selection Committee are:**

## **Chair**

**Professor Ian Young**

Vice-Chancellor, University Executive

## **Members**

**Professor Margaret Harding**

Deputy Vice-Chancellor (Research), University Executive

**Professor Veronica Taylor**

Dean, ANU College of Asia and the Pacific

**Professor Michael Wesley**

Director, Coral Bell School of Asia Pacific Affairs

**Dr Frank Jotzo**

Deputy Director, Crawford School of Public Policy

**Professor Kaarin Anstey**

Director, Centre on Ageing Health and Wellbeing

**Dr Heather Smith**

Deputy Secretary, Department of Prime Minister and Cabinet



# SELECTION COMMITTEE

## How to apply

For applications to be accepted they must contain:

- > A full Curriculum Vitae
- > A response to the Selection Criteria
- > A Statement of Claim
- > Referee details, and
- > Availability.

**Applications close on Wednesday 30 September 2015**

### Curriculum Vitae

- > Details of education, professional training and qualifications
- > Positions held, including relevant dates, titles, reporting lines, responsibilities and key achievements
- > Any other relevant information such as contributions to professional associations and community activities
- > Current salary package and component parts.

### Response to Selection Criteria

- > Candidates are required to respond to each of the selection criteria, taking into account experience, past roles and expertise. Approximately no more than four to five pages in length, in total.

### Statement of Claim

- > In addition to the selection criteria, in no more than two pages outline your vision for this role, the processes you would use for implementing that vision and how the Dean, ANU College of Asia and the Pacific, would assess whether you had been successful.

### Referees

Applicants must provide full contact details for three referees who have agreed to supply confidential references if requested by the University.

- > Candidates should state their relationship to the referees and why they have been nominated to speak on the candidate's behalf,
- > Referees will only be contacted after consultation with the candidate, and
- > It is the candidate's responsibility to ensure referees are willing to provide reports when contacted.

The University reserves the right to seek reports on the suitability of candidates from experts in the field, other than those nominated by the candidate.

Should a candidate not wish a specific person or persons to be contacted, please advise at the time of application.

### Availability

- > Candidates are asked to provide an indication of the earliest date on which they would be available to commence duties at the University.
- > Applicants should provide a confidential email address and suitable daytime and evening telephone contact details (including mobile) as well as details of availability during this period.

### Anticipated Timeframes

- > Applications close: Wednesday 30 September 2015
- > Shortlisting of candidates: Week commencing 5 October 2015
- > Interviews and public seminar: Week commencing 26 October 2015.

The University reserves the right to invite applications and/or to not make an appointment.

**For a confidential discussion, please contact:**

Professor Ian Young T: +61 (2) 6125 2510  
E: [vc@anu.edu.au](mailto:vc@anu.edu.au)

# THE AUSTRALIAN NATIONAL UNIVERSITY

## Overview

The Australian National University (ANU) is one of the world's foremost research universities. Distinguished by its relentless pursuit of excellence, ANU attracts leading academics and outstanding students from Australia and around the world.

## History

ANU was established by the Commonwealth Parliament in 1946 specifically to lead the development of the intellectual capacity of the nation through research and research training in line with the best international standards. It is the only Australian university established by a Commonwealth Act of Parliament. In 1960, ANU accepted responsibility for undergraduate education along with an expectation that the highest standards of education would be achieved.

## ANU by 2020

ANU has a distinct national mission and unique concentrations of excellence. Its new strategic plan, *ANU by 2020*, emphasises the University's role as Australia's national university, and Australia's finest university. The plan sets ambitious goals for research, education and public policy.

## Partnerships

ANU has strong links with leading research institutions in Australia and overseas. It is a founding member of the International Alliance of Research Universities, a co-operative network of 10 eminent international research-intensive universities which includes:

- > University of Cambridge
- > University of Oxford
- > University of California, Berkeley
- > Yale University
- > Peking University
- > National University of Singapore
- > University of Tokyo
- > University of Copenhagen
- > ETH Zurich.

## Research-intensive education

As the specially-chartered national university, ANU conducts research at the highest levels in all of its colleges, and offers a unique research-led education to undergraduate and postgraduate students as well as postdoctoral fellows.

ANU advances the national intellectual and creative capacity in three key ways:

1. Through broad-based research and research-intensive education in the disciplines fundamental to all knowledge: the humanities, the sciences and the social sciences,
2. By supporting research and research-intensive education in a spectrum of professional disciplines, and
3. By studying Australia in its various contexts.

It is the aim of the University to achieve its objectives by creating an inspirational working environment for all its staff, students and visitors.

In each of its endeavours, ANU strives to achieve at the levels of the world's great universities.

## Scale

ANU has 4,300 staff, 10,286 undergraduates and 6,925 postgraduate students. Its annual revenue exceeds \$1.0 billion and consolidated assets are worth \$2.5 billion.

## Location

The University campus has over 200 buildings and occupies 145 hectares adjacent to the city centre of Canberra.

The University also has a number of smaller campuses:

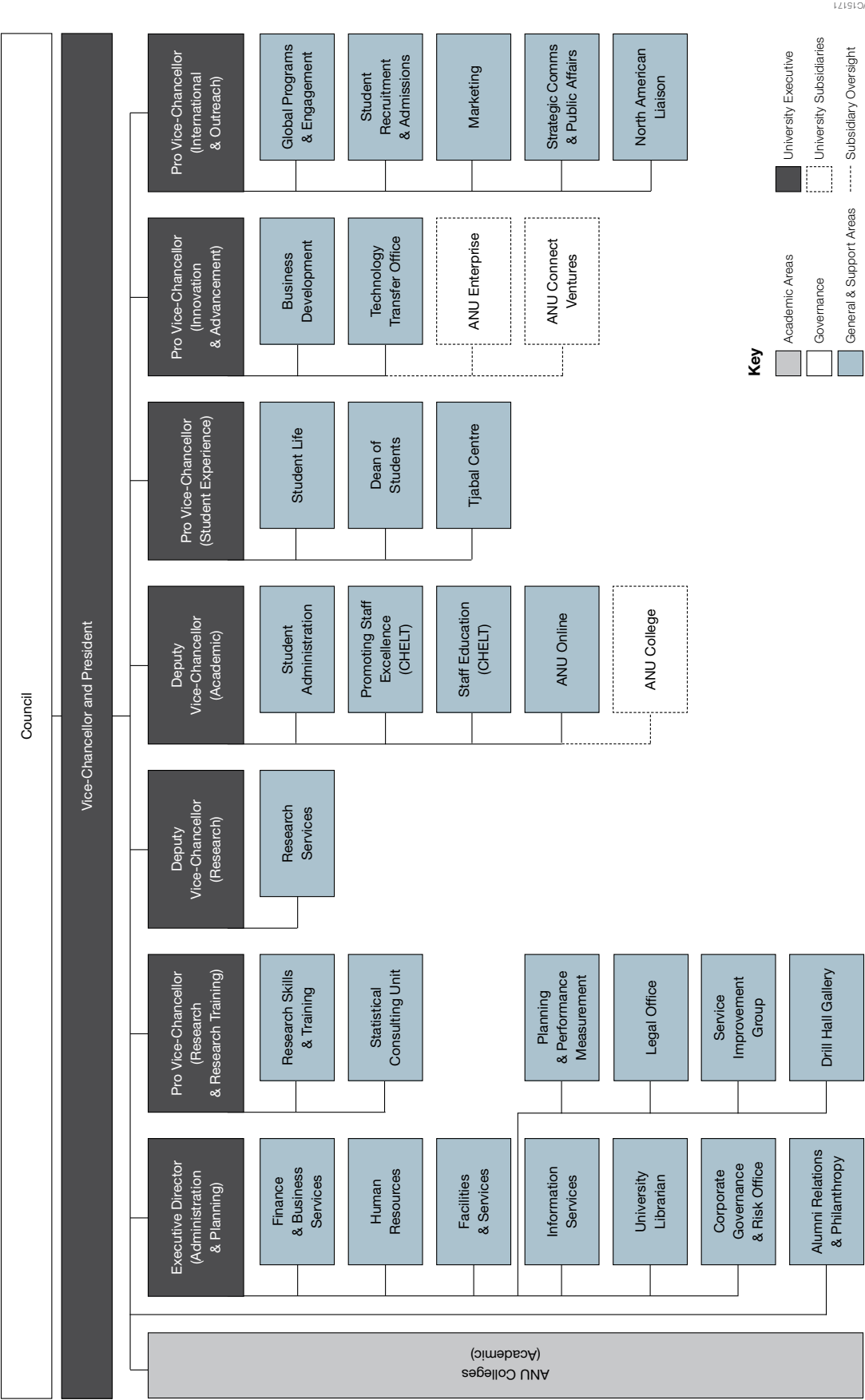
- > Mt Stromlo Observatory (west of Canberra)
- > Siding Spring Observatory (near Coonabarabran, western New South Wales)
- > North Australia Research Unit (Darwin, Northern Territory)
- > Kioloa (coastal campus near Bawley Point, on the New South Wales South Coast)
- > ANU Medical School - The Canberra Hospital campus
- > ANU Medical School - Calvary Hospital campus
- > Health Facilities in South East New South Wales.

Further information about ANU can be found at:

**[anu.edu.au/about](http://anu.edu.au/about)**

THE AUSTRALIAN NATIONAL UNIVERSITY

**ANU Executive Structure**



MO\_OVC15171

# THE AUSTRALIAN NATIONAL UNIVERSITY

## University Colleges

ANU has seven colleges, each made up of the research and education schools and centres that contribute to the various broad disciplines.

The ANU Colleges link research and teaching at undergraduate, postgraduate and higher degree levels. They undertake world-class research, and provide education programs at the highest standards. The University recognises the need to strengthen strategic planning, align administrative support with these plans and ensure consistency of policy and procedure. The aim of the college structure is to promote and formalise cooperation among the different contributors to disciplines in ANU and to remove barriers in their path.

[anu.edu.au](http://anu.edu.au)

### ANU College of Asia & the Pacific

The ANU College of Asia and the Pacific (CAP) comprises the Crawford School of Public Policy; the School of Culture, History and Language; the Coral Bell School of Asia Pacific Affairs; the Regulatory Institutions Network Centre; and the Australian Centre on China in the World. Dedicated to outstanding research and education, the College is a centre for Australia's intellectual engagement and scholarly dialogue with the societies, economies and cultures of Asia and the Pacific.

[asiapacific.anu.edu.au](http://asiapacific.anu.edu.au)

### ANU College of Arts & Social Sciences

The ANU College of Arts and Social Sciences (CASS) is the research and education college for the broad disciplines of the creative arts, humanities and the social sciences. The College has two research schools; the Research School of Social Sciences; and the Research School of Humanities and the Arts. The Australian Demographic and Social Research Institute is now incorporated into the Research School of Social Sciences.

[cass.anu.edu.au](http://cass.anu.edu.au)

### ANU College of Business & Economics

The ANU College of Business and Economics (CBE) seeks to advance knowledge through high quality teaching and research in the closely related areas of accounting, actuarial studies, business information systems, econometrics, economic history, economics, finance, international business, management, marketing and statistics. It endeavours to do this through the provision of a range of undergraduate and graduate programs, and through its research, publications and contributions to the associated professions, commerce, industry and government.

[cbe.anu.edu.au](http://cbe.anu.edu.au)

### ANU College of Engineering & Computer Science

The ANU College of Engineering and Computer Science (CECS) comprises the Research School of Engineering and the Research School of Computer Science. It offers undergraduate degrees in engineering, information technology and computer science along with masters and doctoral postgraduate programs. The College undertakes basic and applied research in information and communications technologies, materials and manufacturing, formal methods and logic, machine learning and vision, robotics and energy systems.

[cecs.anu.edu.au](http://cecs.anu.edu.au)

### ANU College of Law

The ANU College of Law (CoL) is Australia's national law school, committed to legal education and research at the highest level, and to striving for continuous improvement in the law for the benefit of national and international communities. The College offers LLB and LLB (Graduate) degrees, a Graduate Diploma in Legal Practice through the Legal Workshop, and postgraduate research and coursework degrees.

[law.anu.edu.au](http://law.anu.edu.au)

### ANU College of Medicine, Biology & Environment

The ANU College of Medicine, Biology and Environment (CMBE) brings together biological, clinical, population health and environmental sciences in five schools: The John Curtin School of Medical Research, the Research School of Biology, the Research School of Psychology, the Research School of Population Health and the Fenner School of Environment and Society.

[cmbe.anu.edu.au](http://cmbe.anu.edu.au)



# THE AUSTRALIAN NATIONAL UNIVERSITY

## ANU College of Physical & Mathematical Sciences

The ANU College of Physical and Mathematical Sciences (CPMS) comprises the Research Schools of Astronomy and Astrophysics, Chemistry, Earth Sciences, Physics and Engineering, and the Mathematical Sciences Institute. The College integrates high level research and educational excellence.

[cpms.anu.edu.au](http://cpms.anu.edu.au)

## ANU Public Policy

In 2010 ANU received Commonwealth Government funding for the following national policy centres:

- > Australian National Institute for Public Policy
- > Australian Centre on China in the World
- > National Security College
- > H.C. Coombs Public Policy Forum.



# THE AUSTRALIAN NATIONAL UNIVERSITY

## Governance

### Council and committees

The University is governed by a 15-member Council under the Australian National University Act 1991 and is chaired by the ANU Chancellor. There are a number of Committees of Council including the Academic Board, the Finance Committee, the Audit and Risk Management Committee, and the Honorary Degrees Committee. Other significant University committees include the Education Committee and the Research Committee.

[anu.edu.au/about/governance](http://anu.edu.au/about/governance)

### Legislation

ANU is governed by the  
*Australian National University Act 1991*.

[anu.edu.au/governance/legislation](http://anu.edu.au/governance/legislation)

### Audit

Council also has an Audit and Risk Management Committee of five members that oversees audit functions, both internal and external, of the University in line with the *Commonwealth Authorities and Companies Act 1997*.

[anu.edu.au/audit-risk-management-committee](http://anu.edu.au/audit-risk-management-committee)

### Office of the Vice-Chancellor

The Vice-Chancellor and President of The Australian National University is the Chief Executive Officer of the University and is responsible for the management of the affairs and concerns of the University.

[anu.edu.au/university-executive](http://anu.edu.au/university-executive)





# CONDITIONS OF EMPLOYMENT

## Remuneration and benefits

An attractive remuneration package with conditions commensurate with the role will be negotiated with the preferred candidate.

## Relocation support

The University will provide generous relocation support to the successful candidate, if the successful candidate is relocating from interstate or overseas.



## FURTHER INFORMATION

Further information about the ANU, including handbooks and other publications, can be found at the ANU website.

Other documents candidates might wish to read include:

### **ANU by 2020**

[about.anu.edu.au/strategy-reviews/anu2020](http://about.anu.edu.au/strategy-reviews/anu2020)

### **2014 ANU Annual Report**

[anu.edu.au/annual-report-2014](http://anu.edu.au/annual-report-2014)

### **ANU Reconciliation Action Plan**

[anu.edu.au/reconciliation-action-plan](http://anu.edu.au/reconciliation-action-plan)

### **Canberra Your Future**

[canberrayourfuture.com.au](http://canberrayourfuture.com.au)

### **Planning and Performance Measurement**

[unistats.anu.edu.au](http://unistats.anu.edu.au)

### **Finance and Business Services**

[fbs.anu.edu.au](http://fbs.anu.edu.au)





# CONTACT US



## ANU Search

Callum Mann

T: +61 (2) 6125 3963

E: [ANU.Search@anu.edu.au](mailto:ANU.Search@anu.edu.au)