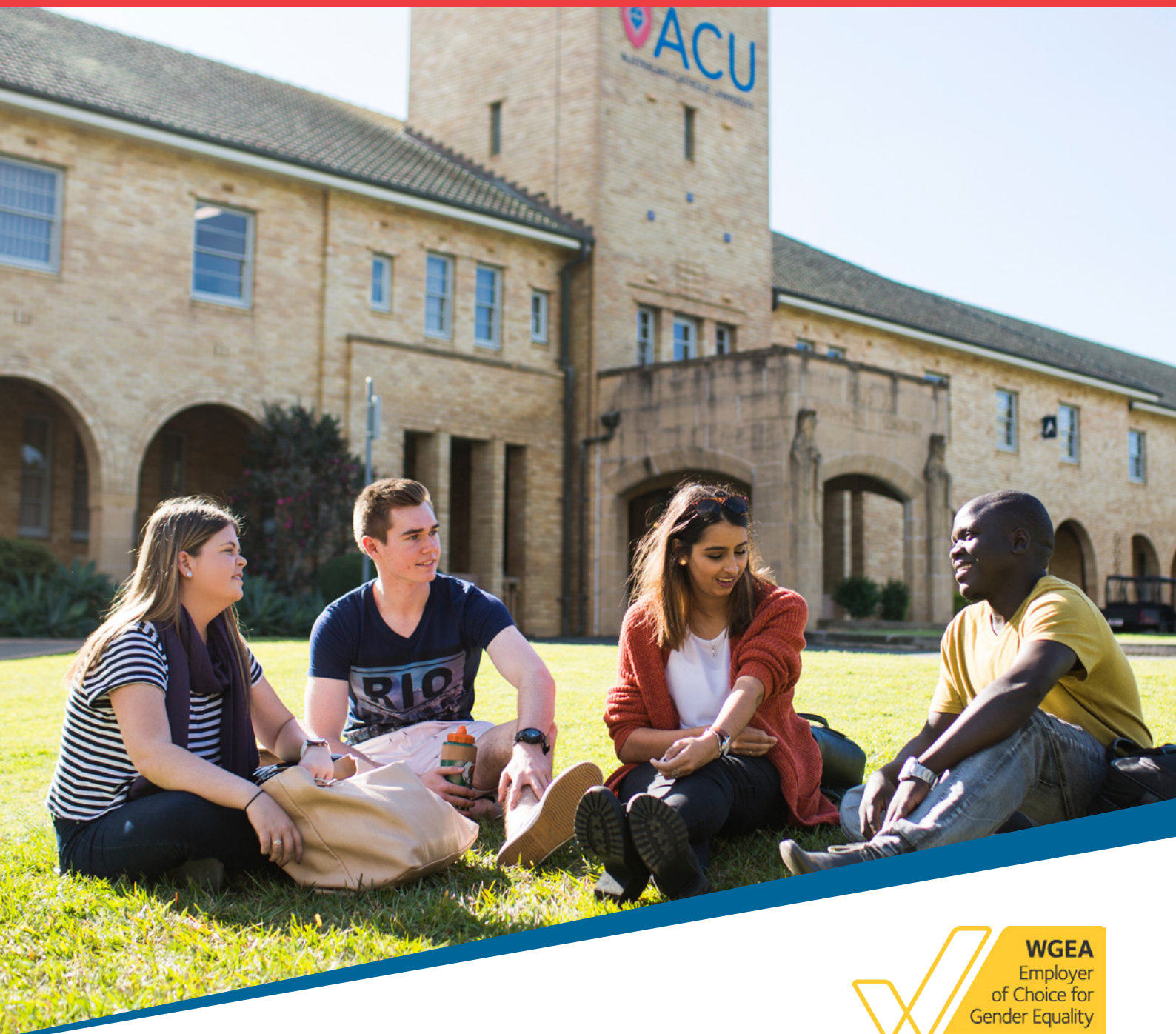


**STATE HEAD (NSW/ACT)
NATIONAL SCHOOL OF EDUCATION
INFORMATION PACK**



CONTENTS

About Australian Catholic University	02
Mission, Vision & Values	03
University Governance	04
University Structure	04
ACU Organisational Chart	05
About Faculty of Education and Arts	06
Faculty of Education and Arts Organisational Chart	07
About the Position	08
Selection Criteria	09
Leadership Competency Framework	09
Salary and Benefits	10
Campus Information	11



ABOUT AUSTRALIAN CATHOLIC UNIVERSITY (ACU)

A public Catholic university, funded by the Australian Government, Australian Catholic University is open to students and staff of all beliefs. Building on its origins of service to the Catholic and wider Australian communities over a period of 150 years, the University seeks to foster and promote teaching and learning, research and scholarship, and community engagement in accordance with the Catholic tradition. It is dedicated to rigorous intellectual pursuits and the individual's pursuit of truth and academic freedom. The University's ethos reflects Christian values and its core concerns are with ethics and morals in all fields of its endeavour.

Australian Catholic University is a national university with seven campuses in Australia (Brisbane, Sydney [North Sydney and Strathfield], Canberra, Adelaide, Melbourne and Ballarat) and off-campus activity throughout Australia, as well as overseas.

The University has four Faculties - Education and Arts, Law and Business, Health Sciences and Theology and Philosophy.

Graduates consistently give a high rating of their educational experience at Australian Catholic University and it has a reputation for quality and innovative teaching in the context of a personalised learning environment and for highly qualified academic staff with a commitment to

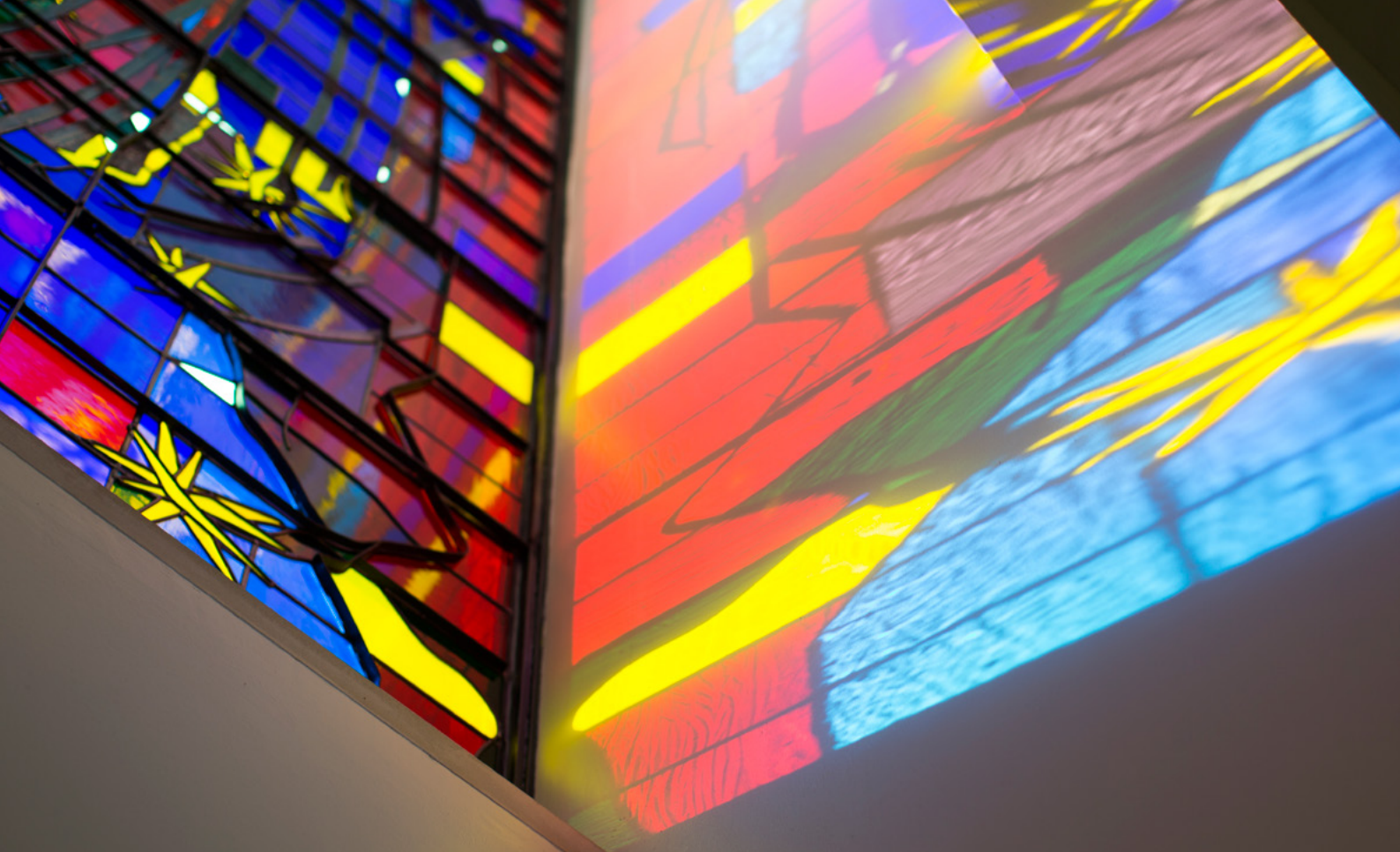
student-centred learning. The University has one of the highest graduate employment rates in the country and its graduates are high achievers in education, health, commerce, the humanities, science, technology and the creative arts.

The University has over 30,000 students and more than 2,000 staff.

The University pursues performance excellence and offers an environment where staff are valued and rewarded. Staff are expected to demonstrate a commitment to continuous improvement and to participate fully in resolving issues to achieve and maintain quality standards relevant to role.

Further Information

Visit www.acu.edu.au



MISSION, VISION AND VALUES

OUR MISSION

Within the Catholic intellectual tradition and acting in Truth and Love, Australian Catholic University is committed to the pursuit of knowledge, the dignity of the human person and the common good.

OUR VISION

Australian Catholic University is one of the leading Catholic universities in the world and is one of the principal intellectual assets of the Church in Australia. The University exercises nationwide leadership in the key focus areas of Health, Education, Theology and Philosophy, and Social Justice. Guided by the principles of Catholic social teaching, our students, staff and graduates will be influential in bringing about changes in the communities we live in.

CORE VALUES

ACU is founded on a long history of commitment to truth, academic excellence and service, all within the Catholic intellectual tradition. These values are the principles behind all our actions and guide us in living out our Mission and realising our Vision:

Truth

ACU is committed to the lifelong pursuit of knowledge, freely seeking truth through research, critical inquiry and active discovery. The University shares this pursuit through teaching, scholarship and engagement, contributing to the growth and betterment of society.

Academic Excellence

ACU, through its pursuit of excellence in teaching and research strives to produce the highest quality intellectual, educational and learning experiences through innovation and creativity.

Service

ACU is a University of Service. It seeks to serve the wider community through research, education and engagement, especially by providing opportunities for those in need and by educating its students to be socially and morally responsible persons.

ACU pursues all its core values within the Catholic intellectual tradition. The University is committed to serving the common good and upholding the sacredness in life. We respect and welcome all faith traditions and uphold the dignity of all human persons.



UNIVERSITY GOVERNANCE

The governing body is the Senate which consists of:

- Two persons (Chancellor and Vice-Chancellor and President) who are members ex-officio
- The Pro-Chancellor
- Eight persons elected by the members of the Company having regard (among other things) to the need for broad community involvement
- Three persons elected by and from the academic staff of the University
- One person elected by and from the general staff of the University
- One student of the University.
- The Academic Board is constituted by the Senate to administer and implement academic policies.
- The University has also established four Chapters, based in the communities it serves. These provide advice to the Senate on local needs and demands, and serve as important links to community interests.

UNIVERSITY STRUCTURE

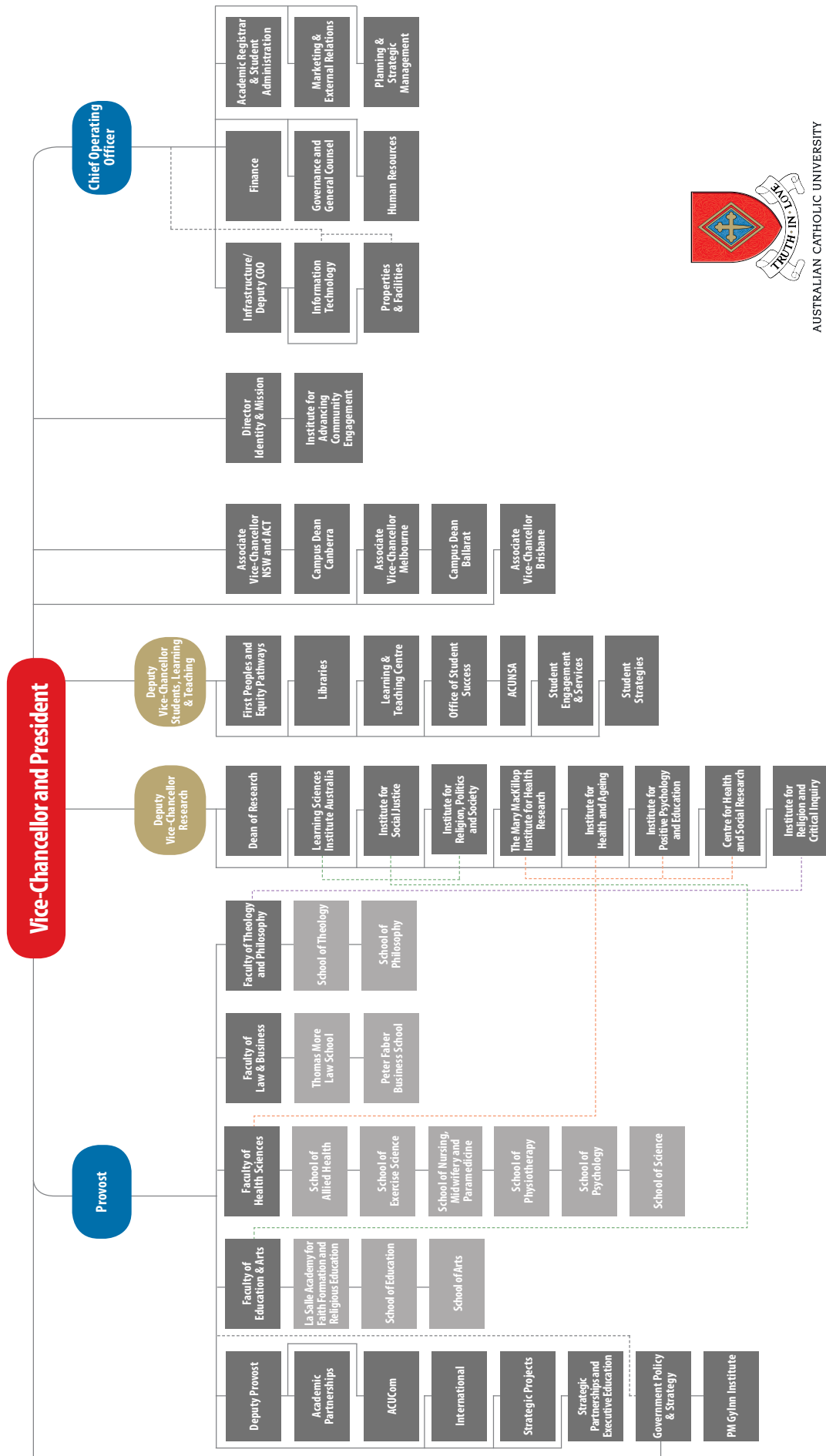
The Vice-Chancellor and President is the chief executive officer of the University. The Provost, Deputy Vice-Chancellors and the Chief Operating Officer have delegated responsibility for assigned areas of policy. Associate Vice-Chancellors in Sydney, Melbourne and Brisbane are the Vice-Chancellor's representative in their local region, as are the Campus Deans at Ballarat and Canberra.

The Vice-Chancellor and President is also assisted by the Faculty Executive Deans, Director, Marketing and External Relations, Executive Director, International, Director, Identity and Mission and other Directors with national portfolios.

Each Faculty is headed by an Executive Dean, who is supported by Associate Deans whose portfolios encompass Learning and Teaching, and Research.

Each campus has a Student Association and there is a national student body, ACUNSA (Australian Catholic University National Students' Association).

ACU ORGANISATIONAL CHART



AUSTRALIAN CATHOLIC UNIVERSITY

Organisational Structure
August 2016



ABOUT THE FACULTY OF EDUCATION AND ARTS

The Faculty of Education and Arts (FEA) operates across six of the University's campuses, making it home to a vibrant multicultural community of students enrolled in undergraduate and graduate entry preservice education programs, a wide range of arts courses and postgraduate and research programs.

The Faculty comprises:

- Two (2) National Schools – the National School of Education and the National School of Arts;
- The La Salle Academy of Religious Education, and
- The National Centre for Teacher Quality and Leadership.

The Faculty is recognised nationally and internationally as a leader and driver of education and arts and for its outstanding graduates and staff who, through their research and teaching, lead and transform their communities. It has a strong national framework that is implemented to address different local contexts.

The Faculty has extensive partnerships with industry, community groups and government bodies nationally and internationally. It is committed to capitalizing on the collective education and arts research strengths that come from working collegially across campuses.

Research interest groups, mentor and course/unit development encourage academic staff from all campuses to collaborate.

LEARNING AND TEACHING

The Faculty of Education and Arts offers highly flexible national, online and multimodal programs where students can discuss, debate and analyse in virtual classrooms. Students have opportunities to address real situations through professional and community experiences. It is recognised not only for its supportive and nurturing learning environment, but also for its ability to prepare graduates who think critically, who are guided by social justice principles and are highly valued by the professions.

Adding to its traditional strengths in primary and secondary teacher education, the education disciplines reflect key strengths in the areas of early childhood, mathematics and literacy education, assessment, educational leadership, religious education and wellbeing and inclusive education.

The Arts disciplines prepare graduates to be critical thinkers and global citizens. The disciplines include Drama, Economics, Creative Arts, Humanities, International Development and Global Studies and the Social Sciences.

RESEARCH

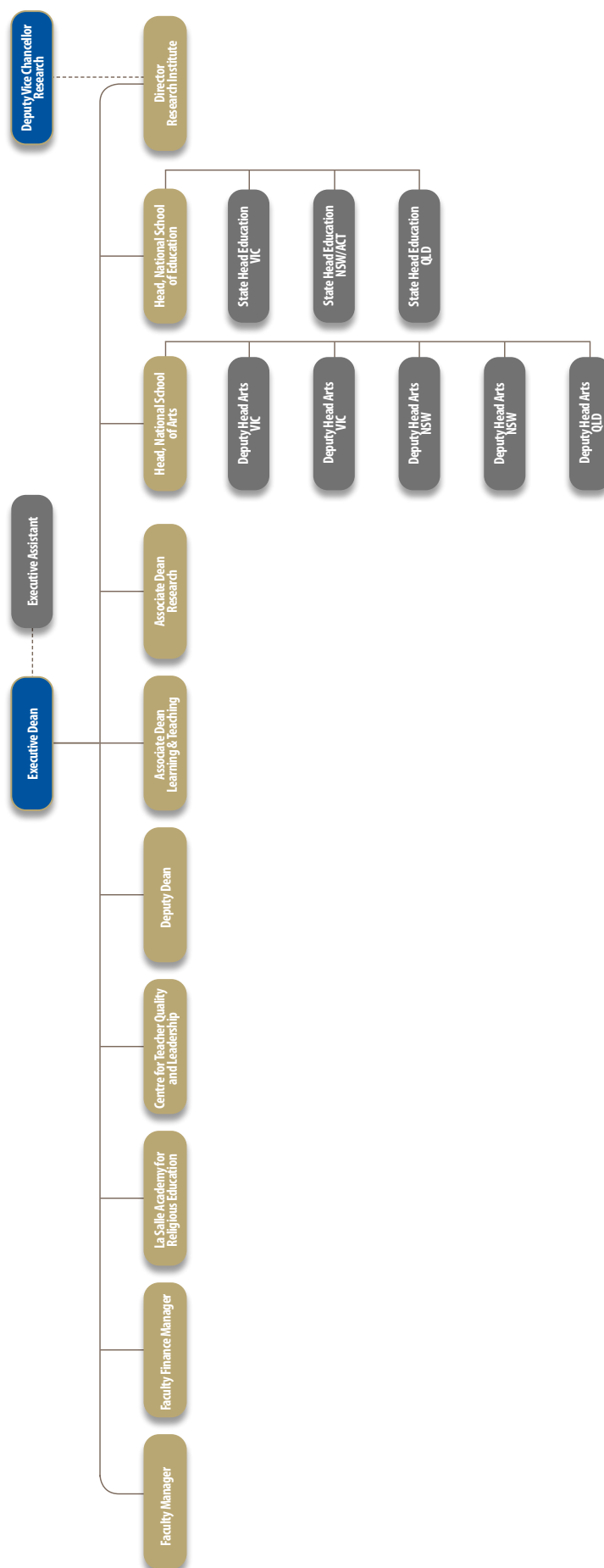
ACU is committed to creating a specialized, growing and well-regarded research environment. In response to the changing environment of the Higher Education sector and the aim of positioning ACU to realise its Strategic Plan goals, the University has prioritised the intensification of research over the next five years in order to achieve improved performance in priority research areas that results in improved University ERA results and overall research rankings.

In 2014, as part of the initial stage of research intensification, the Faculty established two world class research institutes; the Learning Sciences Institute Australia and the Institute for Social Justice. These institutes comprise a concentration of high quality, priority research programs with national and international reach. This initiative is underpinned by significant strategic investment. Research strengths in the arts are a priority for the Faculty.

Academics in the Faculty also undertake scholarly inquiry into learning and teaching, in higher education, schooling and community settings.

Further information about the Faculty can be found at: acu.edu.au/about_acu/faculties_institutes_and_centres

FACULTY OF EDUCATION AND ARTS ORGANISATIONAL CHART





ABOUT THE POSITION

The State Head (NSW/ACT) is a key leadership role within the Faculty of Education and Arts, and will work collaboratively with the National Head of School to ensure overall coherence of state-based operations and national University priorities.

Assisting the National Head of School and in collaboration with other State Heads, the State Head (NSW/ACT) will support the development and implementation of strategies for learning and teaching, research and research training, partnerships and collaborations to support the future viability of the School.

The position represents the School within NSW/ACT through strategic partnerships and collaborations with other agencies, educational institutions, external communities and stakeholders.

POSITION RESPONSIBILITIES

Subject to the direction of the National Head, the responsibilities of the State Head include:

- Lead the implementation of the School's courses and programs including contributing to course accreditation and quality assurance.
- Contribute to the performance of the School in relation to Learning and Teaching, Teaching and Research and Research Training and Community Engagement in the context of organisational and Faculty strategies.
- Undertake formal supervision of academic and professional staff (including sessional and casual staff) including leadership and performance capability, administration and management.
- Lead professional practice units and other relevant organisational units.
- Demonstrate commitment to professional activities outside the University and building effective local partnerships with external organisations and communities.
- Contribute to the financial management of the National School through relevant financial delegation.

- Participate in campus and University committees and related activities as appropriate.
- Be actively involved in professional proceedings within the School, Faculty and University.
- Contribute to people management in the context of Human Resource delegation.
- Engender commitment to the Catholic intellectual tradition through a strong focus on social justice and the common good in the activities of the National School.

LOCATION

This position may be based at either the North Sydney or the Strathfield ACU campus.

TYPE OF APPOINTMENT

The appointment will be as a full-time continuing Associate Professor/Professor of the Faculty of Education and Arts with a three (3) year assignment as State Head (NSW/ACT), which is renewable based on performance.



SELECTION CRITERIA

ESSENTIAL

1. A doctoral qualification in education or related discipline.
2. Significant academic teaching and research profile in higher education, including a strong relevant publication record, along with an understanding of the Australian higher education sector
3. Demonstrated evidence of the nexus between teaching and research in approaches to teaching and learning, and to research.
4. Demonstrated ability to attract research funding.
5. Demonstrated ability to supervise research students and research projects, including collaborative research.

6. Experience in budget planning and resource allocation.
7. Demonstrated ability to develop and maintain partnerships and collaborations with other agencies, educational institutions, external communities and stakeholders, in order to achieve quality learning, teaching and research outcomes.
8. Demonstrated leadership, management and administrative skills and experience, developed within a University setting
9. Strong interpersonal and communication skills, including the ability to work with others to achieve outcomes and continual improvement, together with the ability to lead and implement change and motivate staff.

10. Applicants should demonstrate awareness of the University's Mission and Catholic ethos and demonstrate an understanding of how this role serves the Mission.
11. Applicants should demonstrate commitment to cultural diversity and ethical practice principles, and demonstrate knowledge of equal employment opportunity and workplace health and safety, appropriate to the level of the appointment.
12. Demonstrate a commitment to working in an environment of performance excellence, guided by ACU's [Service Principles](#).

DESIRABLE

1. Experience relevant to the professional accreditation of education courses.

LEADERSHIP COMPETENCY FRAMEWORK

ACU has a unique identity and clear vision for the future, which is championed by the leaders of the University.

ACU's Leadership Competency Framework has been developed to promote leadership competencies that support the achievement of ACU's strategic direction.

As a leader, you will be expected to model and display competencies under the three broad areas of:

1. Preserves our Essential Character

- Displays Integrity
- Delivers Excellence
- Demonstrates Interpersonal Understanding

2. Works Collaboratively

- Works in Teams
- Leads and Develops Others
- Influences Effectively

3. Leads Our Future Success

- Displays Business Acumen
- Demonstrates Confidence
- Influences Effectively
- Leads Change

Further information is available at www.acu.edu.au/468577



SALARY AND BENEFITS

The University has a broad range of employment conditions and benefits available to staff members. These include:

- Standard fortnightly salary payments
- Flexible Working Conditions which aim to support ACU's commitment to Work-Life Balance
- Generous employer superannuation contributions of up to 17%, with flexible employee contribution options
- Salary packaging* including rebatable employer status
- A comprehensive range of professional development programs and opportunities
- Study support entitlements, encompassing leave and financial assistance

GENEROUS LEAVE CONDITIONS:

- 33 Recreational leave days per annum including Annual leave (20 working days), public holidays (10 working days) and University closure at Christmas (3 working days)
- 17½% Annual leave loading
- 20 working days personal leave per annum, which incorporates a number of leave types, including sick leave, carers leave, to move house, to attend graduation, to recognise culturally significant events

- Long Service Leave - eligibility after 7 years of service
- Recognition of previous service from other Australian higher education institutions for long service leave purposes*
- Parental leave provisions* including maternity, paternity, adoption, foster and child rearing.

*conditions apply

REBATABLE EMPLOYER STATUS:

As a rebatable employer Australian Catholic University is eligible for a rebate of 48 per cent of the amount of Fringe Benefit Tax (FBT) that would otherwise be payable.

The grossed-up taxable value of benefits that can be provided to an ACU employee per FBT year, without losing the rebate concession, is capped at \$30,000.

Most ACU employees will benefit from salary packaging such items as motor vehicles, superannuation and laptop computers, however only income earners falling in the higher tax brackets are likely to benefit from salary packaging 'Full FBT Items' such as mortgage payments, rent and credit card payments. This is dependent on personal circumstance and independent financial advice.

ACU employees, dependent on individual circumstance, have access to the following benefit items for salary packaging purposes:

CATEGORY A (FBT EXEMPT) BENEFIT ITEMS

- Personal Portable Computers – Notebook/ Laptop
- Car Parking
- Superannuation (must be a complying fund)
- Financial Counselling Fees
- Salary Packaging Administration Fees

CATEGORY B (CONCESSIONALLY TAXED) BENEFIT ITEMS

- Motor Vehicle (for private use) via Novated Leases

CATEGORY C (FULL FBT) BENEFIT ITEMS

- Own Home Mortgage Payments
- Private Home Rental Payments
- Amounts payable on or amounts already paid off credit cards (not debit cards)

OUR CAMPUSES



BRISBANE CAMPUS (MCAULEY AT BANYO)

Situated in the northern suburb of Banyo, the campus is 12 kilometres from the Brisbane city centre. The campus is set on 40-hectares of beautiful natural surroundings. The campus combines state-of-the-art facilities with a history extending back to 1863.



NORTH SYDNEY CAMPUS (MACKILLOP)

Just a five-minute train ride over the famous Sydney Harbour Bridge from the Sydney city centre, the campus is conveniently located in the North Sydney business precinct.



STRATHFIELD CAMPUS (MOUNT SAINT MARY)

Situated in one of the older, established suburbs in Sydney, the Strathfield Campus is located 15 kilometres west of the Sydney city centre. It incorporates gracious buildings, including an Italianate Romanesque style chapel, and is set in beautifully landscaped grounds.



MELBOURNE CAMPUS (ST PATRICK'S)

The campus is conveniently located on the fringe of Melbourne's Central Business District (CBD). It is within a short walk to the popular retail strips of Brunswick Street and Smith Street with their variety of cafés, shops and art galleries. Some of Melbourne's finest parks, gardens and recreational facilities are also within easy walking distance from the campus.



BALLARAT CAMPUS (AQUINAS)

Ballarat is 125 kilometres west of Melbourne. The campus is located near Ballarat's commercial centre within easy reach of facilities. The beautiful old buildings of the campus reflect the history of the town.



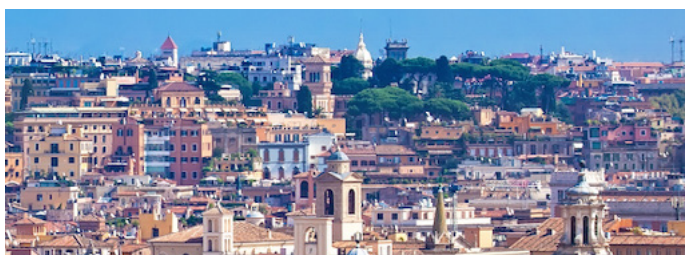
CANBERRA CAMPUS (SIGNADOU)

Situated about five kilometres from the Canberra city centre, the campus is small and friendly with around 40 staff and 600 students.



ADELAIDE CAMPUS (ST FRANCIS OF ASSISI)

The campus is located in the suburb of Thebarton where it is very conveniently co-located with the Offices of the Catholic Education South Australia (CESA).



ROME STUDY CENTRE

Located within a short distance from the Vatican, the centre will offer living quarters for undergraduates, a wing for postgraduate students, apartments for visiting faculty, a chapel, garden and other amenities.