



# Position Description

## Senior Lecturer in Engineering

School of Computing, Mathematics and Engineering

Faculty of Business, Justice and Behavioural Sciences

---

**Classification**

Level C

---

**Workplace agreement**

[Charles Sturt University Enterprise Agreement](#)

---

**Date last reviewed**

December 2024

---



## Faculty of Business, Justice and Behavioural Sciences

In the Faculty of Business, Justice and Behavioural Sciences our specialities are in policing, law, criminology, security, emergency management, psychology, accounting, engineering, human resources, marketing, business management, computing, customs and excise, and information technology. We possess excellent relationships with our industry, government, and community partners. Our research is high impact, practical and at world standard.

Underpinning all our actions is our purpose [Yindyamarra Winhanganha](#) 'the wisdom of respectfully knowing how to live well in a world worth living in'. We are guided by [Our vision](#) 'Australia's leading regional university advancing the careers of our students, inspiring research excellence, and driving regional outcomes with global impact' and our [four strategic focus](#) areas – Students, Research, People, Social Responsibility plus First Nations.

Over 300 academic staff deliver distinctive courses, online and on-campus, supported by a skilled team of professional staff. On-campus courses are delivered at the university's Albury-Wodonga, Bathurst, Canberra, Port Macquarie and Wagga Wagga campuses.

Academic staff within the faculty undertake impactful research that engages with governments and professional organisations, nationally, internationally and in regional communities, ensuring excellent supervision of Higher Degrees by Research students.

Further information on the faculty is available at: [bjbs.csu.edu.au](http://bjbs.csu.edu.au)

## School of Computing, Mathematics and Engineering

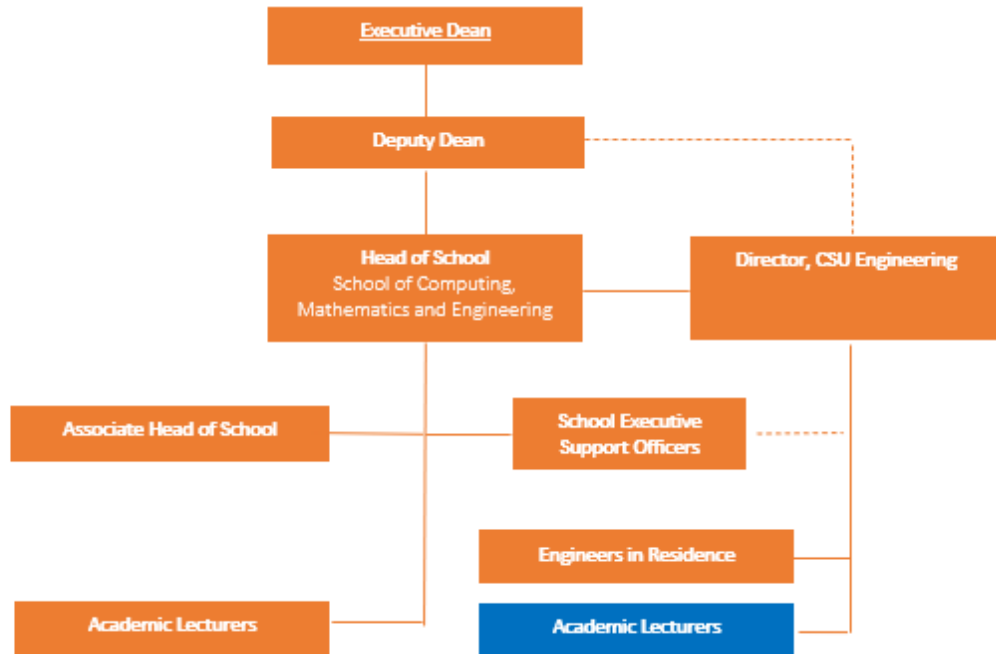
The School has a diverse team who works together in the pursuit of excellence in teaching, research, and community engagement. The school offers courses in information technology, computer science, cloud computing, cyber security, network administration, data science, artificial intelligence, mathematics, and engineering, in both on-campus and online modes. Since 2008, the school has been the largest provider of domestic postgraduate IT education.

CSU Engineering courses are run from the Bathurst campus. Offering specialisations in civil, electrical and mechanical engineering.

The focus of research in the school is on applied research in Data Mining, e-Health, Image Processing, Cyber Security, Artificial Intelligence, Applied Mathematics and Statistics which benefit the communities in our region. Our research staff have obtained nationally competitive grants from the Australian Research Council (ARC) as well as industry and government agencies such as a recent Cooperative Research Centre (CRC) in the cyber security area.



## Organisational chart



## Reporting relationship

**This position reports to:** Director, CSU Engineering

**This position supervises:** Nil

## Key working relationships

- Course Director
- Faculty and School Staff
- Students
- External Industry Partners



## Position overview

The Senior Lecturer in Engineering will use a range of approaches to develop and deliver effective face-to-face and online teaching in the Engineering programmes. They will serve as a role model to students through a range of research, professional and scholarly activities that contribute to the Engineering discipline and profession. They will support their colleagues in the development and delivery of the innovative new Engineering discipline at Charles Sturt University.

## Principal responsibilities

- Make a significant contribution to the development, implementation and promotion of Charles Sturt University learning and teaching methodologies, processes, technologies and tools to deliver high-quality student-centred learning opportunities in the relevant discipline and as required to meet the teaching needs of the University. Achieve excellence in teaching in a range of delivery modes, which may include face to face and online teaching.
- Establish and maintain strategic relationships and networks with a range of stakeholders including community, government departments, and professional bodies.
- Conduct ethical, high-quality research and contribute to knowledge relevant to the discipline at a national level through scholarship, publication and presentation. Execute a research plan that aligns with Charles Sturt University's Research Plan, with a focus on Regional impact.
- Engage in professional activities linked to knowledge development and problem solving such as research with, for and about the profession and about professional practice; projects related to critical evaluation and enhancement of practice; collaborations with research colleagues and professions/industries/businesses; authorship/editorship.
- Actively contribute to the governance, marketing and promotion, and administrative activities to facilitate the work of the Faculty/School.
- **Values:** Consistently embody the University's values in behaviour and decision-making, while encouraging inclusivity and collaboration to foster a safe and respectful work environment.



## Required capabilities

This section comprises capabilities from the Charles Sturt [Capability Framework](#). Read the Framework for more detail regarding these capabilities.

Capability	Capability Definition	Level of influence
<b>Innovates</b>		
<b>Navigates Complexity</b>	Adjusts and responds effectively to new or unexpected situations, challenges, or opportunities whilst developing strategies to manage wellbeing in a challenging environment.	Influence self
<b>Creates Innovative Solutions</b>	Uses methodologies that open up creative thinking and transform ideas into actionable plans and strategies. Reflects on outcomes and drives ongoing improvement.	Influence self
<b>Connects</b>		
<b>Builds Relationships</b>	Implements interdisciplinary collaboration, adopts diversity and inclusion principles, and facilitates relationship building to work effectively with others.	Influence self
<b>Connects in a Global World</b>	Recognises and values cultural differences, is contextually aware, and acts within scope of role but with consideration for global trends and issues.	Influence self
<b>Achieves</b>		
<b>Plans and Prioritises</b>	Effectively plans and aligns priorities with strategy. Effectively allocates and utilises resources to achieve goals.	Influence self
<b>Drives Impact</b>	Collaboratively engages with peers and stakeholders in the community and industry. Places our people and students at the centre of design decisions.	Influence self

This section comprises of Enabler and Manages Effectively capabilities from the Charles Sturt [Capability Framework](#).

Capability	Capability description	Level of influence
<b>Enablers</b>		
<b>Utilises Technology Effectively</b>	Builds capability in relevant technologies, complies with security obligations and addresses the ethics of technology use to minimise risk.	Influence self
<b>Manages Projects Effectively</b>	Applies effective planning and coordinates effort using project management practices to deliver specific project objectives.	Influence self
<b>Manages Effectively</b>		
<b>Demonstrates Self Awareness</b>	Builds an understanding of own thoughts, feelings, strengths, weaknesses and behaviours, to understand how others perceive them, to make sound	Influence self



## Physical capabilities

The incumbent may be required to perform the following.

- Work in other environments beyond your base campus, such as other campuses.
- On occasion drive a vehicle distances of up to 500km per day within the terms of the university's [Driver Safety Guidelines](#)

## Selection criteria

Applicants are expected to address the selection criteria when applying for this position.

### Essential

- A. A doctoral qualification appropriate to the relevant discipline.
- B. Evidence of and a demonstrated commitment to the delivery of high-quality student-centred learning and teaching.
- C. Demonstrated commitment to applying culturally respectful, inclusive, and safe practices in the workplace.
- D. Demonstrated high level written and oral communication and interpersonal skills including negotiating, presenting, active listening and the giving and receiving of constructive feedback.
- E. A record of significant achievement relevant to the discipline area, and at a national level, in the scholarship of teaching and/or research/creative works or professional activity.
- F. Significant knowledge and understanding of the discipline gained through industry experience and/or scholarly activities or similar.

### Desirable

- G. Chartered Professional Engineer (CPEng) status, or equivalent.