



# Position Description

## Lecturer in Diagnostic Radiography

School of Dentistry and Medical Sciences

Faculty of Science and Health

<b>Classification</b>	Level B
<b>Special conditions</b>	Must hold registration as a Diagnostic Radiographer with the Australian Health Practitioner Regulation Agency (Ahpra).
<b>Workplace agreement</b>	<a href="#">Charles Sturt University Enterprise Agreement</a>
<b>Date last reviewed</b>	October 2024

## Faculty of Science and Health

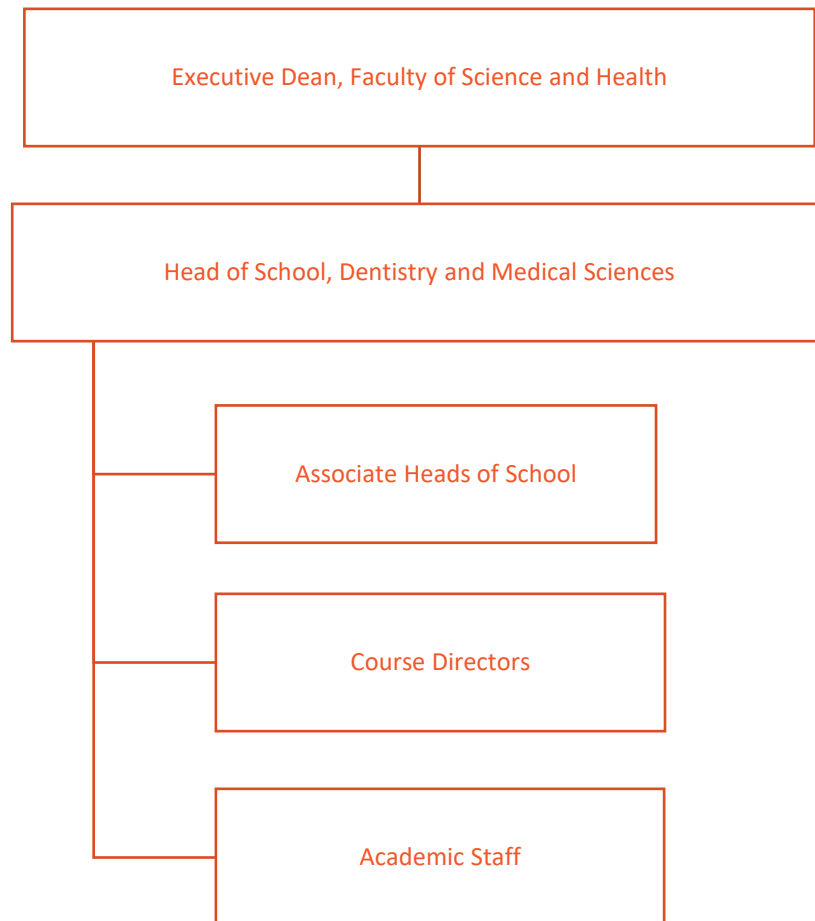
The [Faculty of Science and Health](#) has more than 9000 students and over 500 staff dedicated to advancing scientific knowledge. We deliver flexible and innovative teaching programs which provide graduates with the skills and knowledge to build a career, advance their profession and contribute to their community. We are a leader in strategic and applied research in a wide array of sciences. We enhance and extend knowledge, train and educate future researchers and provide scientific solutions to current challenges. We achieve this through ethical practice, professional collaborations, industry involvement and a commitment to continual improvement. We also provide a range of health and other services to our regional communities through our enterprises.

## School of Dentistry and Medical Sciences

The [School of Dentistry and Medical Sciences](#) brings together Charles Sturt University's rich history of health professional education in Dentistry, Oral Health Therapy and Medical Radiation Science. The School is committed to enhancing its reputation for delivering quality assured clinical education and producing highly sought after graduates, who are competent, reflective practitioners committed to providing patient centred care.



## Organisational chart



## Reporting relationship

**This position reports to:** Associate Head of School Medical Radiation Science, Pharmacy, Nuclear Physics and Science

**This position supervises:** N/A

## Key working relationships

- Head of School
- Course Director
- Associate Head of School
- Head of Discipline
- Faculty and School staff



## Position overview

The Lecturer in Diagnostic Radiography will actively engage in teaching, research and curriculum development related to the medical radiation sciences in the School of Dentistry and Medical Sciences. The appointee will have extensive clinical experience within the field of diagnostic radiography and can demonstrate education experience within the clinical and/or academic setting. The appointee will be responsible for teaching a range of subjects across the Bachelor of Medical Radiation Science, which may include clinical education and simulation, general radiographic and imaging anatomy, radiation biology and protection and foundational medical radiation science concepts. Ultrasound and magnetic resonance imaging experience is desirable but not essential.

It will be expected that multiple teaching methods (face-to-face and online delivery), including flipped classroom pedagogy, are utilised. The appointee will participate in Course and/or Subject administration and ongoing curriculum development and progress an active research profile that aligns with both the University and School's direction.

## Principal responsibilities

- Apply Charles Sturt University learning and teaching methodologies, processes, technologies and tools to deliver high-quality student-centred learning opportunities in the relevant discipline and as required to meet the teaching needs of the University. Achieve excellence in teaching in a range of delivery modes, which may include face-to-face and online teaching and assessment.
- Consistently embody the University's values in behaviour and decision-making while encouraging inclusivity and collaboration to foster a safe and respectful work environment.
- Actively contribute to collaborative processes to design, deliver and continually improve high-quality courses and learning experiences for students, including the giving and receiving of constructive feedback.
- Conduct ethical, high-quality research and contribute to knowledge through scholarship, publication and presentation and execute a research plan that aligns with Charles Sturt University's Research Plan and objectives, including pursuing funding opportunities and identifying and creating opportunities for collaborative research projects with internal and external researchers and stakeholders.
- Actively contribute to the governance, marketing and promotion, and administrative activities to facilitate the work of the Faculty/School.

## Required capabilities

This section comprises capabilities from the Charles Sturt [Capability Framework](#). Read the Framework for more detail regarding these capabilities.



Capability	Capability Definition	Level of influence
<b>Innovates</b>		
<b>Acts Strategically</b>	Analyses opportunities to determine effective solutions and solve problems in order to achieve short and long-term objectives.	Influence self
<b>Navigates Complexity</b>	Adjusts and responds effectively to new or unexpected situations, challenges, or opportunities whilst developing strategies to manage wellbeing in a challenging environment.	Influence self
<b>Connects</b>		
<b>Builds Relationships</b>	Implements interdisciplinary collaboration, adopts diversity and inclusion principles, and facilitates relationship building to work effectively with others.	Influence self
<b>Communicates with Influence</b>	Listens to understand the position of others and leverages effective communication and negotiation skills in order to influence and navigate toward mutually beneficial outcomes.	Influence self
<b>Achieves</b>		
<b>Drives Impact</b>	Collaboratively engages with peers and stakeholders in the community and industry. Places our people and students at the centre of design decisions.	Influence self

Capability	Capability description	Level of influence
<b>Enablers</b>		
<b>Practices Effective Governance</b>	Refers to policies, processes and guidance to support effective decision making and applies risk management processes to mitigate risk and proactively manage safety and compliance obligations.	Influence self

## Physical capabilities

The incumbent may be required to perform the following.

- Work in other environments beyond your base campus, such as other campuses.
- On occasion drive a vehicle distance up to 500km per day within the terms of the university's [Driver Safety Guidelines](#)
- Physically able to sit for extended periods of time to perform reading, writing and computing-related activities, including keyboard and mouse operations.

## Selection criteria

Applicants are expected to address the selection criteria when applying for this position.

### Essential



- A. A masters qualification relevant to diagnostic radiography or medical imaging or equivalent accreditation and standing.
- B. Full registration as a Diagnostic Radiographer with the Australian Health Practitioner Regulation Agency (Ahpra).
- C. Evidence of the delivery of high-quality student-centred learning and teaching as a lecturer, tutor, clinical educator or supervisor in a patient clinic setting or a tertiary education institution.
- D. Sound knowledge and understanding of the discipline gained through industry experience and/or scholarly activities and/or course administration.
- E. A record of research/creative works or professional activity relevant to the discipline, which demonstrates a capacity to make an autonomous contribution.
- F. Demonstrated high-level written and oral communication and interpersonal skills, including negotiating, presenting, active listening and giving and receiving constructive feedback.