



Position Description

Lecturer in Equine Surgery

School of Agricultural, Environmental and Veterinary Sciences

Faculty of Science and Health

Classification	Level B
Delegation band	Delegations and Authorisations Policy (see Section 3)
Special conditions	Participation in after-hours surgery roster
Workplace agreement	Charles Sturt University Enterprise Agreement
Date last reviewed	8 September 2021



About Charles Sturt University

Purpose

The Wiradjuri phrase *yindyamarra winhanganha* means the wisdom of respectfully knowing how to live well in a world worth living in. This phrase represents who we are at Charles Sturt University – our ethos. It comes from traditional Indigenous Australian knowledge, but it also speaks to the vision of the university – to develop and spread wisdom to make the world a better place.

Vision

Charles Sturt University is set to undergo a decade of great reform that will see the university characterised by these key elements:

- An uncompromising drive towards excellence in every aspect of its operations
- A far-reaching strategic re-positioning of teaching, learning, research, and innovation
- A cementing of our position as Australia’s pre-eminent rural and regional university

The overarching aim is to consolidate our institution so that it is demonstrably more resilient and sustainable by the end of the decade.

Goals

To deliver on our purpose and vision, the university has three key goals:

1. Maintain the university’s position in the top five Australian universities for graduate outcomes based on employment and salary
2. Embed a culture of excellence across all aspects of the university’s operations
3. Exponential growth in research, development, and innovation income in our chosen areas, delivering high impact outcomes for regional Australia

Our values

Charles Sturt has a proud history and is fortunate to have an outstanding group of diverse, passionate, and engaged people working with us. Our values of insightful, inclusive, impactful, and inspiring guide our behaviours and ways of working to help us achieve our ethos of creating a world worth living in.

Performance measures

In addition to the principal responsibilities senior leaders will be required to contribute to the success of the university strategy including meeting the eight key university key performance indicators:

Our Students	Commencing Progress Rate Student Experience
Our Research	Research Income Research Quality and Impact
Our People	All Injury Frequency Rate Engagement
Our Social Responsibility	Underlying Operating Result Community and Partner Sentiment



Faculty of Science and Health

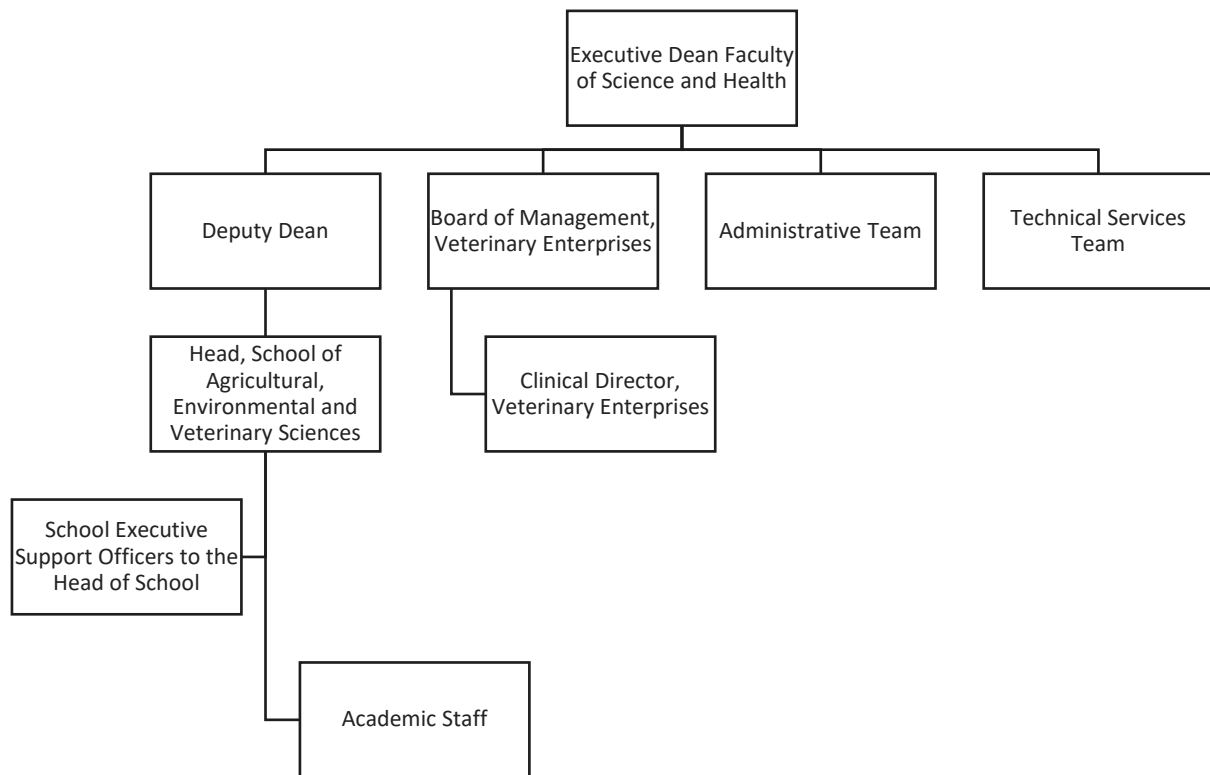
School of Agricultural, Environmental and Veterinary Sciences

[The Faculty of Science and Health](#) has more than 9000 students and over 500 staff dedicated to advancing scientific knowledge. It delivers flexible and innovative teaching programs designed to produce job-ready graduates for a diverse range of professions. As a leader in strategic and applied research, the Faculty aims to enhance and extend scientific knowledge, train and educate future researchers as well as provide scientific solutions to current regional, national and global challenges. The staff and students of the Faculty achieve their educational and research goals through ethical practice, professional collaboration, industry involvement and a commitment to continual improvement. The Faculty is involved in teaching and research over a wide range of areas, including: Agricultural and Wine Sciences, Biological Sciences, Veterinary and Animal Sciences, Dentistry, Medical Radiation Science, Pre-Hospital Care, Allied Health, Nursing and Midwifery, and Environmental Sciences.

The School of Agricultural, Environmental and Veterinary Sciences provides more than twenty undergraduate and postgraduate courses within the Faculty of Science and Health. This includes Agricultural Science, Agribusiness Animal Science, Environmental Science and Management and Veterinary Science. The School has substantial infrastructure of a high standard for training veterinary undergraduates and postgraduates, including access to on-campus veterinary enterprises in Wagga. The School has a strong research profile, including significant numbers of undergraduate honours and higher research degree students. Relevant research strengths include animal health, welfare and diseases, epidemiology, biosecurity, toxicology, animal models of human conditions and animal production.



Organisational chart



Reporting relationship

This position reports to: Head of School, School of Agricultural, Environmental and Veterinary Sciences

This position supervises: Nil

Key working relationships

- Academic and general staff, Veterinary Clinical Centre
- Clinical Director, Veterinary Enterprises
- Superintendent, Veterinary Clinical Centre
- Veterinary Enterprises Manager



Position overview

As a Lecturer in Equine Surgery you will teach, perform clinical work and engage in research and/or professional activity. The provision of high-quality equine surgery services at our Veterinary Clinical Centre in Wagga Wagga is an important part of the role. These facilities are staffed by several clinicians and residents and are equipped with state-of-the-art diagnostic, imaging, surgical, anaesthetic and monitoring equipment. Teaching will include both undergraduates and postgraduates (residents).

The incumbent will be expected to develop their research interests in collaboration with other staff in the School and University and/or develop professional skills including engagement with the profession and provision of referral practice. Contribution to a range of professional and administrative roles within the School is also required.

Principal responsibilities

- Apply CSU learning and teaching methodologies, processes, technologies and tools to deliver high quality student centred learning opportunities in the relevant discipline and as required to meet the teaching needs of the University. Achieve excellence in teaching in a range of delivery modes, which may include face to face and online teaching and assessment.
- Build strong professional relationships with students and provide timely and appropriate consultation and feedback.
- Actively contribute to collaborative processes to design, deliver and continually improve high quality courses and learning experiences for students including the giving and receiving of constructive feedback.
- Actively contribute to high performing multi disciplinary teams with an outcome focus and the development of a respectful, trusting and collaborative working environment.
- Provide leadership and management, as appropriate, in the convening, coordination and delivery of subjects and/or courses. This may include coordinating and/or leading other staff including casual academic staff.
- Proactively develop and foster relationships with a range of stakeholders including referring Veterinarians, community, government departments, and professional bodies.
- Maintain a sound and current knowledge and understanding of the relevant discipline through industry engagement and/or scholarly activities, clinical innovation or similar.
- Conduct ethical, high quality research and contribute to knowledge through scholarship, publication and presentation and execute a research plan that aligns with CSU's Research Plan and objectives including pursuing funding opportunities.
- Identify and create opportunities for collaborative research projects with internal and external researchers and stakeholders.
- Continue to build a record of research/creative work which contributes to the development of the discipline whilst maintaining up-to-date research records within CSU's research database.
- Provide leadership and foster partnerships with the professions that bring direct benefit to the strategic work of the University, in terms of teaching, workplace learning, course profile and/or areas of research strength.
- Contribute to the development and improvement of policy and practice through involvement in professional/industry associations, accreditation authorities, conference organisations, advisory bodies, and national or international delegations, consistent with the University's Outside Professional Activities Policy.



- Engage in professional activities and/or research that advances the standing and practice of the veterinary profession, especially in equine surgery
- Develop, lead and support continuing professional education including Resident and Higher Degree by Research student supervision and maintain professional accreditation;
- Undertake projects that enhance curricula and that are of particular benefit to the School or discipline, or projects that investigate practice and university teaching/curricula;
- Participate in shared after-hours surgical roster;
- Must currently hold a NSW drivers licence or be willing to obtain a NSW driver's licence;
- Other duties appropriate to the classification as required

Role-specific capabilities

Focus on service	Strive to meet needs and exceed expectations of our students, communities and colleagues (performance focus, quality outcomes, student welfare, equity and conduct).
Innovative	With creativity at our core, be open to new ideas and seek to find better ways.
Live our values	Uphold the Charles Sturt University values daily in our own behaviours and interactions with others.
Adapt to change	Explore the reasons for change and be willing to accept new ideas and initiatives.
Apply expertise and technology	Apply, develop and share specialist and detailed technical expertise, understanding other organisational disciplines.
Achieve personal work goals and objectives	Accept and tackle demanding goals, work hard, make the most of development opportunities, seek progression.

Physical capabilities

The incumbent may be required to perform the following.

- Work in other environments beyond your base campus, such as other campuses.
- On occasion drive a university vehicle distances up to 500km per day within the terms of the university's [Driver Safety Guidelines](#)
- Perform in an accurate and timely manner push/pull, reaching, grasping, fine manipulation tasks, including lifting items up to 10kg.
- Physically able to sit for extended periods of time to perform reading, writing and computing related activities including keyboard and mouse operations;
- Physically capable of conducting clinical work including with large animals.



Selection criteria

Applicants are expected to address the selection criteria when applying for this position.

Essential

- A. A degree in Veterinary Science and eligibility for registration with the Veterinary Practitioners Board in NSW.
- B. Board certification by the American and/or European College of Veterinary Surgeons or eligibility to sit board examination or equivalent accreditation and standing through professional experience.
- C. A record of research/creative works or professional activity relevant to the discipline, which demonstrate a capacity to make an autonomous contribution.
- D. Evidence of and demonstrated commitment to the delivery of high-quality student-centred learning and teaching.
- E. Knowledge and understanding of the discipline gained through industry experience and/or scholarly activities or similar.

