



# Position Description

## Lecturer in Diagnostic Radiography

School of Dentistry and Medical Sciences

Faculty of Science and Health

<b>Classification</b>	Level B
<b>Delegation band</b>	<a href="#">Delegations and Authorisations Policy (see Section 3)</a>
<b>Special conditions</b>	Nil
<b>Workplace agreement</b>	<a href="#">Charles Sturt University Enterprise Agreement</a>
<b>Date last reviewed</b>	July 2022



# About Charles Sturt University

## Purpose

The Wiradjuri phrase *yindyamarra winhanganha* means the wisdom of respectfully knowing how to live well in a world worth living in. This phrase represents who we are at Charles Sturt University – our ethos. It comes from traditional Indigenous Australian knowledge, but it also speaks to the vision of the university – to develop and spread wisdom to make the world a better place.

## Vision

Charles Sturt University is set to undergo a decade of great reform that will see the university characterised by these key elements:

- An uncompromising drive towards excellence in every aspect of its operations
- A far-reaching strategic re-positioning of teaching, learning, research, and innovation
- A cementing of our position as Australia’s pre-eminent rural and regional university

The overarching aim is to consolidate our institution so that it is demonstrably more resilient and sustainable by the end of the decade.

## Goals

To deliver on our purpose and vision, the university has three key goals:

1. Maintain the university’s position in the top five Australian universities for graduate outcomes based on employment and salary
2. Embed a culture of excellence across all aspects of the university’s operations
3. Exponential growth in research, development, and innovation income in our chosen areas, delivering high impact outcomes for regional Australia

## Our values

Charles Sturt has a proud history and is fortunate to have an outstanding group of diverse, passionate, and engaged people working with us. Our values of insightful, inclusive, impactful, and inspiring guide our behaviours and ways of working to help us achieve our ethos of creating a world worth living in.

## Performance measures

In addition to the principal responsibilities all staff are required to contribute to the success of the university strategy including meeting university’s eight key performance indicators:

<b>Our Students</b>	<ul style="list-style-type: none"> <li>• Commencing progress rate</li> <li>• Student experience</li> </ul>
<b>Our Research</b>	<ul style="list-style-type: none"> <li>• Research income</li> <li>• Research quality and impact</li> </ul>
<b>Our People</b>	<ul style="list-style-type: none"> <li>• Engagement</li> <li>• All injury frequency rate</li> </ul>
<b>Our Social Responsibility</b>	<ul style="list-style-type: none"> <li>• Underlying operating result</li> <li>• Community and partner sentiment</li> </ul>



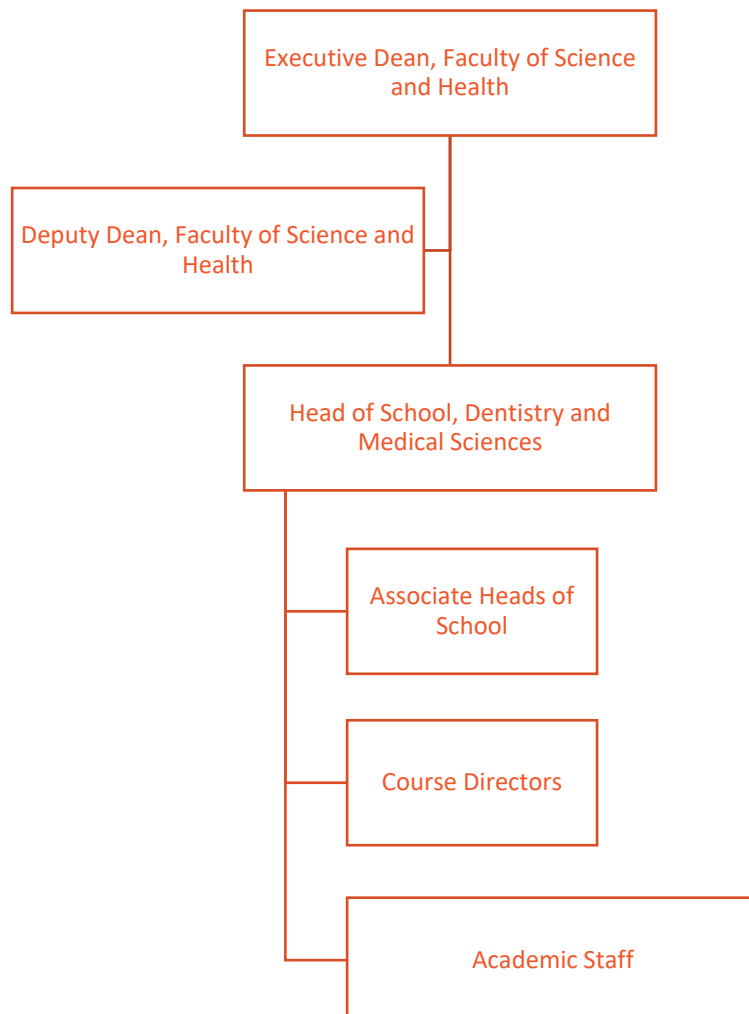
## Faculty of Science and Health

The Faculty of Science has more than 9000 students and over 500 staff dedicated to advancing scientific knowledge. We deliver flexible, innovative teaching programs which provide graduates with the skills and knowledge to build a career, advance their profession and contribute to their community. We are a leader in strategic and applied research in a wide array of sciences. We enhance and extend knowledge, train and educate future researchers and provide scientific solutions to current challenges. We achieve this through ethical practice, professional collaborations, industry involvement and a commitment to continual improvement. We also provide a range of health and other services to our regional communities through our enterprises.

## School of Dentistry and Medical Sciences

The School of Dentistry and Medical Sciences brings together Charles Sturt University's rich history of health professional education in Dentistry, Oral Health Therapy and Medical Radiation Science. The School is committed to enhancing its reputation for delivering quality assured clinical education and producing highly sought after graduates, who are competent, reflective practitioners committed to providing patient centred care.

## Organisational chart





## Reporting relationship

**This position reports to:** Head of School

**This position supervises:** N/A

## Key working relationships

- Head of School
- Course Director
- Faculty and School staff

## Position overview

The Lecturer in Diagnostic Radiography will actively engage in teaching, research and curriculum development related to the Medical Radiation Sciences in the School of Dentistry and Medical Sciences. The appointee will have extensive clinical experience within the field of diagnostic radiography and can demonstrate education experience within the clinical and/or academic setting. The appointee will be responsible for teaching a range of subjects which may include general radiographic and imaging anatomy, medical radiation science and clinical simulation.

It will be expected that multiple teaching methods (face to face and online delivery) are utilised. The appointee will participate in Course and/or Subject administration and ongoing curriculum development and progress an active research profile that aligns with both the University and School's direction.

## Principal responsibilities

- Apply CSU learning and teaching methodologies, processes, technologies and tools to deliver high quality student centred learning opportunities in the relevant discipline and as required to meet the teaching needs of the University. Achieve excellence in teaching in a range of delivery modes, which may include face to face and online teaching and assessment.
- Supervise Research Higher Degree students.
- Actively contribute to collaborative processes to design, deliver and continually improve high quality courses and learning experiences for students including the giving and receiving of constructive feedback.
- Actively contribute to high performing multi disciplinary teams with an outcome focus and the development of a respectful, trusting and collaborative working environment.
- Provide leadership and management, as appropriate, in the convening, coordination and delivery of subjects and/or courses. This may include coordinating and/or leading other staff including casual academic staff.
- Maintain a sound and current knowledge and understanding of the relevant discipline through industry engagement and/or scholarly activities or similar.
- Conduct ethical, high quality research and contribute to knowledge through scholarship, publication and presentation and execute a research plan that aligns with CSU's Research Plan and objectives including pursuing funding opportunities.
- Identify and create opportunities for collaborative research projects with internal and external researchers and stakeholders.



- Continue to build a record of research/creative work which contributes to the development of the discipline whilst maintaining up-to-date research records within CSU's research database.
- Provide leadership and foster partnerships with the professions that bring direct benefit to the strategic work of the University, in terms of teaching, workplace learning, course profile and/or areas of research strength.
- Contribute to the development and improvement of policy and practice through involvement in professional/industry associations, accreditation authorities, conference organisations, advisory bodies, and national or international delegations, consistent with the University's Outside Professional Activities Policy.
- Develop, lead and/or evaluate continuing professional education and maintain professional accreditation.
- Participate in external professional reviews.
- Actively contribute to the governance, marketing and promotion, and administrative activities to facilitate the work of the Faculty/School.
- Other duties appropriate to the classification as required.



## Role-specific capabilities

This section comprises capabilities from the [Charles Sturt Capability Framework](#).

<b>Service Focused</b>	Strive to meet needs and exceed expectations of our students, communities and colleagues (performance focus, quality outcomes, Student welfare, equity & conduct)
<b>Network</b>	Bring people together and build relationships that deliver desired benefits and outcomes
<b>Listen Closely</b>	Dig deep to understand others, using self-insight to build team spirit and recognise efforts
<b>Applying expertise and technology</b>	Applying, developing and sharing specialist and detailed technical expertise, understanding other organisational disciplines
<b>Presenting and Communicating Information</b>	Speaking clearly and fluently, expressing opinions, making presentations, responding to an audience, showing credibility
<b>Learning and Researching</b>	Learning rapidly, gathering information, understanding rapidly, managing knowledge, ensuring organisational learning approach
<b>Planning and Organising</b>	Setting objectives, planning, establishing contingencies, managing time, resources and people, monitoring progress

## Physical capabilities

The incumbent may be required to perform the following.

- Work in other environments beyond your base campus, such as other campuses, as well as possible car and air travel and work with a diverse range of staff, students and community members.
- On occasion drive a vehicle distances up to 500km per day within the terms of the university's [Driver Safety Guidelines](#)
- Physically able to sit for extended periods of time to perform reading, writing and computing related activities including keyboard and mouse operations.



## Selection criteria

Applicants are expected to address the selection criteria when applying for this position.

### Essential

- A. A masters qualification appropriate to the relevant discipline or equivalent accreditation and standing.
- B. Current registration as a Medical Radiation Practitioner with the Australian Health Practitioner Regulation Agency (Ahpra).
- C. Evidence of the delivery of high-quality student-centred learning and teaching as a lecturer, tutor, demonstrator or supervisor, in a patient clinic setting or a tertiary education institution.
- D. Sound knowledge and understanding of the discipline gained through industry experience and/or scholarly activities and/or course administration.
- E. A record of research/creative works or professional activity relevant to the discipline, which demonstrate a capacity to make an autonomous contribution.
- F. Demonstrated high level written and oral communication and interpersonal skills including negotiating, presenting, active listening and the giving and receiving of constructive feedback.





● - Capital city ● - Campus location

