



Position Description

**Research Hub Manager - One Basin CRC (Cooperative Research Centre),
Griffith**

Gulbali Institute

Office of the Deputy Vice-Chancellor, Research

Classification	Level 8
Delegation band	Delegations and Authorisations Policy (see Section 3)
Special conditions	<p>The role is based at the CRC's Mid-Basin Hub at Murrumbidgee Irrigation's corporate offices, Griffith NSW. The Regional Hub office will be the primary place of work during normal office hours.</p> <p>This role will require some work outside of normal business hours and travel.</p>
Workplace agreement	Charles Sturt University Enterprise Agreement
Date last reviewed	8 August 2023



About Charles Sturt University

Purpose

The Wiradjuri phrase *yindyamarra winhanganha* means the wisdom of respectfully knowing how to live well in a world worth living in. This phrase represents who we are at Charles Sturt University – our ethos. It comes from traditional Indigenous Australian knowledge, but it also speaks to the vision of the university – to develop and spread wisdom to make the world a better place.

Vision

Charles Sturt University is set to undergo a decade of great reform that will see the university characterised by these key elements:

- An uncompromising drive towards excellence in every aspect of its operations
- A far-reaching strategic re-positioning of teaching, learning, research, and innovation
- A cementing of our position as Australia’s pre-eminent rural and regional university

The overarching aim is to consolidate our institution so that it is demonstrably more resilient and sustainable by the end of the decade.

Goals

To deliver on our purpose and vision, the university has three key goals:

1. Maintain the university’s position in the top five Australian universities for graduate outcomes based on employment and salary
2. Embed a culture of excellence across all aspects of the university’s operations
3. Exponential growth in research, development, and innovation income in our chosen areas, delivering high impact outcomes for regional Australia

Our values

Charles Sturt has a proud history and is fortunate to have an outstanding group of diverse, passionate, and engaged people working with us. Our values of insightful, inclusive, impactful, and inspiring guide our behaviours and ways of working to help us achieve our ethos of creating a world worth living in.

Performance measures

In addition to the principal responsibilities all staff are required to contribute to the success of the university strategy including meeting university’s eight key performance indicators:

Our Students	<ul style="list-style-type: none">• Commencing progress rate• Student experience
Our Research	<ul style="list-style-type: none">• Research income• Research quality and impact
Our People	<ul style="list-style-type: none">• Engagement• All injury frequency rate
Our Social Responsibility	<ul style="list-style-type: none">• Underlying operating result• Community and partner sentiment

Gulbali Institute

Charles Sturt University's [Gulbali Institute](#) conducts integrated Agriculture, Water and Environmental research that is grounded in our footprint across the Murray-Darling Basin. The Gulbali Institute's research strengths are in the areas of optimising farm systems for performance and sustainability, enhancing the health and resilience of freshwater ecosystems, and promoting biodiversity across landscapes.

"Gulbali ngurambang" is Wiradjuri for "to understand country". After consultation with First Nations people, we use this phrase respectfully as the name of our research institute.

Charles Sturt University, through the Gulbali Institute, is a Tier 1 Research Partner in the One Basin CRC.

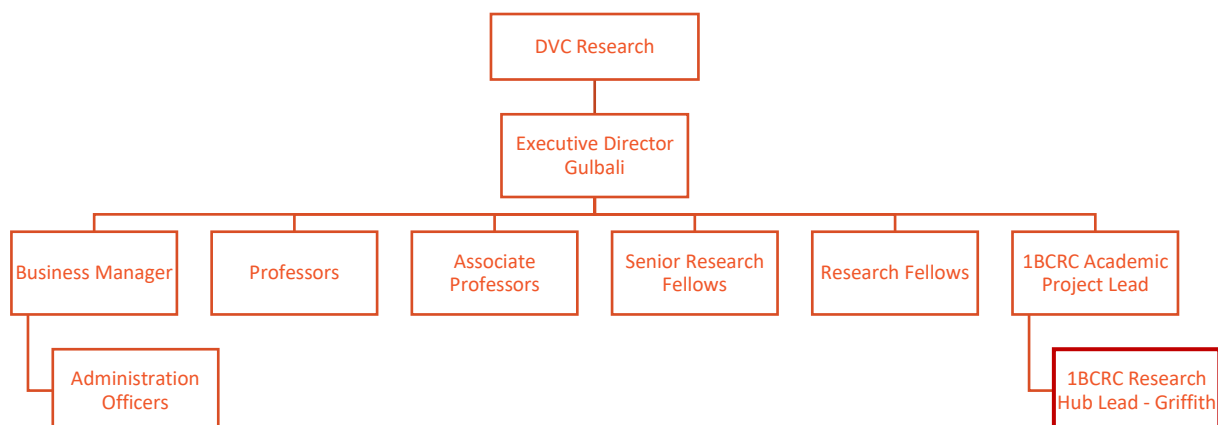
One Basin Cooperative Research Centre

The [One Basin CRC](#) is a focused research collaboration developing policy, technical and financial solutions to support and reduce exposure to climate, water and environmental threats in the Murray-Darling Basin. The CRC includes more than 85 partners across industry, governments, research organisations and not for profits working to achieve a more productive, resilient and sustainable Murray-Darling Basin and beyond. The CRC commenced on 1 July 2022 supported by a commonwealth grant of \$50m from the Commonwealth CRC Program and \$106.5m co-investment of our partners over 10 years.

The CRC has a strong commitment to work collaboratively with our partners and stakeholders across the basin to achieve real world outcomes and impact. The One Basin CRC is values-based organisation. Effective communication is central to our value proposition and is embedded as a core value of the organisation.

The CRC has a commitment to place-based research in the Basin with focus around four Regional Hubs located at Loxton, Mildura, Griffith and Goondiwindi. Three quarters of our staff will be based in the Basin focussed around these regional hubs.

Organisational chart





Reporting relationship

This position reports to: Academic Project Lead for the One Basin CRC

This position supervises: Nil

Key working relationships

- Regional Hub Manager Director, One Basin CRC
- Griffith Hub-based research staff and PhD students
- Gulbali Institute executive, research and administrative staff
- One Basin CRC industry and government partners
- Hub Managers at the One Basin CRC's other three hub locations
- One Basin CRC program leads, industry convenors, and research partner leads



Position overview

Reporting to the Academic Project Lead, the Research Hub Manager will provide three core roles: lead support for Research Program Leaders and research teams in their development and delivery of One Basin CRC research projects; provide operational management leadership within the Griffith Hub region to facilitate the successful delivery of One Basin CRC activities; and provide partner engagement leadership throughout the Griffith Hub region. The Research Hub Manager will be part of the One Basin CRC Leadership Team.

Principal responsibilities

- Lead administrative and logistical support for research teams conducting projects in the Griffith One Basin CRC Hub region that relate to developing policy, technical and financial solutions to reduce exposure to climate, water and environmental threats in the Murray-Darling Basin.
- Design, implement, continuously review and improve control systems and processes that ensure the efficient and effective functioning of Griffith hub operations, including resourcing, staffing and performance monitoring.
- Create and maintain meaningful connections between One Basin CRC industry and research partners by fostering mutually beneficial relationships between partners with an interest in the Griffith One Basin CRC Hub region.
- Participate in One Basin CRC projects with a focus on coordinating effective project-level engagement with regional partners.
- Facilitate the residency of One Basin CRC students, interns, researchers and staff at the Griffith One Basin CRC Hub location.
- Ensure all One Basin representatives attending the Griffith Regional Hub location and/or conducting research within the Griffith Hub region adhere to relevant operational health and safety requirements and guidelines as well as relevant One Basin CRC policies and procedures.
- Provide executive support for the Regional Advisory Committee in their role.
- Chair, or participate in, Advisory Committees for projects operating in the Griffith Regional Hub including quarterly Project Review meetings.
- Report on Regional Hub activities and progress to the One Basin CRC Executive.
- Provide summary communications to the One Basin CRC Board, Partner Forum, Cross-Hub Advisory Committee and the relevant Regional Advisory Committee.
- Other duties as required.



Role-specific capabilities

Plan and organise	Set objectives, plan, establish contingencies, manage time, resources and people, monitor progress.
Network	Bring people together and build relationships that deliver desired benefits and outcomes.
Influence	Create compelling arguments to persuade others and promote ideas that add strategic value.
Adapt to change	Explore the reasons for change and be willing to accept new ideas and initiatives.
Present and communicate information	Speak clearly and fluently, express opinions, make presentations, respond to an audience, show credibility.

Physical capabilities

The incumbent may be required to perform the following.

- Work in other environments beyond your base campus, such as other campuses.
- On occasion drive a vehicle distances up to 500km per day within the terms of the university's [Driver Safety Guidelines](#)
- Perform in an accurate and timely manner push/pull, reaching, grasping, fine manipulation tasks, including lifting items up to 10kg.



Selection criteria

Applicants are expected to address the selection criteria when applying for this position.

Essential

- A. A degree in science, agriculture, environment, business management, communication or other relevant discipline, with eight years graduate experience; or an equivalent level of knowledge gained through a combination of education, training and/or experience.
- B. Demonstrated experience of stakeholder engagement at the nexus of research organisations and government/industry partners, exerting influence with tact and diplomacy to build collaborative relationships.
- C. Demonstrated experience in project management, including personnel, budget, monitoring and reporting.
- D. Experience in organising and delivering stakeholder workshops and events.
- E. Demonstrated capacity to work effectively as a member of a team and autonomously.
- F. Excellent written and verbal communication skills with demonstrated ability to produce and present high-quality information to a broad range of audiences.
- G. Current Australian driver's license.

Desirable

- H. Leadership or other experience within a cooperative multi-organisation program.
- I. Demonstrated experience in managing and delivering research programs.
- J. Knowledge and experience in the water, agriculture or environmental sectors.
- K. Strong and relevant networks within the Regional Hub region.



Brisbane

New South Wales

Dubbo

Port Macquarie

Orange

Bathurst

Sydney

Goulburn
NSW Police Academy

Wagga Wagga

Canberra

Albury-Wodonga

Wangaratta
Regional Study Centre

Victoria

Melbourne

● - Capital city ● - Campus location

