



Position Description

Lecturer in Clinical Psychology

School of Psychology

Faculty of Business, Justice and Behavioural Sciences

Classification Level B

Workplace agreement [Charles Sturt University Enterprise Agreement](#)

Date last reviewed March 2025



Faculty of Business, Justice and Behavioural Sciences

In the Faculty of Business, Justice and Behavioural Sciences our specialities are in policing, law, criminology, security, emergency management, psychology, accounting, engineering, human resources, marketing, business management, computing, customs and excise, and information technology. We possess excellent relationships with our industry, government, and community partners. Our research is high impact, practical and at world standard.

Underpinning all our actions is our purpose [Yindyamarra Winhanganha](#) 'the wisdom of respectfully knowing how to live well in a world worth living in'. We are guided by [Our vision](#) 'Australia's leading regional university advancing the careers of our students, inspiring research excellence, and driving regional outcomes with global impact' and our [four strategic focus](#) areas – Students, Research, People, Social Responsibility plus First Nations.

Over 300 academic staff deliver distinctive courses, online and on-campus, supported by a skilled team of professional staff. On-campus courses are delivered at the university's Albury-Wodonga, Bathurst, Canberra, Port Macquarie and Wagga Wagga campuses.

Academic staff within the faculty undertake impactful research that engages with governments and professional organisations, nationally, internationally and in regional communities, ensuring excellent supervision of Higher Degrees by Research students.

Further information on the faculty is available at: bjbs.csu.edu.au

School of Psychology

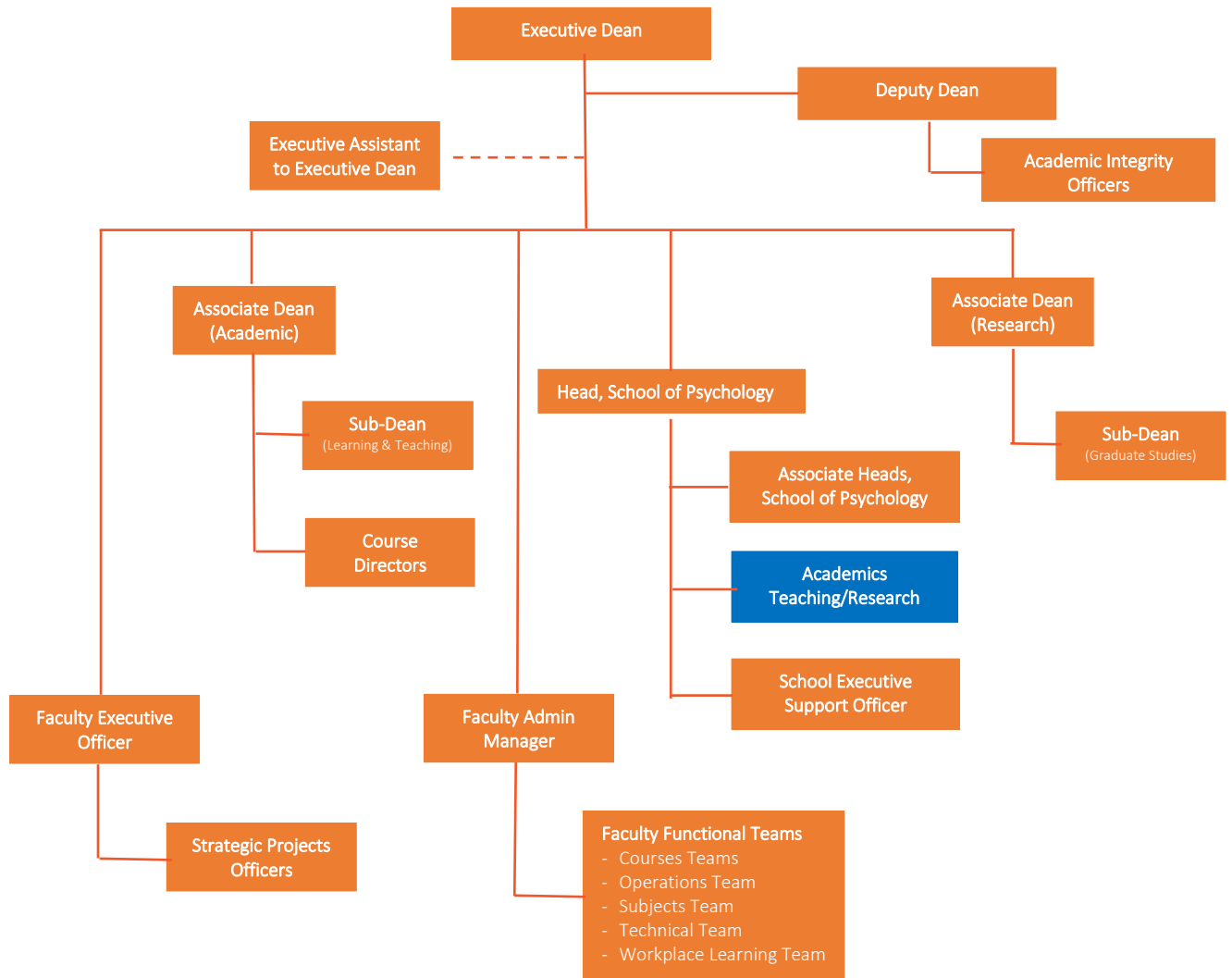
The School of Psychology offers undergraduate and postgraduate courses accredited by the Australian Psychology Accreditation Council (APAC).

The school promotes psychology in general through the professional, educational and research activities of its staff and students, but has a particular commitment to rural and regional communities, as well as to promoting access to psychology education for First Nations Australians. Professional and Academic staff located on three campuses at Charles Sturt University, including Bathurst, Port Macquarie and Wagga Wagga.

The school's academic staff are active in several research areas, including clinical psychology, forensic psychology, developmental psychology, ageing, cognition, social psychology, personality and individual differences, health psychology, psychophysiology, and rehabilitation. The school is equipped with research infrastructure, a virtual reality (VR)/artificial intelligence (AI) with Unreal Engine and peripherals including VR headsets, cameras, and motion capture hardware to aid in advancing research, and the learning and teaching experiences of our students.



Organisational chart



Reporting relationship

This position reports to: Head, School of Psychology

This position supervises: Nil

Key working relationships

- Associate Heads of School
- School Academic and Professional Team
- Faculty Functional Administrative Teams
- Course Director/s
- Students



- University Divisions and Offices
- University, industry stakeholders and professional bodies

Position overview

The role of Lecturer in Clinical Psychology will actively engage in teaching, and curriculum development within the School of Psychology. The position requires extensive knowledge and experience within a relevant discipline area aligned to psychology and be required to teach subjects in a range of modes including face-to-face, online, and blended environments at both the undergraduate and postgraduate levels. The role requires ambition and drive to be part of a vibrant teaching, professional and research active team with opportunities to excel. The successful applicant should have the capacity to attract external funding for research projects and/or develop links with relevant industry partners.

Charles Sturt University provides clinical training at master's Level, with a specific aim of contributing to the training of Psychologists for regional, rural, and remote areas of Australia. Our courses are innovative, evidence-based, and accredited by the Australian Psychology Accreditation Council (APAC).

This role will be based on the Bathurst, Port Macquarie or Wagga Wagga campus, and will also support the School's activities to engage with local stakeholders and communities.

Principal responsibilities

Teaching

- Apply Charles Sturt University learning and teaching methodologies, processes, technologies and tools to deliver high quality student-centred learning opportunities in the relevant discipline and as required to meet the teaching needs of the University. Achieve excellence in teaching in a range of delivery modes, which may include face to face and online teaching and assessment.
- Build professional relationships with students and provide timely and appropriate consultation and feedback.
- Actively contribute to collaborative processes to design, deliver and continually improve high quality courses and learning experiences for students including the giving and receiving of constructive feedback.
- Actively contribute to high performing multi-disciplinary teams with an outcome-oriented focus and the development of a respectful, inclusive, trusting and collaborative working environment.
- Provide leadership and management, as appropriate, in the convening, coordination and delivery of subjects and/or courses.
- Maintain a sound and current knowledge and understanding of discipline area through industry engagement and/or scholarly activities or similar.
- Contribute to the School's teaching using evidence-based approaches, consistent with the scientist-practitioner model, and adherence to the APAC accreditation standards for preprofessional and professional competencies.
- Use effective teaching methods and undertake continuing professional development as a teacher.
- Provide direct clinical training in, and evaluate student competencies for, evidence-based assessment and interventions, including cognitive-behavioural therapies.
- Supervise students undertaking individual research projects (Postgraduate Diploma, Honours,



and Masters).

- Undertake Placement Coordinator duties within the postgraduate programs as required.
- Liaise with external agencies to assist the school to develop partnerships with Government and non-Government providers of psychological services.

Research

- Maintain a research active profile by conducting, ethical, high-quality research and contribute to knowledge through scholarship, publication and presentation.
- Develop and execute a research plan that aligns with Charles Sturt University's Research Strategy and objectives including contributing to application for funding to support research outcomes.
- Build networks and form relationships with internal and external researchers and stakeholders, as appropriate.
- Continue to build a record of research/creative work which contributes to the development of the discipline whilst maintaining up-to-date research records within Charles Sturt University's research database.

Administration

- Undertake larger projects that enhance curricula and that are of particular benefit to the school or discipline, or projects that investigate practice and university teaching/curricula.
- Actively contribute to governance, marketing and promotion, and administrative activities to facilitate the work of the Faculty/School.
- **Values:** Consistently embody the University's values in behaviour and decision-making, while encouraging inclusivity and collaboration to foster a safe and respectful work environment.
- Other duties appropriate to the classification as required.



Required capabilities

This section comprises capabilities from the Charles Sturt [Capability Framework](#). Read the Framework for more detail regarding these capabilities.

Capability	Capability Definition	Level of influence
Innovates		
Acts Strategically	Analyses opportunities to determine effective solutions and solve problems in order to achieve short and long-term objectives.	Influence self
Connects		
Builds Relationships	Implements interdisciplinary collaboration, adopts diversity and inclusion principles, and facilitates relationship building to work effectively with others.	Influence self
Achieves		
Plans and Prioritises	Effectively plans and aligns priorities with strategy. Effectively allocates and utilises resources to achieve goals.	Influence self

This section comprises of Enabler and Manages Effectively capabilities from the Charles Sturt [Capability Framework](#).

Capability	Capability description	Level of influence
Enablers		
Manages Projects Effectively	Applies effective planning and coordinates effort using project management practices to deliver specific project objectives.	Influence self

Physical capabilities

The incumbent may be required to perform the following.

- Work in other environments beyond your base campus, such as other campuses.
- On occasion drive a vehicle distances up to 500km per day within the terms of the university's Driver Safety Guidelines



Selection criteria

Applicants are expected to address the selection criteria when applying for this position.

Essential

- A. A doctoral qualification appropriate to Clinical Psychology or equivalent accreditation and standing.
- B. Full registration as a Psychologist with the Psychology Board of Australia, approved by the Psychological Board of Australia as a supervisor and endorsement as a Clinical Psychologist.
- C. A record of clinical practice in evidence-based interventions (such as CBT, DBT, ACT, etc), preferably with a range of clinical populations and presenting problems.
- D. A record of research/creative works or professional activity relevant to the discipline, which demonstrate a capacity to make an autonomous contribution.
- E. Experience in at least one of (a) teaching clinical psychology, and/or (b) providing clinical supervision, and undertaking the assessment of clinical competencies of provisionally registered psychologists, as required by the Psychology Board of Australia.